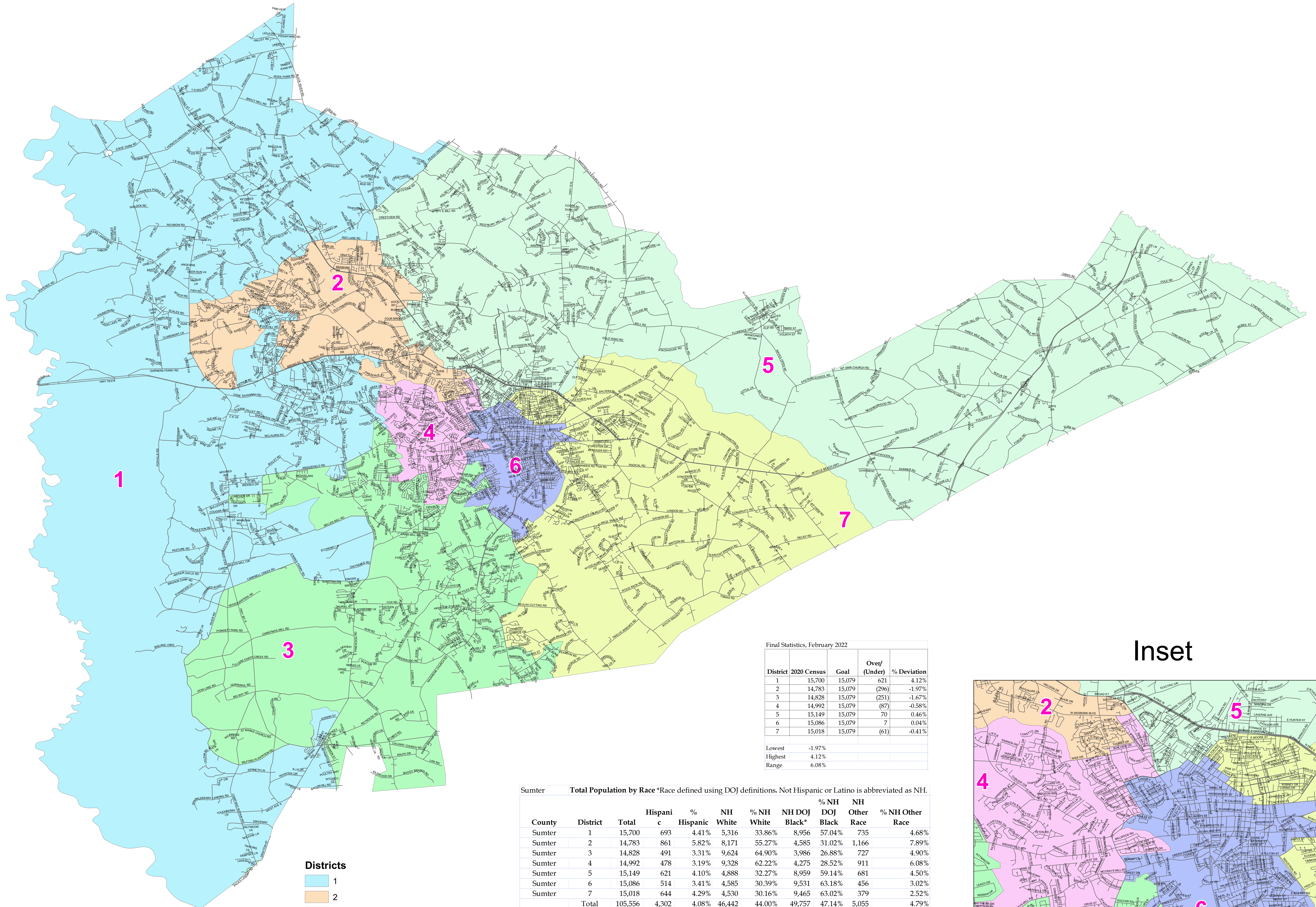


Sumter County 2020 Redistricting Final Map Ordinance No. 22-971



Final Statistics, February 2022

District	2020 Census	Goal	Over/Under	% Deviation
1	15,700	15,079	621	4.12%
2	14,783	15,079	(296)	-1.97%
3	14,828	15,079	(251)	-1.67%
4	14,992	15,079	(87)	-0.58%
5	15,149	15,079	70	0.46%
6	15,086	15,079	7	0.04%
7	15,018	15,079	(61)	-0.41%
Lowest				-1.97%
Highest				4.12%
Range				6.08%

Sumter Total Population by Race *Race defined using DOJ definitions. Not Hispanic or Latino is abbreviated as NH.

County	District	Total	Hispanic	% Hispanic	NH White	% NH White	NH Black*	% NH Black DOJ	NH Other	% NH Other
Sumter	1	15,700	693	4.41%	5,316	33.86%	8,956	57.04%	735	4.68%
Sumter	2	14,783	861	5.82%	8,171	55.27%	4,585	31.02%	1,166	7.89%
Sumter	3	14,828	491	3.31%	9,624	64.90%	3,986	26.88%	727	4.90%
Sumter	4	14,992	478	3.19%	9,328	62.22%	4,275	28.52%	911	6.08%
Sumter	5	15,149	621	4.10%	4,888	32.27%	8,959	59.14%	681	4.50%
Sumter	6	15,086	514	3.41%	4,585	30.39%	9,531	63.18%	456	3.02%
Sumter	7	15,018	644	4.29%	4,530	30.16%	9,465	63.02%	379	2.52%
	Total	105,556	4,302	4.08%	46,442	44.00%	49,757	47.14%	5,055	4.79%

Districts

- 1
- 2
- 3
- 4
- 5
- 6
- 7

— Roads

Inset

