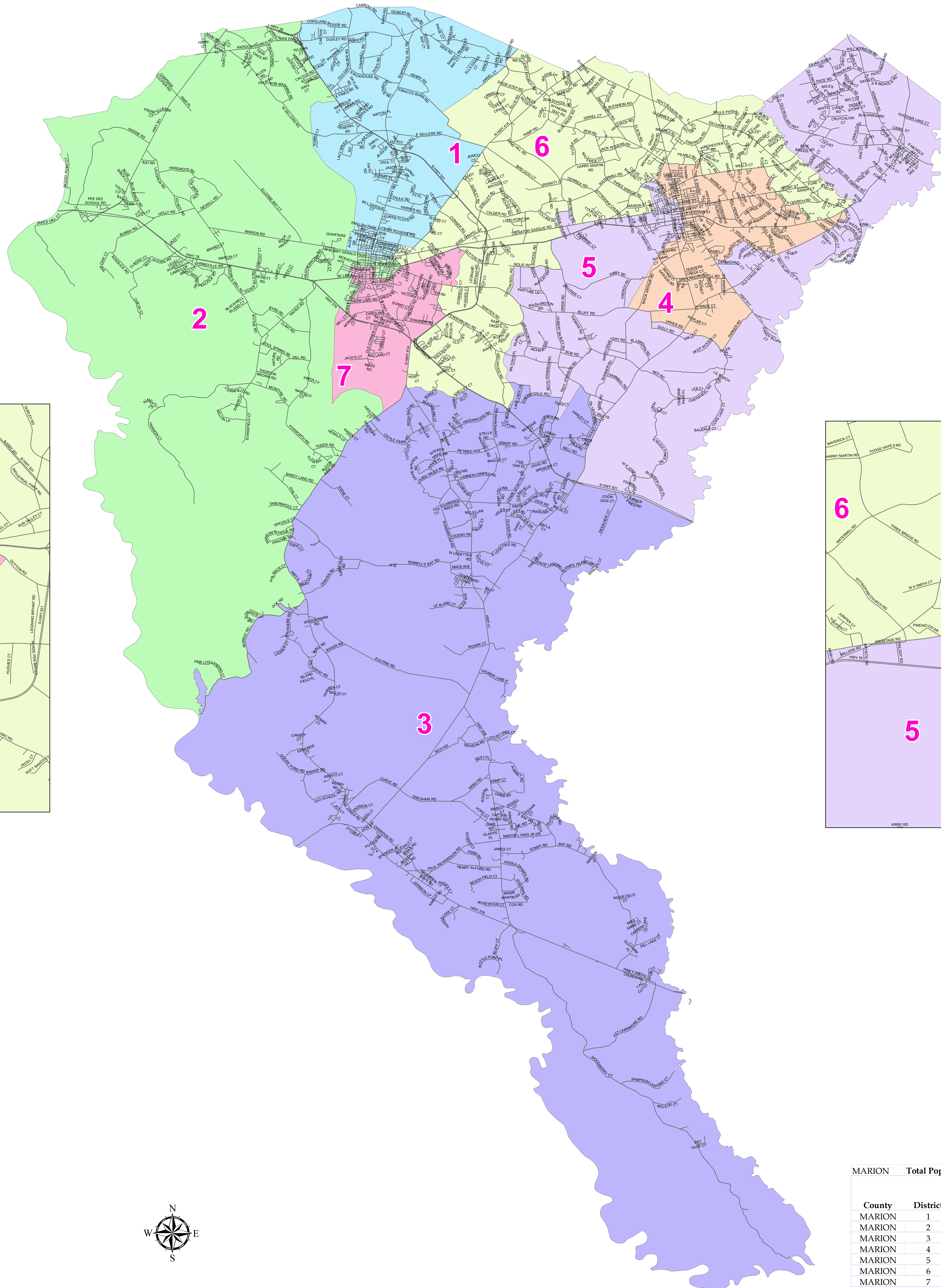
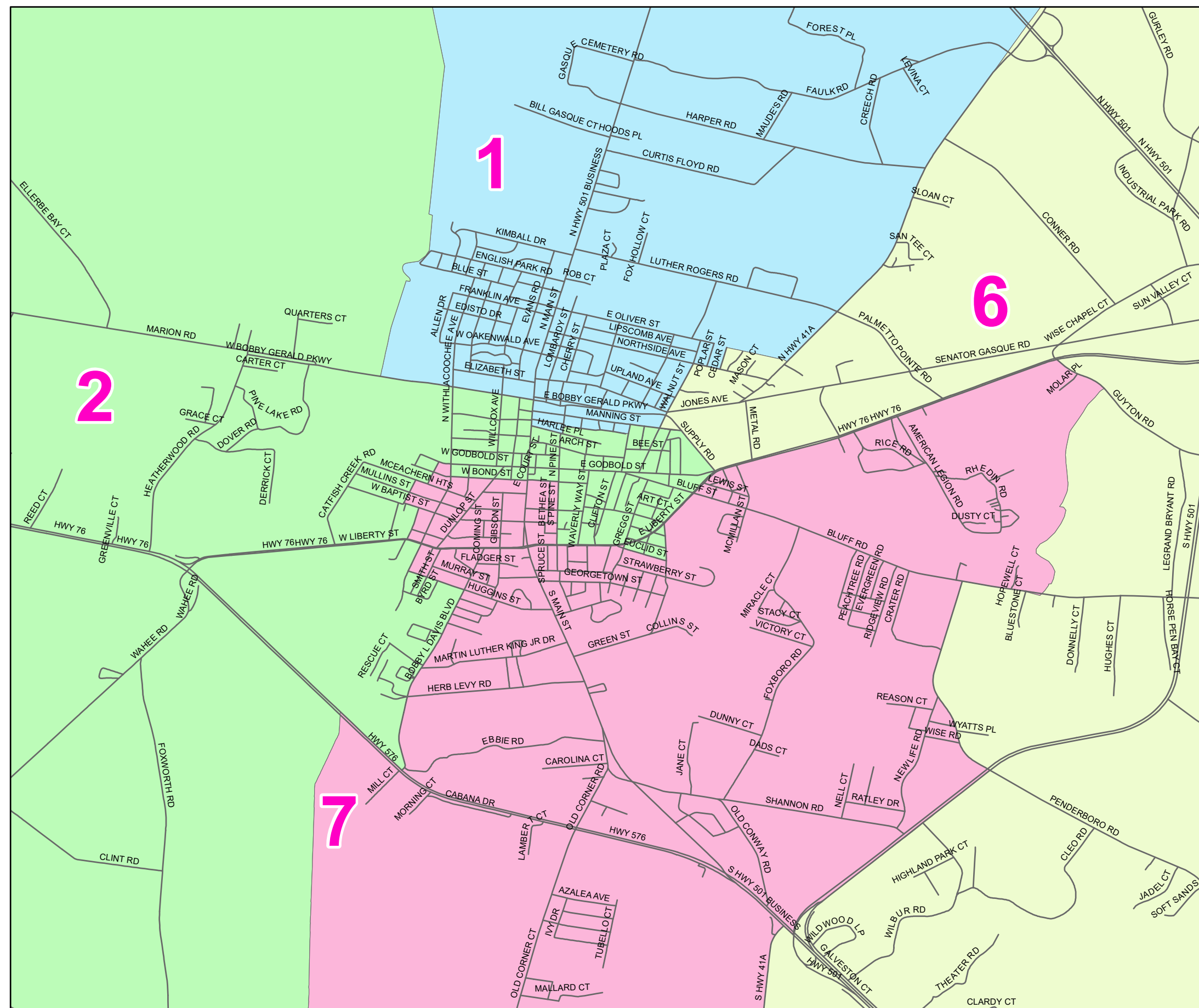


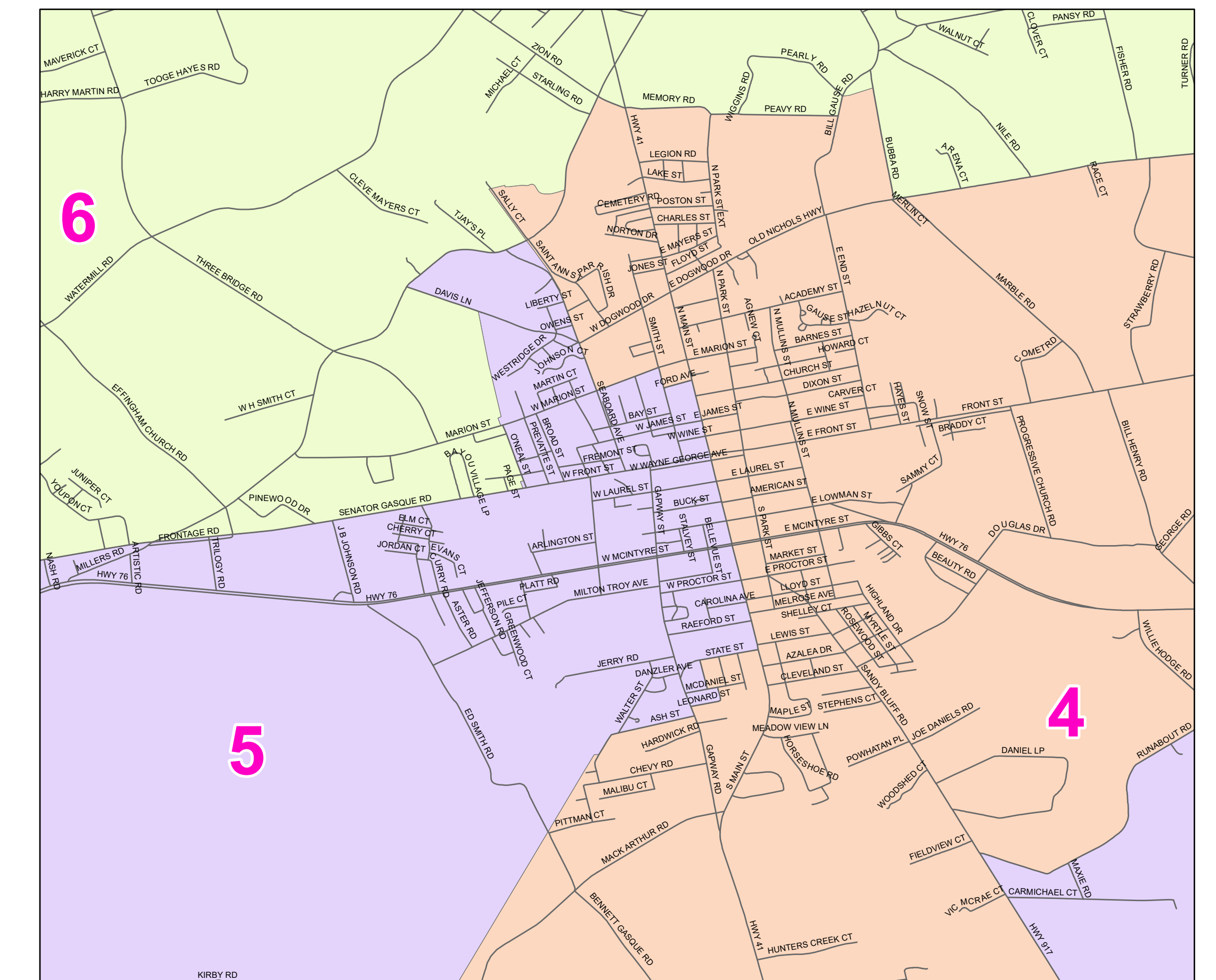
# Marion County 2020 Redistricting Final Map Ordinance No. 2021-20



Inset

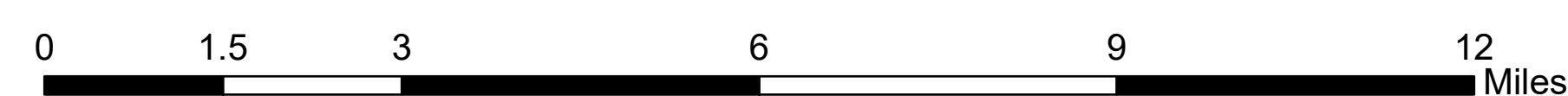
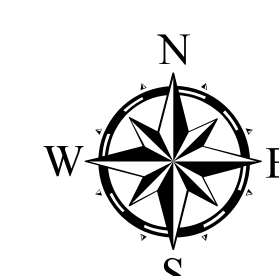


Inset



**Districts**

- 1
- 2
- 3
- 4
- 5
- 6
- 7
- Roads



Final Statistics, February 2022

District	2020 Census	Goal	Over/Under	% Deviation
1	4,220	4,169	51	1.22%
2	4,177	4,169	8	0.19%
3	4,214	4,169	45	1.08%
4	4,172	4,169	3	0.07%
5	4,102	4,169	(67)	-1.61%
6	4,195	4,169	26	0.62%
7	4,103	4,169	(66)	-1.58%
Lowest				-1.61%
Highest				1.22%
Range				2.83%

MARION Total Population by Race \*Race defined using DOJ definitions. Not Hispanic or Latino is abbreviated as NH.

County	District	Total	Hispanic	% Hispanic	NH White	% NH White	NH DOJ Black*	% NH DOJ Black	NH DOJ Other	% NH DOJ Other	NH Other	% NH Other
MARION	1	4,220	88	2.09%	1,944	46.07%	2,058	48.77%	130	3.08%		
MARION	2	4,177	46	1.10%	1,391	33.30%	2,588	61.96%	152	3.64%		
MARION	3	4,214	200	4.75%	1,482	35.17%	2,430	57.66%	102	2.42%		
MARION	4	4,172	84	2.01%	1,723	41.30%	2,251	53.95%	114	2.73%		
MARION	5	4,102	115	2.80%	1,578	38.47%	2,284	55.68%	125	3.05%		
MARION	6	4,195	92	2.19%	2,055	48.99%	1,966	46.87%	82	1.95%		
MARION	7	4,103	85	2.07%	907	22.11%	3,048	74.29%	63	1.54%		
	Total	29,183	710	2.43%	11,080	37.97%	16,625	56.97%	768	2.63%		