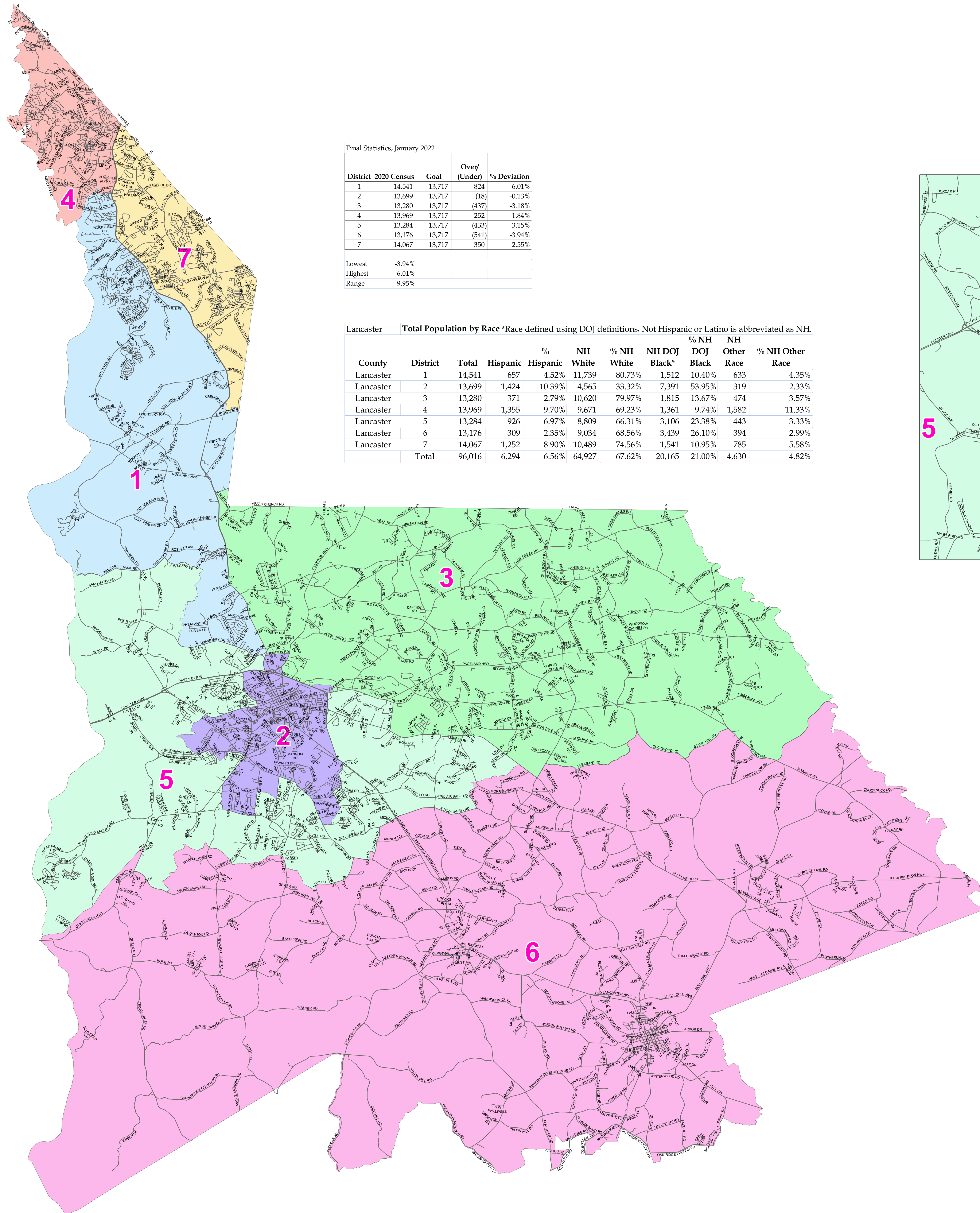


# Lancaster County 2020 Redistricting Final Map Ordinance No. 2021-1784



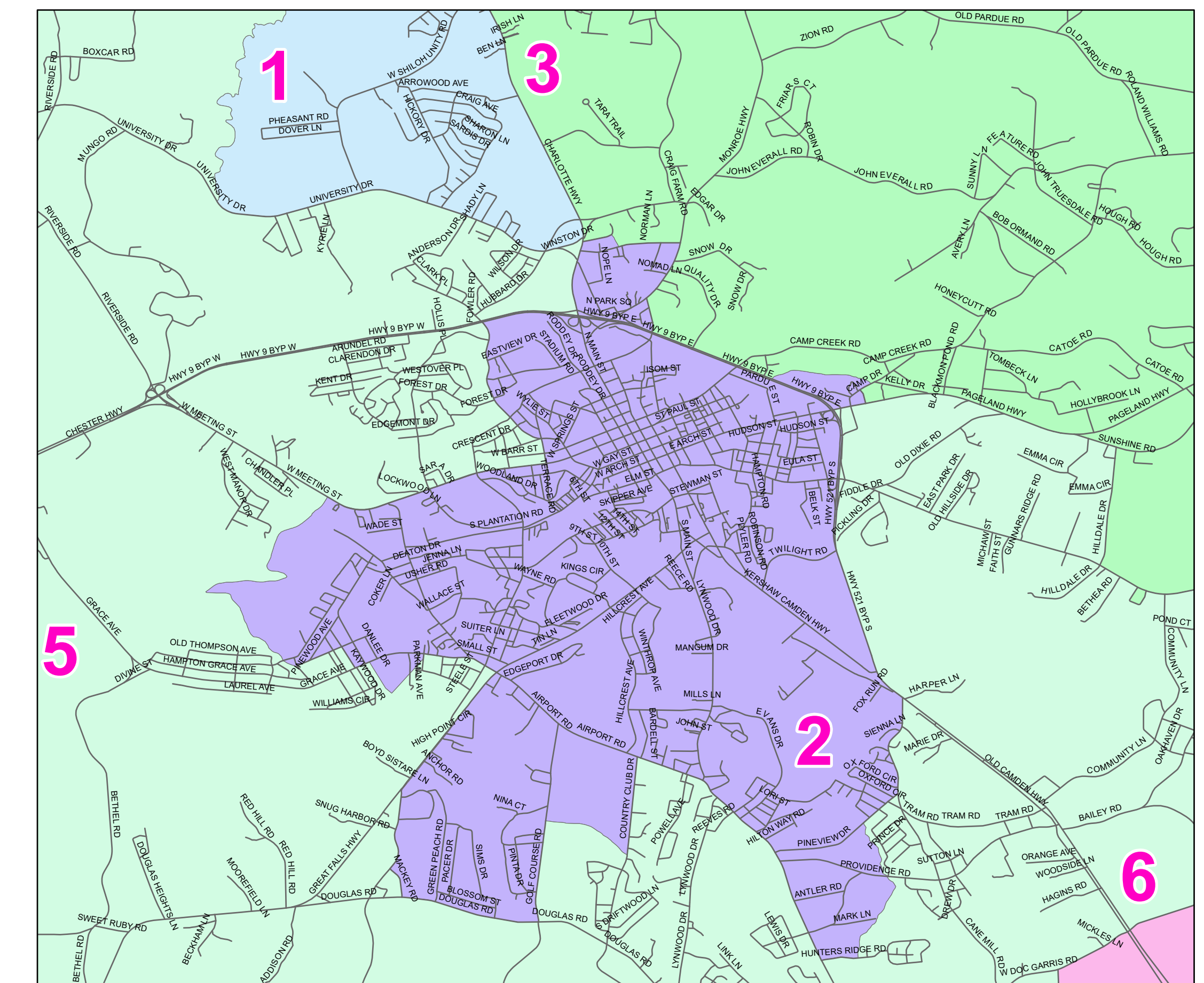
Final Statistics, January 2022

District	2020 Census	Goal	Over/ (Under)	% Deviation
1	14,541	13,717	824	6.01%
2	13,699	13,717	(18)	-0.13%
3	13,280	13,717	(437)	-3.18%
4	13,969	13,717	252	1.84%
5	13,284	13,717	(433)	-3.15%
6	13,176	13,717	(541)	-3.94%
7	14,067	13,717	350	2.55%
Lowest				-3.94%
Highest				6.01%
Range				9.95%

Lancaster Total Population by Race \*Race defined using DOJ definitions. Not Hispanic or Latino is abbreviated as NH.

County	District	Total	Hispanic	% Hispanic	NH White	% NH White	NH DOJ Black*	% NH DOJ Black	NH Other	% NH Other
Lancaster	1	14,541	657	4.52%	11,739	80.73%	1,512	10.40%	633	4.35%
Lancaster	2	13,699	1,424	10.39%	4,565	33.32%	7,391	53.95%	319	2.33%
Lancaster	3	13,280	371	2.79%	10,620	79.97%	1,815	13.67%	474	3.57%
Lancaster	4	13,969	1,355	9.70%	9,671	69.23%	1,361	9.74%	1,582	11.33%
Lancaster	5	13,284	926	6.97%	8,809	66.31%	3,106	23.38%	443	3.33%
Lancaster	6	13,176	309	2.35%	9,034	68.56%	3,439	26.10%	394	2.99%
Lancaster	7	14,067	1,252	8.90%	10,489	74.56%	1,541	10.95%	785	5.58%
	Total	96,016	6,294	6.56%	64,927	67.62%	20,165	21.00%	4,630	4.82%

Inset



**Districts**

- 1
- 2
- 3
- 4
- 5
- 6
- 7

— Roads

