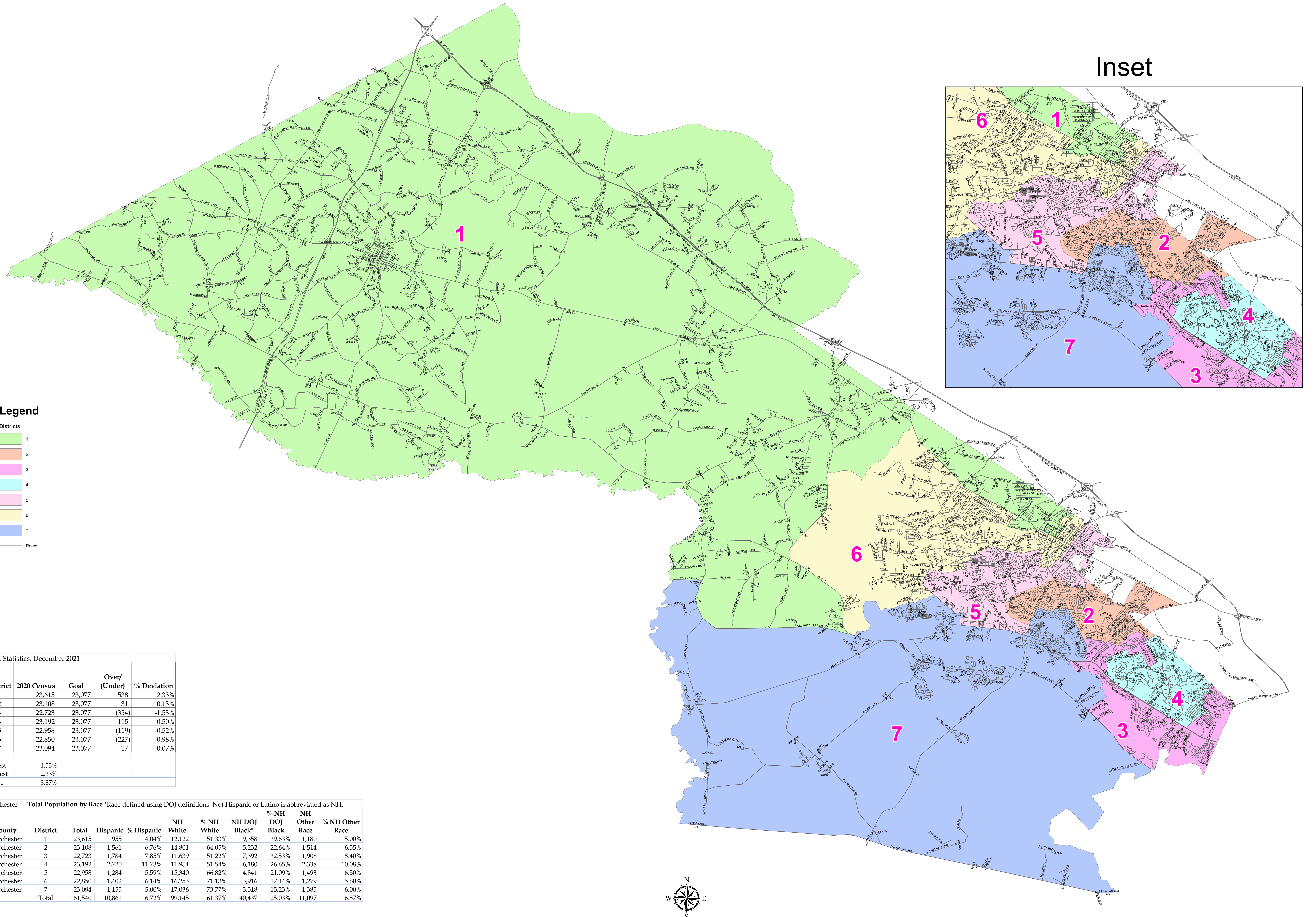


Dorchester County 2020 Redistricting Final Map Ordinance No. 21-30



Legend

- Districts
- 1
 - 2
 - 3
 - 4
 - 5
 - 6
 - 7
- Roads

Final Statistics, December 2021

District	2020 Census	Goal	Over/ (Under)	% Deviation
1	23,615	23,077	538	2.33%
2	23,108	23,077	31	0.13%
3	22,723	23,077	(354)	-1.53%
4	23,192	23,077	115	0.50%
5	22,958	23,077	(119)	-0.52%
6	22,850	23,077	(227)	-0.98%
7	23,094	23,077	17	0.07%
Lowest	-1.53%			
Highest	2.33%			
Range	3.87%			

Dorchester Total Population by Race *Race defined using DOJ definitions. Not Hispanic or Latino is abbreviated as NH.

County	District	Total	Hispanic	% Hispanic	NH White	% NH White	NH DOJ Black*	% NH DOJ Black	NH Other Race	% NH Other Race
Dorchester	1	23,615	955	4.04%	12,122	51.33%	9,358	39.63%	1,180	5.00%
Dorchester	2	23,108	1,561	6.76%	14,801	64.05%	5,232	22.64%	1,514	6.55%
Dorchester	3	22,723	1,784	7.85%	11,639	51.22%	7,392	32.53%	1,908	8.40%
Dorchester	4	23,192	2,720	11.73%	11,954	51.54%	6,180	26.65%	2,338	10.08%
Dorchester	5	22,958	1,284	5.59%	15,340	66.82%	4,841	21.09%	1,493	6.50%
Dorchester	6	22,850	1,402	6.14%	16,253	71.13%	3,916	17.14%	1,279	5.60%
Dorchester	7	23,094	1,155	5.00%	17,036	73.77%	3,518	15.23%	1,385	6.00%
	Total	161,540	10,861	6.72%	99,145	61.37%	40,437	25.03%	11,097	6.87%