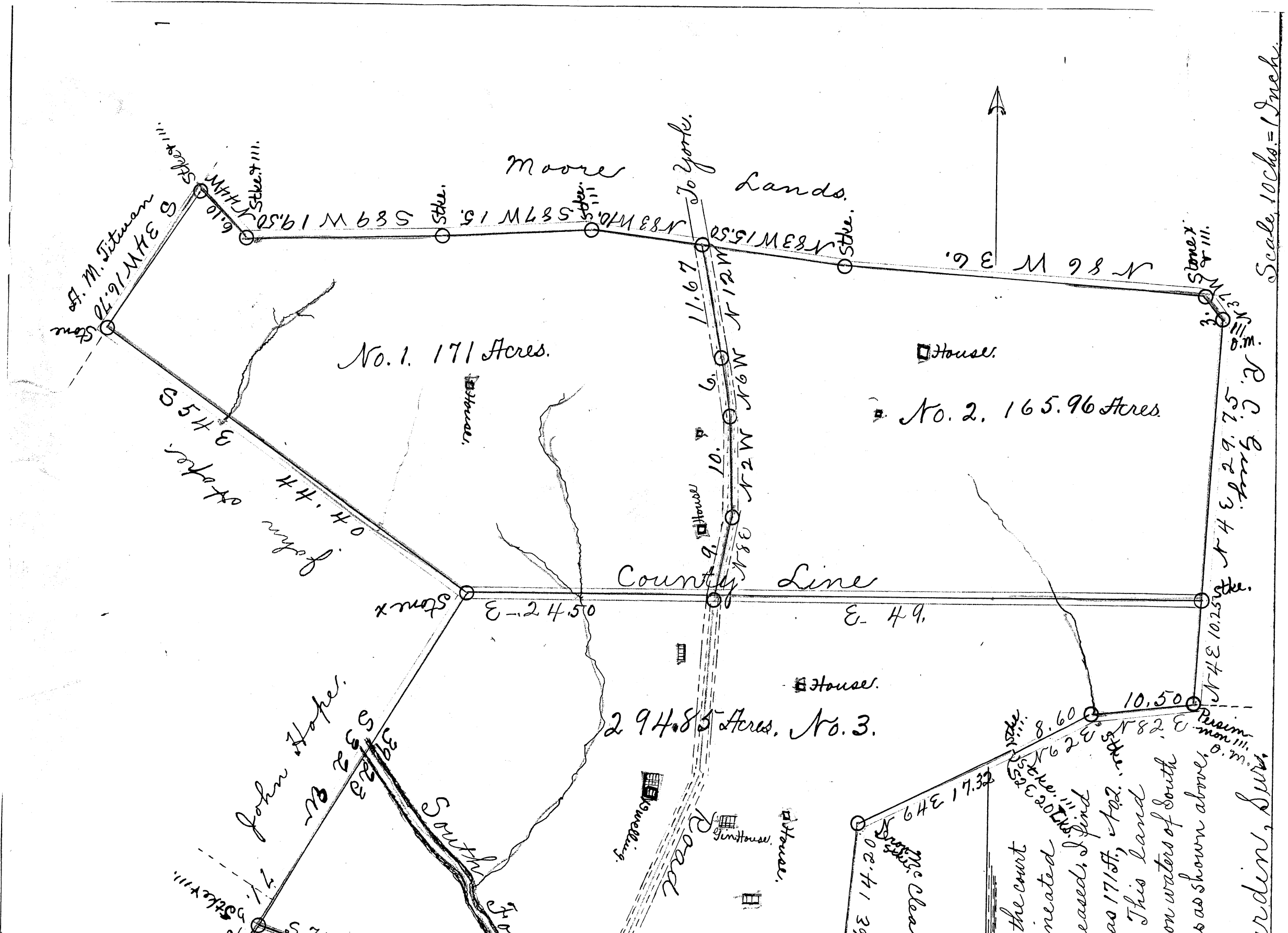
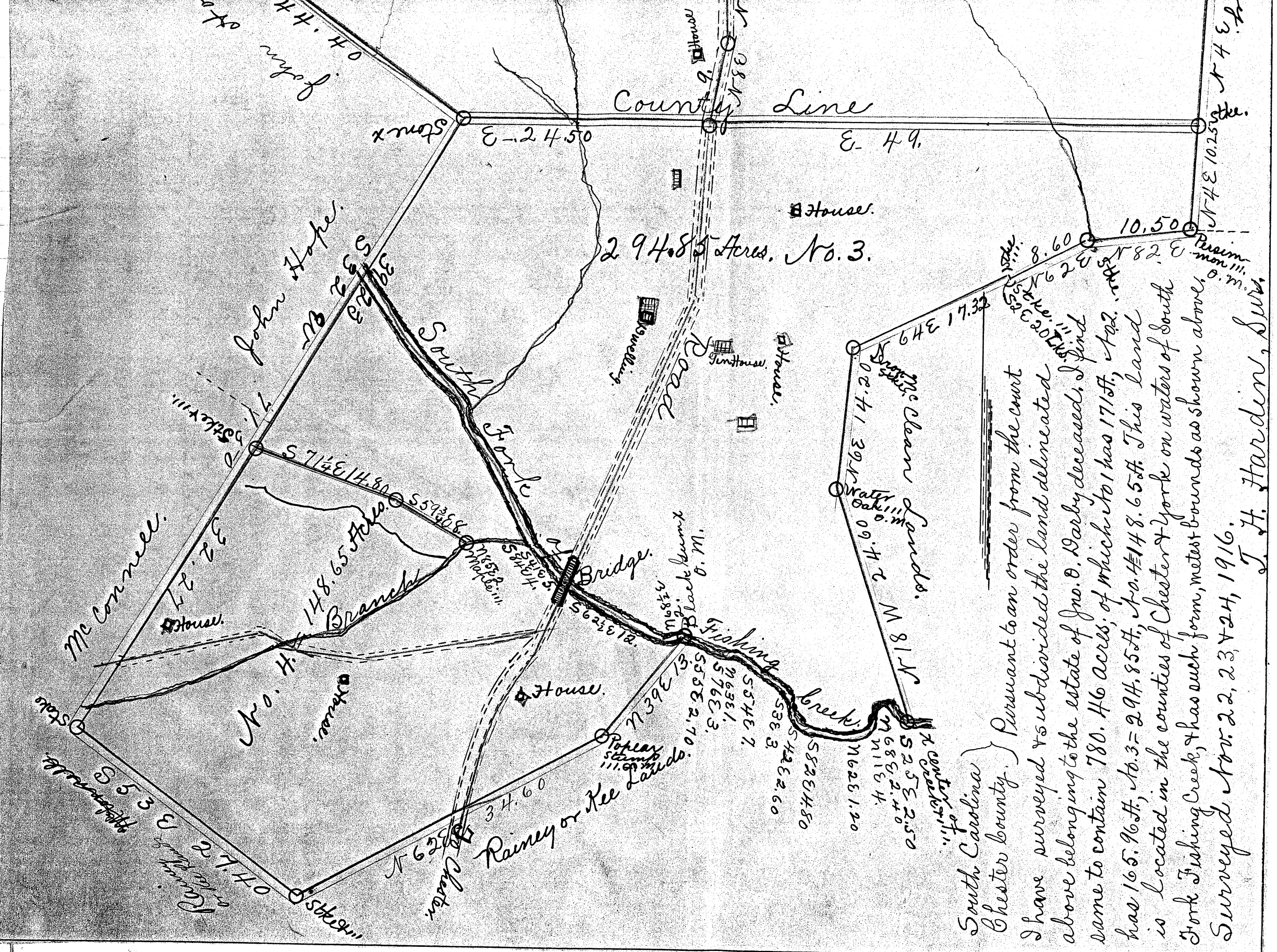


Plat of Estate lands of Jno. C. Darby, deceased, purchased by J.M. and J.H. Darby at Clerk's Sale, Dec. 4, 1916. See Judgment Roll No. 3151



the court created eased, I find as 171ft, Ad. This land on waters of South as shown above. rden, Sur.



Chester
DB. 149
PG. 793

South Carolina }
Chester County. } Pursuant to an order from the court
I have surveyed & subdivided the land delineated
above belonging to the estate of Jno. B. Barby deceased. I find
same to contain 780.46 Acres, of which No. 1 has 171.57, No. 2
has 165.96, No. 3 = 294.85, No. 4 = 148.65. This land
is located in the counties of Chester & York on waters of South
Fork Fishing Creek, & has such form, metes & bounds as shown above.
Surveyed Nov. 22, 23, & 24, 1916.
J. H. Hardin, Surv.

Recorded Dec. 5, 1916.