

RFA BOARD MEETING

February 12, 2021



SOUTH CAROLINA REVENUE AND FISCAL AFFAIRS OFFICE
Transforming data into solutions for South Carolina

Adoption of Meeting Minutes



Employee Recognition



Retirement

Karen Rhinehart, Mapping and Operations



Project Highlights

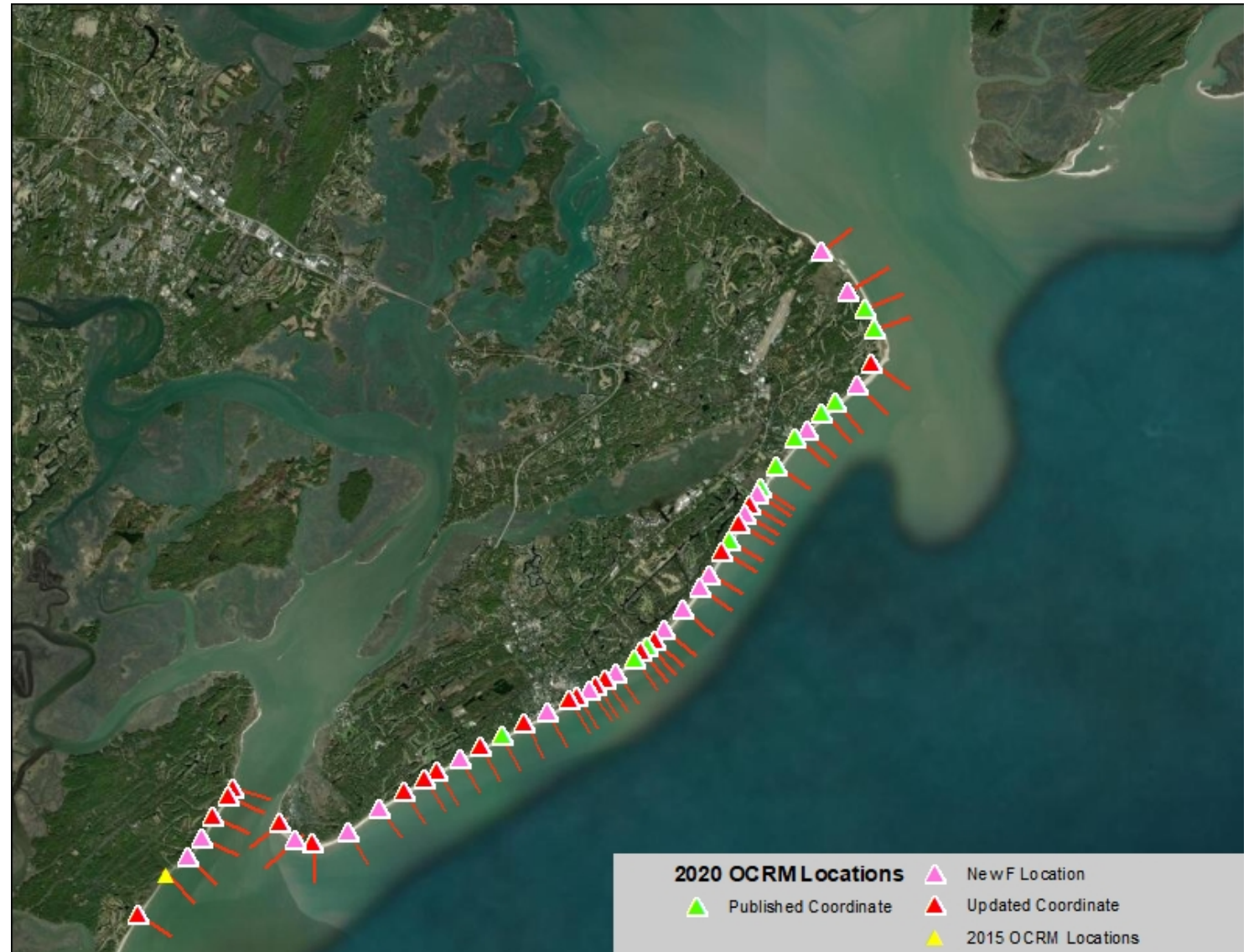


Beach Erosion Research and Monitoring (BERM) Project

Despite initial travel restrictions with the pandemic, the Geodetic Survey was able to complete year 2 of the 5-year project within schedule (Hilton Head, Daufuskie, and Fripp islands)

BERM Project – Daufuskie and Hilton Head

- Hilton Head represented the most time intensive portion in year 2 of the project with 45 total survey monuments confirmed, updated, or relocated
- Daufuskie Island provided its own unique challenge for the crew as it is only accessible by boat or ferry

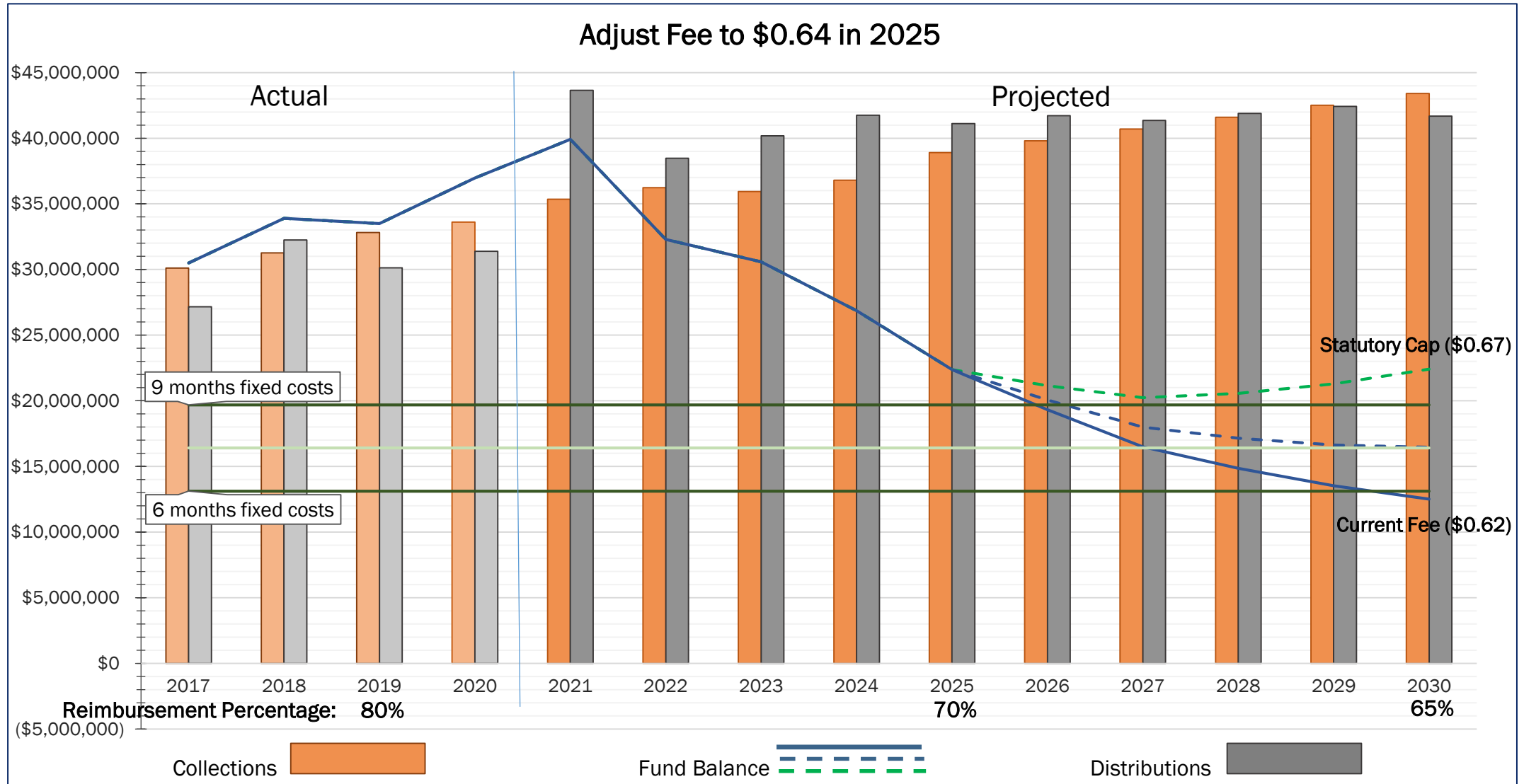


BERM Project – Daufuskie Island

- This section of the coastline on Daufuskie Island has eroded at a rate of 7 feet per year since 2015, hindering the relocation process of some monuments



SC Wireless 9-1-1 Program – Fiscal Model



Other Items

- County Boundary Program
 - Conducted our first virtual public meeting on 12/3/20 – Berkeley/Charleston (Deytens Shipyard) boundary; will certify by the end of this month if no appeals are filed
 - Second virtual public meeting scheduled for 3/11/21 – Colleton/Charleston (near Edisto Island) boundary
 - Field work at or near completion on seven other county line segments
- Compensation Strategy
 - Research conducted on salaries in the public and private sectors for comparison
 - Discussions held to discuss analysis and next steps

Redistricting

- Received requests for services from:

- (4) Municipalities

- Simpsonville
 - Greenville
 - Lancaster
 - Fountain Inn

- (3) Counties

- Edgefield
 - Florence
 - Williamsburg

- Received request for consultation only from one municipality (Rock Hill)
- U.S. Census Bureau has determined the data needed for state and local redistricting will not be released before July 31, 2021 (data needed for apportionment should still be available by April 30th)

Potential Issues

- Our vendor for business intelligence software, Panorama, is moving its operations to Israel
 - Procurement issues may impede continued product licensing
 - Investigating possible resolution as well as alternate solutions
- One-fourth (26%) of the performance measures in our Accountability Report are dependent upon results from customer satisfaction surveys

Other Business



Happy Valentine's Day!

THANKS
FOR PUTTING YOUR ❤️ INTO YOUR WORK!