

Charlotte, South Carolina  
Office of Register Mesne Conveyance  
Plat recorded this 19th day of August, 2005, at  
2:46 o'clock in Plat Book E.L. Page 158, and tracing cloth  
copy filed in File 8 Drawer --- Folder 13, Drawing No. 43.  
Original plat (a White Print) delivered to Chas. County Planning Bd.  
APPROVED PLAT  
07013 AVE 19 2005  
DATE

Register Mesne Conveyance  
Chris Jones

**LEGEND:**  
I.O. IRON PIN OLD  
I.N. IRON PIN NEW (5/8 REBAR)  
△ CALCULATED POINT

**NOTES:**  
1.) ANYTHING SHOWN OUTSIDE THE DEFINED BOUNDARY OF THIS PLAT IS FOR DESCRIPTIVE PURPOSES ONLY.  
2.) AREA DETERMINED BY COORDINATE METHOD.  
3.) THE BEARINGS SHOWN HEREON ARE MAGNETIC AND AS SUCH ARE SUBJECT TO LOCAL ATTRACTION.  
4.) THE PRESENCE OR ABSENCE OF U.S. ARMY CORP OF ENGINEERS JURISDICTIONAL WETLANDS IS UNDETERMINED AS OF THE DATE OF THIS SURVEY.  
5.) THIS PLAT REPRESENTS A SURVEY BASED ON THE LISTED REFERENCES ONLY, AND IS NOT THE RESULT OF A TITLE SEARCH.  
6.) DECLARATION IS MADE TO THOSE PERSONS FOR WHICH THIS PLAT IS PREPARED IT IS THE DRAWING PLAT IS A SUBSEQUENT OWNERS THIS DRAWING PLAT IS AN INSTRUMENT OF SERVICE AND IS THE SOLE PROPERTY OF GEORGE A.Z. JOHNSON, JR., INC. IT SHALL NOT BE REPRODUCED OR USED IN ANY WAY, WHATSOEVER, WITHOUT THE WRITTEN PERMISSION OF F. STEVEN JOHNSON, PLS, SC REG No. 10038.  
7.) USE OF UNSEALED COPIES OF THIS DOCUMENT IN ANY COURT, FINANCIAL OR LAND TRANSACTION OR FILING WITH ANY PUBLIC AGENCY OR OFFICE IS UNAUTHORIZED USE AND IS A VIOLATION OF FEDERAL COPYRIGHT LAWS.  
8.) "SURVEY INSPECTIONS" OR "UPDATES" OF THIS MAP ARE PROHIBITED.  
9.) THESE CERTIFICATIONS ARE NOT TRANSFERABLE TO ADDITIONAL INSTITUTIONS OR SUBSEQUENT OWNERS.

**REFERENCES:**  
1.) T.M.S. 023-00-00-141  
2.) PLAT BY ROBERT L. FRANK, PLS DATED JANUARY 25, 1998 PLAT BOOK CL PAGE 78 RMC CHARLESTON COUNTY  
3.) PLAT BY ROBERT L. FRANK, PLS DATED DECEMBER 16, 1998 PLANNING BOARD No. 17757-F RMC CHARLESTON COUNTY  
4.) PLAT BY DAVID SPELL, PLS DATED FEBRUARY 28, 1995 PLAT BOOK EA, PAGE 668 PLANNING BOARD No. 16669 RMC CHARLESTON COUNTY

**APPROVED PLAT**  
07013 AVE 19 2005  
DATE

Register Mesne Conveyance  
Chris Jones

Charlotte, South Carolina  
Office of Register Mesne Conveyance  
Plat recorded this 19th day of August, 2005, at  
2:46 o'clock in Plat Book E.L. Page 158, and tracing cloth  
copy filed in File 8 Drawer --- Folder 13, Drawing No. 43.  
Original plat (a White Print) delivered to Chas. County Planning Bd.

APPROVED PLAT  
07013 AVE 19 2005  
DATE

Register Mesne Conveyance  
Chris Jones

Charlotte, South Carolina  
Office of Register Mesne Conveyance  
Plat recorded this 19th day of August, 2005, at  
2:46 o'clock in Plat Book E.L. Page 158, and tracing cloth  
copy filed in File 8 Drawer --- Folder 13, Drawing No. 43.  
Original plat (a White Print) delivered to Chas. County Planning Bd.

APPROVED PLAT  
07013 AVE 19 2005  
DATE

Register Mesne Conveyance  
Chris Jones

Charlotte, South Carolina  
Office of Register Mesne Conveyance  
Plat recorded this 19th day of August, 2005, at  
2:46 o'clock in Plat Book E.L. Page 158, and tracing cloth  
copy filed in File 8 Drawer --- Folder 13, Drawing No. 43.  
Original plat (a White Print) delivered to Chas. County Planning Bd.

APPROVED PLAT  
07013 AVE 19 2005  
DATE

Register Mesne Conveyance  
Chris Jones

Charlotte, South Carolina  
Office of Register Mesne Conveyance  
Plat recorded this 19th day of August, 2005, at  
2:46 o'clock in Plat Book E.L. Page 158, and tracing cloth  
copy filed in File 8 Drawer --- Folder 13, Drawing No. 43.  
Original plat (a White Print) delivered to Chas. County Planning Bd.

APPROVED PLAT  
07013 AVE 19 2005  
DATE

Register Mesne Conveyance  
Chris Jones

Charlotte, South Carolina  
Office of Register Mesne Conveyance  
Plat recorded this 19th day of August, 2005, at  
2:46 o'clock in Plat Book E.L. Page 158, and tracing cloth  
copy filed in File 8 Drawer --- Folder 13, Drawing No. 43.  
Original plat (a White Print) delivered to Chas. County Planning Bd.

APPROVED PLAT  
07013 AVE 19 2005  
DATE

Register Mesne Conveyance  
Chris Jones

Charlotte, South Carolina  
Office of Register Mesne Conveyance  
Plat recorded this 19th day of August, 2005, at  
2:46 o'clock in Plat Book E.L. Page 158, and tracing cloth  
copy filed in File 8 Drawer --- Folder 13, Drawing No. 43.  
Original plat (a White Print) delivered to Chas. County Planning Bd.

APPROVED PLAT  
07013 AVE 19 2005  
DATE

Register Mesne Conveyance  
Chris Jones

Charlotte, South Carolina  
Office of Register Mesne Conveyance  
Plat recorded this 19th day of August, 2005, at  
2:46 o'clock in Plat Book E.L. Page 158, and tracing cloth  
copy filed in File 8 Drawer --- Folder 13, Drawing No. 43.  
Original plat (a White Print) delivered to Chas. County Planning Bd.

APPROVED PLAT  
07013 AVE 19 2005  
DATE

Register Mesne Conveyance  
Chris Jones

Charlotte, South Carolina  
Office of Register Mesne Conveyance  
Plat recorded this 19th day of August, 2005, at  
2:46 o'clock in Plat Book E.L. Page 158, and tracing cloth  
copy filed in File 8 Drawer --- Folder 13, Drawing No. 43.  
Original plat (a White Print) delivered to Chas. County Planning Bd.

APPROVED PLAT  
07013 AVE 19 2005  
DATE

Register Mesne Conveyance  
Chris Jones

Charlotte, South Carolina  
Office of Register Mesne Conveyance  
Plat recorded this 19th day of August, 2005, at  
2:46 o'clock in Plat Book E.L. Page 158, and tracing cloth  
copy filed in File 8 Drawer --- Folder 13, Drawing No. 43.  
Original plat (a White Print) delivered to Chas. County Planning Bd.

APPROVED PLAT  
07013 AVE 19 2005  
DATE

Register Mesne Conveyance  
Chris Jones

Charlotte, South Carolina  
Office of Register Mesne Conveyance  
Plat recorded this 19th day of August, 2005, at  
2:46 o'clock in Plat Book E.L. Page 158, and tracing cloth  
copy filed in File 8 Drawer --- Folder 13, Drawing No. 43.  
Original plat (a White Print) delivered to Chas. County Planning Bd.

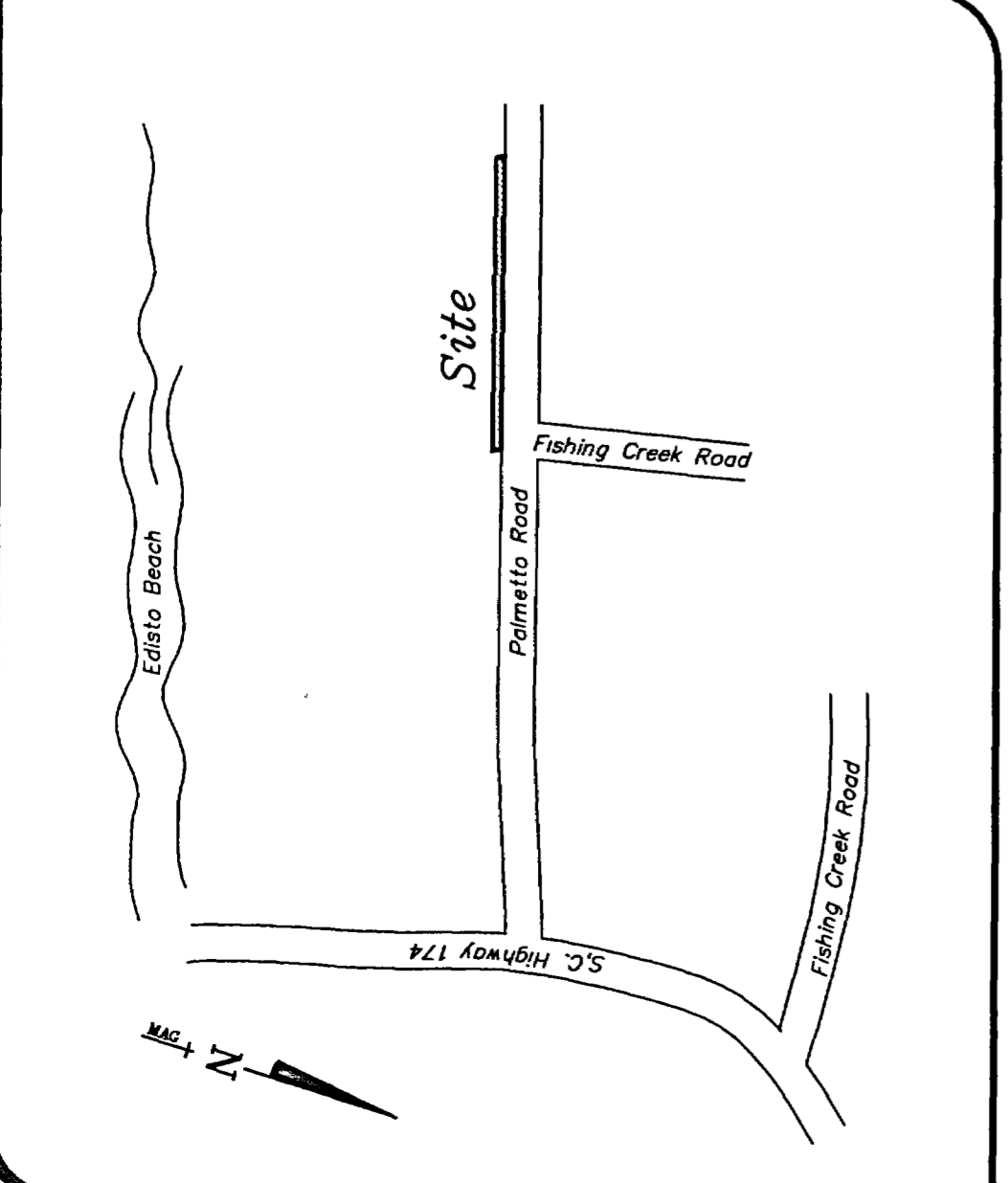
APPROVED PLAT  
07013 AVE 19 2005  
DATE

Register Mesne Conveyance  
Chris Jones

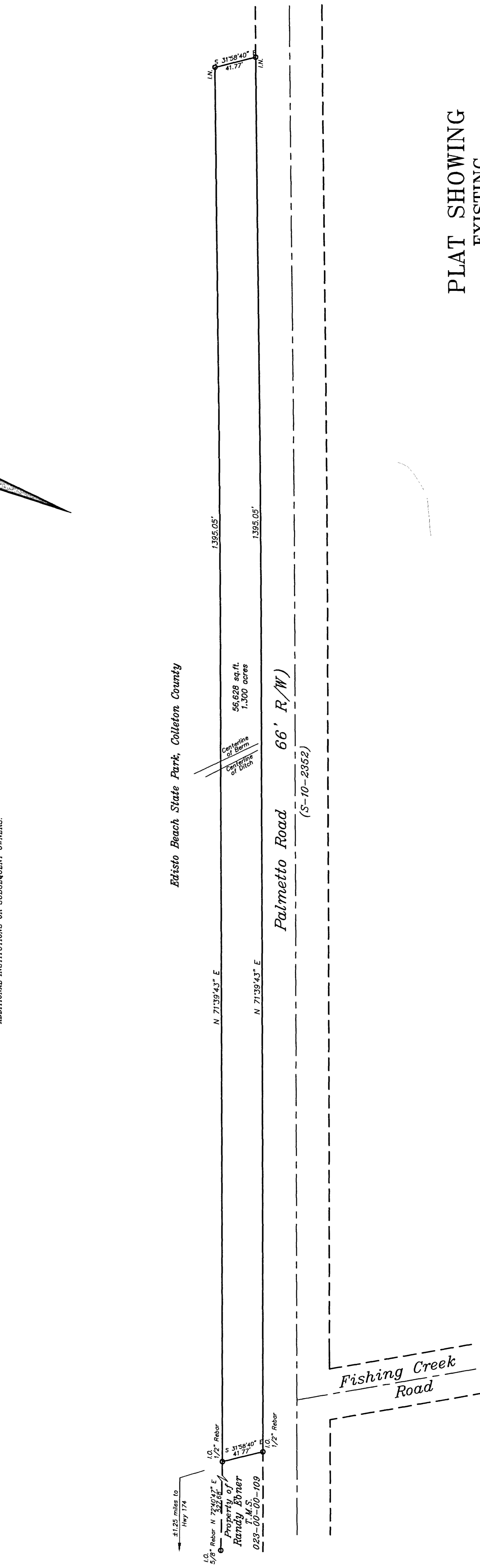
Charlotte, South Carolina  
Office of Register Mesne Conveyance  
Plat recorded this 19th day of August, 2005, at  
2:46 o'clock in Plat Book E.L. Page 158, and tracing cloth  
copy filed in File 8 Drawer --- Folder 13, Drawing No. 43.  
Original plat (a White Print) delivered to Chas. County Planning Bd.

APPROVED PLAT  
07013 AVE 19 2005  
DATE

Register Mesne Conveyance  
Chris Jones



LOCATION MAP  
N.T.S.

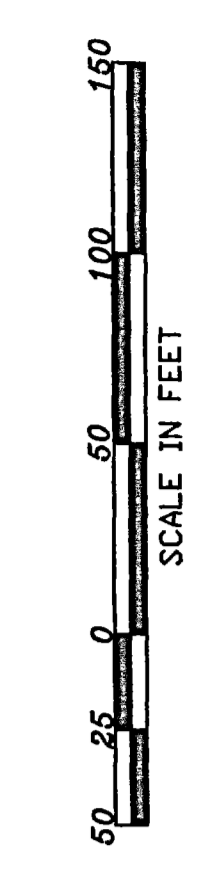


PLAT SHOWING  
EXISTING

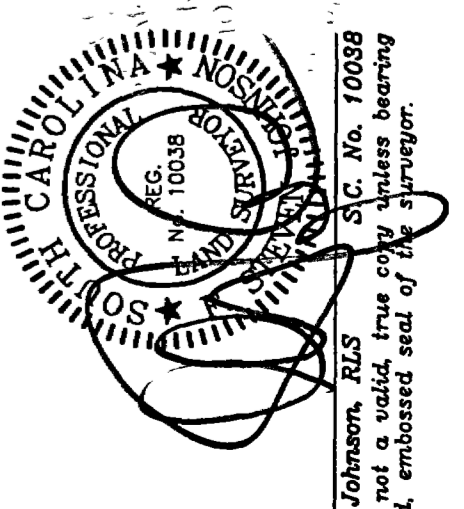
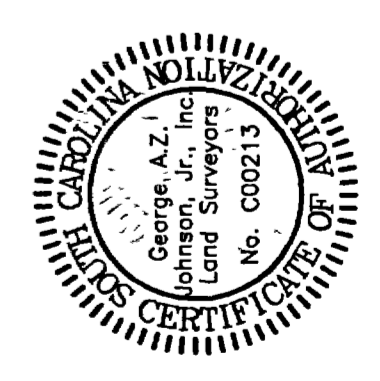
Tms. No. 023-00-00-141,  
A 1.300 ACRE TRACT OF LAND,  
LOCATED ON PALMETTO ROAD,  
OWNED BY  
THOMAS W. AND KAREN M. YEARGIN

LOCATED ON EDISTO ISLAND,  
CHARLESTON COUNTY, SOUTH CAROLINA

DATE: JULY 25, 2005 SCALE: 1" = 50'



GEORGE A.Z. JOHNSON, JR., INC.  
LAND SURVEYORS  
6171 SAVANNAH HIGHWAY  
RAVENEL, SOUTH CAROLINA 29470  
(843) 889.1492 Charleston No. 722.3892 Edisto No. 869.1495  
Fax No. (843) 889.1054



General Property Survey  
I, F. Steven Johnson, a Registered Professional Land Surveyor in the State of South Carolina, certify to owner(s) shown hereon that this survey was made in accordance with the requirements of the laws of the State of South Carolina, and that the surveying Class A-1 survey as specified therein.

F. Steven Johnson, RLS No. 10038  
This plat not a valid true copy unless bearing the raised, embossed seal of the surveyor.