

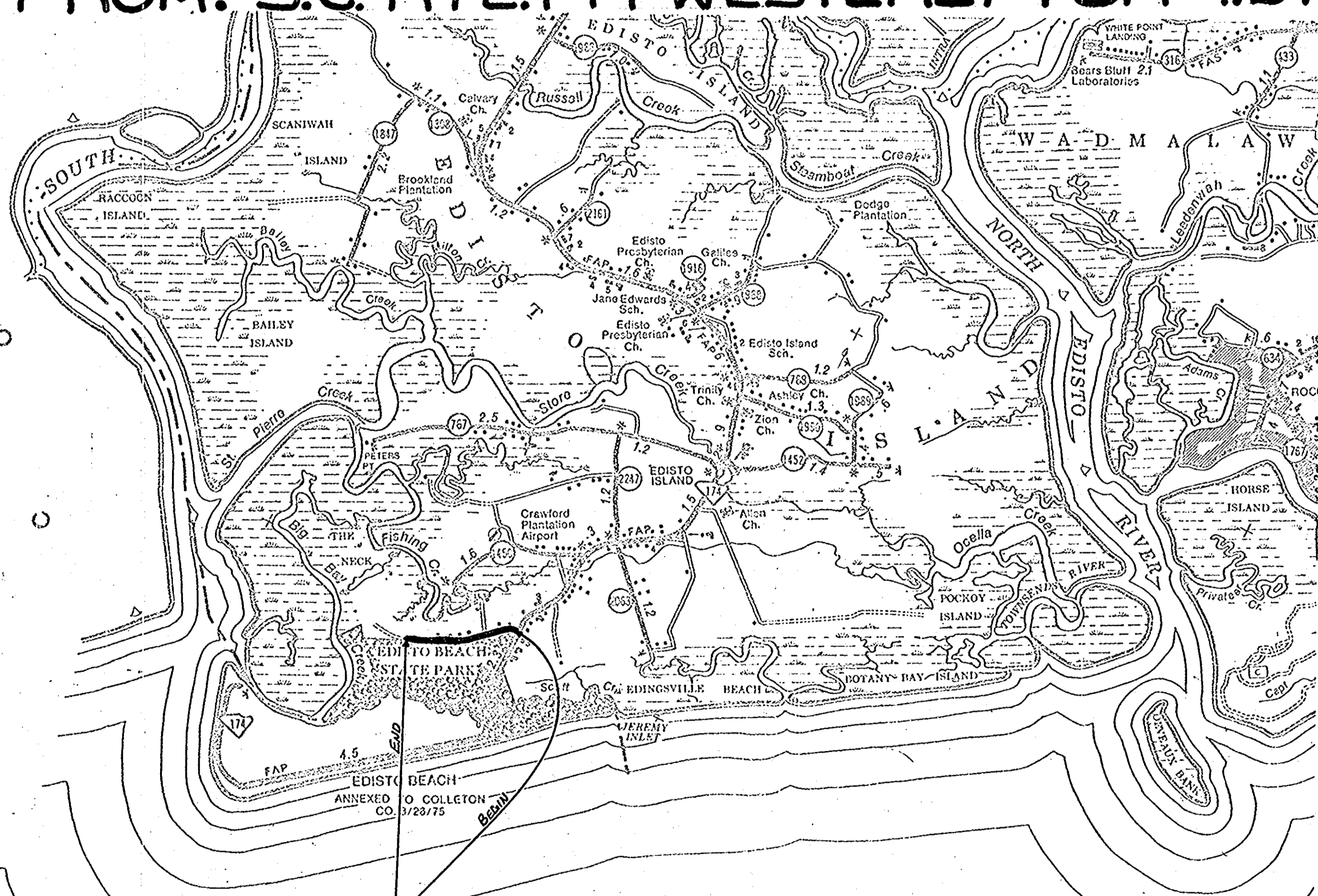
INDEX OF SHEETS

SHEET NO.	1	TITLE SHEET
	1-A	MOVING ITEMS
	2	TYPICAL SECTION
	3	SUPERELEVATION STD.
	4-6	PLAN AND PROFILE
	7-14	CROSS SECTIONS

SOUTH CAROLINA
STATE HIGHWAY DEPARTMENT
COLUMBIA

PLAN AND PROFILE OF PROPOSED
STATE HIGHWAY
CHARLESTON COUNTY
FILE: 10.123A PROJ. C-123A
ROAD S-2352

FROM: S.C. RTE. 174 WESTERLY FOR 1.3 MILES



ITEM No. 26425

FED. ROAD DIST. NO.	STATE	COUNTY	DOCKET NO.	F.A. PROJ. NO.	NO.	SHEET NO.	TOTAL SHEETS
3	S.C.	CHARLESTON	10.123A	C-123A	S-2352	1	14

SUMMARY OF ESTIMATED QUANTITIES

	QUANTITY	UNIT
CLEARING AND GRUBBING WITHIN ROADWAY	NEC.	L.S.
UNCLASSIFIED EXCAVATION	6,258	C.Y.
STABILIZED AGGREGATE BASE COURSE 6" UNIFORM	17,377	S.Y.
BITUMINOUS SURFACING (TRIPLE TREATMENT) TYPE 1 THRU 5	16,595	S.Y.
15 IN. R.C. PIPE CULVERT (CLASS III)	472	L.F.
18 IN. R.C. PIPE CULVERT (CLASS III)	252	L.F.
24 IN. R.C. PIPE CULVERT (CLASS III)	40	L.F.
18 IN. RE-LAID PIPE CULVERT	24	L.F.
4" PERFORATED PIPE UNDERDRAIN	100	L.F.
HAND PLACED RIPRAP	10	TONS
SEEDING (UNMULCHED)	6.258	M.S.Y.
FERTILIZER (10-10-10)	0.45	TON

see sheet No 1-A for Moving Items

3 DAYS BEFORE DIGGING IN
SOUTH CAROLINA
CALL 1-800-922-0983
PALMETTO UTILITY LOCATION SERVICE

CONVENTIONAL SIGNS

State Line	Trrolley Poles	○ ○ ○ ○
County Line	Power Poles	○ ○ ○ ○
City or Town Line	Telephone or Telegraph Poles	○ ○ ○ ○
Property Line	Morph	○ ○ ○ ○
Fence	Trees	○ ○ ○ ○
Shrubbery	Brush	○ ○ ○ ○
Grassy Road	Stumps	○ ○ ○ ○
Edge R.O.W. Lines of Proposed Road	Buildings	○ ○ ○ ○
Railroad	Bridge	○ ○ ○ ○
Cover or Embankment	Concrete Box Culvert	○ ○ ○ ○
Guard Rail	Pipe Culvert	○ ○ ○ ○
Point of Intersection (P.I.)	Drop Inlet and Culvert	○ ○ ○ ○
	Hub on Center Line	○ ○ ○ ○

FILE: 10.123A PROJ. C-123A ROAD S-2352
STA. 0+12.3 TO STA. 10+53.2
SEE SHEETS NO. 4-6
TRAFFIC DATA

LAYOUT
SCALE 1 INCH = 5280 FEET

Net Length of Roadway	1.333	Miles
Net Length of Bridge		Miles
Net Length of Project	1.333	Miles
Length of Exceptions		Miles
Gross Length of Project	1.333	Miles

LEGEND

PROPOSED PROJECT	---
OTHER ROADS	---

APPROVED FOR

DATE

MAYOR

COUNCILMEN

CLERK

RECOMMENDED BY:

E.L. Rinkhart 5-7-84
ENGINEER DATE

SUBMITTED BY:

Cyril Jaccan 5-16-84
ROAD ENGINEER DESIGN DATE

APPROVED BY:

David S. Smith 5-18-84
STATE HIGHWAY ENGINEER DATE

S.C. DEPARTMENT OF TRANSPORTATION
FEDERAL HIGHWAY ADMINISTRATION
APPROVED FOR DIVISION ADMINISTRATION

BY: _____ DATE _____
DISTRICT ENGINEER

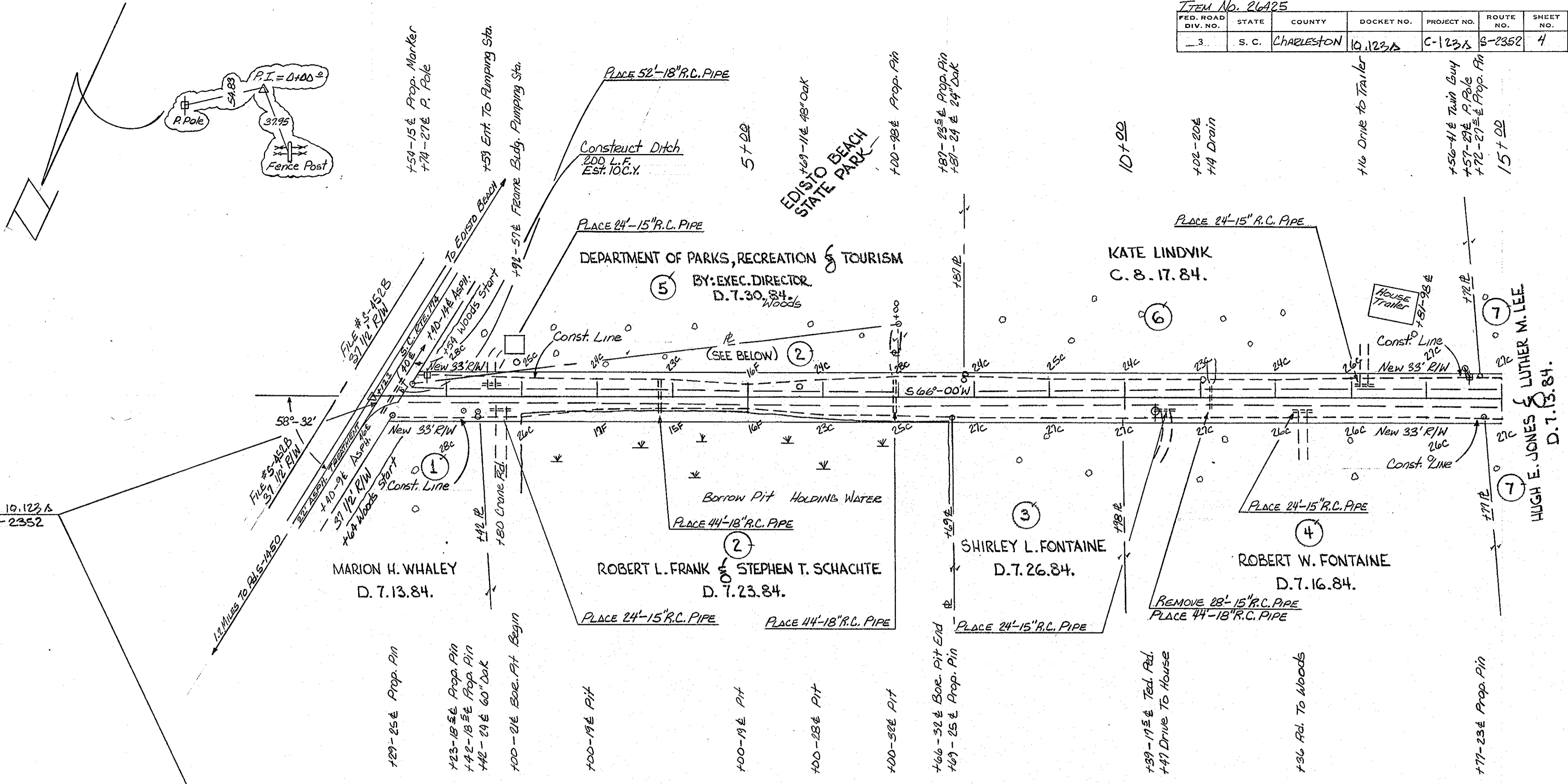
Note: All workmanship and material on this project conform with South Carolina State Highway Department Standard Specifications for Highway Construction dated 1973.

NOTES
 ① ALL POWER POLES PROPERTY OF S.C. ELECTRIC & GAS CO.
 ② ALL TELEPHONE CABLE PROPERTY OF SOUTHERN BELL.

NOTE
 CHARLESTON COUNTY PUBLIC WORKS DEPARTMENT'S RECORDS A 50' R/W FOR THIS ROAD, BUT THEY DON'T HAVE AN ALIGNMENT TO BASE THIS R/W ON. PROPERTY PINS FOUND IN PLACE ARE NOT CONSISTENT FOR AN ESTABLISHED R/W.

NOTE: LETTER FROM THE DIRECTOR OF THE DEPARTMENT OF PUBLIC WORKS DATED MARCH 10, 1983 STATES THAT PALMETTO ROAD WAS IN THE COUNTY MAINTENANCE SYSTEM.

SURVEY STA. 0+12.7 BEGIN FILE 10.123A
 PROJ. C-123A ROAD S-2352



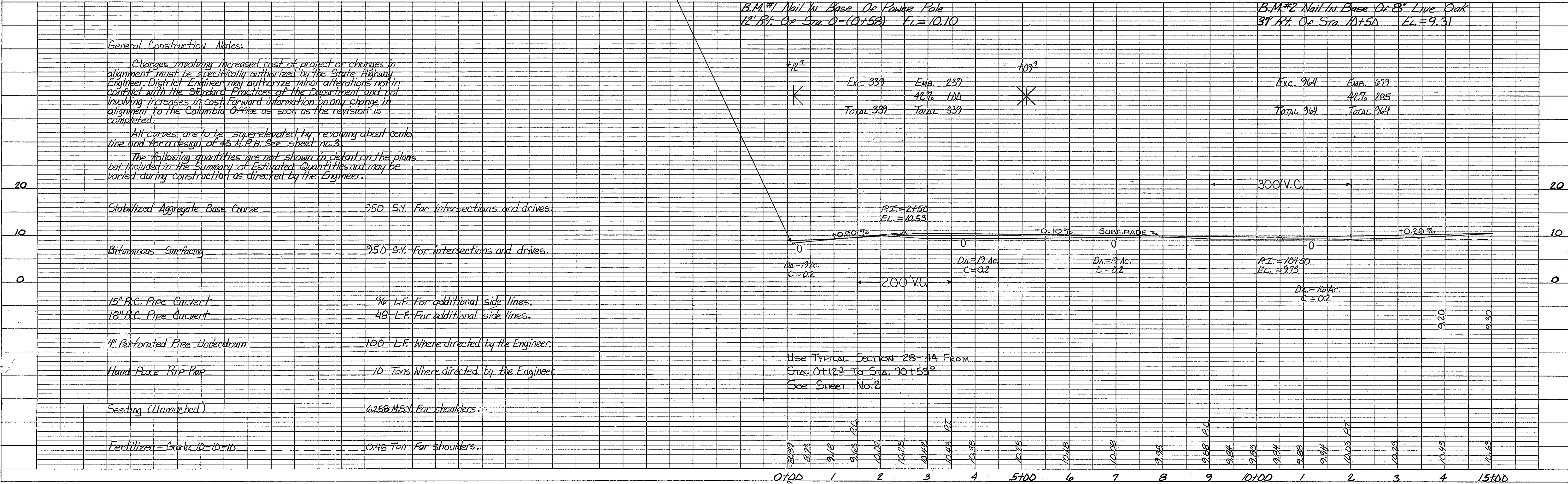
PLAN

DATE	7/27/84
BY	R.L.G.
REVISIONS	
NO.	
DATE	
BY	
REVISIONS	
NO.	
DATE	
BY	
REVISIONS	
NO.	

PROFILE

DATE	7/27/84
BY	R.L.G.
REVISIONS	
NO.	
DATE	
BY	
REVISIONS	
NO.	
DATE	
BY	
REVISIONS	
NO.	

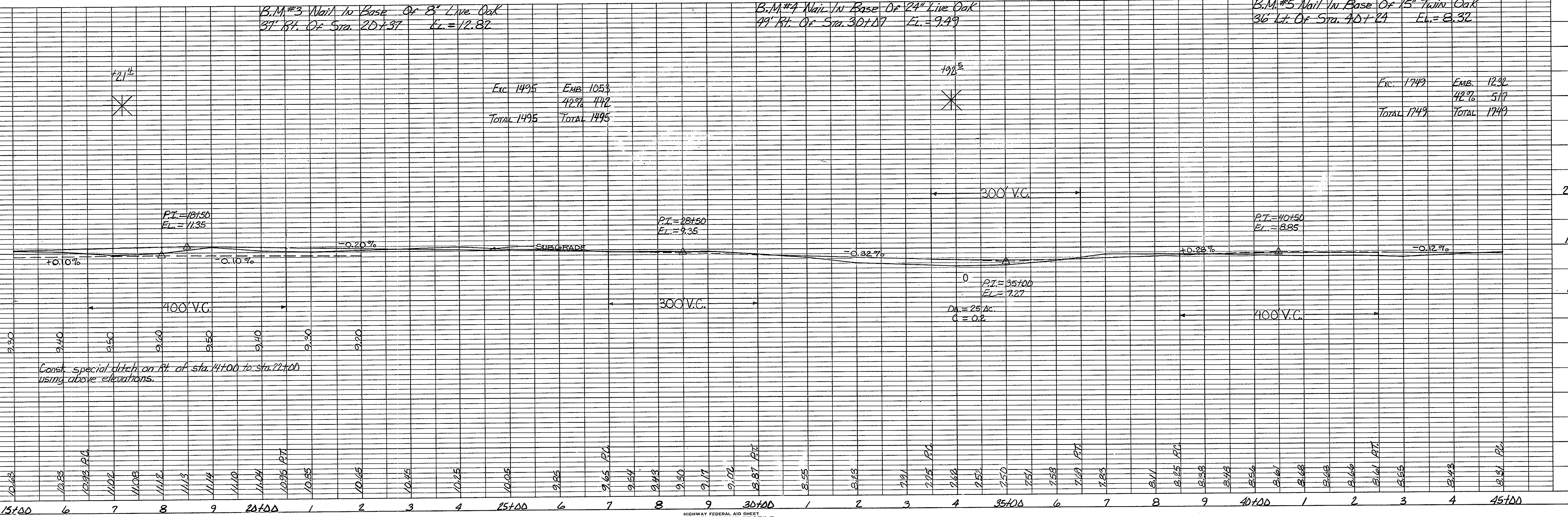
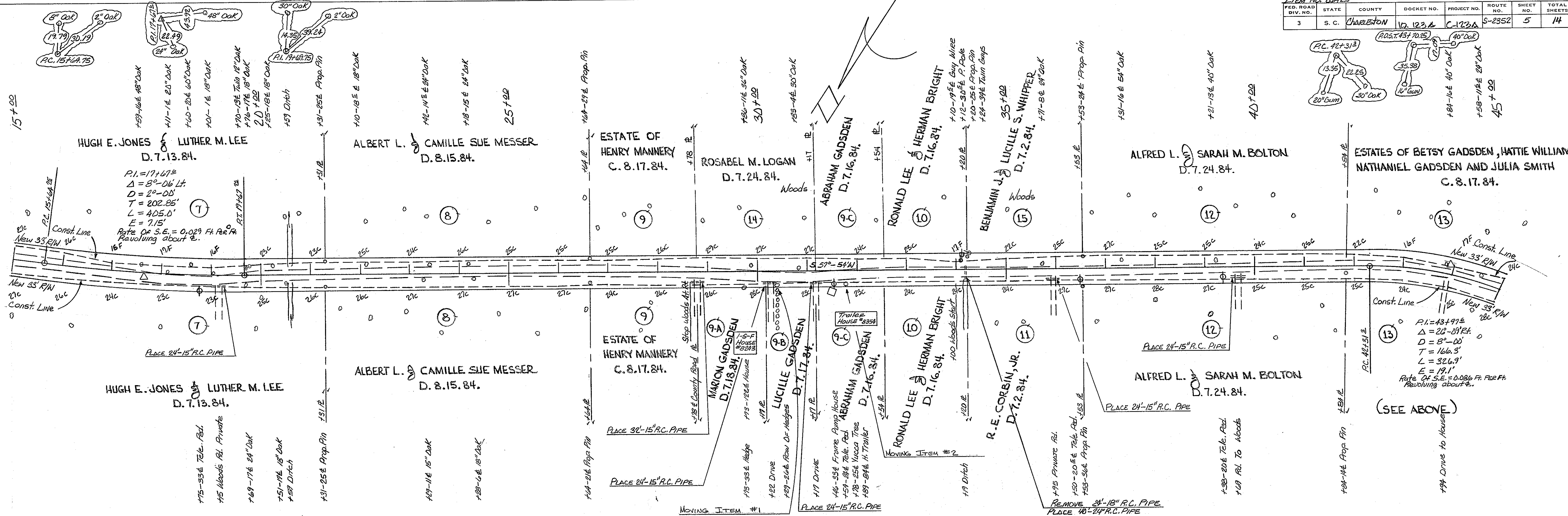
General Construction Notes:
 Changes involving increased cost of project or changes in alignment must be specifically authorized by the State Highway Engineer. District Engineer may authorize minor alterations not in conflict with the Standard Practices of the Department and not involving increases in cost. Forward information on any change in alignment to the Columbia Office as soon as the revision is completed.
 All curves are to be super-elevated by revolving about center line and for a design of 45 M.P.H. See sheet no. 3.
 The following quantities are not shown in detail on the plans but included in the Summary of Estimated Quantities and may be varied during construction as directed by the Engineer.



Charleston Co
 Ra S-2352
 Sheet 1 of 3

DATE	2/7/82
BY	R.L.S.
SURVEYED	
NOTE BOOK	
NO.	

DATE	2/7/82
BY	R.L.S.
STRUCTURE NOTATIONS CHECKED	
NOTE BOOK	
NO.	



Exc. 1495	Emb. 1053
	4276 442
TOTAL 1495	TOTAL 1495

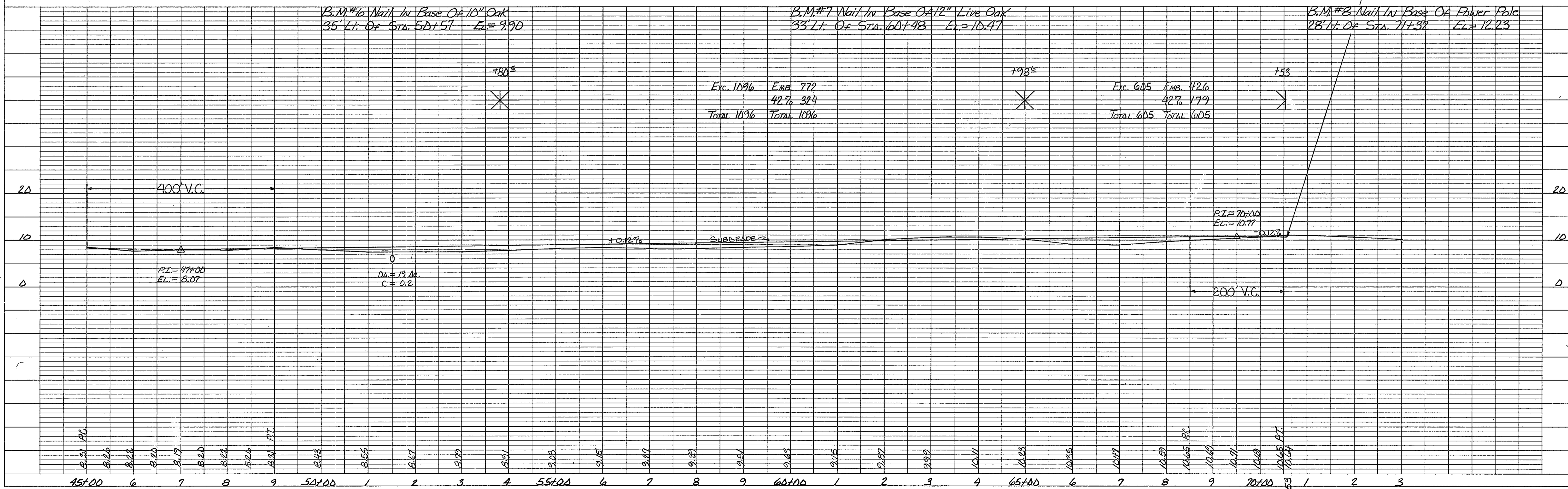
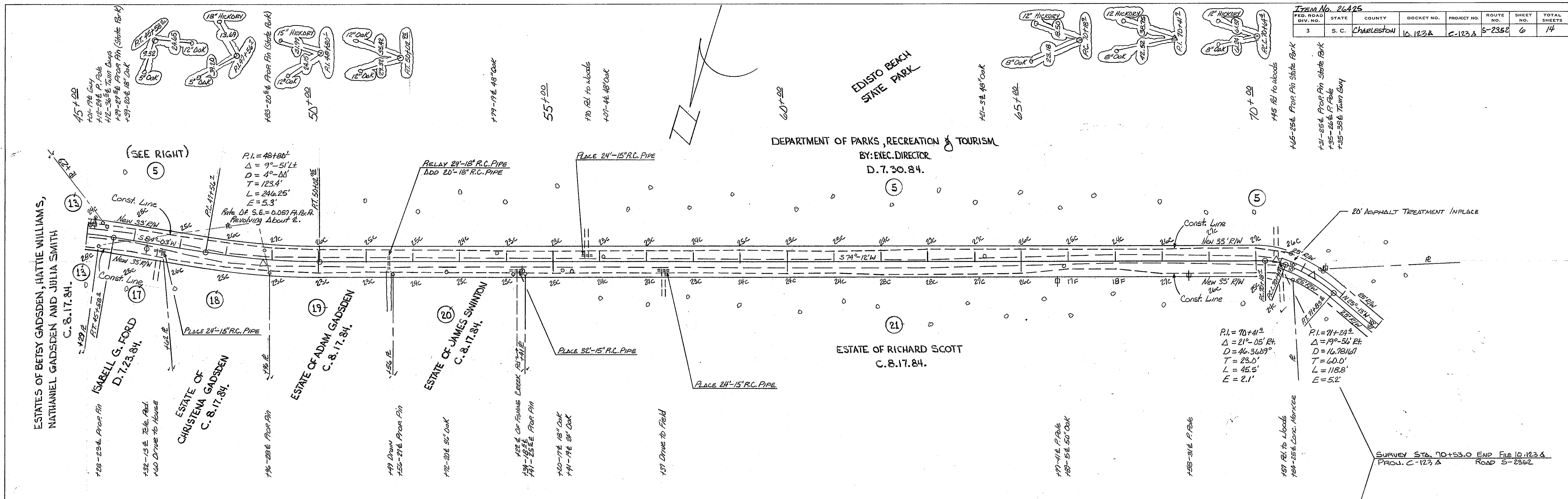
Exc. 1749	Emb. 1232
	4276 517
TOTAL 1749	TOTAL 1749

Charleston Co.
Rd. S-2352
Sheet 2 of 3

ITEM No. 26425							
FED. ROAD DIV. NO.	STATE	COUNTY	DOCKET NO.	PROJECT NO.	ROUTE NO.	SHEET NO.	TOTAL SHEETS
3	S. C.	CHARLESTON	16, 123A	C-123A	S-2352	6	14

PLAN	DATE
SURVEYED BY: Z.L.L.	12/27/84
NOTE BOOK NO.:	
ALIGNMENT CHECKED BY: RT. OF WAY CHECKED:	

PROFILE	DATE
SURVEYED BY: Z.L.L.	12/27/84
NOTE BOOK NO.:	
B.M.'S NOTED:	
STRUCTURE NOTATIONS CHECKED:	



CHARLESTON CO
 RD. S-2352
 Sheet 3 of 3