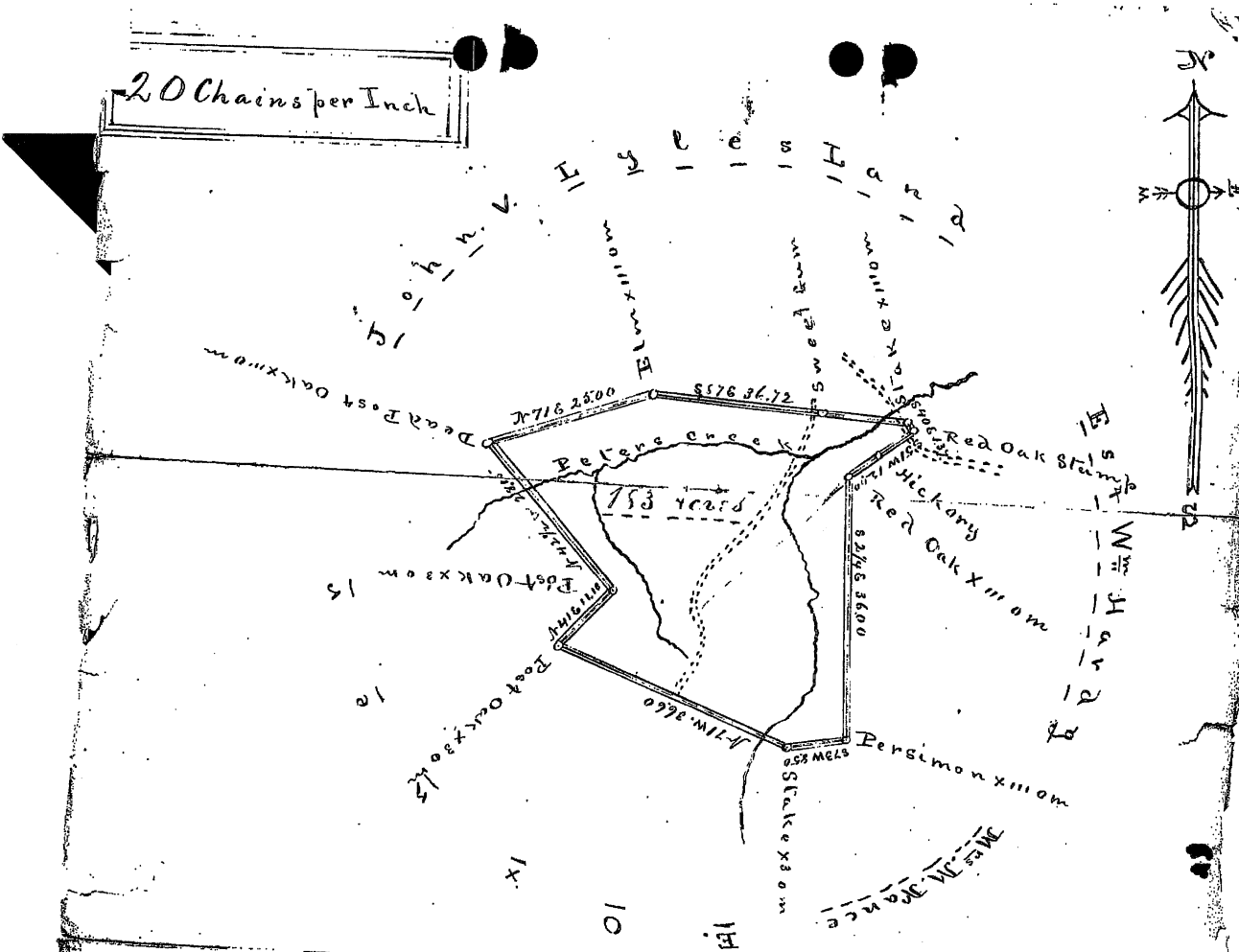
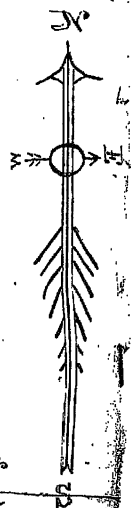


20 Chains per Inch



South Carolina

Wendover County

Pursuant to the request of John L. Pyles
I have resurveyed the above designated tract
of land, lying and being in State and County
aforesaid on waters of Peters Creek, and find
it to contain One Hundred and Eighty Three
Acres and hath such shape, landmarks and
boundaries as the above plat fully represents.

Surveyed Jan'y 23rd 1878.

G. M. Girardeau
Surveyor.

John L. Pyles
John L. Pyles