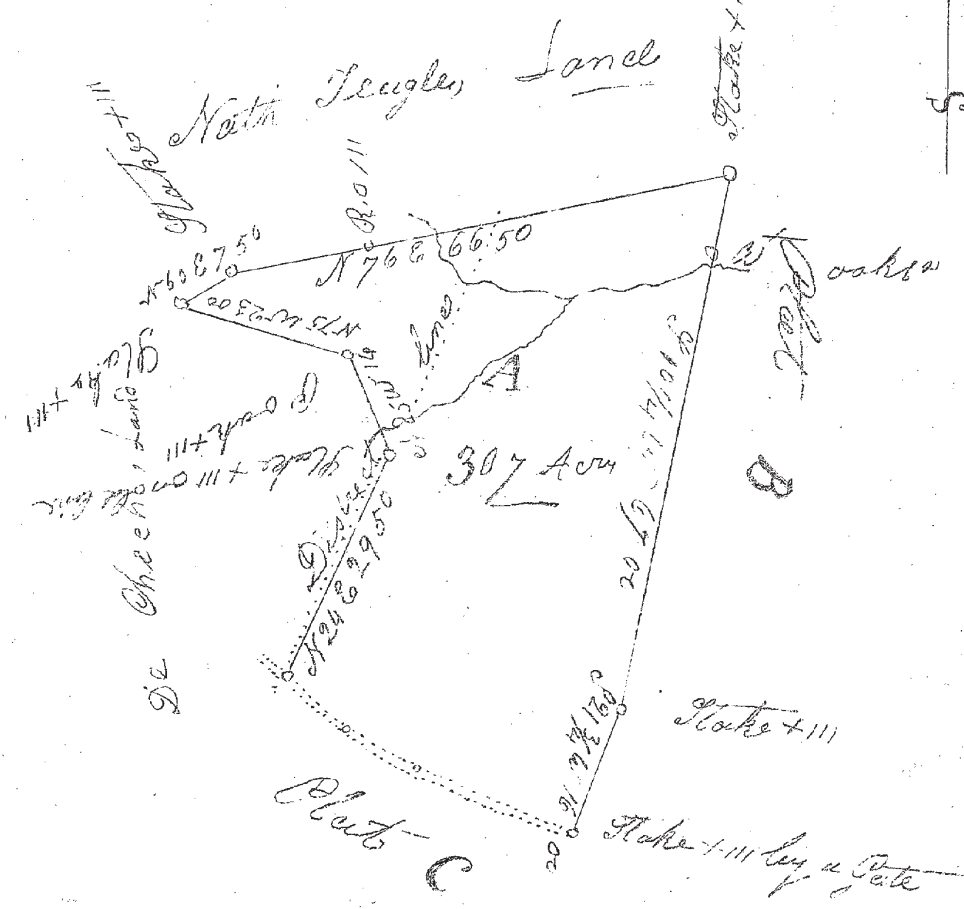


Scale of 200
ft



SOUTH CAROLINA

Pursuant to the request of Jesse Maybin Benj S Ogletree and Davis Caldwell commissioners I have re-surveyed and admeasured the above plat containing three hundred and seven acres and known by the letter A situate in Newberry and Union Districts and hath such form and marks as the above plat represents it being a part of the land Georg Clark was possessed of at the time of his death Surveyed December 1838.

RICH^d THOMSON

Certified a true copy: W.W. Childs

STATE OF SOUTH CAROLINA,
COUNTY OF NEWBERRY.

I, W.W. Childs, Ass't. Technician, U.S. Forest Service, do hereby certify that the above map is a true copy of a map found of record in the suit of Williamson T. Clark et al vs. S.L.H. Clark et al., in Clerk's Office for Newberry County.

W.W. Childs

W.W. Childs
Assistant Technician
U.S. Forest Service.