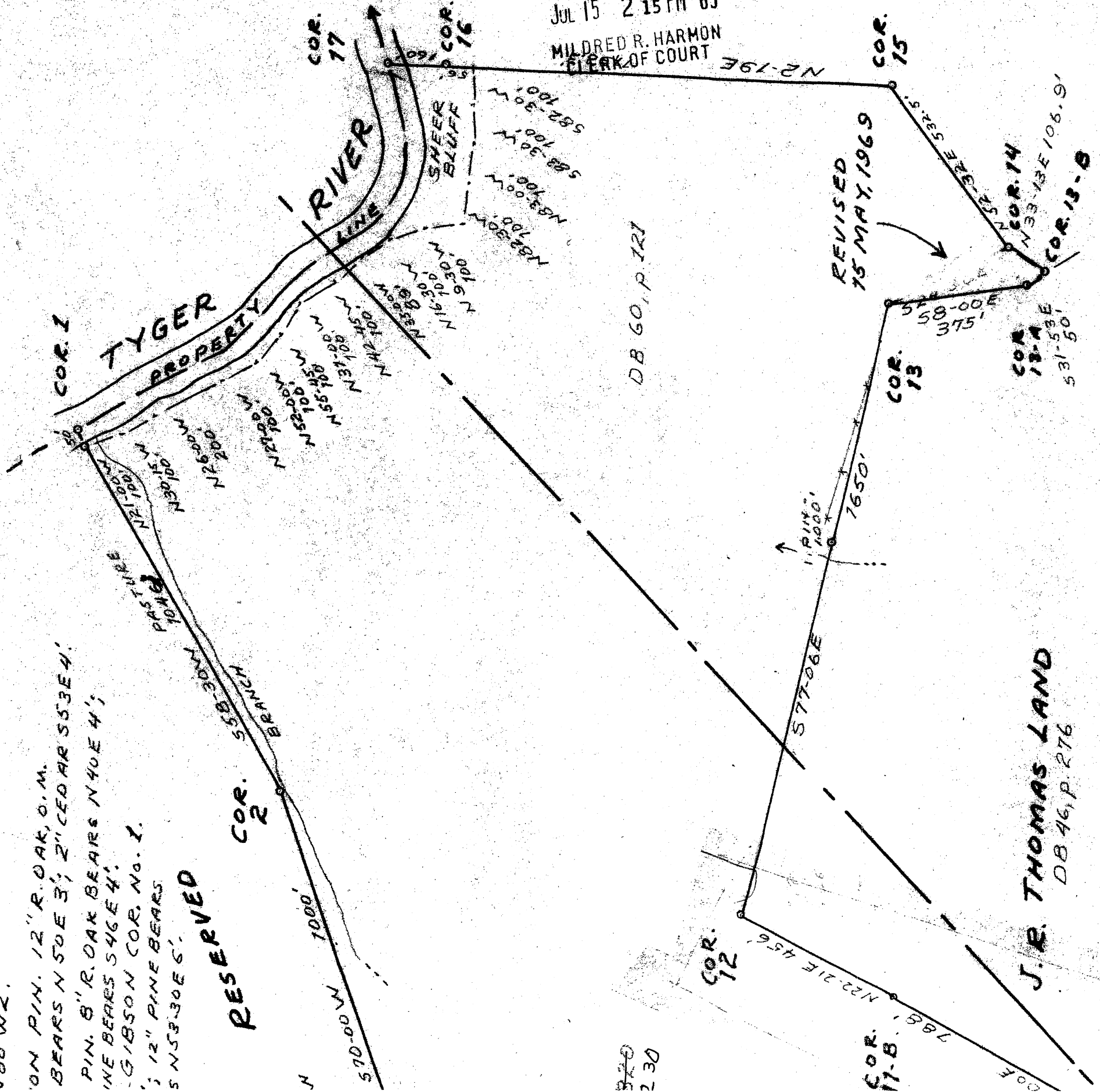


PIN. 20" PINE BEARS
V80 W2;
ON PIN. 12" R. OAK, 0. M.
BEARS N 50 E 3'; 2" CEDAR 55' 3 E 4';
PIN. 8" R. OAK BEARS N 40 E 4';
PINE BEARS 546 E 4';
GIBSON COR. NO. 1.
12" PINE BEARS
S N 53 30 E 6'.

RESERVED

AB-51



FILED
MILDRED R. HARMON
CLERK OF COURT
JUL 15 2 15 PM '69
CATAWBA TIMBER COMPANY
GIBSON TRACT
PB "X", P. 127

DB 60, P. 127

J. R. THOMAS LAND
DB 46, P. 276

REVISED
15 MAY, 1969

NOTE: SURVEY BEGINS AT CORNER NO. 1
AND RUNS COUNTER-CLOCKWISE.

LAND AREA: 147 Ac. ±
WATER AREA: 1 Ac. ±
TOTAL AREA: 148 ACRES, ±

95 Ac ± 53 Ac ± REC
UNION & NEWBERRY COUNTIES, S. C.
SURVEY FOR THE EAST HIGHLANDS COMPANY
OF THE LUCY FRANCES A. LORICK TRACT, LO.
CATED 3 MILES N. OF MAYBINTON.

SURVEYED, 5-10 MAY, 1969. DAN E. COLLINS, RLS
REVISED 15 MAY, 1969,
AFTER CRAWFORD PLAT
FOUND.

Dan E. Collins



12290.

CORNER DESCRIPTIONS:

CORNER 11-A IS OLD IRON PIN.
N 27° E 5'; 4" PINE BEARS N 80° W

CORNER 11-B IS OLD IRON PIN.
BEARS S 65° E 7'; 4" PINE BEAR

CORNER 13-A IS OLD IRON PIN.
6" PINE BEARS S 48° W 2'; 2" PINE BEAR

CORNER 13-B IS IRON PIN. GIBSON
8" PINE BEARS S 29° 30' W 6'; 12" PINE BEARS
S 84° 00' E 14'; 6" PINE BEARS N 53°

CORNER 1 IS POINT IN CENTER OF RIVER.
SET IRON PIN ON S. BANK IN PASTURE. A
20" WATER OAK BEARS N 20° W 20' FROM PIN.

CORNER 2 IS IRON PIN. 5" WATER OAK BEARS
S 48° E 5'; 3" CEDAR BEARS N 5° E 5'.

CORNER 3 IS IRON PIN. 12" CEDAR N 2° E 6'; 2" PINE
BEARS S 68° W 3'; 7" CEDAR BEARS S 60° E 5'.

CORNER 4 IS IRON PIN. 7" PINE BEARS N 20° E 12';
2" PINE BEARS S 27° W 9'.

CORNER 5 IS IRON PIN. 12" PINE BEARS S 72° E 5';
12" PINE BEARS N 22° W 1'; 7" PINE BEARS S 31° W 2'.

CORNER 6 IS IRON PIN. 6" LOCUST BEARS S 83° E 7';
6" CEDAR BEARS S 27° W 7'.

CORNER 7 IS IRON PIN. GATE POST BEARS N 83° W 30'.
5" PINE BEARS N 80° W 5';
5" PINE BEARS S 40° E 8'.

CORNER 9 IS NAIL IN HWY. IRON PIN
ON LINE BEARS N 6° 15' E 29'.

CORNER 10 IS NAIL IN HWY.

CORNER 11 IS IRON PIN BY 20" WATER
OAK X III.

CORNER 12 IS IRON PIN BY 20" WHITE
OAK X III. 22" WHITE OAK BEARS

S 9° W 5'; 8" PINE BEARS N 75° W 8'.

CORNER 13 IS IRON PIN BY
DEAD MULBERRY X III. 8" CEDAR
BEARS S 7° W 9'; 8" CEDAR BEARS
S 56° W 8'; 6" CEDAR BEARS
N 22° E 7'.

CORNER 14 IS IRON PIN - GIBSON
COR. NO. 2. 12" PINE BEARS S 2° 30' W
10.6'; 4" PINE BEARS N 7° 45' W
3'; 14" PINE BEARS N 59° 15' E 14'.

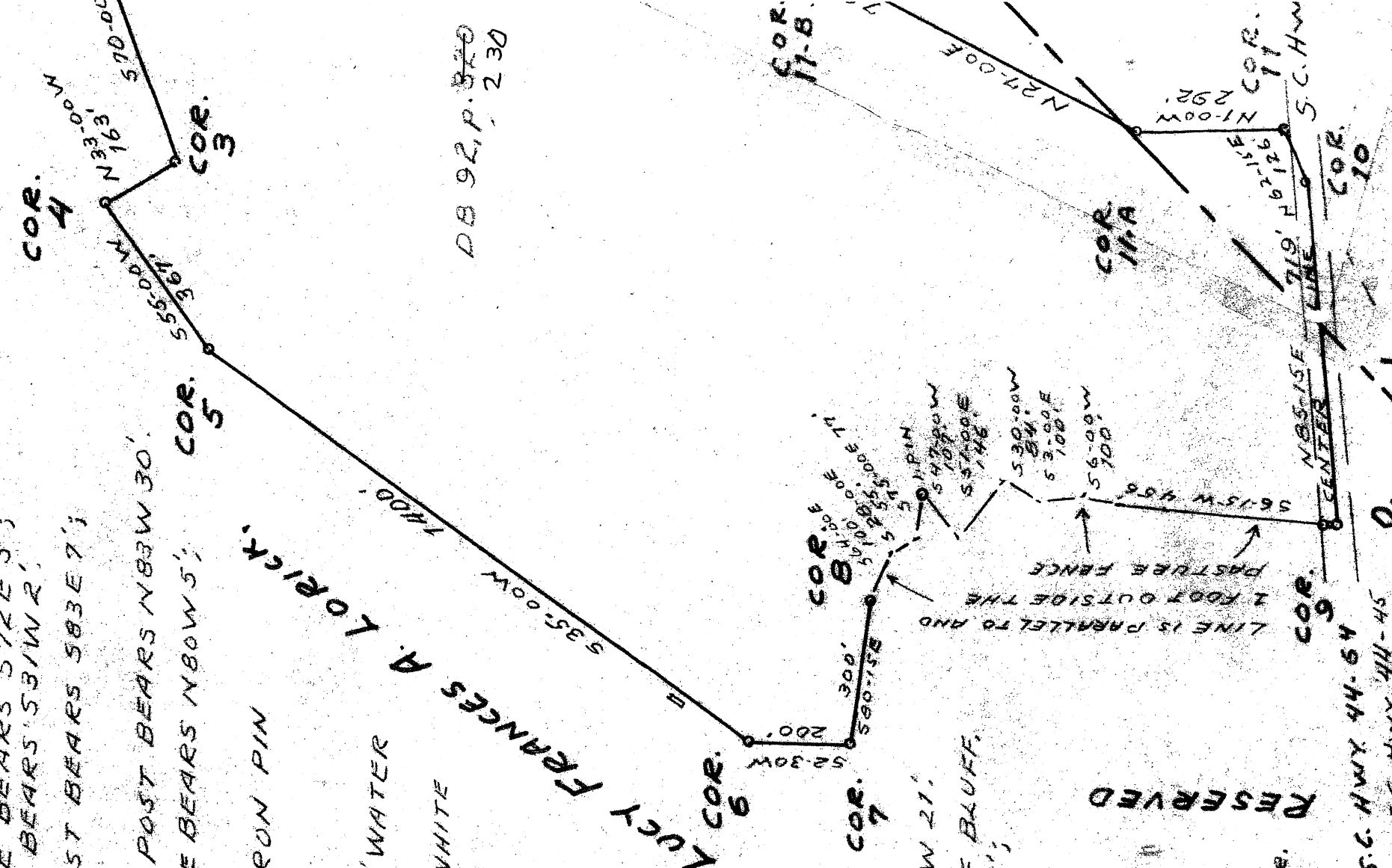
CORNER 15 IS IRON PIN -
GIBSON COR. NO. 3. 14" PINE BEARS
S 30° 00' W 3.5'; 8" PINE BEARS
N 37° 00' E 5.6'; 14" PINE BEARS S 5° 30' W 21'.

CORNER 16 IS IRON PIN AT TOP OF BLUFF.
6" WATER OAK BEARS S 5° 00' E 10.6';
10" RED OAK BEARS N 57° 30' E 9.5'.

CORNER 17 IS POINT IN CENTER
OF TYGER RIVER.

PLAT REFERENCES:

- 1 THOMAS PLACE PLAT, DATED
JAN. 20, 1934, BY E.O. COUNTS, SUR.
RECORDED IN PLAT BK. "M", P. 6,
NEWBERRY CO. OCC.
- 2 CATAWBA TIMBER CO'S
GIBSON TRACT PLAT, BY
DAVIS & FLOYD, ENGRS. DATED
FEB. 20, 1967. RECORDED IN
PLAT BK. "X", P. 127, NBY CO. OCC.
- 3 MARGARET A. GIBSON PLAT, DATED
8 NOV, 1966, BY T.L. BOOZER, PE, E.R.S.
NOT RECORDED.
- 4 M.E. ABRAM'S PLAT OF 129 3/10 AC.
(J.R. THOMAS PLACE) SURVEYED
19 DEC., 1939 BY J.R. CRAWFORD,
SURVEYOR,
NOT RECORDED.



FRANCES A. LORICK.

LUCY COR. 6

DB 92, P. 520
- 230

S.C. HWY. 44-64
TO S.C. HWY. 44-45
← 1 1/2 MI.

RESERVED

TWP. 4 S. COUNTY 3
R. 1 W. COUNTY 3
HURON, MICH.
GOSWEN CORP.
SHOWSBY
COUNTY

TRACT No. 7
DB 100 - 50