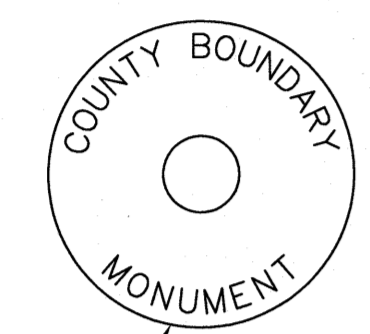
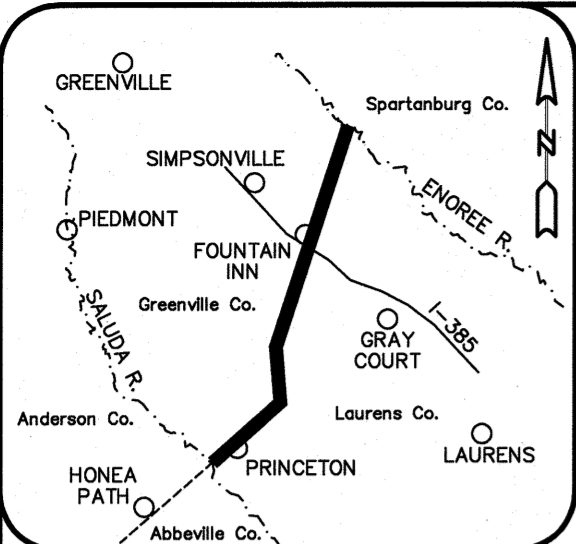


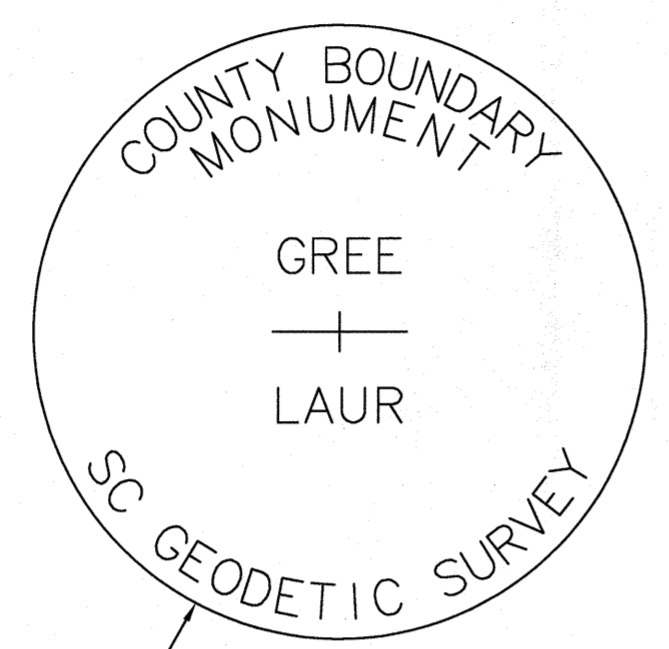
MATCH
LINE

SHEET 2
SHEET 1

BASIS OF BEARING
SC GRID NAD 83 (2011)
EPOCH 2010.00



TYPICAL WASHER STAMPING
(SET MAG NAIL WITH WASHER)



TYPICAL DISK STAMPING
(SET #8 REBAR WITH DISK)

GREENVILLE CO., SC

ANDERSON CO., SC

ABBEVILLE CO., SC

LAURENS CO., SC

STONE WITH "X" & HACKS BELIEVED TO BE "STONE IN MILLY PUTNAMS FIELD" (REF. #2)
SC GRID NAD 83 (2011)
EPOCH 2010.00
N = 1,004,784.64 ft
E = 1,628,378.61 ft
LAT = 34 35 19.73632
LONG = 82 14 05.20517

APPROXIMATE JOSEPH KELLET GRANT

APPROXIMATE TRACT SHOWN ON REF. #14 PROPERTY TO THE NORTH SHOWN AS "ESTATE OF MITTIE PUTMAN AND LUCIAN GRAY"

N 01°49'10" E
19558.18' (TOTAL)

S 01°49'10" W
10285.91' TIE
(9661.77')

POINT IN EAST EDGE OF REEDY RIVER
SC GRID NAD 83 (2011)
EPOCH 2010.00
N = 985,236.32 ft
E = 1,627,757.64 ft
LAT = 34 32 06.29970
LONG = 82 14 09.83580

SET #8 REBAR WITH DISK
118.93' FROM POINT IN EAST
EDGE OF REEDY RIVER

N 52°28'18" E
29844.41' (TOTAL)
(15009.94')

STONE SHOWN AS "OLD STONE" ON GREENVILLE AND LAURENS COUNTY LINE (REF. #12)
"STONE ON COUNTY LINE" (REF. #13)

SET #8 REBAR WITH DISK
194.02' FROM CENTERLINE
OF SALUDA RIVER
(14834.47')

SET #8 REBAR WITH DISK
311.22' FROM CENTERLINE
OF SALUDA RIVER

POINT IN CENTERLINE OF SALUDA RIVER AT MOUTH OF LINE CREEK
SC GRID NAD 83 (2011)
EPOCH 2010.00
N = 967,056.47 ft
E = 1,604,089.47 ft
LAT = 34 29 03.58127
LONG = 82 18 49.97597

APPROXIMATE 1766
CHEROKEE NATION LINE

LEGEND

—————	COUNTY LINE AS SURVEYED
—————	TIE LINE
- - - - -	APPROXIMATE ROAD
- - - - -	APPROXIMATE RIVER

PRELIMINARY PLAT NOT FOR RECORDATION, CONVEYANCES OR SALES

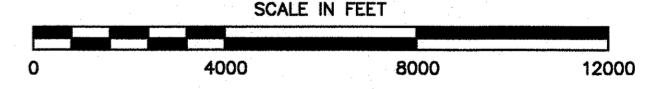
Sheet 1 of 2

Re-Establishment of the Greenville County and
Laurens County Boundary from the Saluda River
Northeast to the Enoree River
GREENVILLE COUNTY, S.C.
LAURENS COUNTY, S.C.

SURVEY FOR:
SOUTH CAROLINA GEODETIC SURVEY
5 GEOLOGY ROAD
COLUMBIA, SC 29212

DATE: 03-26-2018
SCALE: 1" = 4000'
JOB NO.: 150109.000
ACAD FILE: SCgrid2011.dwg

COMPUTED BY: RAP
DRAWN BY: RAP
CHECKED BY: FAR

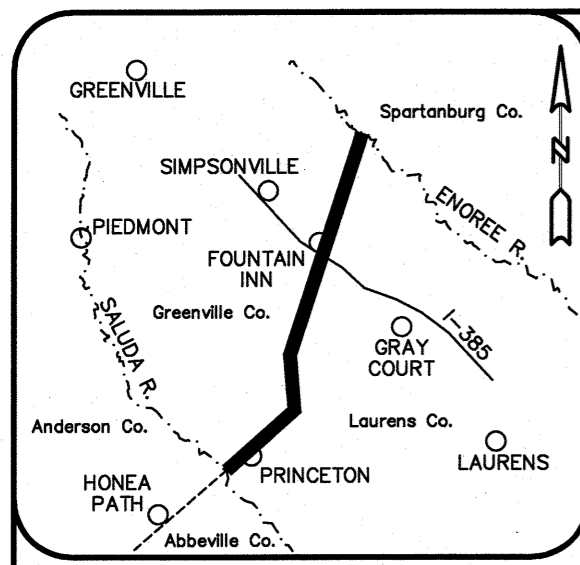


LAND DEVELOPMENT SERVICES
45 SPRING STREET SW CONCORD (704) 786-5404
CONCORD, NC 28025 FAX (704) 786-7454

S.C. CERTIFICATE OF AUTHORIZATION NO. C00591

I, R. ANDREW PLETCHER, HEREBY STATE THAT TO THE BEST OF MY PROFESSIONAL KNOWLEDGE, INFORMATION, AND BELIEF, THE SURVEY SHOWN HEREON WAS MADE IN ACCORDANCE WITH THE REQUIREMENTS OF THE STANDARDS OF PRACTICE MANUAL FOR SURVEYING IN SOUTH CAROLINA, AND MEETS OR EXCEEDS THE REQUIREMENTS FOR A CLASS A SURVEY AS SPECIFIED THEREIN.

PROFESSIONAL LAND SURVEYOR LICENSE NO. 22760



VICINITY MAP
NOT TO SCALE

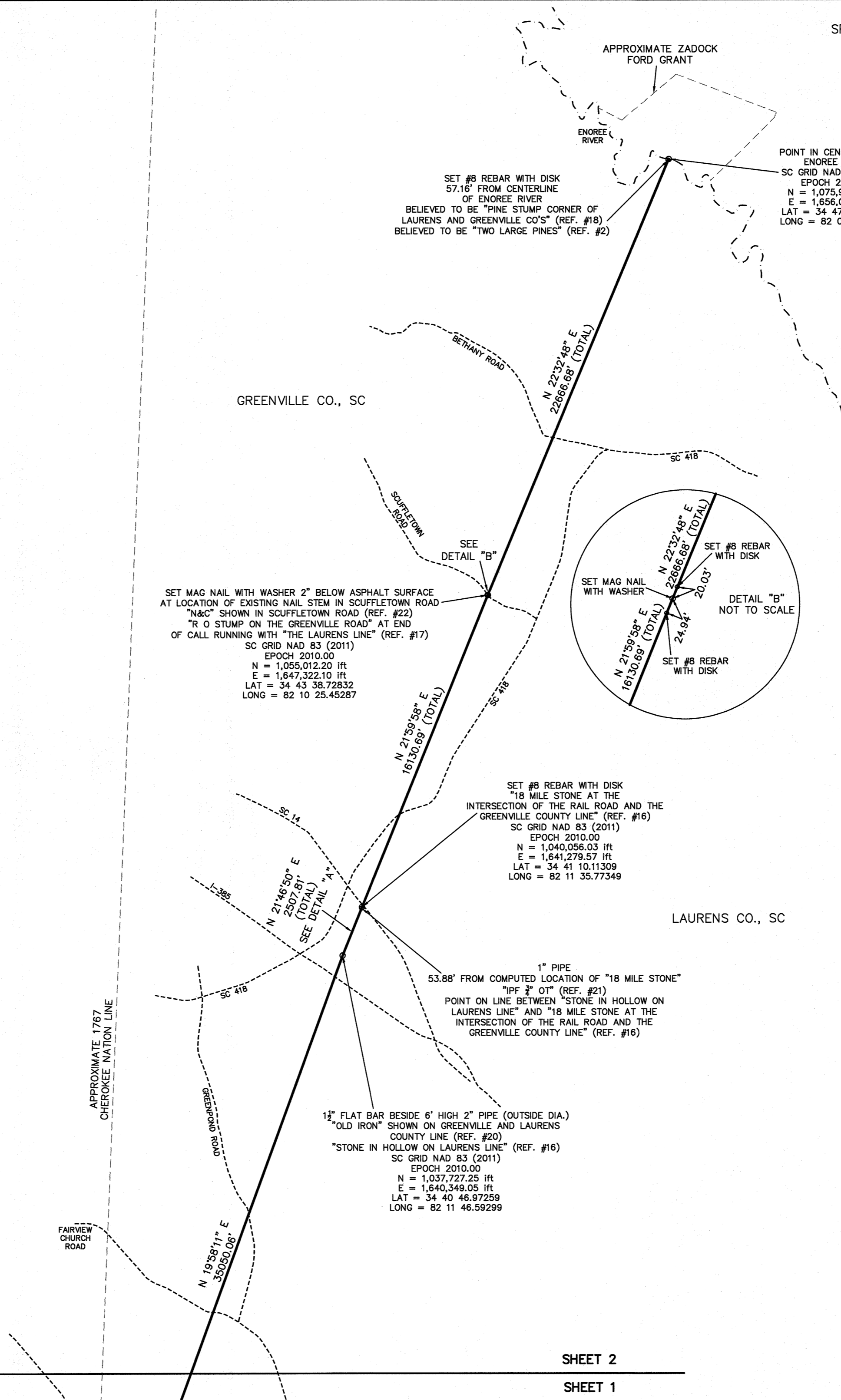
REFERENCES:

1. MAP SHOWING THE "BOUNDARY LINE BETWEEN THE PROVINCE OF SOUTH CAROLINA AND THE CHEROKEE INDIAN COUNTRY"; DATED MAY 8, 1766.
2. "MAP OF FAIRVIEW COUNTY SOUTH CAROLINA" BY WM. H. YELDELL and W. H. NEWELL; SURVEYED 1906.
3. MAP OF "LAURENS DISTRICT, SOUTH CAROLINA"; SURVEYED BY HENRY GRAY, 1820; IMPROVED FOR MILLS' ATLAS, 1825.
4. MAP OF "GREENVILLE DISTRICT, SOUTH CAROLINA"; SURVEYED BY GEORGE SALMON, 1820; IMPROVED FOR MILLS' ATLAS, 1825.
5. "MAP OF PROPOSED NEW COUNTY OUT OF PORTIONS OF SPARTANBURG AND LAURENS" BY THEOD. C. HAMBY AND WILLIAM MARTIN; SURVEYED MAY 1913.
6. "MAP OF HIGHLAND COUNTY SOUTH CAROLINA" BY WM. H. YELDELL and W. H. NEWELL; SURVEYED 1907.
7. "FULL DESCRIPTIVE MAP AND SKETCH OF GREENVILLE CO." BY PAUL B. KYZER; DATED 1882.
8. "A COMPLETE MAP AND SKETCH OF LAURENS COUNTY S.C." BY KYZER & HELLMAS; DATED 1883.
9. "AN ACCURATE MAP OF NORTH AND SOUTH CAROLINA WITH THEIR INDIAN FRONTIERS" BY HENRY MOUZON AND OTHERS; PUBLISHED MAY 30, 1775.
10. "AN ACT TO ALTER THE LINE OF DIVISION BETWEEN THE COUNTIES OF LAURENS AND GREENVILLE"; DATED DECEMBER 21, 1792.
11. CODE OF LAWS OF SOUTH CAROLINA 1976; VOLUME 1A; 4-3-280 AND 4-3-350.
12. MAP TITLED "PROPERTIES OF M.P. SENN EST. AND SALLIE T. SENN EST." BY W.N. WILLIS; DATED MAR. 14, 1964; GREENVILLE PLAT BOOK GGG, PGS. 86 & 87.
13. GREENVILLE DEED BOOK GGG, PG. 435; DATED JANUARY 17, 1896.
14. GREENVILLE PLAT BOOK R, PG. 57B; DATED FEBRUARY 7, 1913.
15. GREENVILLE LAND GRANT BOOK A, PAGE 295; SURVEYED JAN. 3, 1785.
16. GREENVILLE DEED BOOK RR, PGS. 756 TO 773; DATED APRIL 27, 1886.
17. GREENVILLE DEED BOOK KK, PG. 121; DATED DEC. 28, 1860.
18. MAP TITLED "MAP NO. 4 A. R. HUNTER EST." BY W.J. RIDDLE; DATED AUG. 1947; GREENVILLE PLAT BOOK S, PG. 25.
19. ZADOCK FORD LAND GRANT; SURVEYED JUNE 18, 1784.
20. MAP TITLED "AS-BUILT SURVEY FOR VICELLON, INC." BY FREELAND & ASSOCIATES, INC.; LAST REVISED DECEMBER 27, 2002; GREENVILLE PLAT BOOK 48F, PG. 52.
21. MAP TITLED "SURVEY FOR JAMES E. CASHION, JR." BY C. O. RIDDLE SURVEYING CO., INC.; DATED AUG. 31, 1992; GREENVILLE PLAT BOOK 23C, PG. 100.
22. MAP TITLED "SURVEY FOR FRANK L. WILLIAMS" BY JOHN WOODS; DATED MAY 8, 1991; GREENVILLE PLAT BOOK 20R, PAGE 76.

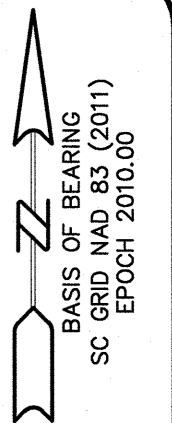
NOTES:

1. TRAVERSES ADJUSTED BY THE LEAST SQUARES ADJUSTMENT METHOD.
2. ALL DISTANCES ARE HORIZONTAL GRID DISTANCES.
3. SC GRID NAD 83 (2011) EPOCH 2010.00 BASIS OF BEARING DERIVED FROM SCGS NETWORK RTK (HORIZONTAL POSITIONAL ACCURACY = 0.07") USING GEIOD MODEL GEIOD12B. UNITS ARE INTERNATIONAL FEET.

MATCH
LINE

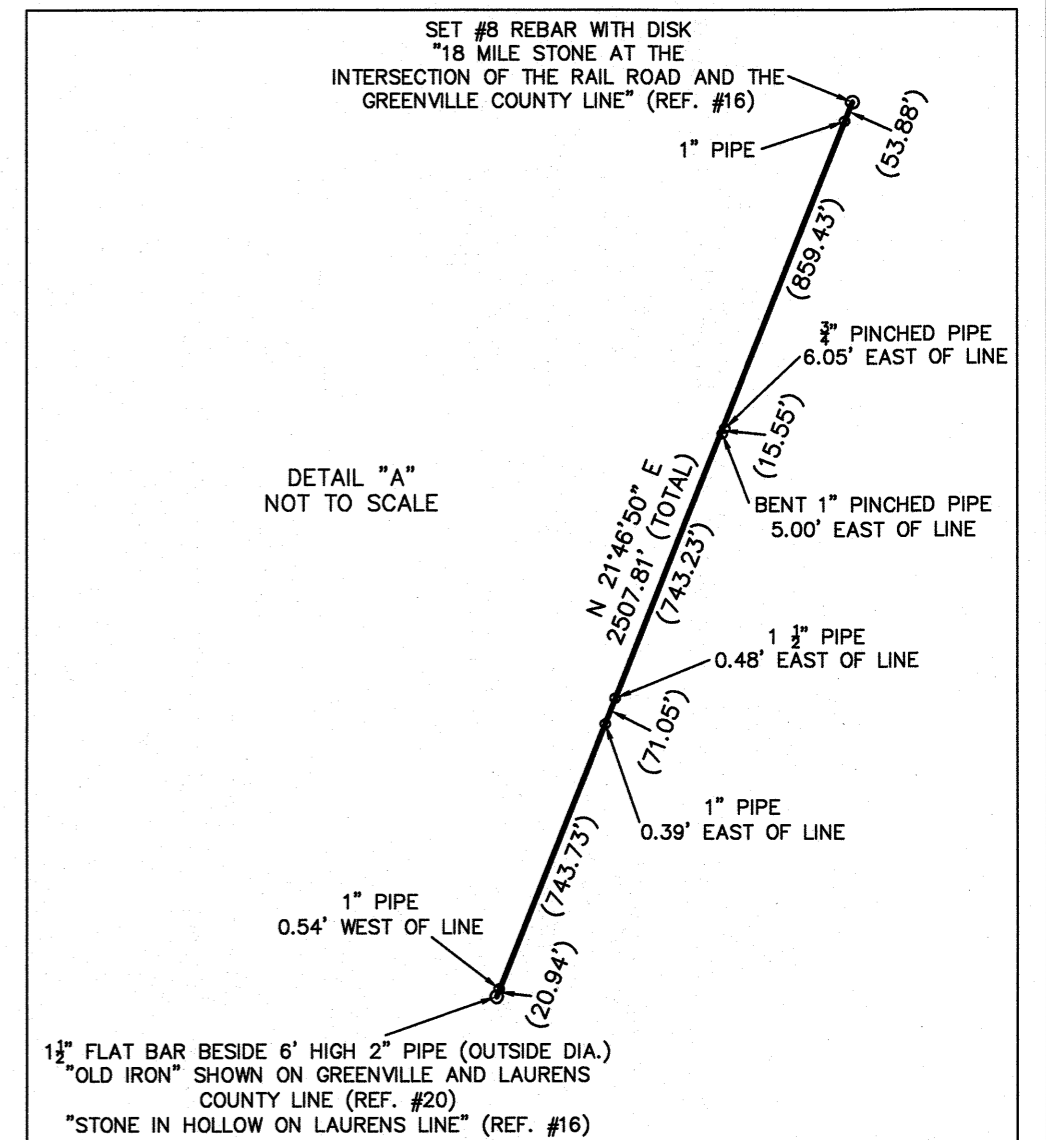


SPARTANBURG CO., SC



LEGEND

- COUNTY LINE AS SURVEYED
- TIE LINE
- - - - - APPROXIMATE ROAD
- - - - - APPROXIMATE RIVER



PRELIMINARY PLAT
NOT FOR RECORDATION,
CONVEYANCES OR SALES

Sheet 2 of 2

Re-Establishment of the Greenville County and Laurens County Boundary from the Saluda River Northeast to the Enoree River GREENVILLE COUNTY, S.C. LAURENS COUNTY, S.C.

SURVEY FOR:
SOUTH CAROLINA GEODETIC SURVEY
5 GEOLOGY ROAD
COLUMBIA, SC 29212

DATE: 03-26-2018 COMPUTED BY: RAP
SCALE: 1" = 4000' DRAWN BY: RAP
JOB NO.: 150109.000 CHECKED BY: FAR
ACAD FILE: SCgrid2011.dwg

SCALE IN FEET
0 4000 8000 12000

CESI LAND DEVELOPMENT SERVICES
45 SPRING STREET SW CONCORD (704) 786-5404
CONCORD, NC 28025 FAX (704) 786-7454

© CESI 2018 S.C. CERTIFICATE OF AUTHORIZATION NO. C00591

SHEET 2
SHEET 1