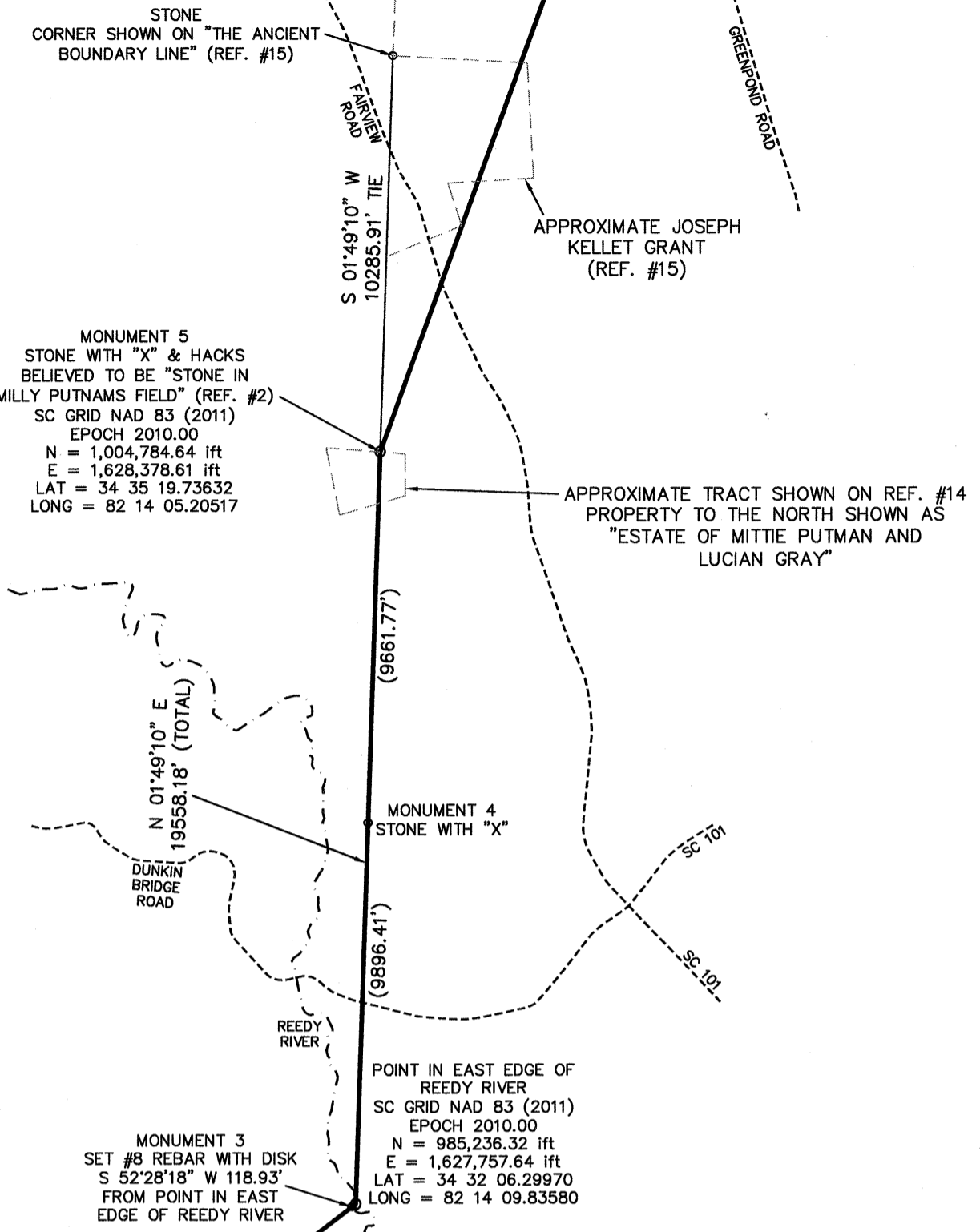
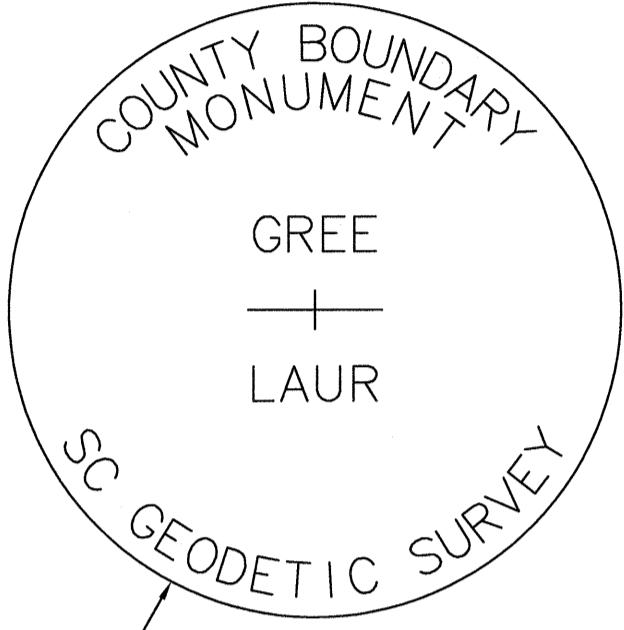
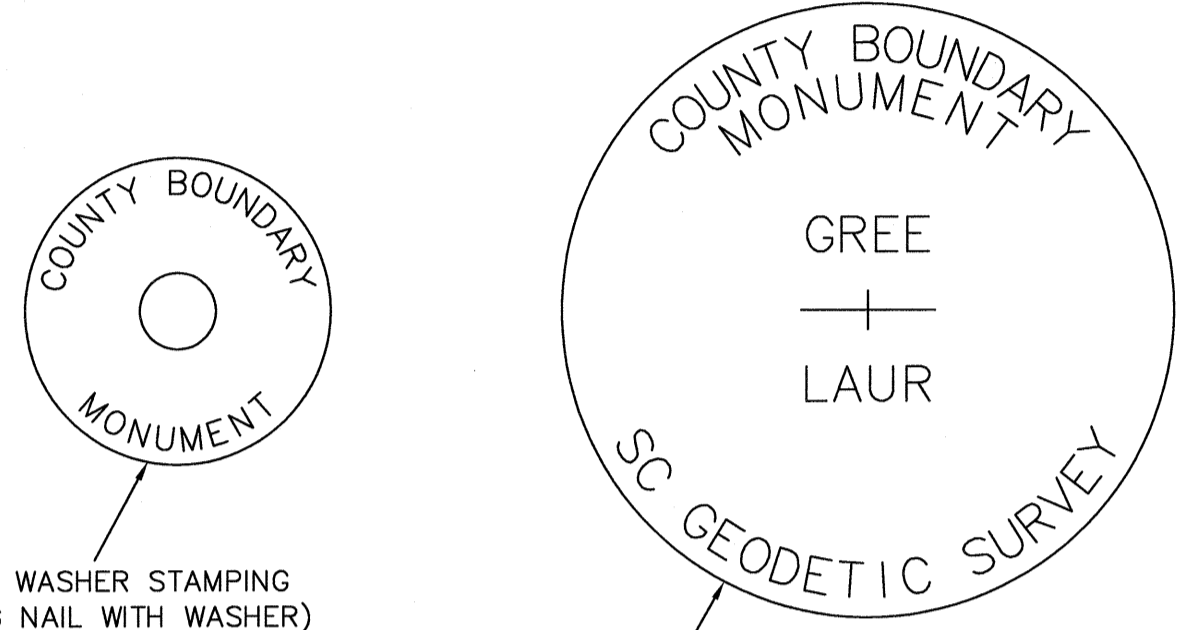
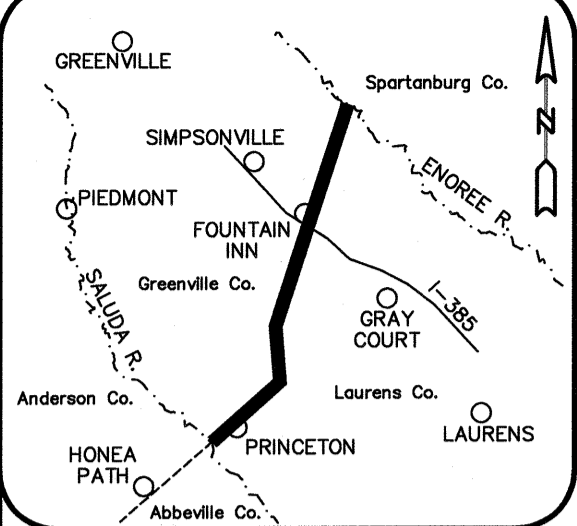


MATCH  
LINE

SHEET 2  
SHEET 1

BASIS OF BEARING  
SC GRID NAD 83 (2011)  
EPOCH 2010.00



LEGEND

- SOLID LINE: COUNTY LINE AS SURVEYED
- DASHED LINE: TIE LINE
- DOTTED LINE: APPROXIMATE ROAD
- DASHED LINE: APPROXIMATE RIVER

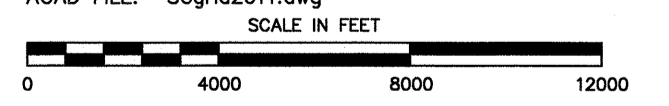
Sheet 1 of 2

Re-Establishment of the Greenville County and Laurens County Boundary from the Saluda River Northeast to the Enoree River  
GREENVILLE COUNTY, S.C.  
LAURENS COUNTY, S.C.

SURVEY FOR:  
SOUTH CAROLINA GEODETIC SURVEY  
5 GEOLOGY ROAD  
COLUMBIA, SC 29212

DATE: 04-29-2019  
SCALE: 1" = 4000'  
JOB NO.: 150109.000  
ACAD FILE: SCgrid2011.dwg

COMPUTED BY: RAP  
DRAWN BY: RAP  
CHECKED BY: FAR

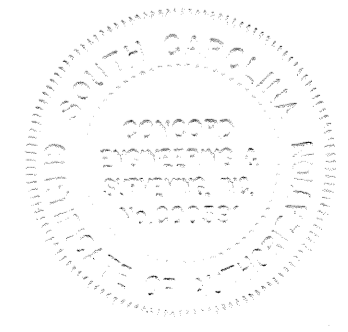


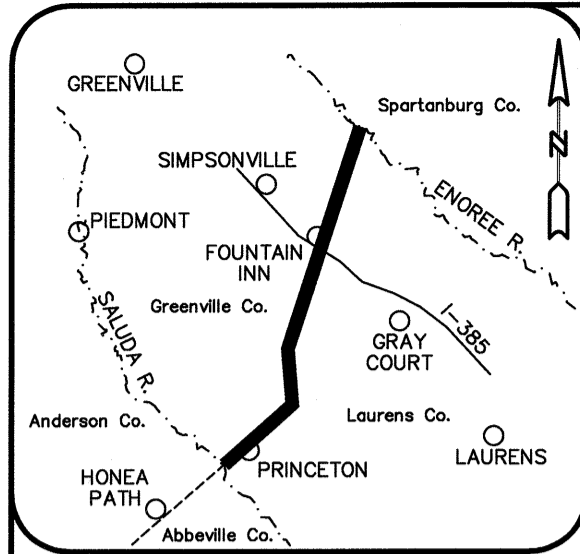
LAND DEVELOPMENT SERVICES  
45 SPRING STREET SW CONCORD (704) 786-5404  
CONCORD, NC 28025 FAX (704) 786-7454  
S.C. CERTIFICATE OF AUTHORIZATION NO. C00591

I, R. ANDREW PLETCHER, HEREBY STATE THAT TO THE BEST OF MY PROFESSIONAL KNOWLEDGE, INFORMATION, AND BELIEF, THE SURVEY SHOWN HEREON WAS MADE IN ACCORDANCE WITH THE REQUIREMENTS OF THE STANDARDS OF PRACTICE MANUAL FOR SURVEYING IN SOUTH CAROLINA, AND MEETS OR EXCEEDS THE REQUIREMENTS FOR A CLASS A SURVEY AS SPECIFIED THEREIN.

*R. Andrew Pletcher*

PROFESSIONAL LAND SURVEYOR LICENSE NO. 22760





VICINITY MAP  
NOT TO SCALE

REFERENCES:

- MAP SHOWING THE "BOUNDARY LINE BETWEEN THE PROVINCE OF SOUTH CAROLINA AND THE CHEROKEE INDIAN COUNTRY"; DATED MAY 8, 1766.
- "MAP OF FAIRVIEW COUNTY SOUTH CAROLINA" BY WM. H. YELDELL and W. H. NEWELL; SURVEYED 1906.
- MAP OF "LAURENS DISTRICT, SOUTH CAROLINA"; SURVEYED BY HENRY GRAY, 1820; IMPROVED FOR MILLS' ATLAS, 1825.
- MAP OF "GREENVILLE DISTRICT, SOUTH CAROLINA"; SURVEYED BY GEORGE SALMON, 1820; IMPROVED FOR MILLS' ATLAS, 1825.
- "MAP OF PROPOSED NEW COUNTY OUT OF PORTIONS OF SPARTANBURG AND LAURENS" BY THEOD. C. HAMBY AND WILLIAM MARTIN; SURVEYED MAY 1913.
- "MAP OF HIGHLAND COUNTY SOUTH CAROLINA" BY WM. H. YELDELL and W. H. NEWELL; SURVEYED 1907.
- "FULL DESCRIPTIVE MAP AND SKETCH OF GREENVILLE CO." BY PAUL B. KYZER; DATED 1882.
- "A COMPLETE MAP AND SKETCH OF LAURENS COUNTY S.C." BY KYZER & HELLAMS; DATED 1883.
- "AN ACCURATE MAP OF NORTH AND SOUTH CAROLINA WITH THEIR INDIAN FRONTIERS" BY HENRY MOUZON AND OTHERS; PUBLISHED MAY 30, 1775.
- "AN ACT TO ALTER THE LINE OF DIVISION BETWEEN THE COUNTIES OF LAURENS AND GREENVILLE"; DATED DECEMBER 21, 1792.
- CODE OF LAWS OF SOUTH CAROLINA 1976; VOLUME 1A; 4-3-280 AND 4-3-350.
- MAP TITLED "PROPERTIES OF M.P. SENN EST. AND SALLIE T. SENN EST." BY W.N. WILLIS; DATED MAR. 14, 1964; GREENVILLE PLAT BOOK GGG, PGS. 86 & 87.
- GREENVILLE DEED BOOK GGG, PG. 435; DATED JANUARY 17, 1896.
- GREENVILLE PLAT BOOK R, PG. 57B; DATED FEBRUARY 7, 1913.
- GREENVILLE LAND GRANT BOOK A, PAGE 295; SURVEYED JAN. 3, 1785.
- GREENVILLE DEED BOOK RR, PGS. 756 TO 773; DATED APRIL 27, 1886.
- GREENVILLE DEED BOOK KK, PG. 121; DATED DEC. 28, 1860.
- MAP TITLED "MAP NO. 4 A. R. HUNTER EST." BY W.J. RIDDLE; DATED AUG. 1947; GREENVILLE PLAT BOOK S, PG. 25.
- ZADOCK FORD LAND GRANT; SURVEYED JUNE 18, 1784.
- MAP TITLED "AS-BUILT SURVEY FOR VICELLON, INC." BY FREELAND & ASSOCIATES, INC.; LAST REVISED DECEMBER 27, 2002; GREENVILLE PLAT BOOK 48F, PG. 52.
- MAP TITLED "SURVEY FOR JAMES E. CASHION, JR." BY C. O. RIDDLE SURVEYING CO., INC.; DATED AUG. 31, 1992; GREENVILLE PLAT BOOK 23C, PG. 100.
- MAP TITLED "SURVEY FOR FRANK L. WILLIAMS" BY JOHN WOODS; DATED MAY 8, 1991; GREENVILLE PLAT BOOK 20R, PAGE 76.
- MAP TITLED "JOINT SURVEY OF PROPOSED CHANGE IN GREENVILLE-LAURENS COUNTY LINE" BY THE HARWOOD BEEBE COMPANY; DATED NOVEMBER 1929.

NOTES:

- TRAVERSES ADJUSTED BY THE LEAST SQUARES ADJUSTMENT METHOD.
- ALL DISTANCES ARE HORIZONTAL GRID DISTANCES.
- SC GRID NAD 83 (2011) EPOCH 2010.00 BASIS OF BEARING DERIVED FROM SCGS NETWORK RTK (HORIZONTAL POSITIONAL ACCURACY = 0.07') USING GEOID MODEL GEOID12B. UNITS ARE INTERNATIONAL FEET.

MATCH  
LINE

APPROXIMATE 1767  
CHEROKEE NATION LINE

FAIRVIEW  
CHURCH  
ROAD

GREENVILLE CO., SC

LAURENS CO., SC

MONUMENT 9  
SET MAG NAIL WITH WASHER 2" BELOW ASPHALT SURFACE  
AT LOCATION OF EXISTING NAIL STEM IN SCUFFLETOWN ROAD  
"N&C" SHOWN IN SCUFFLETOWN ROAD (REF. #22)  
"R O STUMP ON THE GREENVILLE ROAD" AT END  
OF CALL RUNNING WITH "THE LAURENS LINE" (REF. #17)  
SC GRID NAD 83 (2011)  
EPOCH 2010.00  
N = 1,055,012.20 ft  
E = 1,647,322.10 ft  
LAT = 34 43 38.72832  
LONG = 82 10 25.45287

MONUMENT 8  
SET #8 REBAR WITH DISK  
"18 MILE STONE AT THE  
INTERSECTION OF THE RAIL ROAD AND THE  
GREENVILLE COUNTY LINE" (REF. #16)  
SC GRID NAD 83 (2011)  
EPOCH 2010.00  
N = 1,040,058.03 ft  
E = 1,641,279.57 ft  
LAT = 34 41 10.11309  
LONG = 82 11 35.77349

MONUMENT 7  
1" PIPE  
53.88' FROM COMPUTED LOCATION OF "18 MILE STONE"  
"1PF 3" OT" (REF. #21)  
POINT ON LINE BETWEEN "STONE IN HOLLOW ON  
LAURENS LINE" AND "18 MILE STONE AT THE  
INTERSECTION OF THE RAIL ROAD AND THE  
GREENVILLE COUNTY LINE" (REF. #16)

MONUMENT 6  
1 1/2" FLAT BAR BESIDE 6" HIGH 2" PIPE (OUTSIDE DIA.)  
"OLD IRON" SHOWN ON GREENVILLE AND LAURENS  
COUNTY LINE (REF. #20)  
"STONE IN HOLLOW ON LAURENS LINE" (REF. #16)  
SC GRID NAD 83 (2011)  
EPOCH 2010.00  
N = 1,037,727.25 ft  
E = 1,640,349.05 ft  
LAT = 34 40 46.97259  
LONG = 82 11 46.59299

MONUMENT 10  
SET #8 REBAR WITH DISK  
57.16' FROM CENTERLINE  
OF ENOREE RIVER  
BELIEVED TO BE "PINE STUMP CORNER OF  
LAURENS AND GREENVILLE CO'S" (REF. #18)  
BELIEVED TO BE "TWO LARGE PINES" (REF. #2)

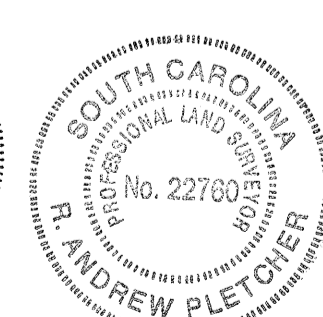
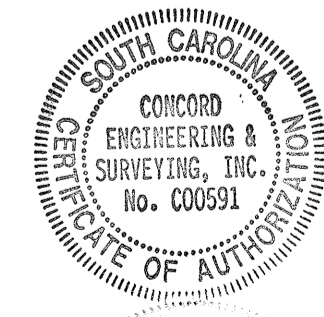
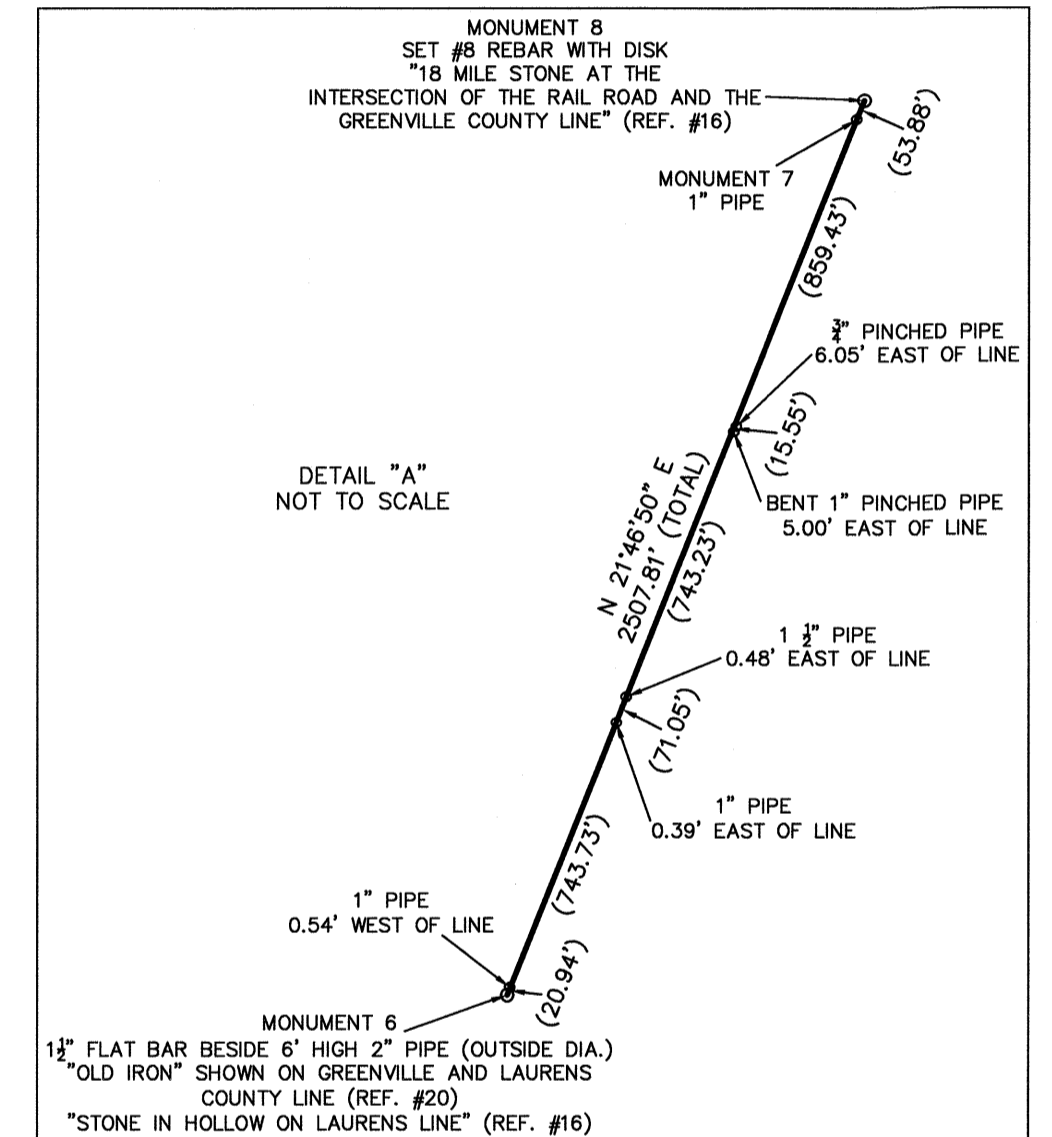
POINT IN CENTERLINE OF  
ENOREE RIVER  
SC GRID NAD 83 (2011)  
EPOCH 2010.00  
N = 1,075,946.42 ft  
E = 1,656,013.32 ft  
LAT = 34 47 06.74770  
LONG = 82 08 44.11166

LEGEND

- COUNTY LINE AS SURVEYED
- TIE LINE
- - - - - APPROXIMATE ROAD
- - - - - APPROXIMATE RIVER

SPARTANBURG CO., SC

BASIS OF BEARING  
SC GRID NAD 83 (2011)  
EPOCH 2010.00



04-29-2019

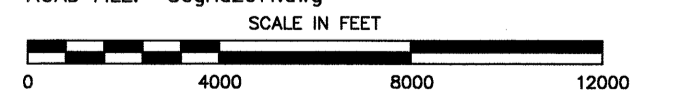
Sheet 2 of 2

Re-Establishment of the Greenville County and  
Laurens County Boundary from the Saluda River  
Northeast to the Enoree River  
GREENVILLE COUNTY, S.C.  
LAURENS COUNTY, S.C.

SURVEY FOR:  
SOUTH CAROLINA GEODETIC SURVEY  
5 GEOLOGY ROAD  
COLUMBIA, SC 29212

DATE: 04-29-2019  
SCALE: 1" = 4000'  
JOB NO.: 150109.000  
ACAD FILE: SCgrid2011.dwg

COMPUTED BY: RAP  
DRAWN BY: RAP  
CHECKED BY: FAR



LAND DEVELOPMENT SERVICES  
45 SPRING STREET SW CONCORD (704) 786-5404  
CONCORD, NC 28025 FAX (704) 786-7454

S.C. CERTIFICATE OF AUTHORIZATION NO. C00591

SHEET 2

SHEET 1