

INDEX OF SHEETS

- Sheet No. 1 Title Sheet
- " 1A Moving Item & Fence Sheet
- " 2-2A Typical Sections of Improvement
- " 3 Intersections Std.
- " 4 Superelevation "
- " 5 Traffic Control Devices
- \* " 5A Catch Basin Type 9 Std.
- " 6-9 Plan and Profile Rd. 40
- " 10-12 Plan and Profile Rd. 286
- " 13-15 Plan and Profile Rd. 300
- " 16-18 Plan and Profile Rd. 318
- " 19-21 Plan and Profile Rd. 319
- " 27A Bridge Std.
- " 28-36 Cross Sections Rd. 40
- " 37-41 Cross Sections Rd. 286
- " 42-48 Cross Sections Rd. 300
- " 49-53 Cross Sections Rd. 318
- " 54-73 Cross Sections Rd. 319
- \* " 5B State Federal Highway Construction Sign

SOUTH CAROLINA  
STATE HIGHWAY DEPARTMENT  
COLUMBIA

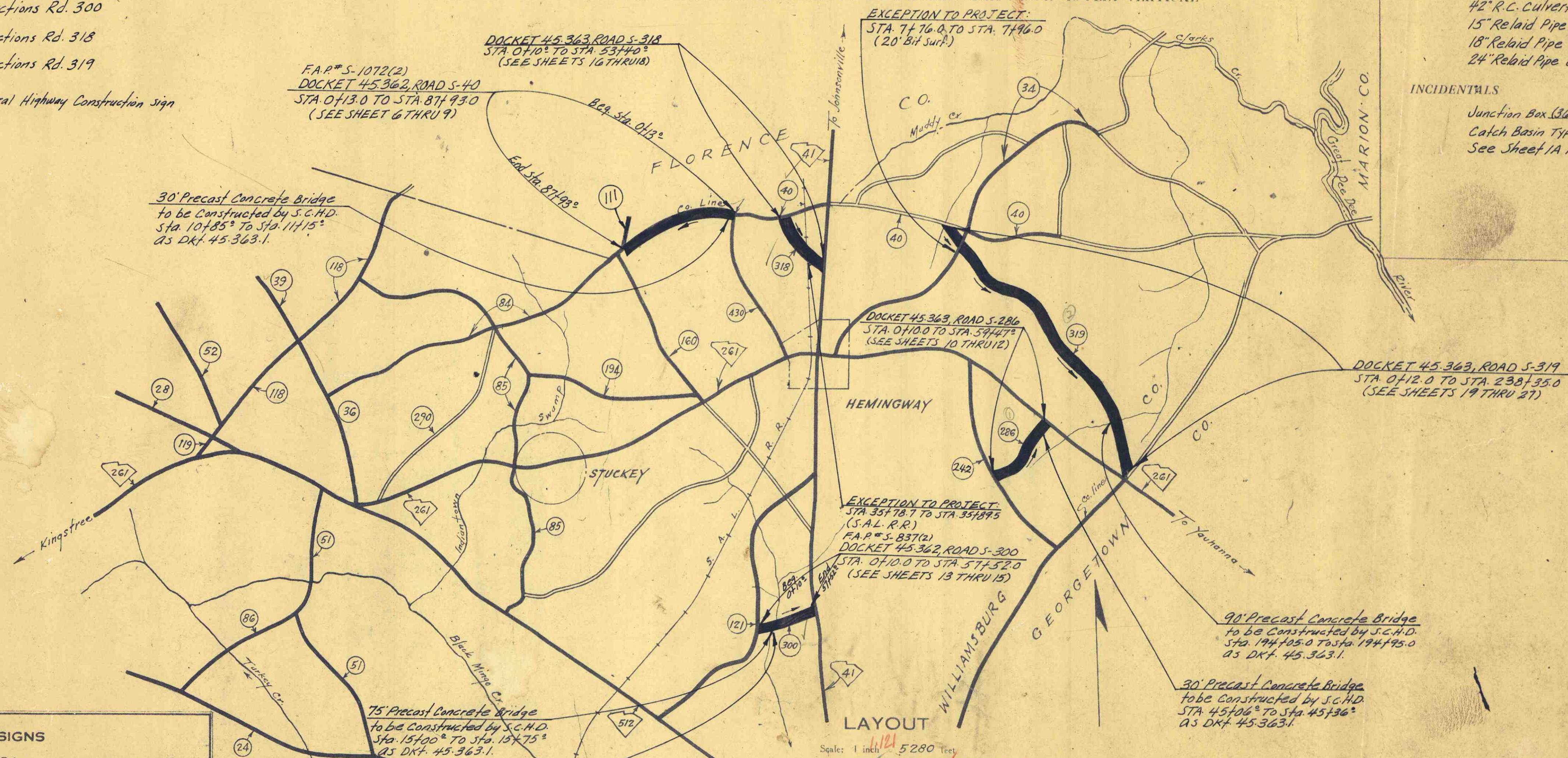
PLAN AND PROFILE OF PROPOSED  
STATE HIGHWAY

F.A.P.\*S-837(2), DKT. 45-362, RD. S-300, FROM RD. S-121 TO RTE. 41  
F.A.P.\*S-1072(2), DKT. 45-362, RD. S-40, FROM RD. S-430 TO RD. S-21-111

DKT. 45-363 { RD. S-286, FROM RD. S-242 TO RTE. 261  
RD. S-318, FROM RD. S-40 TO RTE. 41  
RD. S-319, FROM RD. S-40 TO RTE. 261

WILLIAMSBURG COUNTY

SCALE: PLAN AND PROFILE 1 INCH = 100 FEET HORIZONTAL 1 INCH = 10 FEET VERTICAL



30' Precast Concrete Bridge  
to be constructed by S.C.H.D.  
Sta. 101+85 to Sta. 114+15  
as DKT. 45-363-1.

F.A.P.\*S-1072(2)  
DOCKET 45-362, ROAD S-40  
STA. 0+13.0 TO STA. 81+93.0  
(SEE SHEET 6 THRU 9)

DOCKET 45-363, ROAD S-318  
STA. 0+10.0 TO STA. 53+40.0  
(SEE SHEETS 16 THRU 18)

EXCEPTION TO PROJECT:  
STA. 7+76.0 TO STA. 7+96.0  
(20' Bit Surf.)

DOCKET 45-363, ROAD S-286  
STA. 0+10.0 TO STA. 54+47.5  
(SEE SHEETS 10 THRU 12)

EXCEPTION TO PROJECT:  
STA. 35+78.7 TO STA. 35+89.5  
(S.A.L. R.R.)  
F.A.P.\*S-837(2)  
DOCKET 45-362, ROAD S-300  
STA. 0+10.0 TO STA. 57+52.0  
(SEE SHEETS 13 THRU 15)

DOCKET 45-363, ROAD S-319  
STA. 0+12.0 TO STA. 238+35.0  
(SEE SHEETS 19 THRU 21)

90' Precast Concrete Bridge  
to be constructed by S.C.H.D.  
Sta. 194+05.0 to Sta. 194+95.0  
as DKT. 45-363-1.

30' Precast Concrete Bridge  
to be constructed by S.C.H.D.  
Sta. 45+06.5 to Sta. 45+36.5  
as DKT. 45-363-1.

LAYOUT

Scale: 1 inch = 5280 Feet

	S-40	S-286	S-300	S-318	S-319
Net Length of Roadway	1.657	1.119	1.065	1.007	4.491
Net Length of Bridges	0.006	0.005	0.023	—	0.017
Net Length of Project	1.663	1.124	1.088	1.007	4.508
Length of Exceptions	—	—	—	0.002	0.004
Gross Length of Project	1.663	1.124	1.088	1.009	4.512

Equalities in Stationing: None

Handwritten calculations in red ink:  
 $4.491 + 0.017 = 4.508$   
 $4.508 + 0.002 = 4.510$   
 $4.510 + 0.002 = 4.512$

CONVENTIONAL SIGNS

State Line	Trolley Poles
County Line	Power Poles
City/Town Limits	Telephone or Telegraph Poles
Property Line	Marsh
Fence	Trees
Retaining Wall	Brush
Existing Road	Slumps
E and A.D.W. Lines of Proposed Road	Buildings
Railroad	Bridge
Levee or Embankment	Concrete Box Culvert
Guard Rail	Pipe Culvert
Point of Intersection (P.I.)	Drop Inlet and Culvert
	Hub on Center Line

LEGEND

PROPOSED PROJECT	PAY.	ER.
OTHER ROADS		

Note: All workmanship and material on this project to conform with South Carolina State Highway Department Standard Specifications for Highway Construction dated Nov. 1, 1955

REG. ROAD DIV. NO.	STATE	COUNTY	DOCKET NO.	F.A.P. PROJ. NO.	ROUTE NO.	SHEET NO.	TOTAL SHEETS
3	S.C.	Williamsburg	45-362 45-363	S-837(2) S-1072(2)	3-286 3-300 3-319	1	73

SUMMARY OF ESTIMATED QUANTITIES

	S-40	S-286	S-300	S-318	S-319	
<b>EARTHWORK</b>						
Clearing and Grubbing within Roadway	Nec.	Nec.	Nec.	Nec.	Nec.	
Clearing and Grubbing of Borrow and Material Pits	1.5	1.0	1.0	1.0	2.0	Acres
Unclassified Excavation	6,811	7,459	6,548	4,113	23,004	C.Y.
Overhaul	37,596	13,616	12,748	23,228	104,788	C.Y.H.M.
Selected Material for Shoulders	1,102	744	708	670	2,938	C.Y.
<b>BASE COURSE</b>						
Earth Type, Base Course (Pit Material)	4,424	3,032	2,833	2,736	12,028	C.Y.
Scarifying, Mixing, Remixing, Shaping and Reshaping	21,291	14,581	13,618	13,661	57,801	M.S.Y.
<b>SURFACING</b>						
Bituminous Surfacing (Double Treatment) Types 1 thru 6	20,319	13,925	12,993	13,070	55,169	S.Y.
<b>STRUCTURES</b>						
15" R.C. Culvert Pipe	196	144	284	184	536	L.F.
18" R.C. Culvert Pipe	408	452	164	256	572	L.F.
24" R.C. Culvert Pipe	52	104	—	24	324	L.F.
30" R.C. Culvert Pipe	40	—	—	40	60	L.F.
36" R.C. Culvert Pipe	—	—	—	—	72	L.F.
42" R.C. Culvert Pipe	—	—	40	—	40	L.F.
15" Relaid Pipe Culvert	40	21	—	50	83	L.F.
18" Relaid Pipe Culvert	—	52	—	27	173	L.F.
24" Relaid Pipe Culvert	40	80	—	57	148	L.F.
<b>INCIDENTALS</b>						
Junction Box (36" X 42")	—	—	—	—	1	Each
Catch Basin Type #9	—	—	—	—	1	Each
See Sheet 1A For Moving Items & Fences						

APPROVED:  
*W. A. Bealham* 3-14-62  
 STATE HIGHWAY ENGINEER DATE

DEPARTMENT OF COMMERCE  
 BUREAU OF PUBLIC ROADS

RECOMMENDED FOR APPROVAL:

DISTRICT ENGINEER DATE

APPROVED:

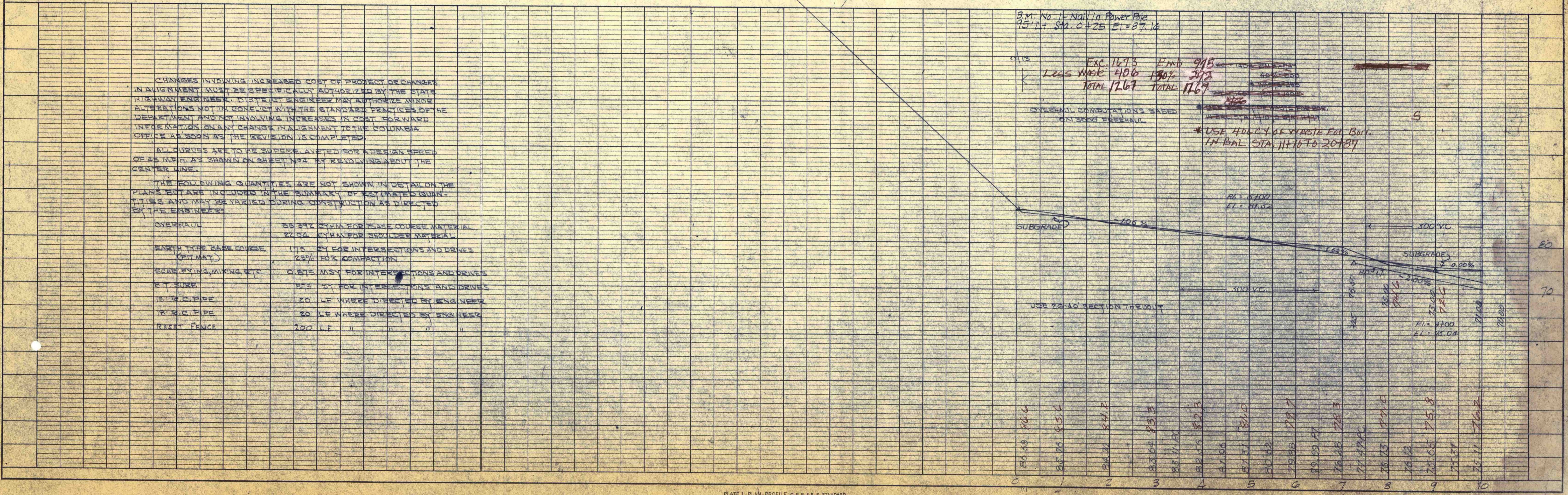
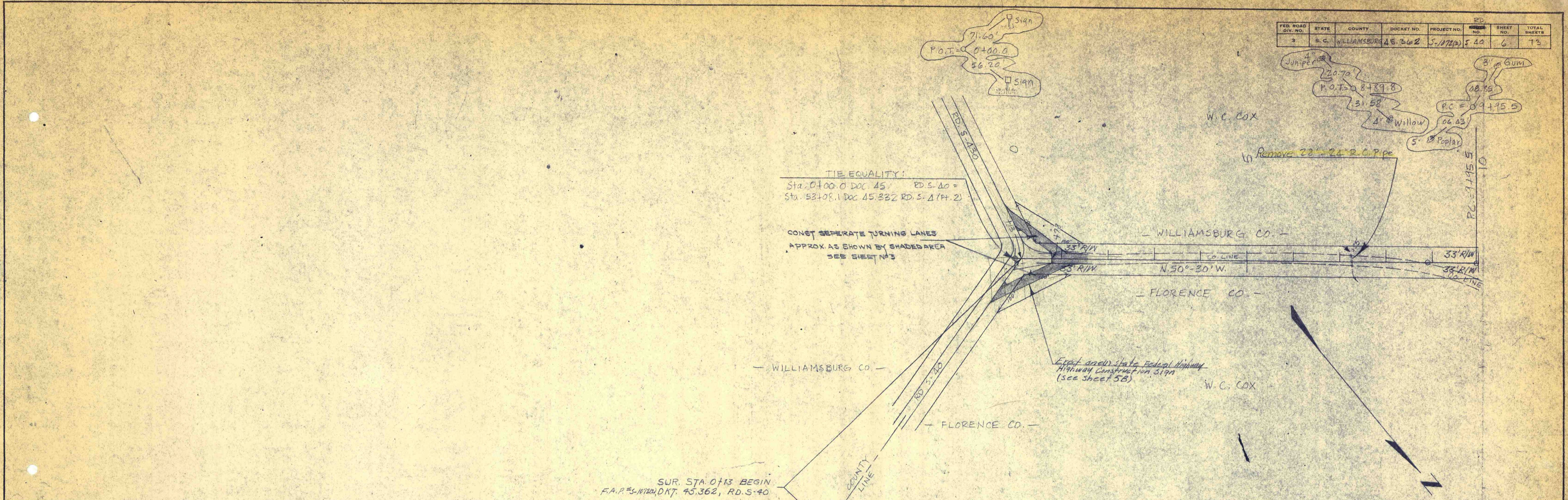
DIVISION ENGINEER DATE



FED. ROAD DIV. NO.	STATE	COUNTY	DOCKET NO.	PROJECT NO.	PD NO.	SHEET NO.	TOTAL SHEETS
3	S.C.	WILLIAMSBURG	45.362	5-178(a)	5-40	6	73

DATE	BY
SURVEYED	
ALIGNMENT CHECKED	
RT. OF WAY CHECKED	
NO.	
PLAN	

DATE	BY
SURVEYED	
GRADES CHECKED	
B.M. NOTED	
STRUCTURE NOTATIONS (OK/NO)	
PROFILE	



CHANGES INVOLVING INCREASED COST OF PROJECT OR CHANGES IN ALIGNMENT MUST BE SPECIFICALLY AUTHORIZED BY THE STATE HIGHWAY ENGINEER. DISTRICT ENGINEER MAY AUTHORIZE MINOR ALTERATIONS NOT IN CONFLICT WITH THE STANDARD PRACTICES OF THE DEPARTMENT AND NOT INVOLVING INCREASES IN COST. FORWARD INFORMATION ON ANY CHANGE IN ALIGNMENT TO THE COLUMBIA OFFICE AS SOON AS THE REVISION IS COMPLETED.

ALL CURVES ARE TO BE SUPERELEVATED FOR A DESIGN SPEED OF 45 MPH AS SHOWN ON SHEET NO. 4 BY REVOLVING ABOUT THE CENTER LINE.

THE FOLLOWING QUANTITIES ARE NOT SHOWN IN DETAIL ON THE PLANS BUT ARE INCLUDED IN THE SUMMARY OF ESTIMATED QUANTITIES AND MAY BE VARIED DURING CONSTRUCTION AS DIRECTED BY THE ENGINEER.

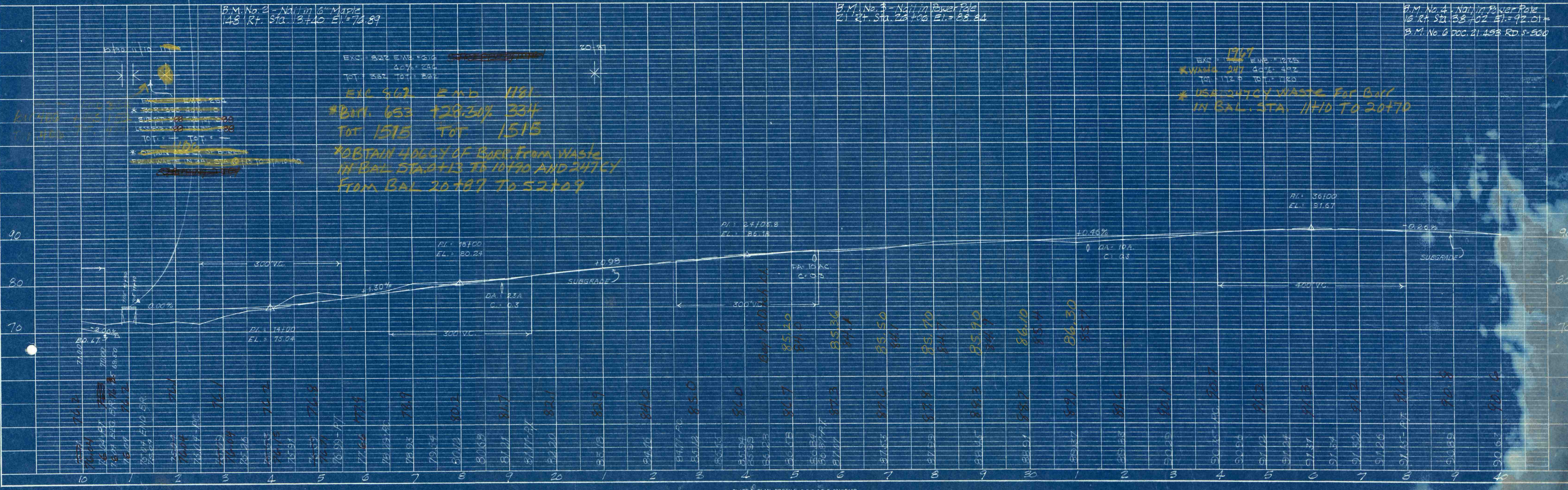
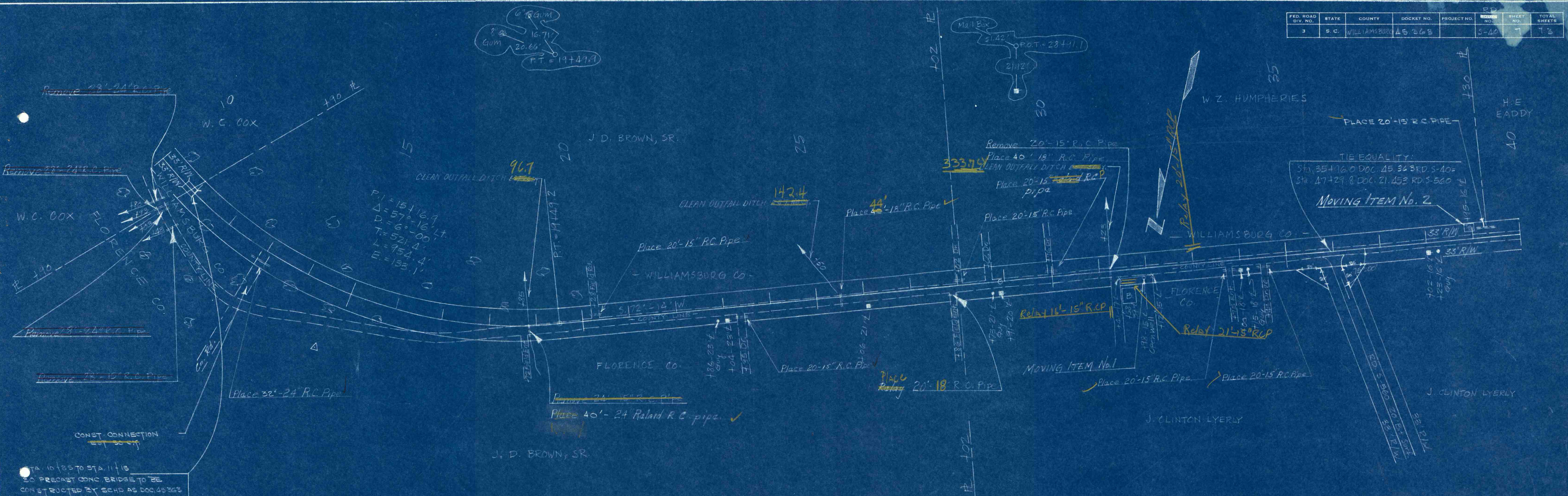
OVERHAUL	33 3/4 CYM FOR BASE COURSE MATERIAL
	22 1/2 CYM FOR REGULAR MATERIAL
EARTH TYPE BASE COURSE (FYMAT)	175 CY FOR INTERSECTIONS AND DRIVES
	25% FOR COMPACTION
SCAFFOLDING, MIXING, ETC.	0.615 MSY FOR INTERSECTIONS AND DRIVES
BITUMES	375 SY FOR INTERSECTIONS AND DRIVES
18" R.C. PIPE	20 LF WHERE DIRECTED BY ENGINEER
18" R.C. PIPE	20 LF WHERE DIRECTED BY ENGINEER
RESET FENCE	200 LF " " " "



FED. ROAD DIV. NO.	STATE	COUNTY	DOCKET NO.	PROJECT NO.	SHEET NO.	TOTAL SHEETS
3	S. C.	WILLIAMSBURG	45-363		5-40	73

PLAN	DATE	BY
SURVEYED PLOTTED NOTE BOOK NO.		
CHECKED BY		
DATE		

PROFILE	DATE	BY
SURVEYED PLOTTED NOTE BOOK NO.		
CHECKED BY		
DATE		





FED. ROAD DIV. NO.	STATE	COUNTY	DOCKET NO.	PROJECT NO.	REVISION NO.	SHEET NO.	TOTAL SHEETS
3	S. C.	Williamsburg	43-263		5-17	8	13

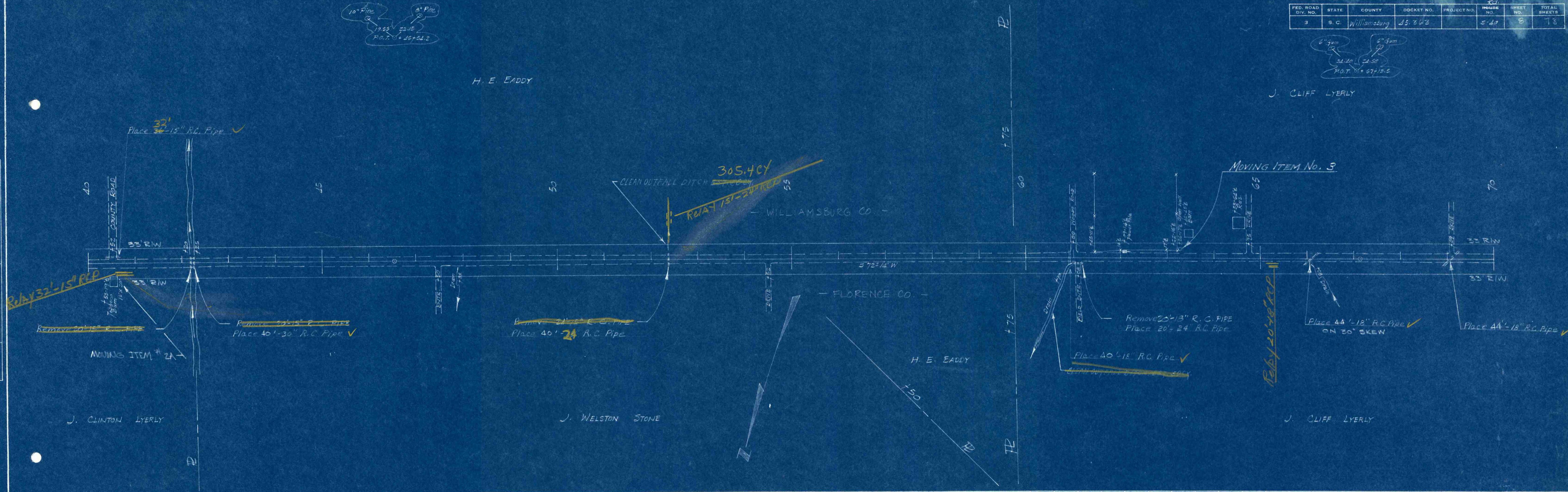
10" Pine  
 30  
 1955 23.15  
 P.O.T. = 10+24.2

6" gum  
 32.20 23.50  
 P.O.T. = 67+15.5

H. E. EADY

J. CLIFF LYERLY

PLAN  
 SURVEYED  
 PLOTTED  
 ALIGNMENT CHECKED  
 RT. OF WAY CHECKED  
 NO.



PROFILE  
 SURVEYED  
 PLOTTED  
 GRADES CHECKED  
 B. M. NOTED  
 STRUCTURE NOTATIONS CHECKED  
 NO.

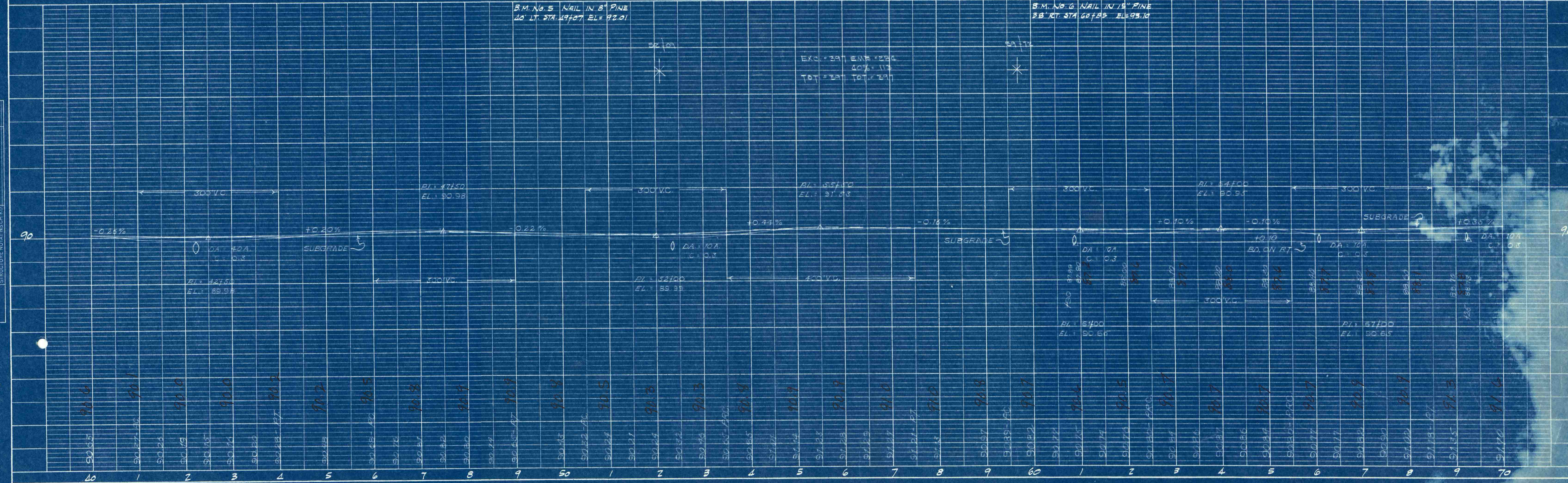


PLATE 1 - PLAN - PROFILE, O. P. R. & R. E. STANDARD

WILLIAMSBURG  
 5-20



FED. ROAD DIV. NO.	STATE	COUNTY	DOCKET NO.	PROJECT NO.	ROUTE NO.	SHEET NO.	TOTAL SHEETS
3	S.C.	Williamsburg	15-362	5-102(2)	5-40	9	73

PLAN  
 SURVEYED, PLOTTED, CHECKED, BY: DATE: [ ]  
 NOTE BOOK NO. [ ]

PROFILE  
 SURVEYED, PLOTTED, CHECKED, BY: DATE: [ ]  
 NOTE BOOK NO. [ ]

