

### INDEX OF SHEETS

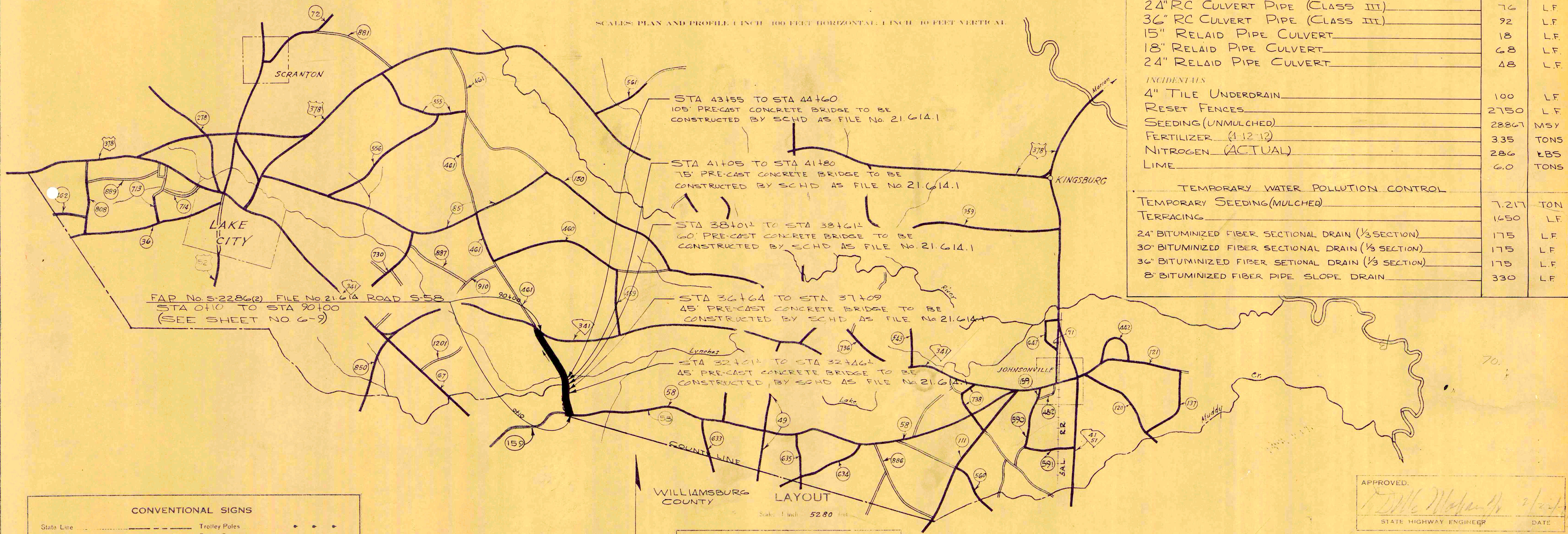
- 1 TITLE SHEET
- 2 TYPICAL SECTION
- 3 INTERSECTION STD.
- 4 SUPERELEVATION STD.
- 5 STATE-FEDERAL CONSTRUCTION SIGN
- 6-9 PLAN AND PROFILE
- 10 BRIDGE STD.
- 11-21 CROSS SECTIONS

## SOUTH CAROLINA STATE HIGHWAY DEPARTMENT COLUMBIA

# PLAN AND PROFILE OF PROPOSED STATE HIGHWAY

F.A.P. No. S-2286(2) FILE No. 21.614  
ROAD S-58  
FROM WILLIAMSBURG COUNTY LINE  
TO ROUTE 341  
FLORENCE COUNTY

SCALE: PLAN AND PROFILE 1 INCH = 100 FEET HORIZONTAL, 1 INCH = 10 FEET VERTICAL



SUMMARY OF ESTIMATED QUANTITIES		S-58	UNIT
<b>EARTHWORK</b>			
Clearing and Grubbing within RIGHT OF WAY	NEC		
Clearing and Grubbing of Borrow and Material Pits	2.0		ACRES
Unclassified Excavation	14,582		CY
Overhaul	42,862		CYHM
Selected Material for Shoulders	965		CY
<b>BASE COURSE</b>			
Earth Type Base Course (PIT MATERIAL)	4786		CY
Scarifying, Mixing, Remixing, Shaping and Reshaping	23,011		MSY
<b>SURFACING</b>			
Bituminous Surfacing (TRIPLE TREATMENT-TYPE 1-4)	22,049		SY
<b>STRUCTURES</b>			
15" RC CULVERT PIPE (CLASS III)	132		LF
18" RC CULVERT PIPE (CLASS III)	188		LF
24" RC CULVERT PIPE (CLASS III)	76		LF
36" RC CULVERT PIPE (CLASS III)	92		LF
15" RELAID PIPE CULVERT	18		LF
18" RELAID PIPE CULVERT	68		LF
24" RELAID PIPE CULVERT	48		LF
<b>INCIDENTALS</b>			
4" TILE UNDERDRAIN	100		LF
RESET FENCES	2750		LF
SEEDING (UNMULCHED)	28867		MSY
FERTILIZER (4-12-12)	335		TONS
NITROGEN (ACTUAL)	286		LBS
LIME	6.0		TONS
<b>TEMPORARY WATER POLLUTION CONTROL</b>			
TEMPORARY SEEDING (MULCHED)	7.217		TON
TERRACING	1650		LF
24" BITUMINIZED FIBER SECTIONAL DRAIN (1/3 SECTION)	175		LF
30" BITUMINIZED FIBER SECTIONAL DRAIN (1/3 SECTION)	175		LF
36" BITUMINIZED FIBER SECTIONAL DRAIN (1/3 SECTION)	175		LF
8" BITUMINIZED FIBER PIPE SLOPE DRAIN	330		LF

CONVENTIONAL SIGNS	
State Line	Trolley Poles
County Line	Power Poles
City or Town Limits	Telephone or Telegraph Poles
Property Line	Marsh
Fence	Trees
Retaining Wall	Brush
Existing Road	Stumps
Center and R.O.W. Lines of Proposed Road	Buildings
Railroad	Bridge
Levee or Embankment	Concrete Box Culvert
Guard Rail	Pipe Culvert
Point of Intersection (P.I.)	Drop Inlet and Culvert
	Hub on Center Line

LEGEND	
PROPOSED PROJECT	MAV
OTHER ROADS	ER

Net Length of Roadway	1.640	Miles
Net Length of Bridges	0.063	Miles
Net Length of Project	1.703	Miles
Length of Exceptions		Miles
Gross Length of Project	1.703	Miles

Equalities in Stations

APPROVED:  
*[Signature]*  
STATE HIGHWAY ENGINEER DATE

DEPARTMENT OF COMMERCE  
BUREAU OF PUBLIC ROADS

RECOMMENDED FOR APPROVAL

DISTRICT ENGINEER DATE

APPROVED:

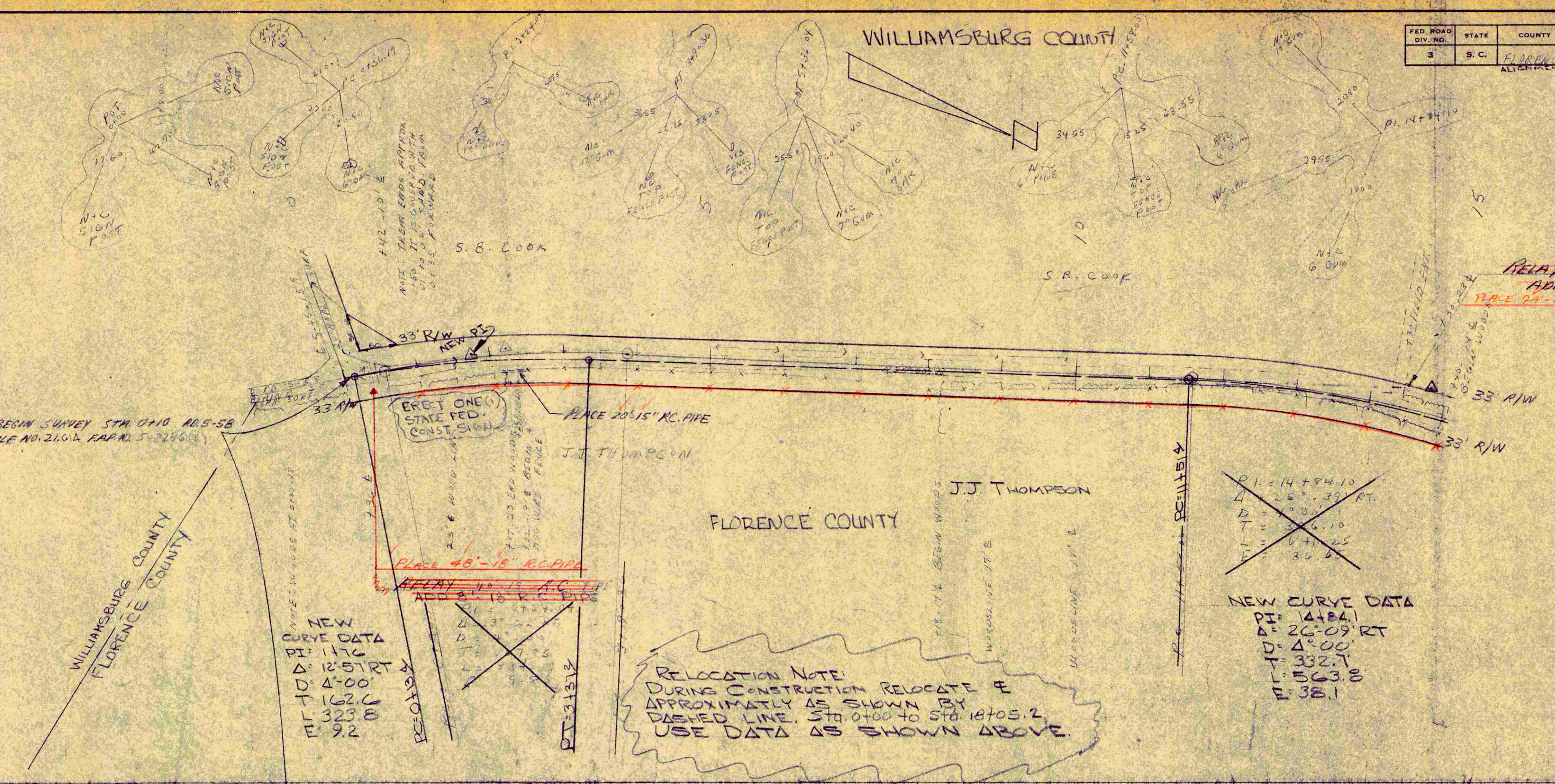
DIVISION ENGINEER DATE

Note: All workmanship and material on this project to conform with South Carolina State Highway Department Standard Specifications for Highway Construction dated 1964

W.L.E.

PLAN  
SURVEYED  
PLOTTED  
ALIGNMENT CHECKED  
RT. OF WAY CHECKED  
BY: *[Signature]*  
DATE: \_\_\_\_\_

PROFILE  
SURVEYED  
PLOTTED  
GRADES CHECKED  
E. M. NOTED  
BY: *[Signature]*  
DATE: \_\_\_\_\_

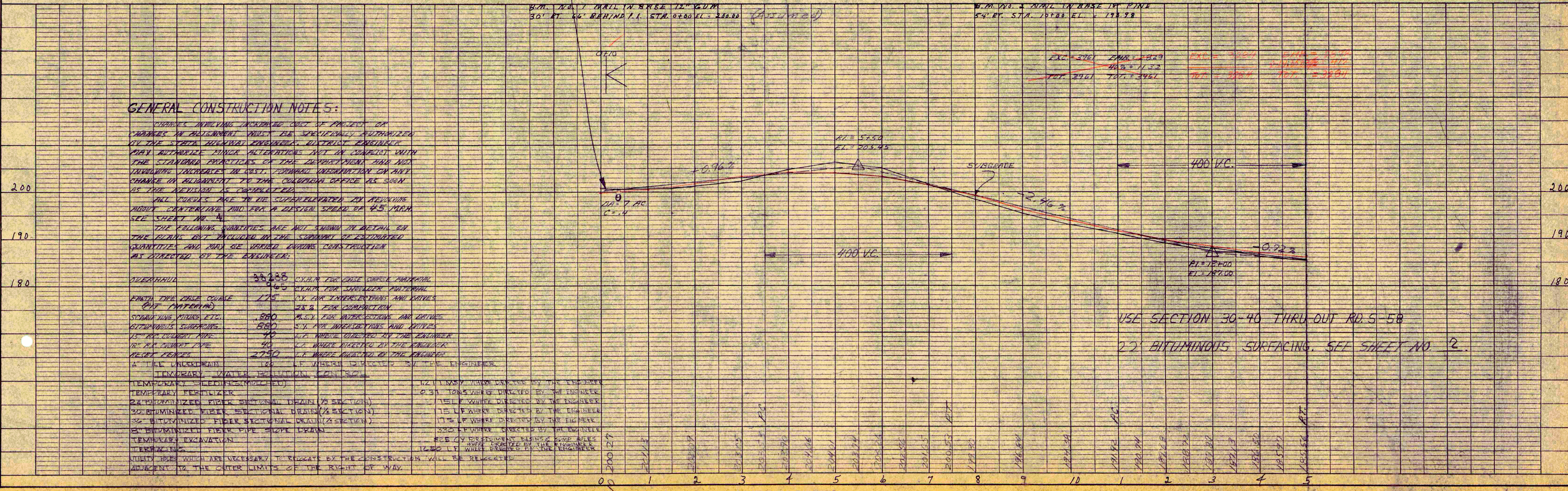


RELAY 18'-15" CONC. PIPE  
ADD 4'-15" P.C. PIPE  
PLACE 24'-15" P.C. PIPE

~~PI = 14+84.10  
Δ = 26'-39" RT  
D = 4'-00"  
T = 332.7  
L = 14+84.10  
E = 38.1~~

NEW CURVE DATA  
PI = 14+84.1  
Δ = 26'-09" RT  
D = 4'-00"  
T = 332.7  
L = 14+84.1  
E = 38.1

RELOCATION NOTE:  
DURING CONSTRUCTION RELOCATE E APPROXIMATELY AS SHOWN BY DASHED LINE. STA. 0+00 TO STA. 18+03.2. USE DATA AS SHOWN ABOVE.



Exc = 2961 Emb = 2823  
400 = 1132  
Tot = 2961 Tot = 2801

GENERAL CONSTRUCTION NOTES:

CHANGES INVOLVING INCREASED COST OF PROJECT OR CHANGES IN REQUIREMENT MUST BE SPECIALLY AUTHORIZED BY THE STATE HIGHWAY ENGINEER, DISTRICT ENGINEER. MAY AUTHORIZE MINOR ALTERATIONS NOT IN CONFLICT WITH THE STANDARD PRACTICES OF THE DEPARTMENT AND NOT INVOLVING INCREASES IN COST. FORWARD INFORMATION ON ANY CHANGE IN ALIGNMENT TO THE COUNTY OFFICE AS SOON AS THE REVISION IS COMPLETED.

ALL CURVES ARE TO BE SUPERELEVATED BY AN AVERAGE ROADWAY CENTERLINE AND FOR A DESIGN SPEED OF 45 MPH. SEE SHEET NO. 1.

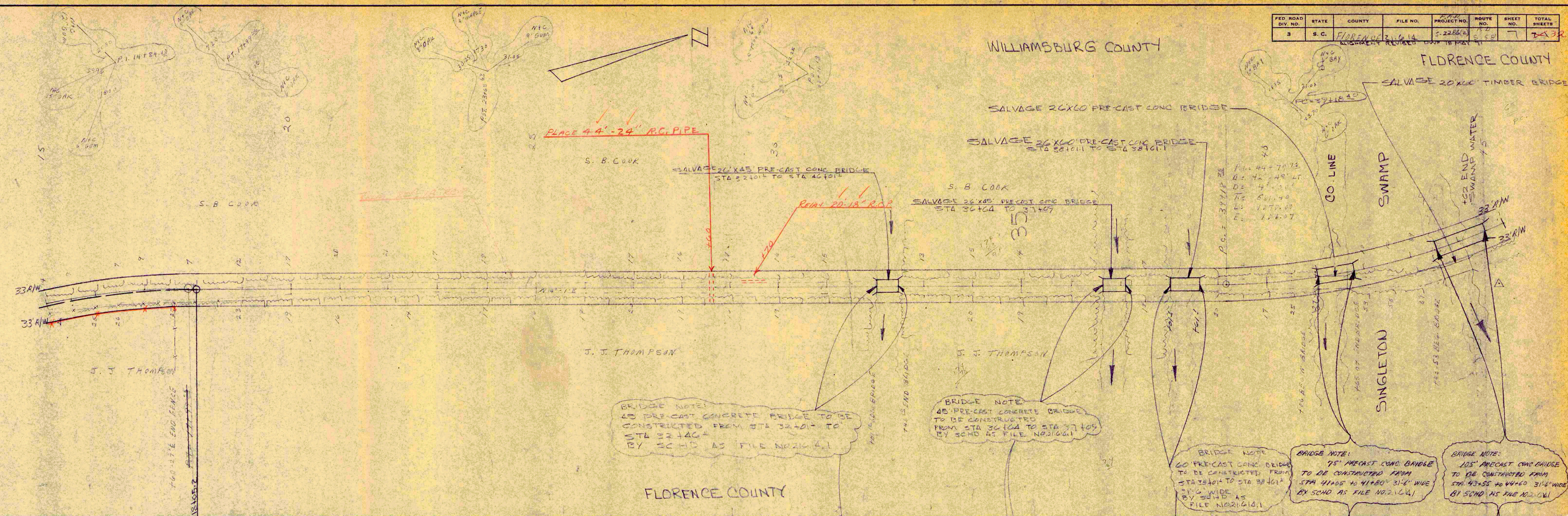
THE FOLLOWING QUANTITIES ARE NOT SHOWN IN DETAIL ON THE PLANS BUT INCLUDED IN THE SUMMARY OF ESTIMATED QUANTITIES AND MAY BE VARIOUS DURING CONSTRUCTION AS DIRECTED BY THE ENGINEER:

OVERHAUL	38238	CY. FOR CURSE CROSS CHANNEL	12.1 MSH WHERE DIRECTED BY THE ENGINEER
ERECT ONE STATE SIGN	175	CY. FOR INTERSECTIONS AND DRIVES	0.57 TONS WHERE DIRECTED BY THE ENGINEER
SPREADING MIXTURE, ETC.	580	AS B. FOR SUPERELEVATION	15 LF WHERE DIRECTED BY THE ENGINEER
BITUMINOUS SURFACING	580	S.Y. FOR INTERSECTIONS AND DRIVES	17.5 LF WHERE DIRECTED BY THE ENGINEER
15" R.P. CONCRETE PIPE	40	S.Y. FOR INTERSECTIONS AND DRIVES	335 LF WHERE DIRECTED BY THE ENGINEER
18" R.P. CONCRETE PIPE	40	CY. WHERE DIRECTED BY THE ENGINEER	
RECEP. LINES	2750	LF WHERE DIRECTED BY THE ENGINEER	
A TEE UNDERDRAIN	160	LF WHERE DIRECTED BY THE ENGINEER	
TEMPORARY WATER DIVERSION CONSOLE			
TEMPORARY SEEDING (MIXED)			
TEMPORARY FERTILIZER			
24" BITUMINOZED FIBER SECTIONAL DRAIN (1/2 SECTION)			
30" BITUMINOZED FIBER SECTIONAL DRAIN (1/2 SECTION)			
36" BITUMINOZED FIBER SECTIONAL DRAIN (1/2 SECTION)			
42" BITUMINOZED FIBER PIPE SLOPE DRAIN			
TEMPORARY EXCAVATION			
TEMPORARY FENCING			
MUNITY SIGNS WHICH ARE NECESSARY TO BE PLACED BY THE CONSTRUCTION WILL BE REPAIRED ADJACENT TO THE OUTER LIMITS OF THE RIGHT OF WAY.			

USE SECTION 30-40 THRU OUT RD. 5-58  
22" BITUMINOUS SURFACING. SEE SHEET NO. 2

WILLIAMSBURG COUNTY

FLORENCE COUNTY



PLAN  
 SURVEYED, PLOTTED, CHECKED, BY: J.E.W.  
 NOTE BOOK NO. OF WAY CHECKED

PROFILE  
 SURVEYED, PLOTTED, CHECKED, BY: J.E.W.  
 NOTE BOOK NO. STRUCTURE NOTATION: NSCH.KO

