

INDEX OF SHEETS

- SHEET No. 1 TITLE PAGE
- " " 2 TYPICAL CROSS SECTION OF IMPROVEMENT
- " " 3 ENDWALLS FOR PIPE CULVERTS
- 4 GUARD RAIL
- 5 FEDERAL AID MARKERS
- 6-26 PLAN AND PROFILE STA. 19+40 TO 518+13.4
- 27 4x4 REINF. CONC. BOX CULVERT STA. 21+65
- 28 4x4 " " " " " " 31+90-236+00
- 29 4x6 " " " " " " 51+00
- 30 8-22 FT SPAN REINF. CONC. BRIDGE STA. 61+69
- 31 6x6 REINF. CONC. BOX CULVERT STA. 99+12-399+50
- 32 5x5 " " " " " " 165+90
- 33 7x7 " " " " " " 381+85
- 34-72 CROSS SECTIONS STA. 19+40 TO 518+13.4
- 32A 4'x4'x28' REINF. BOX CULVERT-236+00

STATE OF SOUTH CAROLINA STATE HIGHWAY DEPARTMENT

PLAN AND PROFILE OF PROPOSED STATE HIGHWAY

FEDERAL AID PROJECT

No. 258-D-REOP-SEC. 2

ROUTE NO. 19

SALUDA COUNTY

FROM SALUDA TO EDGEFIELD COUNTY LINE NEAR JOHNSTON

SCALES: PLAN AND PROFILE, 1 INCH = 100 FEET HORIZONTAL; 1 INCH = 10 FEET VERTICAL.

INDEX OF SHEETS, F.A. PROJ. NO. 258-D-REOP-SEC. 2

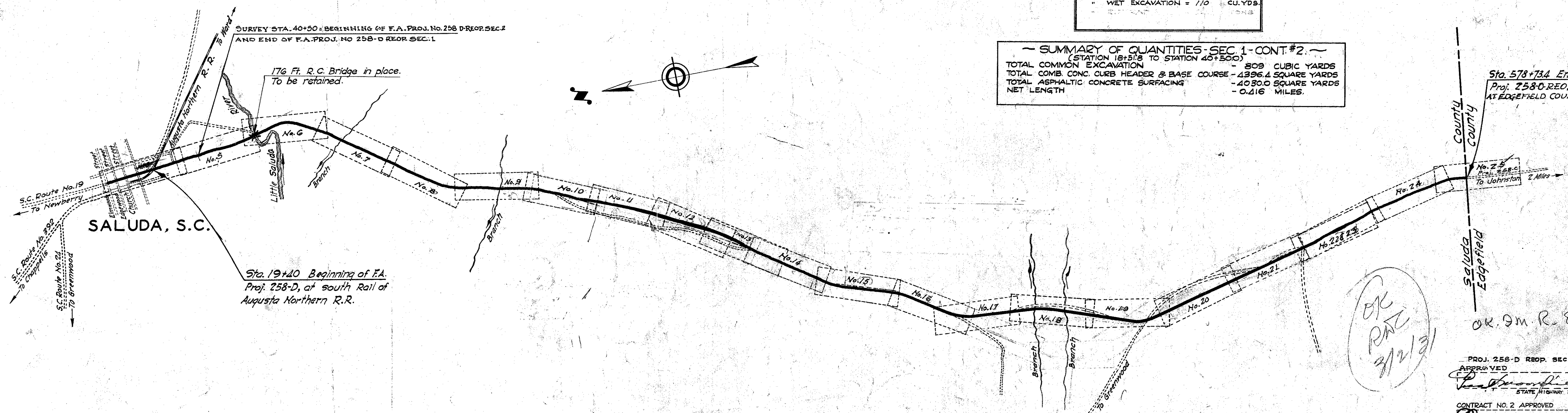
- SHEET No. 1 TITLE PAGE
- " " 2 TYPICAL CROSS SECTION OF IMPROVEMENT
- " " 3 ENDWALL FOR PIPE CULVERTS
- " " 4 TYPICAL SUPERELEVATION
- " " 5-28 PLAN AND PROFILE STA. 40+50 TO STA. 518+13.4

SUMMARY OF ESTIMATED QUANTITIES												
STATION	SHEET NO.	ITEM	CONCRETE (CUBIC YARDS)			REINFORCING STEEL (LBS.)	EXCAVATION (CU. YDS.)		PAVING (SQ. YDS.)	ROCK EXCAVATION (CU. YDS.)	RIP RAP (TONS)	Excava. for Structures
			CLASS "A"	CLASS "B"	CLASS "C"		WET	DRY				
21+65	3	ENDWALLS FOR PIPE CULVERTS	80.34			2535						
31+90	6-27	4'x4'x28' REINF. CONC. BOX CULVERT	20.7			1531						40
51+00	7-28	4'x4'x28' " " " "	23.8			2091						70
61+72	8-30	8-22 SPAN CONC. BRIDGE (SEE BELOW)	19.95			1643						170
99+12	9-31	6'x6'x28' REINF. CONC. BOX CULVERT	34.2			2295						45
165+90	11-32	5'x5'x28' " " " "	28.5			2018						45
236+00	13-32A	4'x4'x28' " " " "	17.3			1250						30
381+85	19-33	7'x7'x38' " " " "	51.5			4235						59
399+50	19-31	6'x6'x28' " " " "	34.2			2295						57
TOTAL PIPE FOR CULVERTS			232.75	80.34		17623						356
TOTAL CLEARING & GRUBBING ON PITS						200 ACRES						
TOTAL GUARD RAIL (LOW WOOD)						1128 LINEAR FEET						
TOTAL OVERHAUL ON EXCAVATION						68,249 CUBIC YARDS						
TOTAL EXCAVATION (COMMON)						29,342.5 CUBIC YARDS						
TOTAL TOP SOIL SURFACING (COMPACTED)+10%						32,631 CUBIC YARDS						
TOTAL CLEARING & GRUBBING WITHIN R/W						5,000 ACRES						
TOTAL OVERHAUL ON SURFACING						12,500 CUBIC YARDS						
TOTAL ROCK EXCAVATION						10,500 CUBIC YARDS						
TOTAL FEDERAL AID MARKERS						2 ONLY						

SUMMARY OF QUANTITIES FOR CONC. BRIDGE STA. 61+72 TO BE BUILT UNDER SEPARATE CONTRACT			
TOTAL CLASS "A" CONC.	=	288.34	CU. YDS.
REINFORCING STEEL	=	5,187	POUNDS
ASPHALT PAVING	=	350	SQ. YDS.
ROCK EXCAVATION	=	55	CU. YDS.
DRY EXCAVATION	=	100	CU. YDS.
WET EXCAVATION	=	110	CU. YDS.

*Note: Does not include Rock, but includes 1430 cu yds. Ditch excavation.
** Includes 10% as an allowance for any extra top soil necessary.
Note: Yardage and Surfacing omitted for Bridge to be built under separate cont.

SUMMARY OF QUANTITIES - SEC 1-CONT.#2 (STATION 18+51.8 TO STATION 40+50.0)	
TOTAL COMMON EXCAVATION	= 809 CUBIC YARDS
TOTAL COMB. CONC. CURB HEADER & BASE COURSE	= 4396.4 SQUARE YARDS
TOTAL ASPHALTIC CONCRETE SURFACING	= 4030.0 SQUARE YARDS
NET LENGTH	= 0.416 MILES.



CONVENTIONAL SIGNS	
State Line	Trolley Poles
County Line	Power Poles
City or Town Limits	Telephone or Telegraph Poles
Property Line	Marsh
Fence	Trees
Retaining Wall	Brush
Existing Road	Stumps
℄ and R.O.W. Lines of Proposed Road	Buildings
Railroad	Bridge
Levee or Embankment	Concrete Box Culvert
Guard Rail	Pipe Culvert
Point of Intersection (P. I.)	Drop Inlet and Culvert
	Hub on Center Line

LEGEND	
PROPOSED PROJECT	—
OTHER ROADS	---

LAYOUT	
Scale: 1 inch = 2,000 feet	
Gross Length of Project	= 10.454 Miles
Exceptions	= 0.000 Miles
Net Length of Project	= 10.454 Miles

Equalities in Stationing
 Sta. 336+30.8 = Sta. 335+52.5
 Sta. 506+32.5 = Sta. 514+00.0
 Sta. 272+19.9 = Sta. 272+62.9

Note: All workmanship and material on this project to conform with South Carolina State Highway Department Specifications, Contract and Bond; for Roads and Culverts, revised Aug. 1, 1933 and for Bridges, revised May 1st, 1935 as amended and approved by the U. S. Secretary of Agriculture.

SUMMARY OF ESTIMATED QUANTITIES, F.A. PROJ. NO. 258-D REOP SEC. 2	
TOTAL PIPE FOR CULVERTS	232.75
TOTAL CLEARING AND GRUBBING ON PITS	= 200 ACRES
TOTAL COMMON EXCAVATION	= 115,002.2 CUBIC YARDS
TOTAL BITUMINOUS SURFACING	= 117,000.2 SQUARE YARDS
TOTAL TOP SOIL SURFACING	= 32,631 CUBIC YARDS
TOTAL OVERHAUL ON TOP SOIL	= 35,200 CU. YD. STA.
TOTAL OVERHAUL ON TOP SOIL	= 30,000 CU. YD. H. MILES
TOTAL GUARD RAIL TO BE RESET	= 1,136 LINEAR FEET
TOTAL CLASS "B" CONCRETE	= 132 CUBIC YARDS
TOTAL SCARIFYING, SHAPING AND RESHAPING	= 52,300 M. L.I.N. FEET
TOTAL ROCK EXCAVATION WITHIN R/W	= 10,500 CUBIC YARDS
TOTAL CLEARING & GRUBBING WITHIN R/W	= 5,000 ACRES
*ESTIMATED AT 40 CU. YDS. PER STATION. NECESSARY.	

GROSS LENGTH OF PROJECT = 10.055 MILES	
EXCEPTIONS	= 0.000 MILES
NET LENGTH OF PROJECT	= 10.055 MILES

PROJ. 258-D REOP. SEC. 2	DATE
APPROVED	8-17-31
STATE HIGHWAY ENGINEER	
CONTRACT NO. 2 APPROVED	DATE
APPROVED	11-9-27
STATE HIGHWAY ENGINEER	
RELOCATION APPROVED	DATE
APPROVED	11-9-27
STATE HIGHWAY ENGINEER	
APPROVED	DATE
APPROVED	7-18-27
STATE HIGHWAY ENGINEER	
RECOMMENDED FOR APPROVAL	DATE
RECOMMENDED FOR APPROVAL	DATE
CHIEF ENGINEER - BUREAU OF PUBLIC ROADS	
APPROVAL	DATE
DIRECTOR - BUREAU OF PUBLIC ROADS	

FED. ROAD DIST. NO.	STATE	COUNTY	FA. PROJ. NO.	ROUTE NO.	SHEET NO.	TOTAL SHEETS
8	S.C.	SALUDA	258D	19	23	23

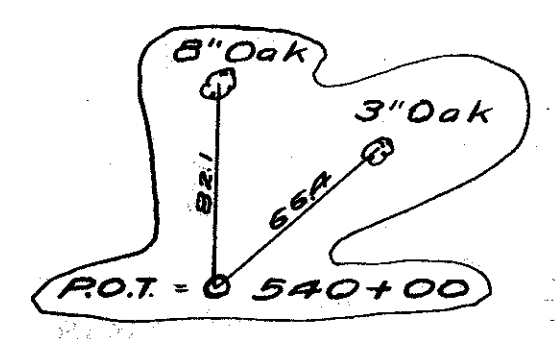
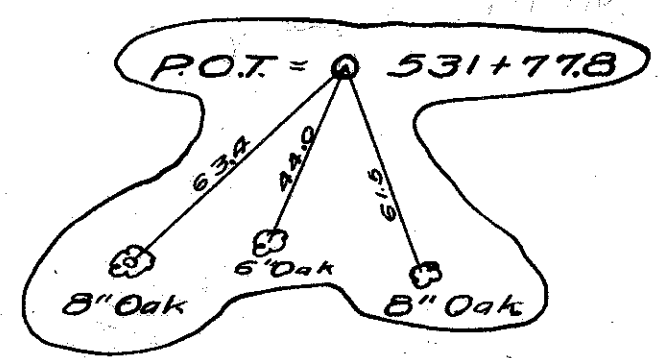
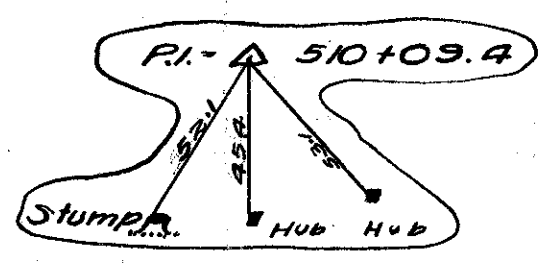
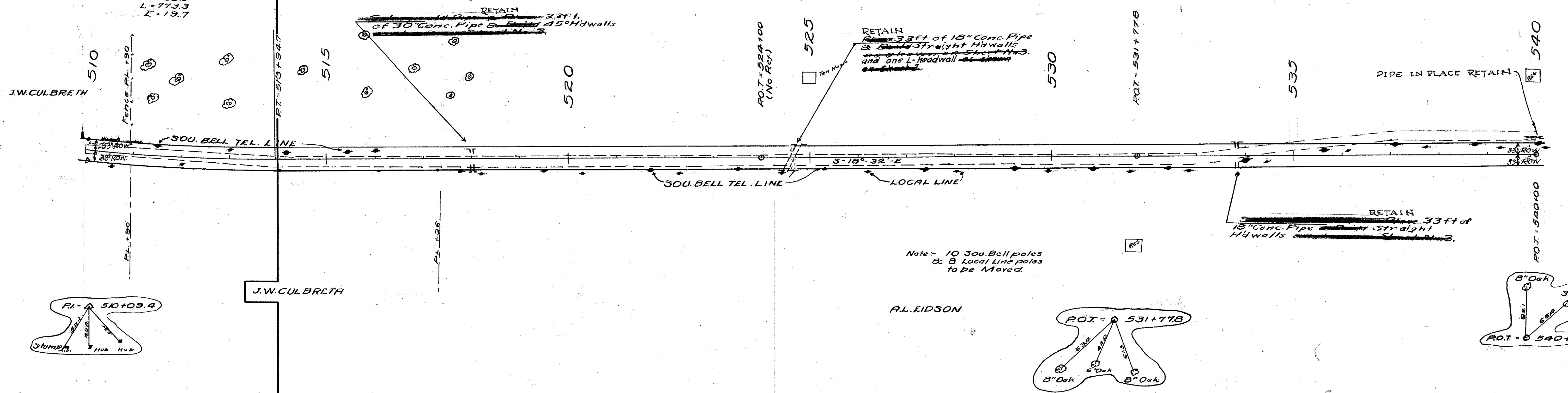
VOID

RI = 510+09.4
 D = 11°-36' L.A.
 D = 1°-30'
 T = 388.0
 L = 773.3
 E = 19.7

R.L. EIDSON

R.L. EIDSON

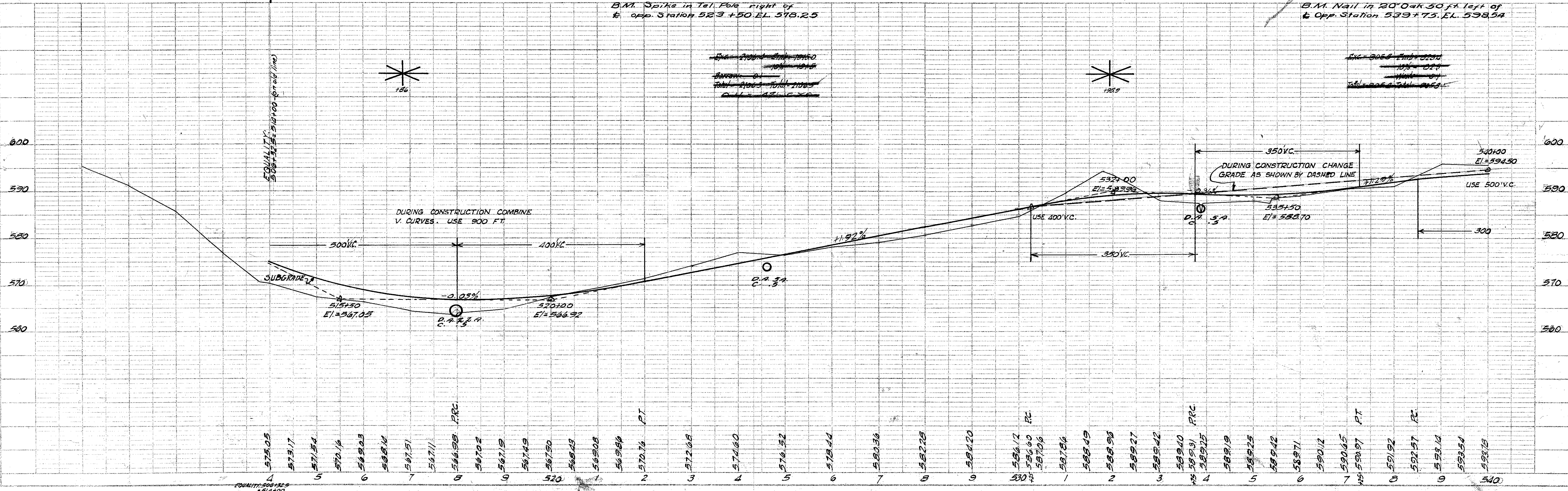
DATE: 9/17/54
 BY: I.C. CULBRETH
 CHECKED: I.C. CULBRETH
 PLANNED: I.C. CULBRETH
 SURVEYED: I.C. CULBRETH
 PLOTTED: I.C. CULBRETH
 NOTE BOOK: I.C. CULBRETH
 ALIGNED: I.C. CULBRETH
 ST. OF WAY: I.C. CULBRETH



B.M. Spike in Tel. Pole right of & opp Station 523+50 EL 578.25

B.M. Nail in 20" Oak 30 ft left of & opp Station 539+75 EL 538.54

DATE: 9/17/54
 BY: I.C. CULBRETH
 CHECKED: I.C. CULBRETH
 PLANNED: I.C. CULBRETH
 SURVEYED: I.C. CULBRETH
 PLOTTED: I.C. CULBRETH
 NOTE BOOK: I.C. CULBRETH
 ALIGNED: I.C. CULBRETH
 ST. OF WAY: I.C. CULBRETH



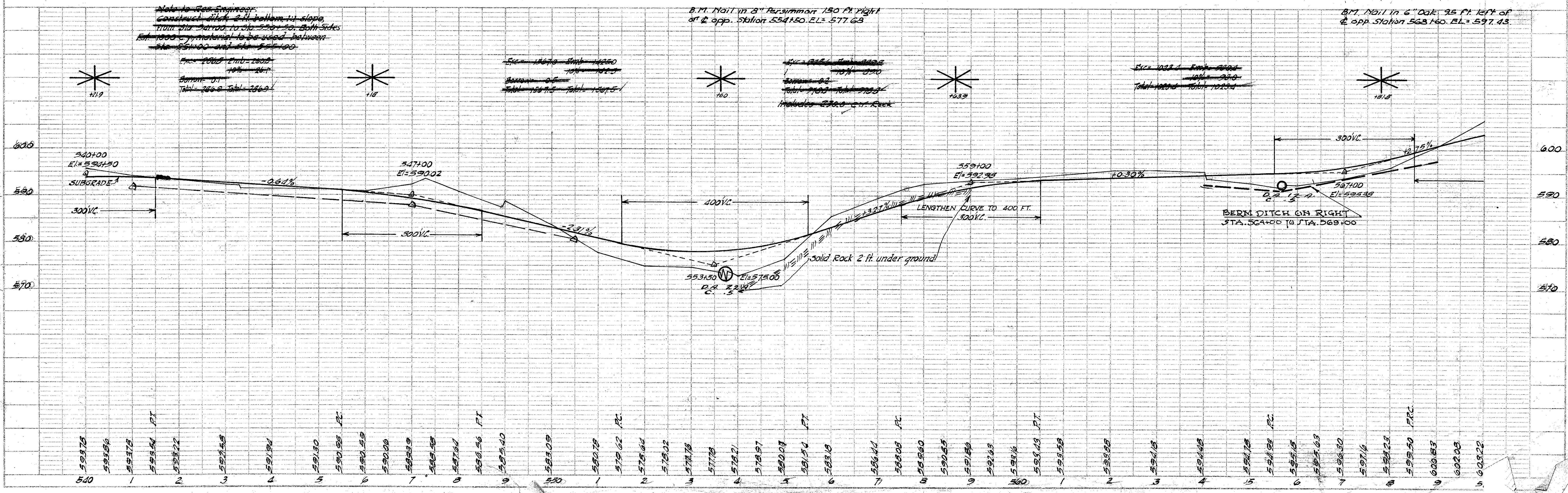
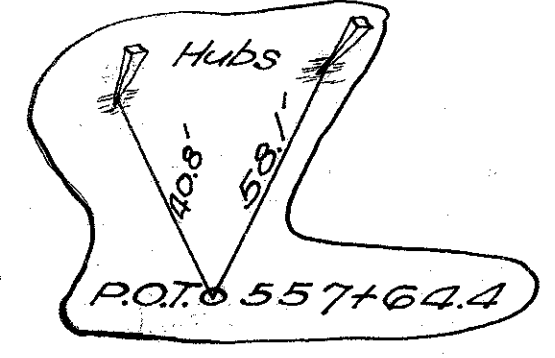
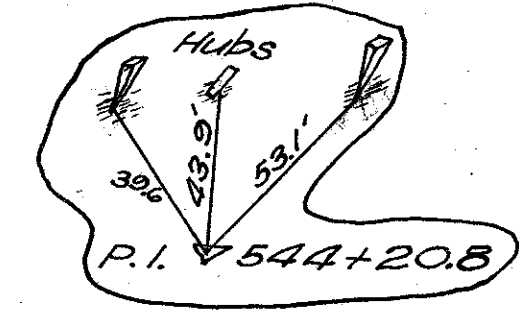
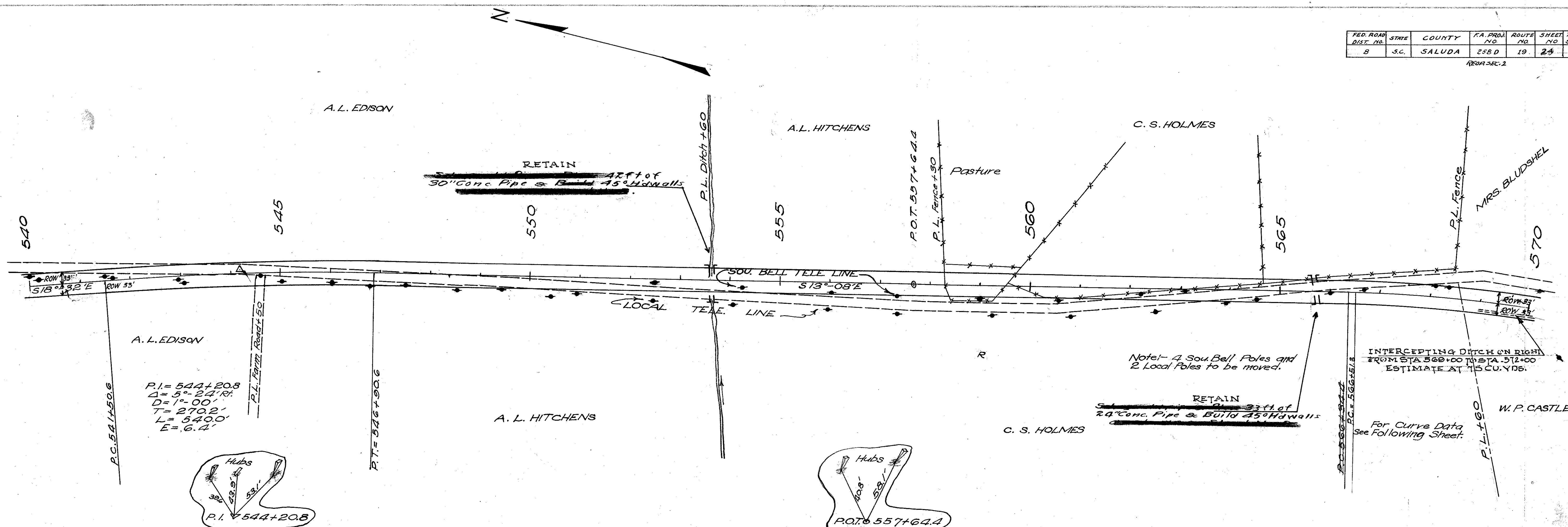
FED. ROAD DIST. NO.	STATE	COUNTY	P.A. PROJ. NO.	ROUTE NO.	SHEET NO.	TOTAL SHEETS
8	S.C.	SALUDA	258 D	19	24	25

REAR-SEC. 2

1/9/27

PLAN SURVEYED, PLOTTED, AND CHECKED BY C. H. B. J. A. DATE 1/9/27

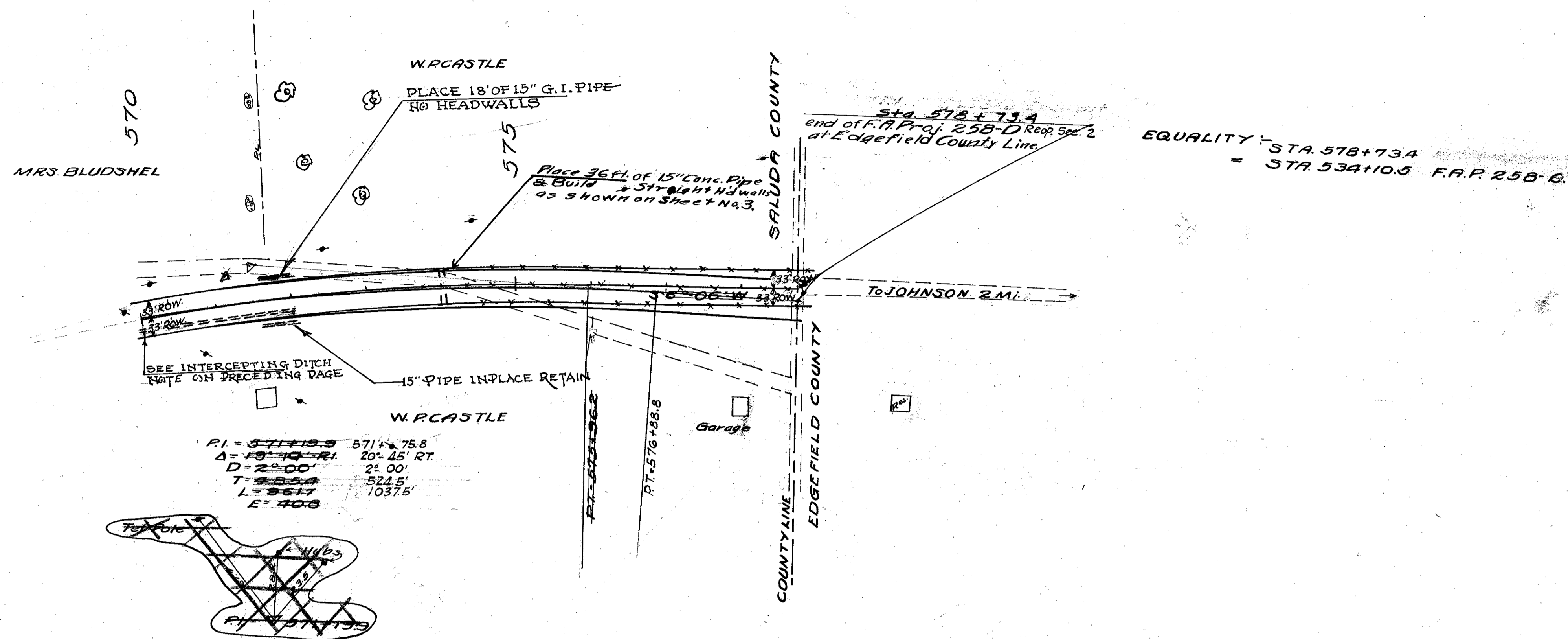
PROFILE SURVEYED, GRADES, AND NOTED BY D. S. R. C. H. J. A. DATE 1/9/27



FED. ROAD DIST. NO.	STATE	COUNTY	FA. PROJ. NO.	ROUTE NO.	SHEET NO.	TOTAL SHEETS
8	S.C.	SALUDA	258-D	19	25	25

PROP. SEC. 1

DATE: 3/28/27
 BY: R. J. A.
 CHECKED: R. J. A.
 NO.:



DATE: 3/28/27
 BY: R. J. A.
 CHECKED: R. J. A.
 NO.:

