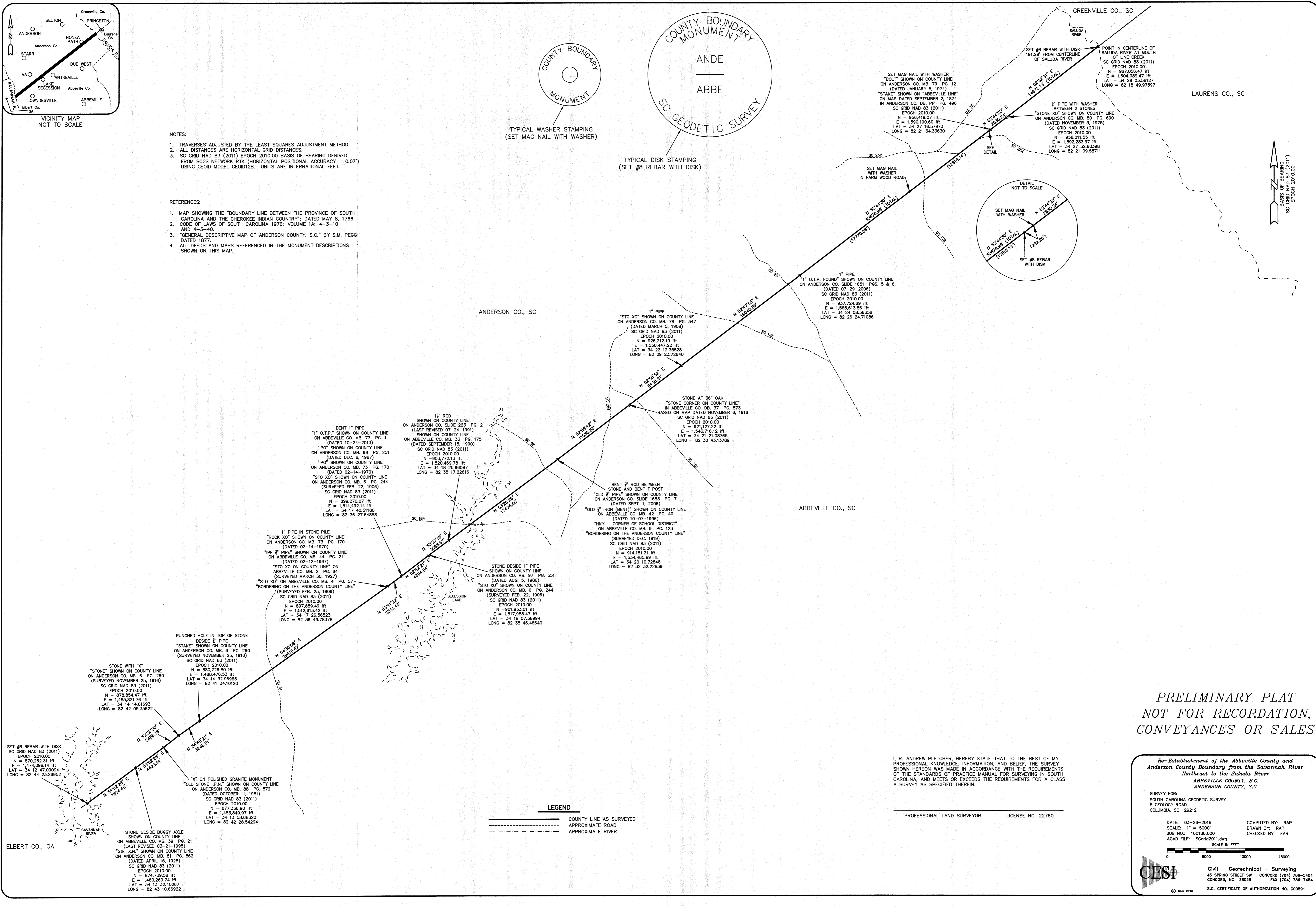


- NOTES:
1. TRAVERSES ADJUSTED BY THE LEAST SQUARES ADJUSTMENT METHOD.
 2. ALL DISTANCES ARE HORIZONTAL GRID DISTANCES.
 3. SC GRID NAD 83 (2011) EPOCH 2010.00 BASIS OF BEARING DERIVED FROM SOGS NETWORK RTK (HORIZONTAL POSITIONAL ACCURACY = 0.07') USING GEOID MODEL GEOID12B. UNITS ARE INTERNATIONAL FEET.

- REFERENCES:
1. MAP SHOWING THE "BOUNDARY LINE BETWEEN THE PROVINCE OF SOUTH CAROLINA AND THE CHEROKEE INDIAN COUNTRY"; DATED MAY 8, 1766. CODE OF LAWS OF SOUTH CAROLINA 1976; VOLUME 1A; 4-3-10 AND 4-3-40.
 2. "GENERAL DESCRIPTIVE MAP OF ANDERSON COUNTY, S.C." BY S.M. PEGG; DATED 1877.
 3. ALL DEEDS AND MAPS REFERENCED IN THE MONUMENT DESCRIPTIONS SHOWN ON THIS MAP.



LEGEND

—	COUNTY LINE AS SURVEYED
- - - - -	APPROXIMATE ROAD
~~~~~	APPROXIMATE RIVER

I, R. ANDREW PLETCHER, HEREBY STATE THAT TO THE BEST OF MY PROFESSIONAL KNOWLEDGE, INFORMATION, AND BELIEF, THE SURVEY SHOWN HEREON WAS MADE IN ACCORDANCE WITH THE REQUIREMENTS OF THE STANDARDS OF PRACTICE MANUAL FOR SURVEYING IN SOUTH CAROLINA, AND MEETS OR EXCEEDS THE REQUIREMENTS FOR A CLASS A SURVEY AS SPECIFIED THEREIN.

PROFESSIONAL LAND SURVEYOR LICENSE NO. 22780

**PRELIMINARY PLAT  
NOT FOR RECORDATION,  
CONVEYANCES OR SALES**

*Re-Establishment of the Abbeville County and Anderson County Boundary from the Savannah River Northeast to the Saluda River*  
**ABBEVILLE COUNTY, S.C.**  
**ANDERSON COUNTY, S.C.**

SURVEY FOR:  
SOUTH CAROLINA GEODETIC SURVEY  
5 GEOLOGY ROAD  
COLUMBIA, SC 29212

DATE: 03-26-2018  
SCALE: 1" = 5000'  
JOB NO.: 160186.000  
ACAD FILE: SCgrd2011.dwg

COMPUTED BY: RAP  
DRAWN BY: RAP  
CHECKED BY: FAR

SCALE IN FEET  
0 5000 10000 15000

**CESI** Civil - Geotechnical - Surveying  
45 SPRING STREET SW CONCORD (704) 786-5404  
CONCORD, NC 28025 FAX (704) 786-7454

© CSI 2018 S.C. CERTIFICATE OF AUTHORIZATION NO. C00591