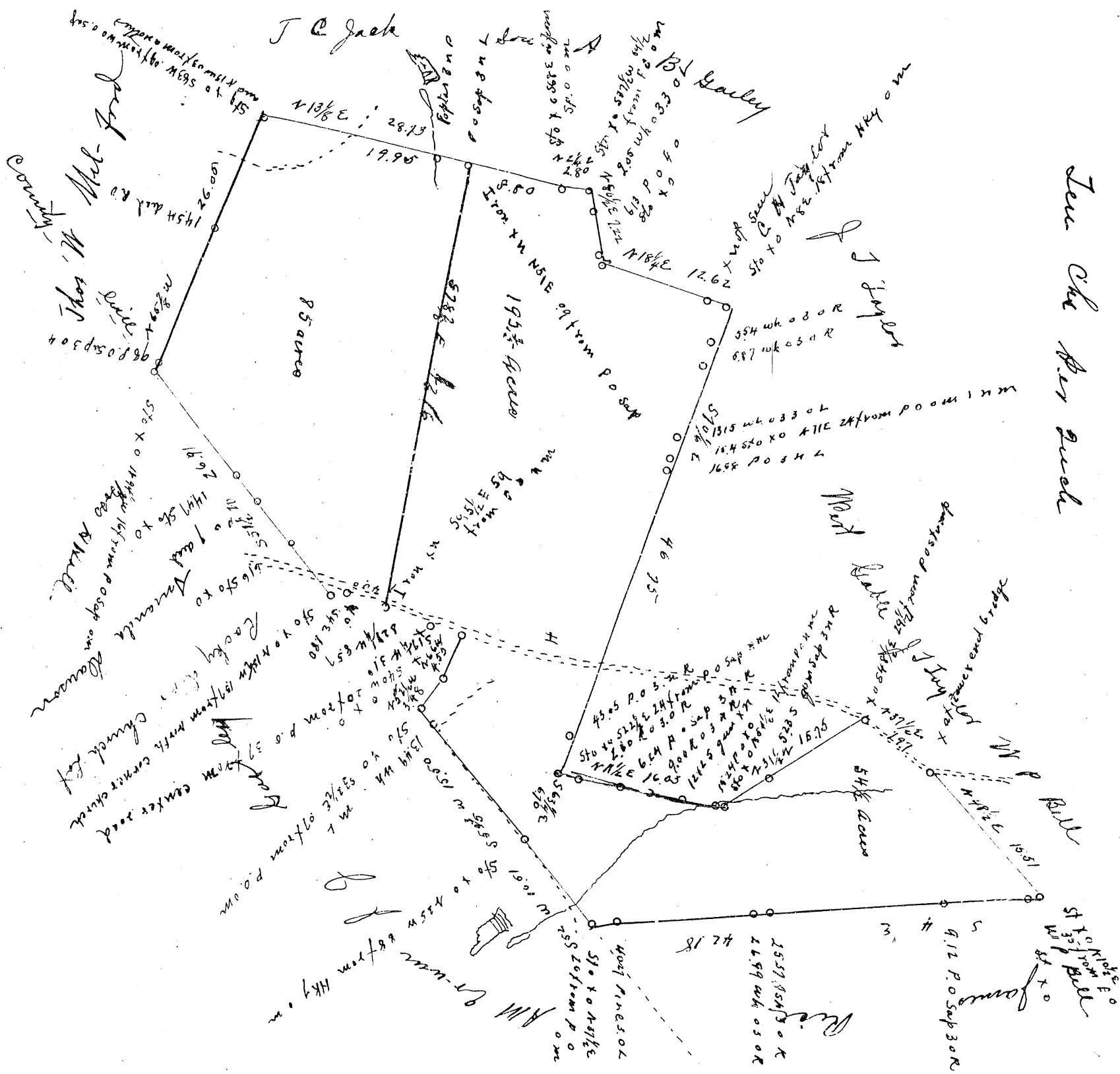


See also Plat Book

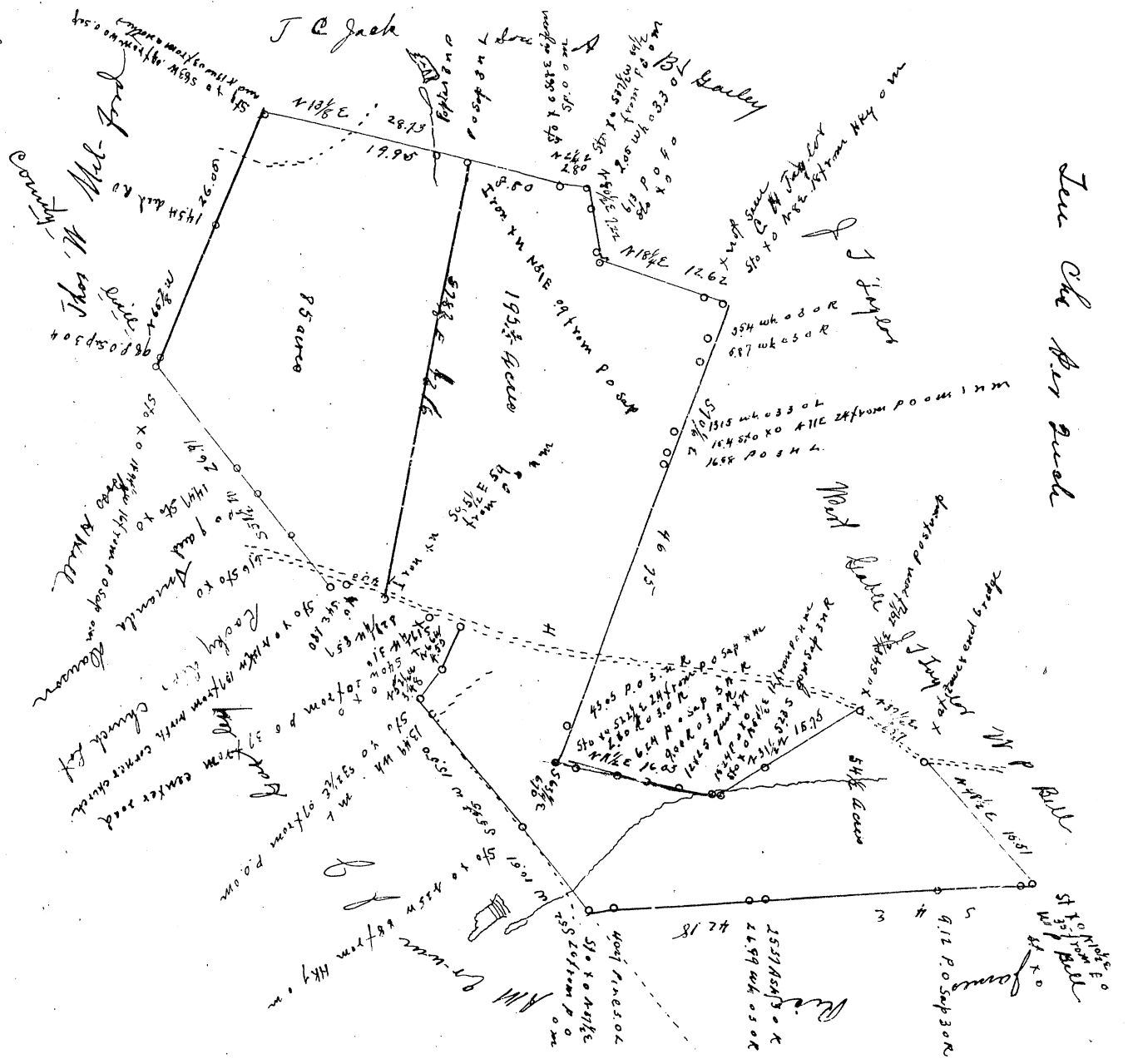


South Carolina
 Anderson County the above plat represents a tract of land
 alonging to Ezekiel Hall. The said parcel is composed
 of three tracts, containing about 65 acres, each. The recent survey
 makes of one four hundred ninety five and 3/8 (195 3/8) acres.
 The blue contains fifty four and one half (54 1/2) acres, making
 250 1/4 acres, situated in the states and county aforesaid, and
 bordering on the abtville county line
 Surveyed July 2nd 1906.
 Wm. J. Mitchell
 Surveyor & C. E.

Recorded Jan 22-1917



STERLING



East Brosilias
 Anderson County the above plat represents a tract of land
 belonging to Eckel Hall. The pub. covered piece is composed
 of three tracts, containing about 66 acres, each the result survey
 made of one run tub and ninety five and 3/4 (1963) acre
 the blue contains fifty four and one half (54 1/2) acres, making
 250 1/4 acres, situated in the state and county of said, and
 bordering on the obitelle count, line
 Surveyed July 22nd 1906.
 Wm. J. Mitchell.
 Surveyor & C. E.

Recorded Jan 22-1917

1 2 3 4 5 6 7 8 9 10 11 12
 13 14 15 16 17 18 19 20 21 22 23 24
 25 26 27 28 29 30 31 32 33 34 35 36
 37 38 39 40 41 42 43 44 45 46 47 48
 49 50 51 52 53 54 55 56 57 58 59 60
 61 62 63 64 65 66 67 68 69 70 71 72
 73 74 75 76 77 78 79 80 81 82 83 84
 85 86 87 88 89 90 91 92 93 94 95 96
 97 98 99 100
 STERLING
 1 2 3 4 5 6 7 8 9 10 11 12
 13 14 15 16 17 18 19 20 21 22 23 24
 25 26 27 28 29 30 31 32 33 34 35 36
 37 38 39 40 41 42 43 44 45 46 47 48
 49 50 51 52 53 54 55 56 57 58 59 60
 61 62 63 64 65 66 67 68 69 70 71 72
 73 74 75 76 77 78 79 80 81 82 83 84
 85 86 87 88 89 90 91 92 93 94 95 96
 97 98 99 100