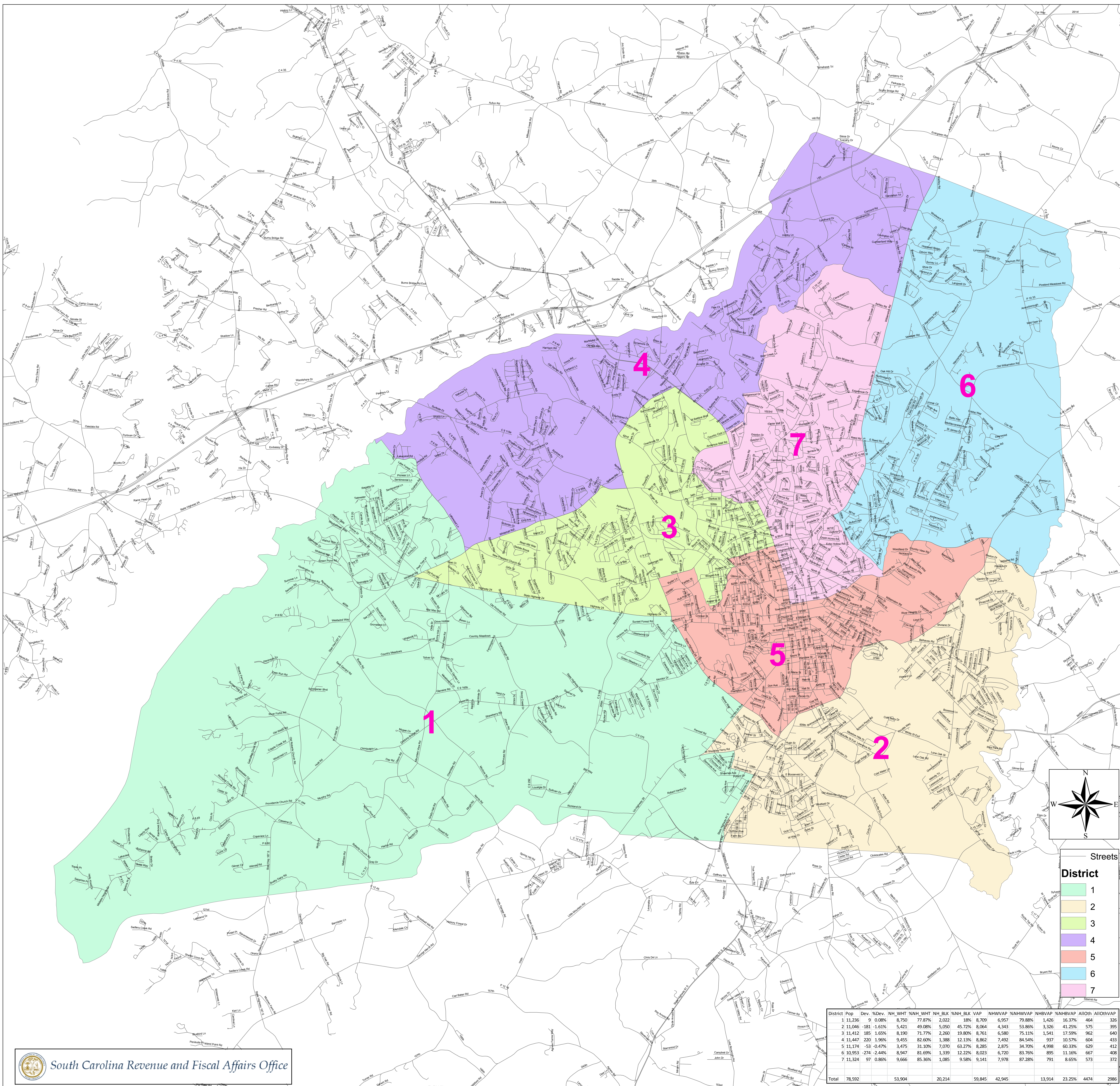


Anderson County School District 5

S-07-05-14



District	Pop	Dev.	%Dev.	NH	WHT	%NH	WHT	NH	BLK	%NH	BLK	VAP	NH/VAP	%NH/VAP	NH/VAP	%NH/VAP	AI/OTH	AI/OTH/VAP
1	11,236	9	0.08%	8,750	77.87%	2,022	18%	8,709	6,957	79.88%	1,426	16.37%	464	336				
2	11,046	-181	-1.61%	5,421	49.08%	5,050	45.72%	8,064	4,343	53.86%	3,326	41.25%	575	395				
3	11,412	185	1.65%	8,190	71.77%	2,260	19.80%	8,761	6,580	75.11%	1,541	17.59%	962	640				
4	11,174	220	1.96%	9,455	82.60%	1,388	12.13%	8,862	7,492	84.54%	937	10.57%	604	433				
5	11,174	-53	-0.47%	3,475	31.10%	7,070	63.27%	8,285	2,875	34.70%	4,998	60.33%	629	412				
6	10,953	-274	-2.44%	8,947	81.69%	1,339	12.22%	8,023	6,720	83.76%	895	11.16%	667	408				
7	11,324	97	0.86%	9,666	85.36%	1,085	9.58%	9,141	7,978	87.28%	791	8.65%	573	372				
Total	78,592			53,904		20,214		59,845	42,945		13,914	23.25%	4474	2986				