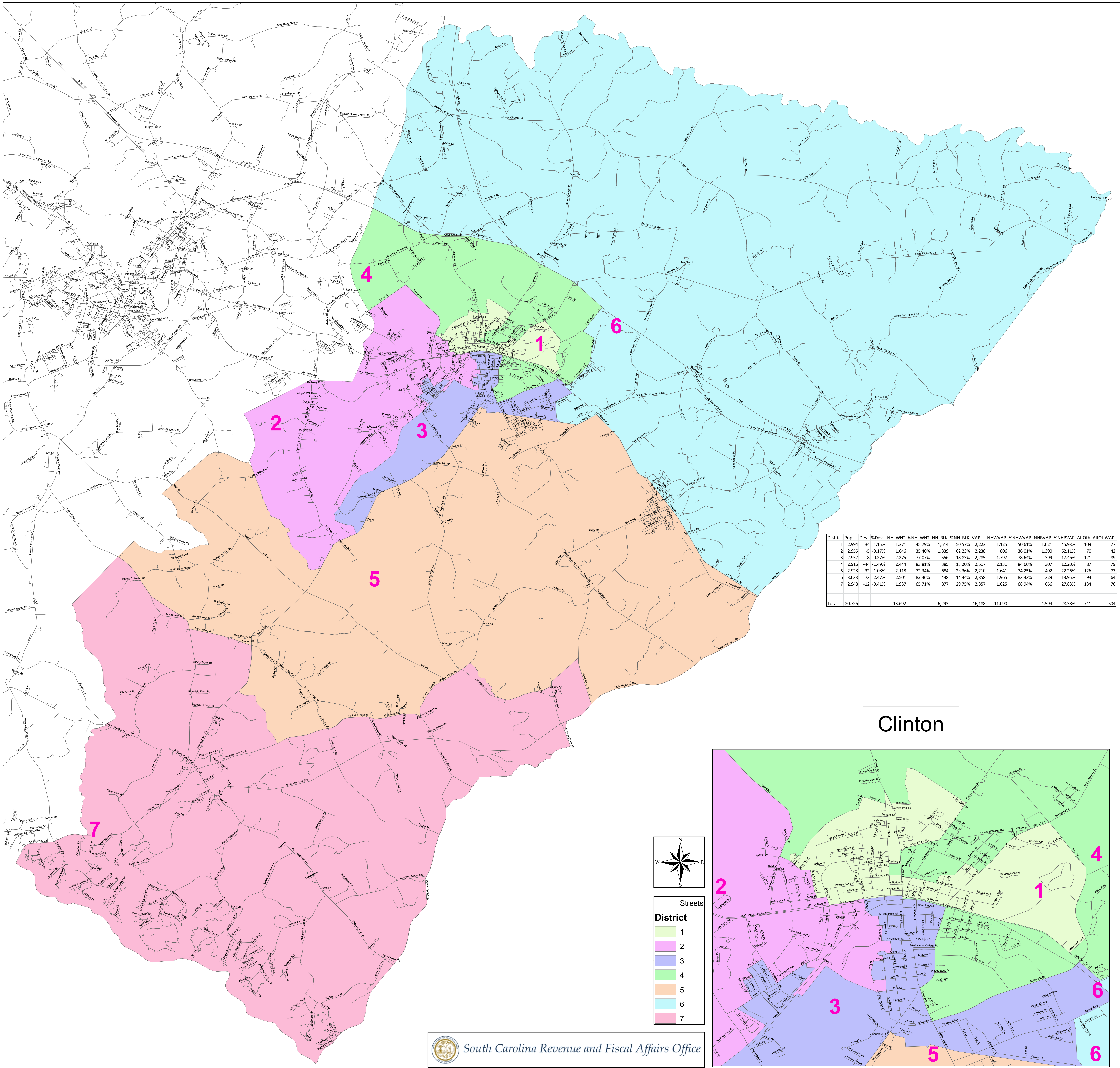


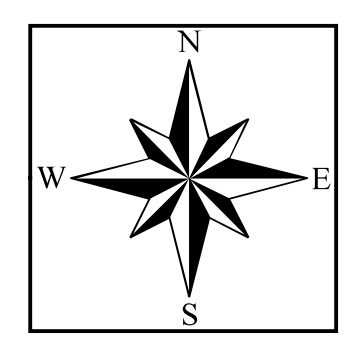
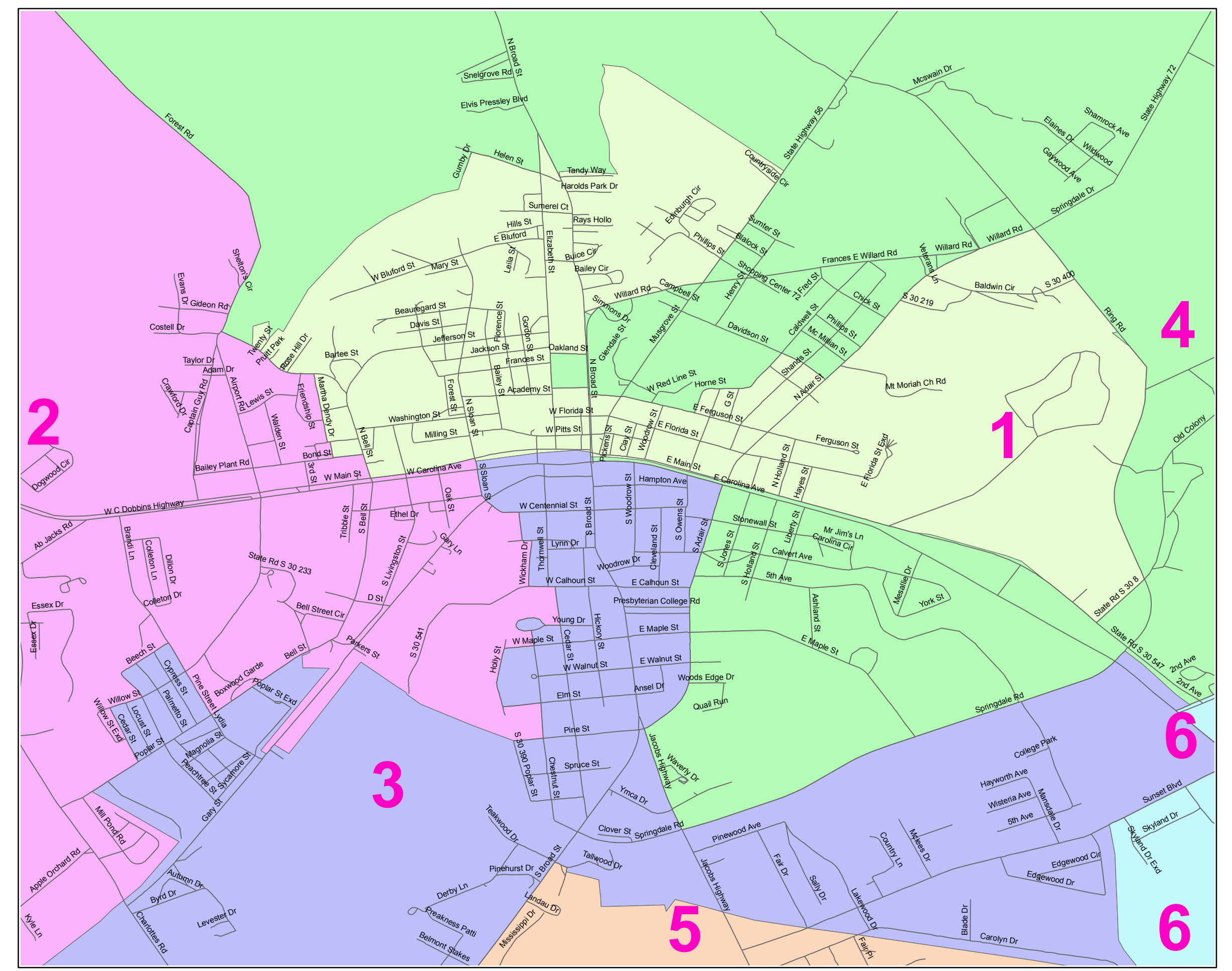
Laurens County School District 56

S-59-56-15



District	Pop	Dev.	%Dev.	NH	WHT	%NH	WHT	NH_BLK	%NH_BLK	VAP	NHWP	%NHWP	NHBP	%NHBP	AIOth	AIOthVAP
1	2,994	34	1.15%	1,371	45.79%	1,514	50.57%	2,223	74.11%	1,125	37.58%	1,021	34.11%	1,09	3.64%	77
2	2,955	-5	-0.17%	1,046	35.40%	1,839	62.23%	2,238	75.78%	806	27.28%	1,390	46.70%	70	2.37%	42
3	2,952	-8	-0.27%	2,275	77.07%	556	18.83%	2,285	77.40%	1,797	60.88%	399	13.35%	121	4.10%	89
4	2,916	-44	-1.49%	2,444	83.81%	385	13.20%	2,517	86.35%	2,131	73.08%	307	10.53%	126	4.32%	77
5	2,928	-32	-1.08%	2,118	72.34%	684	23.36%	2,210	75.51%	1,641	56.04%	492	16.80%	126	4.32%	77
6	3,033	73	2.47%	2,501	82.46%	438	14.44%	2,358	77.74%	1,965	64.78%	329	10.85%	94	3.10%	64
7	2,948	-12	-0.41%	1,937	65.71%	877	29.75%	2,357	79.95%	1,625	55.15%	656	22.27%	134	4.55%	76
Total	20,726			13,692	65.58%	6,293	30.36%	16,188	78.11%	11,090	53.47%	4,594	22.12%	741	3.58%	504

Clinton



Streets

District

- 1
- 2
- 3
- 4
- 5
- 6
- 7