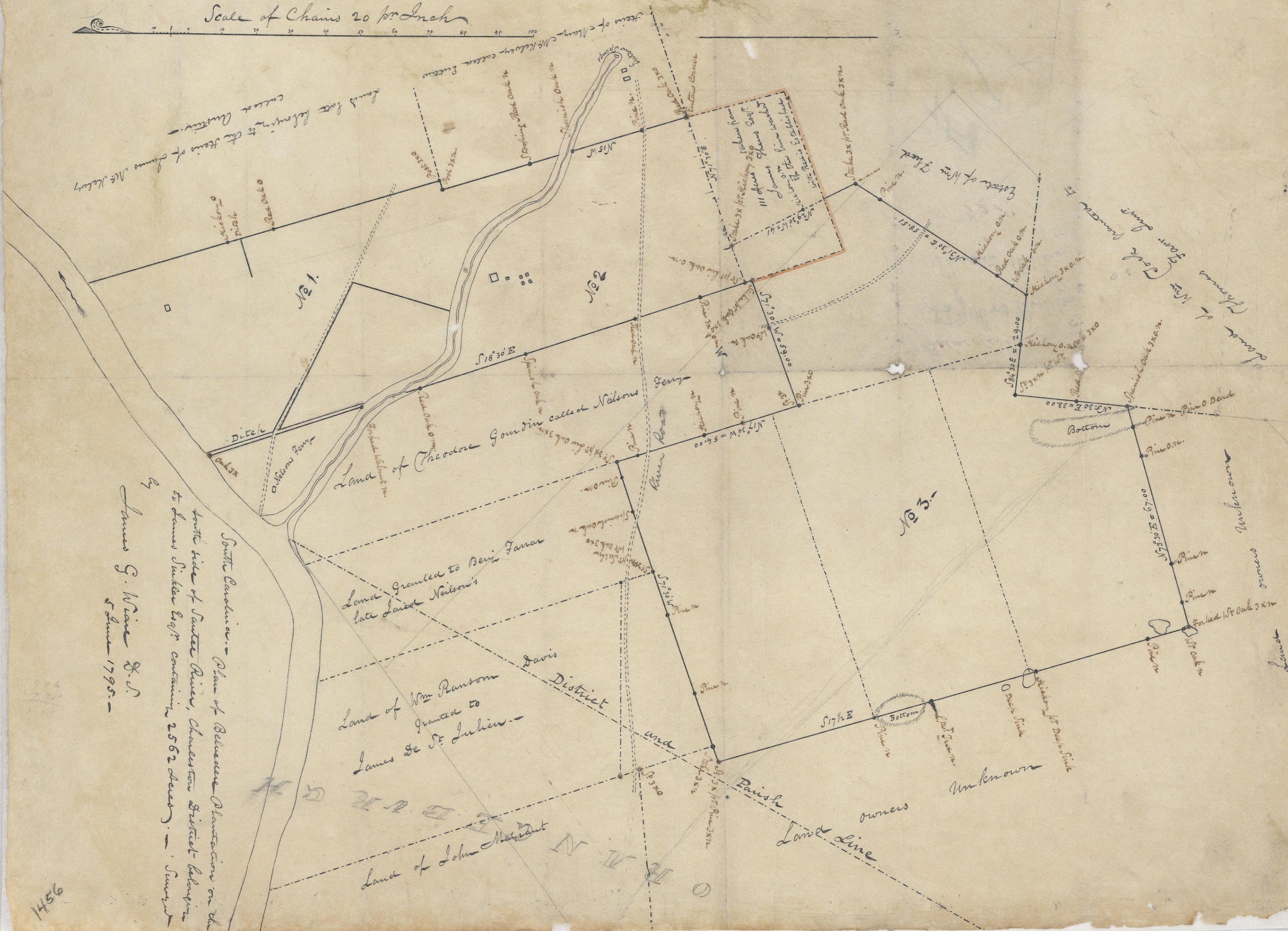


(The dotted line running from the corner to Stake 1/2 Acre 3x0 is the line of a Tract of Acres. granted to James M. Kelley the day of now belonging to James (Thurs Esq) and appears to have been run by the said M. Kelley as a Boundary for M. Sinkler from a supposition that his land extended no further from the river than the Entaw Springs tract. - But M. Sinkler being the prior grant & Platted to extend 44 chains further back than the Pine 3x0m W. (the last marked tree in the original Plan) will give the dotted line washed with red for M. Sinkler's proper Boundary and take from M. Thurs tract 111 Acres from N 3, 45 Acres -

B 518

Scale of Chains 20 per Inch



1456