

SCALE
1 INCH = 10 CUS

Bamberg County
COLLETON
County

MAP
OF
PORTION OF COLLETON CO.
CONTAINING 3.90 SQ. MI.
PROPOSED ANNEX
TO
BAMBERG CO.

Surveyed Oct. 1912.

T. E. Byrd,
G. W. Frederick } Surveyors.
Creston, Ill.

#1-354

N



SCALE

1 INCH = 10 CHS.

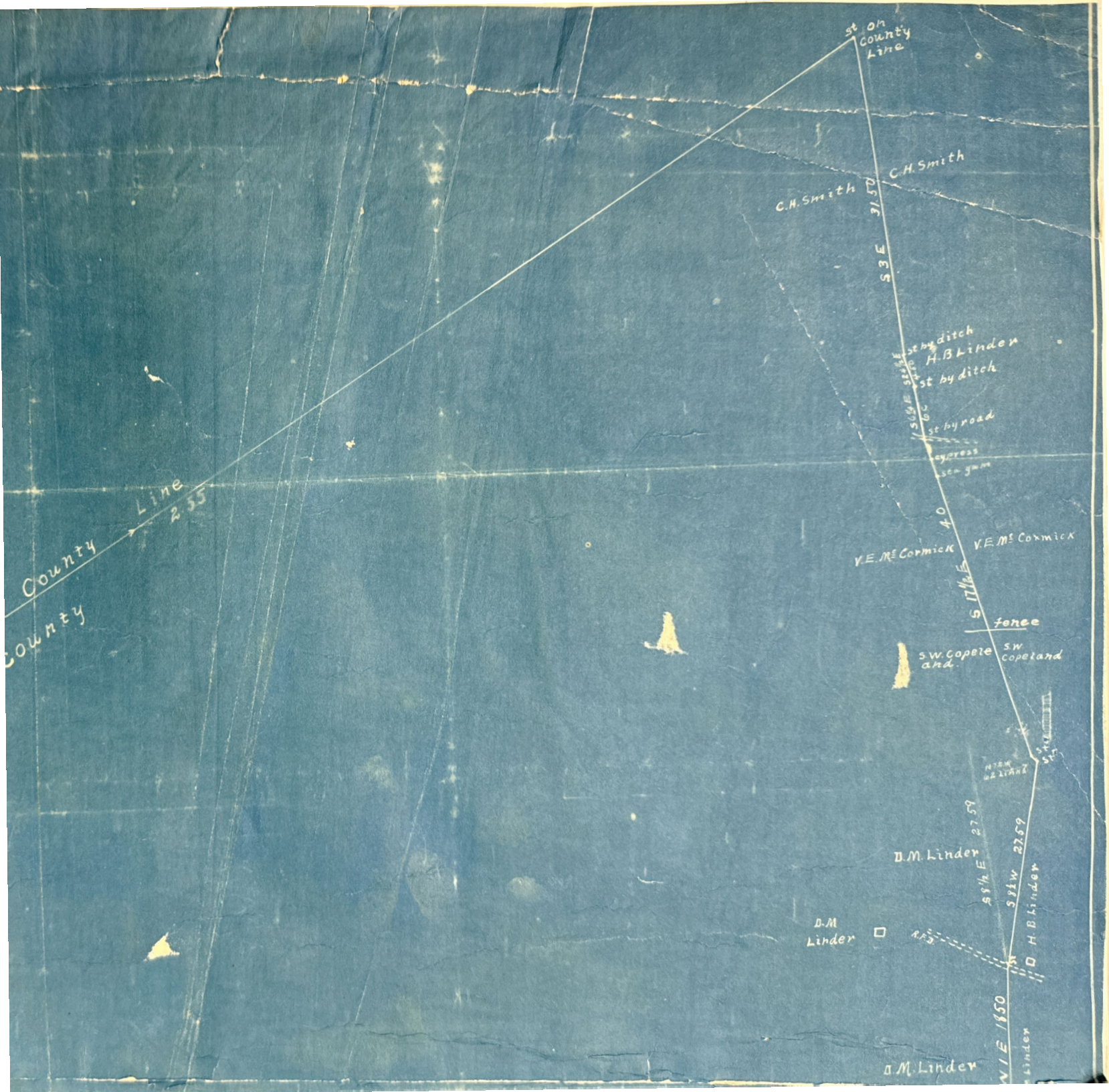


Bamberg County
County Stone
Eton County
N 58 E
County

COLLETON

W A SIMON

Branch



Branch

□ Jacob Carter

□ E.L. Goodwin

□ Goodwin

Branch

Branch

S 66 1/2° W 74.25
Stearns

Stop
Pine

S 33 1/2° W
Pine

Gum 11

Little
Saw
M
S
W
P



MAP
OF
PORTION OF COLLETON CO.
CONTAINING 3.90 SQ. MI.
PROPOSED ANNEX
TO
BAMBERG CO.

Surveyed Oct. 1917.

N. E. Byrd,
W. W. Frederick } Surveyors.
Oreston Ott }

#1-354