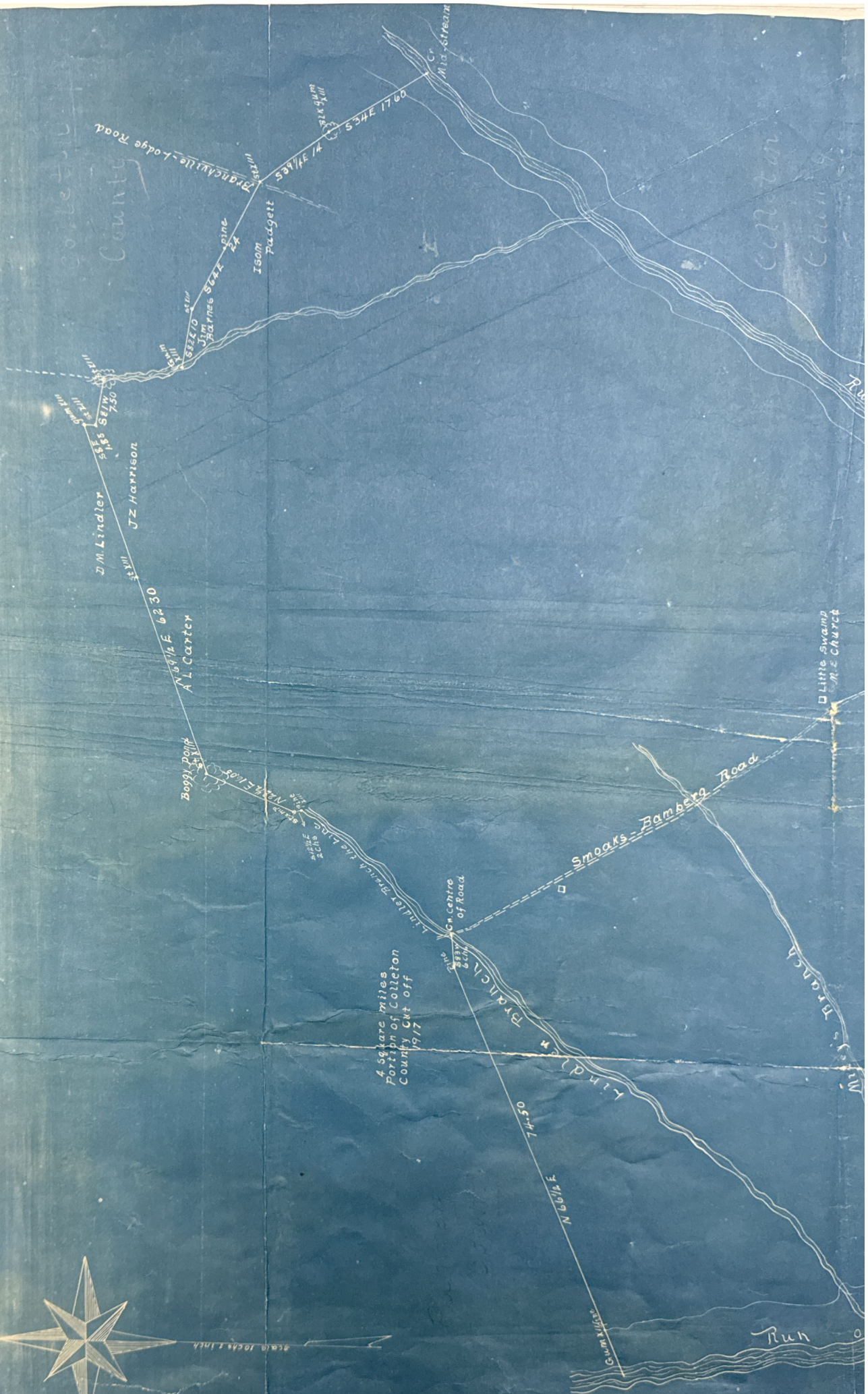
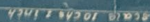




MAP  
OF  
PORTION OF COLLETON CO.  
CONTAINING 3.7 sq. mi.  
PROPOSED ANNEX  
TO  
BAMBERG COUNTY  
Surveyed Feb 1919 by  
N.E. Byrd  
T.W. Frederick  
Orators Ott  
Surveyors

41-344







MAP  
OF  
PORTION OF COLLETON CO.  
CONTAINING 3.7 SQ. MI.  
PROPOSED ANNEX  
TO  
BAMBERG COUNTY

Surveyed Feb 1913 by

N. E. Byrd  
F. W. Frederick  
Orators Ott

Surveyors

#1-344

