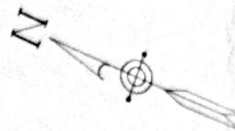
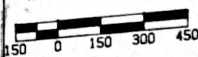
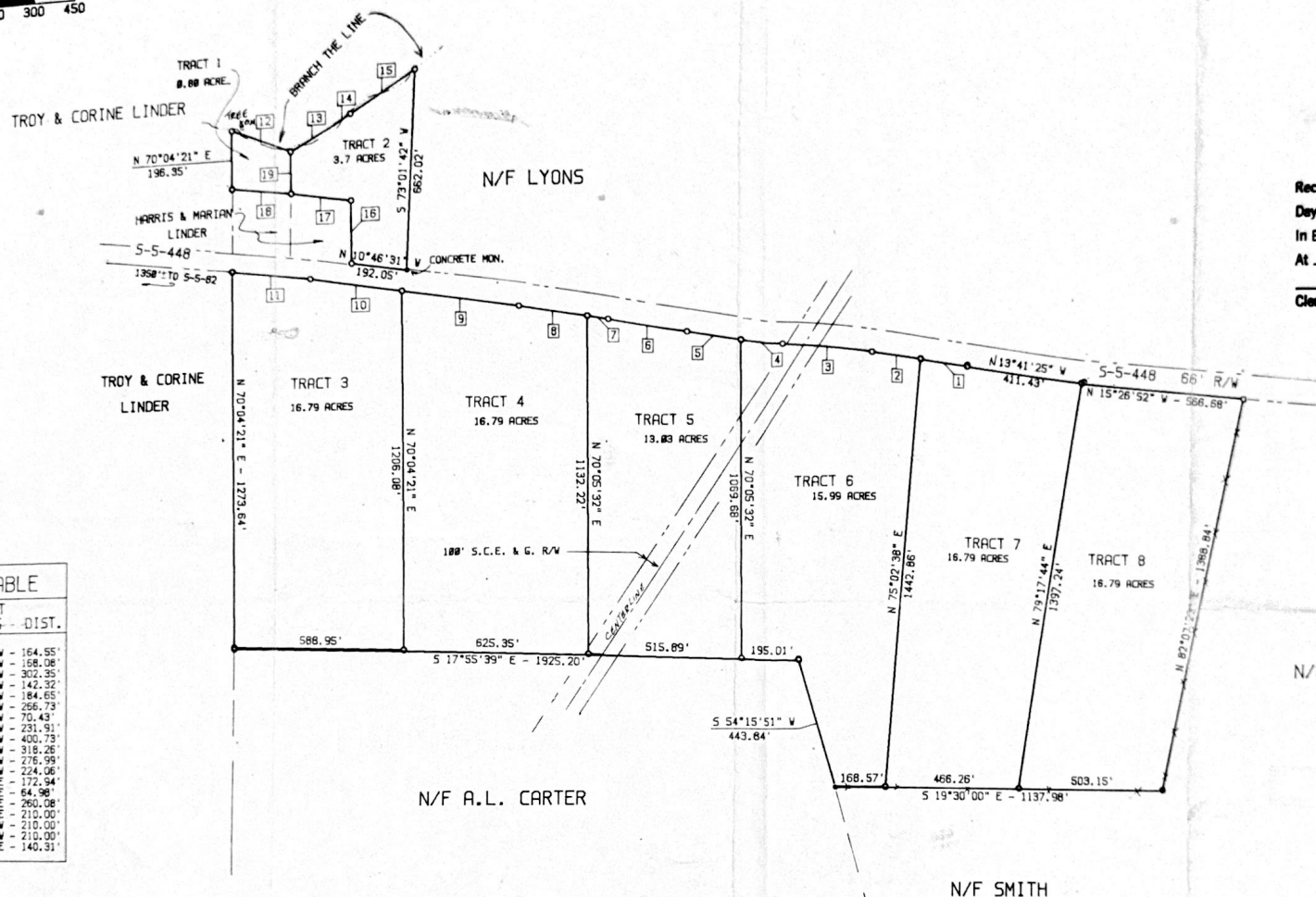
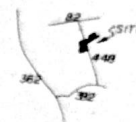


# LEGEND

- IRON NEW
- IRON OLD
- FENCE



R.S. 12.84  
11:18 AM  
Plat 126-21  
Pg 166



## LINE TABLE

QUADRANT  
LINE BEARING - DIST.

1.	N 13°42'07"	W	164.55'
2.	N 13°42'07"	W	168.08'
3.	N 13°24'50"	W	302.35'
4.	N 11°58'50"	W	142.32'
5.	N 11°02'51"	W	184.65'
6.	N 11°04'49"	W	266.73'
7.	N 10°55'13"	W	70.43'
8.	N 10°55'13"	W	231.91'
9.	N 11°24'26"	W	400.73'
10.	N 10°25'02"	W	318.26'
11.	N 12°33'26"	W	276.59'
12.	S 01°39'59"	W	224.06'
13.	S 48°35'29"	E	172.94'
14.	S 50°35'15"	E	64.96'
15.	S 50°35'44"	E	260.08'
16.	N 70°04'40"	E	210.00'
17.	N 11°17'24"	E	210.00'
18.	N 12°42'02"	E	210.00'
19.	N 70°04'25"	E	140.31'

N/F A.L. CARTER

N/F SMITH

N/F HARRISON

Recorded this 12<sup>th</sup>  
Day of May A.D. 19 87  
In Book 21 Page 166  
At 11:18 O'Clock A. M.  
Donald J. Smith, Jr.  
Clerk of Court, Bamberg County, S. C.

PLAT OF SURVEY OF THE  
BILL LINDER ESTATE

LOCATED NORTHWEST OF  
SMOAKS, BAMBERG COUNTY, S.C.  
SCALE: 1"=300'  
DATE: 11-12-87

## REFERENCES

1. PLAT BY G.E. MILEY FOR SENIE V. SMITH, 3-30-61
2. PLAT BY R.L. MIERS FOR TROY & CORINE LINDER, NO DATE.
3. PLAT BY ST. C. RHOD FOR A.L. CARTER, 2-6-34.
4. PLAT BY R.L. MIERS FOR G. LYONS, 11-16-74.

I HEREBY CERTIFY THAT THE METHOD OF PRECISION  
AND THE AREA WAS DETERMINED BY THE  
COORDINATE METHOD OF AREA CALCULATION.  
BASIS FOR BEARING IS MAGNETIC NORTH.



PREPARED BY DONALD J. SMITH, JR., INC.  
ORANGESBURG, S.C.

Donald J. Smith, Jr.  
DONALD J. SMITH, JR., R.L.S. 9764

