

MAP
OF
PORTION OF COLLETON CO.
CONTAINING 3.7 SQ.MIL.
PROPOSED ANNEX
TO
BAMBERG COUNTY

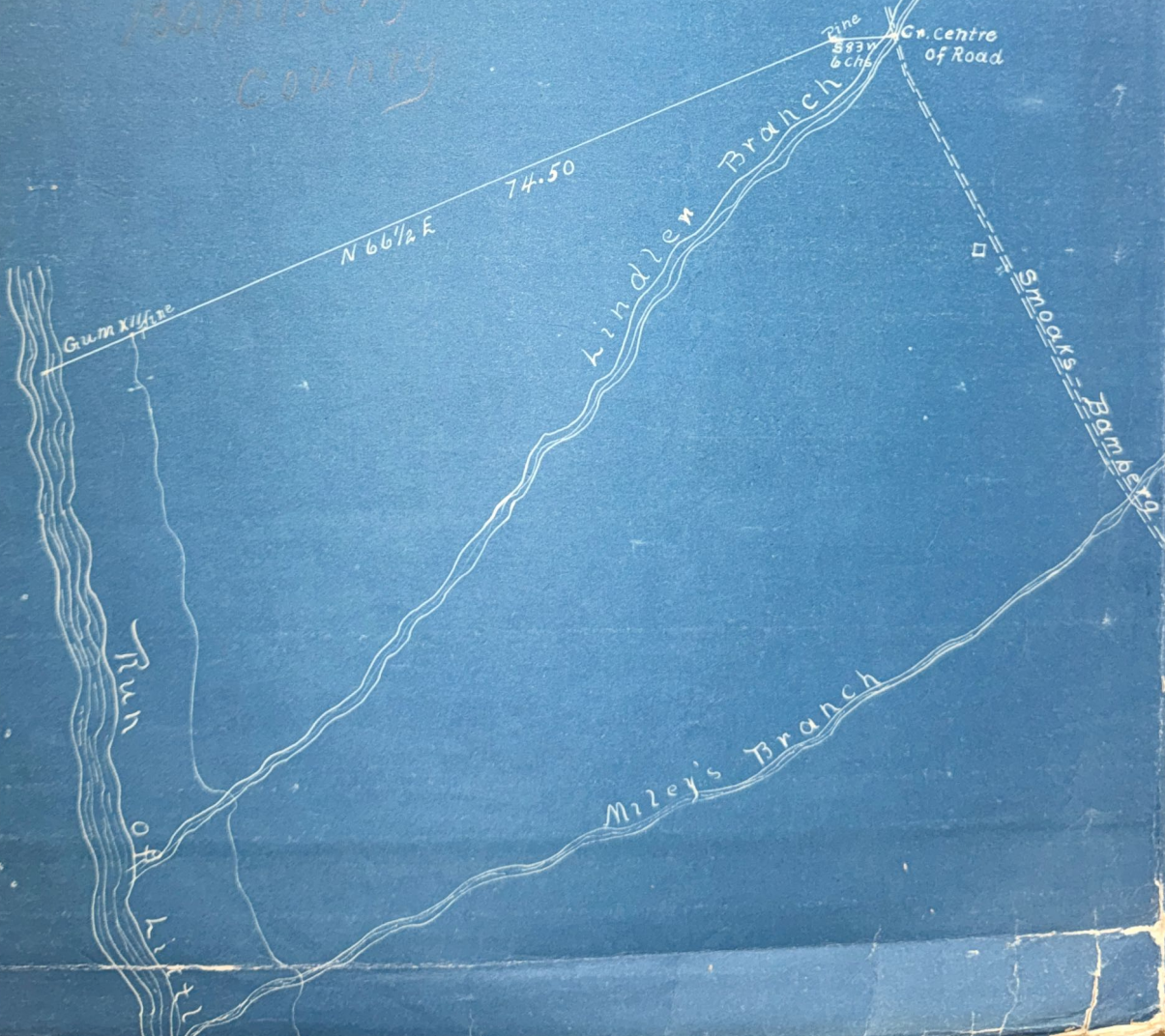
Surveyed Feb 1919 by
N. E. Byrd
F. W. Frederick
Oriston Ott
Surveyors

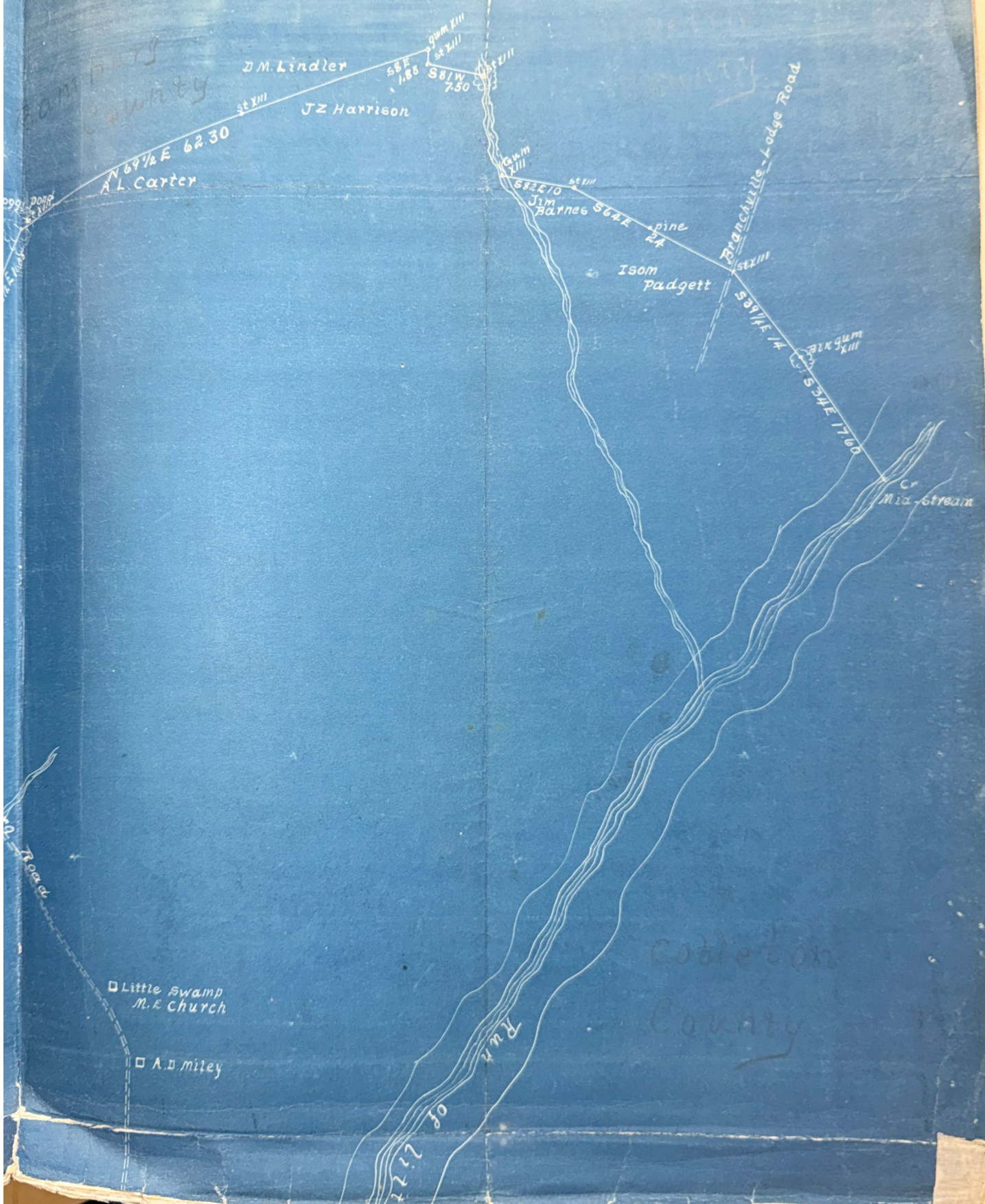


Scale 10 Chs 1 Inch

4 Square miles
Portion of Colleton
County Cut off
1917

Bamberg
County





Co. Henry Hutto's Land

Salkahachie
the
line
edge of swamp

Carters Ford
Crossing

Smacks - Lodge Road

Mauldin Rail Road

cr. mid-stream

N 82 1/2 E 43.18
Big W. oak ditch

mid-
the li

□ Norman
Bennett

Swamp
the line

MAP
OF
PORTION OF COLLETON CO.
CONTAINING 3.7 SQ. MI.
PROPOSED ANNEX
TO
BAMBERG COUNTY

Surveyed Feb 1919 by,

N. E. Byrd

F. W. Frederick

Preston Ott

Surveyors

Page 341