

# Bamberg - Colleton County Line



**Jacob Braxton, PLS**  
**County Boundary Program Manager**  
Revenue and Fiscal Affairs  
SC Geodetic Survey

# Overview

- Why is the SC Geodetic Survey the chosen agency
- Reason for boundary clarification
- The requirements and duties of the SC Geodetic Survey
- Explanation of our methods
- Boundary clarification procedure
- Legal process for individuals disagreeing with SCGS findings
- Statutory description of county boundary
- Research and findings
- Monumentation and Survey
- Conclusion



# County Boundary Re-establishment Program

## Why SC Geodetic Survey?

- Over the last 30+ years, the South Carolina Geodetic Survey has worked with South Carolina counties to help resolve ambiguities between county boundaries

### SC Code of Law SECTION 27-2-105

- The General Assembly determined it necessary to re-survey the county boundaries of the state
- Act No. 262 of 2014: “so as to authorize and direct the SCGS to clarify county boundaries...”

### WHY

- Passage of time and growth has led to confusion over statutory county descriptions and the locations of county boundary lines
- Exact and precise locations and boundaries of the State’s political subdivisions are critical for services, enforcement of property rights and election of public officials.
- Necessary for state government and political subdivisions
- Technology exists now to cost-effectively provide definite and permanent markers of boundary lines



# Steps for Clarifying Boundaries

## SC Code of Law SECTION 27-2-105 (A)(1)

- Requirements of SCGS:

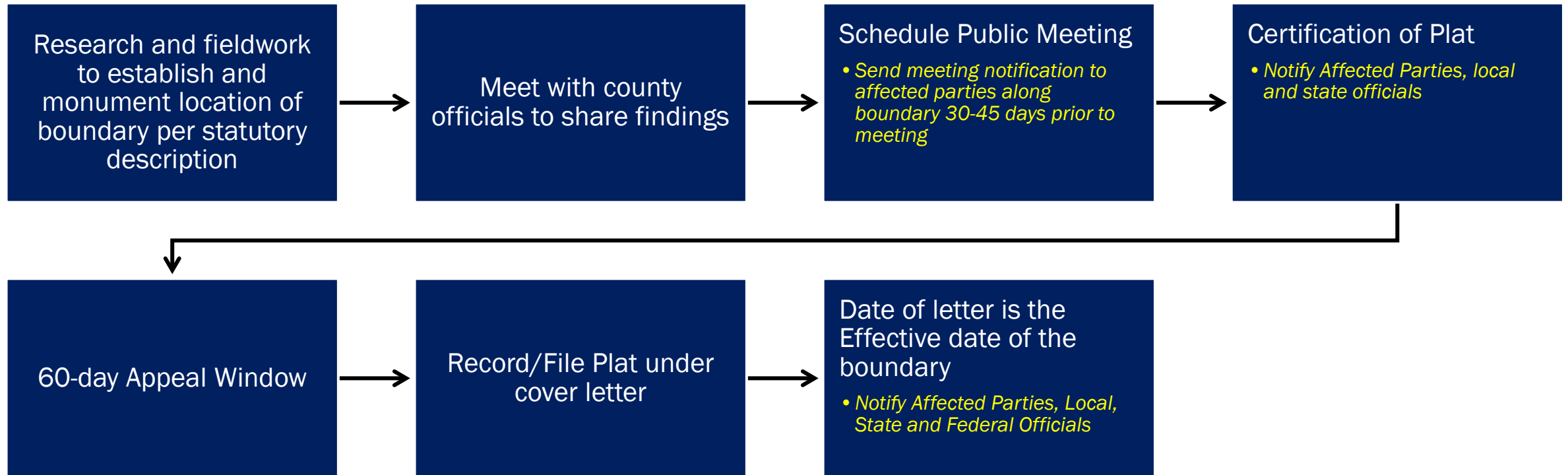
- Where county boundaries are ill-defined, unmarked, or poorly marked, the South Carolina Geodetic Survey on a cooperative basis shall assist counties in defining and monumenting the locations of county boundaries and positioning the monuments using geodetic surveys. The South Carolina Geodetic Survey (SCGS) shall seek to clarify the county boundaries as defined in Chapter 3, Title 4. The SCGS shall analyze archival and other evidence and perform field surveys geographically to position all county boundaries in accordance with statutory descriptions. Physical and descriptive points defining boundaries must be referenced using South Carolina State Plane Coordinates.

- Requirements of SCGS:

- Upon reestablishing county boundary, SCGS shall certify its work and within 30 days of certification:
- Provide copies to the administrator of each affected county; Provide written notification to affected parties
- Provide notice and copies to the public through its official website and or other means it considers appropriate; and
- Notify as it determines appropriate, other affected state and federal agencies
- (Initiates 60 Day Appeal Process)
- Certified Surveys submitted to Secretary of State, Register of Deeds Offices, and South Carolina Department of Archives with Cover Letter
- Date of the cover letter is the date the surveys become effective
- Introduce Legislation to update Code of Law to reflect clarified boundary with State Plane Coordinates



# SCGS County Boundary Clarification Process



# SC Code of Law SECTION 27-2-105 (B) (1)

- **Affected Parties Disagreeing with SCGS:**
  - May file request for a contested case hearing with the SC Administrative Law Court
  - This decision may be appealed
  - **“Affected Party”**
    - Governing body of an affected county
    - Governing body of a political subdivision of this State
    - An elected official, other than a statewide elected official
    - A property owner or an individual residing in the certification zone
    - A business entity located in the certification zone
    - A nonresident individual who owns or leases real property situated in the certification zone



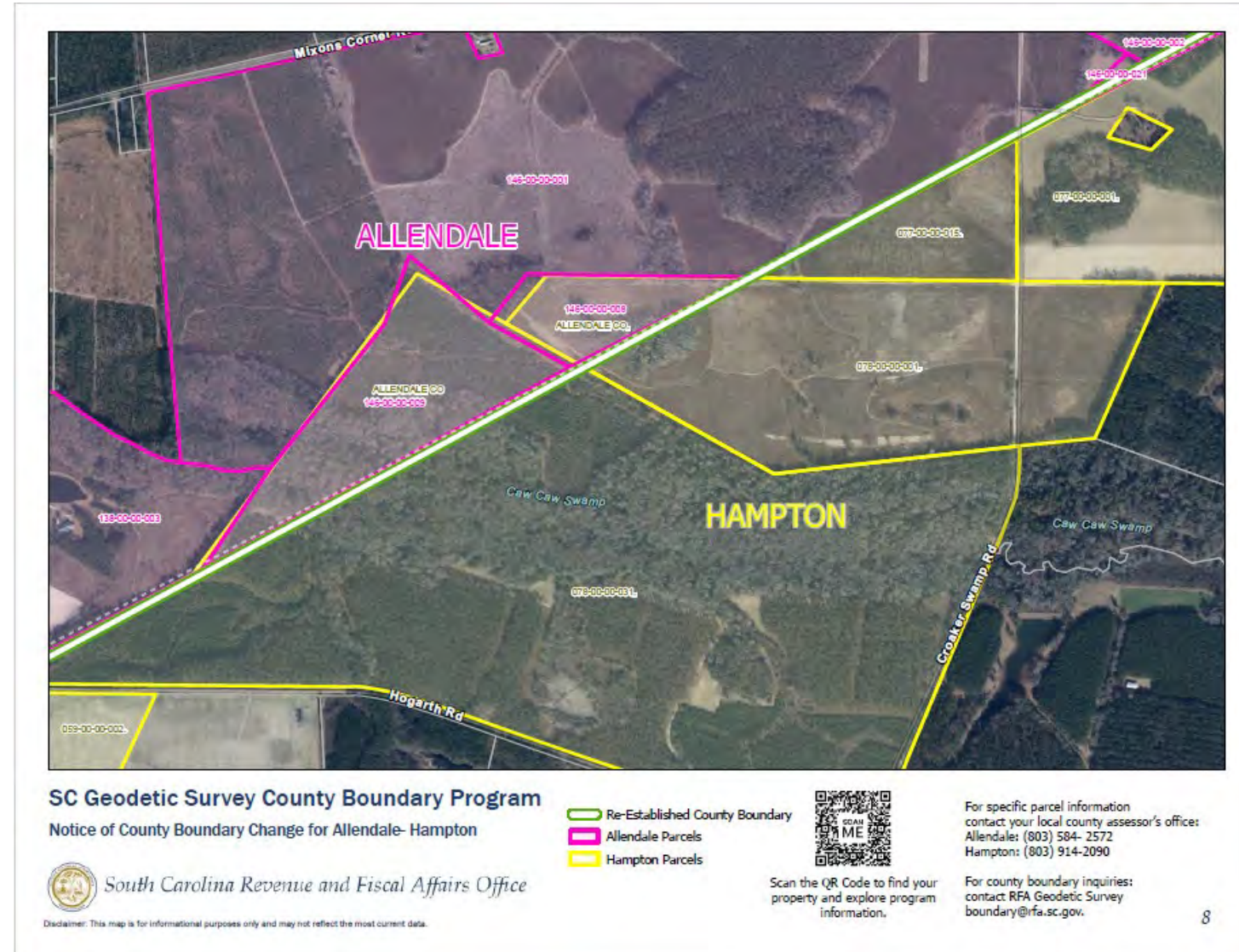
# Public Meeting Notification (Example)

- Every Property Owner along the boundary line is notified
- 1<sup>st</sup> notification informing of public meeting
- 2<sup>nd</sup> notification informing of certification of work and 60-day appeal window
- 3<sup>rd</sup> notification informing of project completion



# Public Meeting Notification (Example)

- Maps are sent with the 1<sup>st</sup> notification letting
- Showing County Parcel layers with the Re-established County boundary line overlaid



# SURVEY REPORT



**From a point in the  
Salkehatchie River  
at the  
Allendale–Hampton County Line  
to a point in the Edisto River  
at the  
Dorchester – Orangeburg County Line**



**Lines are Established by Legislative Acts**

**South Carolina Code of Laws**

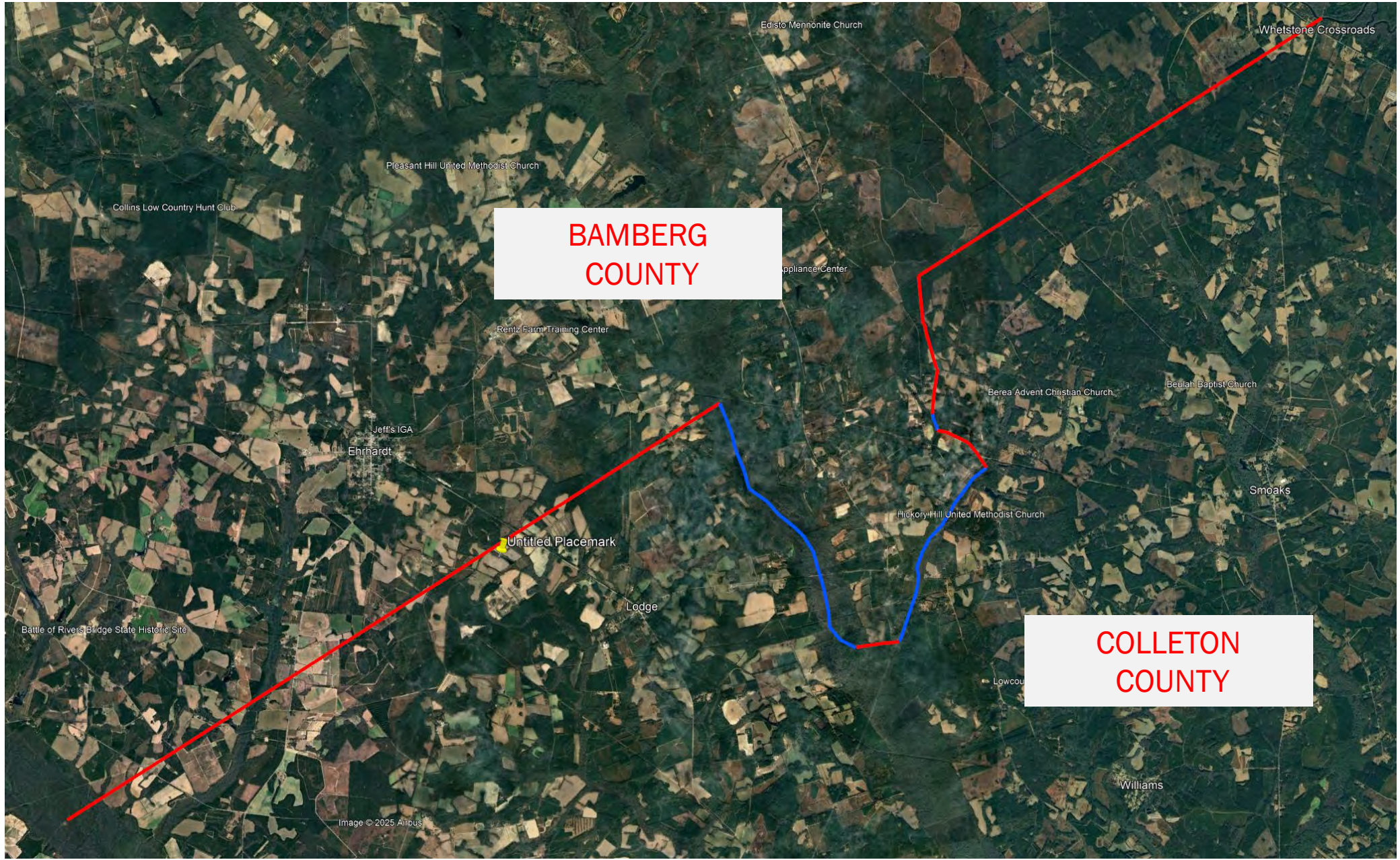
**Title 4 Counties Chapter 3**

**Boundaries of Existing Counties**

**however**

**This Line existed before the SC Legislature**





## Portions of this line were originally created as a District Line in 1768

**Creation of the Old District Line, 1768.** In the *Statutes at Large of South Carolina*, editor, David J. McCord, Vol. 7 of 10 volumes, (A.S. Johnston, Columbia, SC, 1840), page 199, the Colonial House of Representatives of South Carolina on April 12, 1768, agreed on a district line dividing Charleston and Beaufort Districts from that of Orangeburg (copy attached). Specifically, it says that Charleston precinct [or district] for courts would be established in the west by:

“a line drawn from **Nelson’s Ferry** [or Neilson’s] [on the Santee River] **directly to Mathew’s Bluff**, on Savannah River. . .” it goes on to establish the Beaufort Precinct or District along the “said line, to be continued from the main swamp aforesaid [marking the end of Charleston District], to Mathew’s Bluff, on Savannah River.” Furthermore, it established Orangeburgh’s southeastern line along, “said line from Nelson’s Ferry to Mathew’s Bluff.”



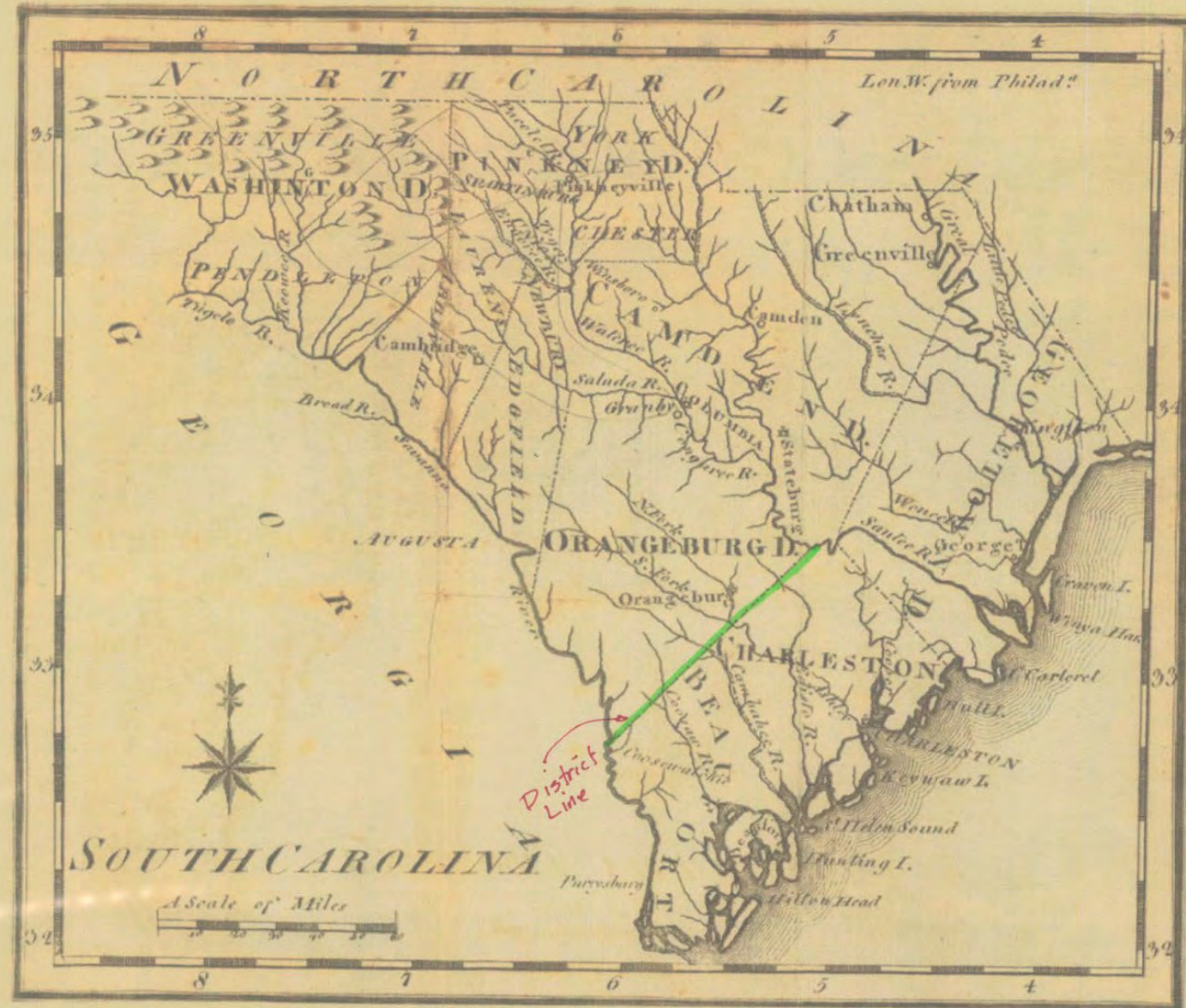
**First State map showing the  
line, 1775.  
Henry Mouzon and Other's  
map of South and North  
Carolina,**





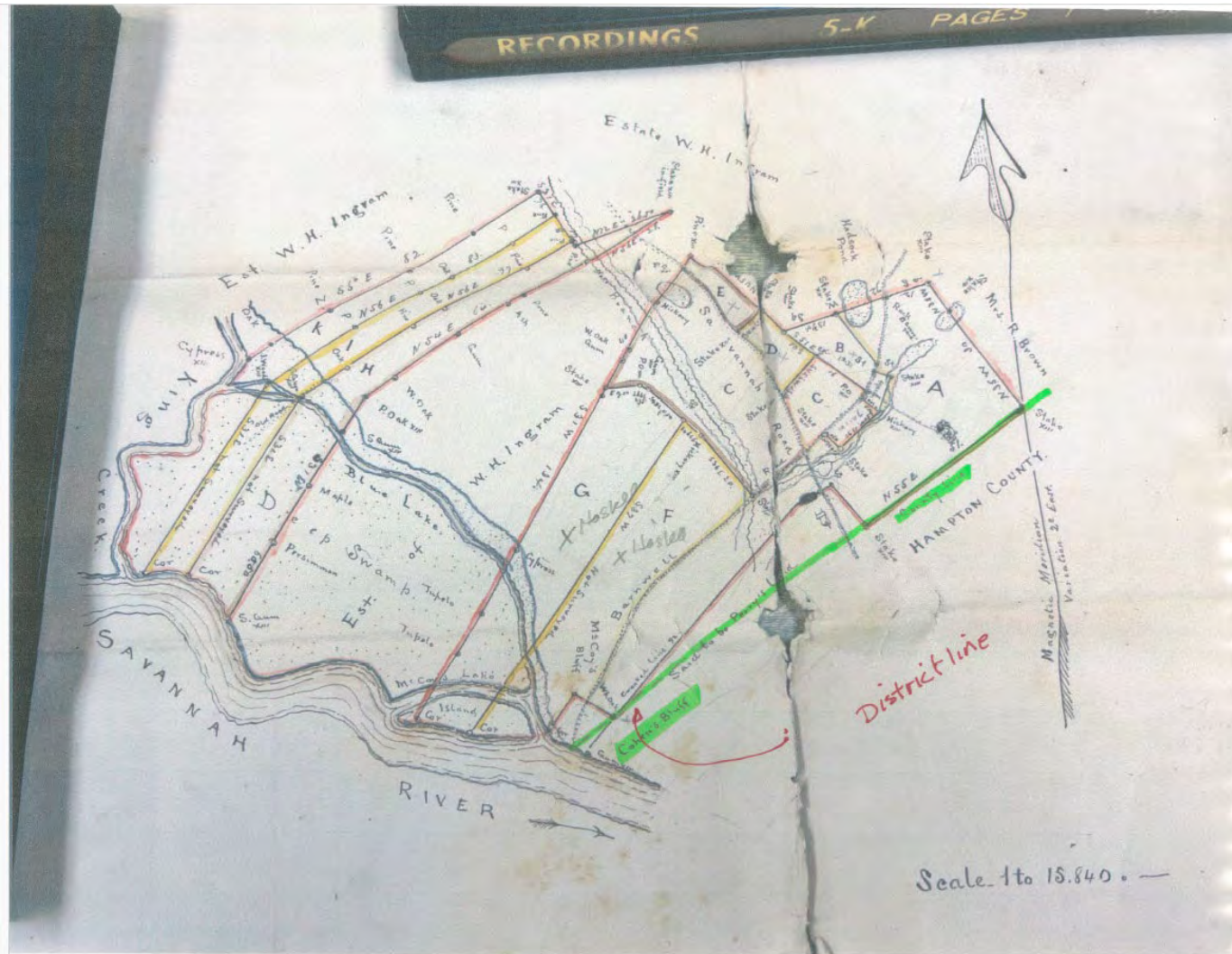
District  
Line





South Carolina 1795 From the United States Gazetteer Containing an Authentic Description of the Several States Joseph Scott www.old-maps.com





20

Original located in Barnwell County Judgement  
roll Bundle 106, Roll 12  
Barnwell County Clerks Office





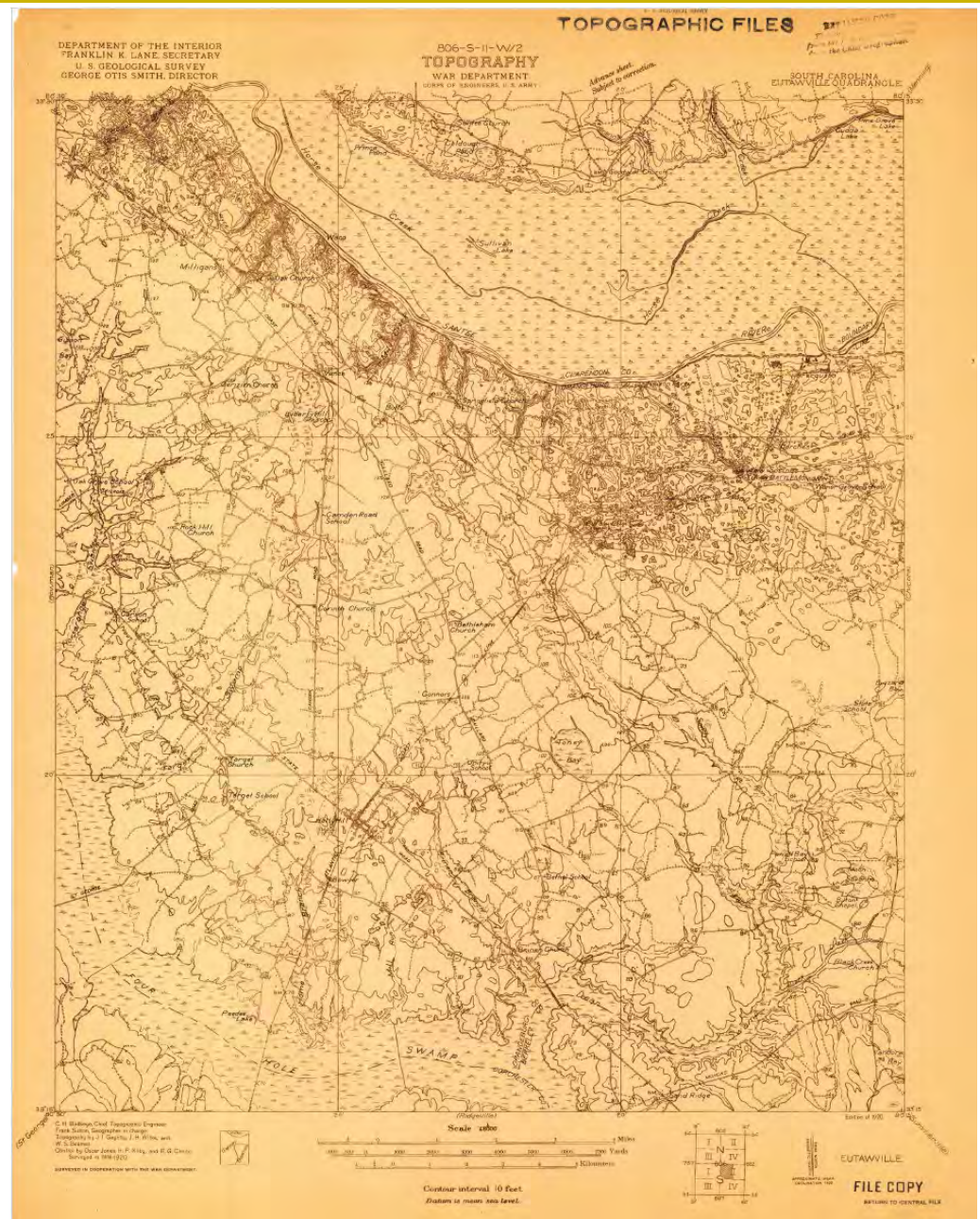


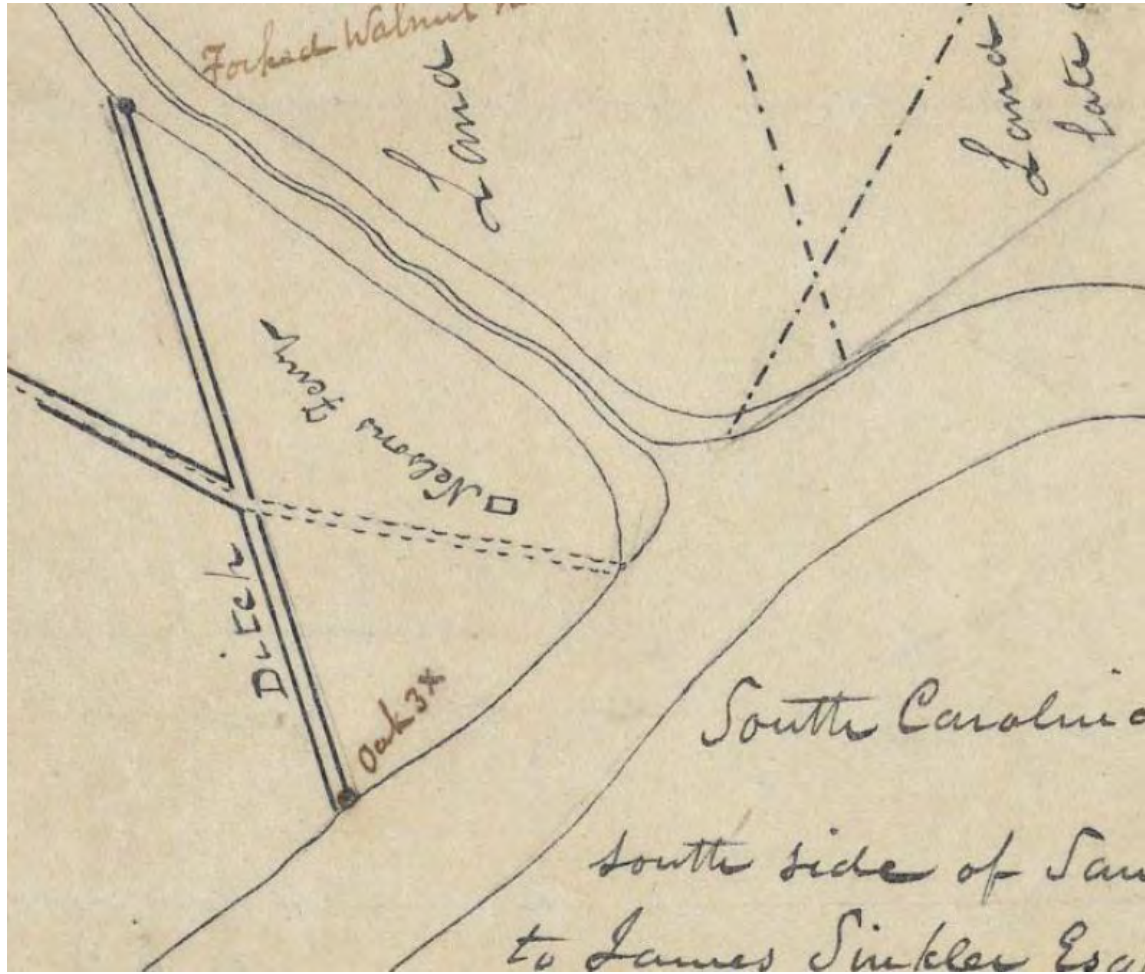
Mills Atlas of Charleston District surveyed 1820





USGS Quad map Eutawville, SC 1920





McCrady Plat of Belvedere Plantation, 1795



## **Change from District to Counties by the State Constitution, effective March 17, 1868**

In *The Constitution of the State of South Carolina with the Ordinances thereunto Appended* (Deny and Perry, Book and Job Printers, Charleston, 1868), p. 8 records that the legislature effective March 17, 1868, established a new constitution for the state and designated that all former districts were to be counties. This impacted Charleston, Colleton, Beaufort, Barnwell, and Orangeburg counties. There were no boundary changes.



**Lines are Established by Legislative Acts**

**South Carolina Code of Laws**

**Title 4 Counties Chapter 3**

**Boundaries of Existing Counties**



# Colleton County Boundary was defined in 1882

In the *General Statutes and the Code of Civil Procedure of the State of South Carolina* (James Woodrow, State Printer, Columbia, SC 1882), pp. 140 (Sec 414), states, the boundary of Colleton County on the northwest is:

“up the Four Holes Swamp, about fifteen miles to an intersection of the line drawn from **Nelson’s Ferry**, on Santee River, to **Mathew’s Bluff**, on Savannah River; on the northwest by Orangeburg and Barnwell Counties, from which it is divided by the old [district] line running (south 53 degrees west) from **Nelson’s Ferry** to **Mathew’s Bluff**, to where it intersects the Big Salkehatchie River, about two and one half miles above Bloxham’s Ford;”



## Creation of Bamberg County was effective in 1897

In *Acts and Joint Resolutions of the General Assembly passed at the regular session of 1897* (Charles A. Calvo State Printer, Columbia, SC, 1897), pp. 580-581. The legislature merely states that the boundary of Bamberg County on the southeast is the old district line defined as:

“to a point where the same is intersected by the line dividing the County of Barnwell from the County of Colleton; thence along said dividing line to where the same intersects with the Salkehatchie River;”

No mention of the old district line, but that is the line dividing Barnwell and Colleton Counties.

*The creation of Bamberg County out of Barnwell County eliminated Barnwell County from further discussion of the old district line.*



## Changes in the description of the county lines involving the Old District line in 1902.

In *Code of Laws of South Carolina in 1902* (The State Company, State Printers, Columbia, SC 1902). The following changes:

On page 228, the southeast boundary of Bamberg County is defined as:

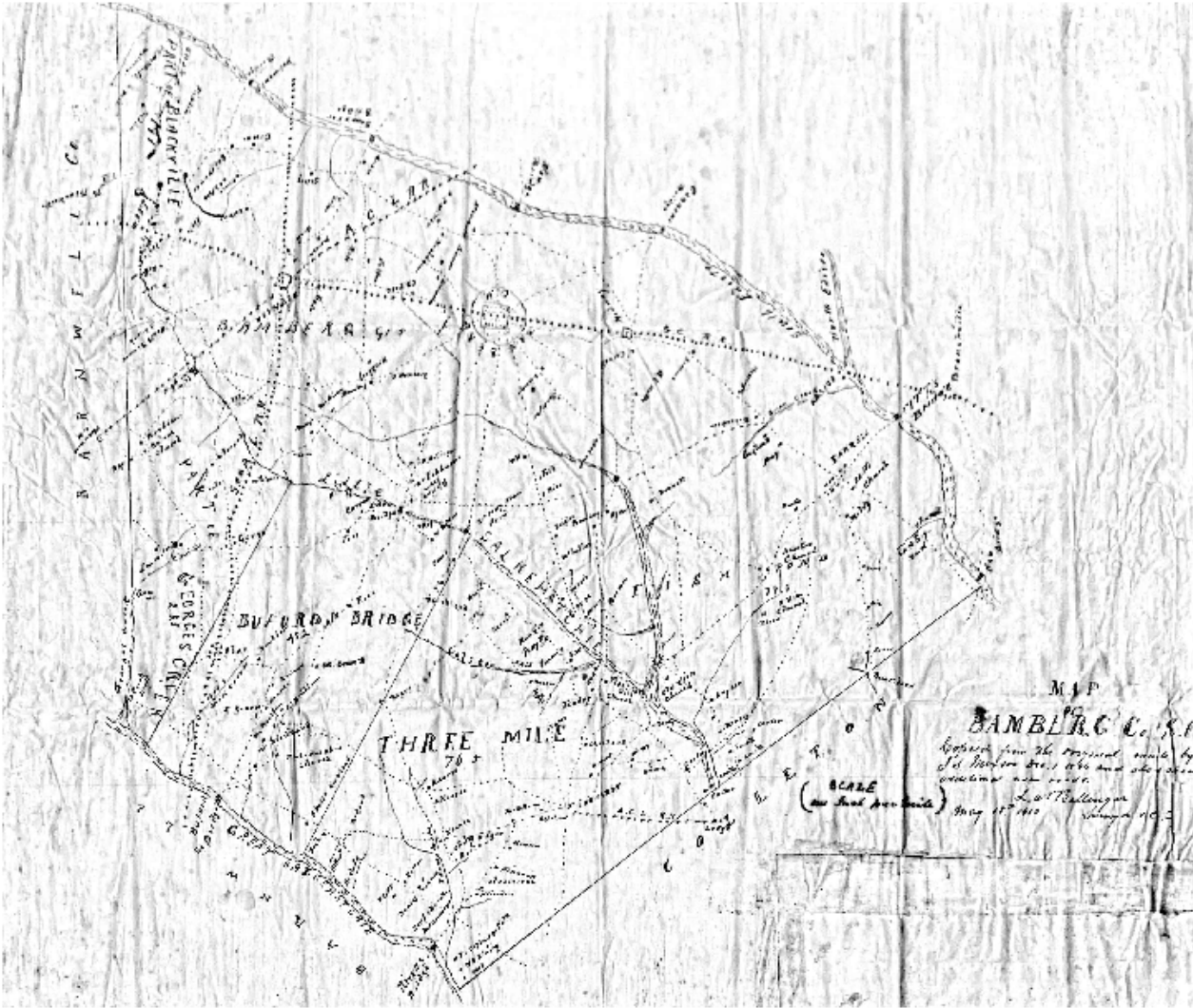
“thence down the middle of this stream of the latter river [Edisto] to the point where the same is intersected by the **old district line** dividing the county of Barnwell from the county of Colleton; thence along said dividing line to where the same intersects the Salkehatchie River;”

On page 232, the northwest boundary of Colleton County is defined as:

“on the northwest by Bamberg and Orangeburg Counties by which it is separated by the **old district line** drawn from **Nelson’s Ferry**, on the Santee River, to **Mathew’s Bluff**, on the Savannah River.”



# Reference Map of Bamberg County

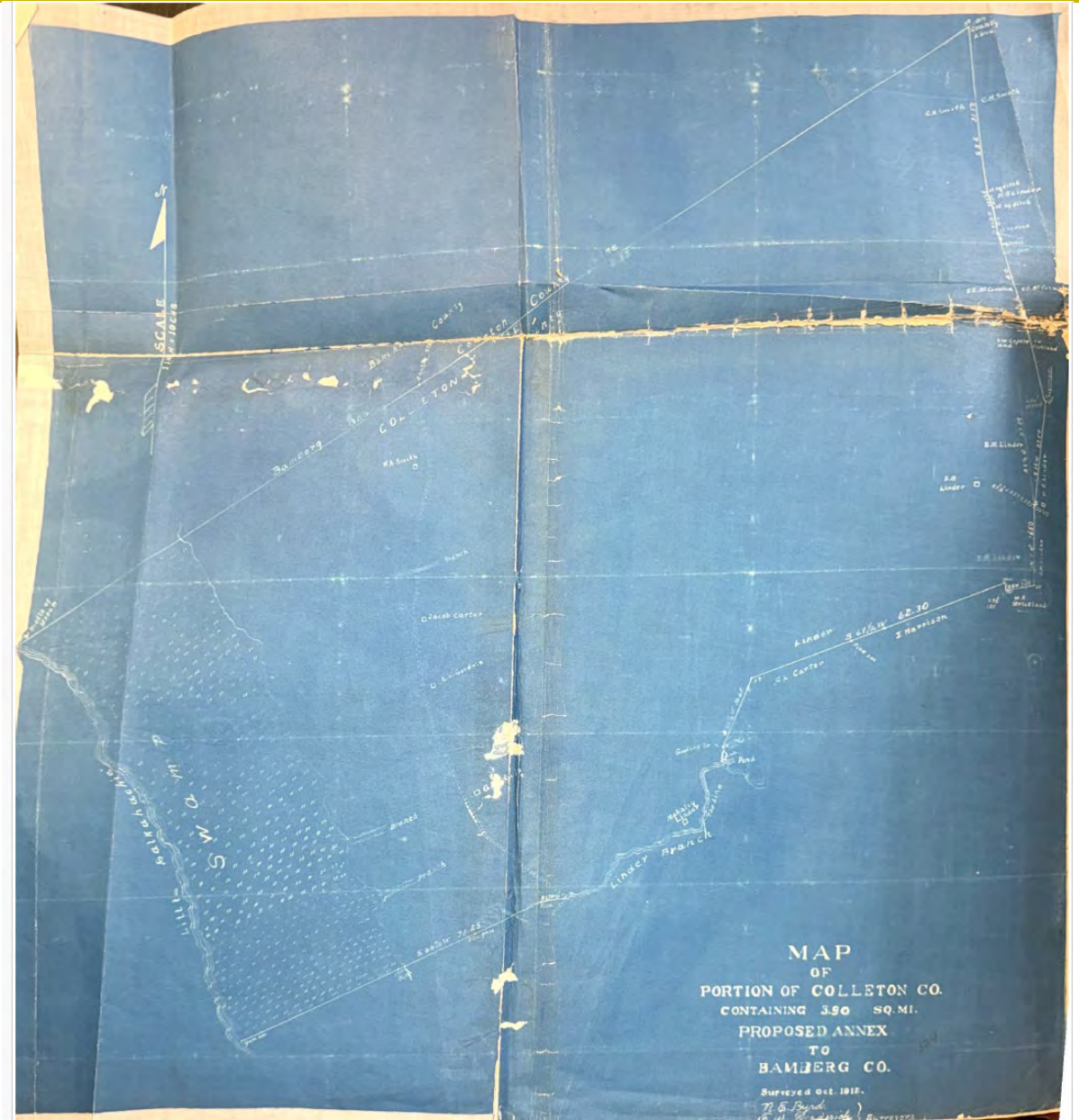
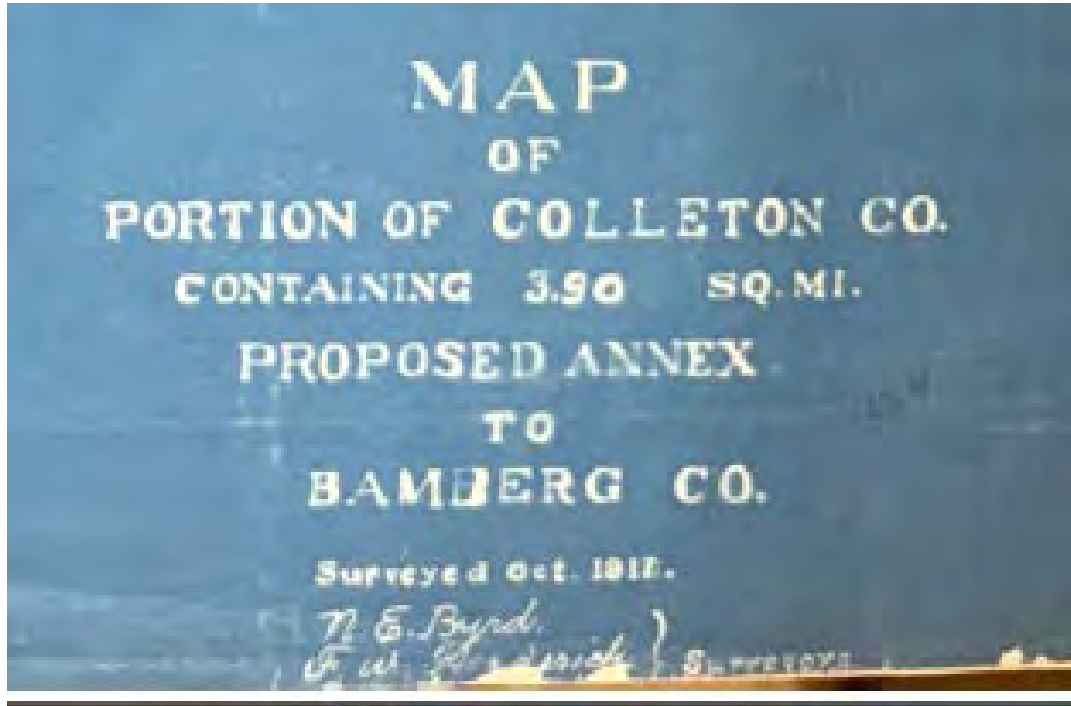


## **Movement of a portion of Colleton County into Bamberg County along the old district line, effective March 10, 1919.**

In *Acts and Resolutions of the General Columbia*, 1919, pp. 95-100, the legislature authorized the removal of:

“all that portion of the County of Colleton known as the northwestern portion of Warren Township, beginning where the line between where Bamberg county and Colleton county intersects the Little Salkehatchie River, thence running north fifty-eight degrees east [Mills says North 52 degrees East] for two hundred and fifty five chains (255) to stake marked XIII; thence south three degrees east for thirty-one and one half chains (31.5) to stake by ditch, this line passing through the property of C. H. Smith; thence south twenty-four and one half degrees east for four and one half chains to stake by ditch through the property of H. B. Linder and C. H. Smith; thence south six and one-fourth degrees east for six chains to stake by road passing between the property of H. B. Linder and C. H. Smith; thence south seventeen and one half degrees east for forty chains to stake, passing through the property of V. E. McCormack to fence, then through the property of S. W. Copeland; thence north seventy-two degrees west for sixty-two links to stake [believe it is supposed to be south seventy-two degrees east]; thence south eight and one half degrees west for twenty-seven and fifty-nine hundredths chains to stake by road, passing between the property of D. N. Linder and H. B. Linder; thence south one degree west for eighteen and one half chains to stake in edge of pond [plat says North 1 degree East], passing through the property of H. B. Linder, thence south eighty-one degrees west for seven and one half chains to stake at small branch, passing between land of H. B. Linder and W. A. Strickland; thence north eight degrees west for one and eight-five and one hundredths chains to gum marked XIII, passing between land of D. H. Linder and W. A. Strickland; thence south sixty-nine and one half degrees west for sixty-two and thirty one hundredths chains to stake, passing between lands of J. Z. Harrison, D. M. Linder, A. L. Carter and estate of Jacob Linder, the corner between Harrison and Carter being a large pine twenty six and eighty five one hundredths chains from corner which traveling; thence south twenty-two and one half degrees west for sixteen and sixty-five hundredths chains to a stump hole; then south twelve degrees east to pine marked XIII by edge of branch; thence following Linder Branch to where it crosses Bamberg to Walterboro highway; thence south eighty-three degrees west 6 chains to a pine marked XIII; thence south sixty-six and one-half degree west for seventy four and one fourth chains to a gum marked XIII at the run of Little Salkehatchie River; thence up the run of said river, following it in its different courses until corner from which the survey commenced, it also being the old Colleton and Bamberg county line [**old district line**]. That the territory taken from Colleton county and to be added to and incorporated into Bamberg county contains by actual survey three and nine tenths (3.9) square miles.”



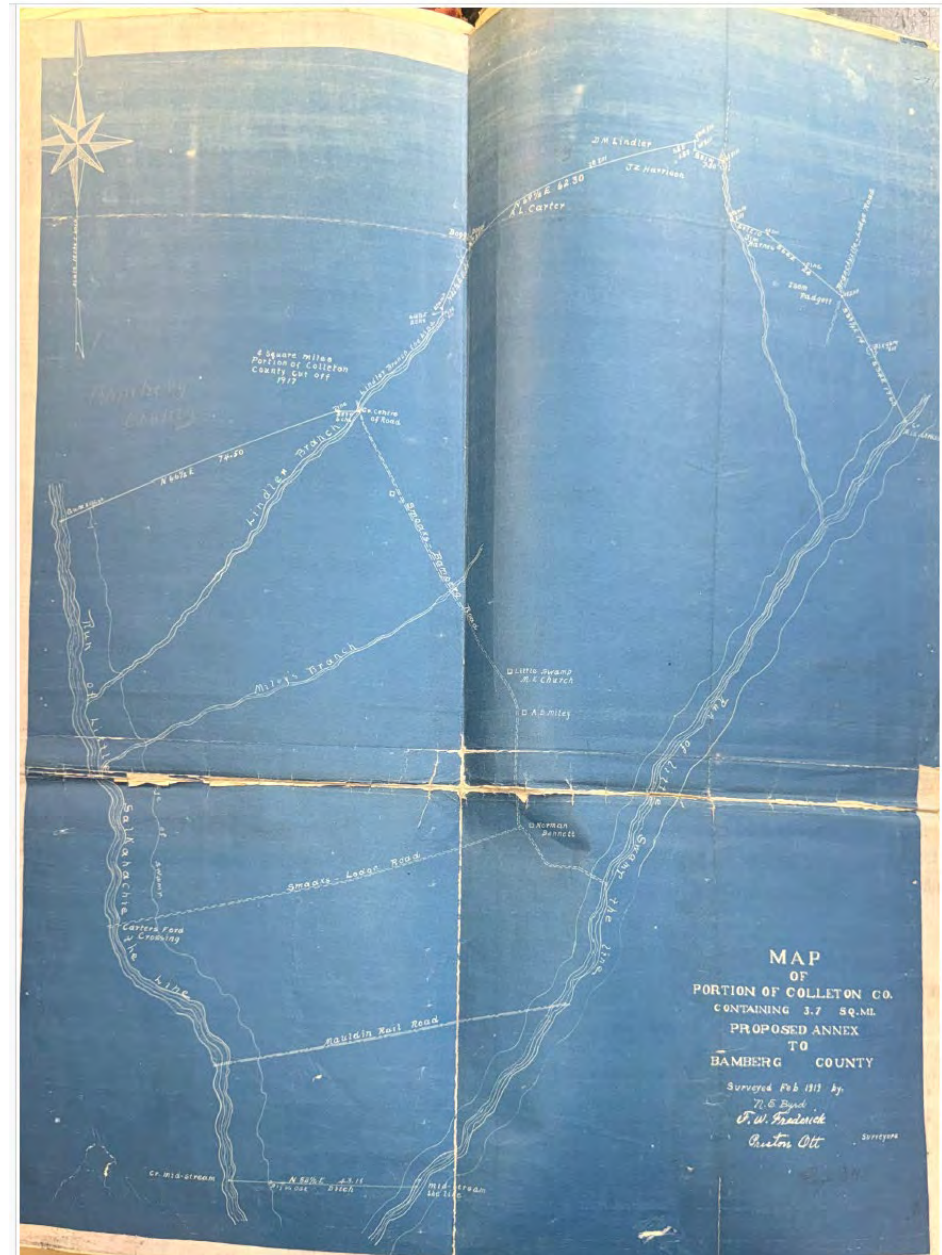


## **Movement of an additional portion of Colleton County into Bamberg County along the old district line, 1920**

In *Acts and Resolutions of the General Assembly of South Carolina passed at the regular session of 1920* (Gonzales and Bryan, State Printers, Columbia, 1920), pp. 773, the legislature authorized the removal of another portion of Colleton County and placed in Bamberg County. It defined the area being moved as:

“All of that portion of the county of Colleton known as the northwestern portion of Warren Township, beginning where the line between Bamberg county and Colleton county intersects at the Little Salkehatchie River, as established by a survey made in 1918 when a portion of Colleton county was annexed to Bamberg county, and marked by a gum tree XIII ; thence N. 62 E., 74.54 chains to pine marked XIII ; thence N. 83 E., 6 chains to center of Smoaks-Bamberg road where it crosses the Linder Branch; thence following the Linder Branch to a pine at the run marked XIII ; thence N. 12½ W. , 2 chains to stump marked XIII ; thence N. 22½ E., 16.05 chains to stake marked XIII in Boggy Pond; thence N. 69½ E., 62.30 chains, passing between land of Linder estate and A. L. Carter, and land of D. M. Linder and J. Z. Harrison to gum marked XIII at small branch ; thence S. 8 E., 1.85 chains to stake marked XIII ; thence S. 81 W. , 7.50 chains to stake in Smith Branch marked XIII ; thence following the run of said branch to large gum marked XIII; thence S. 82 E, 10 chains to corner stake between James Barnes and Isham Padgett ; thence S. 64 E., 24 chains to stake marked XIII at Branchville-Lodge road ; thence S. 39.25 E., 14 chains to gum marked XIII at edge of small pond; thence S. 34 E., 17.60 chains to corner in stream of Little Swamp ; thence following down the run of Little Swamp following it in its devious courses, crossing the Smoaks-Bamberg road and the Mauldin Railroad, to stake marked XIII in midstream; thence N. 82.5 E., 43.18 chains, following old ditch line to stake marked XIII in midstream of Little Salkehatchie River ; thence up the same river following in its dubious courses, crossing the Mauldin Railroad and the Smoaks Lodge dirt road, to gum in midstream marked XIII , from whence survey was started. That the territory taken from Colleton county to be added to and be incorporated into Bamberg county contains by actual survey three and seven-tenths (3.7 ) square miles.”

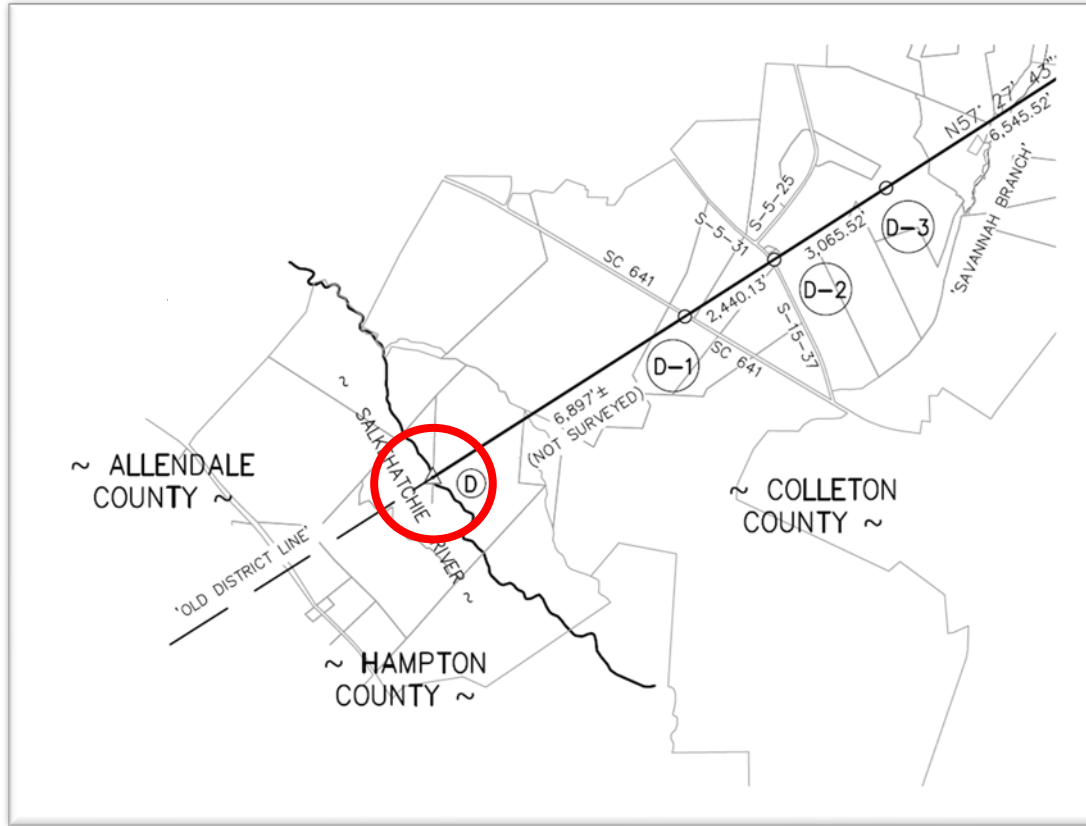








# Bamberg County / Colleton County Line Monument Monument D

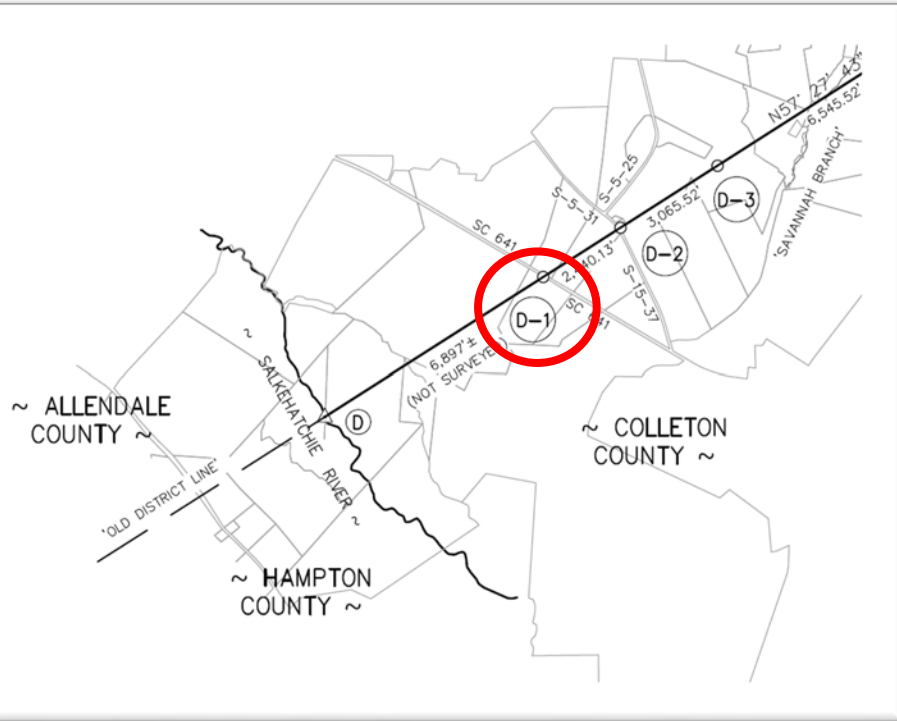


(Sheet 1 of 2)



Please note, this point on the county line is calculated

# Bamberg County / Colleton County Line Monument Monument D-1

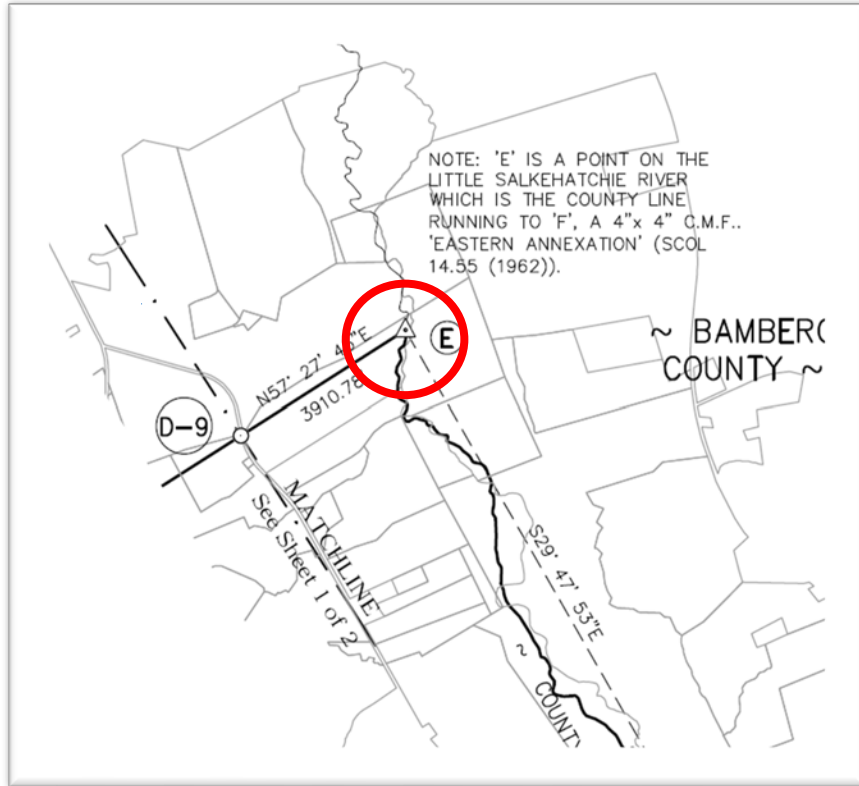


(Sheet 1 of 2)





# Bamberg County / Colleton County Line Monument Monument E



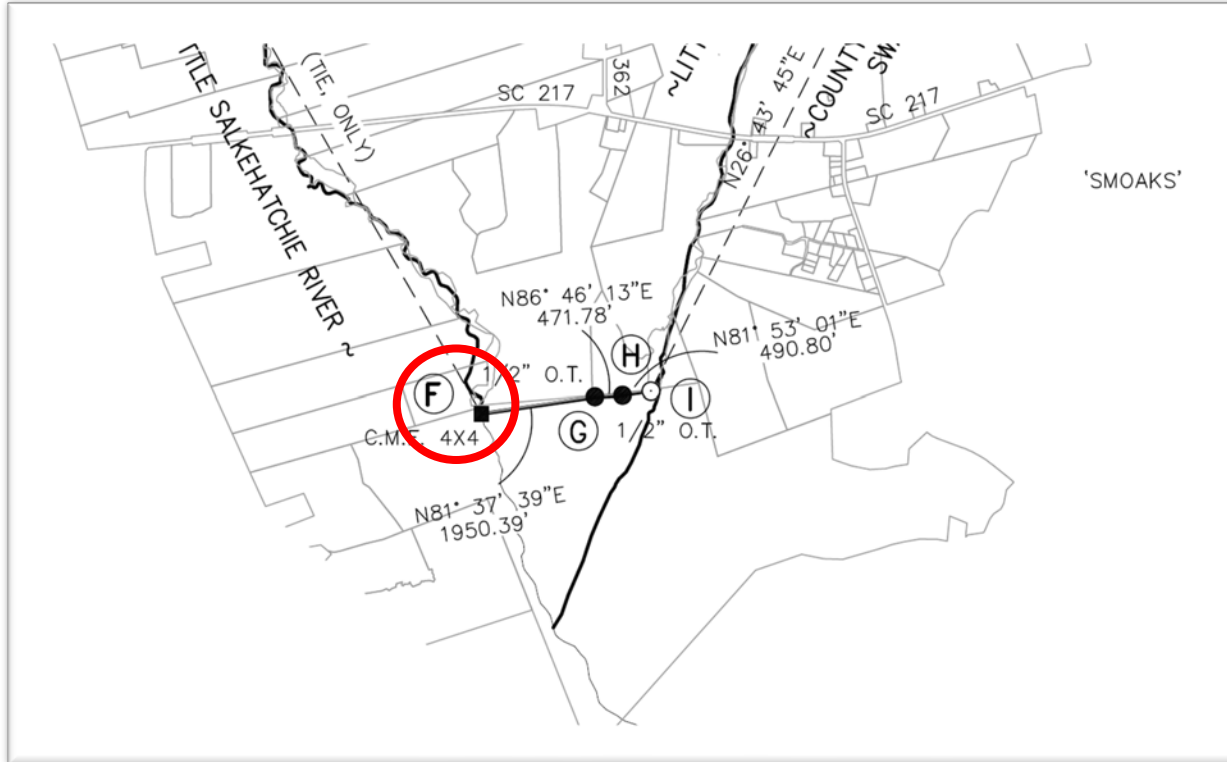
(Sheet 2 of 2)



Please note, this point on the county line is calculated



# Bamberg County / Colleton County Line Monument Monument F



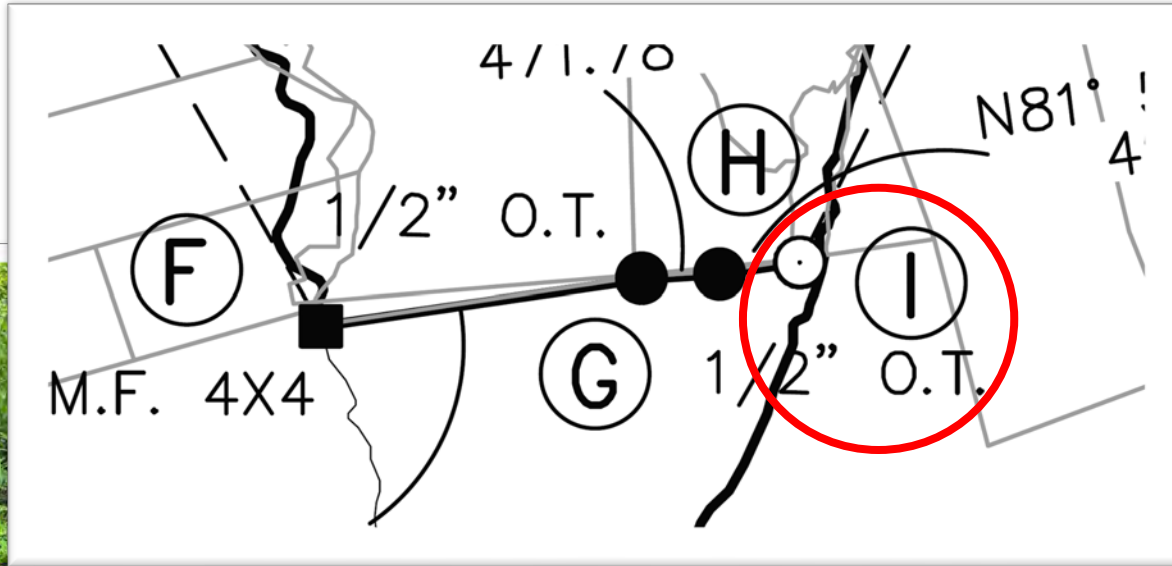
(Sheet 2 of 2)



Please note, this corner is an existing 4"x4" concrete monument.



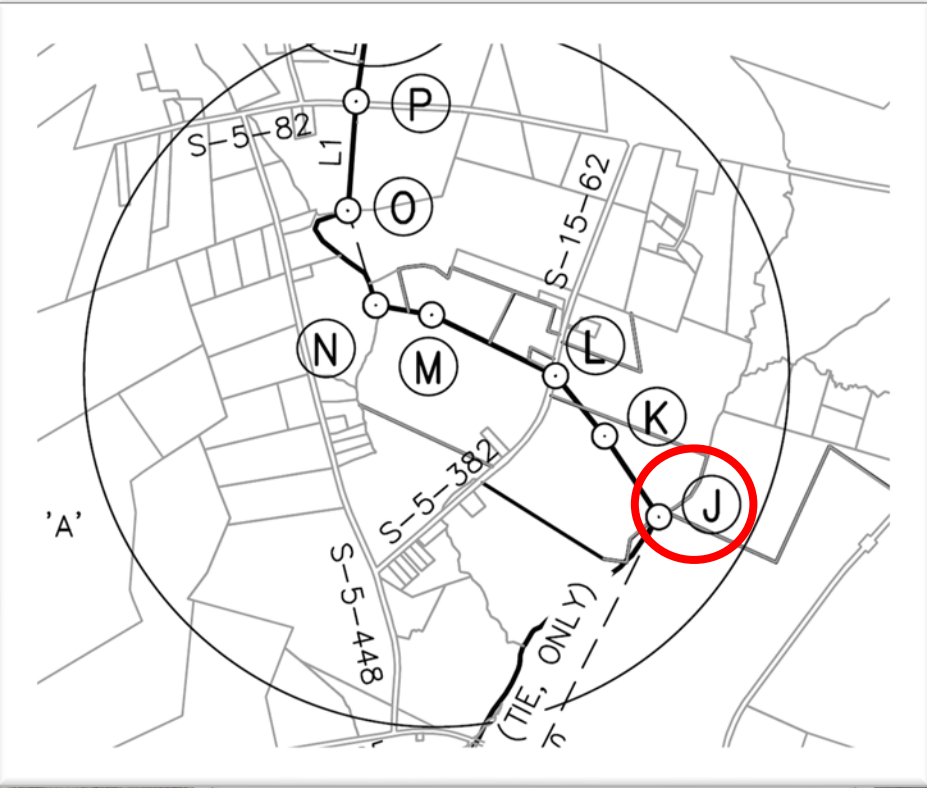
# Bamberg County / Colleton County Line Monument Monument I



(Sheet 2 of 2)



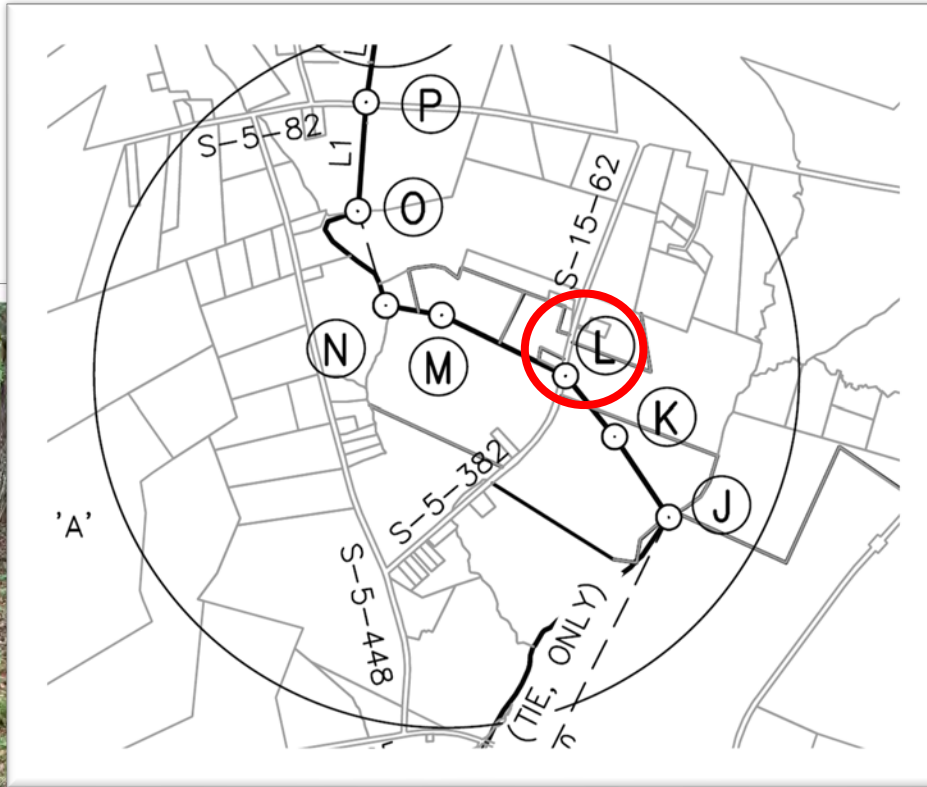
# Bamberg County / Colleton County Line Monument Monument J



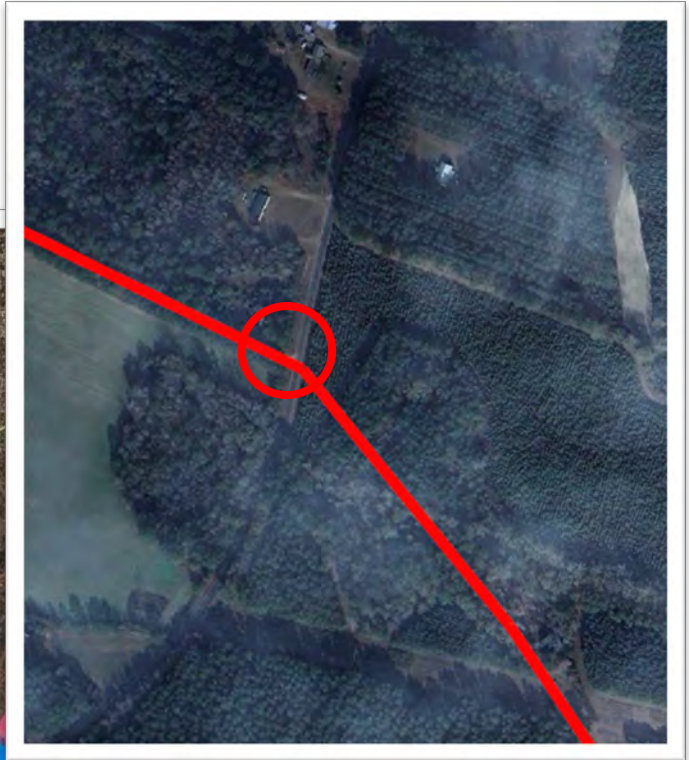
(Sheet 2 of 2)



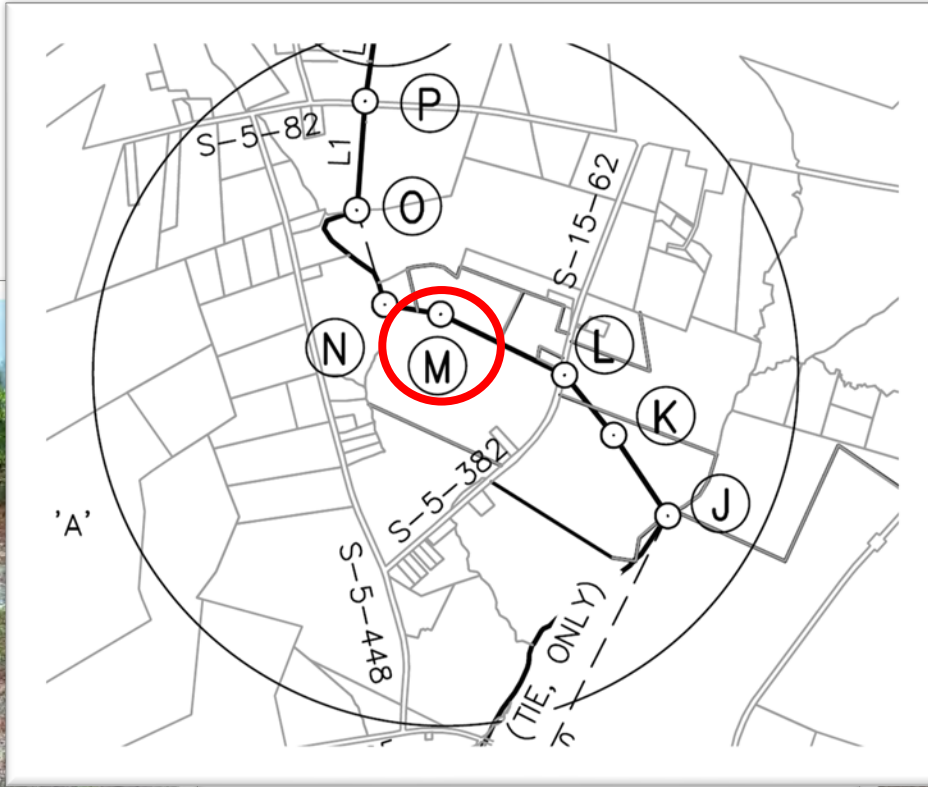
# Bamberg County / Colleton County Line Monument Monument L



(Sheet 2 of 2)



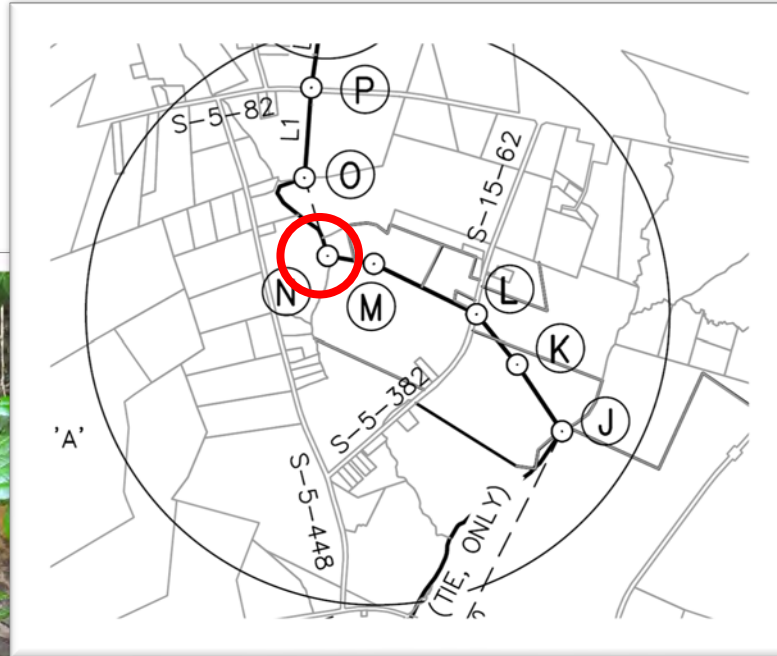
# Bamberg County / Colleton County Line Monument Monument M



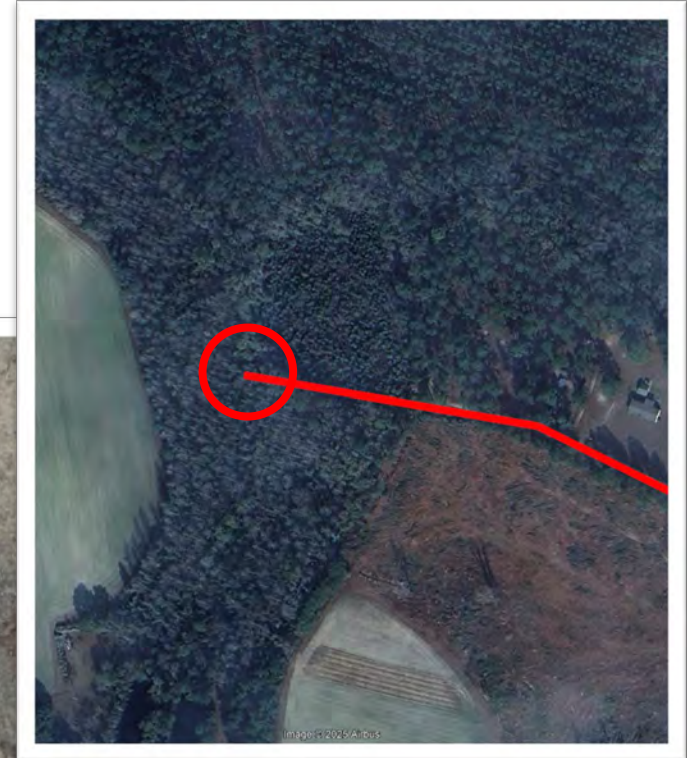
(Sheet 2 of 2)



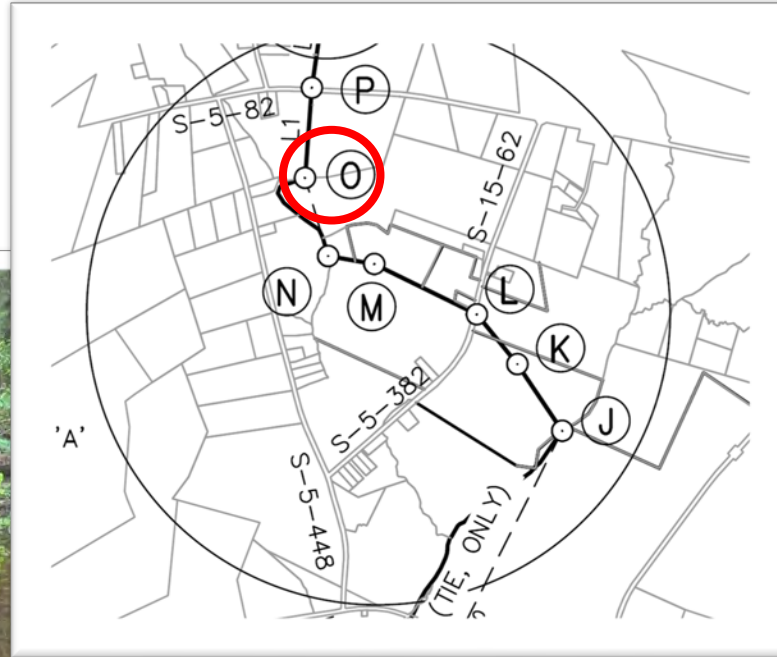
# Bamberg County / Colleton County Line Monument Monument N



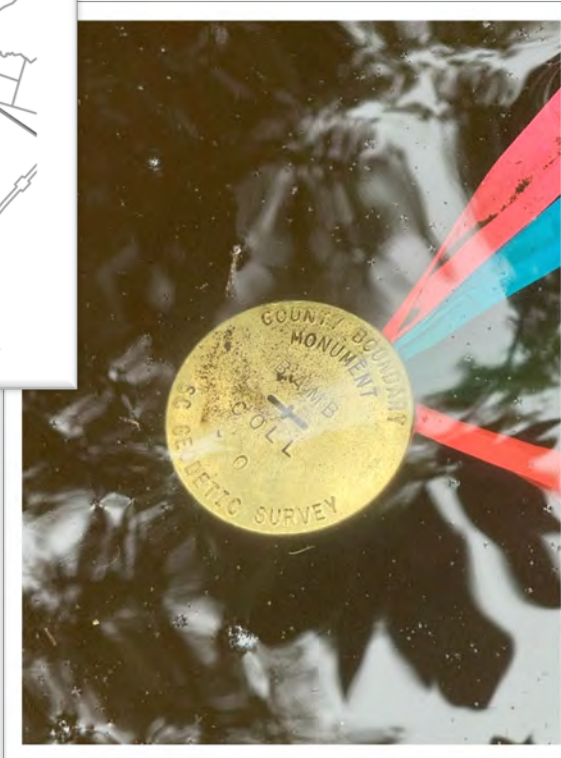
(Sheet 2 of 2)



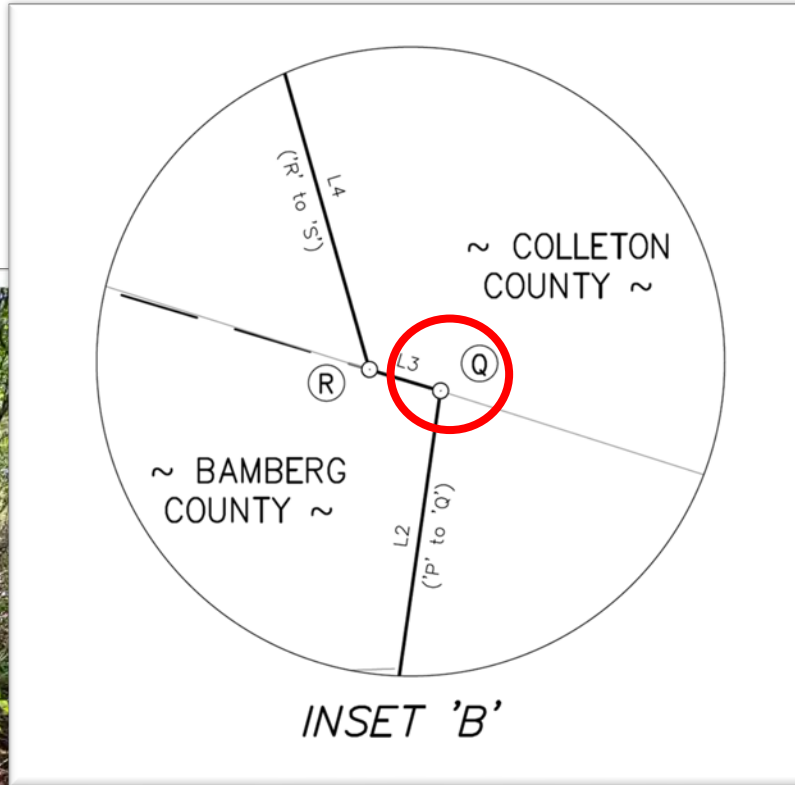
# Bamberg County / Colleton County Line Monument Monument O



(Sheet 2 of 2)



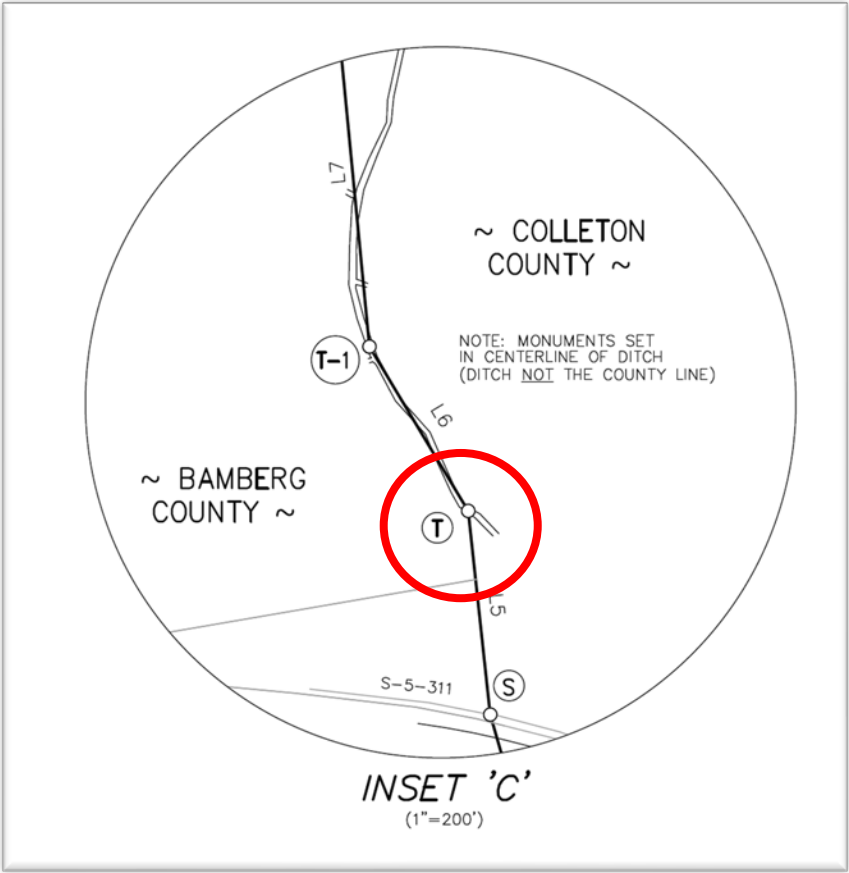
# Bamberg County / Colleton County Line Monument Monument Q



(Sheet 2 of 2)



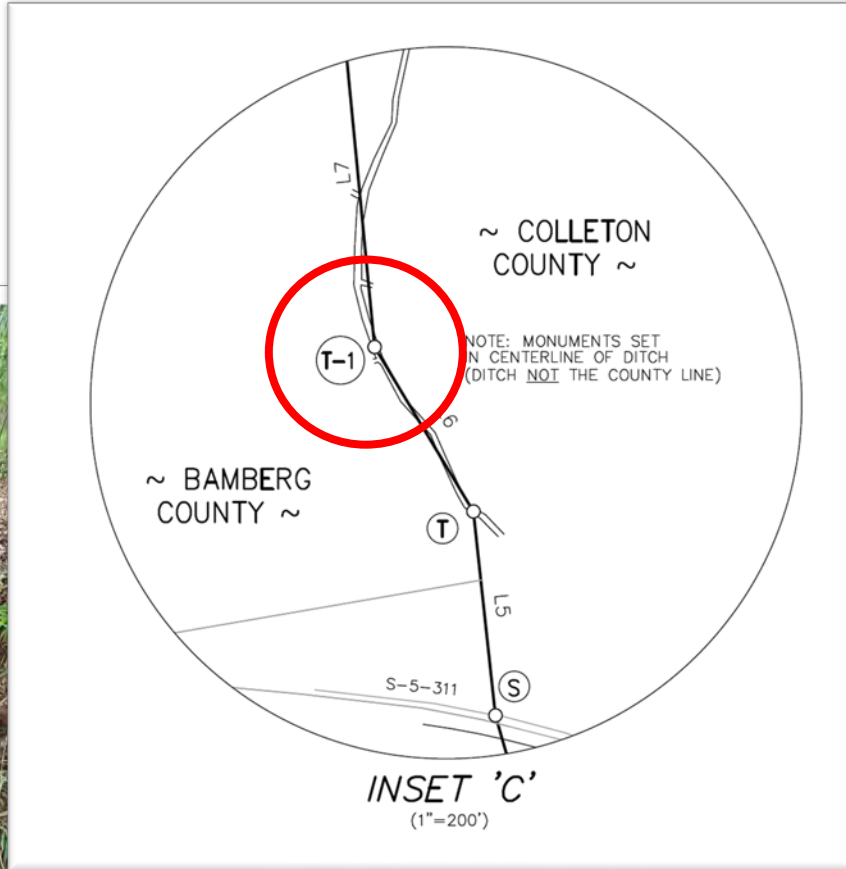
# Bamberg County / Colleton County Line Monument Monument T



(Sheet 2 of 2)



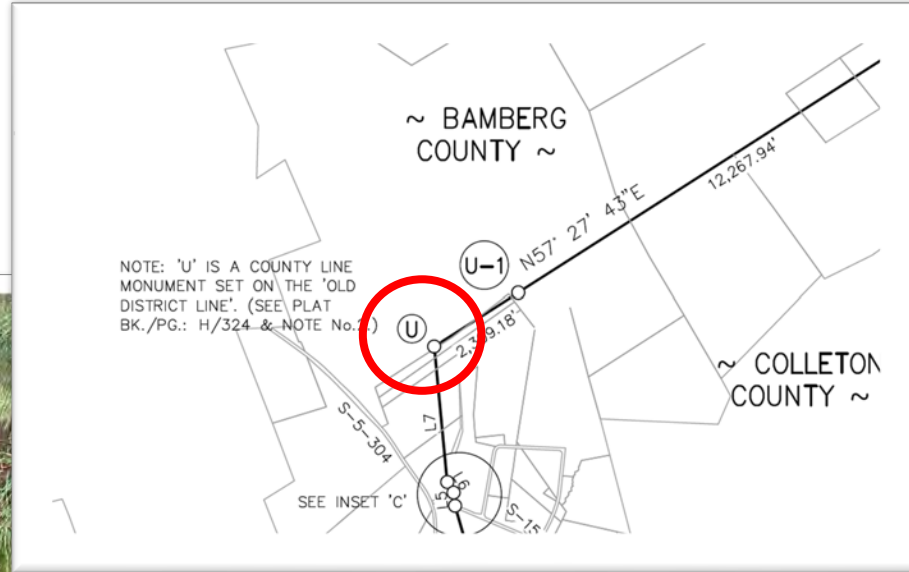
# Bamberg County / Colleton County Line Monument Monument T-1



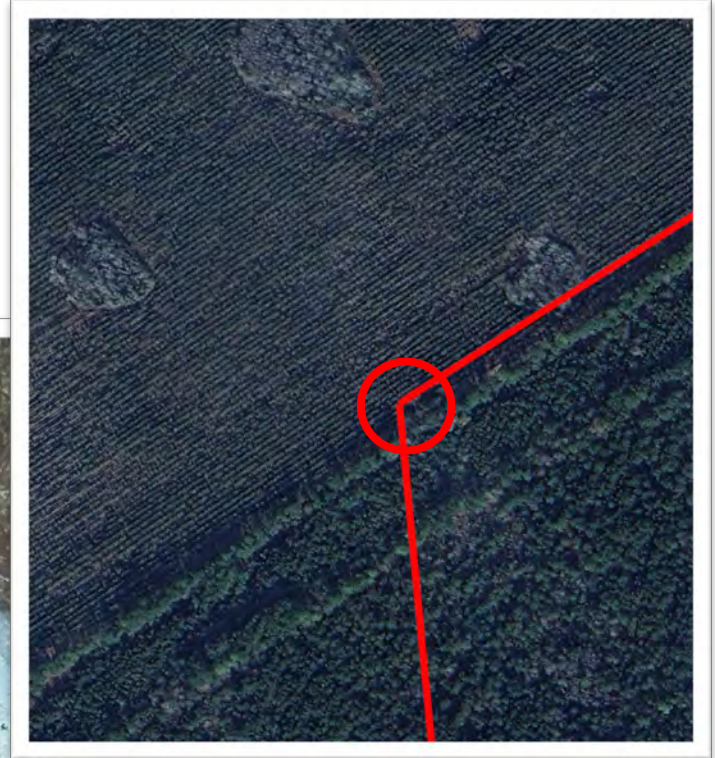
(Sheet 2 of 2)



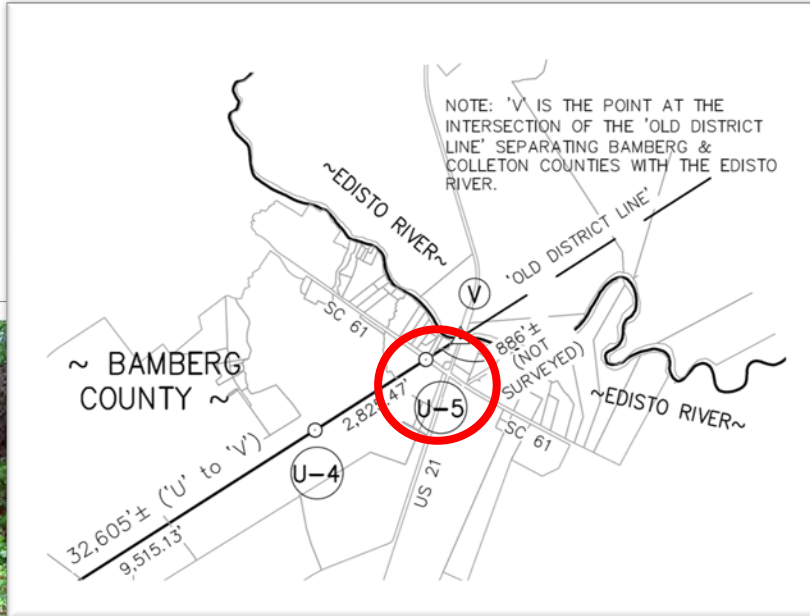
# Bamberg County / Colleton County Line Monument Monument U



(Sheet 2 of 2)



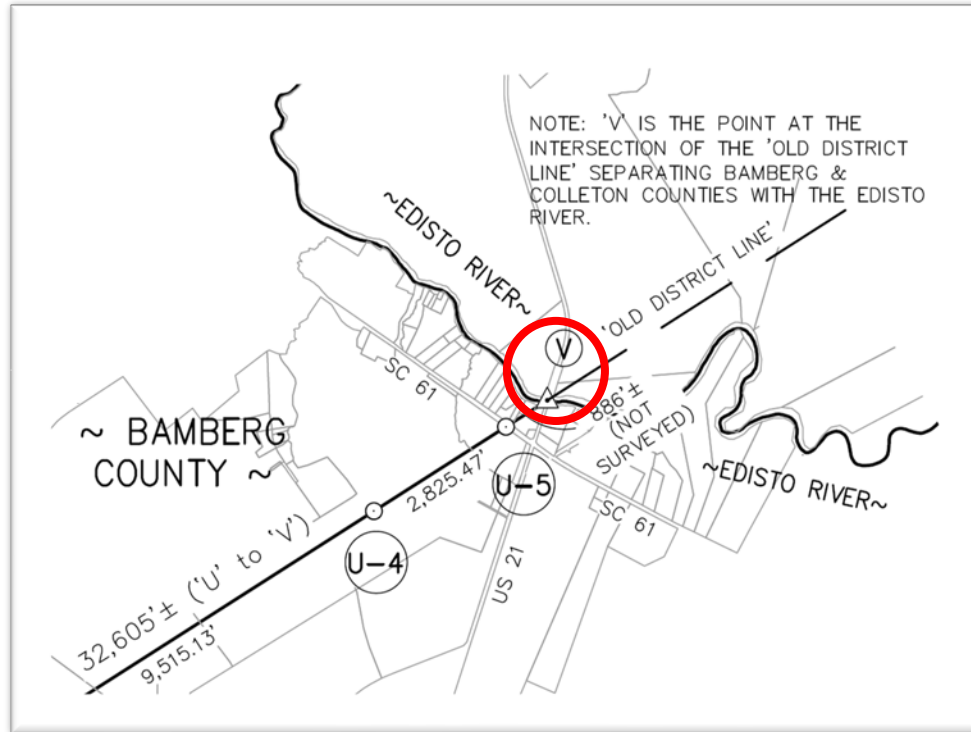
# Bamberg County / Colleton County Line Monument Monument U-5



(Sheet 2 of 2)



# Bamberg County / Colleton County Line Monument Monument V



(Sheet 2 of 2)



# Project Page:

<https://rfa.sc.gov/bamb-coll>

## QUESTIONS?

Or Information You Would Like to Provide?

PLEASE CALL: [803-734-3793](tel:803-734-3793)

or EMAIL: [boundary@rfa.sc.gov](mailto:boundary@rfa.sc.gov)

**We Will Work to Address Questions Promptly or Direct  
Questions to the Appropriate Agency or Jurisdictional Entity**

