



Dorchester – Orangeburg County Line



Jacob Braxton, PLS
County Boundary Program Manager
Revenue and Fiscal Affairs
SC Geodetic Survey

Overview

- Why is the SC Geodetic Survey the chosen agency
- Reason for boundary clarification
- The requirements and duties of the SC Geodetic Survey
- Explanation of our methods
- Boundary clarification procedure
- Legal process for individuals disagreeing with SCGS findings
- Statutory description of county boundary
- Research and findings
- Monumentation and Survey
- Conclusion



County Boundary Re-establishment Program

Why SC Geodetic Survey?

- Over the last 30+ years, the South Carolina Geodetic Survey has worked with South Carolina counties to help resolve ambiguities between county boundaries

SC Code of Law SECTION 27-2-105

- The General Assembly determined it necessary to re-survey the county boundaries of the state
- Act No. 262 of 2014: “so as to authorize and direct the SCGS to clarify county boundaries...”

WHY

- Passage of time and growth has led to confusion over statutory county descriptions and the locations of county boundary lines
- Exact and precise locations and boundaries of the State’s political subdivisions are critical for services, enforcement of property rights and election of public officials.
- Necessary for state government and political subdivisions
- Technology exists now to cost-effectively provide definite and permanent markers of boundary lines



Steps for Clarifying Boundaries

SC Code of Law SECTION 27-2-105 (A)(1)

- Requirements of SCGS:

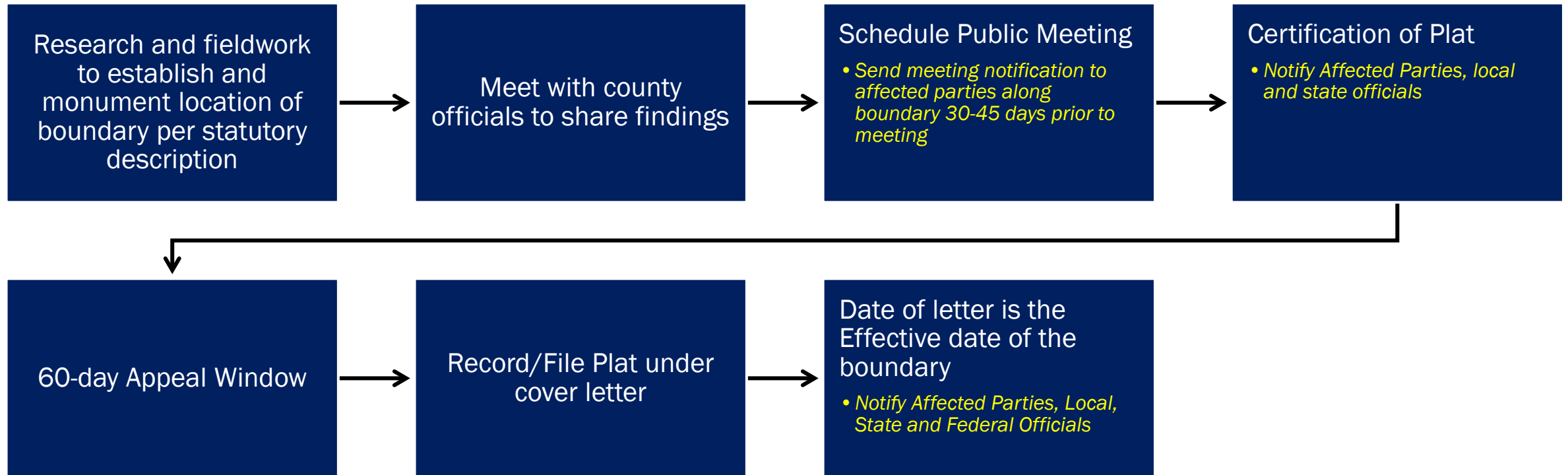
- Where county boundaries are ill-defined, unmarked, or poorly marked, the South Carolina Geodetic Survey on a cooperative basis shall assist counties in defining and monumenting the locations of county boundaries and positioning the monuments using geodetic surveys. The South Carolina Geodetic Survey (SCGS) shall seek to clarify the county boundaries as defined in Chapter 3, Title 4. The SCGS shall analyze archival and other evidence and perform field surveys geographically to position all county boundaries in accordance with statutory descriptions. Physical and descriptive points defining boundaries must be referenced using South Carolina State Plane Coordinates.

- Requirements of SCGS:

- Upon reestablishing county boundary, SCGS shall certify its work and within 30 days of certification:
- Provide copies to the administrator of each affected county; Provide written notification to affected parties
- Provide notice and copies to the public through its official website and or other means it considers appropriate; and
- Notify as it determines appropriate, other affected state and federal agencies
- (Initiates 60 Day Appeal Process)
- Certified Surveys submitted to Secretary of State, Register of Deeds Offices, and South Carolina Department of Archives with Cover Letter
- Date of the cover letter is the date the surveys become effective
- Introduce Legislation to update Code of Law to reflect clarified boundary with State Plane Coordinates



SCGS County Boundary Clarification Process



SC Code of Law SECTION 27-2-105 (B) (1)

- **Affected Parties Disagreeing with SCGS:**
 - May file request for a contested case hearing with the SC Administrative Law Court
 - This decision may be appealed
 - **“Affected Party”**
 - Governing body of an affected county
 - Governing body of a political subdivision of this State
 - An elected official, other than a statewide elected official
 - A property owner or an individual residing in the certification zone
 - A business entity located in the certification zone
 - A nonresident individual who owns or leases real property situated in the certification zone



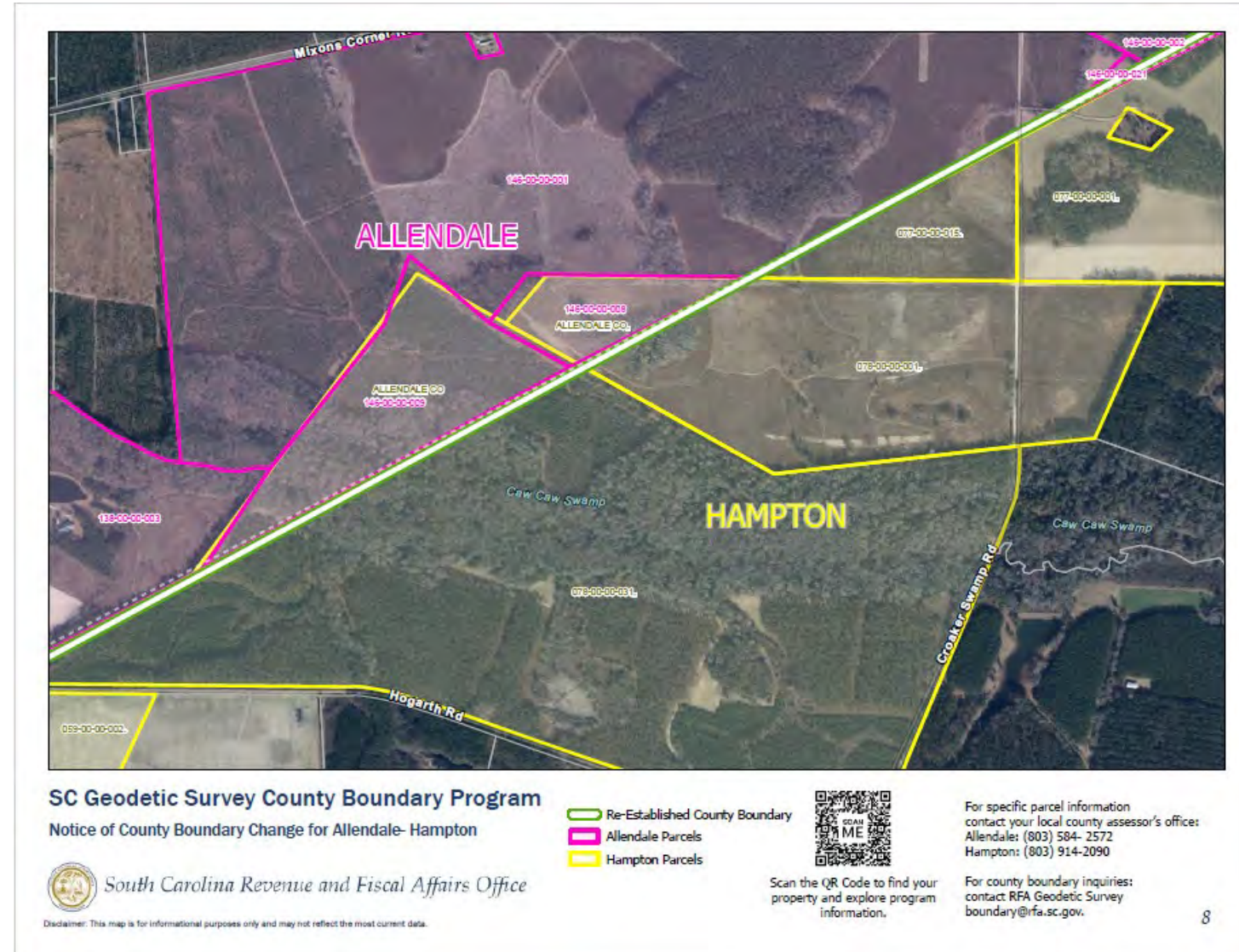
Public Meeting Notification (Example)

- Every Property Owner along the boundary line is notified
- 1st notification informing of public meeting
- 2nd notification informing of certification of work and 60-day appeal window
- 3rd notification informing of project completion



Public Meeting Notification (Example)

- Maps are sent with the 1st notification letting
- Showing County Parcel layers with the Re-established County boundary line overlaid



SURVEY REPORT



From a point in the
Edisto River
at the
Bamberg – Colleton County Line
to a point in
Four-Hole Swamp
at the
Orangeburg County Line





Lines are Established by Legislative Acts

South Carolina Code of Laws

Title 4 Counties Chapter 3

Boundaries of Existing Counties

however

This Line existed before the SC Legislature



Portions of this line were originally created as a District Line in 1768

Creation of the Old District Line, 1768. In the *Statutes at Large of South Carolina*, editor, David J. McCord, Vol. 7 of 10 volumes, (A.S. Johnston, Columbia, SC, 1840), page 199, the Colonial House of Representatives of South Carolina on April 12, 1768, agreed on a district line dividing Charleston and Beaufort Districts from that of Orangeburg (copy attached). Specifically, it says that Charleston precinct [or district] for courts would be established in the west by:

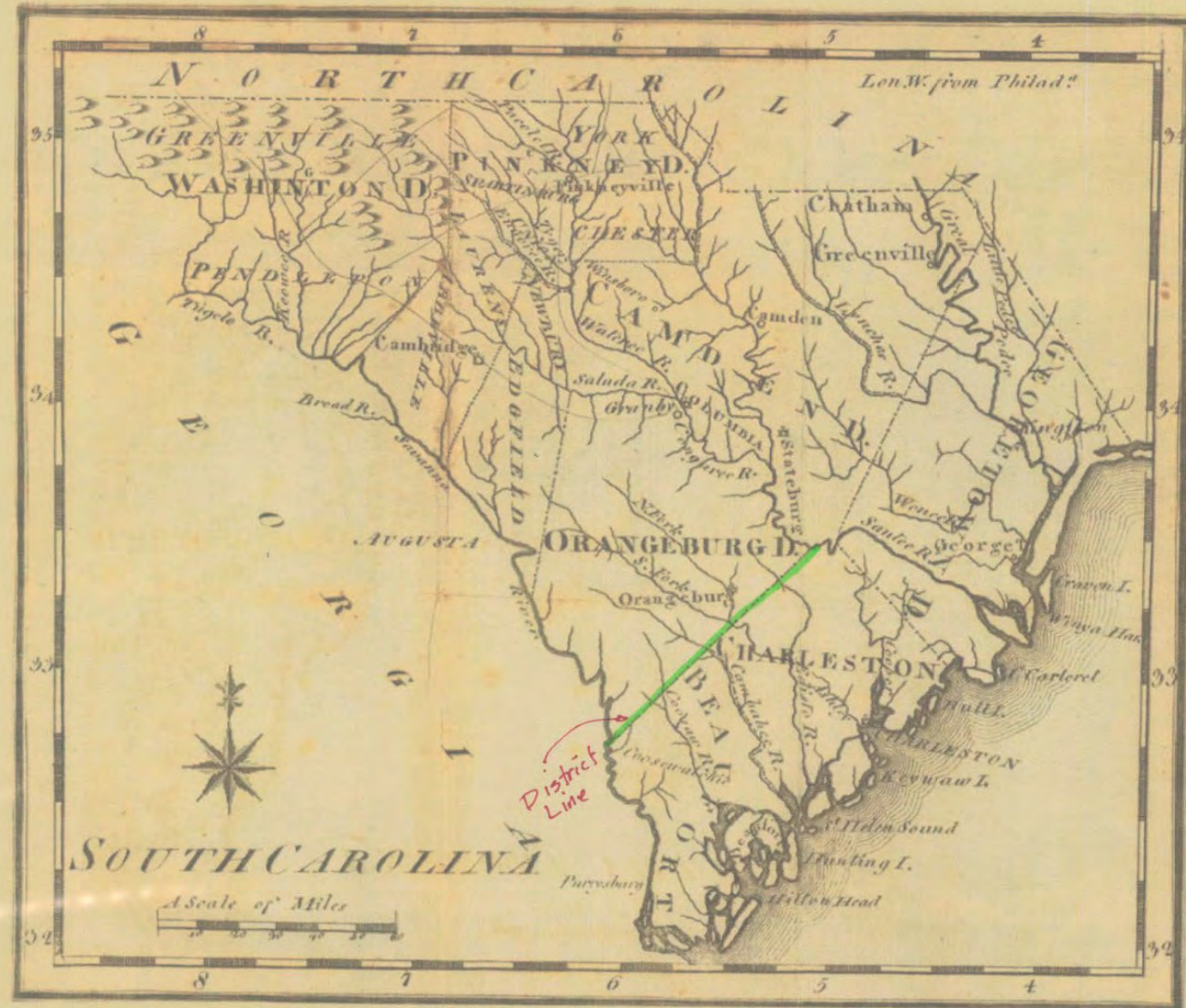
“a line drawn from **Nelson’s Ferry** [or Neilson’s] [on the Santee River] **directly to Mathew’s Bluff**, on Savannah River. . .” it goes on to establish the Beaufort Precinct or District along the “said line, to be continued from the main swamp aforesaid [marking the end of Charleston District], to Mathew’s Bluff, on Savannah River.” Furthermore, it established Orangeburgh’s southeastern line along, “said line from Nelson’s Ferry to Mathew’s Bluff.”



**First State map showing the
line, 1775.
Henry Mouzon and Other's
map of South and North
Carolina,**

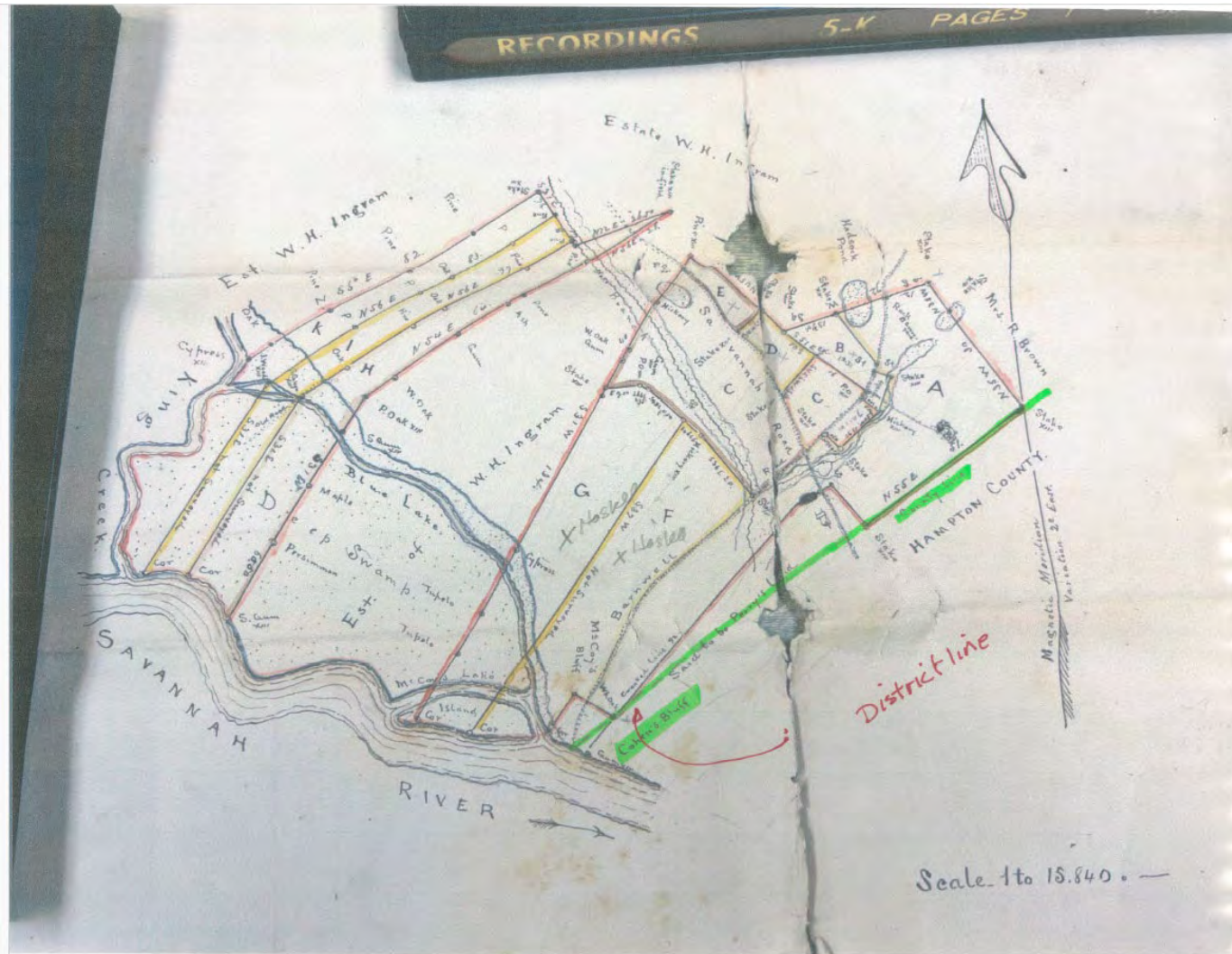






South Carolina 1795 From the United States Gazetteer Containing an Authentic Description of the Several States Joseph Scott www.old-maps.com



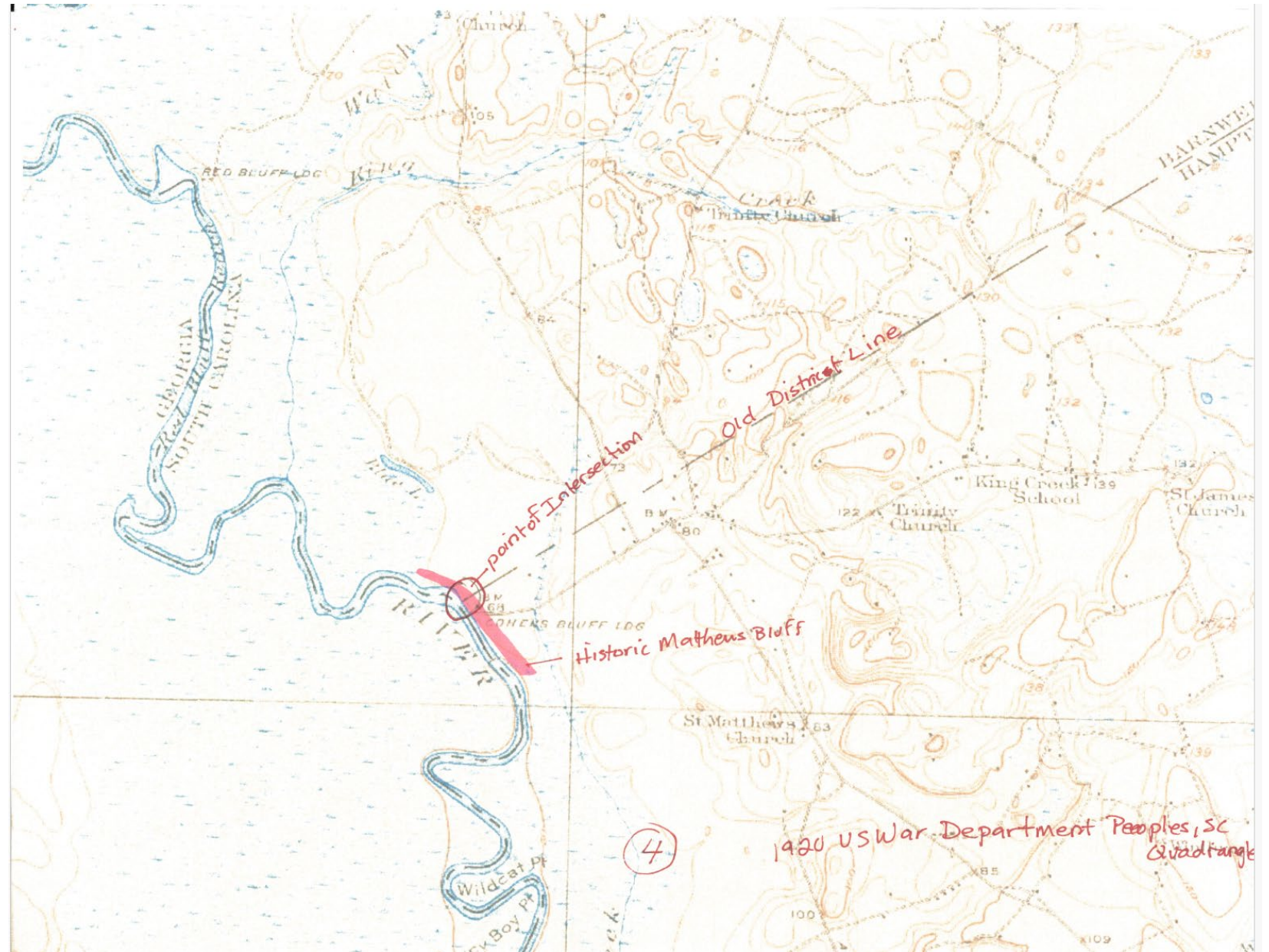


(20)

Original located in Barnwell County Judgement
roll Bundle 106, Roll 12
Barnwell County Clerks Office



Matthews or Cohens Bluff

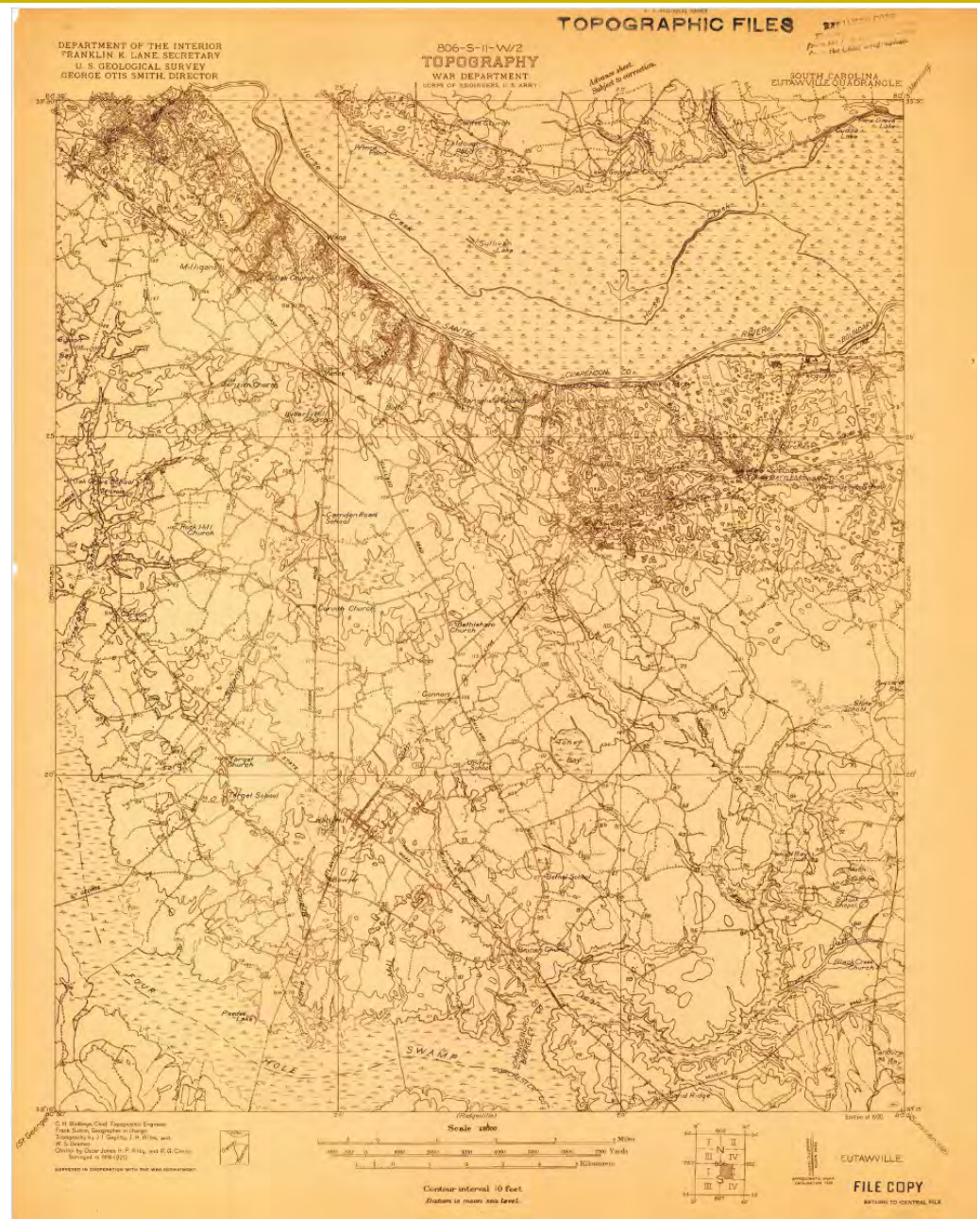


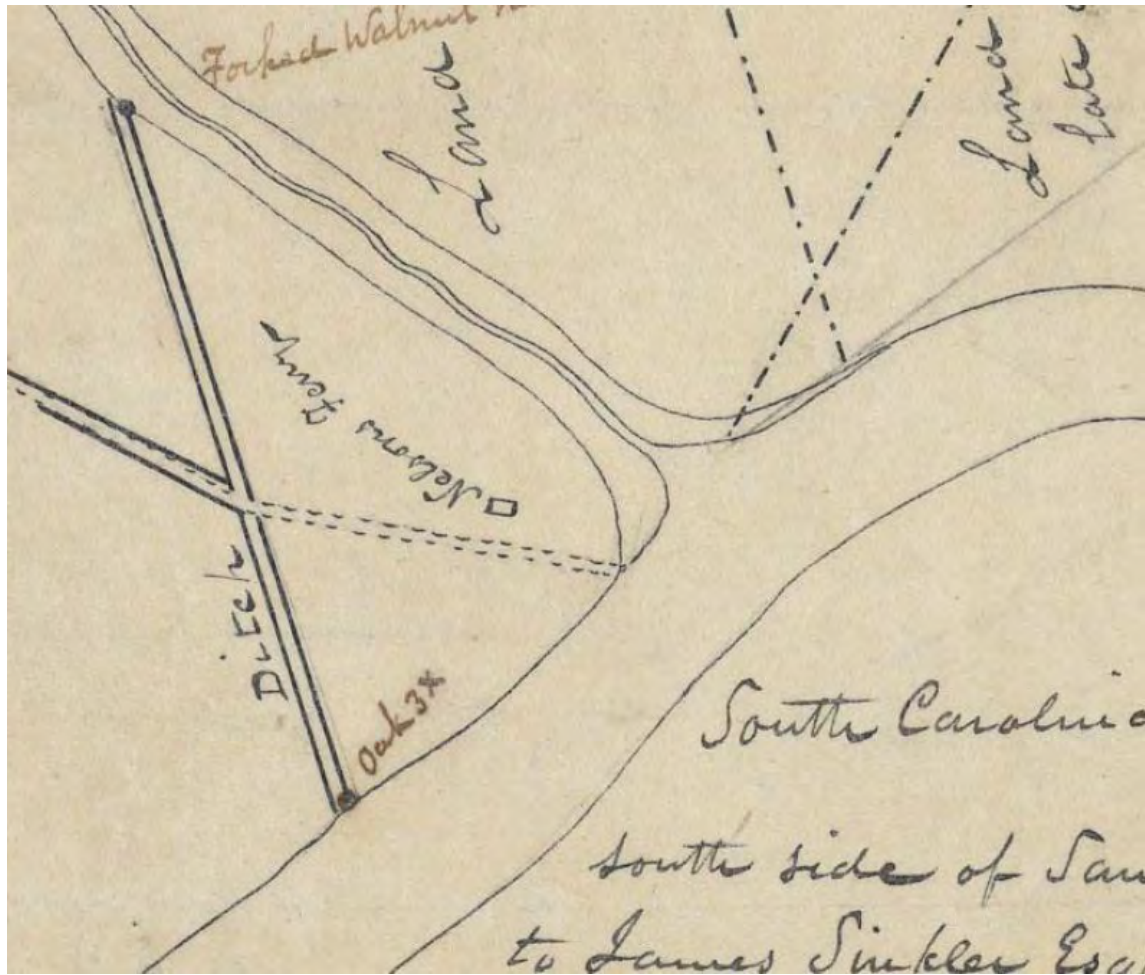


Mills Atlas of Charleston District surveyed 1820



USGS Quad map Eutawville, SC 1920





McCrary Plat of Belvedere Plantation, 1795



Change from District to Counties by the State Constitution, effective March 17, 1868

In *The Constitution of the State of South Carolina with the Ordinances thereunto Appended* (Deny and Perry, Book and Job Printers, Charleston, 1868), p. 8 records that the legislature effective March 17, 1868, established a new constitution for the state and designated that all former districts were to be counties. This impacted Charleston, Colleton, Beaufort, Barnwell, and Orangeburg counties. There were no boundary changes.



Creation of Berkeley County was effective November 1, 1881

- It was authorized on January 31, 1882. *Acts and Resolutions of the General Assembly of South Carolina Acts, 1881-82, no. 527, sections 1-4/14/ pp. 682-684*
- It states that the boundary is: “north also by Orangeburg; west, northwestwardly, and west by Colleton County.”
- No mention of the old district line but it forms the boundary of Orangeburg and the new Berkeley County. Changes to the county in 1893, 1896, and 1897 did not effect the Orangeburg/Berkeley County line. It remained the old district line. The creation of Berkeley County eliminated Charleston County from further discussion of the old district line.



Lines are Established by Legislative Acts

South Carolina Code of Laws, Title 4 Counties
Chapter 3 Boundaries of Existing Counties



Creation of Dorchester County effective February 25, 1897

In *Acts and Joint Resolutions of the General Assembly passed at the regular session of 1897*, (Charles C. Calvo, Jr. State Printer, Columbia, SC ,1897), pp. 595-603. On p. 595 the 228 description of the new county does not mention the old district line specifically but only the townships in Colleton being transferred to Dorchester and a portion of Berkeley County being transferred. The northwest boundary of St. George's Parish was the **old district line** and that remains the county boundary



Changes in the description of the county lines involving the Old District line in 1902.

In *Code of Laws of South Carolina in 1902* (The State Company, State Printers, Columbia, SC 1902). The following changes:

On page 229, there is no change in the Berkeley County/Orangeburg County line description. That boundary is the old district line.

On page 233 the northwest boundary of Dorchester County is defined as beginning at a point at the intersection of the Edisto River and: “the **old district line** drawn from **Nelson’s Ferry** on [sic.] **Mathew’s Bluff**; on the Northwest by Orangeburg County, from which it is separated by said last mentioned district line.”

On page 240 the southwest boundary of Orangeburg County is defined as: “on the southwest by Berkeley and Colleton Counties, from which it is divided by a line drawn (south 52 degrees west) from **Nelson’s Ferry**, on the Santee River, to **Mathew’s Bluff**, on the Savannah River;”



Changes in the description of the county lines involving the old district line in 1912.

In *Code of Laws of South Carolina in 1912* (the Mitchie Company, Charlottesville, Va., 1912), the Code made the following changes to the previous boundary descriptions: **The legislature moved the boundary between Berkeley County and Orangeburg County removing a portion of Berkeley County into Orangeburg County. This action removed the old district line as the boundary line between Orangeburg and Berkeley Counties.**

The law states that:

“the county lines of Berkeley County and of Orangeburg County are hereby so altered as to cut off from said Berkeley County and to transfer and annex to and incorporate within said Orangeburg County all of that certain territory or portion of Berkeley County embraced within the following lines and boundaries, to wit: beginning at a point located on Four Holes Swamp at the intersection of the boundary lines of Orangeburg, Dorchester and Berkeley Counties, and extending in a southeasterly direction, along Four Holes Swamp, the same being the boundary between Dorchester and Berkeley Counties, to a large cypress which stands at the confluence of Four Holes and Dean Swamps, at the upper part of Turkey Lake; thence up and along the run of Dean Swamp as it meanders to a point where Dean Swamp and Black Creek unite; thence up Black Creek to the point where Big Black Creek and Little Black Creek unite; thence up Little Black Creek to the point where the "new road" crosses said Little Black Creek; thence northerly up the "new road" to the Monck's Corner Public Road, near Mark Richardson's place; thence N. 10 chains to a pine; then N. 14° E. 38 chains to a stake; thence S. 37° 15' E. 49 chains to a stake; thence E. 9.70 chains to a stake; thence N. 39.50 chains to a stake; thence N. 87° E. 34 chains and 10 links; thence N. 54.50 chains to a stake; thence N. 1° 30' W. 18 chains and 60 links to a stake; thence N. 30° W. 31 chains to a stake; thence N. 8° W. 11 chains to a cypress at the River Road and Rock Creek Bridge; thence northeast along Rock Creek to where Rock Creek empties into the Santee River; thence up the Santee River to the mouth of Eutaw Creek, where the Orangeburg and Berkeley lines connect; thence southwest along the boundary line between Orangeburg and Berkeley Counties to the point of beginning.”

The movement of this section of Berkeley County into Orangeburg County eliminated Berkeley County from further discussion of the old district line



Historical Reference Map

1775 S.C. and N.C. Plat



Historical Reference Map

1795 Map of S.C. with District Line



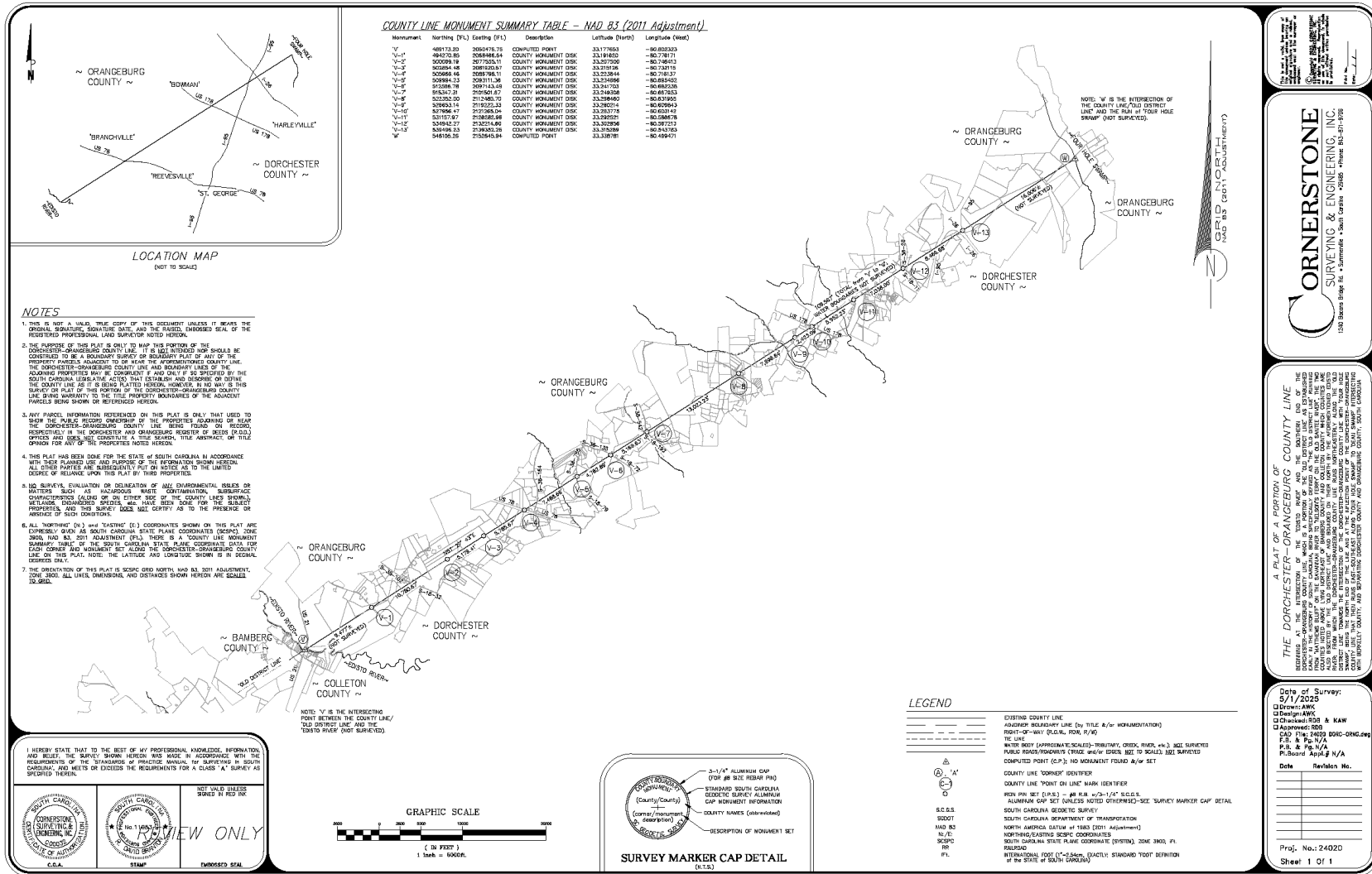
Historical Reference Map

1825 Mills Atlas Orangeburg District



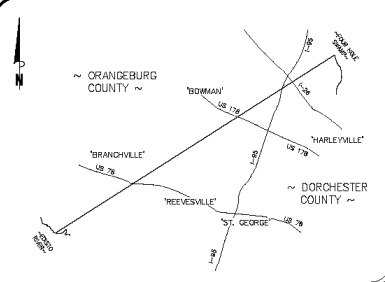
County Line Plat

Sheet 1 of 1



COUNTY LINE MONUMENT SUMMARY TABLE - NAD 83 (2011 Adjustment)

| Monument | Northing (Ft.) | Eastng (Ft.) | Description | Latitude (North) | Longitude (West) |
|----------|----------------|--------------|----------------------|------------------|------------------|
| V-1 | 489173.20 | 206478.76 | COMPUTED POINT | 33.177603 | -80.802323 |
| V-1 | 489170.80 | 206488.64 | COUNTY MONUMENT DISK | 33.178423 | -80.798771 |
| V-2 | 500089.19 | 2077525.11 | COUNTY MONUMENT DISK | 33.227500 | -80.746413 |
| V-2 | 500884.44 | 2081820.91 | COUNTY MONUMENT DISK | 33.231824 | -80.720119 |
| V-2 | 500669.45 | 2088796.11 | COUNTY MONUMENT DISK | 33.231844 | -80.748137 |
| V-2 | 500884.43 | 2081811.36 | COUNTY MONUMENT DISK | 33.231824 | -80.684502 |
| V-2 | 510398.78 | 2097143.33 | COUNTY MONUMENT DISK | 33.341103 | -80.682034 |
| V-2 | 515331.33 | 2107501.87 | COUNTY MONUMENT DISK | 33.248358 | -80.672533 |
| V-2 | 510332.33 | 2115865.37 | COUNTY MONUMENT DISK | 33.296669 | -80.671905 |
| V-2 | 519693.15 | 2125232.33 | COUNTY MONUMENT DISK | 33.280111 | -80.679943 |
| V-2 | 519694.17 | 212524.09 | COUNTY MONUMENT DISK | 33.280111 | -80.691142 |
| V-11 | 53147.97 | 219882.08 | COUNTY MONUMENT DISK | 33.282521 | -80.588478 |
| V-12 | 539482.27 | 2132574.80 | COUNTY MONUMENT DISK | 33.202966 | -80.972733 |
| V-13 | 534196.23 | 2196321.26 | COUNTY MONUMENT DISK | 33.332889 | -80.843763 |
| V | 548100.26 | 2104643.84 | COMPUTED POINT | 33.338781 | -80.699071 |

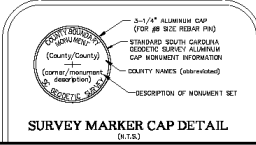
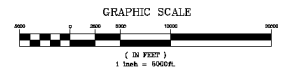


LOCATION MAP (NOT TO SCALE)

- NOTES**
- THIS IS NOT A HOLD THE COPY OF THIS DOCUMENT UNLESS IT BEARS THE ORIGINAL SIGNATURE, SIGNATURE DATE, AND THE SEALED, EMBOSSED SEAL OF THE REGISTERED PROFESSIONAL LAND SURVEYOR NOTED HEREON.
 - THE PURPOSE OF THIS PLAT IS ONLY TO MAP THIS PORTION OF THE DISTRICT LINE BETWEEN ORANGEBURG COUNTY AND DORCHESTER COUNTY. THIS PLAT IS NOT TO BE CONSIDERED AS A BOUNDARY SURVEY OR BOUNDARY PLAT OF ANY OF THE PROPERTY INTERESTS ADJACENT TO OR NEAR THE DISTRICT LINE. THE DORCHESTER-ORANGEBURG COUNTY LINE AND BOUNDARY LINES OF THE ADJACENT PROPERTIES MAY BE CONFIRMED BY AND ONLY IF AS SPECIFIED BY THE SOUTH CAROLINA LEGISLATIVE ACTION THAT ESTABLISHES AND DETERMINE ON DUTY THE COUNTY LINE AS IT IS BEING PLATED HEREON. HOWEVER, IN NO WAY IS THIS SURVEY OR PLAT TO BE CONSIDERED AS THE BOUNDARY OF ORANGEBURG COUNTY LINE BEING WARRANTED TO THE TRUE PROPERTY BOUNDARIES OF THE ADJACENT PARCELS BEING SHOWN OR REFERENCED HEREON.
 - ANY PARCEL INFORMATION REFERENCED ON THIS PLAT IS ONLY THAT USED TO SHOW THE PUBLIC RECORD OWNERSHIP OF THE PROPERTIES ADJACENT OR NEAR THE DORCHESTER-ORANGEBURG COUNTY LINE BEING FOUND ON RECORD, RESPECTFULLY IN THE DORCHESTER AND ORANGEBURG RECORDS OF DEEDS (P.D.) OFFICES AND DOES NOT CONSTITUTE A TITLE SEARCH. TITLE ABSTRACTS OF THIS KIND SHOULD BE OBTAINED BY THE PROPERTIES NOTED HEREON.
 - THIS PLAT HAS BEEN MADE FOR THE STATE OF SOUTH CAROLINA IN ACCORDANCE WITH THEIR PLANNED USE AND PURPOSE OF THE INFORMATION SHOWN HEREON. ALL OTHER PARTIES ARE HEREBY ADVISED NOT TO RELY UPON THIS PLAT TO THE LIMITED DEGREE OF RELIANCE UPON THIS PLAT BY THIRD PROPERTIES.
 - NO SURVEY, EVALUATION OR INDICATION OF ALL ENVIRONMENTAL ISSUES OR MATTERS SUCH AS HAZARDOUS WASTE, CONTAMINATION, SUBSURFACE CONTAMINATION, AROUND OR ON EITHER SIDE OF THE COUNTY LINE BOUNDARY LINES, AND OTHER SPECIFIC MATTERS HAVE BEEN MADE ON THIS PLAT. THE SURVEYOR DOES NOT CERTIFY AS TO THE PRESENCE OR ABSENCE OF SUCH CONDITIONS.
 - ALL "NORTHING" (N) AND "EASTING" (E) COORDINATES SHOWN ON THIS PLAT ARE EXPRESSLY GIVEN AS SOUTH CAROLINA STATE PLANE COORDINATES (SCPCS) ZONE 3000, NAD 83, 2011 ADJUSTMENT (F.T.). THERE IS A COUNTY LINE MONUMENT SUMMARY TABLE IN THE SOUTH CAROLINA STATE PLANE COORDINATE DATA FILE FOR EACH COUNTY AND MONUMENT SET ALONG THE DORCHESTER-ORANGEBURG COUNTY LINE ON THIS PLAT. NOTE THE LATITUDE AND LONGITUDE SHOWN IN DECIMAL DEGREES ONLY.
 - THE ORIENTATION OF THIS PLAT IS SCPCS GRID NORTH, NAD 83, 2011 ADJUSTMENT. THE GRID, ALL UNIT DIMENSIONS, AND DISTANCES SHOWN HEREON ARE SCALED TO GRID.

I HEREBY STATE THAT TO THE BEST OF MY PROFESSIONAL KNOWLEDGE, INFORMATION AND BELIEF, THE MAP(S) SHOWN HEREON WAS/WERE IN ACCORDANCE WITH THE REQUIREMENTS OF PRACTICE MANUAL FOR SURVEYS IN SOUTH CAROLINA, AND MEETS OR EXCEEDS THE REQUIREMENTS FOR A CLASS "A" SURVEY AS SPECIFIED THEREIN.

DATE: 5/11/2025
 SURVEYOR: [Signature]
 EMBOSSED SEAL



LEGEND

- EXISTING COUNTY LINE
- ADJACENT BOUNDARY LINE (BY TITLE &/OR MONUMENTATION)
- RIGHT-OF-WAY (EQUAL, ROAD, ETC.)
- THE LINE
- RIGHT-OF-WAY (SLOPED, SCALED, TRIBUTARY, CREEK, RIVER, ETC.) NOT SURVEYED
- PUBLIC ROAD/TOWNSHIP CROWN #4/W/ EDEWS SIZE TO SCALE AND SURVEYED
- COMPUTED POINT (C.P.): NO MONUMENT FOUND #4/W SET
- COUNTY LINE "CORNER" CENTERLINE
- COUNTY LINE "POINT ON LINE" MARK IDENTIFIER
- IRON PIN SET (I.P.S.) - #8 R.B. #3-1/4" S.C.S.S.
- ALUMINUM CAP SET (UNLESS NOTED OTHERWISE)-SIZE SURVEY MARKER CAP DETAIL
- SOUTH CAROLINA GEODETIC SURVEY
- SOUTH CAROLINA DEPARTMENT OF TRANSPORTATION
- NORTH AMERICA DATUM OF 1983 (2011 Adjustment)
- NORTHING/EASTING SCPCS COORDINATES
- SOUTH CAROLINA STATE PLANE COORDINATE (SYSTEM) ZONE 3000, F.T.
- INTERNATIONAL FOOT (I.F.T.) - EXACTLY STANDARD FOOT DEFINITION OF THE STATE OF SOUTH CAROLINA

CORNERSTONE
 SURVEYING & ENGINEERING, INC.
 1242 Bruce Edge Rd., Summerville, South Carolina 29486, Phone: 843-871-9700

A PART OF A PORTION OF THE DORCHESTER-ORANGEBURG COUNTY LINE

BEARING AS THIS INTERSECTION OF THE COUNTY LINE/DISTRICT LINE OF THE DISTRICT LINE BETWEEN ORANGEBURG COUNTY AND DORCHESTER COUNTY. THIS PLAT IS NOT TO BE CONSIDERED AS A BOUNDARY SURVEY OR BOUNDARY PLAT OF ANY OF THE PROPERTY INTERESTS ADJACENT TO OR NEAR THE DISTRICT LINE. THE DORCHESTER-ORANGEBURG COUNTY LINE AND BOUNDARY LINES OF THE ADJACENT PROPERTIES MAY BE CONFIRMED BY AND ONLY IF AS SPECIFIED BY THE SOUTH CAROLINA LEGISLATIVE ACTION THAT ESTABLISHES AND DETERMINE ON DUTY THE COUNTY LINE AS IT IS BEING PLATED HEREON. HOWEVER, IN NO WAY IS THIS SURVEY OR PLAT TO BE CONSIDERED AS THE BOUNDARY OF ORANGEBURG COUNTY LINE BEING WARRANTED TO THE TRUE PROPERTY BOUNDARIES OF THE ADJACENT PARCELS BEING SHOWN OR REFERENCED HEREON.

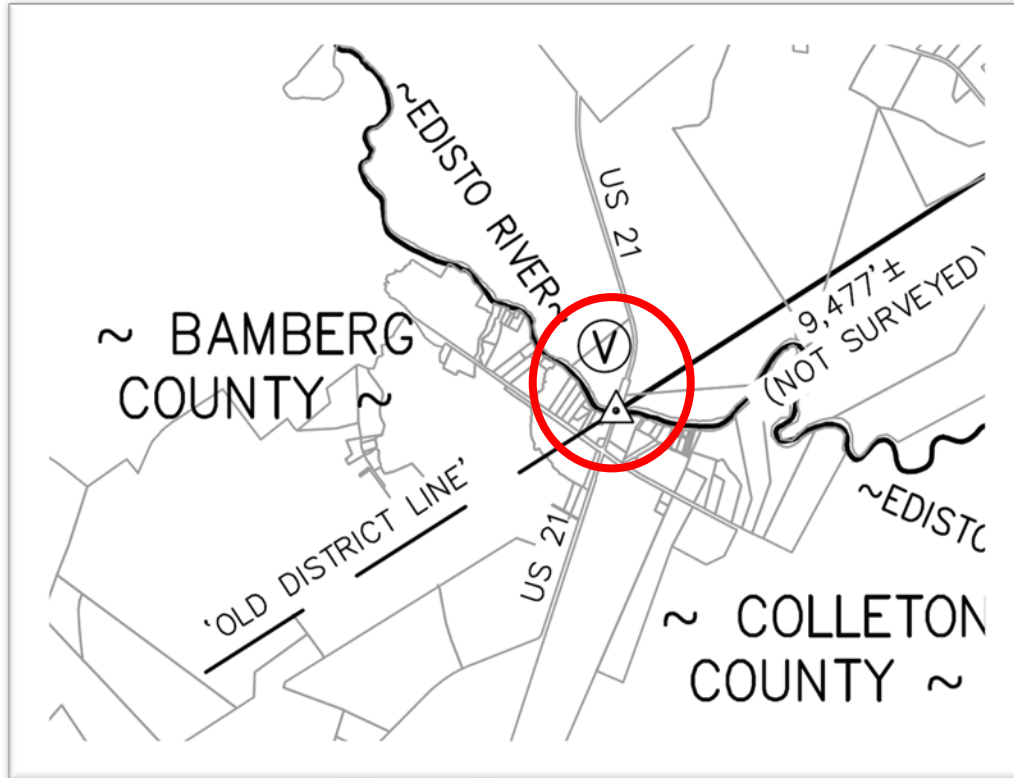
Date of Survey:
 5/11/2025

Design: [Signature]
Checked: [Signature] & [Signature]
Approved: [Signature]
 F.T. & P.D. N/A
 P.L. Board App'd N/A

Date **Revision No.**

Proj. No.: 24020
 Sheet: 1 of 1

Dorchester County / Orangeburg County Line Monument Monument V



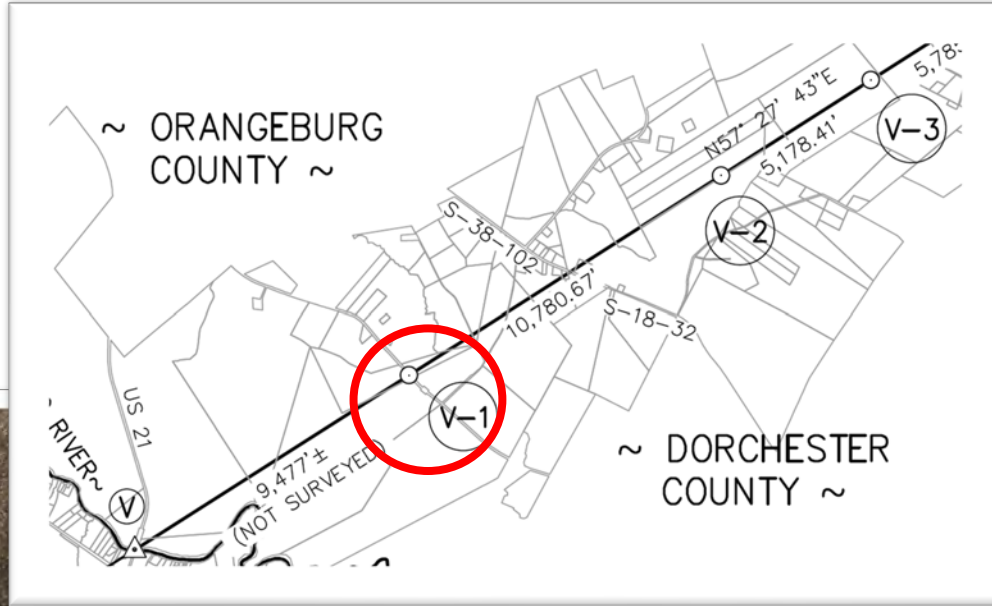
(Sheet 1 of 1)



Please note, this point along
the county line is calculated



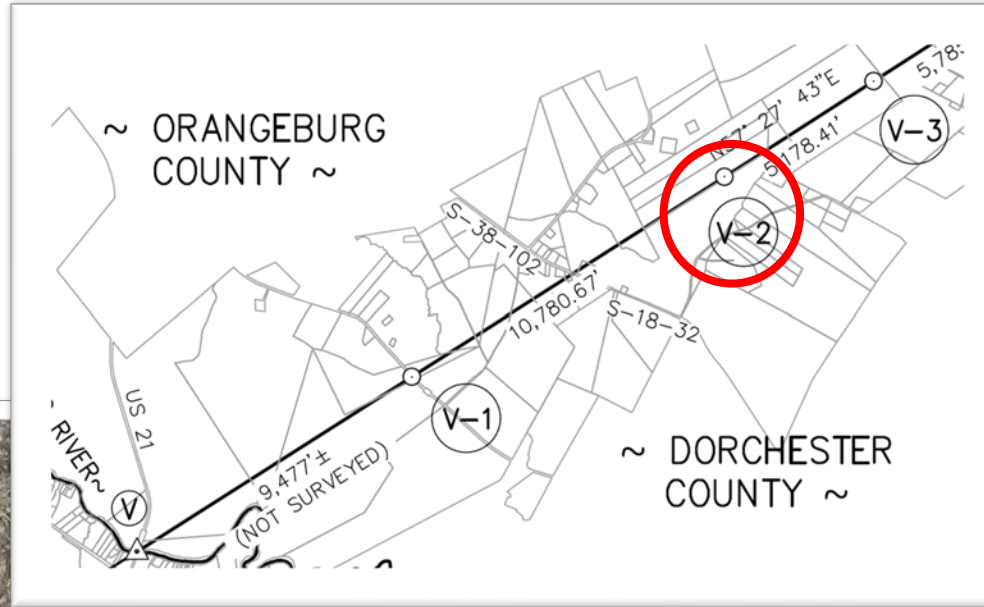
Dorchester County / Orangeburg County Line Monument Monument V-1



(Sheet 1 of 1)



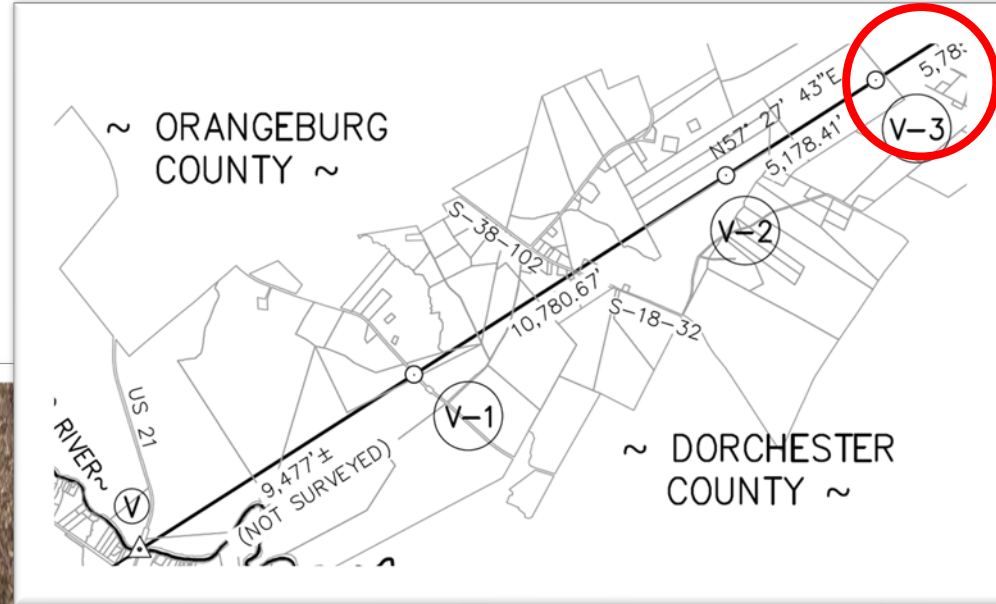
Dorchester County / Orangeburg County Line Monument Monument V-2



(Sheet 1 of 1)



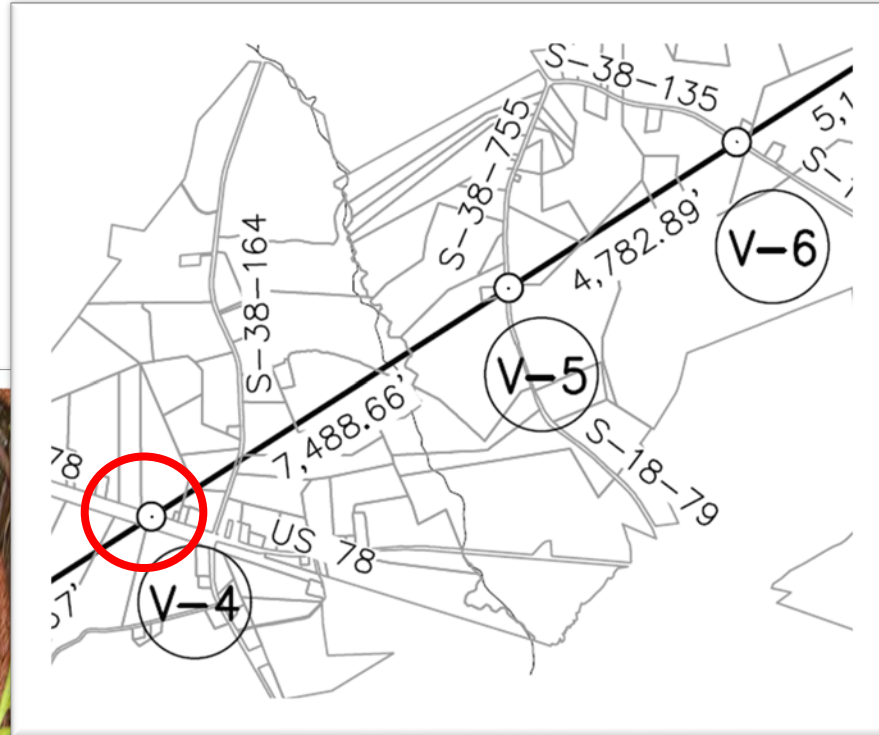
Dorchester County / Orangeburg County Line Monument Monument V-3



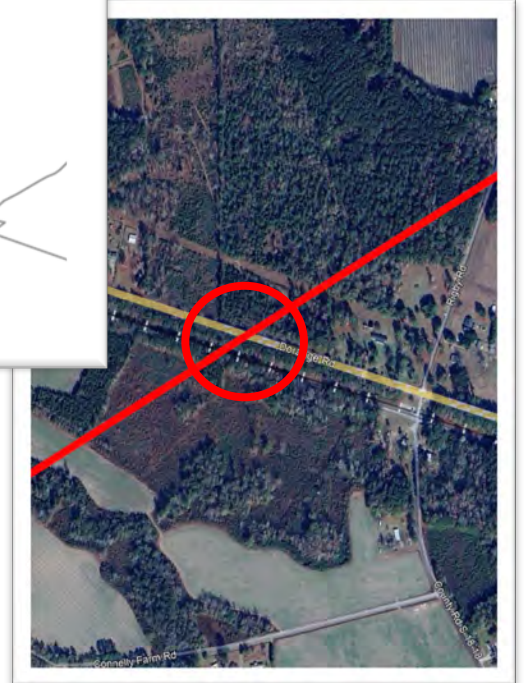
(Sheet 1 of 1)



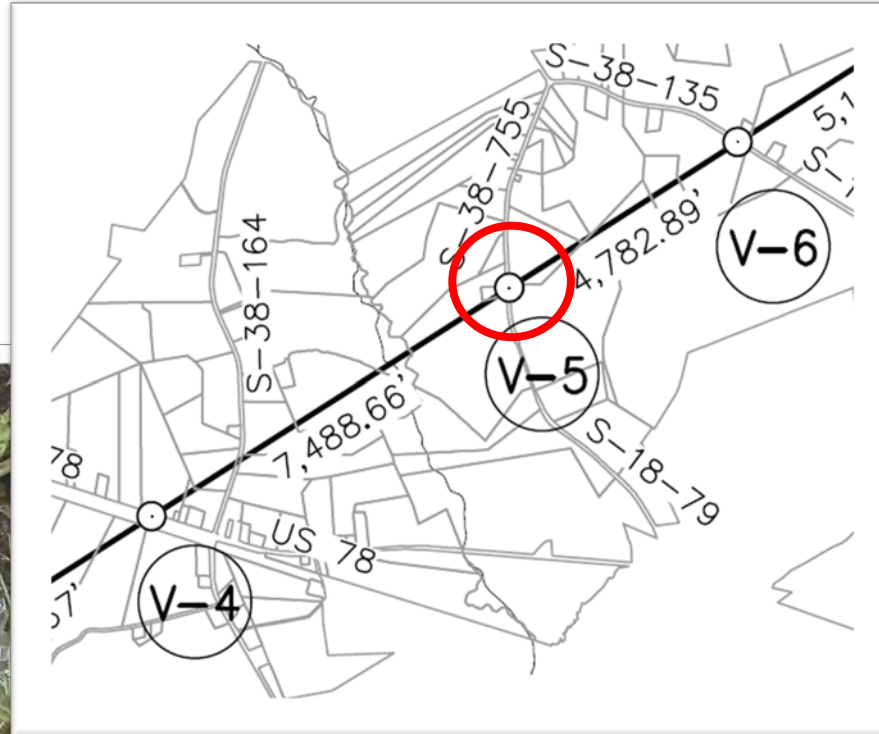
Dorchester County / Orangeburg County Line Monument Monument V-4



(Sheet 1 of 1)



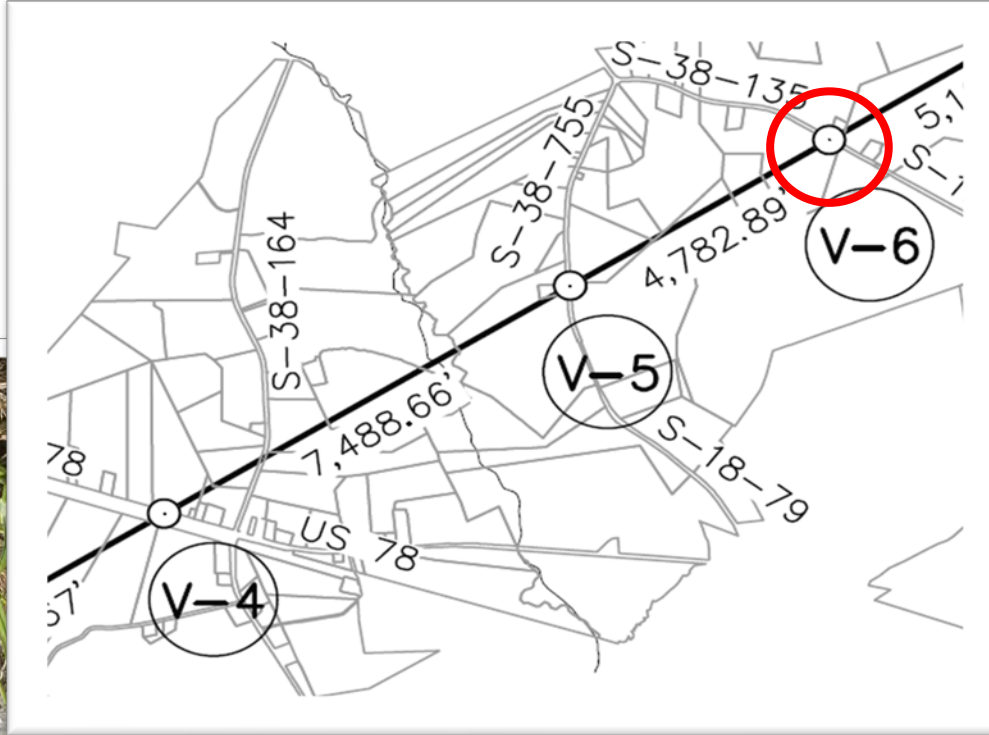
Dorchester County / Orangeburg County Line Monument Monument V-5



(Sheet 1 of 1)



Dorchester County / Orangeburg County Line Monument Monument V-6



(Sheet 1 of 1)



Dorchester County / Orangeburg County Line Monument Monument V-7



(Sheet 1 of 1)



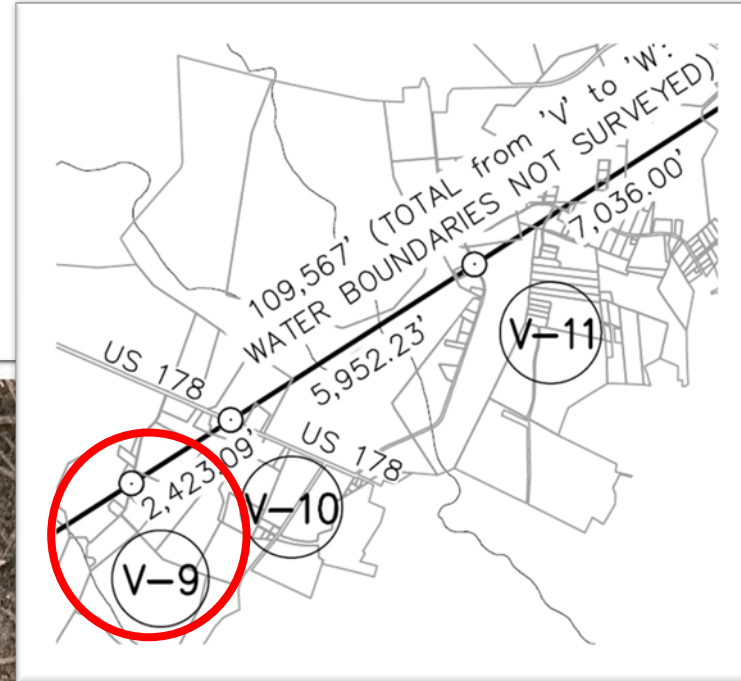
Dorchester County / Orangeburg County Line Monument Monument V-8



(Sheet 1 of 1)



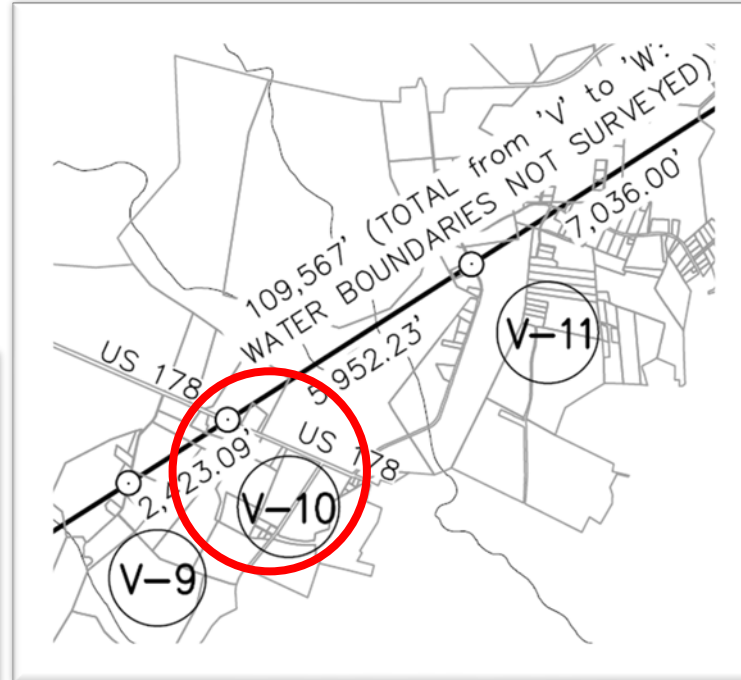
Dorchester County / Orangeburg County Line Monument Monument V-9



(Sheet 1 of 1)



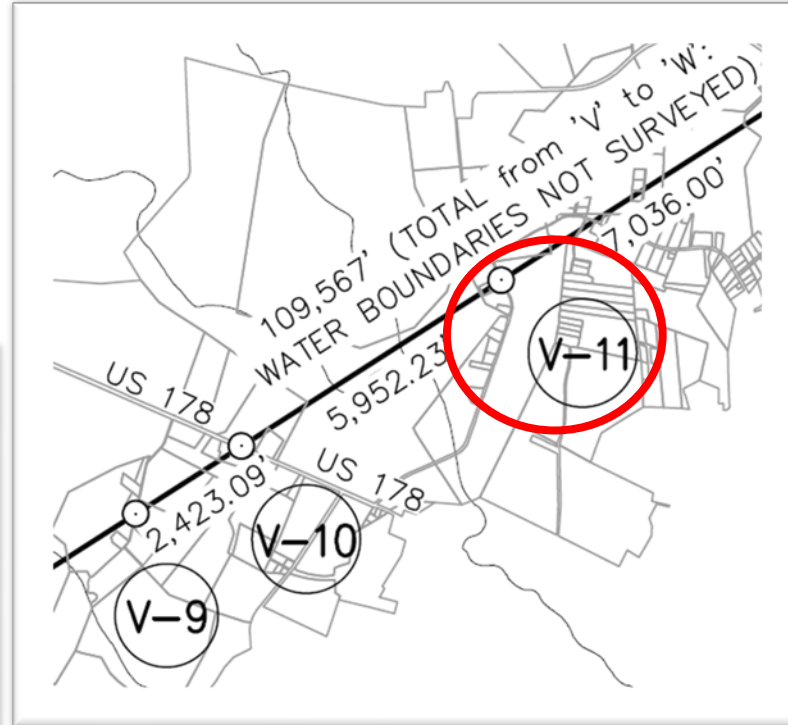
Dorchester County / Orangeburg County Line Monument Monument V-10



(Sheet 1 of 1)



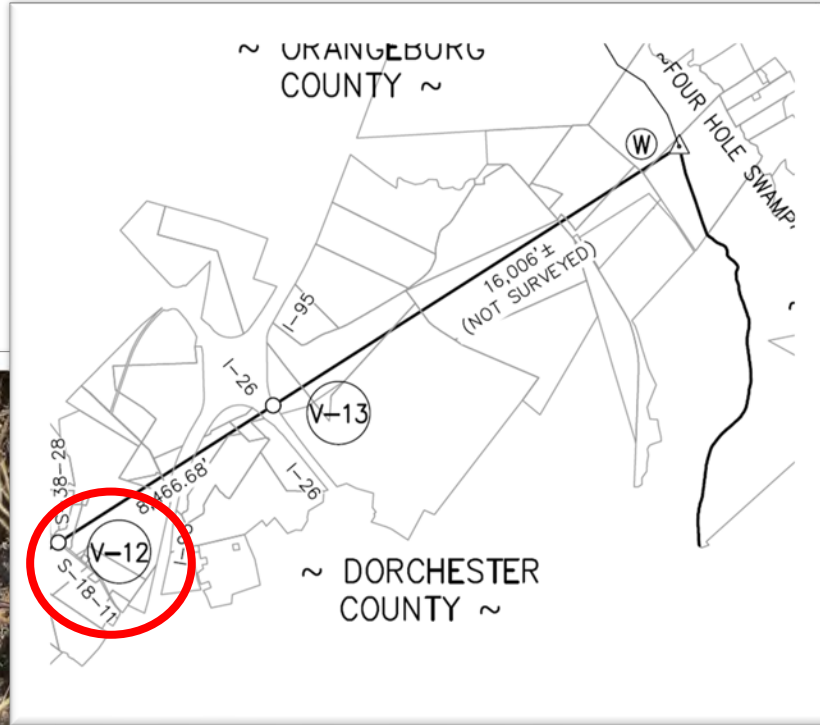
Dorchester County / Orangeburg County Line Monument Monument V-11



(Sheet 1 of 1)



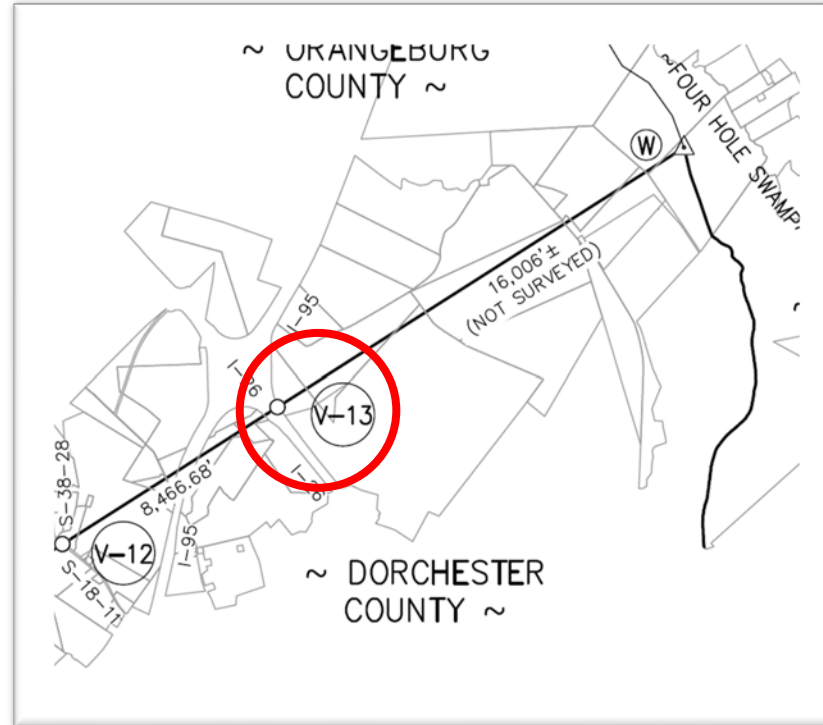
Dorchester County / Orangeburg County Line Monument Monument V-12



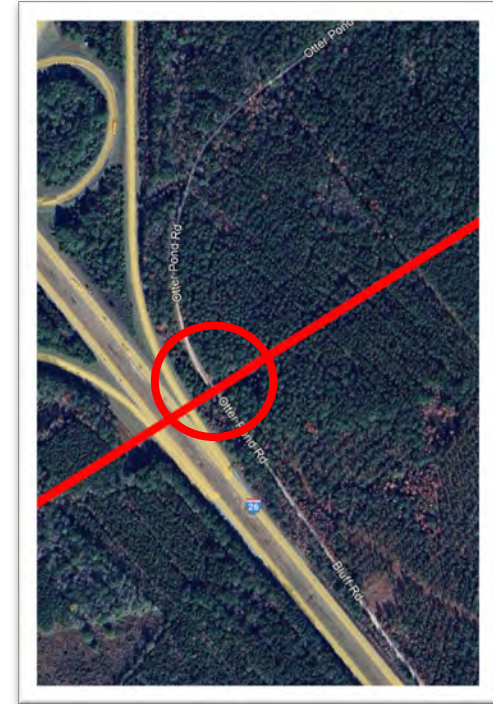
(Sheet 1 of 1)



Dorchester County / Orangeburg County Line Monument Monument V-13



(Sheet 1 of 1)



Project Page:

<https://rfa.sc.gov/Dorc-Oran>

QUESTIONS?

Or Information You Would Like to Provide?

PLEASE CALL: [803-734-3793](tel:803-734-3793)

or EMAIL: boundary@rfa.sc.gov

**We Will Work to Address Questions Promptly or Direct
Questions to the Appropriate Agency or Jurisdictional Entity**

