



Allendale - Hampton County Line



Jacob Braxton, PLS
County Boundary Program Manager
Revenue and Fiscal Affairs
SC Geodetic Survey

Overview

- Why is the SC Geodetic Survey the chosen agency
- Reason for boundary clarification
- The requirements and duties of the SC Geodetic Survey
- Explanation of our methods
- Boundary clarification procedure
- Legal process for individuals disagreeing with SCGS findings
- Statutory description of county boundary
- Research and findings
- Monumentation and Survey
- Conclusion



County Boundary Re-establishment Program

Why SC Geodetic Survey?

- Over the last 30+ years, the South Carolina Geodetic Survey has worked with South Carolina counties to help resolve ambiguities between county boundaries

SC Code of Law SECTION 27-2-105

- The General Assembly determined it necessary to re-survey the county boundaries of the state
- Act No. 262 of 2014: “so as to authorize and direct the SCGS to clarify county boundaries...”

WHY

- Passage of time and growth has led to confusion over statutory county descriptions and the locations of county boundary lines
- Exact and precise locations and boundaries of the State’s political subdivisions are critical for services, enforcement of property rights and election of public officials.
- Necessary for state government and political subdivisions
- Technology exists now to cost-effectively provide definite and permanent markers of boundary lines



Steps for Clarifying Boundaries

SC Code of Law SECTION 27-2-105 (A)(1)

- Requirements of SCGS:

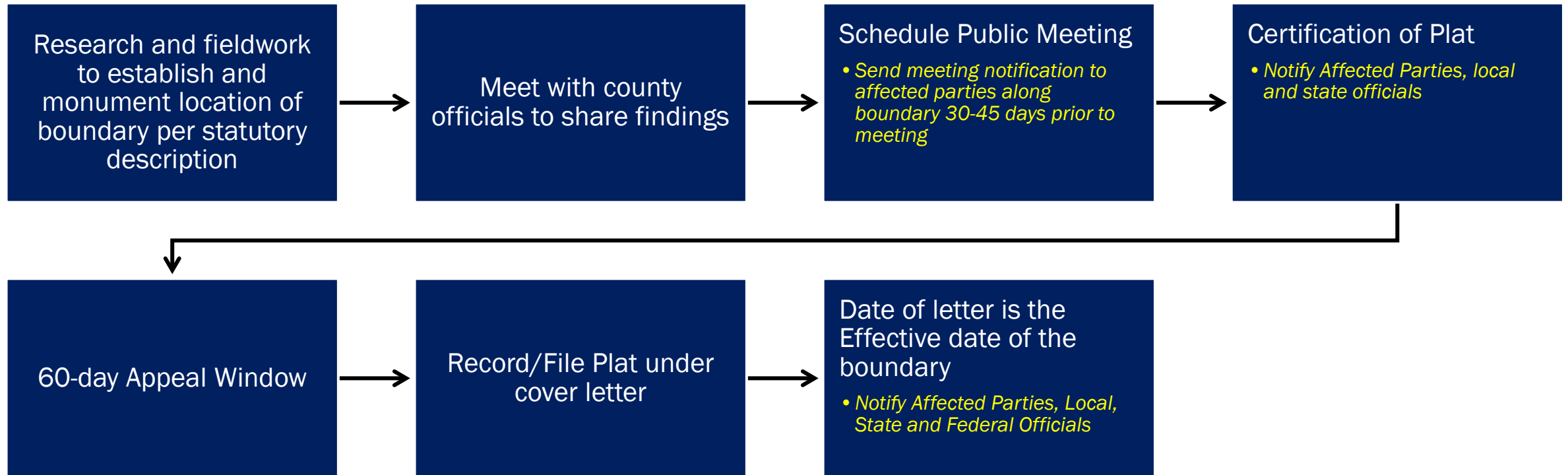
- Where county boundaries are ill-defined, unmarked, or poorly marked, the South Carolina Geodetic Survey on a cooperative basis shall assist counties in defining and monumenting the locations of county boundaries and positioning the monuments using geodetic surveys. The South Carolina Geodetic Survey (SCGS) shall seek to clarify the county boundaries as defined in Chapter 3, Title 4. The SCGS shall analyze archival and other evidence and perform field surveys geographically to position all county boundaries in accordance with statutory descriptions. Physical and descriptive points defining boundaries must be referenced using South Carolina State Plane Coordinates.

- Requirements of SCGS:

- Upon reestablishing county boundary, SCGS shall certify its work and within 30 days of certification:
- Provide copies to the administrator of each affected county; Provide written notification to affected parties
- Provide notice and copies to the public through its official website and or other means it considers appropriate; and
- Notify as it determines appropriate, other affected state and federal agencies
- (Initiates 60 Day Appeal Process)
- Certified Surveys submitted to Secretary of State, Register of Deeds Offices, and South Carolina Department of Archives with Cover Letter
- Date of the cover letter is the date the surveys become effective
- Introduce Legislation to update Code of Law to reflect clarified boundary with State Plane Coordinates



SCGS County Boundary Clarification Process



SC Code of Law SECTION 27-2-105 (B) (1)

- **Affected Parties Disagreeing with SCGS:**
 - May file request for a contested case hearing with the SC Administrative Law Court
 - This decision may be appealed
 - **“Affected Party”**
 - Governing body of an affected county
 - Governing body of a political subdivision of this State
 - An elected official, other than a statewide elected official
 - A property owner or an individual residing in the certification zone
 - A business entity located in the certification zone
 - A nonresident individual who owns or leases real property situated in the certification zone



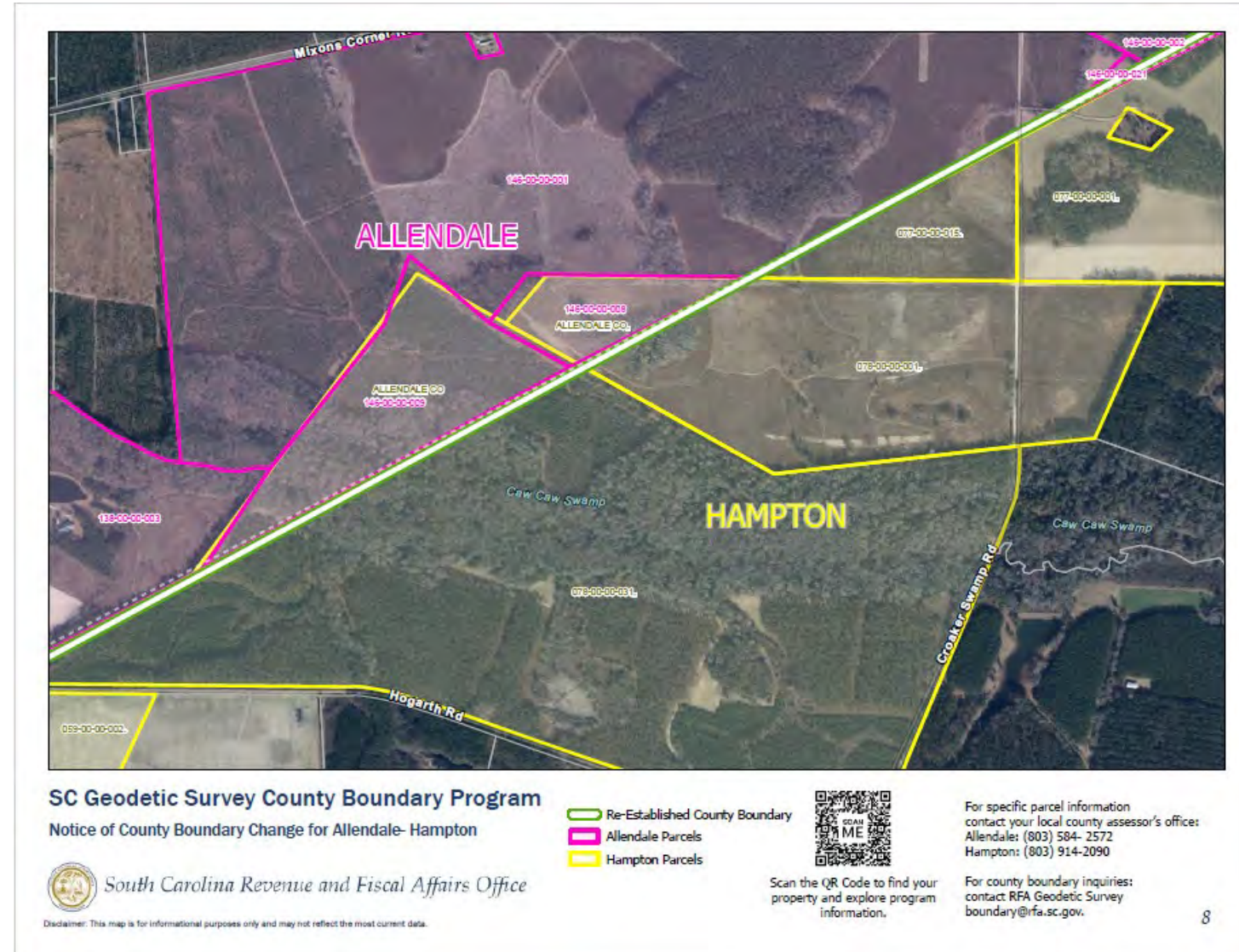
Public Meeting Notification (Example)

- Every Property Owner along the boundary line is notified
- 1st notification informing of public meeting
- 2nd notification informing of certification of work and 60-day appeal window
- 3rd notification informing of project completion



Public Meeting Notification (Example)

- Maps are sent with the 1st notification letting
- Showing County Parcel layers with the Re-established County boundary line overlaid

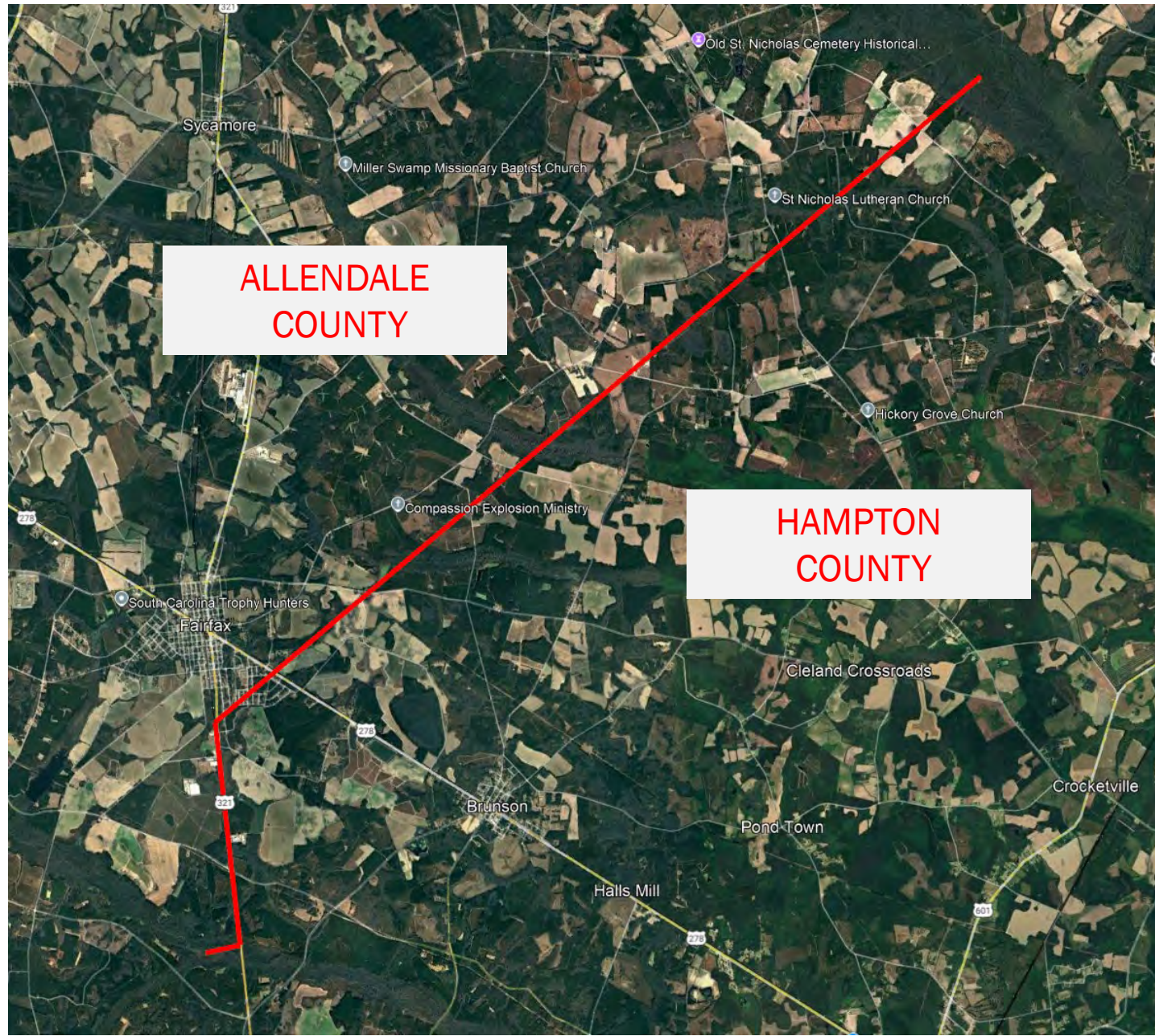


SURVEY REPORT



From a point at the Intersection of
Beech Branch and the Coosawhatchie River
to a point on the
Salkehatchie River
at the
Bamberg – Colleton County Line





Portions of this line were originally created as a District Line in 1768

Creation of the Old District Line, 1768. In the *Statutes at Large of South Carolina*, editor, David J. McCord, Vol. 7 of 10 volumes, (A.S. Johnston, Columbia, SC, 1840), page 199, the Colonial House of Representatives of South Carolina on April 12, 1768, agreed on a district line dividing Charleston and Beaufort Districts from that of Orangeburgh (copy attached). Specifically it says that Charleston precinct [or district] for courts would be established in the west by:

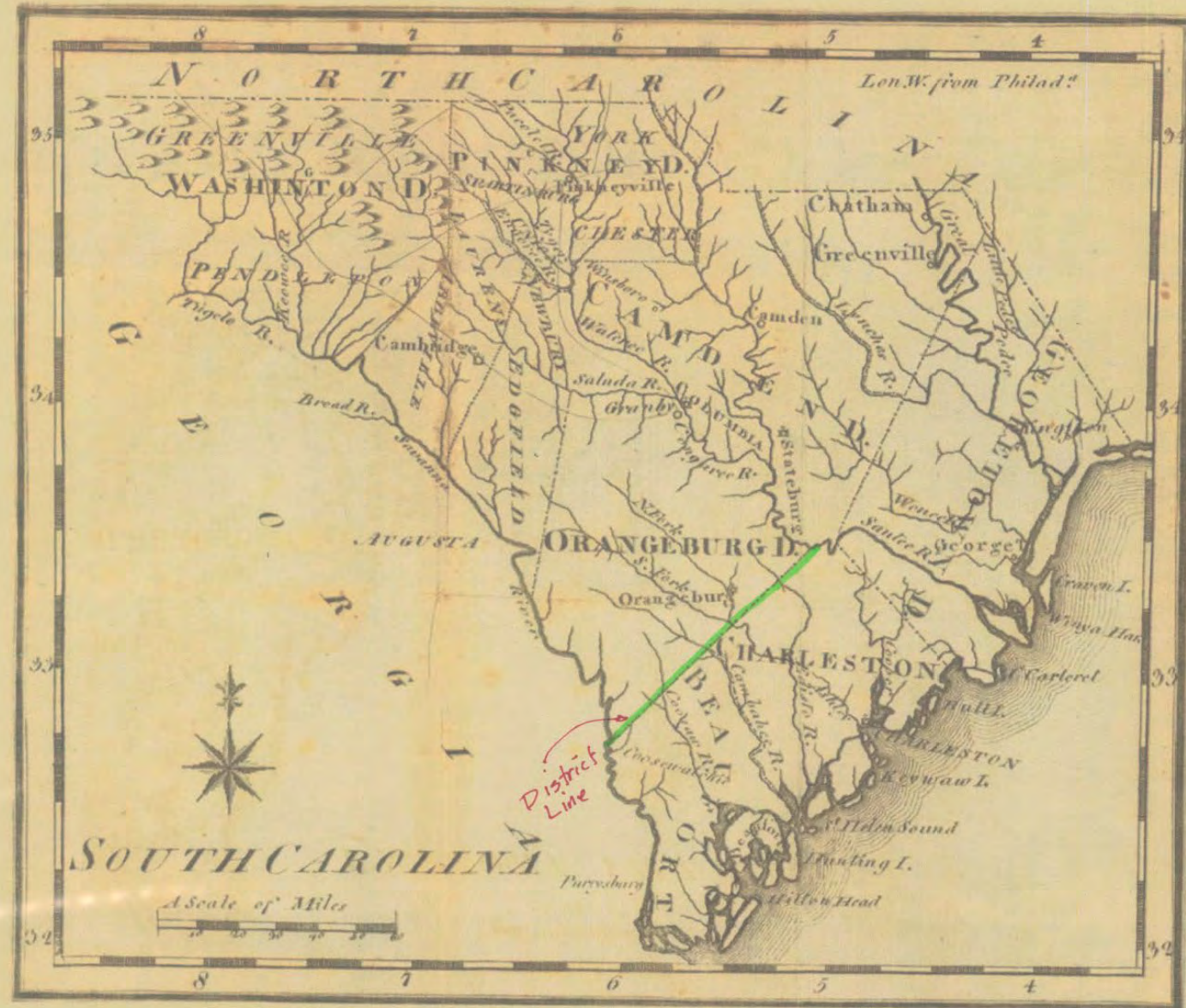
“a line drawn from **Nelson’s Ferry** [or Neilson’s] [on the Santee River] **directly** to **Mathew’s Bluff**, on Savannah River. . .” it goes on to establish the Beaufort Precinct or District along the “said line, to be continued from the main swamp aforesaid [marking the end of Charleston District], to Mathew’s Bluff, on Savannah River.” Furthermore, it established Orangeburgh’s southeastern line along, “said line from Nelson’s Ferry to Mathew’s Bluff.”



**First State map showing
the line, 1775.**
*Henry Mouzon and Other's
map of South and North
Carolina,*

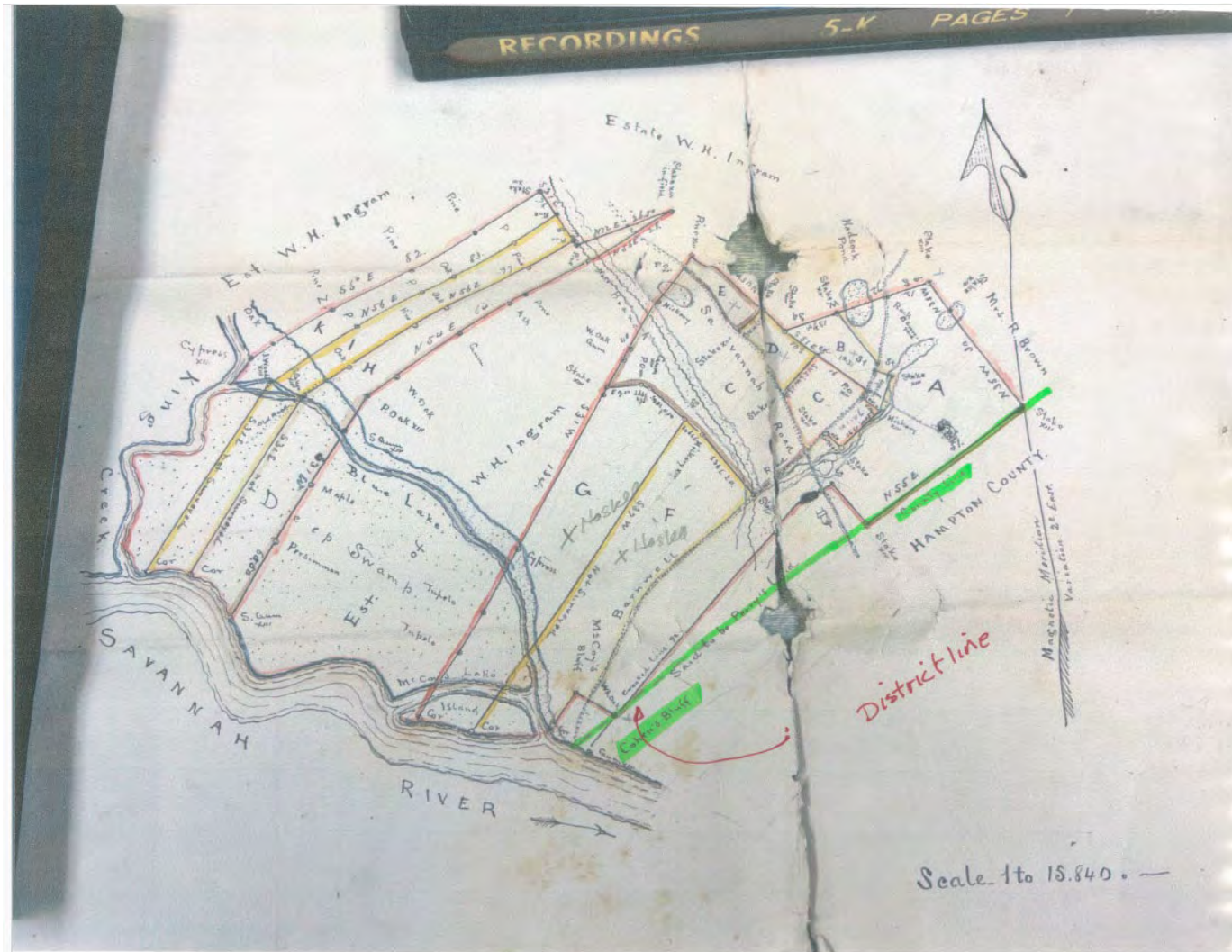






South Carolina 1795 From the United States Gazetteer Containing an Authentic Description of the Several States Joseph Scott www.old-maps.com





(20)

Original located in Barnwell County Judgement
roll Bundle 106, Roll 12
Barnwell County Clerks Office



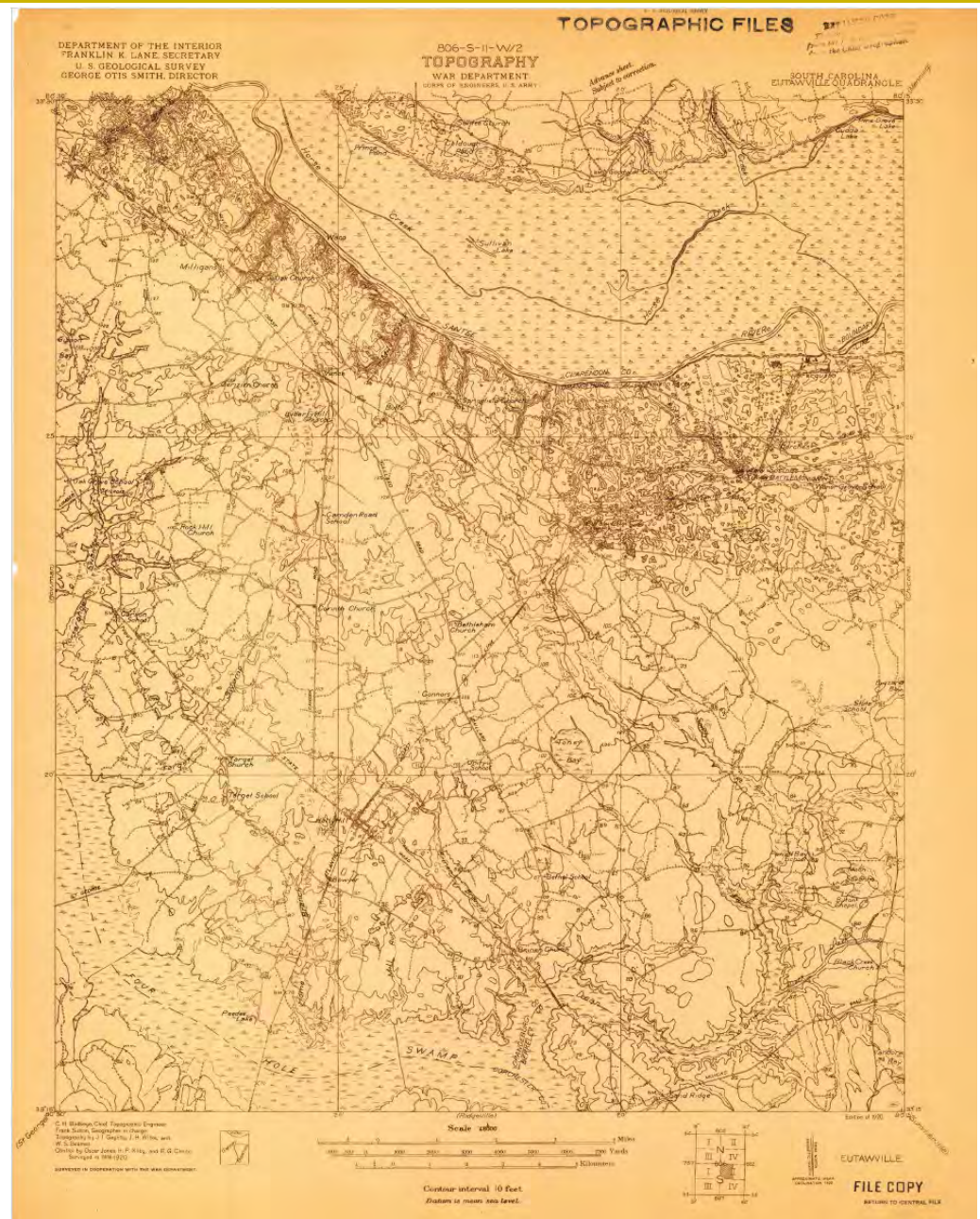


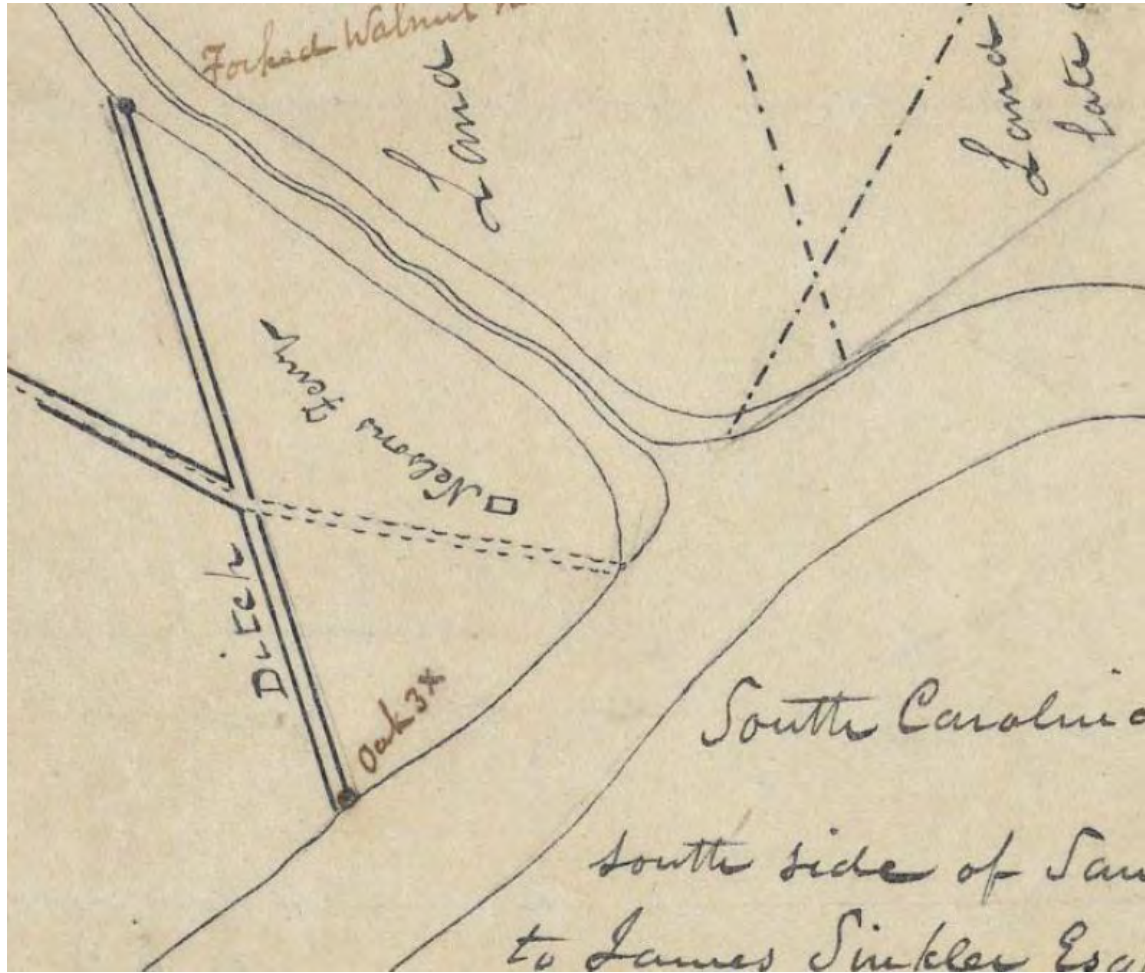
Mills Atlas of Charleston District surveyed 1820





USGS Quad map Eutawville, SC 1920





McCrary Plat of Belvedere Plantation, 1795

Change from District to Counties by the State Constitution, effective March 17, 1868.

In *The Constitution of the State of South Carolina with the Ordinances thereunto Appended* (Deny and Perry, Book and Job Printers, Charleston, 1868), p. 8 records that the legislature effective March 17, 1868, established a new constitution for the state and designated that all former districts were to be counties. This impacted Charleston, Colleton, Beaufort, Barnwell, and Orangeburg counties. There were no boundary changes.



Lines are Established by Legislative Acts

South Carolina Code of Laws

Title 4 Counties Chapter 3

Boundaries of Existing Counties



Creation of Hampton County in 1878

- *Acts and Joint Resolutions of the General Assembly of the State of South Carolina, passed at the Regular Session of 1877-78*, (Calvo & Patton State Printers, Columbia, SC 1878), p. 375-377, dated February 18, 1878 (copy attached). It defined the boundary as:
- “that portion of Beaufort County, north of the present line (1878) of the Savannah and Charleston Railroad Line.”
- That makes the old district line the western boundary of Hampton County, formerly the western boundary of Beaufort County. No change in district line. *General Statutes and the Code of Civil Procedure of South Carolina*, (James Woodrow, State Printer, Columbia, SC, 1882) define the northwest boundary only as:
- “on the northwest by Barnwell County.”
- The creation of Hampton County eliminated Beaufort County from further discussion of the old district line.



Changes in the description of the county lines involving the Old District line in 1902.

In *Code of Laws of South Carolina in 1902* (The State Company, State Printers, Columbia, SC 1902). The following changes:

On page 236 there is no change in Hampton County boundary descriptions



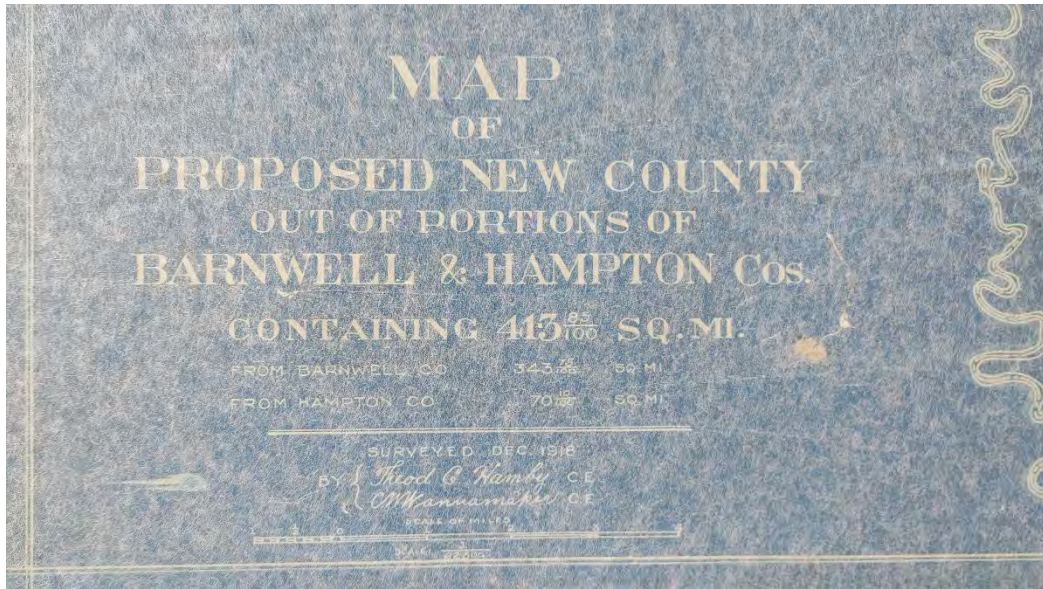
Creation of Allendale County effective February 6, 1919

In *Acts and Resolutions of the General Assembly of South Carolina passed at the regular session of 1919* (R. L. Bryan Co., Columbia, 1919), pp. 5-17 (copy attached) the legislature created Allendale County out of Barnwell County and Hampton County. The new county boundary followed the old district line for part of its southeast boundary (copy attached). The Acts described that portion of the new county boundary that involved the old district line as:

“thence down the run of Well Branch to the Salkehatchie River; thence down the Salkehatchie River to its intersection with the Bamberg-Colleton County line [old district line]; thence southwesterly along a continuation of said Bamberg-Colleton County line to its intersection with the eastern edge of the right of way of the Seaboard Air Line Railway; thence in a southerly direction along said eastern edge of said railway right of way to a stake **eight miles and 200 feet** from the **Hampton County Court House.**”

According to the legislative documents reviewed, these boundaries have not been altered





MAP
OF
PROPOSED NEW COUNTY
OUT OF PORTIONS OF
BARNWELL & HAMPTON Cos.

CONTAINING 415 ⁸²/₁₀₀ SQ. MI.

FROM BARNWELL CO. 343 ²⁵/₁₀₀ SQ. MI.

FROM HAMPTON CO. 70 ⁵⁷/₁₀₀ SQ. MI.

SURVEYED DEC. 1816

BY *Thos. C. Hamble* C.E.

Wm. Mansamaker C.E.

SCALE OF MILES

1/2 1 1 1/2 2



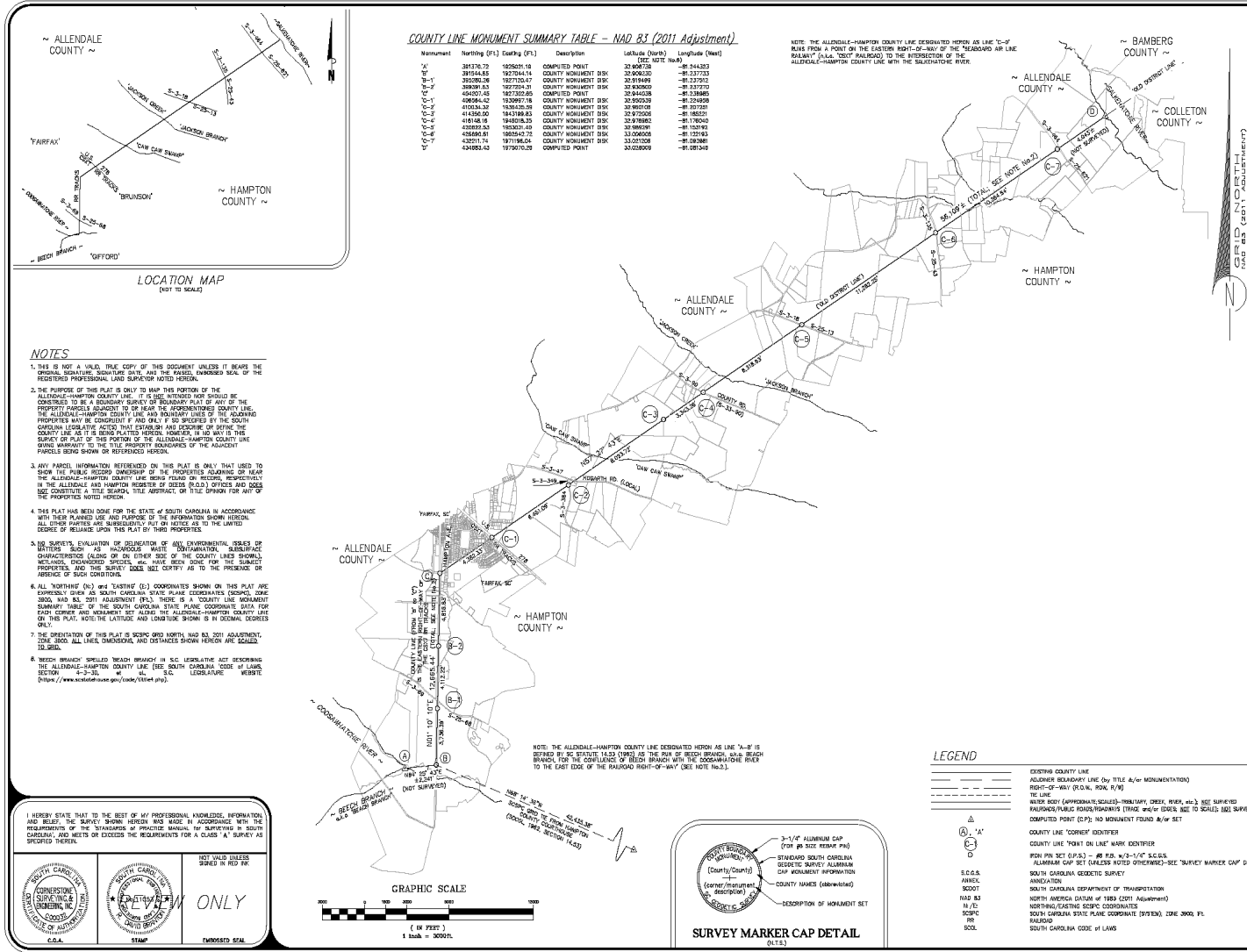


Center of Hampton County Courthouse



County Line Plat

Sheet 1 of 1



COUNTY LINE MONUMENT SUMMARY TABLE - NAD 83 (2011 Adjustment)

Monument	Northing (F1)	Easting (F1)	Description	Longitude (Mean)	Lat. Note No(s)
381276.73	102807.18	COMPUTED POINT	381287.00	-81.217323	
391544.85	102704.14	COUNTY MONUMENT DISK	332608.00	-81.217733	
392080.08	102700.47	COUNTY MONUMENT DISK	331914.00	-81.217973	
388391.43	102724.31	COUNTY MONUMENT DISK	334306.00	-81.217770	
426557.43	102730.60	COUNTY POINT	331845.00	-81.218465	
408284.42	103097.18	COUNTY MONUMENT DISK	332903.00	-81.214959	
410334.32	103026.08	COUNTY MONUMENT DISK	331945.00	-81.215701	
414336.00	104319.83	COUNTY MONUMENT DISK	329750.00	-81.186231	
416148.14	104806.33	COUNTY MONUMENT DISK	329180.00	-81.176041	
428829.53	105820.39	COUNTY MONUMENT DISK	329869.00	-81.151192	
426889.01	106242.72	COUNTY MONUMENT DISK	331006.00	-81.151663	
432011.74	107118.04	COUNTY MONUMENT DISK	332010.00	-81.083881	
430652.42	107007.08	COMPUTED POINT	332280.00	-81.083548	

NOTE: THE ALLENDALE-HAMPTON COUNTY LINE DESIGNATED HEREON AS LINE "A-B" IS BEING RUN FROM A POINT ON THE EASTERN RIGHT-OF-WAY OF THE NEIGHBORING AIR LINE RAILROAD TO THE INTERSECTION OF THE ALLENDALE-HAMPTON COUNTY LINE WITH THE COCOSWATCHEE RIVER.

NOTES

- THIS IS NOT A VALID TRUE COPY OF THIS DOCUMENT UNLESS IT BEARS THE ORIGINAL SIGNATURE, SIGNATURE STATE, AND THE ORIGINAL HAMBURG SEAL OF THE REGISTERED PROFESSIONAL LAND SURVEYOR NOTED HEREON.
- THE PURPOSE OF THIS PLAT IS ONLY TO MARK THE PORTION OF THE ALLENDALE-HAMPTON COUNTY LINE. IT IS NOT INTENDED NOR SHOULD BE CONSTRUED TO BE A BOUNDARY SURVEY OF BOUNDARY LINES OF THE PROPERTY PARCELS ADJACENT TO OR NEAR THE INCORPORATED COUNTY LINE. THE ALLENDALE-HAMPTON COUNTY LINE AND BOUNDARY LINES OF ADJACENT PROPERTY MAY BE CORRELATED IF AND ONLY IF SO SPECIFIED BY THE SOUTH CAROLINA LEGISLATURE. ANYTHING THAT CONFLICTS WITH THE PURPOSE OF THIS COUNTY LINE PLAT IS BEING RELATED HERON. THERE IS NO WAY TO THE SURVEY OF PLAT OF THIS PORTION OF THE ALLENDALE-HAMPTON COUNTY LINE BEING SHOWN OR REFERENCED HERON.
- ANY PARCEL INFORMATION REFERENCED ON THIS PLAT IS ONLY THAT USED TO SHOW THE PUBLIC RECORD OWNERSHIP OF THE PROPERTIES ADJACENT TO NEAR THE ALLENDALE-HAMPTON COUNTY LINE BEING PLACED ON RECORD, RESPECTIVELY IN THE ALLENDALE AND HAMPTON REGISTER OF DEEDS (BOOK) VOLUMES AND DOES NOT CONSTITUTE A TITLE SEARCH. TITLE ABSTRACT OR TITLE OPINION FOR ANY OF THE PARCELS NOTED HERON.
- THIS PLAT HAS BEEN DONE FOR THE STATE OF SOUTH CAROLINA IN ACCORDANCE WITH THE PURPOSES AND PURPOSES OF THE REVISIONS TO THE LIMITED SURVEY ACT. ALL OTHER PARTIES ARE UNLAWFULLY PUT ON NOTICE AS TO THE LIMITED SCOPE OF RELIANCE UPON THIS PLAT BY THIRD PARTIES.
- NO SURVEY EVALUATION OR DELINEATION OF ANY ENVIRONMENTAL ISSUES OR OTHERS SUCH AS HAZARDOUS WASTE CONTAMINATION, SUBSURFACE CHARACTERISTICS (GAS OR OTHER GAS) OF THE COUNTY LINES (GAS), METALS, ORGANIZED SPICES, ETC. HAVE BEEN DONE FOR THE SUBJECT PROPERTIES, AND THIS SURVEY DOES NOT CERTIFY AS TO THE PRESENCE OR ABSENCE OF SUCH CONDITIONS.
- ALL NORTHING (N) AND EASTING (E) COORDINATES SHOWN ON THIS PLAT ARE EXPRESSLY GIVEN AS SOUTH CAROLINA STATE PLANE COORDINATES (SCSPLC), STATE 3003 AND NAD 83 (2011 ADJUSTMENT) (F1). THERE IS A COUNTY LINE MONUMENT SUMMARY TABLE OF THE SOUTH CAROLINA STATE PLANE COORDINATE DATA FOR EACH COUNTY AND MONUMENTS NOT ALONG THE ALLENDALE-HAMPTON COUNTY LINE ON THIS PLAT. NOTE THE LATITUDE AND LONGITUDE SHOWN IS IN DECIMAL DEGREES ONLY.
- THE ORIENTATION OF THIS PLAT IS BEING GIVEN NORTH AS 2011 ADJUSTMENT. STATE 3003 WILL LINE, DIMENSIONS AND DISTANCES SHOWN HERON ARE SCALED TO STATE.
- BEECH BRANCH SPILLED BRANCH BRANCH IN S.C. LEGISLATIVE ACT DESIGNING THE ALLENDALE-HAMPTON COUNTY LINE (SEE SOUTH CAROLINA CODES OF LAWS, SECTION 4-3-30, ALL S.C. LEGISLATURE WEBSITE: <http://www.ncsl.org/legislativewebsite/>)

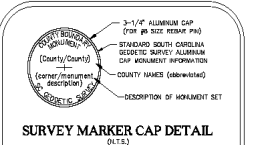
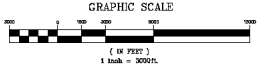
I HEREBY STATE THAT TO THE BEST OF MY PROFESSIONAL KNOWLEDGE, INFORMATION AND BELIEF, THE SURVEY SHOWN HERON WAS MADE IN ACCORDANCE WITH THE REQUIREMENTS OF THE STANDARDS AND PRACTICE MANUAL FOR SURVEYS IN SOUTH CAROLINA, AND MEETS OR EXCEEDS THE REQUIREMENTS FOR A CLASS "A" SURVEY AS SPECIFIED THEREIN.

NOT VALID UNLESS SIGNED AND SEALED BY:

C.S.A.

STAMP

UNPROCESSED SEAL



LEGEND

- COUNTY LINE
- ADJACENT BOUNDARY LINE (By TITLE &/or MONUMENTATION)
- RIGHT-OF-WAY (R.O.W., ROW, R/W)
- THE LINE
- WATER BODY (APPROXIMATE SCALED) - TRIBUTARY, CREEK, RIVER, etc. NOT SURVEYED
- BOUNDARY PARCELS (BOUNDARY) (THOSE WHOSE CORNERS SEE TO SCALE) (SEE SURVEYED)
- COMPUTED POINT (CP): NO MONUMENT FOUND &/or SET
- COUNTY LINE "POINT ON LINE" MARK IDENTIFIER
- POINT ON SET (P.O.S.) - #0 PER. 1/2-1/4" SCSPLC
- ALUMINUM CAP SET (ALUMINUM) (NOT OPERATED) - SEE "SURVEY MARKER CAP DETAIL"
- S.C.S.P.L.
- S.C.S.P.L. (SOUTH CAROLINA GEODETIC SURVEY)
- ANNEKEL
- SCOT
- S.C.S.P.L. (SOUTH CAROLINA DEPARTMENT OF TRANSPORTATION)
- NAD 83
- N.A.D. (NORTH AMERICA DATUM OF 1983 (2011 ADJUSTMENT))
- S.C.S.P.L. (SOUTH CAROLINA STATE PLANE COORDINATE SYSTEM) (STATE 3003, FL. HAMBURG)
- S.C.S.P.L. (SOUTH CAROLINA CODES OF LAWS)

DATE OF SURVEY: 01/11/2025
 COUNTY: ALLLENDALE & HAMPTON
 APPROVED: [Signature]
 P.E. & P.S. N/A
 P.L. & P.S. N/A
 P.L. & P.S. N/A

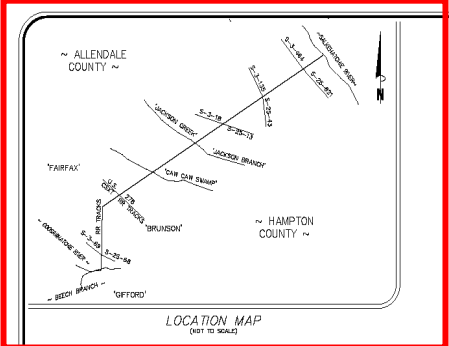
CORNERSTONE
 SURVEYING & ENGINEERING, INC.
 1202 Broomfield Rd. • Summerville • South Carolina • 29086 • Phone: 803-571-5700

THE ALLENDALE-HAMPTON COUNTY LINE
 STATING AT THE CONFLUENCE OF THE COCOSWATCHEE RIVER AND BEECH BRANCH (S.C. CODES OF LAWS, SECTION 4-3-30, ALL S.C. LEGISLATURE WEBSITE: <http://www.ncsl.org/legislativewebsite/>) AND LINE WAS RUN BY (BY TITLE &/or MONUMENTATION) [Signature] AND [Signature] FOR THE PURPOSES OF THIS PLAT. THE INTERSECTION OF THE ALLENDALE-HAMPTON COUNTY LINE AND BOUNDARY LINES OF ADJACENT PROPERTY MAY BE CORRELATED IF AND ONLY IF SO SPECIFIED BY THE SOUTH CAROLINA LEGISLATURE. ANYTHING THAT CONFLICTS WITH THE PURPOSE OF THIS COUNTY LINE PLAT IS BEING RELATED HERON. THERE IS NO WAY TO THE SURVEY OF PLAT OF THIS PORTION OF THE ALLENDALE-HAMPTON COUNTY LINE BEING SHOWN OR REFERENCED HERON.

Date of Survey: 01/11/2025
 County: ALLLENDALE & HAMPTON
 Approved: [Signature]
 P.E. & P.S. N/A
 P.L. & P.S. N/A
 P.L. & P.S. N/A

Date ReVisits Me: _____

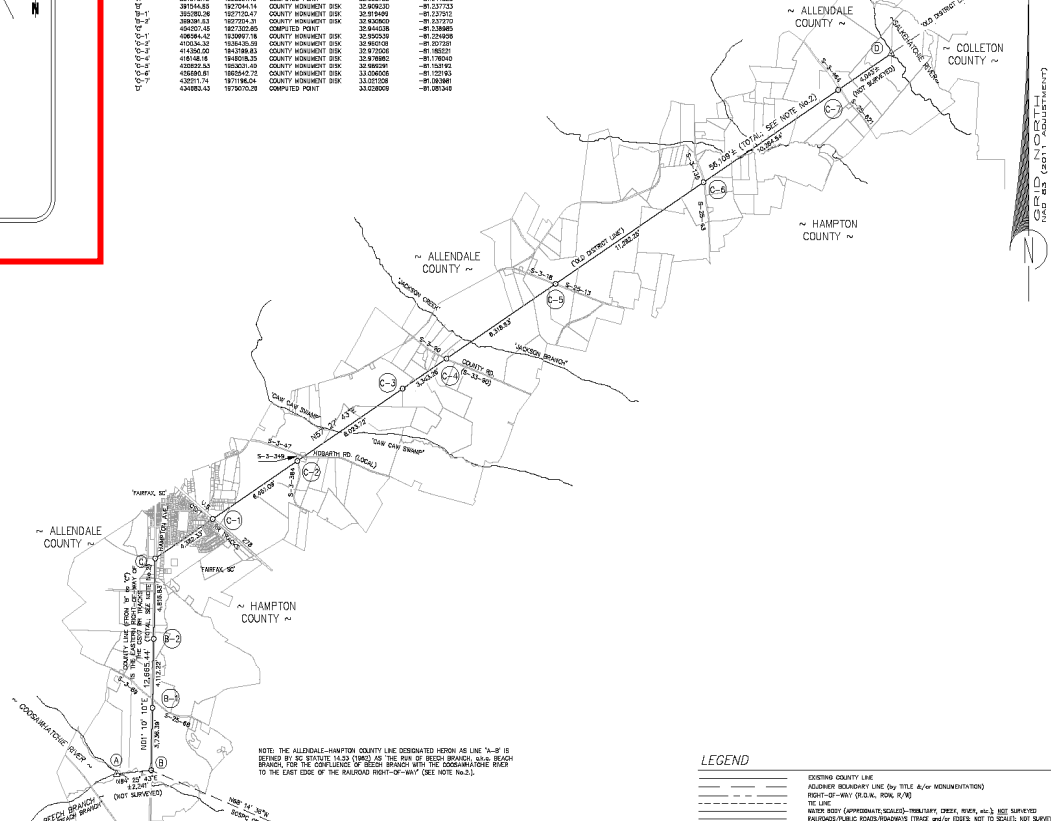
Proj. No.: 24020
 Sheet: 1 of 1



COUNTY LINE MONUMENT SUMMARY TABLE - NAD 83 (2011 Adjustment)

Monument	Starting (F1) Easting (F1)	Ending (F1)	Description	Latitude (North)	Longitude (West)	UIC	NOTE
381730.72	1825620.16		COMPUTED POINT	32.848728	-81.244323		
381740.83	1827044.14		COUNTY MONUMENT DISK	32.849028	-81.237723		
381750.28	1827724.47		COUNTY MONUMENT DISK	32.849493	-81.237217		
381841.33	1827777.84		COUNTY MONUMENT DISK	32.849528	-81.237217		
404077.45	1827202.85		COMPUTED POINT	32.844338	-81.238495		
404084.42	1825877.84		COUNTY MONUMENT DISK	32.845028	-81.238495		
410244.32	1834425.28		COUNTY MONUMENT DISK	32.851028	-81.227723		
414280.42	1825877.84		COUNTY MONUMENT DISK	32.850028	-81.238495		
418148.18	1818048.33		COUNTY MONUMENT DISK	32.847882	-81.278023		
428828.63	1826814.45		COUNTY MONUMENT DISK	32.849028	-81.238495		
436840.81	1826427.72		COUNTY MONUMENT DISK	33.026028	-81.221813		
438711.74	1871184.24		COUNTY MONUMENT DISK	33.271028	-81.203881		
434882.43	1878670.28		COMPUTED POINT	33.026028	-81.221813		

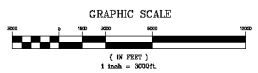
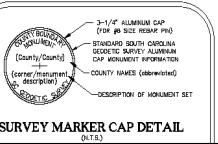
NOTE: THE ALLENDALE-HAMPTON COUNTY LINE DESIGNATED HEREIN AS LINE "A-B" IS SET BY THE BEACH BRANCH OF THE COAST GUARD AIR LINE BRANCH FOR THE COMPLETION OF BEACH BRANCH WITH THE COAST GUARD AIR LINE TO THE EAST SIDE OF THE BALDHEAD RIVER.



NOTE: THE ALLENDALE-HAMPTON COUNTY LINE DESIGNATED HEREIN AS LINE "A-B" IS SET BY THE BEACH BRANCH OF THE COAST GUARD AIR LINE BRANCH FOR THE COMPLETION OF BEACH BRANCH WITH THE COAST GUARD AIR LINE TO THE EAST SIDE OF THE BALDHEAD RIVER.

LEGEND

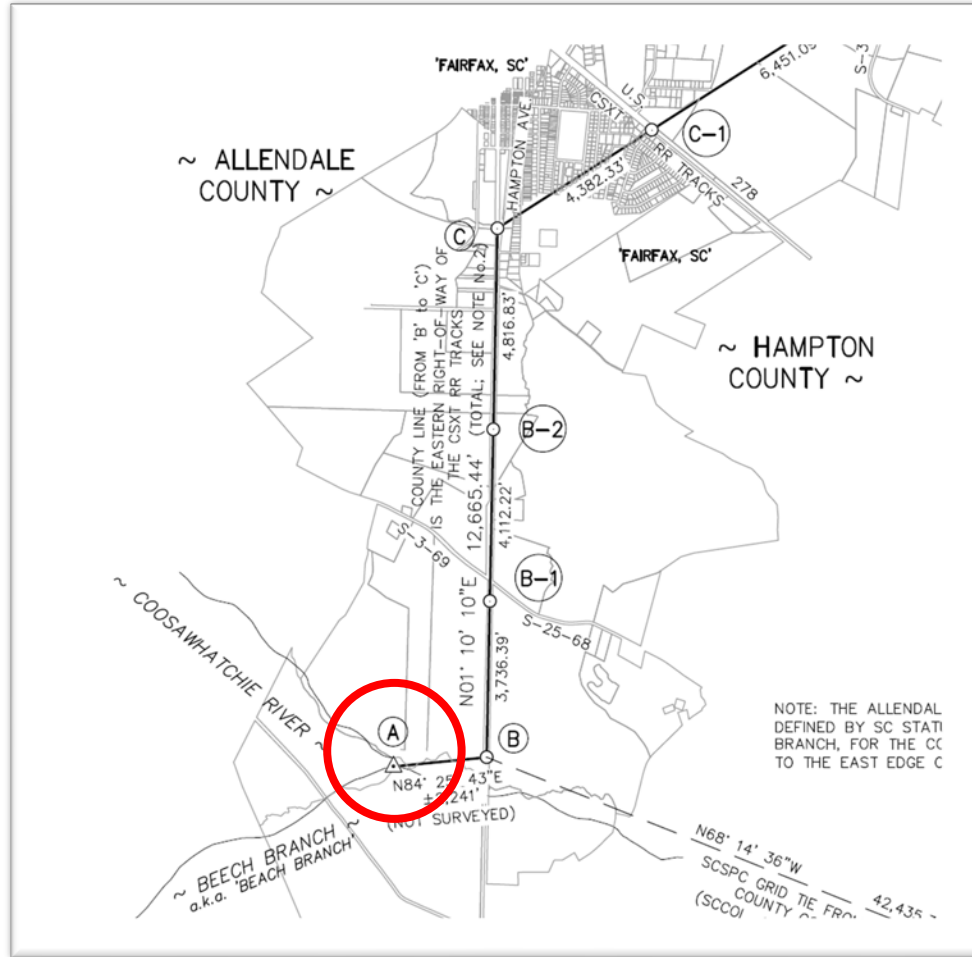
- EXISTING COUNTY LINE
- ALLENDALE BOUNDARY LINE (BY TITLE A/W MONUMENTATIONS)
- RIGHT-OF-WAY (R.O.W., ROW, R/W)
- WATER BODY (APPROXIMATE SCALED) - JACKSON CREEK, BRUNSON, etc. SEE SURVEY PHOTOGRAPHIC RECORDATIONS (THOSE WHICH COULD BE TO SCALE AND SURVEYED)
- COMPUTED POINT (CP); NO MONUMENT FOUND A/W SET
- COUNTY LINE "CORREY" IDENTIFIER
- COUNTY LINE "PORT ON LINE" MARK IDENTIFIER
- FOR PRE SET CORPS - SEE REF. W-2-1-1/2 S.C.S.S.
- ALUMINUM CAP SET (UNLESS NOTED OTHERWISE) - SEE "SURVEY MARKER CAP DETAIL"
- SOUTH CAROLINA QUADRIC SURVEY ANGLE
- SOUTH CAROLINA DEPARTMENT OF TRANSPORTATION
- NORTH AMERICA DATUM OF 1983 (EPOCH ADJUSTMENT)
- SOUTH CAROLINA STATE PLANE COORDINATE SYSTEM, ZONE 3000, FL. BALDHEAD
- SOUTH CAROLINA CODE OF LAWS



NOTES

1. THIS IS NOT A VALID TRUE COPY OF THIS DOCUMENT UNLESS IT BEARS THE ORIGINAL SIGNATURE, SIGNATURE LINE, AND THE REGISTERED PROFESSIONAL LAND SURVEYOR NOTED HEREIN.
2. THE PURPOSE OF THIS PLAT IS ONLY TO HAVE THE PORTION OF THE ALLENDALE-HAMPTON COUNTY LINE, IT IS NOT INTENDED NOR SHOULD IT BE CONSTRUED TO BE A BOUNDARY SURVEY OF BOUNDARY PARTS OF ANY OF THE PROPERTY INTERESTS ADJACENT TO THE COUNTY LINE. THE ALLENDALE-HAMPTON COUNTY LINE AND MONUMENTATIONS OF THE COUNTY LINE ARE TO BE CONSIDERED AS THE BOUNDARY LINE OF THE COUNTY LINE. THE ALLENDALE-HAMPTON COUNTY LINE IS TO BE CONSIDERED AS THE BOUNDARY LINE OF THE COUNTY LINE. THE ALLENDALE-HAMPTON COUNTY LINE IS TO BE CONSIDERED AS THE BOUNDARY LINE OF THE COUNTY LINE. THE ALLENDALE-HAMPTON COUNTY LINE IS TO BE CONSIDERED AS THE BOUNDARY LINE OF THE COUNTY LINE.
3. ANY PARCEL INFORMATION REFLECTED ON THIS PLAT IS ONLY THAT USED TO SHOW THE PUBLIC RECORD OWNERSHIP OF THE PROPERTIES ADJACENT TO THE ALLENDALE-HAMPTON COUNTY LINE. THE BEACH BRANCH OF THE COAST GUARD AIR LINE IN THE ALLENDALE AND HAMPTON REGISTERS OF DEEDS (R.O.D.) OFFICES AND DOES NOT CONSTITUTE A TITLE SEARCH, TITLE ABSTRACT, OR TITLE OPINION FOR ANY OF THE PROPERTIES NOTED HEREIN.
4. THIS PLAT HAS BEEN DONE FOR THE STATE OF SOUTH CAROLINA IN ACCORDANCE WITH THE PUBLIC RECORD ACT AND THE PUBLIC RECORD ACT OF 1978. ALL OTHER PARTS ARE SUBORDINATED TO THE PUBLIC RECORD ACT OF 1978.
5. THE SURVEY'S EVALUATION OF RELIABILITY OF ANY ENVIRONMENTAL RECORDS OR RECORDS SHOWING CHARACTERISTICS (ALONG OR ON EITHER SIDE OF THE COUNTY LINE) SHOULD INCLUDE, PROVISIONS, ORDERS, AND HAVE BEEN MADE FOR THE SUBJECT PROPERTIES, AND THIS SURVEY DOES NOT CERTIFY AS TO THE PRESENCE OR ABSENCE OF SUCH CONDITIONS.
6. ALL "NORTHING (N)" and "EASTING (E)" COORDINATES SHOWN ON THIS PLAT ARE CORRECTED TO THE SOUTH CAROLINA STATE PLANE COORDINATE SYSTEM, ZONE 3000, AND NAD 83 (2011 ADJUSTMENT). THERE IS A COUNTY LINE MONUMENT SUMMARY TABLE OF THE SOUTH CAROLINA STATE PLANE COORDINATE DATA FOR EACH CORNER AND MONUMENT SET ALONG THE ALLENDALE-HAMPTON COUNTY LINE ON THIS PLAT. NOTE THE LATITUDE AND LONGITUDE SHOWN IS IN SOCIAL, BORDERS ONLY.
7. THE ORIENTATION OF THIS PLAT IS BEING GIVEN NORTH TO THE 2011 ADJUSTMENT, ZONE 3000. ALL LINE DIMENSIONS AND DISTANCES SHOWN HEREON ARE SCALED TO THIS DATE.
8. BEACH BRANCH "WELDED BEACH BRANCH" IN S.C. LEGISLATIVE ACT DESCRIBING THE ALLENDALE-HAMPTON COUNTY LINE (SEE SOUTH CAROLINA CODE OF LAWS SECTION 4-3-30, 4-3-31, 4-3-32, 4-3-33, 4-3-34, 4-3-35, 4-3-36, 4-3-37, 4-3-38, 4-3-39, 4-3-40, 4-3-41, 4-3-42, 4-3-43, 4-3-44, 4-3-45, 4-3-46, 4-3-47, 4-3-48, 4-3-49, 4-3-50, 4-3-51, 4-3-52, 4-3-53, 4-3-54, 4-3-55, 4-3-56, 4-3-57, 4-3-58, 4-3-59, 4-3-60, 4-3-61, 4-3-62, 4-3-63, 4-3-64, 4-3-65, 4-3-66, 4-3-67, 4-3-68, 4-3-69, 4-3-70, 4-3-71, 4-3-72, 4-3-73, 4-3-74, 4-3-75, 4-3-76, 4-3-77, 4-3-78, 4-3-79, 4-3-80, 4-3-81, 4-3-82, 4-3-83, 4-3-84, 4-3-85, 4-3-86, 4-3-87, 4-3-88, 4-3-89, 4-3-90, 4-3-91, 4-3-92, 4-3-93, 4-3-94, 4-3-95, 4-3-96, 4-3-97, 4-3-98, 4-3-99, 4-3-100, 4-3-101, 4-3-102, 4-3-103, 4-3-104, 4-3-105, 4-3-106, 4-3-107, 4-3-108, 4-3-109, 4-3-110, 4-3-111, 4-3-112, 4-3-113, 4-3-114, 4-3-115, 4-3-116, 4-3-117, 4-3-118, 4-3-119, 4-3-120, 4-3-121, 4-3-122, 4-3-123, 4-3-124, 4-3-125, 4-3-126, 4-3-127, 4-3-128, 4-3-129, 4-3-130, 4-3-131, 4-3-132, 4-3-133, 4-3-134, 4-3-135, 4-3-136, 4-3-137, 4-3-138, 4-3-139, 4-3-140, 4-3-141, 4-3-142, 4-3-143, 4-3-144, 4-3-145, 4-3-146, 4-3-147, 4-3-148, 4-3-149, 4-3-150, 4-3-151, 4-3-152, 4-3-153, 4-3-154, 4-3-155, 4-3-156, 4-3-157, 4-3-158, 4-3-159, 4-3-160, 4-3-161, 4-3-162, 4-3-163, 4-3-164, 4-3-165, 4-3-166, 4-3-167, 4-3-168, 4-3-169, 4-3-170, 4-3-171, 4-3-172, 4-3-173, 4-3-174, 4-3-175, 4-3-176, 4-3-177, 4-3-178, 4-3-179, 4-3-180, 4-3-181, 4-3-182, 4-3-183, 4-3-184, 4-3-185, 4-3-186, 4-3-187, 4-3-188, 4-3-189, 4-3-190, 4-3-191, 4-3-192, 4-3-193, 4-3-194, 4-3-195, 4-3-196, 4-3-197, 4-3-198, 4-3-199, 4-3-200, 4-3-201, 4-3-202, 4-3-203, 4-3-204, 4-3-205, 4-3-206, 4-3-207, 4-3-208, 4-3-209, 4-3-210, 4-3-211, 4-3-212, 4-3-213, 4-3-214, 4-3-215, 4-3-216, 4-3-217, 4-3-218, 4-3-219, 4-3-220, 4-3-221, 4-3-222, 4-3-223, 4-3-224, 4-3-225, 4-3-226, 4-3-227, 4-3-228, 4-3-229, 4-3-230, 4-3-231, 4-3-232, 4-3-233, 4-3-234, 4-3-235, 4-3-236, 4-3-237, 4-3-238, 4-3-239, 4-3-240, 4-3-241, 4-3-242, 4-3-243, 4-3-244, 4-3-245, 4-3-246, 4-3-247, 4-3-248, 4-3-249, 4-3-250, 4-3-251, 4-3-252, 4-3-253, 4-3-254, 4-3-255, 4-3-256, 4-3-257, 4-3-258, 4-3-259, 4-3-260, 4-3-261, 4-3-262, 4-3-263, 4-3-264, 4-3-265, 4-3-266, 4-3-267, 4-3-268, 4-3-269, 4-3-270, 4-3-271, 4-3-272, 4-3-273, 4-3-274, 4-3-275, 4-3-276, 4-3-277, 4-3-278, 4-3-279, 4-3-280, 4-3-281, 4-3-282, 4-3-283, 4-3-284, 4-3-285, 4-3-286, 4-3-287, 4-3-288, 4-3-289, 4-3-290, 4-3-291, 4-3-292, 4-3-293, 4-3-294, 4-3-295, 4-3-296, 4-3-297, 4-3-298, 4-3-299, 4-3-300, 4-3-301, 4-3-302, 4-3-303, 4-3-304, 4-3-305, 4-3-306, 4-3-307, 4-3-308, 4-3-309, 4-3-310, 4-3-311, 4-3-312, 4-3-313, 4-3-314, 4-3-315, 4-3-316, 4-3-317, 4-3-318, 4-3-319, 4-3-320, 4-3-321, 4-3-322, 4-3-323, 4-3-324, 4-3-325, 4-3-326, 4-3-327, 4-3-328, 4-3-329, 4-3-330, 4-3-331, 4-3-332, 4-3-333, 4-3-334, 4-3-335, 4-3-336, 4-3-337, 4-3-338, 4-3-339, 4-3-340, 4-3-341, 4-3-342, 4-3-343, 4-3-344, 4-3-345, 4-3-346, 4-3-347, 4-3-348, 4-3-349, 4-3-350, 4-3-351, 4-3-352, 4-3-353, 4-3-354, 4-3-355, 4-3-356, 4-3-357, 4-3-358, 4-3-359, 4-3-360, 4-3-361, 4-3-362, 4-3-363, 4-3-364, 4-3-365, 4-3-366, 4-3-367, 4-3-368, 4-3-369, 4-3-370, 4-3-371, 4-3-372, 4-3-373, 4-3-374, 4-3-375, 4-3-376, 4-3-377, 4-3-378, 4-3-379, 4-3-380, 4-3-381, 4-3-382, 4-3-383, 4-3-384, 4-3-385, 4-3-386, 4-3-387, 4-3-388, 4-3-389, 4-3-390, 4-3-391, 4-3-392, 4-3-393, 4-3-394, 4-3-395, 4-3-396, 4-3-397, 4-3-398, 4-3-399, 4-3-400, 4-3-401, 4-3-402, 4-3-403, 4-3-404, 4-3-405, 4-3-406, 4-3-407, 4-3-408, 4-3-409, 4-3-410, 4-3-411, 4-3-412, 4-3-413, 4-3-414, 4-3-415, 4-3-416, 4-3-417, 4-3-418, 4-3-419, 4-3-420, 4-3-421, 4-3-422, 4-3-423, 4-3-424, 4-3-425, 4-3-426, 4-3-427, 4-3-428, 4-3-429, 4-3-430, 4-3-431, 4-3-432, 4-3-433, 4-3-434, 4-3-435, 4-3-436, 4-3-437, 4-3-438, 4-3-439, 4-3-440, 4-3-441, 4-3-442, 4-3-443, 4-3-444, 4-3-445, 4-3-446, 4-3-447, 4-3-448, 4-3-449, 4-3-450, 4-3-451, 4-3-452, 4-3-453, 4-3-454, 4-3-455, 4-3-456, 4-3-457, 4-3-458, 4-3-459, 4-3-460, 4-3-461, 4-3-462, 4-3-463, 4-3-464, 4-3-465, 4-3-466, 4-3-467, 4-3-468, 4-3-469, 4-3-470, 4-3-471, 4-3-472, 4-3-473, 4-3-474, 4-3-475, 4-3-476, 4-3-477, 4-3-478, 4-3-479, 4-3-480, 4-3-481, 4-3-482, 4-3-483, 4-3-484, 4-3-485, 4-3-486, 4-3-487, 4-3-488, 4-3-489, 4-3-490, 4-3-491, 4-3-492, 4-3-493, 4-3-494, 4-3-495, 4-3-496, 4-3-497, 4-3-498, 4-3-499, 4-3-500, 4-3-501, 4-3-502, 4-3-503, 4-3-504, 4-3-505, 4-3-506, 4-3-507, 4-3-508, 4-3-509, 4-3-510, 4-3-511, 4-3-512, 4-3-513, 4-3-514, 4-3-515, 4-3-516, 4-3-517, 4-3-518, 4-3-519, 4-3-520, 4-3-521, 4-3-522, 4-3-523, 4-3-524, 4-3-525, 4-3-526, 4-3-527, 4-3-528, 4-3-529, 4-3-530, 4-3-531, 4-3-532, 4-3-533, 4-3-534, 4-3-535, 4-3-536, 4-3-537, 4-3-538, 4-3-539, 4-3-540, 4-3-541, 4-3-542, 4-3-543, 4-3-544, 4-3-545, 4-3-546, 4-3-547, 4-3-548, 4-3-549, 4-3-550, 4-3-551, 4-3-552, 4-3-553, 4-3-554, 4-3-555, 4-3-556, 4-3-557, 4-3-558, 4-3-559, 4-3-560, 4-3-561, 4-3-562, 4-3-563, 4-3-564, 4-3-565, 4-3-566, 4-3-567, 4-3-568, 4-3-569, 4-3-570, 4-3-571, 4-3-572, 4-3-573, 4-3-574, 4-3-575, 4-3-576, 4-3-577, 4-3-578, 4-3-579, 4-3-580, 4-3-581, 4-3-582, 4-3-583, 4-3-584, 4-3-585, 4-3-586, 4-3-587, 4-3-588, 4-3-589, 4-3-590, 4-3-591, 4-3-592, 4-3-593, 4-3-594, 4-3-595, 4-3-596, 4-3-597, 4-3-598, 4-3-599, 4-3-600, 4-3-601, 4-3-602, 4-3-603, 4-3-604, 4-3-605, 4-3-606, 4-3-607, 4-3-608, 4-3-609, 4-3-610, 4-3-611, 4-3-612, 4-3-613, 4-3-614, 4-3-615, 4-3-616, 4-3-617, 4-3-618, 4-3-619, 4-3-620, 4-3-621, 4-3-622, 4-3-623, 4-3-624, 4-3-625, 4-3-626, 4-3-627, 4-3-628, 4-3-629, 4-3-630, 4-3-631, 4-3-632, 4-3-633, 4-3-634, 4-3-635, 4-3-636, 4-3-637, 4-3-638, 4-3-639, 4-3-640, 4-3-641, 4-3-642, 4-3-643, 4-3-644, 4-3-645, 4-3-646, 4-3-647, 4-3-648, 4-3-649, 4-3-650, 4-3-651, 4-3-652, 4-3-653, 4-3-654, 4-3-655, 4-3-656, 4-3-657, 4-3-658, 4-3-659, 4-3-660, 4-3-661, 4-3-662, 4-3-663, 4-3-664, 4-3-665, 4-3-666, 4-3-667, 4-3-668, 4-3-669, 4-3-670, 4-3-671, 4-3-672, 4-3-673, 4-3-674, 4-3-675, 4-3-676, 4-3-677, 4-3-678, 4-3-679, 4-3-680, 4-3-681, 4-3-682, 4-3-683, 4-3-684, 4-3-685, 4-3-686, 4-3-687, 4-3-688, 4-3-689, 4-3-690, 4-3-691, 4-3-692, 4-3-693, 4-3-694, 4-3-695, 4-3-696, 4-3-697, 4-3-698, 4-3-699, 4-3-700, 4-3-701, 4-3-702, 4-3-703, 4-3-704, 4-3-705, 4-3-706, 4-3-707, 4-3-708, 4-3-709, 4-3-710, 4-3-711, 4-3-712, 4-3-713, 4-3-714, 4-3-715, 4-3-716, 4-3-717, 4-3-718, 4-3-719, 4-3-720, 4-3-721, 4-3-722, 4-3-723, 4-3-724, 4-3-725, 4-3-726, 4-3-727, 4-3-728, 4-3-729, 4-3-730, 4-3-731, 4-3-732, 4-3-733, 4-3-734, 4-3-735, 4-3-736, 4-3-737, 4-3-738, 4-3-739, 4-3-740, 4-3-741, 4-3-742, 4-3-743, 4-3-744, 4-3-745, 4-3-746, 4-3-747, 4-3-748, 4-3-749, 4-3-750, 4-3-751, 4-3-752, 4-3-753, 4-3-754, 4-3-755, 4-3-756, 4-3-757, 4-3-758, 4-3-759, 4-3-760, 4-3-761, 4-3-762, 4-3-763, 4-3-764, 4-3-765, 4-3-766, 4-3-767, 4-3-768, 4-3-769, 4-3-770, 4-3-771, 4-3-772, 4-3-773, 4-3-774, 4-3-775, 4-3-776, 4-3-777, 4-3-778, 4-3-779, 4-3-780, 4-3-781, 4-3-782, 4-3-783, 4-3-784, 4-3-785, 4-3-786, 4-3-787, 4-3-788, 4-3-789, 4-3-790, 4-3-791, 4-3-792, 4-3-793, 4-3-794, 4-3-795, 4-3-796, 4-3-797, 4-3-798, 4-3-799, 4-3-800, 4-3-801, 4-3-802, 4-3-803, 4-3-804, 4-3-805, 4-3-806, 4-3-807, 4-3-808, 4-3-809, 4-3-810, 4-3-811, 4-3-812, 4-3-813, 4-3-814, 4-3-815, 4-3-816, 4-3-817, 4-3-818, 4-3-819, 4-3-820, 4-3-821, 4-3-822, 4-3-823, 4-3-824, 4-3-825, 4-3-826, 4-3-827, 4-3-828, 4-3-829, 4-3-830, 4-3-831, 4-3-832, 4-3-833, 4-3-834, 4-3-835, 4-3-836, 4-3-837, 4-3-838, 4-3-839, 4-3-840, 4-3-841, 4-3-842, 4-3-843, 4-3-844, 4-3-845, 4-3-846, 4-3-847, 4-3-848, 4-3-849, 4-3-850, 4-3-851, 4-3-852, 4-3-853, 4-3-854, 4-3-855, 4-3-856, 4-3-857, 4-3-858, 4-3-859, 4-3-860, 4-3-861, 4-3-862, 4-3-863, 4-3-864, 4-3-865, 4-3-866, 4-3-867, 4-3-868, 4-3-869, 4-3-870, 4-3-871, 4-3-872, 4-3-873, 4-3-874, 4-3-875, 4-3-876, 4-3-877, 4-3-878, 4-3-879, 4-3-880, 4-3-881, 4-3-882, 4-3-883, 4-3-884, 4-3-885, 4-3-886, 4-3-887, 4-3-888, 4-3-889, 4-3-890, 4-3-891, 4-3-892, 4-3-893, 4-3-894, 4-3-895, 4-3-896, 4-3-897, 4-3-898, 4-3-899, 4-3-900, 4-3-901, 4-3-902, 4-3-903, 4-3-904, 4-3-905, 4-3-906, 4-3-907, 4-3-908, 4-3-909, 4-3-910, 4-3-911, 4-3-912, 4-3-913, 4-3-914, 4-3-915, 4-3-916, 4-3-917, 4-3-918, 4-3-919, 4-3-920, 4-3-921, 4-3-922, 4-3-923, 4-3-924, 4-3-925, 4-3-926, 4-3-927, 4-3-928, 4-3-929, 4-3-930, 4-3-931, 4-3-932, 4-3-933, 4-3-934, 4-3-935, 4-3-936, 4-3-937, 4-3-938, 4-3-939, 4-3-940, 4-3-941, 4-3-942, 4-3-943, 4-3-944, 4-3-945, 4-3-946, 4-3-947, 4-3-948, 4-3-949, 4-3-950, 4-3-951, 4-3-952, 4-3-953, 4-3-954, 4-3-955, 4-3-956, 4-3-957, 4-3-958, 4-3-959, 4-3-960, 4-3-961, 4-3-962, 4-3-963, 4-3-964, 4-3-965, 4-3-966, 4-3-967, 4-3-968, 4-3-969, 4-3-970, 4-3-971, 4-3-972, 4-3-973, 4-3-974, 4-3-975, 4-3-976, 4-3-977, 4-3-978, 4-3-979, 4-3-980, 4-3-981, 4-3-982, 4-3-983, 4-3-984, 4-3-985, 4-3-986, 4-3-987, 4-3-988, 4-3-989, 4-3-990, 4-3-991, 4-3-992, 4-3-993, 4-3-994, 4-3-995, 4-3-996, 4-3-997, 4-3-998, 4-3-999, 4-4-000, 4-4-001, 4-4-002, 4-4-003, 4-4-004, 4-4-005, 4-4-006, 4-4-007, 4-4-008, 4-4-009, 4-4-010, 4-4-011, 4-4-012, 4-4-013, 4-4-014, 4-4-015, 4-4-016, 4-4-017, 4-4-018, 4-4-019, 4-4-020, 4-4-021, 4-4-022, 4-4-023, 4-4-024, 4-4-025, 4-4-026, 4-4-027, 4-4-028, 4-4-029, 4-4-030, 4-4-031, 4-4-032, 4-4-033, 4-4-034, 4-4-035, 4-4-036, 4-4-037, 4-4-038, 4-4-039, 4-4-040, 4-4-041, 4-4-042, 4-4-043, 4-4-044, 4-4-045, 4-4-046, 4-4-047, 4-4-048, 4-4-049, 4-4-050, 4-4-051, 4-4-052, 4-4-053, 4-4-054, 4-4-055, 4-4-056, 4-4-057, 4-4-058, 4-4-059, 4-4-060,

Allendale County / Hampton County Line Monument Monument A

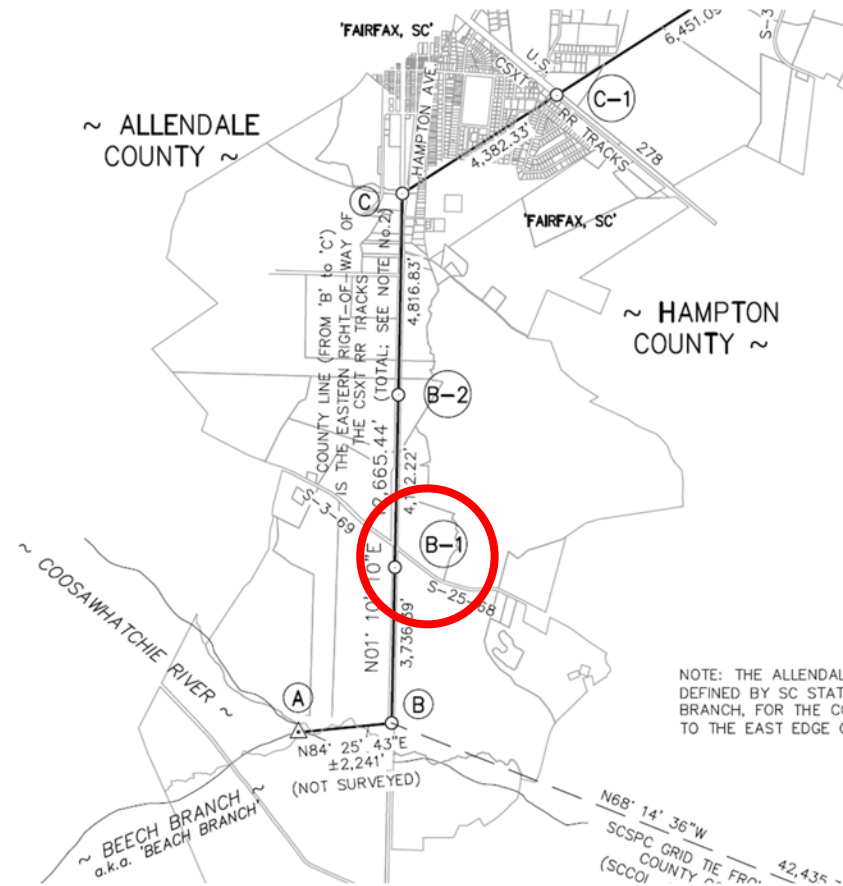


(Sheet 1 of 1)



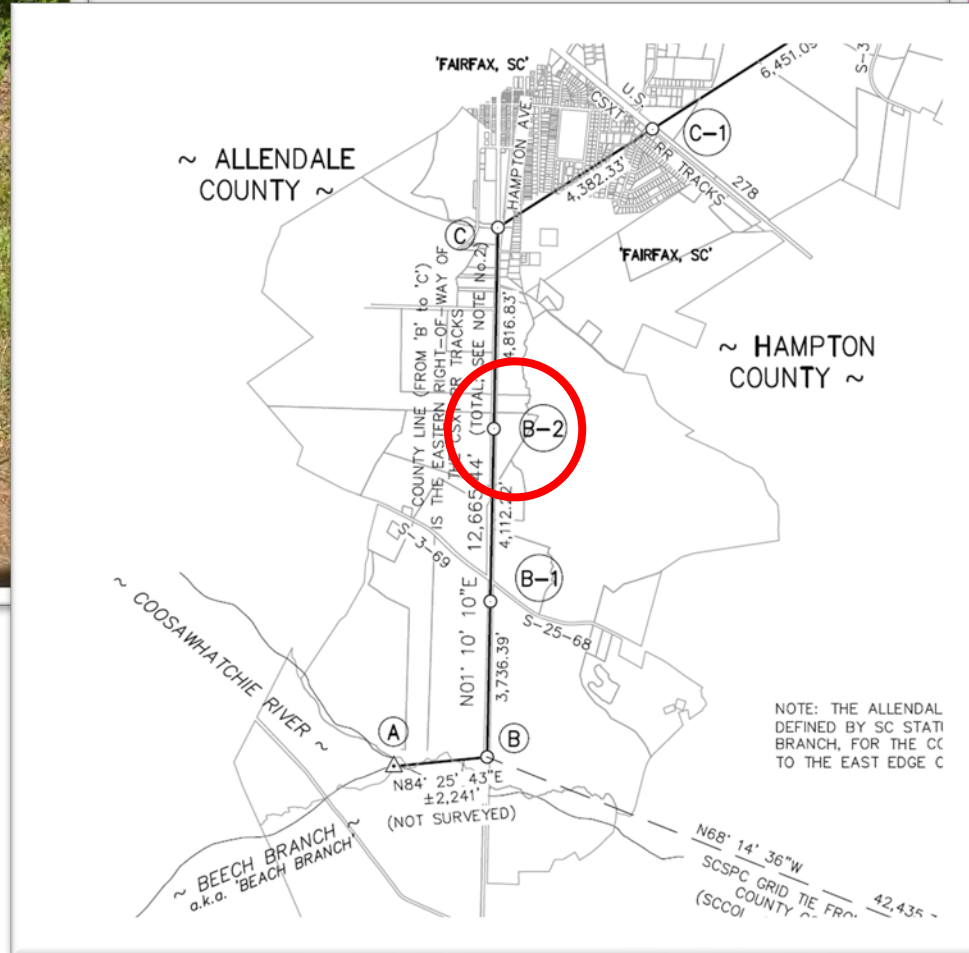
Allendale County / Hampton County Line Monument Monument B-1

(Sheet 1 of 1)



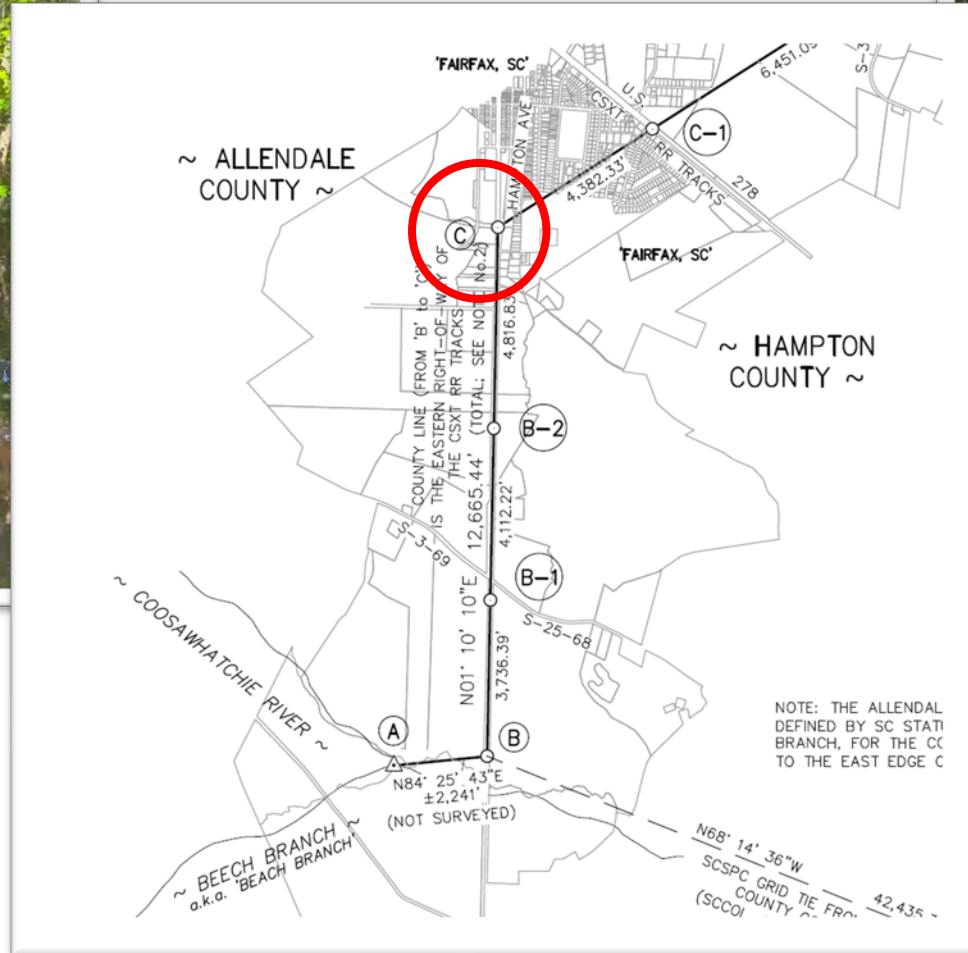
Allendale County / Hampton County Line Monument Monument B-2

(Sheet 1 of 1)



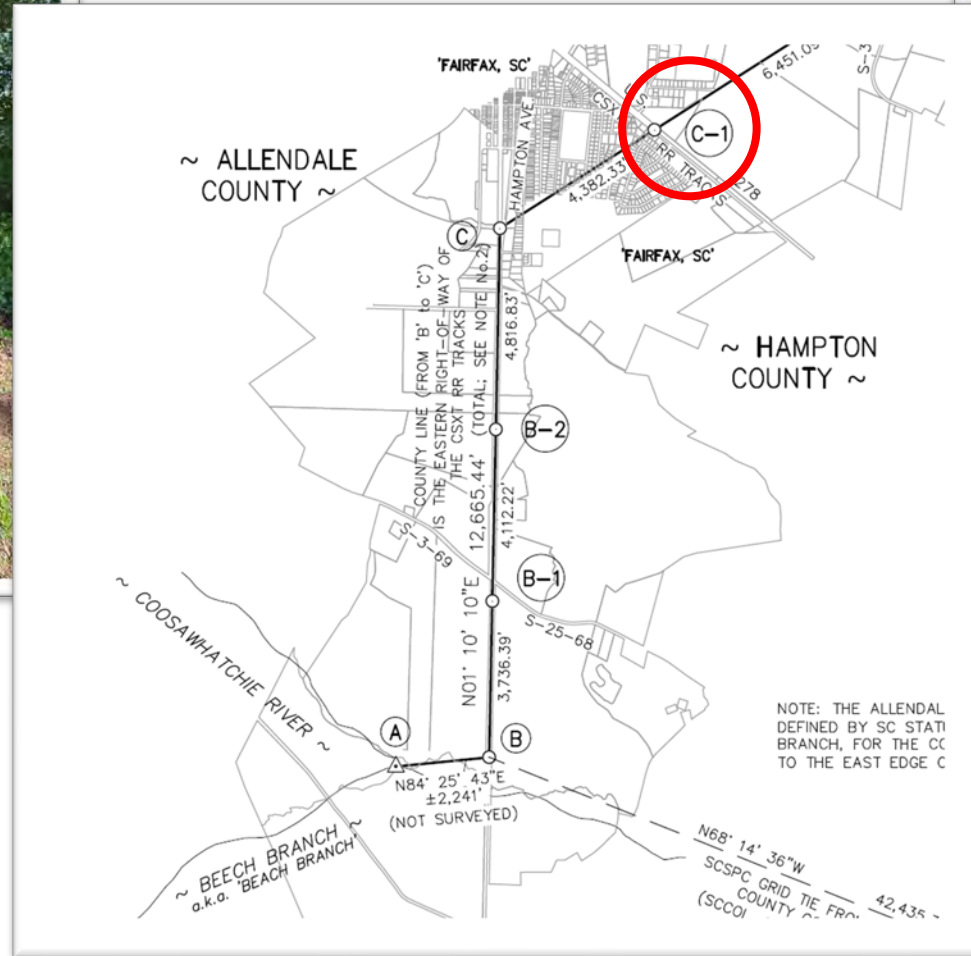
Allendale County / Hampton County Line Monument Monument C

(Sheet 1 of 1)



Allendale County / Hampton County Line Monument Monument C-1

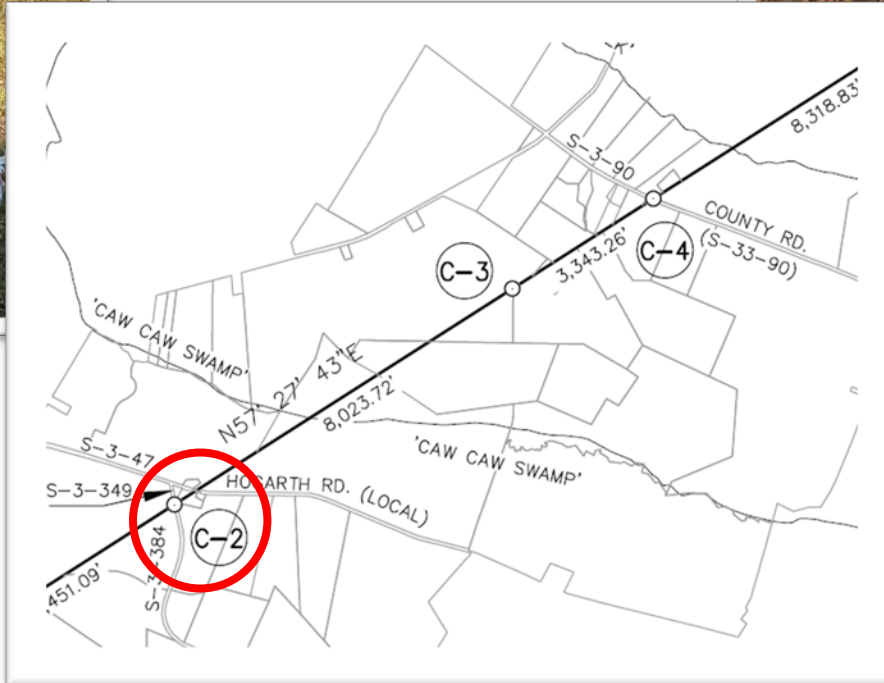
(Sheet 1 of 1)



Allendale County / Hampton County Line Monument Monument C-2



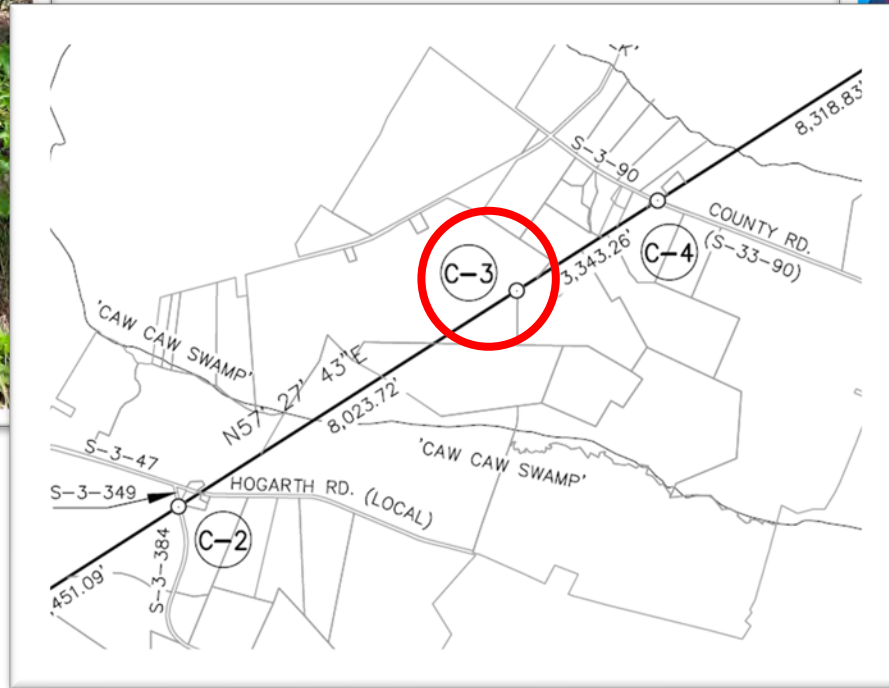
(Sheet 1 of 1)



Allendale County / Hampton County Line Monument Monument C-3



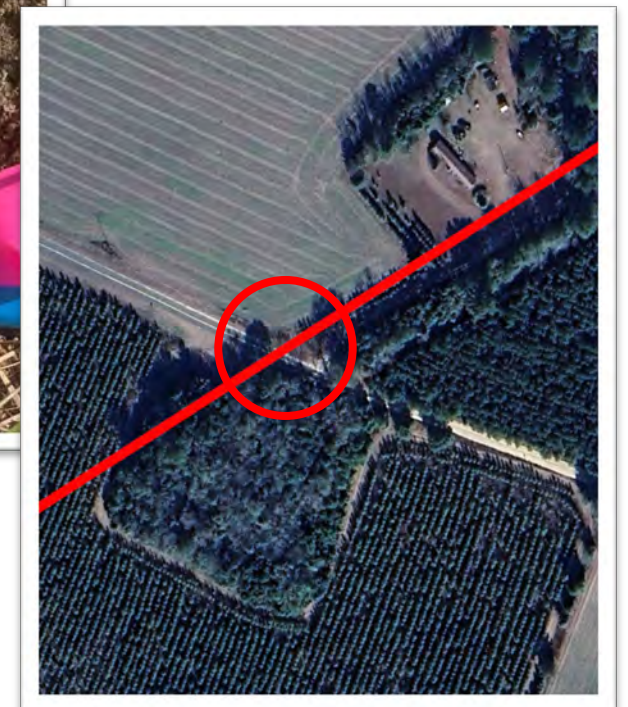
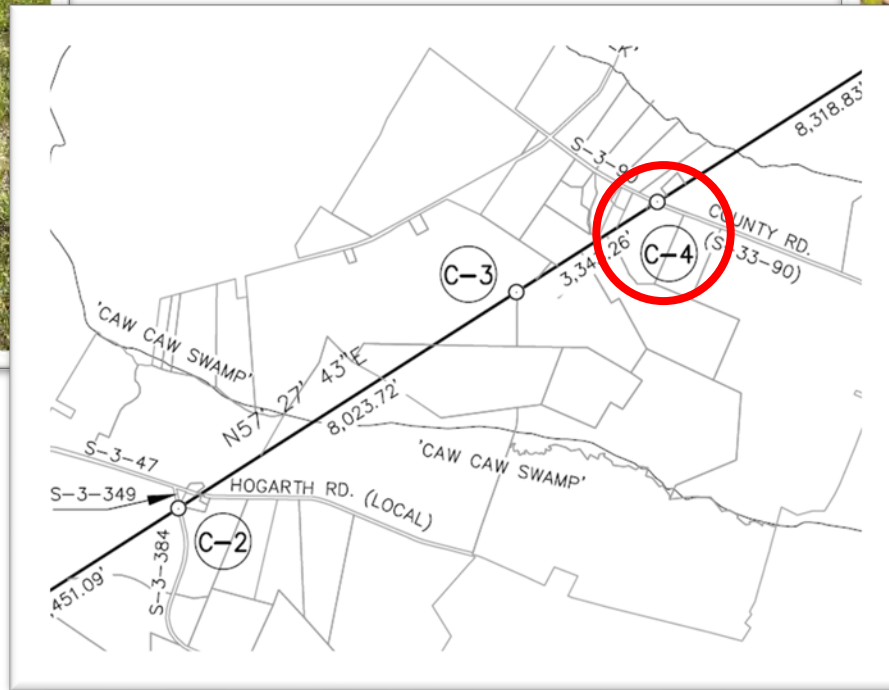
(Sheet 1 of 1)



Allendale County / Hampton County Line Monument Monument C-4



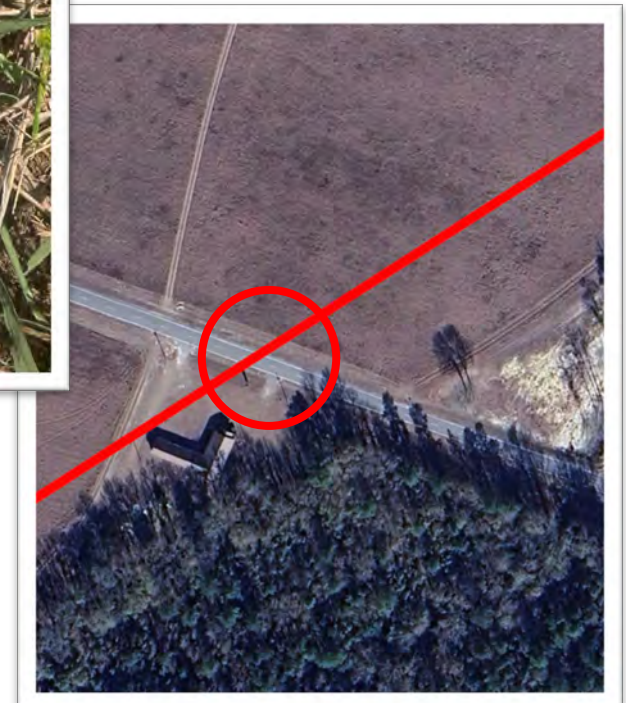
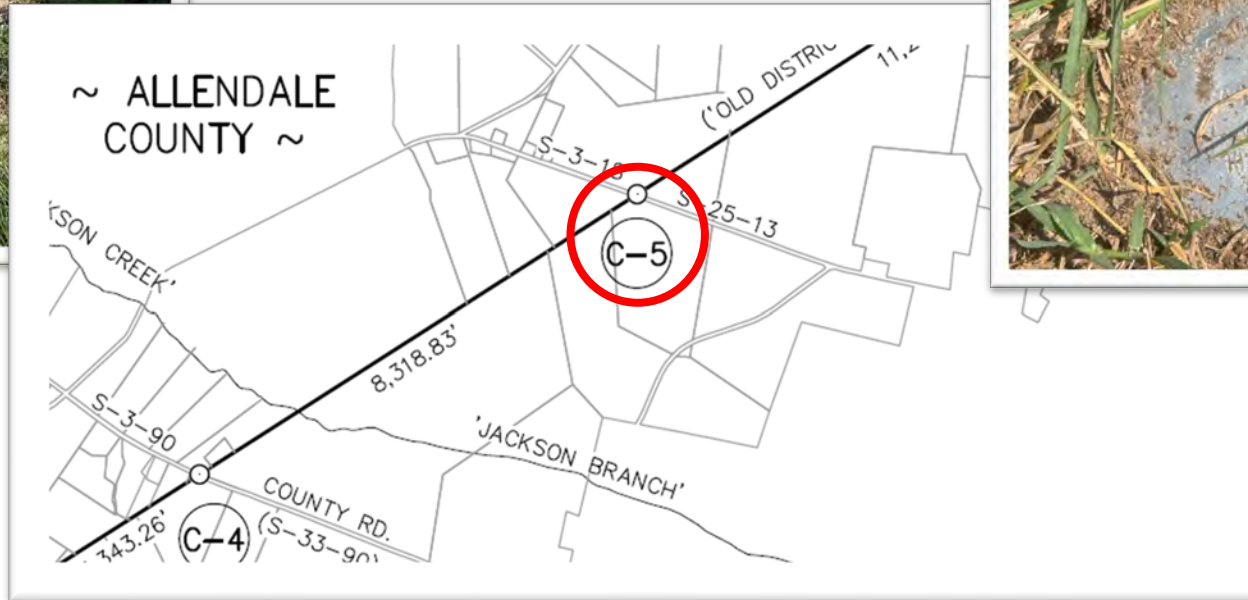
(Sheet 1 of 1)



Allendale County / Hampton County Line Monument Monument C-5



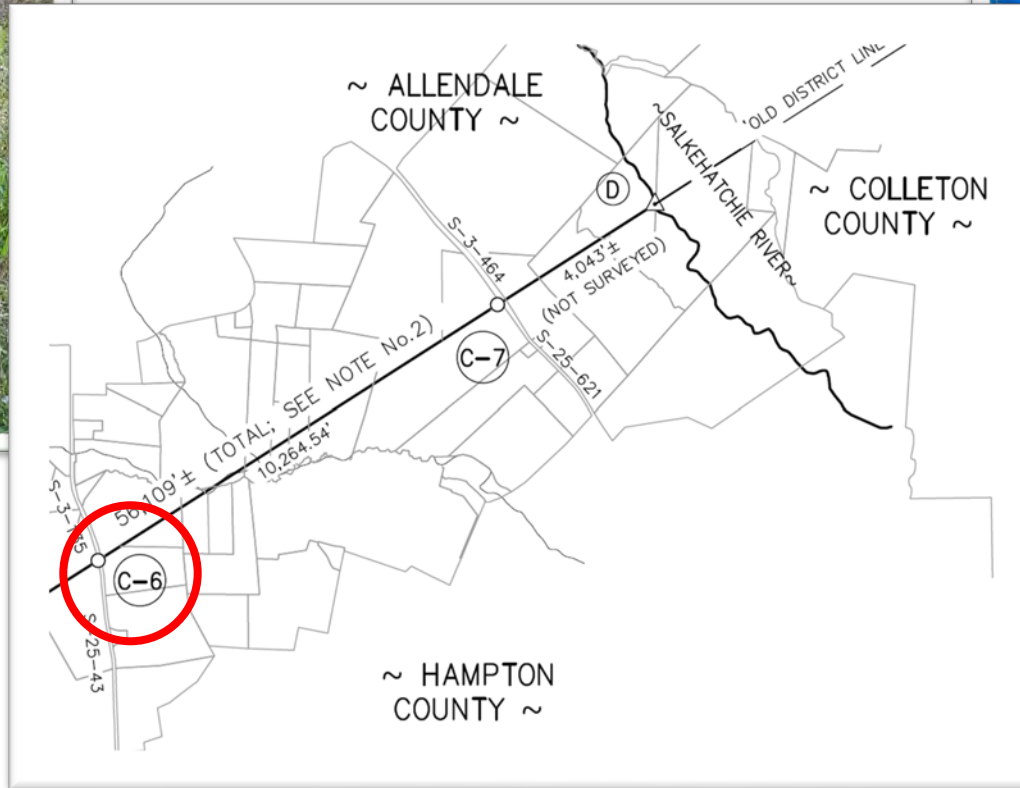
(Sheet 1 of 1)



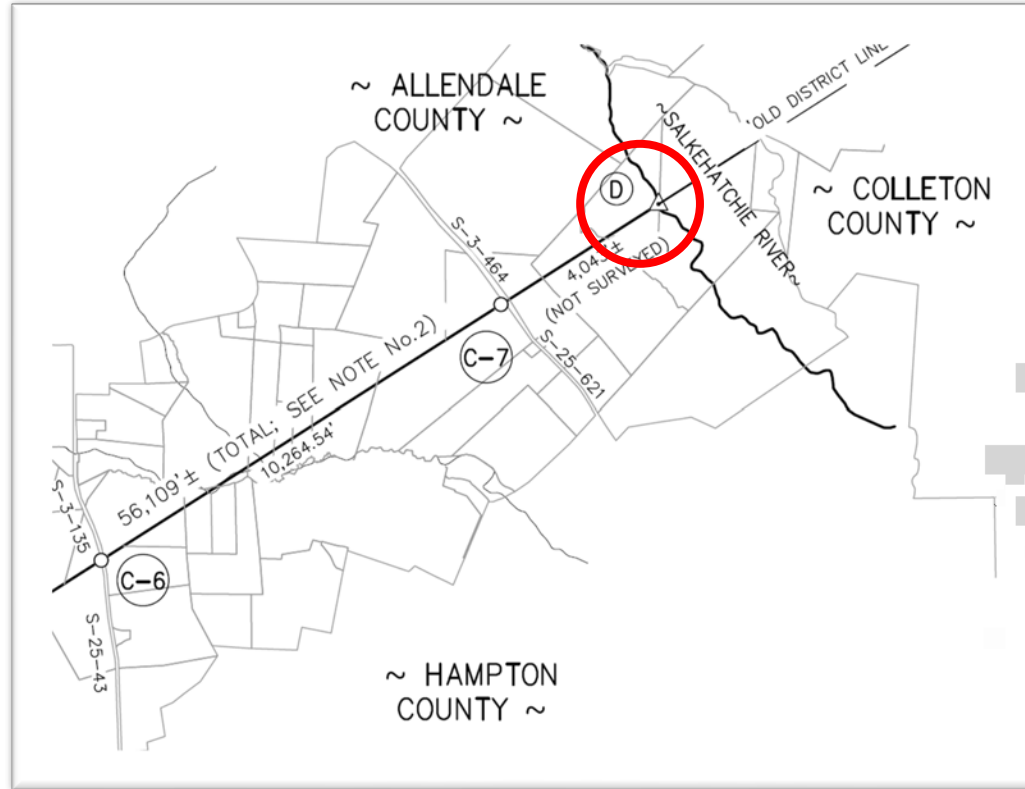
Allendale County / Hampton County Line Monument Monument C-6



(Sheet 1 of 1)



Allendale County / Hampton County Line Monument Monument D



(Sheet 1 of 1)



Project Page:

<https://rfa.sc.gov/Alle-Hamp-2>

QUESTIONS?

Or Information You Would Like to Provide?

PLEASE CALL: [803-734-3793](tel:803-734-3793)

or EMAIL: boundary@rfa.sc.gov

**We Will Work to Address Questions Promptly or Direct
Questions to the Appropriate Agency or Jurisdictional Entity**

