

EDGEFIELD - GREENWOOD COUNTY CORNER TABLE
SC GRID NAD 83 (2011) EPOCH 2010.00
INTERNATIONAL FEET

CORNER	NORTH	EAST	LAT (N)	LONG (W)	DESCRIPTION
1	775934.35	1694097.60	33°57'42.83769"	82°00'32.42794"	POINT IN LITTLE MOUNTAIN CREEK (SEE DETAIL 1) CORNER OF EDGEFIELD, SALUDA AND GREENWOOD
2	773059.48	1682833.56	33°57'13.28616"	82°02'45.82793"	SET #8 REBAR WITH DISK (SEE DETAIL 2) GREENWOOD MCCORMICK CORNER IN EDGEFIELD LINE

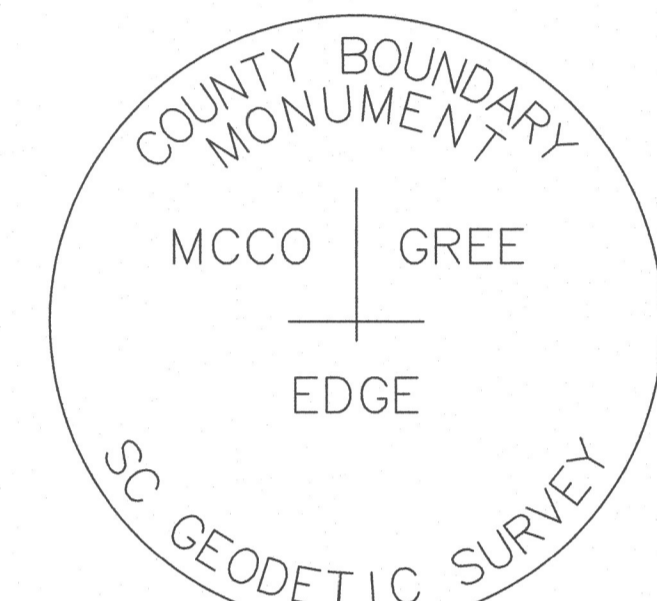
EDGEFIELD - GREENWOOD COUNTY LINE TABLE

SEGMENT (TOTAL)	(SUB-SEGMENT)	BEARING	DISTANCE (GRID)	CORNER OR POINT ON LINE
1-2		S 75°40'56" W	11625.12' (TOTAL)	1 - POINT IN LITTLE MOUNTAIN CREEK (SEE DETAIL 1) CORNER OF EDGEFIELD, SALUDA AND GREENWOOD
	(1-1A)	(83.60')		1A - SET #8 REBAR WITH DISK (SEE DETAIL 1)
	(1A-1B)	(1074.36')		1B - SET NAIL WITH WASHER IN VIRGIL WALL RD./HAMILTON RD.
	(1B-1C)	(3522.57')		1C - POINT (SEE DETAIL 1C)
	(1C-1D)	(1759.14')		1D - POINT (SEE DETAIL 1D)
	(1D-2)	(5185.45')		2 - SET #8 REBAR WITH DISK (SEE DETAIL 2) GREENWOOD MCCORMICK CORNER IN EDGEFIELD LINE

- NOTES:
- TRAVELERS ADJUSTED BY THE LEAST SQUARES ADJUSTMENT METHOD.
 - ALL DISTANCES ARE HORIZONTAL GRID DISTANCES.
 - SC GRID NAD 83 (2011) EPOCH 2010.00 BASIS OF BEARING DERIVED FROM SCGS NETWORK RTK (HORIZONTAL POSITIONAL ACCURACY = 0.07") USING GEOD MODEL GEOD18. UNITS ARE INTERNATIONAL FEET.
 - THE FIELD SURVEY WAS COMPLETED ON 09-09-2025.

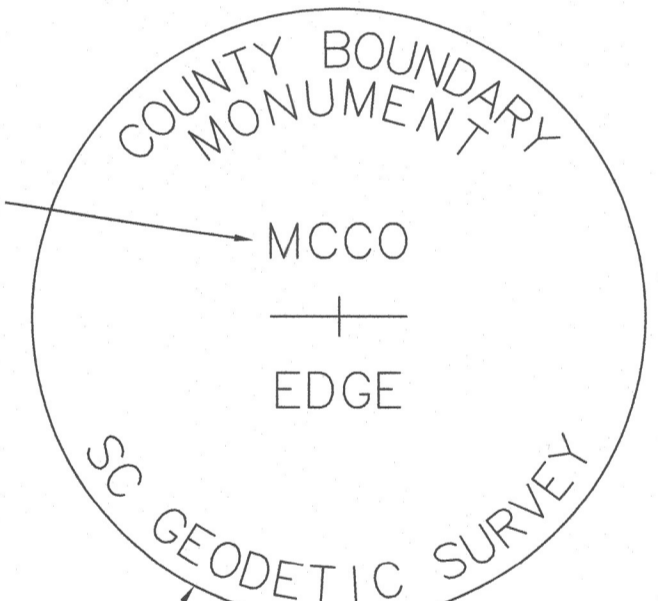
LEGEND

- EXISTING CORNER AS DESCRIBED
- SET CORNER AS DESCRIBED
- × NO POINT SET
- EXISTING S.C. GEODETIC SURVEY MONUMENT
- MB MAP BOOK
- COUNTY CORNER DESIGNATION
- POINT ON COUNTY LINE
- COUNTY LINE AS SURVEYED
- TIE LINE
- - - APPROXIMATE COUNTY BOUNDARY
- - - BOUNDARY BY DEED OR MAP
- - - APPROXIMATE ROAD (PRESENT)
- - - APPROXIMATE RIVER, CREEK OR BRANCH



DISK STAMPING FOR CORNER 2

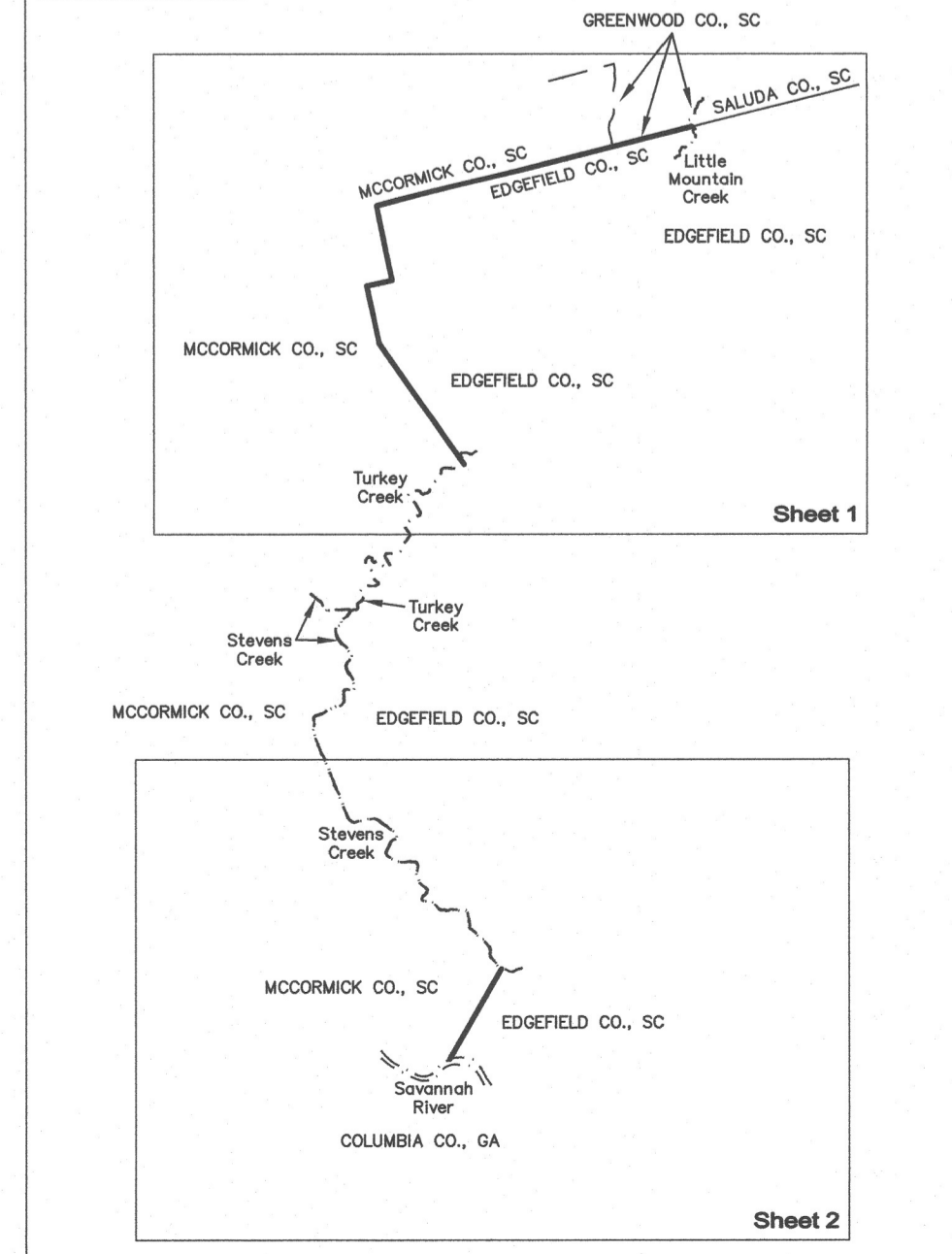
GREE (OR)



TYPICAL WASHER STAMPING (SET NAIL WITH WASHER)

TYPICAL DISK STAMPING (SET #8 REBAR WITH DISK)

OVERALL SCALE: 1"=5 MILES



EDGEFIELD - MCCORMICK COUNTY CORNER TABLE
SC GRID NAD 83 (2011) EPOCH 2010.00
INTERNATIONAL FEET

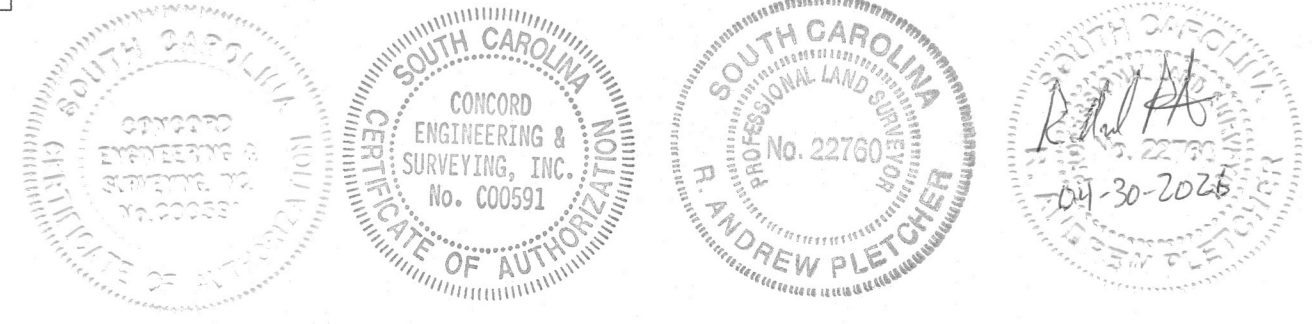
CORNER	NORTH	EAST	LAT (N)	LONG (W)	DESCRIPTION
2	773059.48	1682833.56	33°57'13.28616"	82°02'45.82793"	SET #8 REBAR WITH DISK (SEE DETAIL 2) GREENWOOD MCCORMICK CORNER IN EDGEFIELD LINE
3	764518.70	1649369.91	33°55'45.25796"	82°09'21.98761"	SET #8 REBAR WITH DISK
4	754289.41	1651615.55	33°54'04.29924"	82°08'53.98490"	SET #8 REBAR WITH DISK ON WEST SIDE OF GASTON RD.
5	753485.50	1647953.57	33°53'55.94071"	82°09'37.32787"	SET #8 REBAR WITH DISK ON EAST SIDE OF LIBERTY HILL RD.
6	745276.60	1649755.67	33°52'34.92274"	82°09'14.85844"	SET #8 REBAR WITH DISK
7	728122.14	1661826.24	33°49'46.50773"	82°06'49.48675"	POINT IN TURKEY CREEK (SEE DETAIL 7)

EDGEFIELD - MCCORMICK COUNTY LINE TABLE

SEGMENT (TOTAL)	(SUB-SEGMENT)	BEARING	DISTANCE (GRID)	CORNER OR POINT ON LINE
2-3		S 75°40'56" W	34536.37' (TOTAL)	2 - SET #8 REBAR WITH DISK (SEE DETAIL 2) GREENWOOD MCCORMICK CORNER IN EDGEFIELD LINE
	(2-2A)	(318.59')		2A - SET NAIL WITH WASHER IN US HIGHWAY 25 (SEE DETAIL 2)
	(2A-2B)	(10731.29')		2B - POINT
	(2B-2C)	(12946.64')		2C - SET #8 REBAR WITH DISK ON WEST SIDE OF SC HIGHWAY 67
	(2C-2D)	(9232.29')		2D - SET #8 REBAR WITH DISK ON WEST SIDE OF UPPER MILL RD.
	(2D-3)	(1307.56')		3 - SET #8 REBAR WITH DISK
3-4		S 12°22'54" E	10472.88' (TOTAL)	3A - SET NAIL WITH WASHER IN UPPER MILL RD.
	(3-3A)	(1029.53')		3A - SET NAIL WITH WASHER IN UPPER MILL RD.
	(3A-4)	(9443.35')		4 - SET #8 REBAR WITH DISK ON WEST SIDE OF GASTON RD.
4-5		S 77°37'06" W	3749.19' (TOTAL)	5 - SET #8 REBAR WITH DISK ON EAST SIDE OF LIBERTY HILL RD.
5-6		S 12°22'54" E	8404.38' (TOTAL)	6 - SET #8 REBAR WITH DISK
6-7		S 35°07'54" E	20975.56' (TOTAL)	6A - U.S. FOREST SERVICE DISK "823"
	(6A-6B)	(5216.41')		6B - SET #8 REBAR WITH DISK (SEE DETAIL 7)
	(6B-7)	(390.13')		7 - POINT IN TURKEY CREEK (SEE DETAIL 7)

I, R. ANDREW PLETCHER, HEREBY STATE THAT TO THE BEST OF MY PROFESSIONAL KNOWLEDGE, INFORMATION, AND BELIEF, THE SURVEY SHOWN HEREON WAS MADE IN ACCORDANCE WITH THE REQUIREMENTS OF THE STANDARDS OF PRACTICE MANUAL FOR SURVEYING IN SOUTH CAROLINA, AND MEETS OR EXCEEDS THE REQUIREMENTS FOR A CLASS A SURVEY AS SPECIFIED THEREIN.

PROFESSIONAL LAND SURVEYOR LICENSE NO. 22760



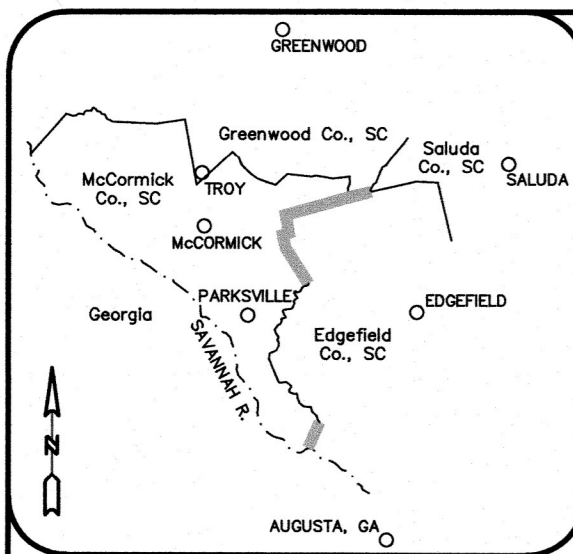
- REFERENCES:
- CODE OF LAWS OF SOUTH CAROLINA 1976; VOLUME 14, CHAPTER 3
 - BOUNDARIES OF EXISTING COUNTIES; SEC. 4-3-240 EDGEFIELD COUNTY; SEC. 4-3-290 GREENWOOD COUNTY; SEC. 4-3-400 MCCORMICK COUNTY; SEC. 4-3-470 SALUDA COUNTY.
 - U.S. GEOLOGICAL SURVEY QUADRANGLE MAPS USED: GEORGIA-SOUTH CAROLINA MCCORMICK SHEET, SURVEYED IN 1890, EDITION OF JULY 1892, REPRINTED 1899; ATHENS, GEORGIA-SOUTH CAROLINA, 1988; CLARK HILL LAKE, GEORGIA-SOUTH CAROLINA, 1980; MARTINEZ, GA, SC, 2020; CLARKS HILL, SURVEYED IN 1918-1919, EDITION OF 1920; CLARKS HILL, S.C.-GA, 1941; COLLERS, SC, 2020; LINSTONE, S.C., 1985; LINSTONE, SC, 2020; PARKSVILLE, S.C.-GA, 1964; PARKSVILLE, SC, GA, 2020; RED HILL, S.C., 1964; RED HILL, SC, 2020; WINTERSEAT, S.C., 1965; WINTERSEAT, SC, 2020.
 - SOUTH CAROLINA DEPARTMENT OF NATURAL RESOURCES LIDAR DATA; EDGEFIELD COUNTY, 2012; GREENWOOD COUNTY, 2006; MCCORMICK COUNTY, 2012; SALUDA COUNTY, 2010.
 - MAP TITLED "MAP OF THE PROPOSED COUNTY OF GREENWOOD" BY THOS. B. LEE, SURVEYED AUGUST 1894.
 - NOTES OF SURVEY OF PROPOSED COUNTY OF GREENWOOD, SOUTH CAROLINA; SURVEYED AND CERTIFIED TO BY THOS. B. LEE, AUGUST 11, 1894.
 - MAP TITLED "MAP OF GREENWOOD COUNTY SOUTH CAROLINA" BY WM. H. YELDELL AND W.A. KIRK, SURVEYED 1898; PARTY, DATED JULY, 1898.
 - MAP TITLED "EDGEFIELD DISTRICT, SOUTH CAROLINA"; SURVEYED BY THOS. ANDERSON, 1817; IMPROVED FOR MILLS' ATLAS; 1825.
 - MAP OF EDGEFIELD COUNTY, S.C. SURVEYED BY ISAAC BROOKS; DATED 1871.
 - MAP OF SALUDA COUNTY BY WM. H. YELDELL AND W.A. CROUCH; DATED FEB. 7, 1896.
 - MAP OF CALHOUN COUNTY SOUTH CAROLINA BY YELDELL AND BRITT; DATED 1894.
 - MAP OF THE PROPOSED ANNEXATION OF PART OF EDGEFIELD COUNTY TO MCCORMICK COUNTY BY THEODORE C. HAMBY, C.W. WANNAMAKER AND WILLIAM WESTON; DATED OCT. 1920.
 - MAP OF THE PROPOSED ANNEXATION OF PART OF MCCORMICK COUNTY TO EDGEFIELD COUNTY BY THEODORE C. HAMBY, C.W. WANNAMAKER AND WILLIAM WESTON; DATED OCT. 1920.
 - DRAFT MAP OF THE RE-ESTABLISHMENT OF A PORTION OF THE COMMON BOUNDARY OF EDGEFIELD AND SALUDA COUNTIES BY SOUTH CAROLINA GEODETIC SURVEY; DATED DECEMBER 7, 2023.
 - MAP TITLED "LONG CANE PURCHASE UNIT LAND OF BANK OF GREENWOOD NUMBER 14"; SURVEYED BY S.E. PUCKETTE & PARTY, DATED JULY, 1934; ALSO, THE "DESCRIPTION OF THE BOUNDARY OF THE BANK OF GREENWOOD TRACT (24)".
 - MAP TITLED "PLAT - LANDS OF MRS. CALLE SELF COKER" BY THOS. C. ANDERSON, DATED JUNE 19, 1948; GREENWOOD COUNTY MB. 23 PG. 175; GREENWOOD COUNTY MB. 35 PG. 28; GREENWOOD COUNTY MB. 9906 PG. 5062; EDGEFIELD COUNTY MB. 24 PG. 115; MCCORMICK COUNTY MB. 9 PG. 8.
 - MAP OF 1560 ACRES FOR JAMES SHEPPARD SURVEYED JANUARY 11, 1846.
 - U.S. FOREST SERVICE FIELD SHEET SURVEYED 1933-36; REVISED 1941.
 - SOUTH CAROLINA STATE HIGHWAY DEPARTMENT PLAN AND PROFILE OF PROPOSED STATE HIGHWAY F.A. PROJECT NO. 55-8-REOP, CONTRACT NO. 2, ROUTE NO. U.S. 25, DATED 11-11-1928.
 - MAP TITLED "LONG CANE PURCHASE UNIT LAND OF M.C. & J.J. DORN, INC. NUMBER 21-4"; SURVEYED BY S.E. PUCKETTE & PARTY, DATED SEPTEMBER, 1934; ALSO, THE "DESCRIPTION OF THE BOUNDARY OF THE M. G. & J. J. DORN, INC. TRACT (21-4)".
 - MAP TITLED "LONG CANE PURCHASE UNIT LAND OF J.P. LEWIS NUMBER 311"; SURVEYED BY S.E. PUCKETTE & PARTY, DATED SEPTEMBER, 1934 & JANUARY, 1935; ALSO, THE "DESCRIPTION OF THE BOUNDARY OF THE J.P. LEWIS TRACT (311)".
 - MAP TITLED "CARLAND, INC. TRACT NO. EDG. 1-1" BY E.S. ETHRIDGE; DATED 11-30-1967; MCCORMICK COUNTY MB. 2 PG. 154; EDGEFIELD COUNTY JUDGMENT ROLL 18884.
 - MAP OF TRACT NO. 5 OF MRS. E.L. HOLLINGSWORTH HOME TRACT BY A.K. BRITT; DATED NOV. 25, 1942; MCCORMICK COUNTY MB. 1 PG. 193.
 - HIGHWAY PLANS; MCCORMICK COUNTY; DOCKET NO. 33,259; ROAD 5-138; DATED 07-10-1951.
 - SOUTH CAROLINA STATE HIGHWAY DEPARTMENT PLAN AND PROFILE OF PROPOSED STATE HIGHWAY, FILE: 33,399; PROJ.: BR2-2033(2); ROAD 5-138; DATED 08-18-1983.
 - MAP TITLED "SUMNER NATIONAL FOREST (LONG CANE DIVISION) M.G. & J.J. DORN INC. TRACT (21)"; 1934-1938; ALSO, THE "DESCRIPTION OF THE BOUNDARY OF THE J.P. LEWIS TRACT (21)".
 - MAP TITLED "LONG CANE PURCHASE UNIT LAND OF J.H. BOUNIGHT NUMBER 324"; SURVEYED BY S.E. PUCKETTE & PARTY, DATED AUGUST, 1934; ALSO, THE "DESCRIPTION OF THE BOUNDARY OF THE J.H. BOUNIGHT TRACT #324".
 - MAP TITLED "W.A. REYNOLDS ESTATE TRACT (395)" BY U.S.F.S.; DATED 03-28-1940; ALSO, THE "DESCRIPTION OF THE W.A. REYNOLDS ESTATE TRACT (395)".
 - MAP BY J.M. BUSSEY; DATED JUNE 22, 1933; REVISED JULY 22, 1967; MCCORMICK COUNTY MB. 5 PG. 240.
 - MAP TITLED "BOUNDARY SURVEY FOR TRACTS 1 & 3 MILDRED G. MYERS & CLAUDE J. MYERS TRACT 2 - ETHEL H. KING, ALICE H. NICHOLS & KAY FLOYD" BY TODD SURVEYS INC.; DATED NOV. 23, 1998; MCCORMICK COUNTY MB. 20 PG. 22.
 - SOUTH CAROLINA STATE HIGHWAY DEPARTMENT PLAN AND PROFILE OF PROPOSED STATE HIGHWAY, DOCKET NO. 19,224; ROUTE NO. 283; DATED 01-17-1942.
 - SOUTH CAROLINA STATE HIGHWAY DEPARTMENT PLAN AND PROFILE OF PROPOSED STATE HIGHWAY, FEDERAL AID PROJECT NO. S132(1) PARTS 2&3; DOCKET NO. 33,324; STATE ROUTE NO. 283; DATED 02-18-1946.
 - MAP TITLED "MAP OF WASHINGTON S.D. NO. 25" BY J.M. BUSSEY; DATED MAY 19, 1924; MCCORMICK COUNTY MB. 2 PG. 15.
 - MAP TITLED "MAP OF CONSOLIDATED HIGH SCHOOL DISTRICT NO. 1 OF MCCORMICK COUNTY, S.C. CAC" BY J.M. BUSSEY; DATED APRIL 17, 1925; MCCORMICK COUNTY MB. 2 PG. 21.
 - MAP TITLED "SUMNER NATIONAL FOREST (LONG CANE DISTRICT) ELLEN MCKIE WAMBERLEE ET AL TRACT (238)"; 1934-1938; ALSO, THE "DESCRIPTION OF THE BOUNDARY OF THE ELLEN MCKIE WAMBERLEE ET AL TRACT (238)".
 - MAP OF 919 ACRES FOR JOHN FURRY SURVEYED DECEMBER 8, 1912.
 - MAP OF 2806 ACRES FOR JOSEPH CRAFTON SURVEYED MARCH 21, 1833.

Re-Establishment of the Edgefield County and Greenwood County Boundary from Saluda County West to McCormick County and the Edgefield County and McCormick County Boundary from Greenwood County South to the Savannah River EDGEFIELD, GREENWOOD AND MCCORMICK COUNTIES, S.C.

SURVEY FOR:
SC GEODETIC SURVEY PROGRAM
1000 ASSEMBLY ST. REMBERT DENNIS BUILDING
COLUMBIA, SC 29201

DATE: 04-30-2026 COMPUTED BY: RAP
SCALE: 1" = 3000' DRAWN BY: RAP
JOB NO.: 240502.000 CHECKED BY: FAR
ACAD FILE: Sggrid2011.dwg

Civil - Geotechnical - Surveying
45 SPRING STREET SW CONCORD (704) 786-5404
CONCORD, NC 28025 FAX (704) 786-7454
S.C. CERTIFICATE OF AUTHORIZATION NO. C00591



VICINITY MAP
NOT TO SCALE

LEGEND

- EXISTING CORNER AS DESCRIBED
- SET CORNER AS DESCRIBED
- ⊗ NO POINT SET
- EXISTING S.C. GEODETIC SURVEY MONUMENT
- MB. MAP BOOK
- COUNTY CORNER DESIGNATION
- POINT ON COUNTY LINE
- COUNTY LINE AS SURVEYED
- - - TIE LINE
- - - APPROXIMATE COUNTY BOUNDARY
- - - BOUNDARY BY DEED OR MAP
- - - APPROXIMATE ROAD (PRESENT)
- - - APPROXIMATE RIVER, CREEK OR BRANCH

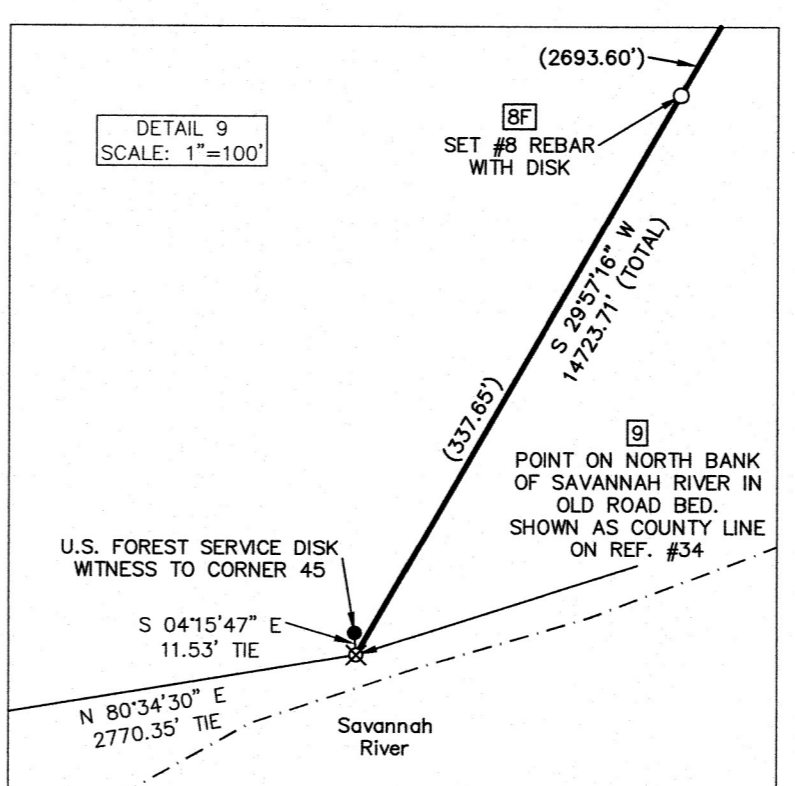
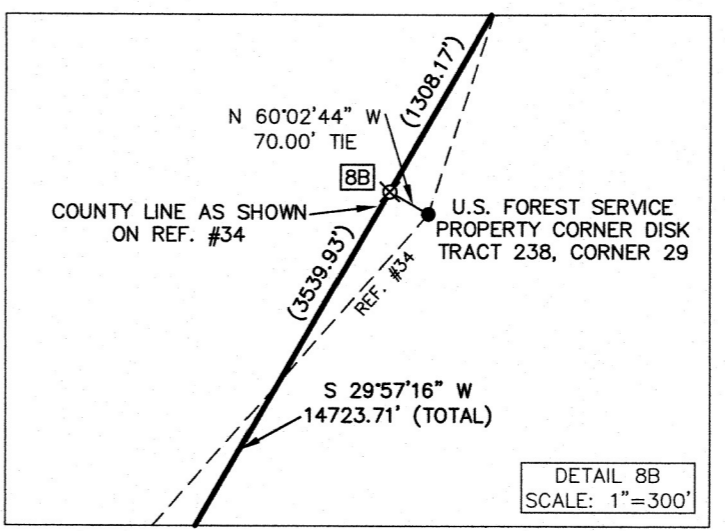
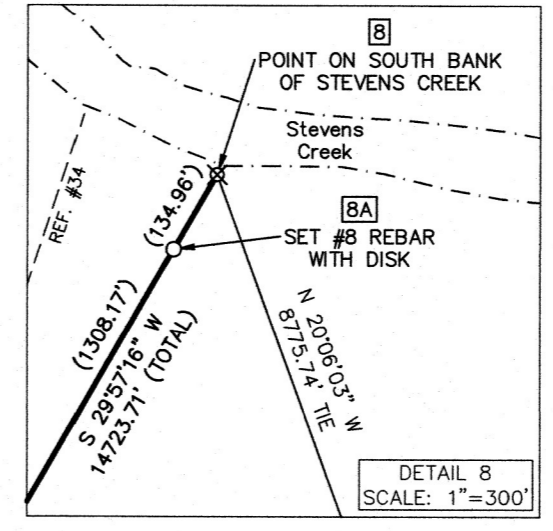
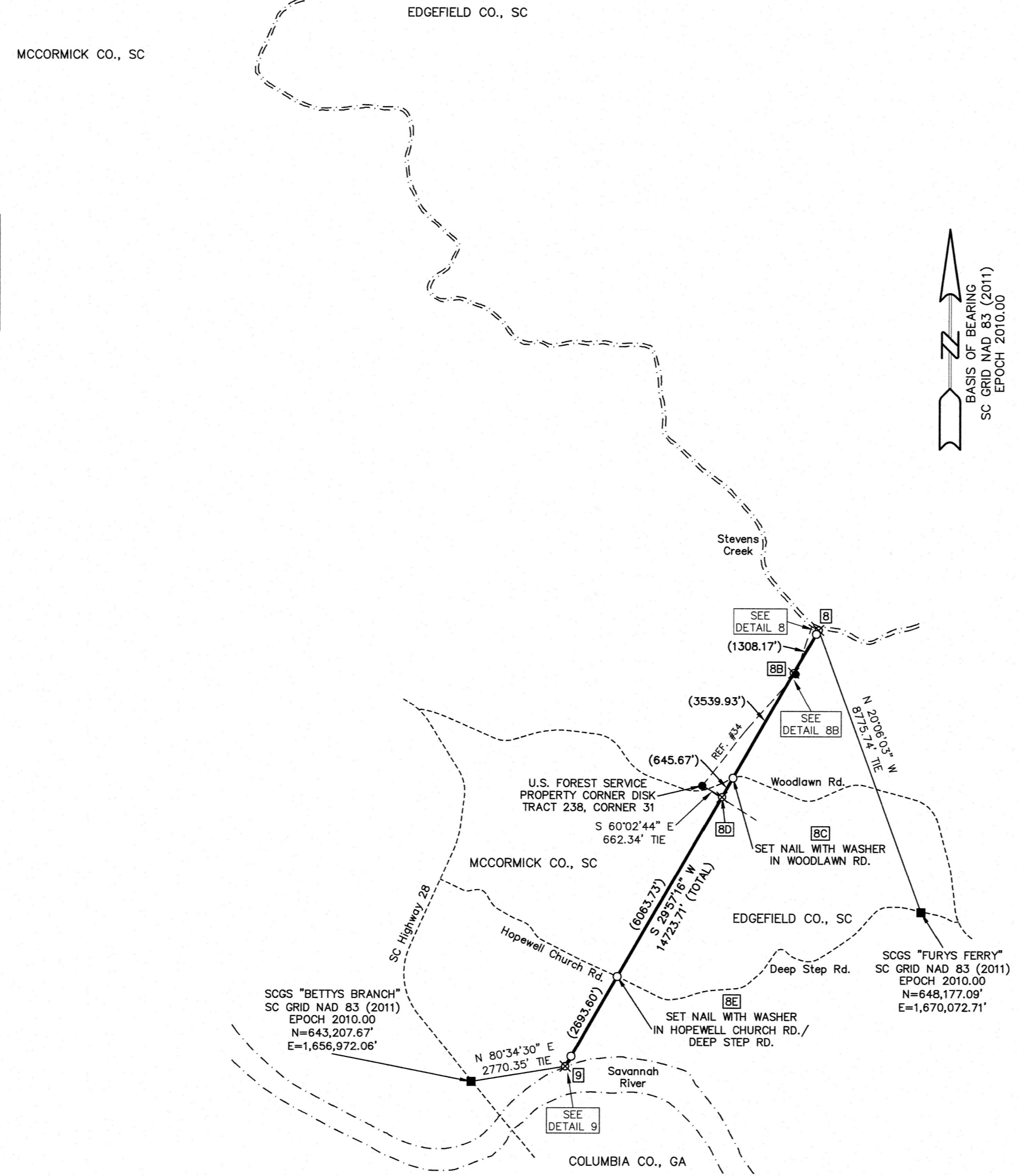
- NOTES:**
1. TRAVERSES ADJUSTED BY THE LEAST SQUARES ADJUSTMENT METHOD.
 2. ALL DISTANCES ARE HORIZONTAL GRID DISTANCES.
 3. SC GRID NAD 83 (2011) EPOCH 2010.00 BASIS OF BEARING DERIVED FROM SCOS NETWORK RIK (HORIZONTAL POSITIONAL ACCURACY = 0.07") USING GEOID MODEL GEOID18. UNITS ARE INTERNATIONAL FEET.
 4. THE FIELD SURVEY WAS COMPLETED ON 05-09-2025.

EDGEFIELD - MCCORMICK COUNTY CORNER TABLE
SC GRID NAD 83 (2011) EPOCH 2010.00
INTERNATIONAL FEET

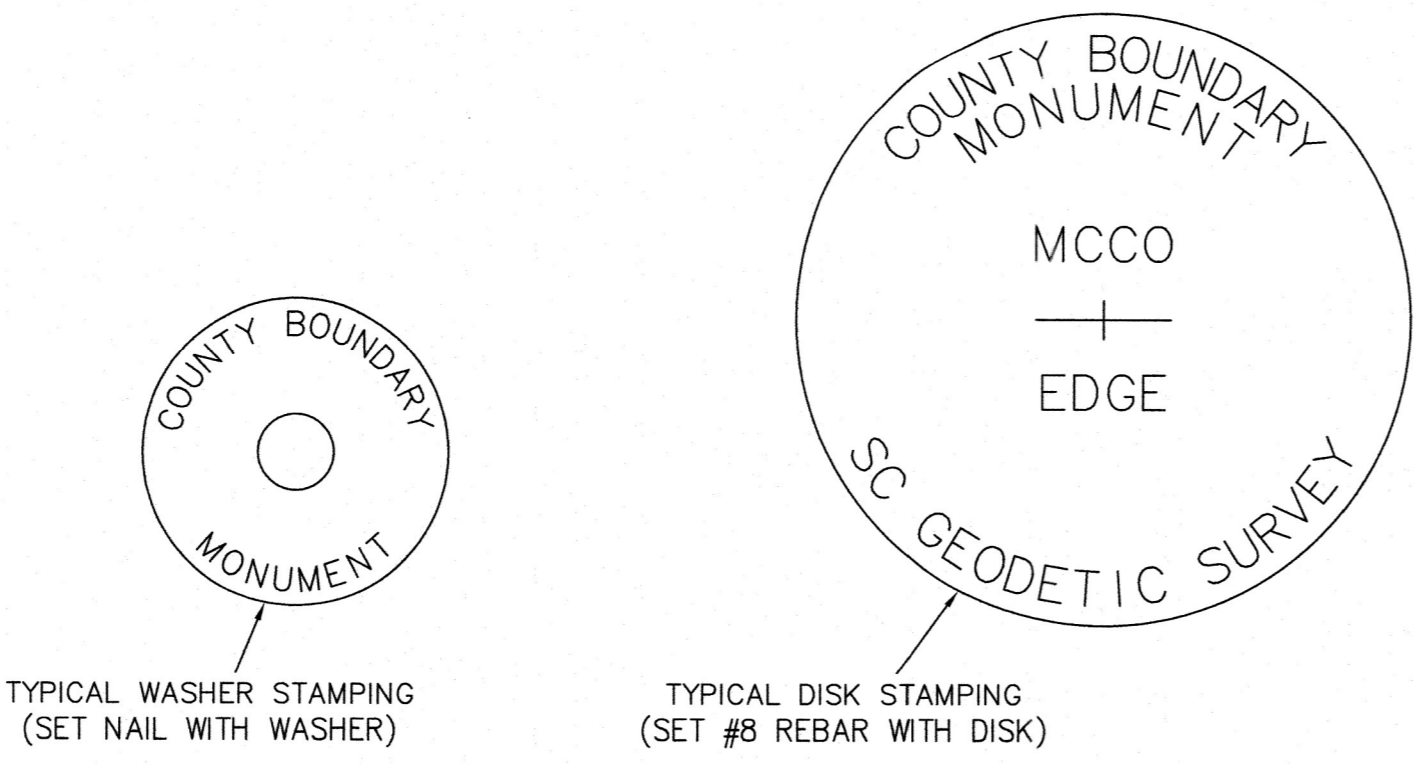
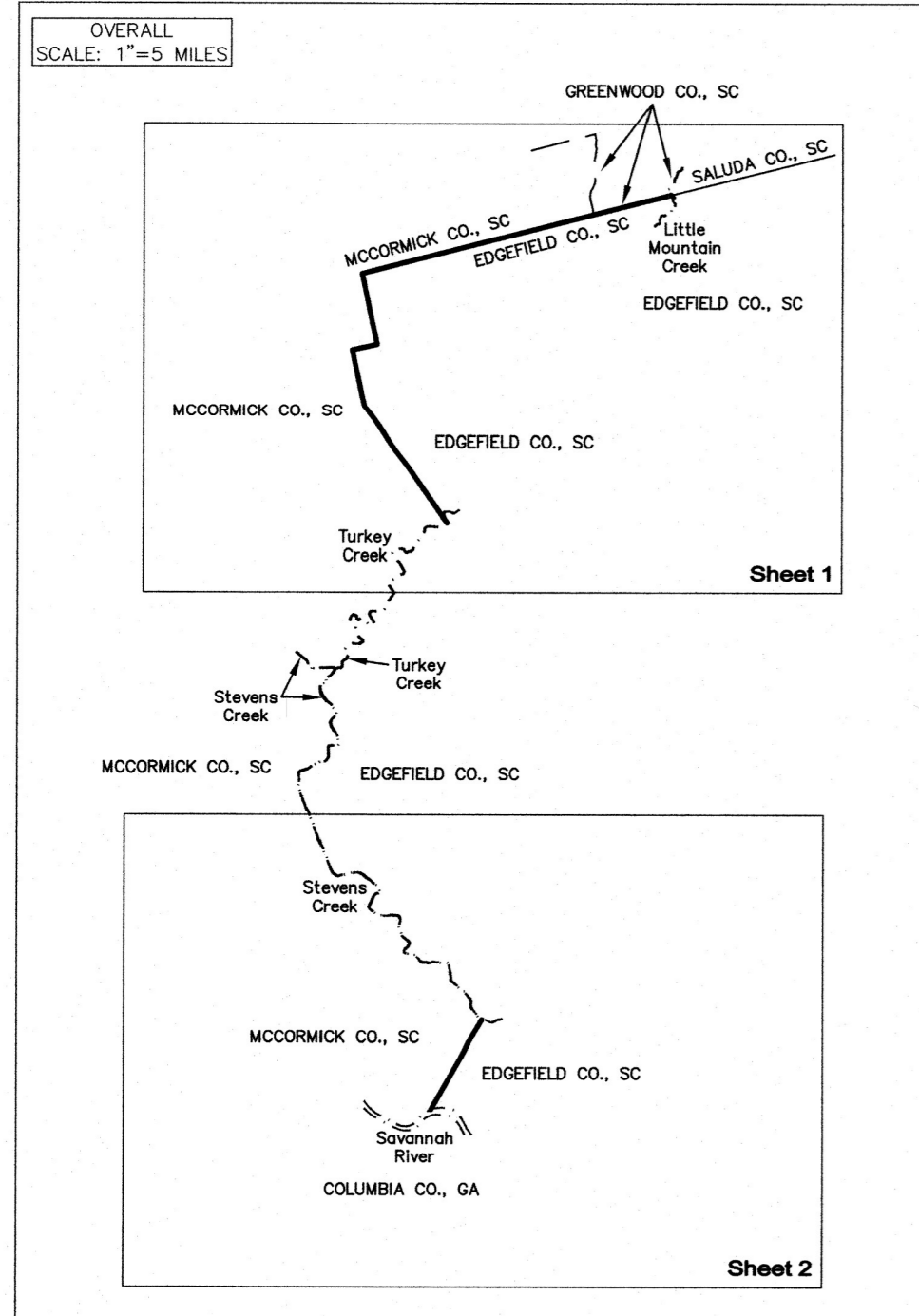
CORNER	NORTH	EAST	LAT (N)	LONG (W)	DESCRIPTION
8	656418.29	1667056.72	33°37'57.60679"	82°05'38.47809"	POINT ON SOUTH BANK OF STEVENS CREEK (SEE DETAIL 8)
9	643661.34	1659705.02	33°35'50.60583"	82°07'03.80476"	POINT ON NORTH BANK OF SAVANNAH RIVER (SEE DETAIL 9)

EDGEFIELD - MCCORMICK COUNTY LINE TABLE

SEGMENT (TOTAL)	(SUB-SEGMENT)	BEARING	DISTANCE (GRID)	CORNER OR POINT ON LINE
8-9	(8-8A)	S 29°57'16" W	14723.71' (TOTAL)	8 - POINT ON SOUTH BANK OF STEVENS CREEK (SEE DETAIL 8)
	(8A-8B)		(134.96')	8A - SET #8 REBAR WITH DISK (SEE DETAIL 8)
	(8B-8C)		(1308.17')	8B - POINT (SEE DETAIL 8B)
	(8C-8D)		(3539.93')	8C - SET NAIL WITH WASHER IN WOODLAWN RD.
	(8D-8E)		(645.67')	8D - POINT
	(8E-8F)		(6063.73')	8E - SET NAIL WITH WASHER IN HOPEWELL CHURCH RD./DEEP STEP RD.
	(8F-9)		(2693.60')	8F - SET #8 REBAR WITH DISK (SEE DETAIL 9)
	(9)		(337.65')	9 - POINT ON NORTH BANK OF SAVANNAH RIVER (SEE DETAIL 9)

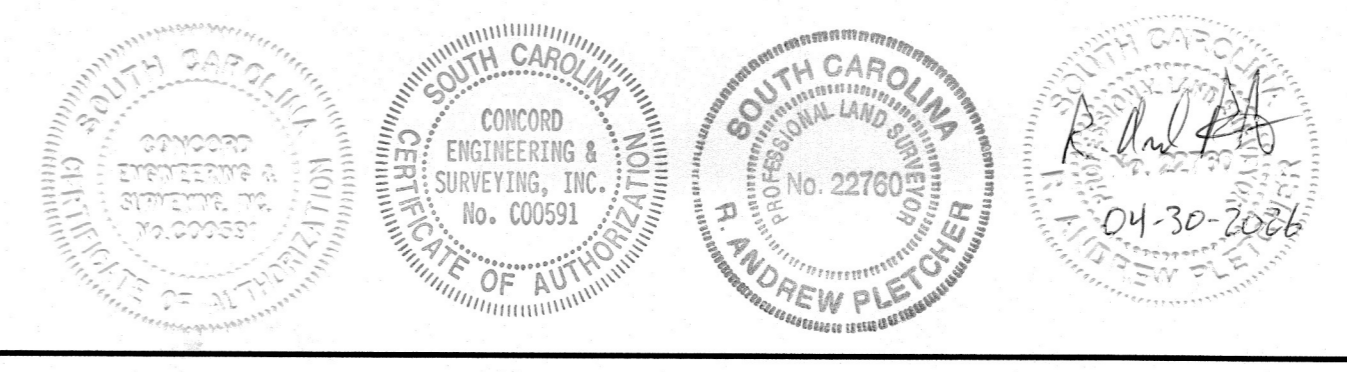


- REFERENCES:**
1. CODE OF LAWS OF SOUTH CAROLINA 1976; VOLUME 1A; CHAPTER 3 BOUNDARIES OF EXISTING COUNTIES; SEC. 4-3-240 EDGEFIELD COUNTY; SEC. 4-3-280 GREENWOOD COUNTY; SEC. 4-3-400 MCCORMICK COUNTY; SEC. 4-3-470 SALUDA COUNTY.
 2. U.S. GEOLOGICAL SURVEY QUADRANGLE MAPS USED: GEORGIA-SOUTH CAROLINA MCCORMICK SHEET, SURVEYED IN 1890, EDITION OF JULY 1892, REPRINTED 1899; ATHENS, GEORGIA-SOUTH CAROLINA, 1898; CLARK HILL LAKE, GEORGIA-SOUTH CAROLINA, 1980; MARTINEZ, GA, SC, 2020; CLARK'S HILL, SURVEYED IN 1918-1919, EDITION OF 1920; CLARK'S HILL, S.C.-GA, 1941; COLLIER'S, S.C., 2020; LIMESTONE, S.C., 1965; LIMESTONE, SC, 2020; PARKSVILLE, S.C.-GA, 1964; PARKSVILLE, SC, GA, 2020; RED HILL, S.C., 1964; RED HILL, SC, 2020; WINTERSEAT, S.C., 1965; WINTERSEAT, SC, 2020.
 3. SOUTH CAROLINA DEPARTMENT OF NATURAL RESOURCES LIDAR DATA; EDGEFIELD COUNTY, 2012; GREENWOOD COUNTY, 2008; MCCORMICK COUNTY, 2012; SALUDA COUNTY, 2010.
 4. MAP TITLED "MAP OF THE PROPOSED COUNTY OF GREENWOOD" BY THOS. B. LEE; SURVEYED AUGUST 1894.
 5. NOTES OF SURVEY OF PROPOSED COUNTY OF GREENWOOD, SOUTH CAROLINA; SURVEYED AND CERTIFIED TO BY THOS. B. LEE; AUGUST 11, 1894.
 6. MAP TITLED "MAP OF GREENWOOD COUNTY SOUTH CAROLINA" BY WM. H. YELDELL AND W.J. KIRK; SURVEYED 1898.
 7. MAP TITLED "EDGEFIELD DISTRICT, SOUTH CAROLINA", SURVEYED BY THOS. ANDERSON, 1817; IMPROVED FOR MILLS' ATLAS; 1825.
 8. MAP OF EDGEFIELD COUNTY, S.C. SURVEYED BY ISAAC BOLES; DATED 1871.
 9. MAP OF SALUDA COUNTY BY WM. H. YELDELL AND W.A. CROUCH; DATED FEB. 7, 1896.
 10. MAP OF CALHOUN COUNTY SOUTH CAROLINA BY YELDELL AND BRITT; DATED 1904.
 11. MAP OF THE PROPOSED ANNEXATION OF PART OF EDGEFIELD COUNTY TO MCCORMICK COUNTY BY THEOD. C. HAMBY, C.W. WANNAMAKER AND WILLIAM WESTON; DATED OCT. 1920.
 12. MAP OF THE PROPOSED ANNEXATION OF PART OF MCCORMICK COUNTY TO EDGEFIELD COUNTY BY THEOD. C. HAMBY, C.W. WANNAMAKER AND WILLIAM WESTON; DATED OCT. 1920.
 13. DRAFT MAP OF THE RE-ESTABLISHMENT OF A PORTION OF THE COMMON BOUNDARY OF EDGEFIELD AND SALUDA COUNTIES BY SOUTH CAROLINA GEODETIC SURVEY; DATED DECEMBER 7, 2023.
 14. MAP TITLED "LONG CANE PURCHASE UNIT LAND OF BANK OF GREENWOOD NUMBER 24"; SURVEYED BY S.E. PUCKETTE & PARTY; DATED JULY, 1934; ALSO, THE "DESCRIPTION OF THE BOUNDARY OF THE BANK OF GREENWOOD TRACT (24)".
 15. MAP TITLED "PLAT - LANDS OF MRS. CALLIE SELF COKER" BY THOS. C. ANDERSON; DATED JUNE 19, 1948; GREENWOOD COUNTY MB. 23 PG. 175, GREENWOOD COUNTY MB. 35 PG. 28, GREENWOOD COUNTY MB. 8066 PG. 5062; EDGEFIELD COUNTY MB. 24 PG. 115; MCCORMICK COUNTY MB. 9 PG. 8.
 16. MAP OF 1660 ACRES FOR JAMES SHEPPARD SURVEYED JANUARY 11, 1846.
 17. US FOREST SERVICE FIELD SHEETS SURVEYED 1933-36; REVISED 1940.
 18. SOUTH CAROLINA STATE HIGHWAY DEPARTMENT PLAN AND PROFILE OF PROPOSED STATE HIGHWAY; F.A. PROJECT NO. 55-B-REOP. CONTRACT NO. 2; ROUTE NO. U.S. 26; DATED 11-13-1928.
 19. MAP TITLED "LONG CANE PURCHASE UNIT LAND OF M.G. & J.J. DORN, INC. NUMBER 21-a"; SURVEYED BY S.E. PUCKETTE & PARTY; DATED SEPTEMBER, 1934; ALSO, THE "DESCRIPTION OF THE BOUNDARY OF THE M. G. & J. J. DORN, INC. TRACT (21-a)".
 20. MAP TITLED "LONG CANE PURCHASE UNIT LAND OF J.P. LEWIS NUMBER 311"; SURVEYED BY S.E. PUCKETTE & PARTY; DATED SEPTEMBER, 1934 & JANUARY, 1935; ALSO, THE "DESCRIPTION OF THE J.P. LEWIS TRACT (311)".
 21. MAP TITLED "CARLAND, INC. TRACT NO. EDG. 1-1" BY E.S. ETHRIDGE; DATED 11-30-1967; MCCORMICK COUNTY MB. 2 PG. 154; EDGEFIELD COUNTY JUDGMENT ROLL 18864.
 22. MAP OF TRACT NO. 5 OF MRS. E.L. HOLLINGSWORTH HOME TRACT BY A.K. BRITT; DATED NOV. 25, 1942; MCCORMICK COUNTY MB. 1 PG. 193; DATED 07-10-1951.
 23. HIGHWAY PLANS; MCCORMICK COUNTY; DOCKET NO. 33-259; ROAD S-138; DATED 07-10-1951.
 24. SOUTH CAROLINA STATE HIGHWAY DEPARTMENT PLAN AND PROFILE OF PROPOSED STATE HIGHWAY; FILE: 33.399; PROJ.: BRZ-2033(2); ROAD S-138; DATED 08-18-1983.
 25. MAP TITLED "SUMTER NATIONAL FOREST (LONG CANE DIVISION) M.G. & J.J. DORN INC. TRACT (21j)"; 1934-1938; ALSO, THE "DESCRIPTION OF TRACT #21j".
 26. MAP TITLED "LONG CANE PURCHASE UNIT LAND OF J.H. BOUNKNIGHT NUMBER 324"; SURVEYED BY S.E. PUCKETTE & PARTY; DATED AUGUST, 1934; ALSO, THE "DESCRIPTION OF THE BOUNDARY OF THE J.H. BOUNKNIGHT TRACT #324".
 27. MAP TITLED "W.A. REYNOLDS ESTATE TRACT (395)" BY U.S.F.S.; DATED 03-28-1940; ALSO, THE "DESCRIPTION OF THE W.A. REYNOLDS ESTATE TRACT (395)".
 28. MAP BY J. M. BUSSEY; DATED JUNE 22, 1933; REVISED JULY 22, 1967; MCCORMICK COUNTY MB. 9 PG. 240.
 29. MAP TITLED "BOUNDARY SURVEY FOR TRACTS 1 & 3 MILDRED G. MYERS & CLAUDE J. MYERS TRACT 2 - ETHEL H. KING, ALICE H. NICHOLS & KAY FLOYD" BY TODD SURVEYS INC.; DATED NOV. 23, 1998; MCCORMICK COUNTY MB. 20 PG. 22.
 30. SOUTH CAROLINA STATE HIGHWAY DEPARTMENT PLAN AND PROFILE OF PROPOSED STATE HIGHWAY; DOCKET NO. 19.224; ROUTE NO. 283; DATED 01-17-1942.
 31. SOUTH CAROLINA STATE HIGHWAY DEPARTMENT PLAN AND PROFILE OF PROPOSED STATE HIGHWAY; FEDERAL AID PROJECT NO. 512(1) PARTS 2&3; DOCKET NO. 33.224; STATE ROUTE NO. 283; DATED 02-18-1946.
 32. MAP TITLED "MAP OF WASHINGTON S.D. NO. 25" BY J.M. BUSSEY; DATED MAY 19, 1924; MCCORMICK COUNTY MB. 2 PG. 15.
 33. MAP TITLED "MAP OF CONSOLIDATED HIGH SCHOOL DISTRICT NO. 1 OF MCCORMICK COUNTY S.D. CAR." BY J.M. BUSSEY; DATED APRIL 17, 1925; MCCORMICK COUNTY MB. 2 PG. 21.
 34. MAP TITLED "SUMTER NATIONAL FOREST (LONG CANE DISTRICT) ELLEN MORIE WIMBERLEE ET AL TRACT (238)"; 1934-1938; ALSO, THE "DESCRIPTION OF THE BOUNDARY OF THE ELLEN MORIE WIMBERLEE ET AL TRACT (238)".
 35. MAP OF 919 ACRES FOR JOHN FURY SURVEYED DECEMBER 8, 1812.
 36. MAP OF 2606 ACRES FOR JOSEPH CRAFTON SURVEYED MARCH 21, 1833.



I, R. ANDREW PLETCHER, HEREBY STATE THAT TO THE BEST OF MY PROFESSIONAL KNOWLEDGE, INFORMATION, AND BELIEF, THE SURVEY SHOWN HEREON WAS MADE IN ACCORDANCE WITH THE REQUIREMENTS OF THE STANDARDS OF PRACTICE MANUAL FOR SURVEYING IN SOUTH CAROLINA, AND MEETS OR EXCEEDS THE REQUIREMENTS FOR A CLASS A SURVEY AS SPECIFIED THEREIN.

R. Andrew Pletcher
PROFESSIONAL LAND SURVEYOR LICENSE NO. 22760



Re-Establishment of the Edgefield County and Greenwood County Boundary from Saluda County West to McCormick County and the Edgefield County and McCormick County Boundary from Greenwood County South to the Savannah River
EDGEFIELD, GREENWOOD AND MCCORMICK COUNTIES, S.C.

SURVEY FOR:
SC GEODETIC SURVEY COUNTY BOUNDARY PROGRAM
1000 ASSEMBLY ST. REMBERT DENNIS BUILDING
COLUMBIA, SC 29201

DATE: 04-30-2026
SCALE: 1" = 3000'
JOB NO.: 240602.000
ACAD FILE: SCgrd2011.dwg

COMPUTED BY: RAP
DRAWN BY: RAP
CHECKED BY: FAR

SCALE IN FEET: 0, 3000, 6000, 9000

CESI Civil - Geotechnical - Surveying
45 SPRING STREET SW CONCORD (704) 788-5424
CONCORD, NC 28025 FAX (704) 788-7464

© CESI 2026 S.C. CERTIFICATE OF AUTHORIZATION NO. C00591