

REFERENCES:

1) Descriptions in SOUTH CAROLINA CODE:

SECTION 4-3-270. Georgetown County:

"... From Leneud's Ferry (abandoned) on the Southwest bank of the Santee River; thence northeastward from said point on said line to the main road leading from Leneud's Ferry (abandoned) across Potato Ferry (abandoned) on the Black River to Britton's Ferry (abandoned) on the Great Pee Dee River, the point of origin."

SECTION 4-3-520. Williamsburg County:

"...A line commencing on the Great Pee Dee River, the dividing line between Williamsburg, Marion and Georgetown Counties, and running the road leading from Britton's and Bradley's Ferry, on said Great Pee Dee River, to Leneud's Ferry, on Santee River, the said road being the boundary line on the southeast separating it from Georgetown County...."

2) SCDOT:

- a) Plan and Profile of Proposed State Highway. Docket Number 8 2245.202, State Rt. No. 41; Berkeley-Georgetown-Williamsburg Counties, Approach to Santee River, 1948
- b) Plan and Profile of Proposed State Highway. Project No. W.P.S.S. 413, State Rt. No. 41; Georgetown-Williamsburg Counties, section between Andrews and Jamestown, 1936
- c) Plan and Profile of Proposed State Highway. State Project No. 413-b Parts 1-2-3; Georgetown-Williamsburg Counties; S.C. Rt. 41 & 41 BS, From Andrews toward Jamestown, 1938.
- d) Plan and Profile of Proposed State Highway. File No. 22.619 Project No. BNH-WCCB(001), Georgetown-Williamsburg Counties. US 521- Andrews Bypass, From SC Rt. 41 Truck Rt. to US 521 East of Andrews, 2005.
- e) Plan and Profile of Proposed State Highway. Project No. 674, Docket No's. 22.206 & 45.221. Georgetown-Williamsburg Counties. Route No. 41 & 41 BS, From Andrews Town Limit to Bridge approaches over Black River, 1938.
- f) Plan and Profile of Proposed State Highway. Project No. 2511-C(1), Docket No's. 22.215 & 45.219. Georgetown-Williamsburg Counties. Route No. 41, From Black River to Intersection with Route No. 512, 1941.
- g) Plan and Profile of Proposed State Highway. Federal Aid Project No. F 2511(3), Docket No's. 22.235 & 45.238 Part 2. Georgetown-Williamsburg Counties. Route No. 41, From Black River to Intersection with Route No. 512, 1945.
- h) As-Built Plans and Profile for State Highway. File No. 5585150, F.A. Proj. No. P027172. Georgetown-Williamsburg Counties. SC-41/ SC-51/ S-45-24 (Nesmith Rd). Intersection Improvement at SC RTE. 51 (Browns Ferry Rd) & Rd S-24 (Nesmith Rd.) 2018.

3) Georgetown Plat Book 5 271 Page 9-B

Plat prepared for Thomas D & Kim H. Rufus, 2.11 acres in Georgetown County, showing property corners found in Old County Line Road (Abandoned). Surveyed by Samuel M. Harper PLS #1003, April 2, 1998.

4) Georgetown Plat Book 3709 Page 44

Plat prepared for Mary D. Cribb, Georgetown County, showing property corners found along Old County Line Road (Abandoned). Surveyed by Steven L. Barrineau Jr. PLS # 28580, February 3, 2020.

5) Williamsburg Plat Slide 1270 Page 28

Plat prepared for William Gregory Jayroe Jr., Williamsburg County, showing property corners found along Old County Line Road (Abandoned). Surveyed by Edward A. Bodiford, PLS # 7896, May 4, 2018.

6) Williamsburg Plat Book 35 Page 23

Plat prepared for Harry L. Crooks, Williamsburg County, showing property corners set along Old County Line Road. Surveyed by Edward A. Bodiford, PLS # 7895, July 28, 1984.

7) Williamsburg Record Book 141 Page 180

Plat prepared for International Paper Company, Williamsburg County, showing road deviation from SC-41 and Old County Line Road near Boety Bay, 1953

8) USDA Aerial 11-2-1939 Big Dam Swamp

Three small deviations in the old road north east of Andrews and the Black River in the vicinity of Big Dam Swamp. CDW 5 30. United States Department of Agriculture. Courtesy South Carolina Forestry Commission.

9) USDA Aerial 11-2-1939 Deviations North of Leneud's Ferry

Aerial of the vicinity of what is now Quarry Lake, showing deviation of the old road now known as Browns Chapel Road. CDW 6 78. United States Department of Agriculture. Courtesy South Carolina Forestry Commission.

10) USDA Aerial 11-2-1939 Potatoe Ferry

West of the current road, then under construction, a bridge spans the site of Potatoe Ferry, now known as Red's Landing on the Black River. CDW 6 25. United States Department of Agriculture. Courtesy South Carolina Forestry Commission.

11) USDA Aerial 11-27-1939 Deviations Near Boety Bay

Aerial of County Line Road to north east of Guinard's Chaple showing deviation in road bend. CDW 7 16. United States Department of Agriculture. Courtesy South Carolina Forestry Commission.

12) USDA Aerial 11-27-1939 Rhems

Aerial of Liston Road (old County Line Road) and Brown's Ferry Road leading to the Rhems intersection. CDW 8 66. United States Department of Agriculture. Courtesy South Carolina Forestry Commission.

13) USDA Aerial 4-11-1938 Britton's Ferry

Aerial of the County Line Road terminus at Britton's Ferry. ASQ 2A 65. United States Department of Agriculture. Courtesy South Carolina Forestry Commission.

14) USDA Aerial 4-30-1938 Above Leneud's Ferry

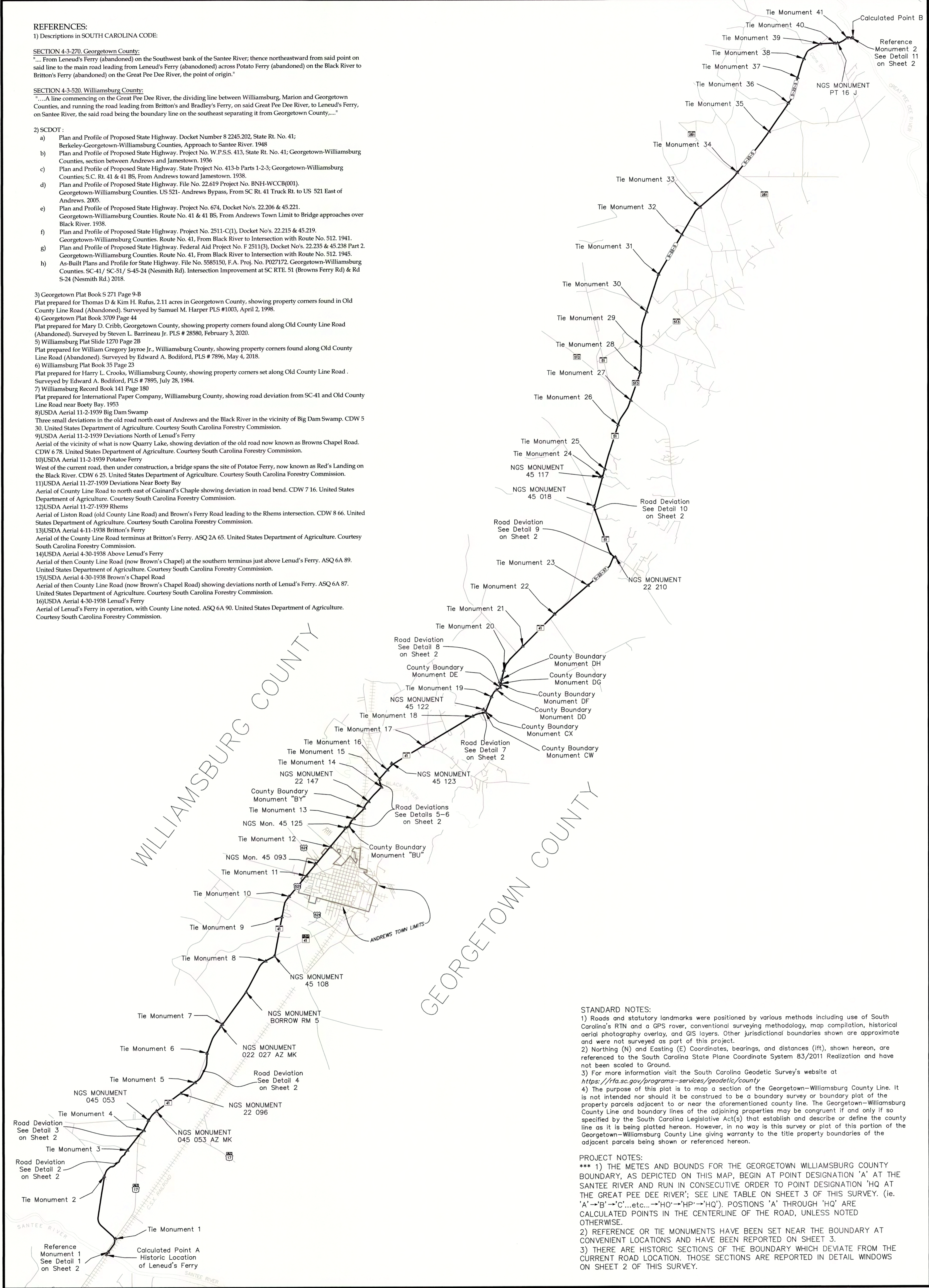
Aerial of then County Line Road (now Brown's Chapel) at the southern terminus just above Leneud's Ferry. ASQ 6A 89. United States Department of Agriculture. Courtesy South Carolina Forestry Commission.

15) USDA Aerial 4-30-1938 Brown's Chapel Road

Aerial of then County Line Road (now Brown's Chapel Road) showing deviations north of Leneud's Ferry. ASQ 6A 87. United States Department of Agriculture. Courtesy South Carolina Forestry Commission.

16) USDA Aerial 4-30-1938 Leneud's Ferry

Aerial of Leneud's Ferry in operation, with County Line noted. ASQ 6A 90. United States Department of Agriculture. Courtesy South Carolina Forestry Commission.



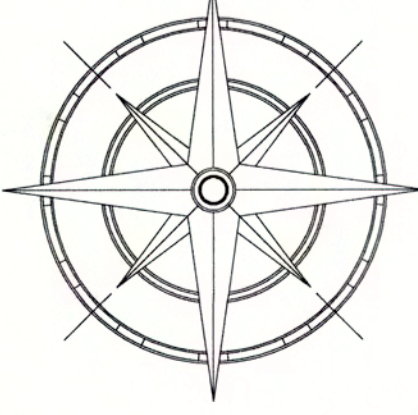
STANDARD NOTES:

- 1) Roads and statutory landmarks were positioned by various methods including use of South Carolina's RTN and a GPS rover, conventional surveying methodology, map compilation, historical aerial photography overlay, and GIS layers. Other jurisdictional boundaries shown are approximate and were not surveyed as part of this project.
- 2) Northing (N) and Easting (E) Coordinates, bearings, and distances (ft), shown hereon, are referenced to the South Carolina State Plane Coordinate System 83/2011 Realization and have not been scaled to Ground.
- 3) For more information visit the South Carolina Geodetic Survey's website at <https://rfa.sc.gov/programs-services/geodetic/county>
- 4) The purpose of this plat is to map a section of the Georgetown-Williamsburg County Line. It is not intended nor should it be construed to be a boundary survey or boundary plat of the property parcels adjacent to or near the aforementioned county line. The Georgetown-Williamsburg County Line and boundary lines of the adjoining properties may be congruent if and only if so specified by the South Carolina Legislative Act(s) that establish and describe or define the county line as it is being platted hereon. However, in no way is this survey or plat of this portion of the Georgetown-Williamsburg County Line giving warranty to the title property boundaries of the adjacent parcels being shown or referenced hereon.

PROJECT NOTES:

- *** 1) THE METES AND BOUNDS FOR THE GEORGETOWN WILLIAMSBURG COUNTY BOUNDARY, AS DEPICTED ON THIS MAP, BEGIN AT POINT DESIGNATION 'A' AT THE SANTEE RIVER AND RUN IN CONSECUTIVE ORDER TO POINT DESIGNATION 'HQ' AT THE GREAT PEE DEE RIVER; SEE LINE TABLE ON SHEET 3 OF THIS SURVEY. (i.e. 'A' → 'B' → 'C'...etc... → 'HO' → 'HP' → 'HQ'). POSITIONS 'A' THROUGH 'HQ' ARE CALCULATED POINTS IN THE CENTERLINE OF THE ROAD, UNLESS NOTED OTHERWISE.
- 2) REFERENCE OR TIE MONUMENTS HAVE BEEN SET NEAR THE BOUNDARY AT CONVENIENT LOCATIONS AND HAVE BEEN REPORTED ON SHEET 3.
- 3) THERE ARE HISTORIC SECTIONS OF THE BOUNDARY WHICH DEVIATE FROM THE CURRENT ROAD LOCATION. THOSE SECTIONS ARE REPORTED IN DETAIL WINDOWS ON SHEET 2 OF THIS SURVEY.

N
S.C. Grid 83/2011



LEGEND	
(f)	Found
(c)	Calculated
(s)	Set
▲	Monument
○	Calculated Point

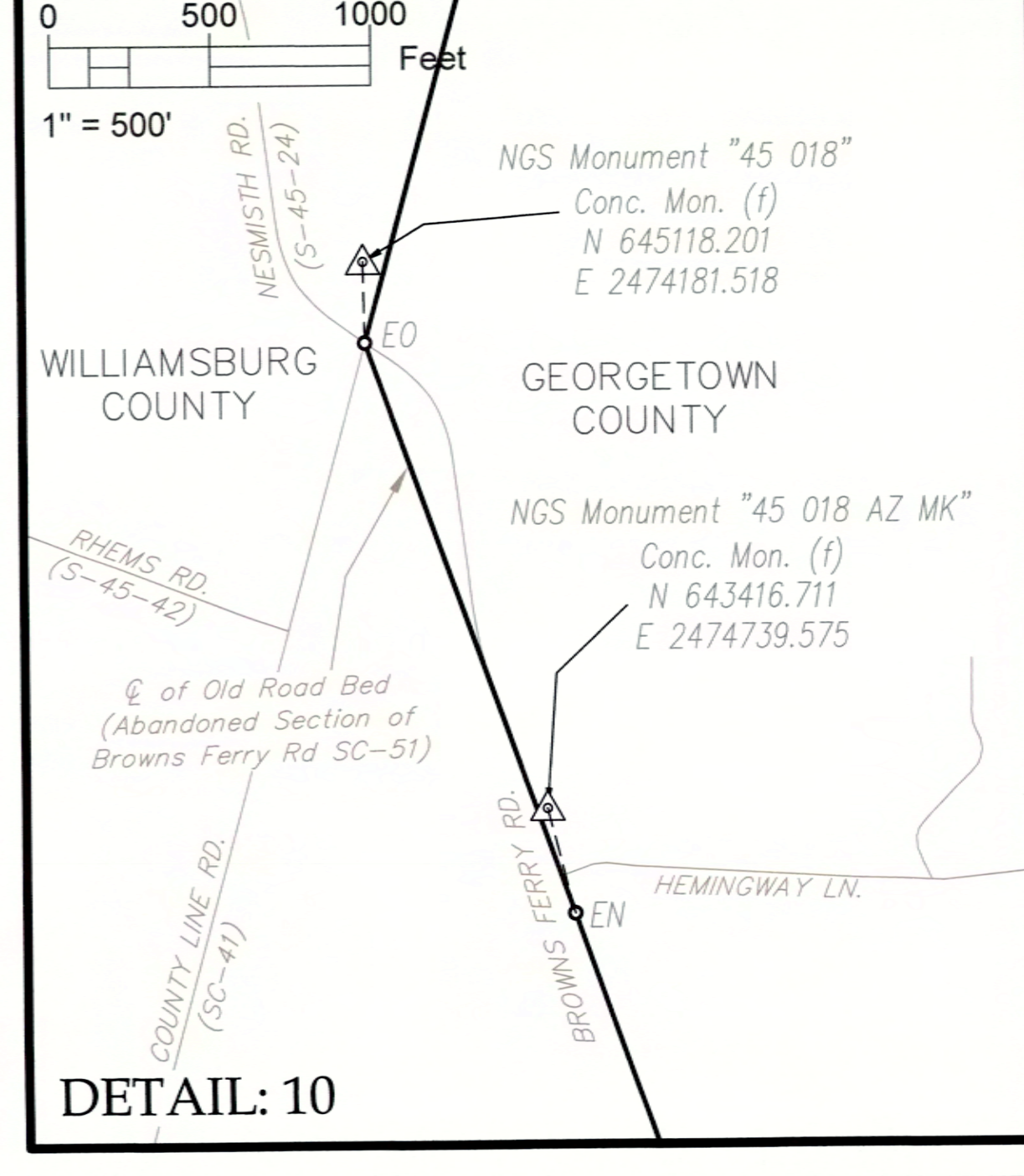
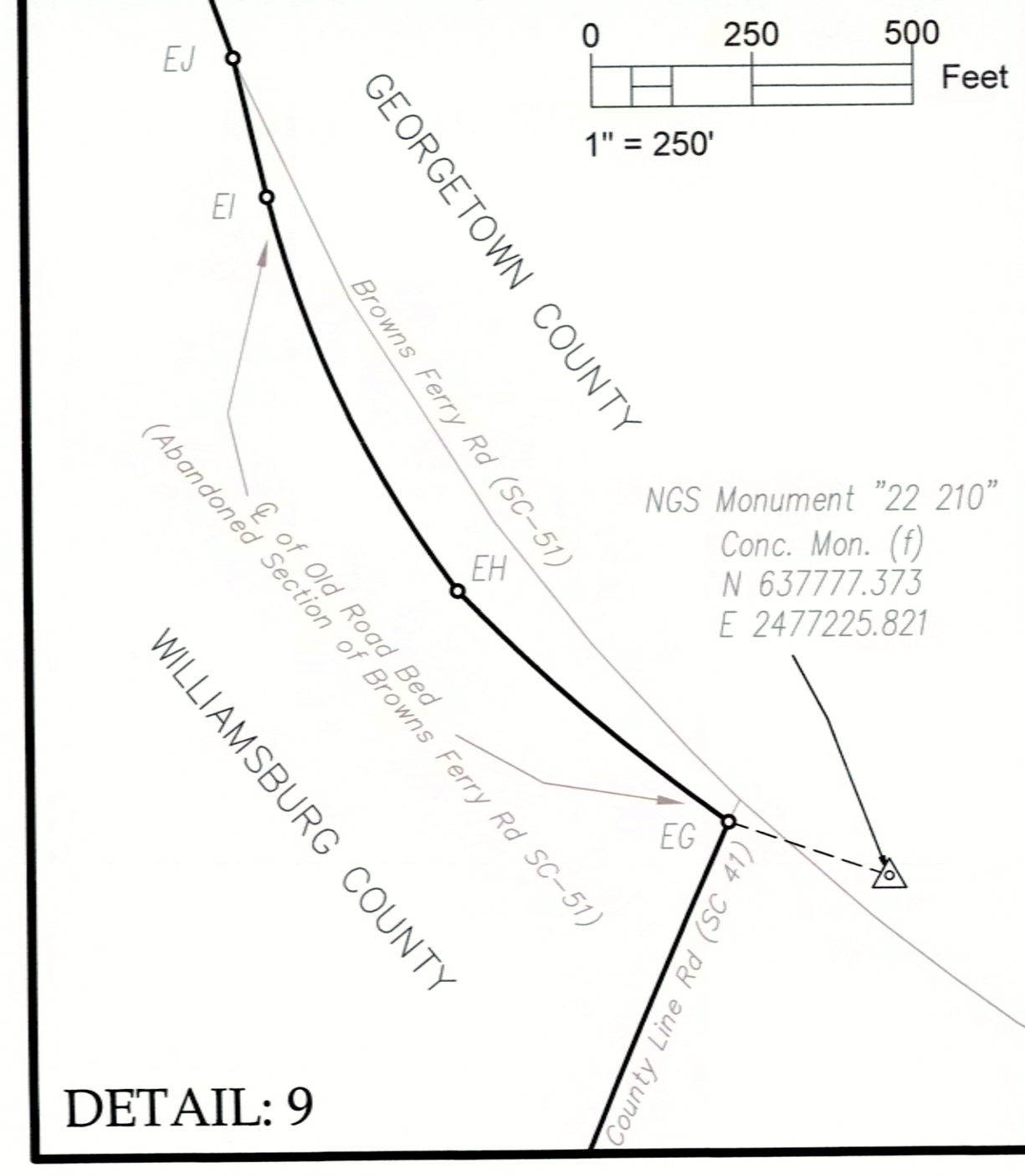
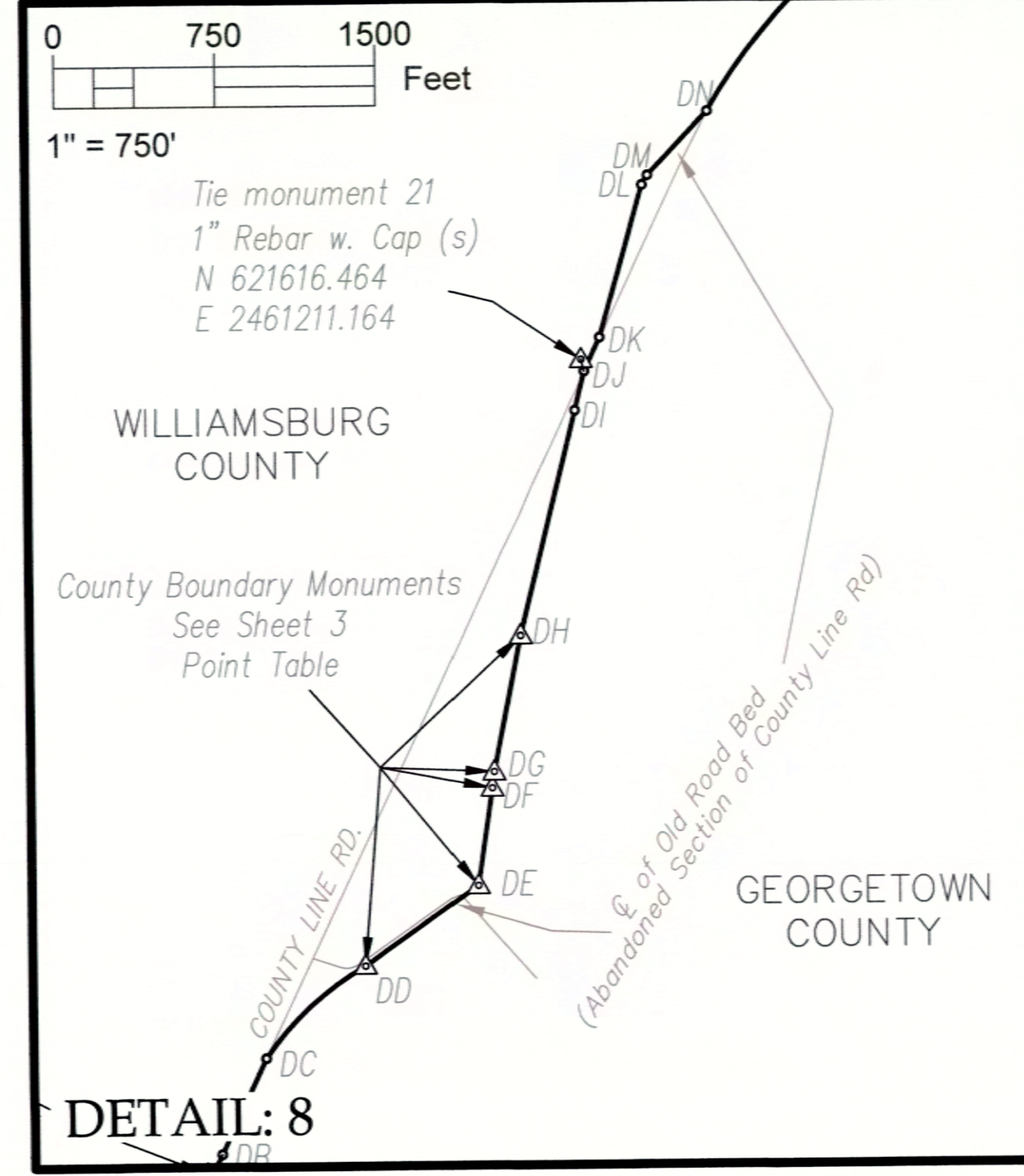
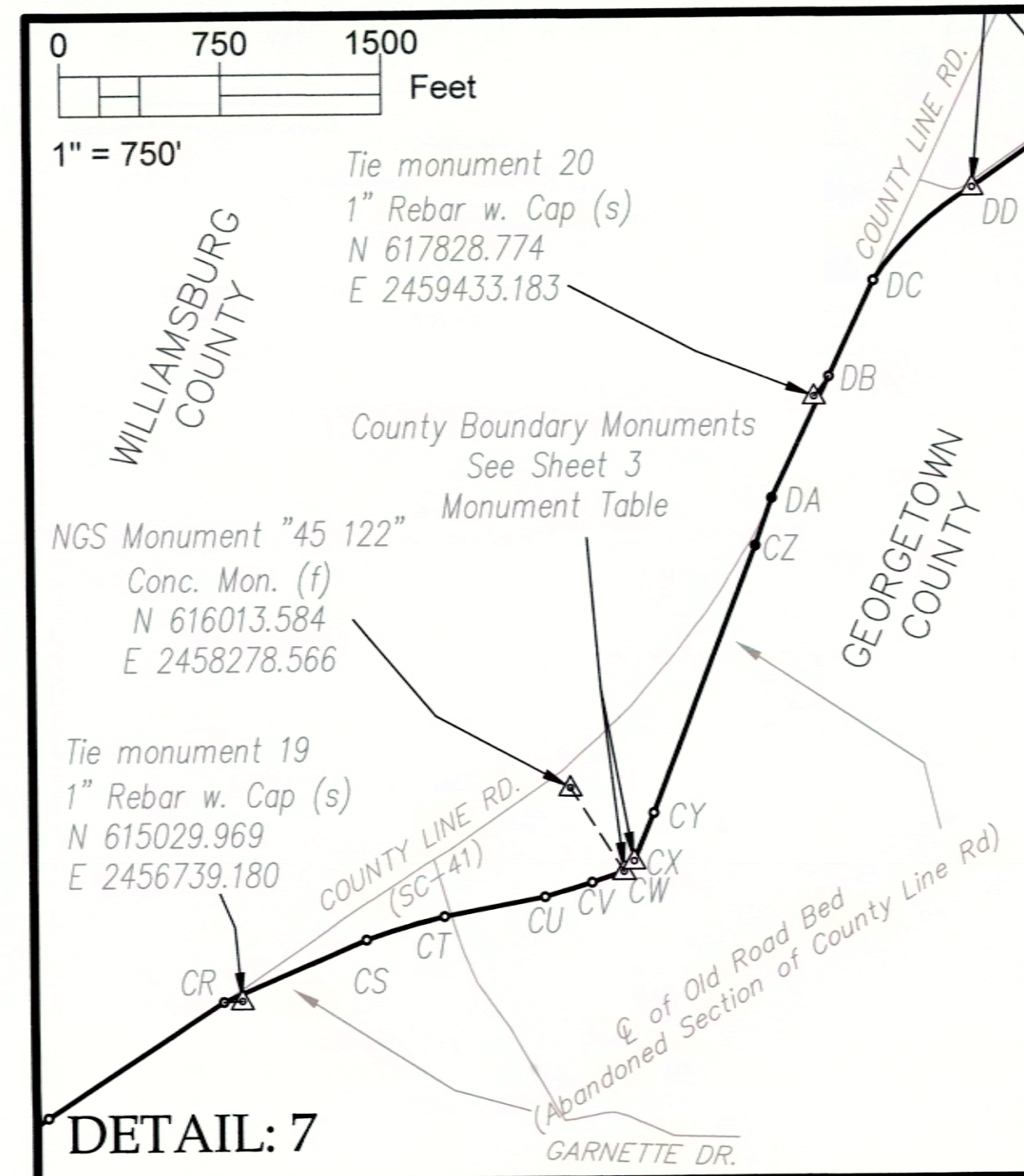
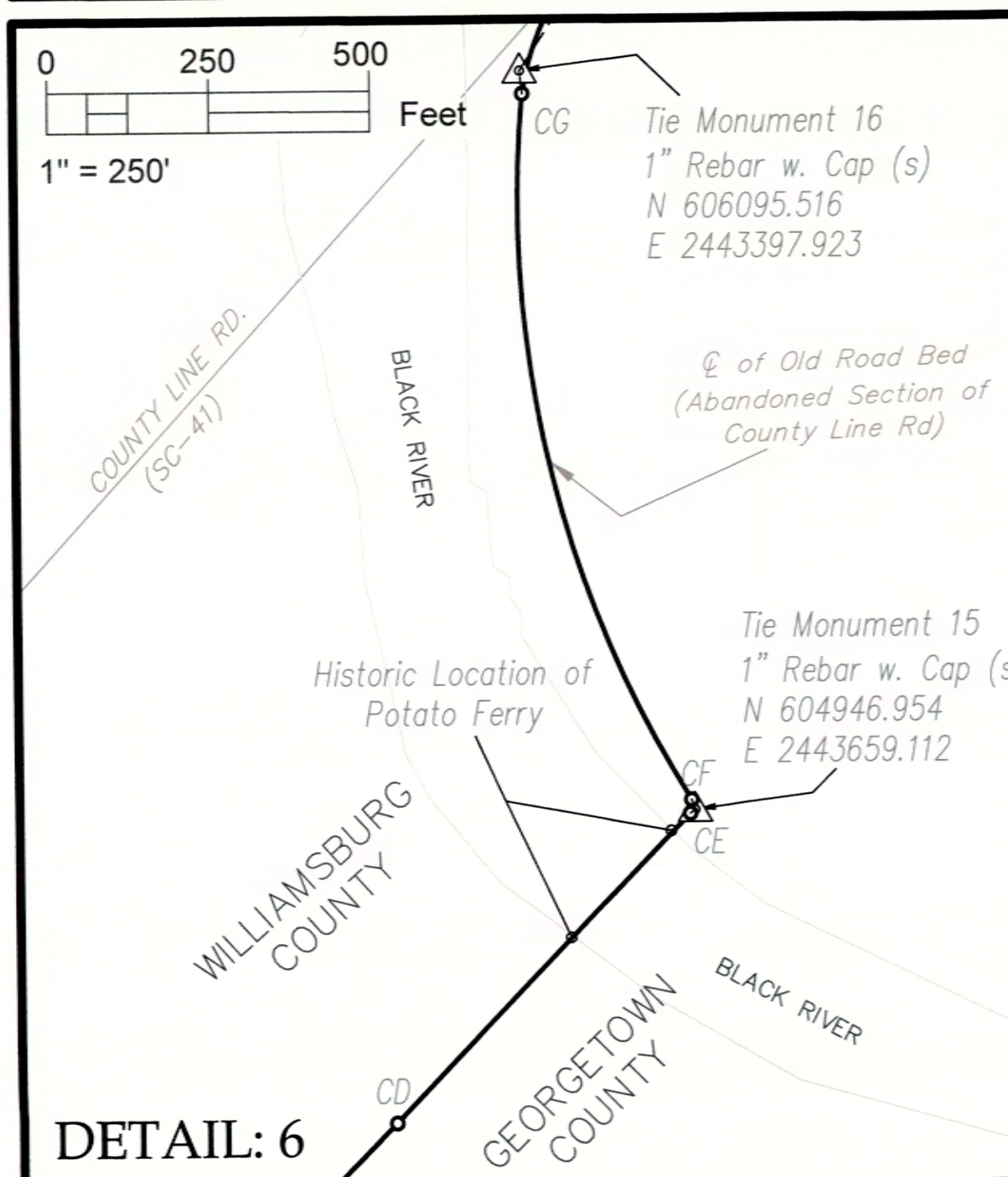
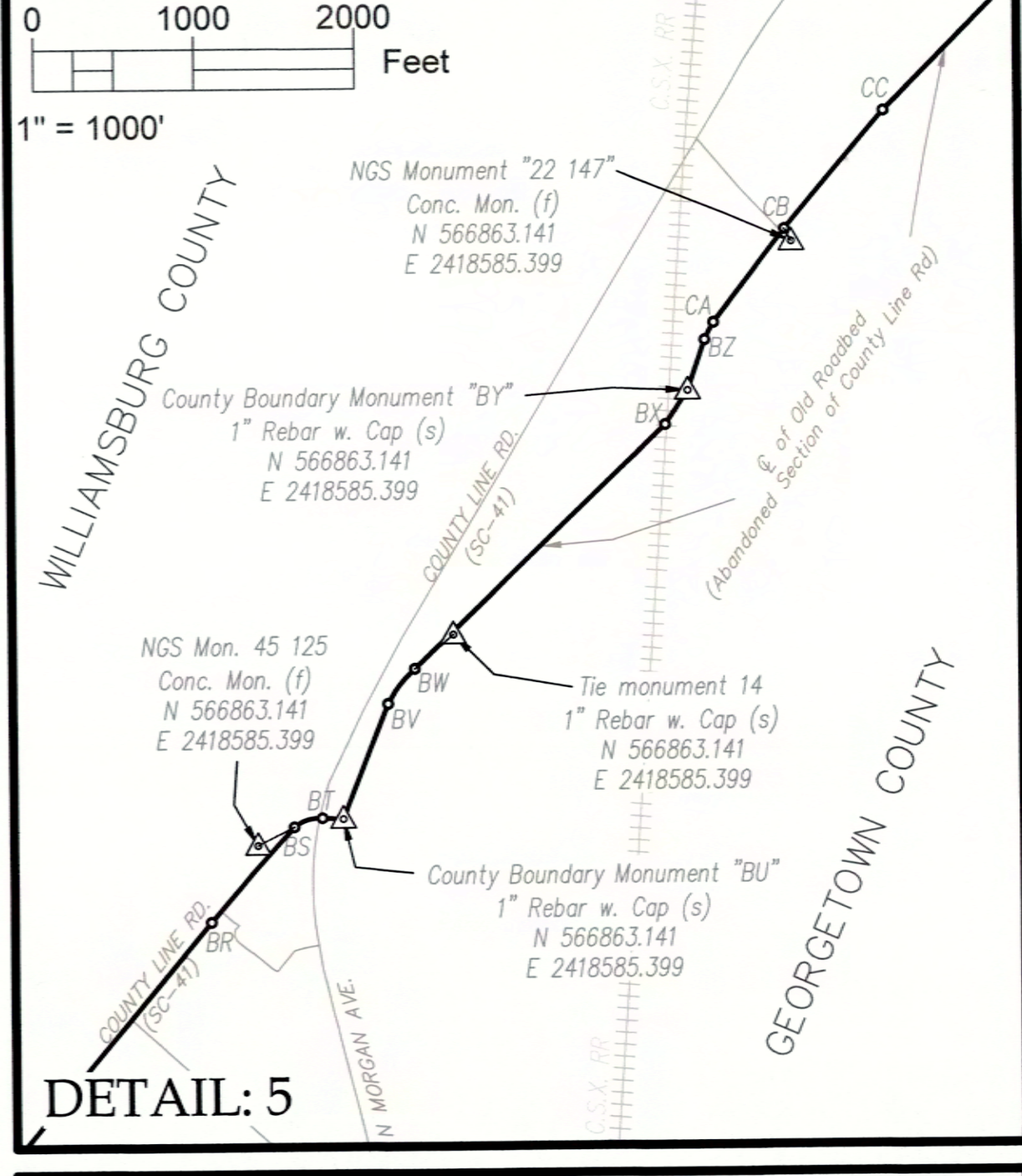
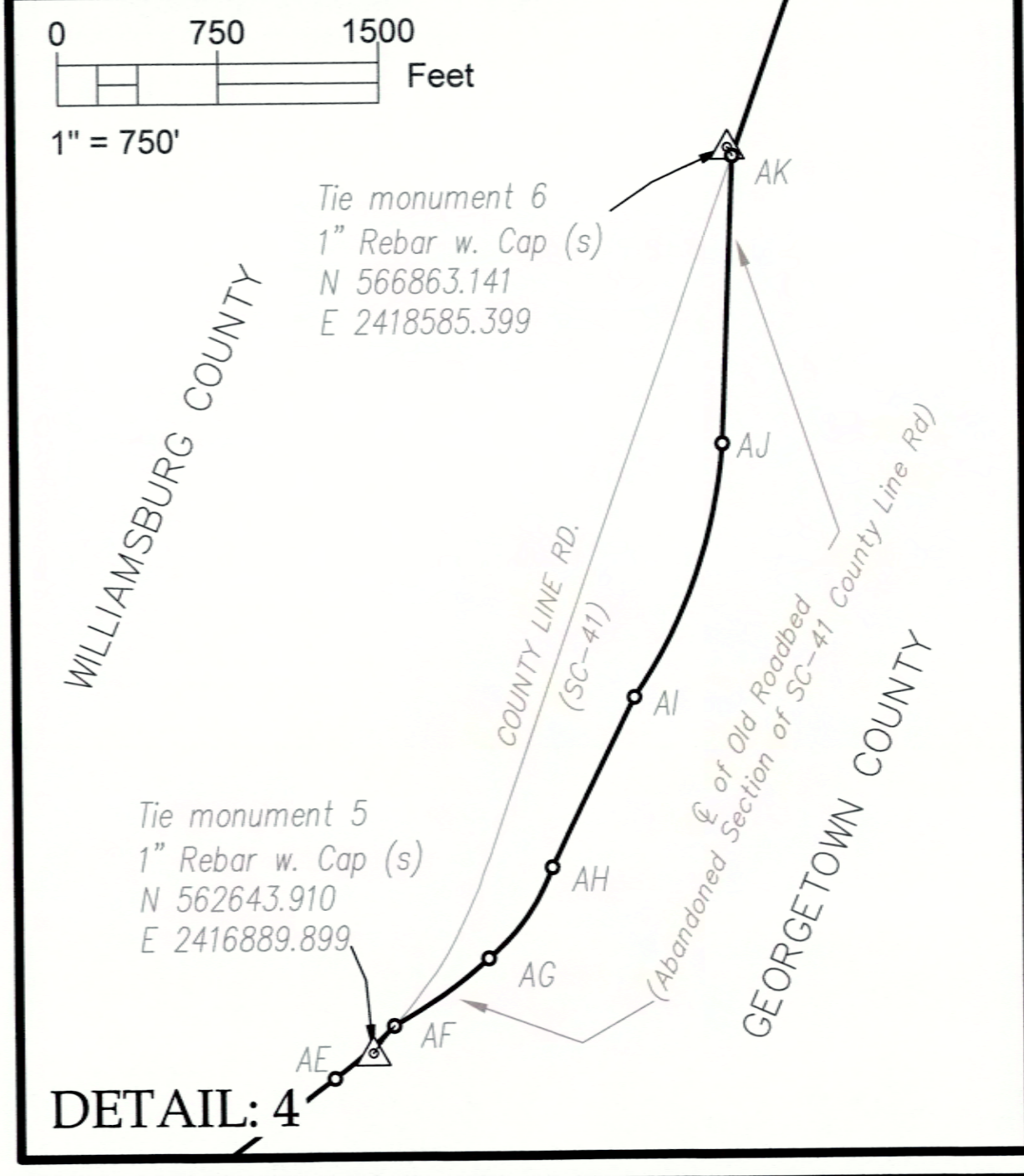
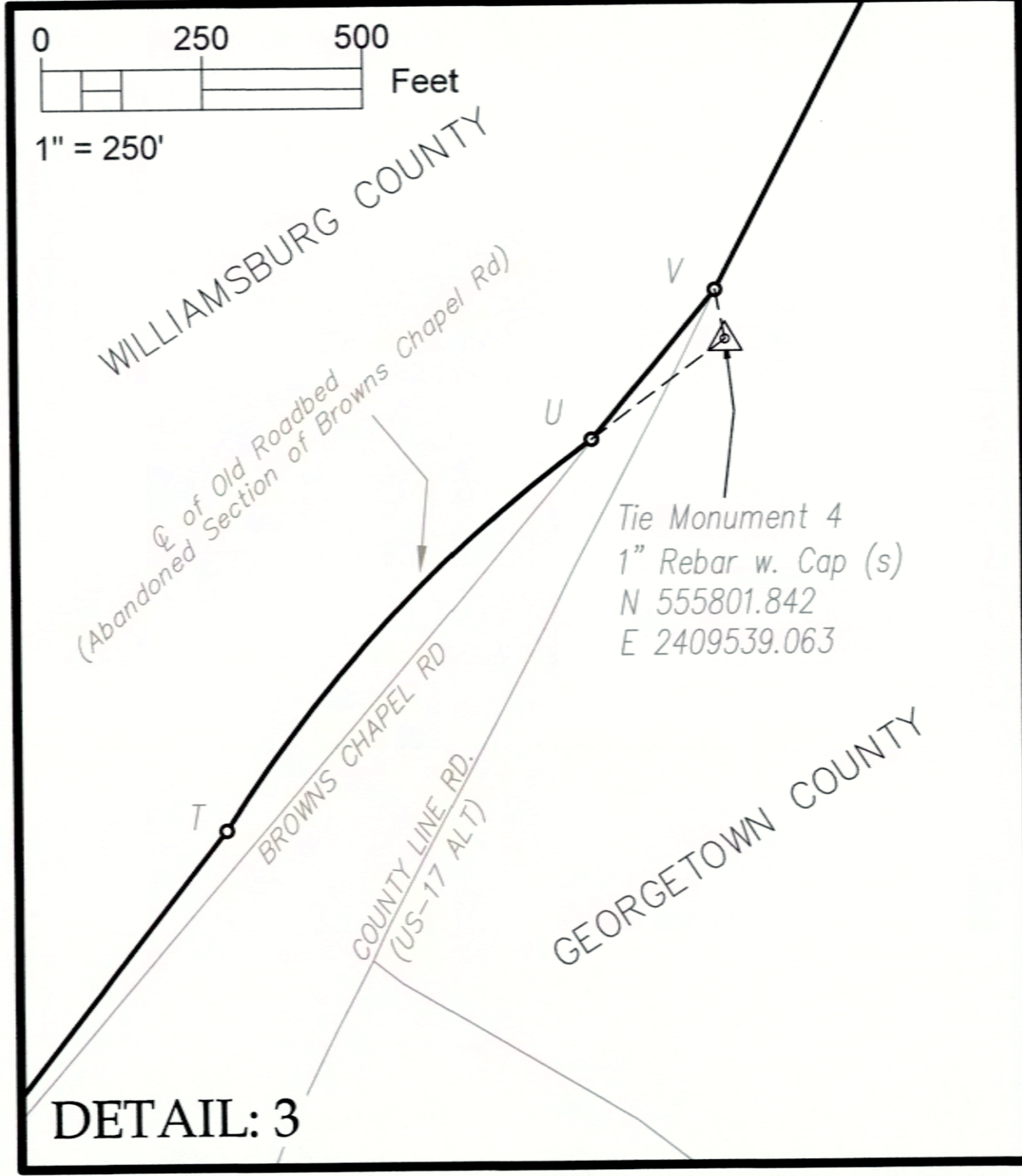
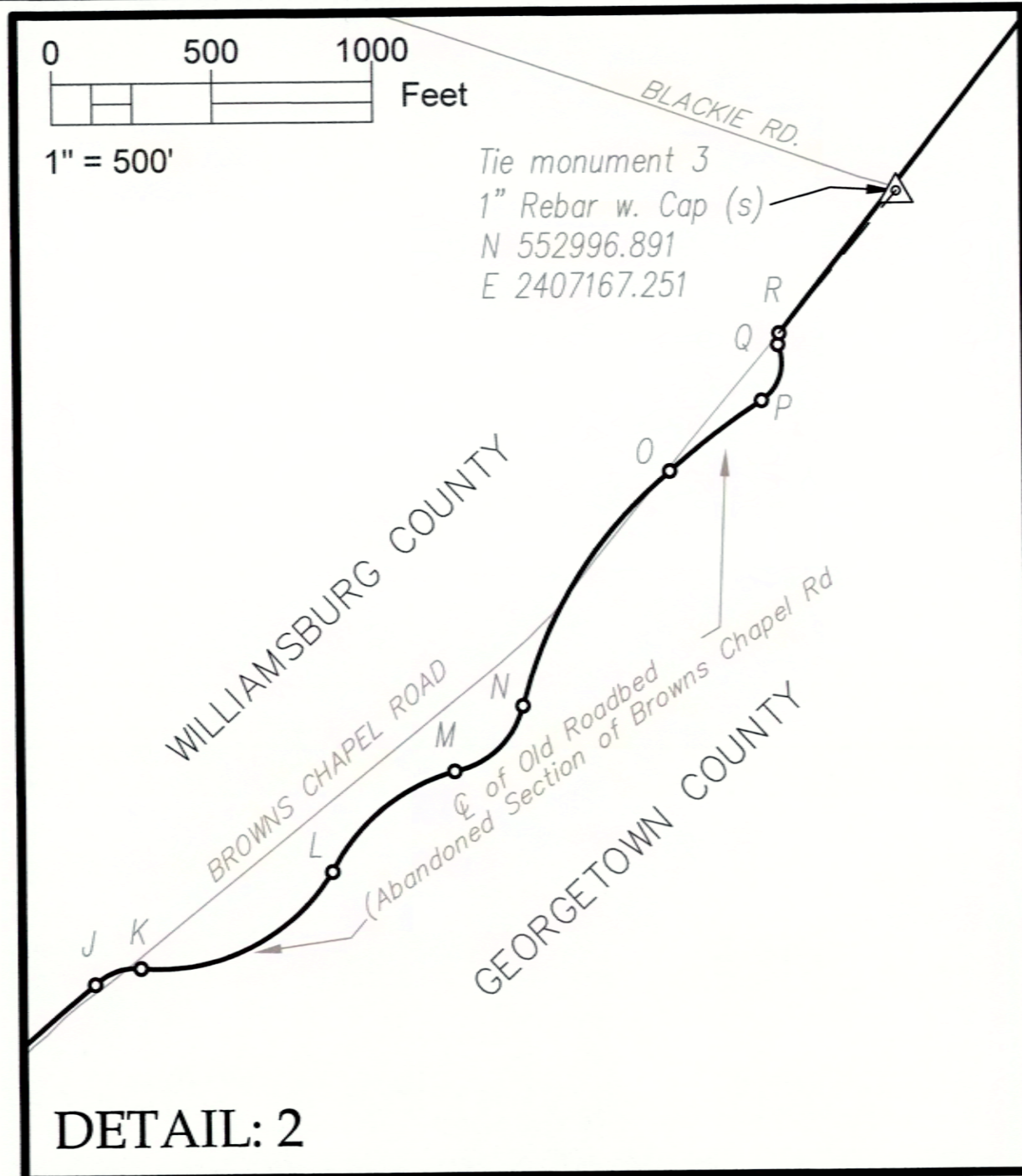
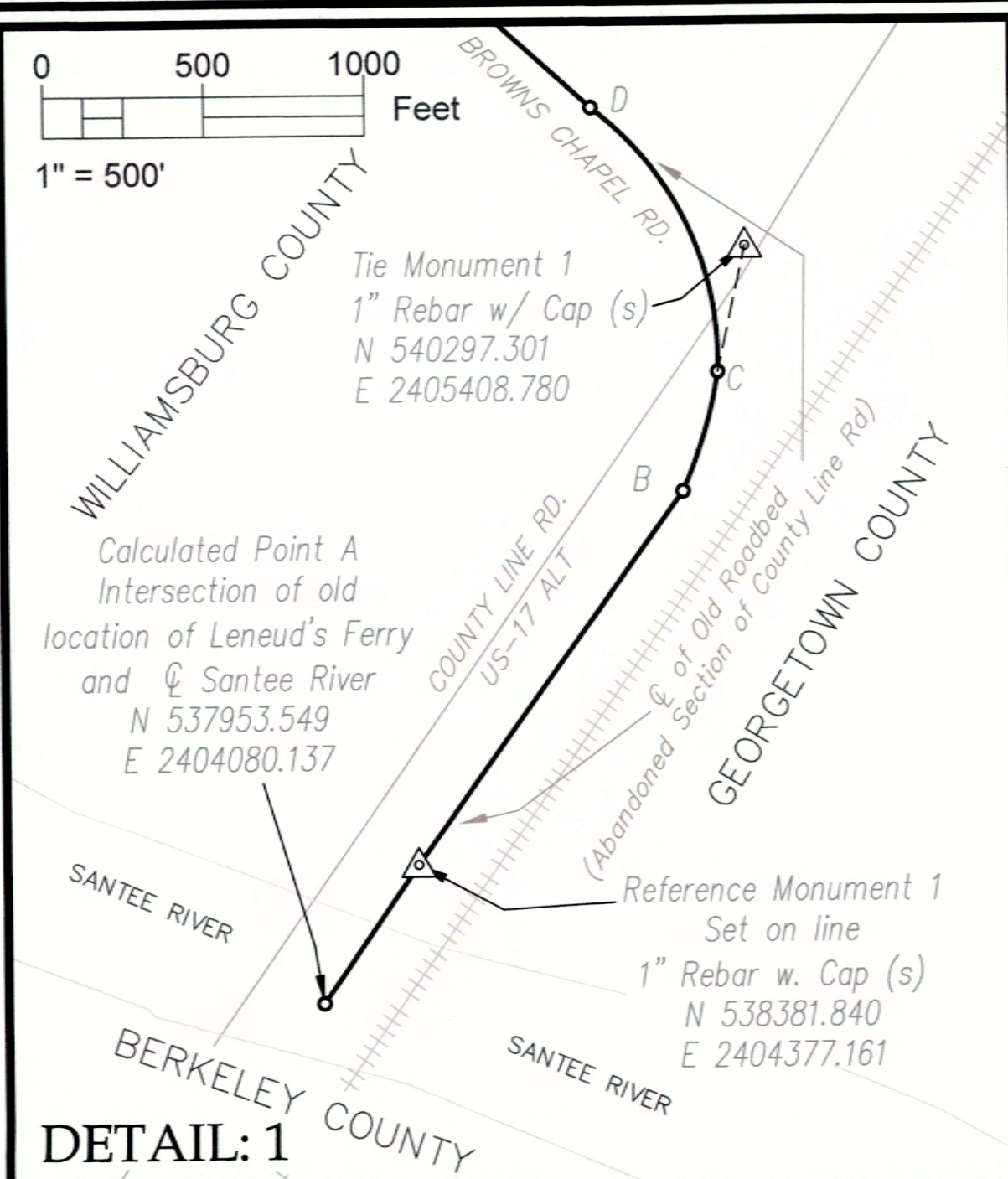
**RE-ESTABLISHMENT OF THE COMMON BOUNDARY OF
GEORGETOWN AND WILLIAMSBURG COUNTIES**

FIELD WORK AND MAP BY
SOUTH CAROLINA GEODETIC SURVEY
1000 ASSEMBLY ST; 4TH FLOOR
COLUMBIA, SC 29201
803.734.3793
<http://rfa.sc.gov/geodetic>



Date: November 20, 2024
*Date Reflects Final Day of Field Work

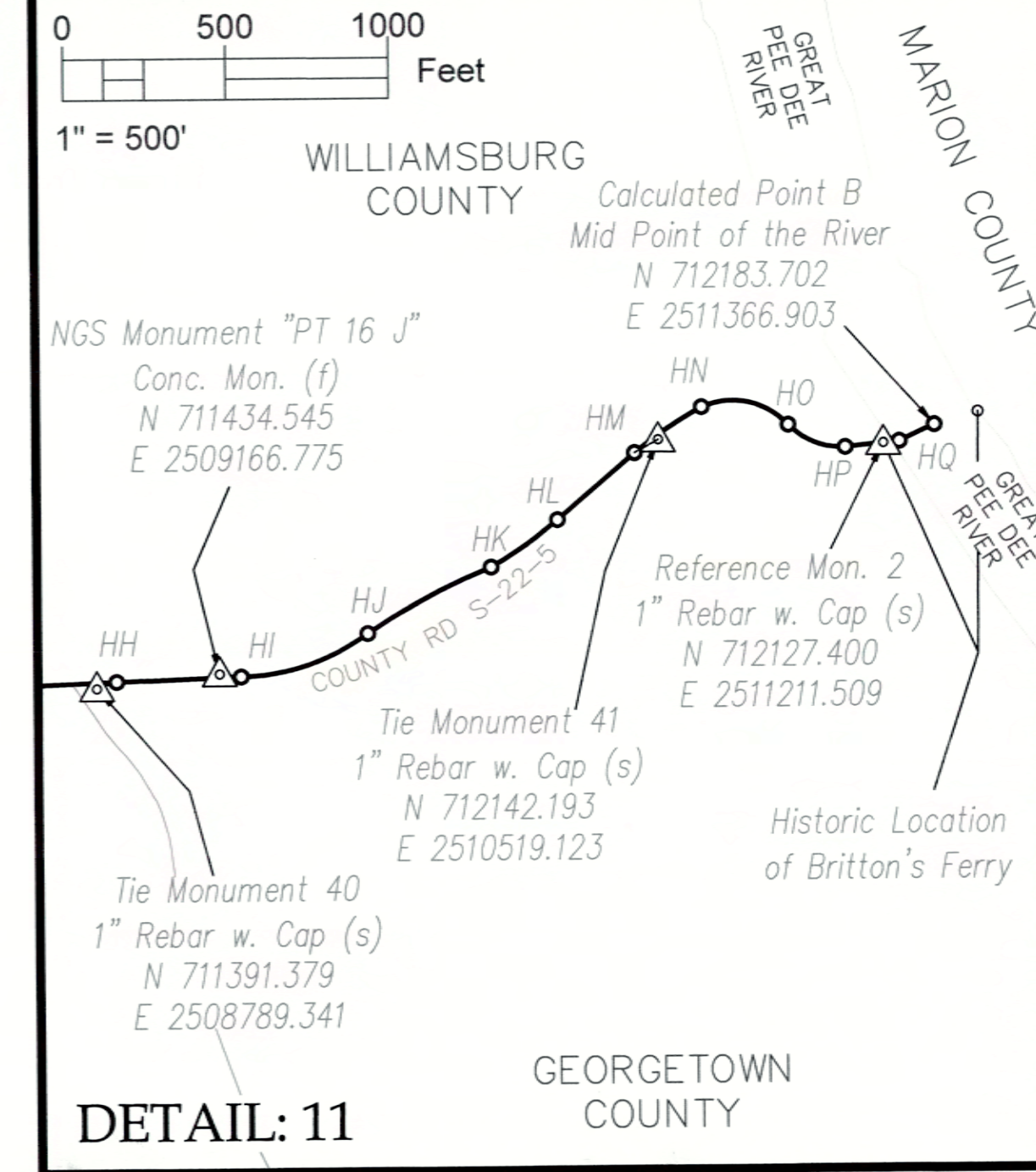
I hereby state that to the best of my professional knowledge, information, and belief, the survey shown hereon was made in accordance with the requirements of the Standards of Practice Manual for Surveying in South Carolina, and meets or exceeds the requirements for a Class B survey as specified therein.



LEGEND

(f)	Found
(c)	Calculated
(s)	Set
△	Monument
○	Calculated Point
—	County Boundary
---	Tie Line

DETAILS SHOWING ABANDONED ROADBED SECTIONS DEVIATING FROM CURRENT ROAD
SEE SHEET 3 FOR ROAD LINE AND CURVE DATA-TIE LINE DATA- POINT DATA



**RE-ESTABLISHMENT OF THE COMMON BOUNDARY OF
GEORGETOWN AND WILLIAMSBURG COUNTIES**

FIELD WORK AND MAP BY
SOUTH CAROLINA GEODETIC SURVEY
1000 ASSEMBLY ST; 4TH FLOOR
COLUMBIA, SC 29201
803.734.3793
<http://rfa.sc.gov/geodetic>

I hereby state that to the best of my professional knowledge, information, and belief, the survey shown hereon was made in accordance with the requirements of the Standards of Practice Manual for Surveying in South Carolina, and meets or exceeds the requirements for a Class B survey as specified therein.

Jacob Jordan
Date: November 20, 2024
*Date Reflects Final Day of Field Work

