

# Edgefield-Greenwood-McCormick County Line From the Little Mountain Creek to the Savannah River

Meeting Will  
Start at 6pm



# County Boundary Re-establishment Program

- Over the last 30+ years, the South Carolina Geodetic Survey has worked with South Carolina counties to help resolve ambiguities between county boundaries

## SC Code of Law SECTION 27-2-105

- Act No. 262 of 2014: “so as to authorize and direct the SCGS to clarify county boundaries...”

## WHY

- Passage of time and growth has led to confusion over statutory county descriptions and the locations of county boundary lines
- Exact and precise locations and boundaries of the State’s political subdivisions are critical for services, enforcement of property rights and election of public officials.
- Necessary for state government and political subdivisions
- Technology exists now to cost-effectively provide definite and permanent markers of boundary lines



# Steps for Clarifying Boundaries

## SC Code of Law SECTION 27-2-105 (A)(1)

- Requirements of SCGS:

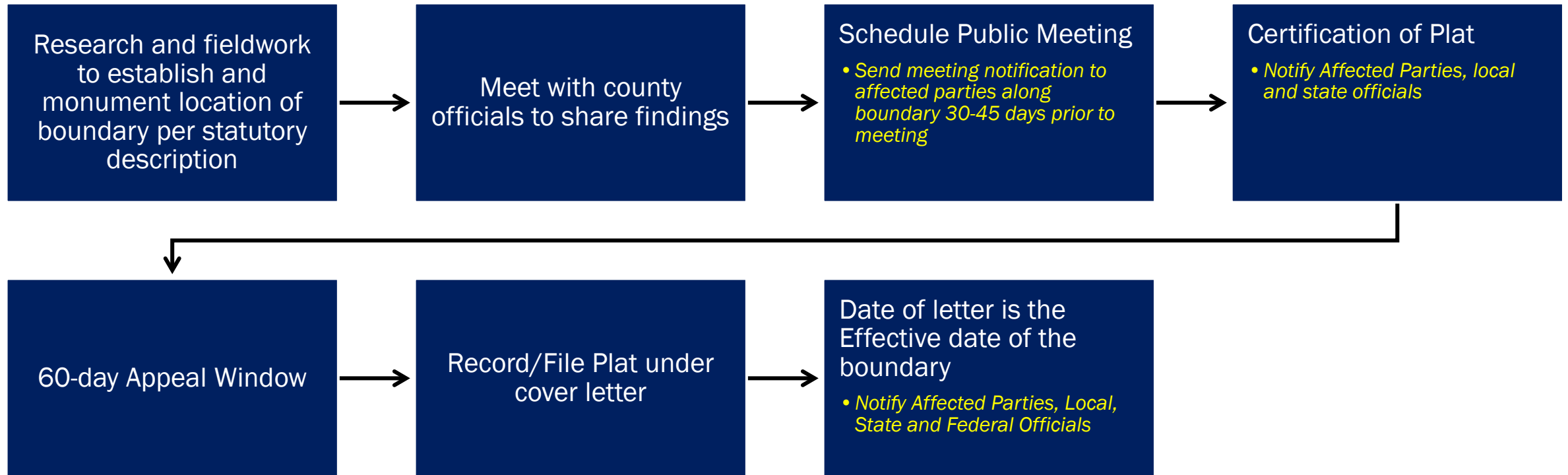
- Where county boundaries are ill-defined, unmarked, or poorly marked, the South Carolina Geodetic Survey on a cooperative basis shall assist counties in defining and monumenting the locations of county boundaries and positioning the monuments using geodetic surveys. The South Carolina Geodetic Survey (SCGS) shall seek to clarify the county boundaries as defined in Chapter 3, Title 4. The SCGS shall analyze archival and other evidence and perform field surveys geographically to position all county boundaries in accordance with statutory descriptions. Physical and descriptive points defining boundaries must be referenced using South Carolina State Plane Coordinates.

- Requirements of SCGS:

- Upon reestablishing county boundary, SCGS shall certify its work and within 30 days of certification:
- Provide copies to the administrator of each affected county; Provide written notification to affected parties
- Provide notice and copies to the public through its official website and or other means it considers appropriate; and
- Notify as it determines appropriate, other affected state and federal agencies
- (Initiates 60 Day Appeal Process)
- Certified Surveys submitted to Secretary of State, Register of Deeds Offices, and South Carolina Department of Archives with Cover Letter
- Date of the cover letter is the date the surveys become effective
- Introduce Legislation to update Code of Law to reflect clarified boundary with State Plane Coordinates



# SCGS County Boundary Clarification Process



# SC Code of Law SECTION 27-2-105 (B) (1)

- **Affected Parties Disagreeing with SCGS:**
  - May file request for a contested case hearing with the SC Administrative Law Court
  - This decision may be appealed
  - **“Affected Party”**
    - Governing body of an affected county
    - Governing body of a political subdivision of this State
    - An elected official, other than a statewide elected official
    - A property owner or an individual residing in the certification zone
    - A business entity located in the certification zone
    - A nonresident individual who owns or leases real property situated in the certification zone



# Code of law

## SECTION 4-3-240. Edgefield County

Edgefield County is bounded as follows: on the north and northeast by Greenwood and Saluda Counties; on the southeast by Aiken County; on the south and southwest by the Savannah River, which separates it from Georgia and McCormick County, which latter county is separated from Edgefield County by a line beginning on the Greenwood-Edgefield County line more particularly described in the boundaries of McCormick County, and running in a westerly direction to a stake about 1/4 of a mile west of the old White place; thence in a straight line S. 13° E. 10,978 feet to a stake; thence S. 77° W. 3,750 feet to a stake; thence S. 13° E. 8,522 feet to a pine; thence S. 35° 45' E. 20,400 feet to Cochran's Bridge, on Turkey Creek; thence S. 26° 30' E. 1,680 feet to a point where a branch crosses a public road; thence S. 59° 30' W. 27,908 feet to the run of Big Stevens' Creek; thence down the run of Big Stevens' Creek to a stake; thence S. 50° W. 22,828 feet to the South Carolina-Georgia line in the Savannah River, and in addition the following territory transferred from McCormick County by act of the General Assembly, approved February 9 1921, to wit: beginning on the McCormick and Edgefield County line at Moultrie's Mill Branch on Turkey Creek; thence down the run of Turkey Creek to its intersection with Stephen's Creek; thence down the run of Stephen's Creek to the Edgefield and McCormick County line; thence to Edgefield and McCormick County line N. 59° 45' E. 27,908 feet to a corner at the intersection of a public road with a branch of Beaver Creek; thence with the Edgefield and McCormick County line N. 26° 15' W. 16,800 feet to the beginning, less the following territory transferred to McCormick County by act of the General Assembly, approved February 11 1921, to wit: all of that certain territory or portion of Edgefield County embraced within the following lines and boundaries, to wit: beginning at a cottonwood tree on the west bank of Stephen's Creek; thence to Edgefield and McCormick County line and the South Carolina and Georgia State line of the Savannah River; thence the South Carolina and Georgia State line on the Savannah River to old Furry's Ferry; thence a straight line N. 24° E. to a stake X 3 N. on the west bank of Stephen's Creek to the beginning point.



# Code of law

## SECTION 4-3-290. Greenwood County.

to its northwest corner on Mountain Creek; thence a straight line to the middle line of Shinburg Bridge on Cuffa Town Creek;



# Code of law

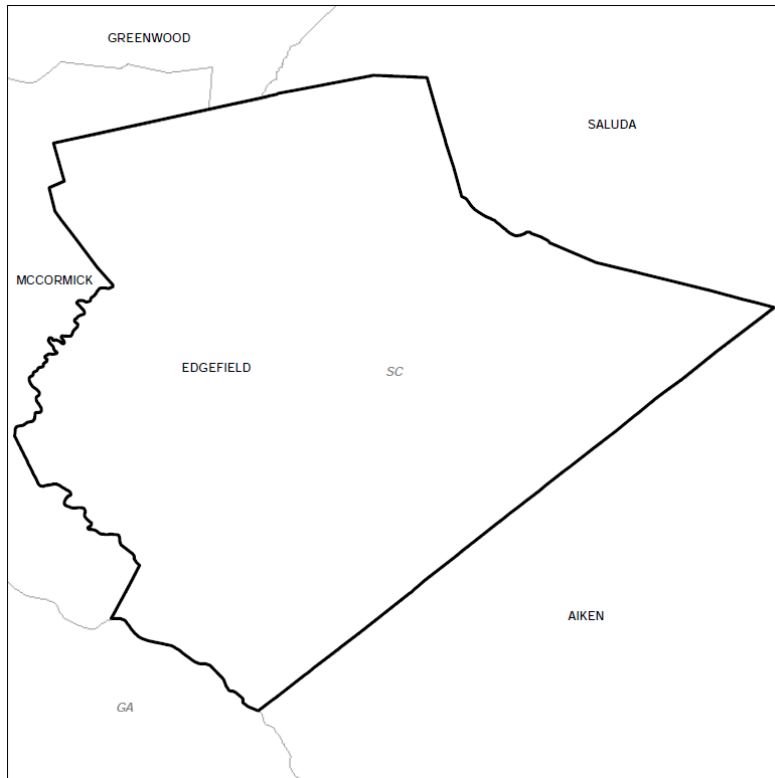
## SECTION 4-3-400. McCormick County

; thence the said Greenwood-Edgefield County line in a westerly direction to a stake about one quarter of a mile west of the old White place; thence a straight line S. 13° E. 10978 feet to a stake; thence a straight line S. 77° W. 3750 feet to a stake; thence a straight line S. 13° E. 8522 feet to a pine; thence a straight line S. 35° 45' 20400 feet to Cochran Bridge on Turkey Creek; thence a straight line S. 26° 30' E. 16800 feet to a point where a branch crosses a public road; thence a straight line S. 59° 10' W. 27908 feet to the run of Big Stevens Creek; thence down the run of Big Stevens Creek to a stake; thence a straight line S. 50° W. 22828 feet to the South Carolina-Georgia State line in the Savannah River; thence the said South Carolina-Georgia State line in a northwesterly direction to the beginning point. The said county is hereby named McCormick, and the county seat thereof is hereby established in the town of McCormick, and in addition the following territory transferred from Edgefield County by act of the General Assembly, approved February 11 1921, to wit: beginning at a cottonwood tree on the west bank of Stevens Creek; thence the Edgefield and McCormick County line to the South Carolina and Georgia State line in the Savannah River; thence the South Carolina and Georgia State line in the Savannah River to old Furry's Ferry; thence a straight line north twenty-four degrees east to a stake X3N on the west bank of Stevens Creek; thence up the west bank of Stevens Creek to the beginning point, and less the following territory transferred to Edgefield County by act of the General Assembly, approved February 9 1921, to wit: beginning on the McCormick and Edgefield County line at Moultrie's Mill Bridge on Turkey Creek; thence down the run of Turkey Creek to its intersection with Stevens Creek; thence down the run of Stevens Creek to the Edgefield and McCormick County line; thence the Edgefield and McCormick County line N. 59° 45' E. 27908 feet to a corner at the intersection of a public road with a branch of Beaver Creek; thence the Edgefield and McCormick County line N. 26° 15' W. 16800 feet to the beginning point.



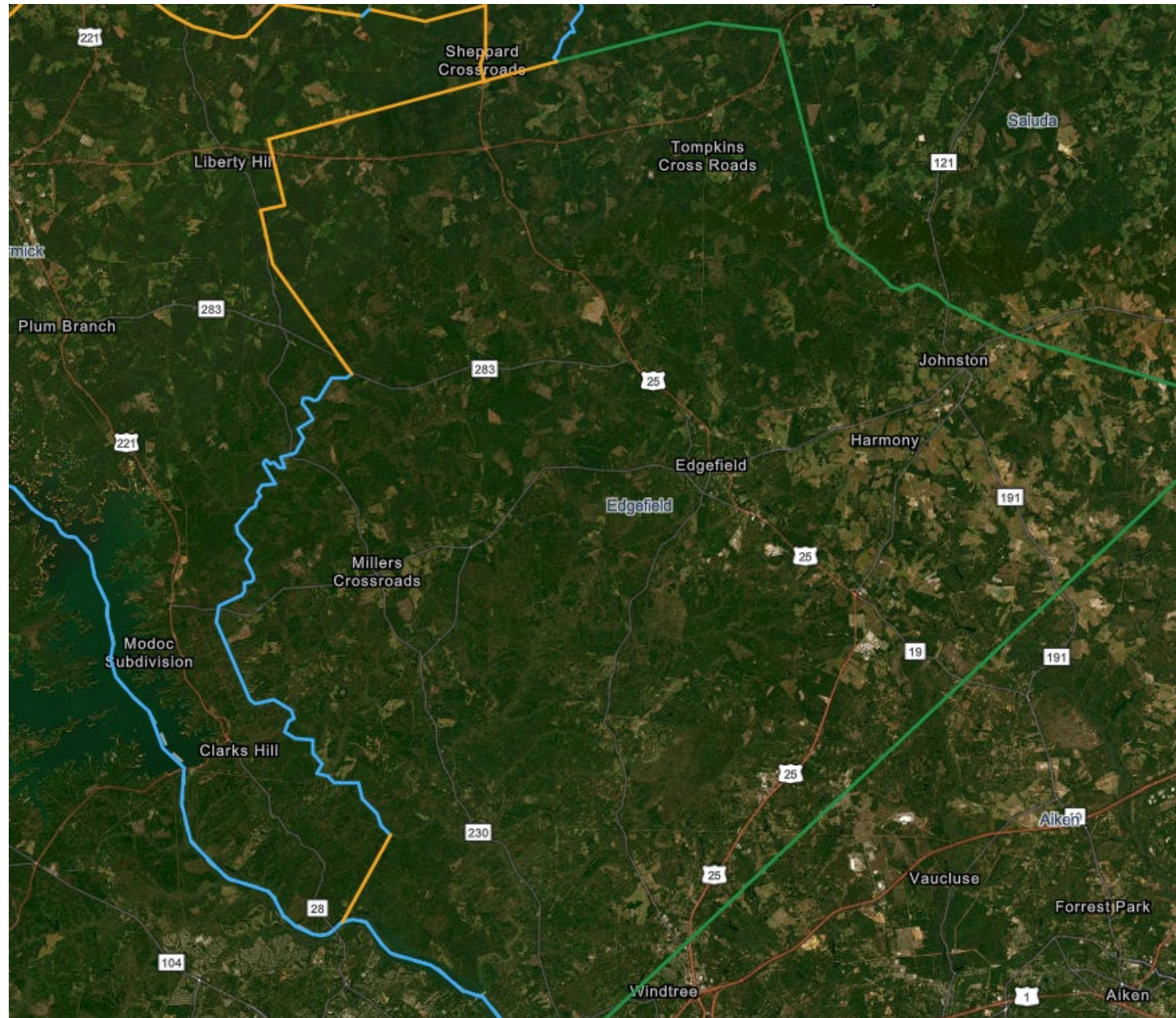
# Edgefield-Greenwood-McCormick County Line

## History



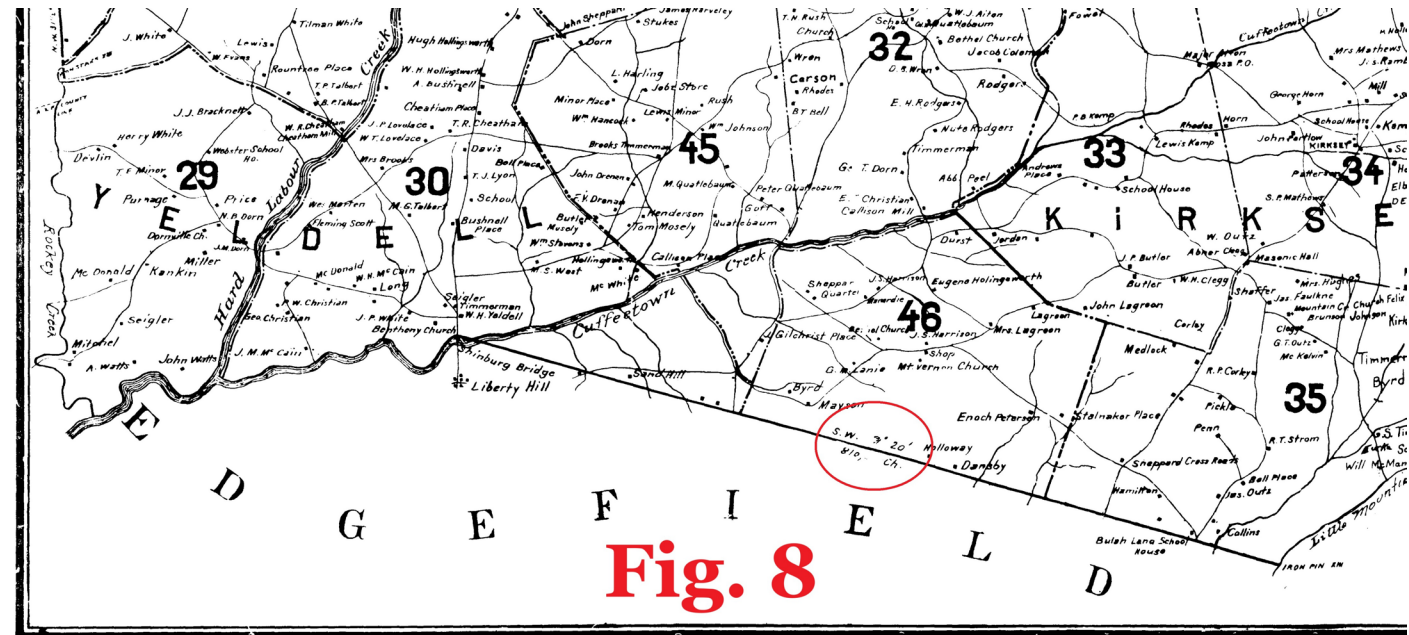
- Edgefield County created 1785
- Edgefield lost to creation of Aiken County 1871
- Edgefield lost to the creation of Saluda County 1896
- Edgefield lost to the creation of Greenwood County 1897
- Edgefield lost to Greenwood County Annexation 1898
- Edgefield lost to the creation of McCormick County 1916
- Edgefield gained from McCormick County Annexation 1921
- Edgefield lost to McCormick County Annexation 1921





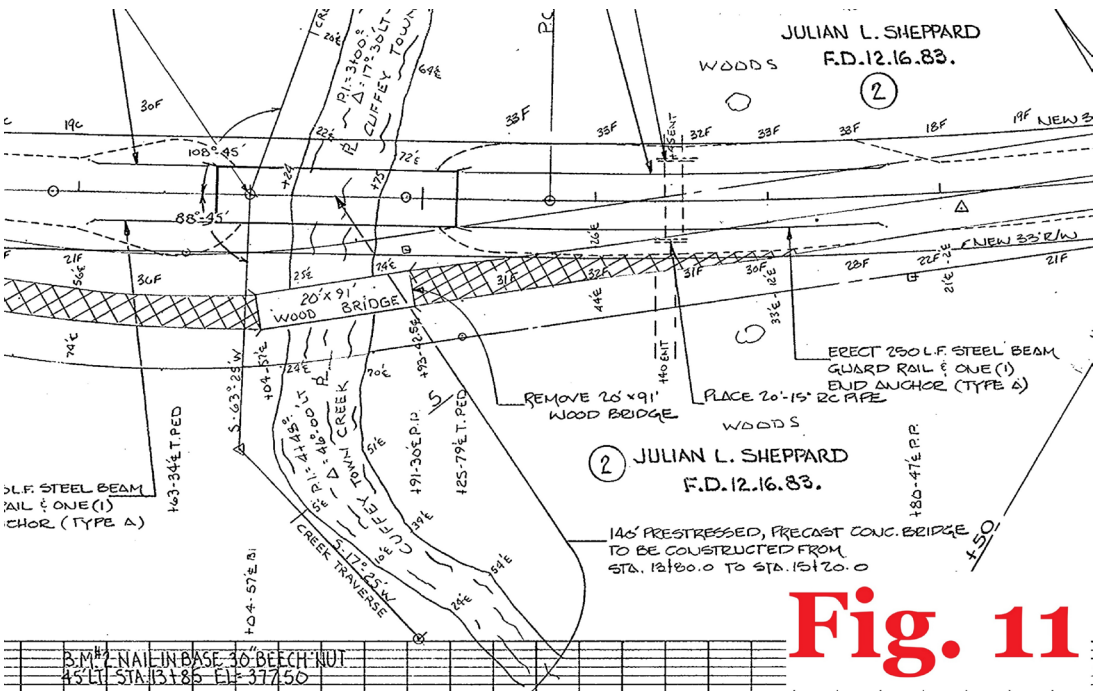
# Edgefield-Greenwood County Line

- The Edgefield-Greenwood line originally extended 810 chains (53,460 feet) from Little Mountain Creek to Shinburg Bridge
- The distance from the remnants of the bridge to the reestablished Saluda corner is 53,538.11 feet – a difference of less than 80 feet



# Edgefield-Greenwood County Line

- The bridge is gone, but the abutments are still in place and confirmed by SCDOT plans from 1983

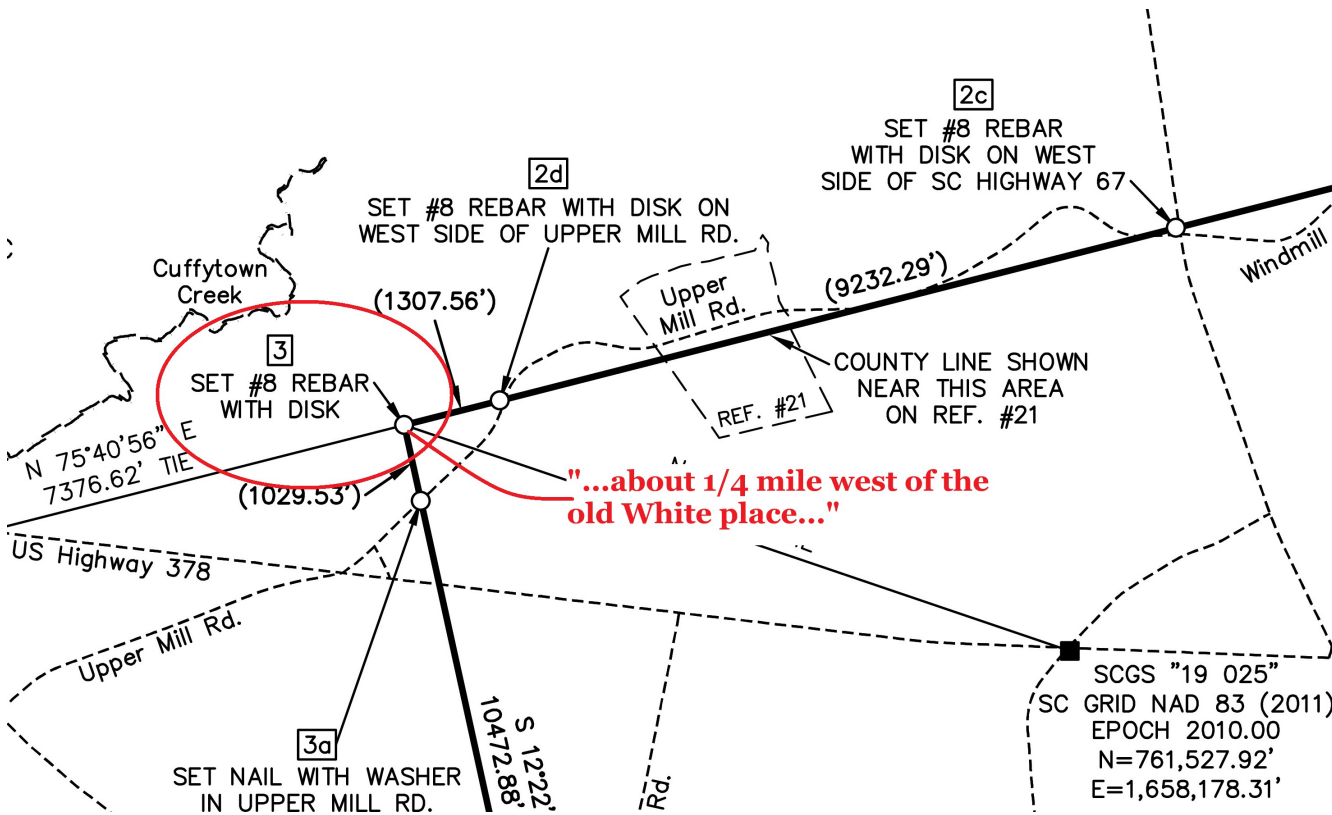


**Fig. 11**



**Fig. 12**

# Edgefield-McCormick County Line



- Corner 3, where the Edgefield-McCormick line leaves the line to the Shinburg bridge is “about 1/4 mile west of the old White place”
- The old White place is gone
- No definite measurements to establish this corner



## Edgefield-McCormick County Line

- The next definite point in the statute description of the Edgefield-McCormick line is “...Cochran’s Bridge on Turkey Creek...”
- Mills Atlas of 1825 shows a Cockran just north of Turkey Creek on what is today SC Hwy 283

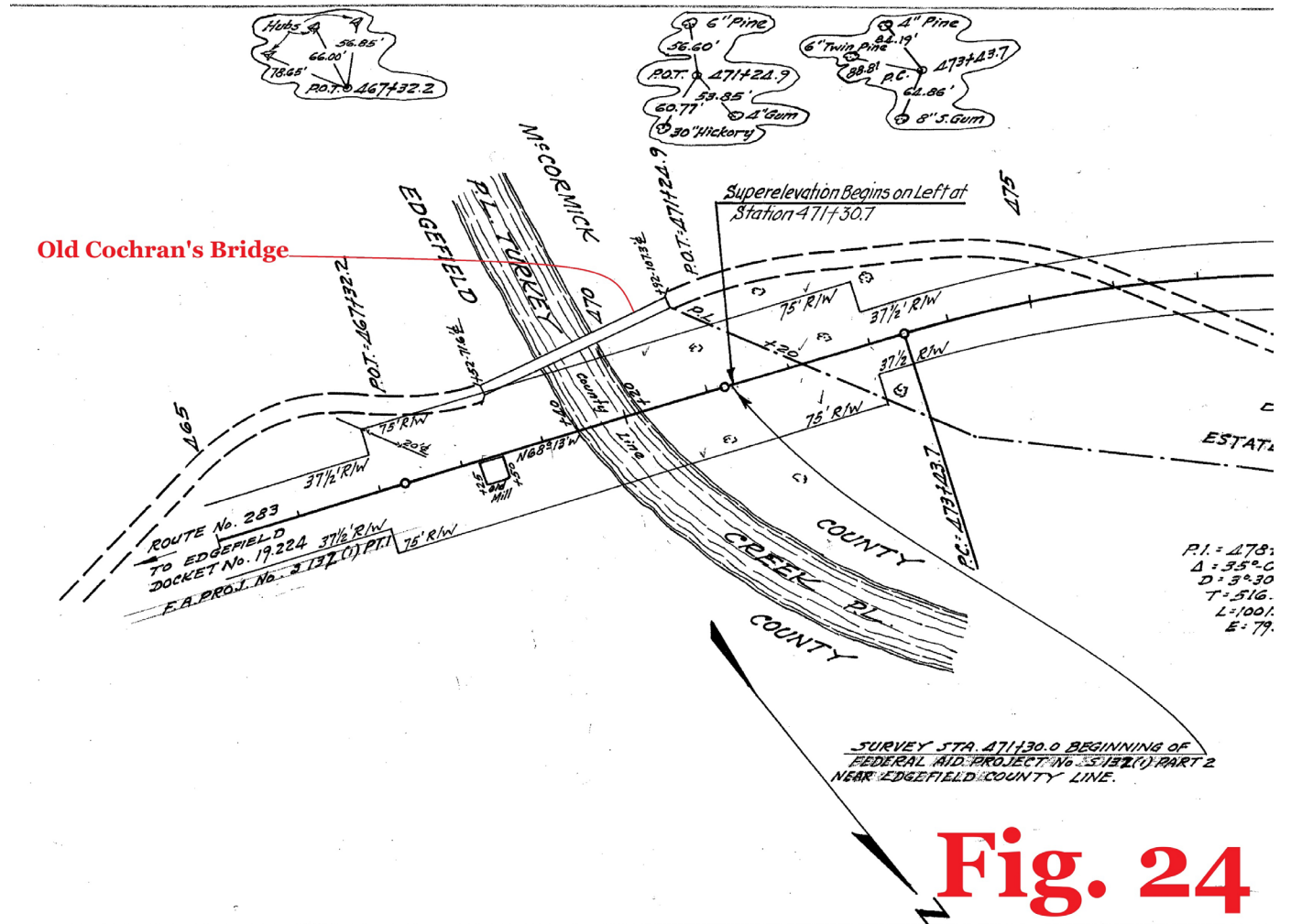


**Fig. 20**



# Edgefield-McCormick County Line

- SCDOT plans from 1942 and 1946 show the old bridge beside the “new” road that is SC Hwy 283 and the current bridge



**Fig. 24**

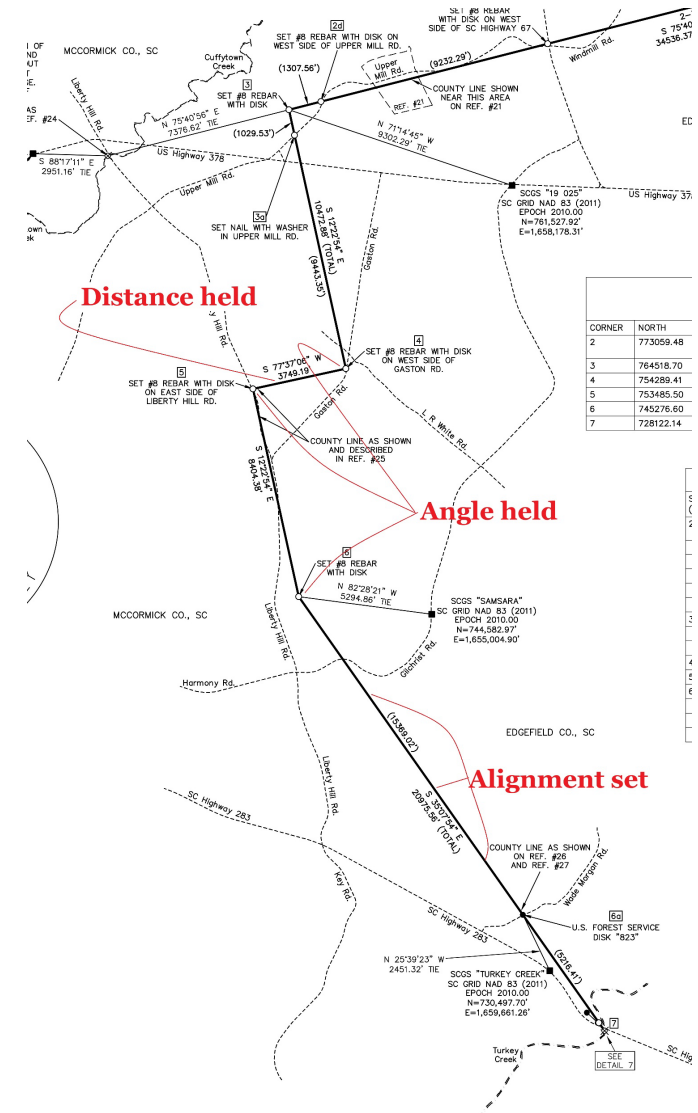
## Edgefield-McCormick County Line

- And the abutments of the old bridge are still in place



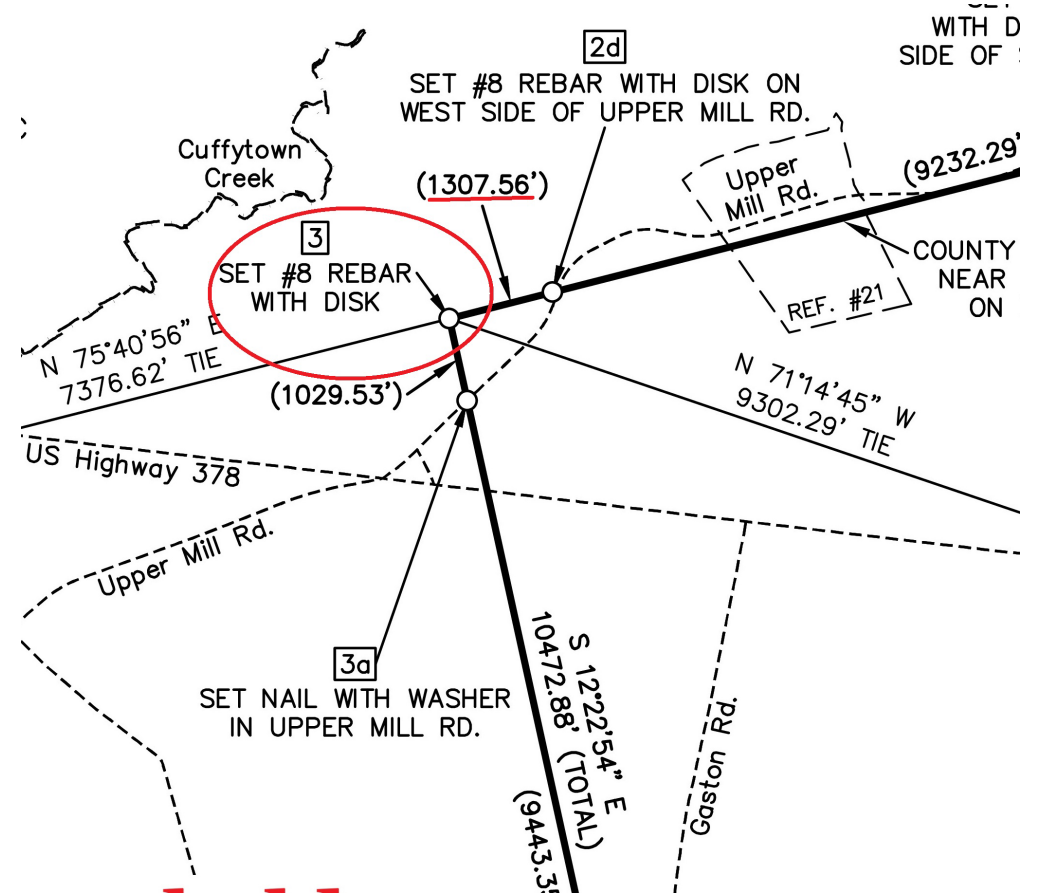
# Edgefield-McCormick County Line

- **Knowns:** 1) the bearing from Cochran's bridge, 2) Corner 5 adjacent Key Road (now Liberty Hill Road), 3) where the county line was determined by the USFS to cross the property line
- Holding the statute distance from Corner 4 to Corner 5, and holding the statute angles at Corners 4, 5, and 6, the resulting figure was slid along the set alignment until everything fit as it should



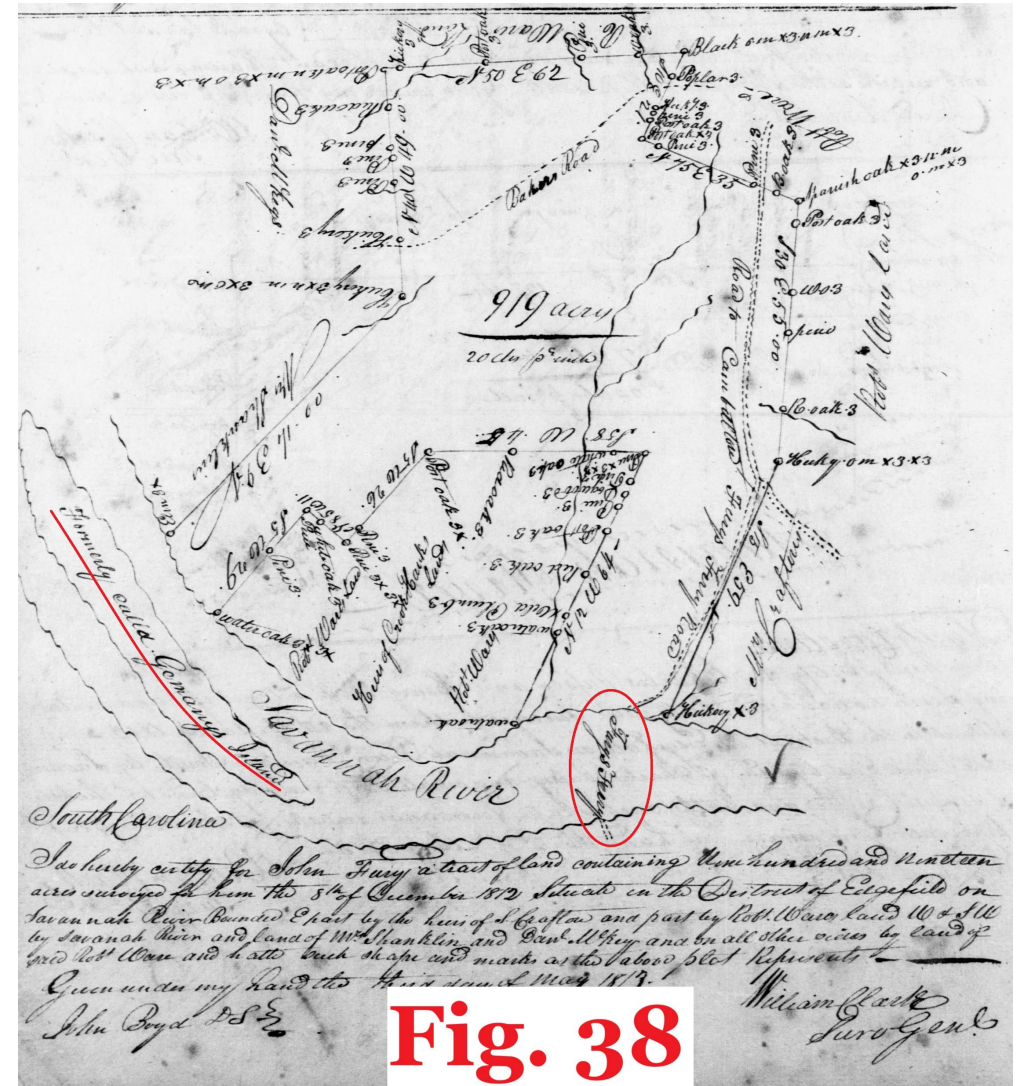
# Edgefield-McCormick County Line

- That results in Corner 3 as shown
- The only statute information for Corner 3 is that it is “*about one-fourth mile west of the old White place*”
- The land where the line crosses Upper Mill Road was owned by the White’s
- A quarter mile is 1320’ versus Corner 3 to road at 1307.56’



# Edgefield-McCormick County Line

- A grant from 1812 shows the location of Fury's Ferry



# Edgefield-McCormick County Line

- A written description from a USFS survey calls for the Corner 45 monument to be in the center of the old Fury's Ferry Road and on the Edgefield-McCormick county line

-5-

Thence, two (2) lines with Tract 102 reversed, S. 35° 50' W., 52.1 chains to Corner 43, a stake set from call. Set a F. S. standard concrete post marked 1206 alongside. S. 11° 45' W., 14.4 chains to Corner 44, a 14" pine on the edge of the backwaters of Savannah River, line of the South Carolina Power Company flood right easement.

Thence, in a general Northwesterly direction up and with the meanders of said backwaters and easement line 200.0 chains to Corner 45, common to Dan McKie tract, a point in edge of said backwater and easement line in the center of the old abandoned Fury's Ferry Road, 0.09 chain east of wire fence on the Edgefield-McCormick County line. Set locust post and scribed bearing trees.

Thence, in a Northwesterly direction with the meanders of the Fury's Ferry Road, 58.0 chains to the place of Beginning, containing TWO THOUSAND, FOUR HUNDRED SIXTEEN AND TWO-TENTHS (2416.2) ACRES. There is excluded however from the foregoing acreage, the acreage of Exception No. 1 of SEVEN-TENTHS (0.7) ACRE which when deducted will leave a net acreage in Tract 238 of TWO THOUSAND, FOUR HUNDRED AND FIFTEEN AND FIVE-TENTHS (2415.5) ACRES, be the same more or less.

#### EXCEPTION NO. 1

##### GRAVEYARD

Beginning at Corner 1, a 4" oak at fence and edge of field. A 16" pine bears S. 82° E., 0.26 chain distant and a 12" pine bears N. 6° E., 0.43 chain distant. N. 27° 00' E., 3.77 chains to Corner 2, a 12" pine marked "X111"; N. 71° 00' E., 1.44 chains to Corner 3, a 10" post oak marked "X111"; S. 9° 00' W., 4.25 chains to Corner 4, a 16" white oak near fence; N. 81° 10' W., 2.40 chains to the Place of Beginning, containing SEVEN-TENTHS (0.7) Acre, be the same more or less.

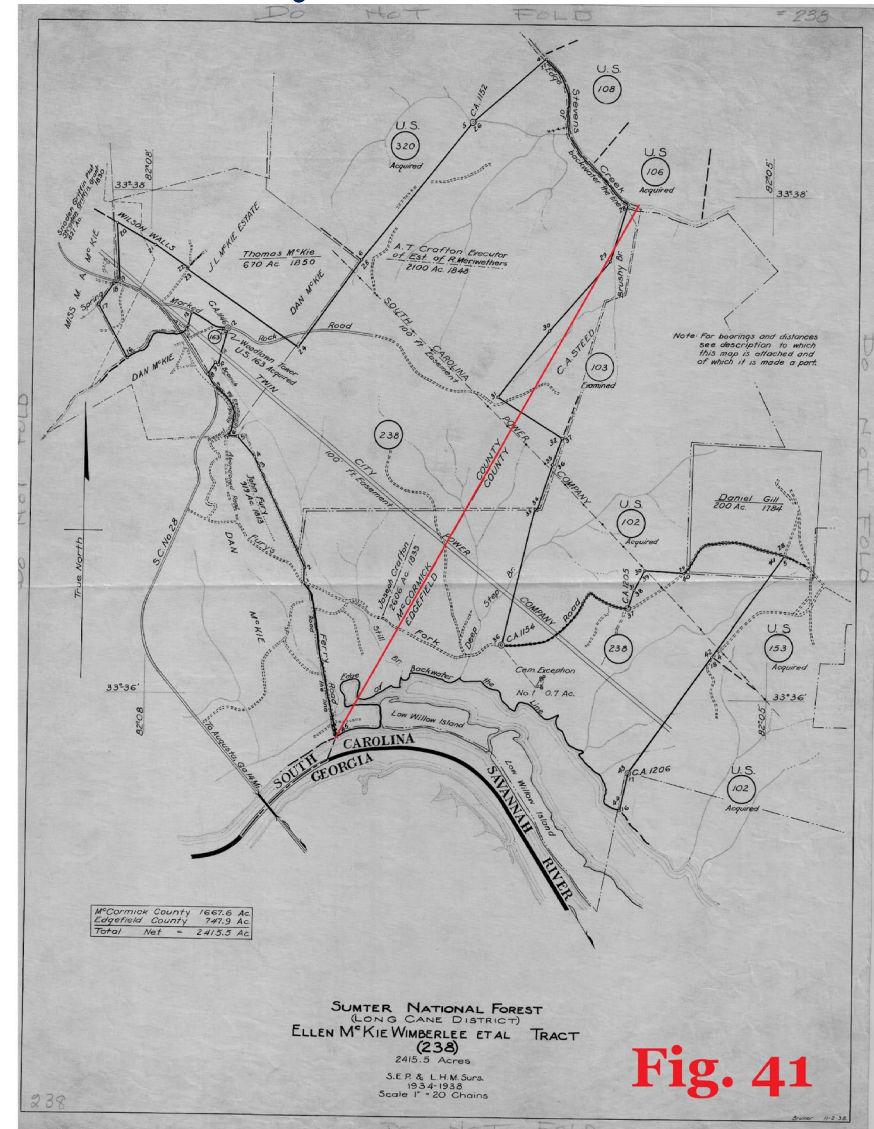
The 100' Right-of-Way shown on the attached map between lines 24-25 and 33-34, and 39-40 and 41-42, is an

**Fig. 42**



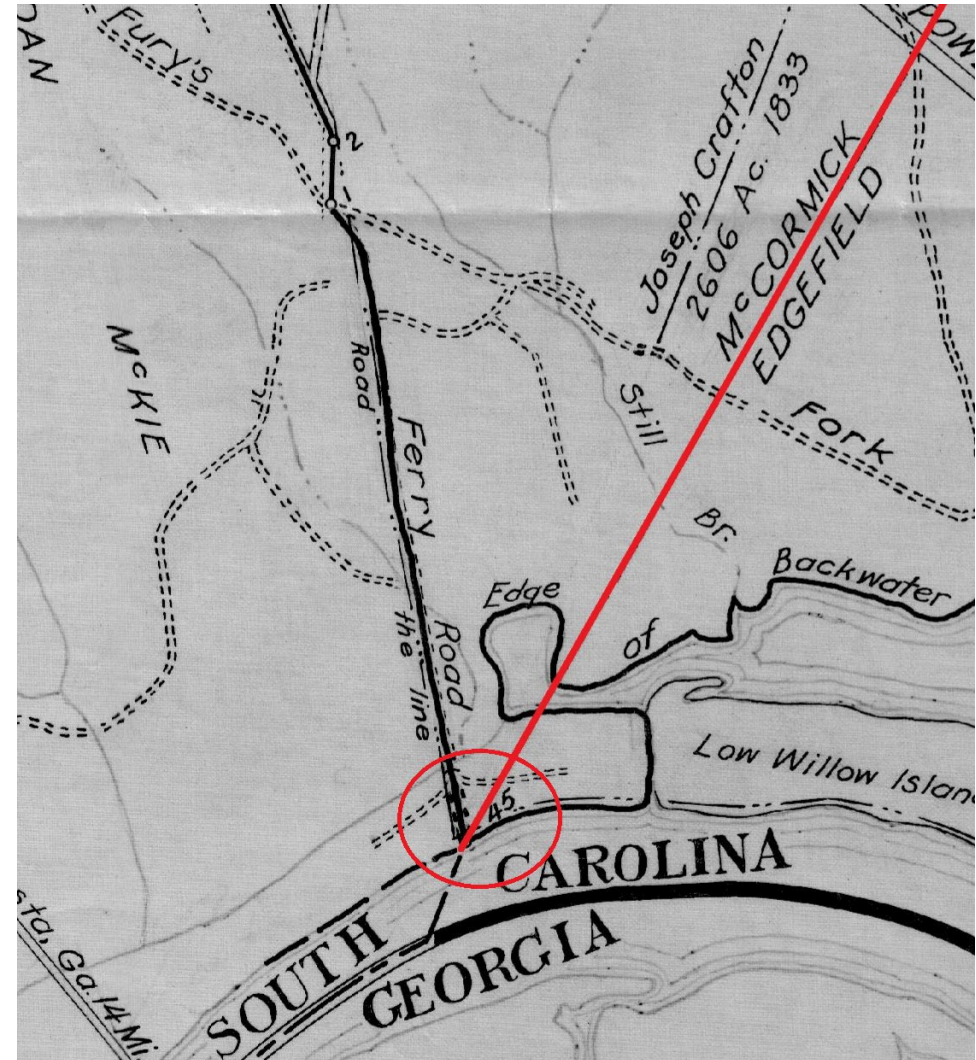
# Edgefield-McCormick County Line

- The USFS survey from 1934-1938 shows the Edgefield-McCormick line from the Savannah River to Stevens Creek



# Edgefield-McCormick County Line

- The monument for USFS Corner 45 has eroded into the Savannah River
- A USFS witness monument is still in place and confirms the location of the still visible old Fury's Ferry roadbed
- The intersection of the roadbed and riverbank is the county corner



# Project Page:

<https://rfa.sc.gov/Edge-Gree-Mcco>

## QUESTIONS?

Or Information You Would Like to Provide?

TYPE IN COMMENTS SECTION

PLEASE CALL: [803-734-3793](tel:803-734-3793)

or EMAIL: [boundary@rfa.sc.gov](mailto:boundary@rfa.sc.gov)

We Will Work to Address Questions Promptly or Direct Questions  
to the Appropriate Agency or Jurisdictional Entity

