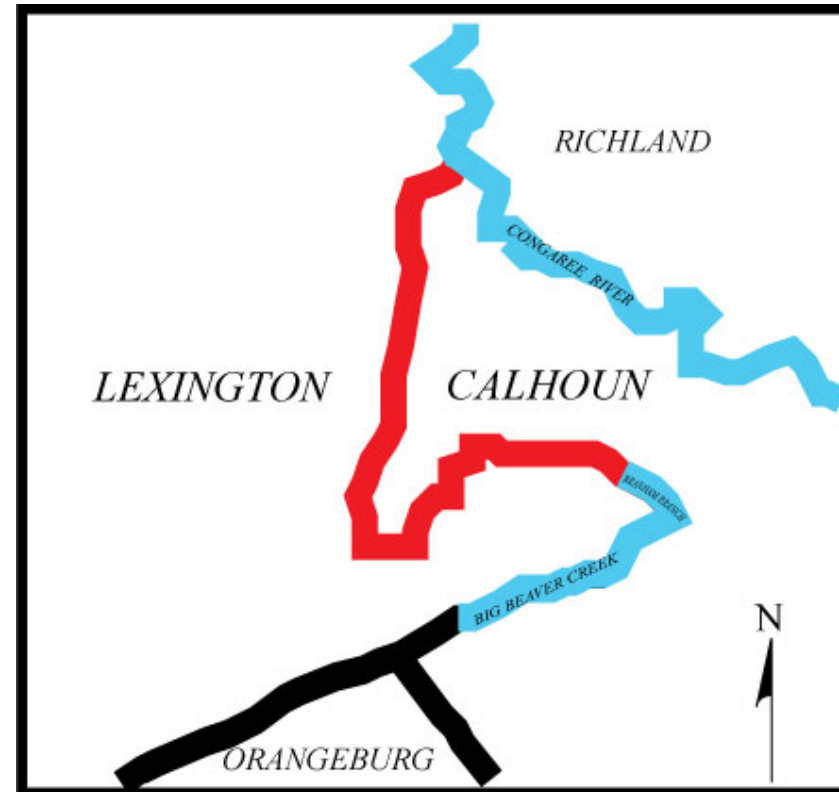




Calhoun Lexington County Boundary Re-establishment



South Carolina Geodetic Survey
County Boundary Program Manager
Jacob Braxton, PLS

County Boundary Re-establishment Program

- Over the last 30+ years, the South Carolina Geodetic Survey has worked with South Carolina counties to help resolve ambiguities between county boundaries

SC Code of Law SECTION 27-2-105

- Act No. 262 of 2014: “so as to authorize and direct the SCGS to clarify county boundaries...”

WHY

- Passage of time and growth has led to confusion over statutory county descriptions and the locations of county boundary lines
- Exact and precise locations and boundaries of the State’s political subdivisions are critical for services, enforcement of property rights and election of public officials.
- Necessary for state government and political subdivisions
- Technology exists now to cost-effectively provide definite and permanent markers of boundary lines



Steps for Clarifying Boundaries

SC Code of Law SECTION 27-2-105 (A)(1)

- Requirements of SCGS:

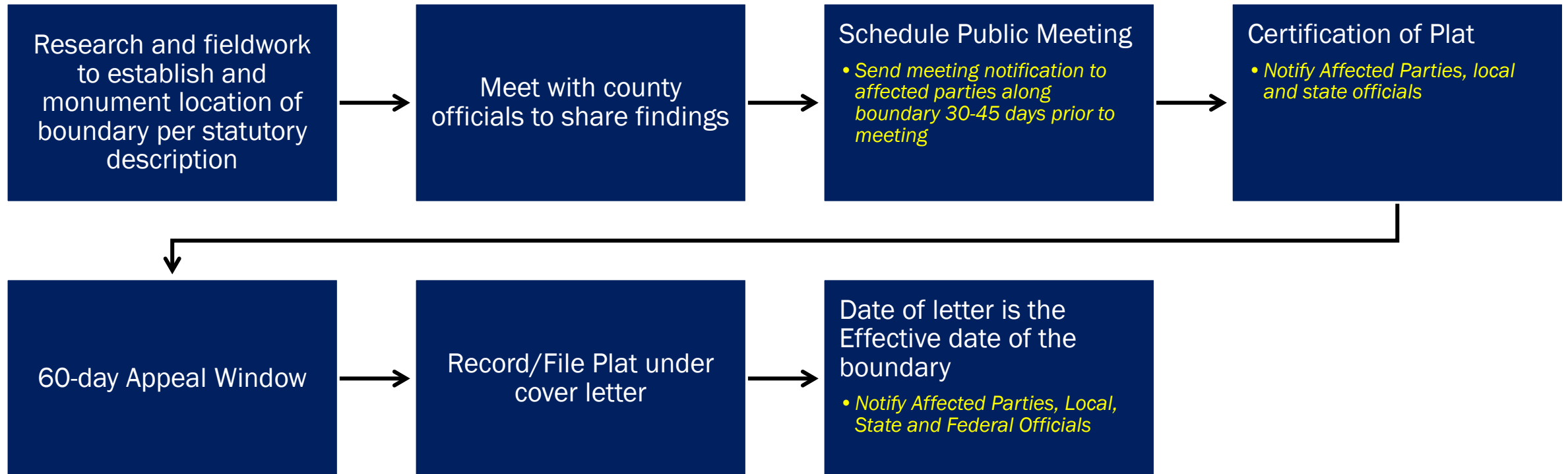
- Where county boundaries are ill-defined, unmarked, or poorly marked, the South Carolina Geodetic Survey on a cooperative basis shall assist counties in defining and monumenting the locations of county boundaries and positioning the monuments using geodetic surveys. The South Carolina Geodetic Survey (SCGS) shall seek to clarify the county boundaries as defined in Chapter 3, Title 4. The SCGS shall analyze archival and other evidence and perform field surveys geographically to position all county boundaries in accordance with statutory descriptions. Physical and descriptive points defining boundaries must be referenced using South Carolina State Plane Coordinates.

- Requirements of SCGS:

- Upon reestablishing county boundary, SCGS shall certify its work and within 30 days of certification:
- Provide copies to the administrator of each affected county; Provide written notification to affected parties
- Provide notice and copies to the public through its official website and or other means it considers appropriate; and
- Notify as it determines appropriate, other affected state and federal agencies
- (Initiates 60 Day Appeal Process)
- Certified Surveys submitted to Secretary of State, Register of Deeds Offices, and South Carolina Department of Archives with Cover Letter
- Date of the cover letter is the date the surveys become effective
- Introduce Legislation to update Code of Law to reflect clarified boundary with State Plane Coordinates



SCGS County Boundary Clarification Process



SC Code of Law SECTION 27-2-105 (B) (1)

- **Affected Parties Disagreeing with SCGS:**
 - May file request for a contested case hearing with the SC Administrative Law Court
 - This decision may be appealed
- **“Affected Party”**
 - Governing body of an affected county
 - Governing body of a political subdivision of this State
 - An elected official, other than a statewide elected official
 - A property owner or an individual residing in the certification zone
 - A business entity located in the certification zone
 - A nonresident individual who owns or leases real property situated in the certification zone



Code of law

SECTION 4-3-90. Calhoun County.

“Calhoun County is bounded as follows: beginning in Lexington County on the Congaree River at a point where the land line between land now or formerly owned by **C. M. Cremaretie** and land now or formerly owned by Vandy Spears strikes said river and running the land line between said lands (Said Cremaretie land is in and said **Spears** land is out of Calhoun County) crossing the State Road on this same land line, continuing straight line 125 chains to a pine on the Pine Plain Road, thence S. 21° 50' W. 16.50 chains to pine on same road; thence S. 10° W. 71 chains to a stake on land now or formerly owned by **Nina Davis**; thence S. 23° E. on said line (**Said Davis land is out of** and land now or formerly owned by **Geiger is in Calhoun County**) crossing the Savanay Hunt Creek (Land now or formerly owned by **Crawley is out of Calhoun County**) at 45 chains to a pine, total distance 103 chains, then S. 11° W. to a dead pine on Pine Plain Road, distance 3 miles, S. 2° E. with road 20 chains, same line 55 chains to Big Sandy Run near the south of Huckabass Mill, continuing to 1 mile, then S. 36.50° W. 35 chains to a pine near Pine Plain Road, S. 29.50° W. said road line, 23.50 chains, dead pine then S. 33° W. 53 chains to pine and stake on Rast land, then S. 9.50° W. 11 chains pine, S. 1° E. straight line to line of land now or formerly owned by **Mrs. R. L. Baker**, then with said line to a corner near Camp Ground Road, then a straight line to **Orangeburg Road** near Porterfield Mill, then a direct line to the **head of Branham Branch.....**”

SECTION 4-3-370. Lexington County.

“Lexington County is bounded on the northeast and east by Richland County; on the southeast by Orangeburg and Calhoun Counties.....”



SC Code of Law SECTION 27-2-105 (B) (1)

- **Affected Parties Disagreeing with SCGS:**
 - May file request for a contested case hearing with the SC Administrative Law Court
 - This decision may be appealed
- **“Affected Party”**
 - Governing body of an affected county
 - Governing body of a political subdivision of this State
 - An elected official, other than a statewide elected official
 - A property owner or an individual residing in the certification zone
 - A business entity located in the certification zone
 - A nonresident individual who owns or leases real property situated in the certification zone



Project Page:

<https://rfa.sc.gov/Calh-Lexi>

QUESTIONS?

Or Information You Would Like to Provide?

TYPE IN COMMENTS SECTION

PLEASE CALL: [803-734-3793](tel:803-734-3793)

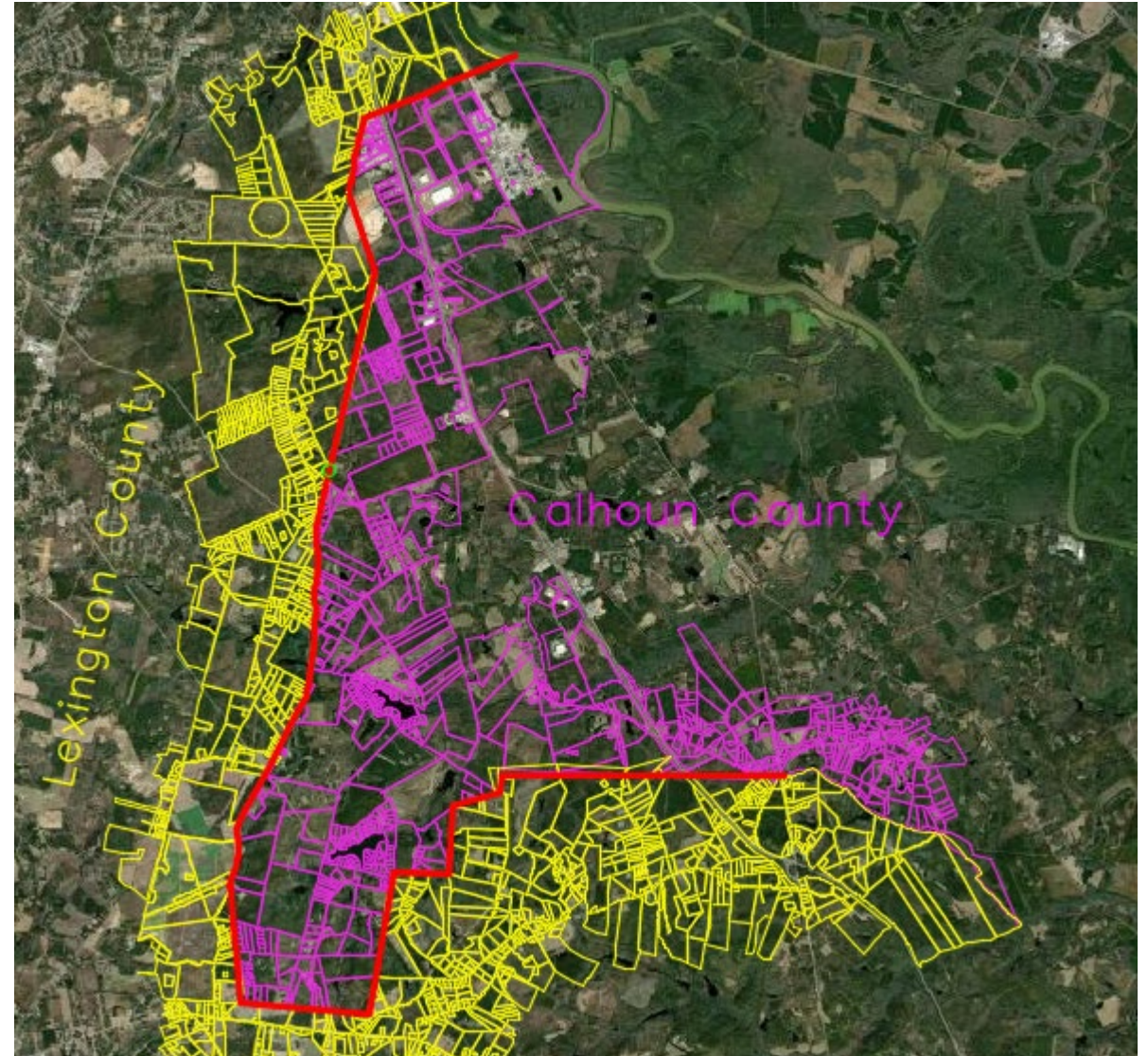
or EMAIL: boundary@rfa.sc.gov

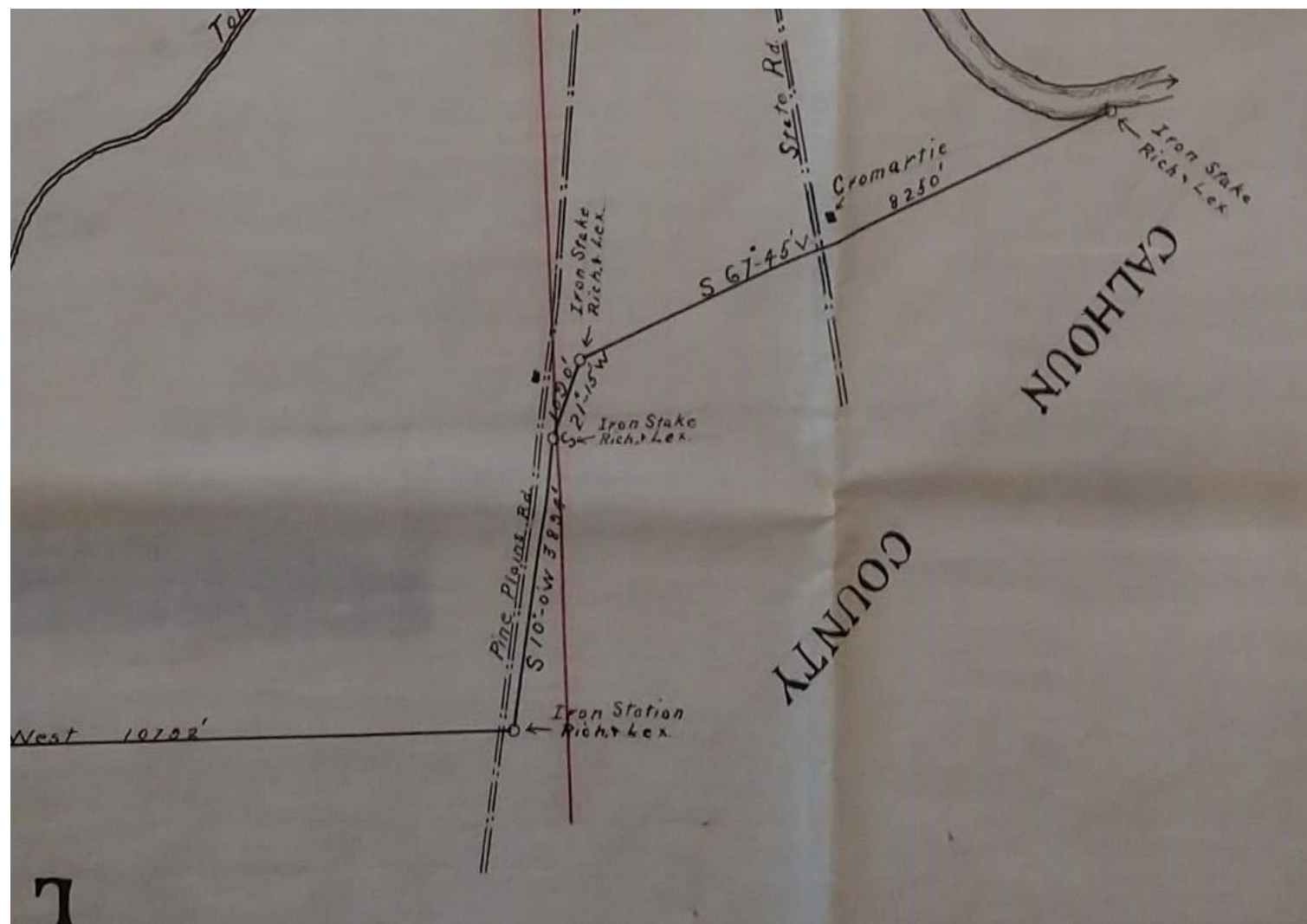
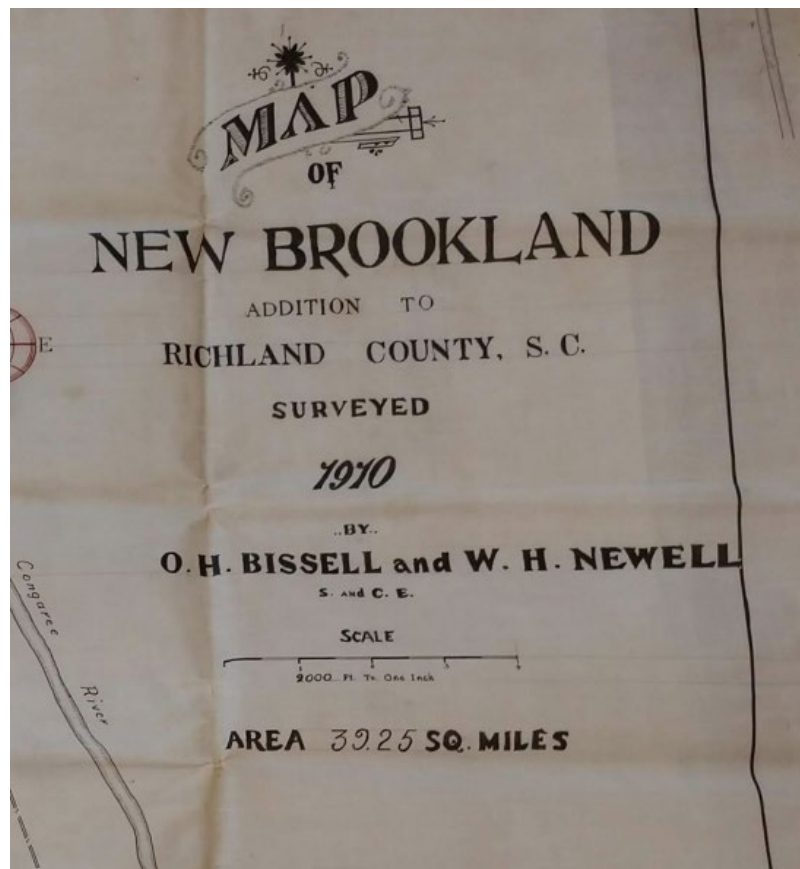
We Will Work to Address Questions Promptly or Direct Questions
to the Appropriate Agency or Jurisdictional Entity

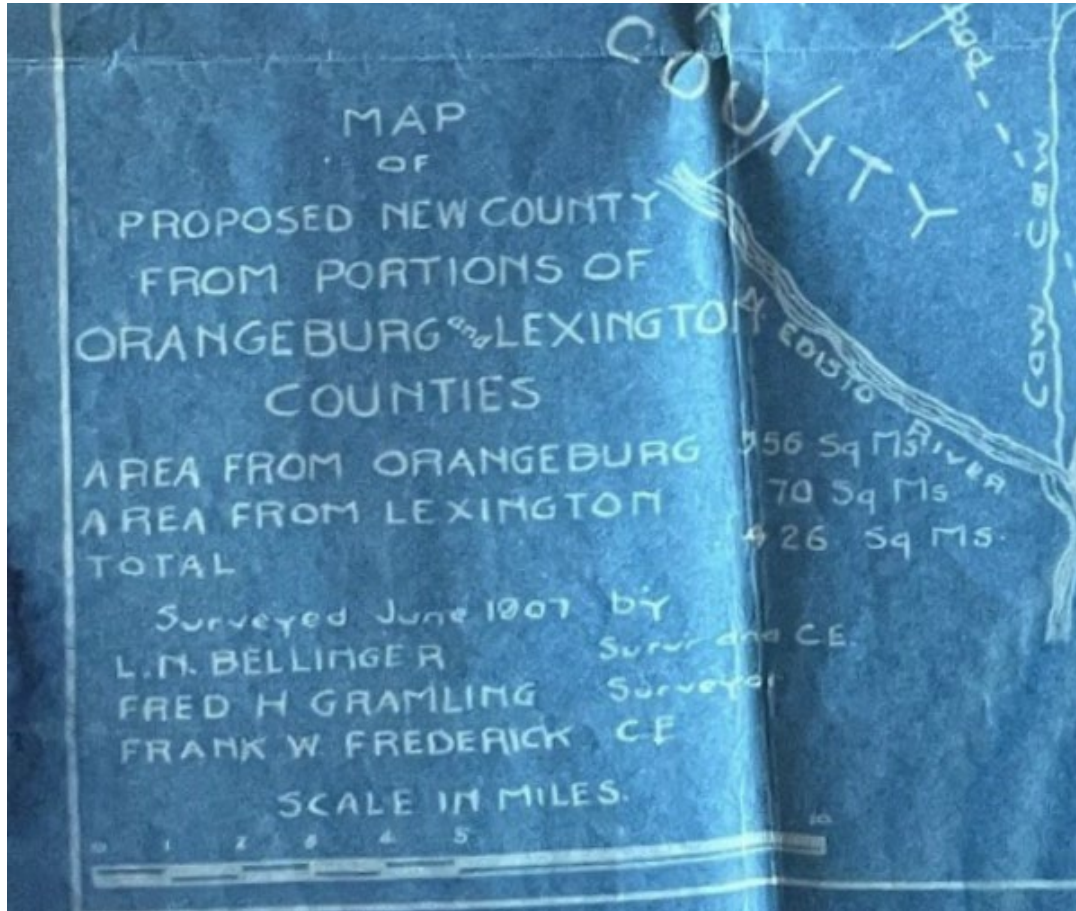


Presentation on the Survey









- SECTION 4-3-90. Calhoun County.

- “Calhoun County is bounded as follows: beginning in Lexington County on the Congaree River at a point where the land line between land now or formerly owned by C. M. Cremaretie and land now or formerly owned by Vandy Spears strikes said river and running the land line between said lands (Said Cremaretie land is in and said Spears land is out of Calhoun County) crossing the State Road on this same land line, continuing straight line 125 chains to a pine on the Pine Plain Road, thence S. 21° 50' W. 16.50 chains to pine on same road; thence S. 10° W. 71 chains to a stake on land now or formerly owned by Nina Davis; thence S. 23° E. on said line (Said Davis land is out of and land now or formerly owned by Geiger is in Calhoun County) crossing the Savanay Hunt Creek (Land now or formerly owned by Crawley is out of Calhoun County) at 45 chains to a pine, total distance 103 chains, then S. 11° W. to a dead pine on Pine Plain Road, distance 3 miles, S. 2° E. with road 20 chains, same line 55 chains to Big Sandy Run near the south of Huckabass Mill, continuing to 1 mile, then S. 36.50° W. 35 chains to a pine near Pine Plain Road, S. 29.50° W. said road line, 23.50 chains, dead pine then S. 33° W. 53 chains to pine and stake on Rast land, then S. 9.50° W. 11 chains pine, S. 1° E. straight line to line of land now or formerly owned by Mrs. R. L. Baker, then with said line to a corner near Camp Ground Road, then a straight line to Orangeburg Road near Porterfield Mill, then a direct line to the head of Branham Branch.....”

