

REFERENCES:

1) Descriptions in SOUTH CAROLINA CODE:

SECTION 4-3-270. Georgetown County:

"... From Leneud's Ferry (abandoned) on the Southwest bank of the Santee River; thence northeastward from said point on said line to the main road leading from Leneud's Ferry (abanodoned) across Potato Ferry (abandoned) on the Black River to Britton's Ferry (abandoned) on the Great Pee Dee River, the point of origin."

SECTION 4-3-520. Williamsburg County:

"...A line commencing on the Great Pee Dee River, the dividing line between Williamsburg, Marion and Georgetown Counties, and running the road leading from Britton's and Bradley's Ferry, on said Great Pee Dee River, to Leneud's Ferry, on Santee River, the said road being the boundary line on the southeast separating it from Georgetown County,...."

2) SCDOT :

- Plan and Profile of Proposed State Highway. Docket Number 8 2245.202, State Rt. No. 41; Berkeley-Georgetown-Williamsburg Counties. Approach to Santee River. 1948
- Plan and Profile of Proposed State Highway. Project No. W.P.S.S. 413, State Rt. No. 41; Georgetown-Williamsburg Counties, section between Andrews and Jamestown. 1936
- Plan and Profile of Proposed State Highway. State Project No. 413-b Parts 1-2-3; Georgetown-Williamsburg Counties; S.C. Rt. 41 & 41 BS, From Andrews toward Jamestown. 1938.
- Plan and Profile of Proposed State Highway. File No. 22.619 Project No. BNH-WCCB(001). Georgetown-Williamsburg Counties. US 521- Andrews Bypass, From SC Rt. 41 Truck Rt. to US 521 East of Andrews. 2005.
- Plan and Profile of Proposed State Highway. Project No. 674, Docket No's. 22.206 & 45.221. Georgetown-Williamsburg Counties. Route No. 41 & 41 BS, From Andrews Town Limit to Bridge approaches over Black River. 1938.
- Plan and Profile of Proposed State Highway. Project No. 2511-C(1), Docket No's. 22.215 & 45.219. Georgetown-Williamsburg Counties. Route No. 41, From Black River to Intersection with Route No. 512. 1941.
- Plan and Profile of Proposed State Highway. Federal Aid Project No. F 2511(3), Docket No's. 22.235 & 45.238 Part 2. Georgetown-Williamsburg Counties. Route No. 41, From Black River to Intersection with Route No. 512. 1945.
- As-Built Plans and Profile for State Highway. File No. 5585150, F.A. Proj. No. P027172. Georgetown-Williamsburg Counties. SC-41/ SC-51/ S-45-24 (Nesmith Rd). Intersection Improvement at SC RTE. 51 (Browns Ferry Rd) & Rd S-24 (Nesmith Rd.) 2018.

3) Georgetown Plat Book S 271 Page 9-B

Plat prepared for Thomas D & Kim H. Rufus, 2.11 acres in Georgetown County, showing property corners found in Old County Line Road (Abandoned). Surveyed by Samuel M. Harper PLS #1003, April 2, 1998.

4) Georgetown Plat Book 3709 Page 44

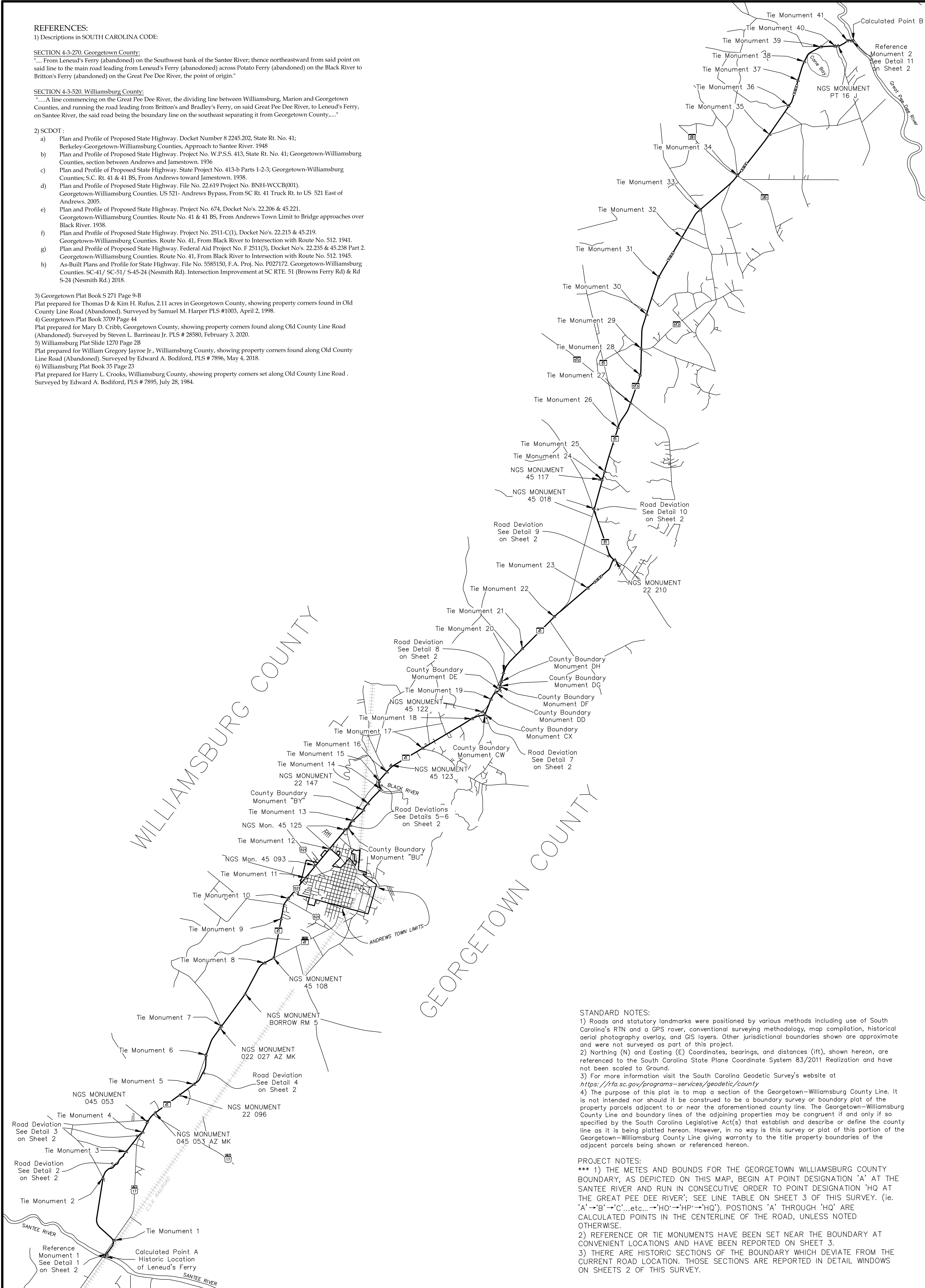
Plat prepared for Mary D. Cribb, Georgetown County, showing property corners found along Old County Line Road (Abandoned). Surveyed by Steven L. Barrineau Jr. PLS # 28580, February 3, 2020.

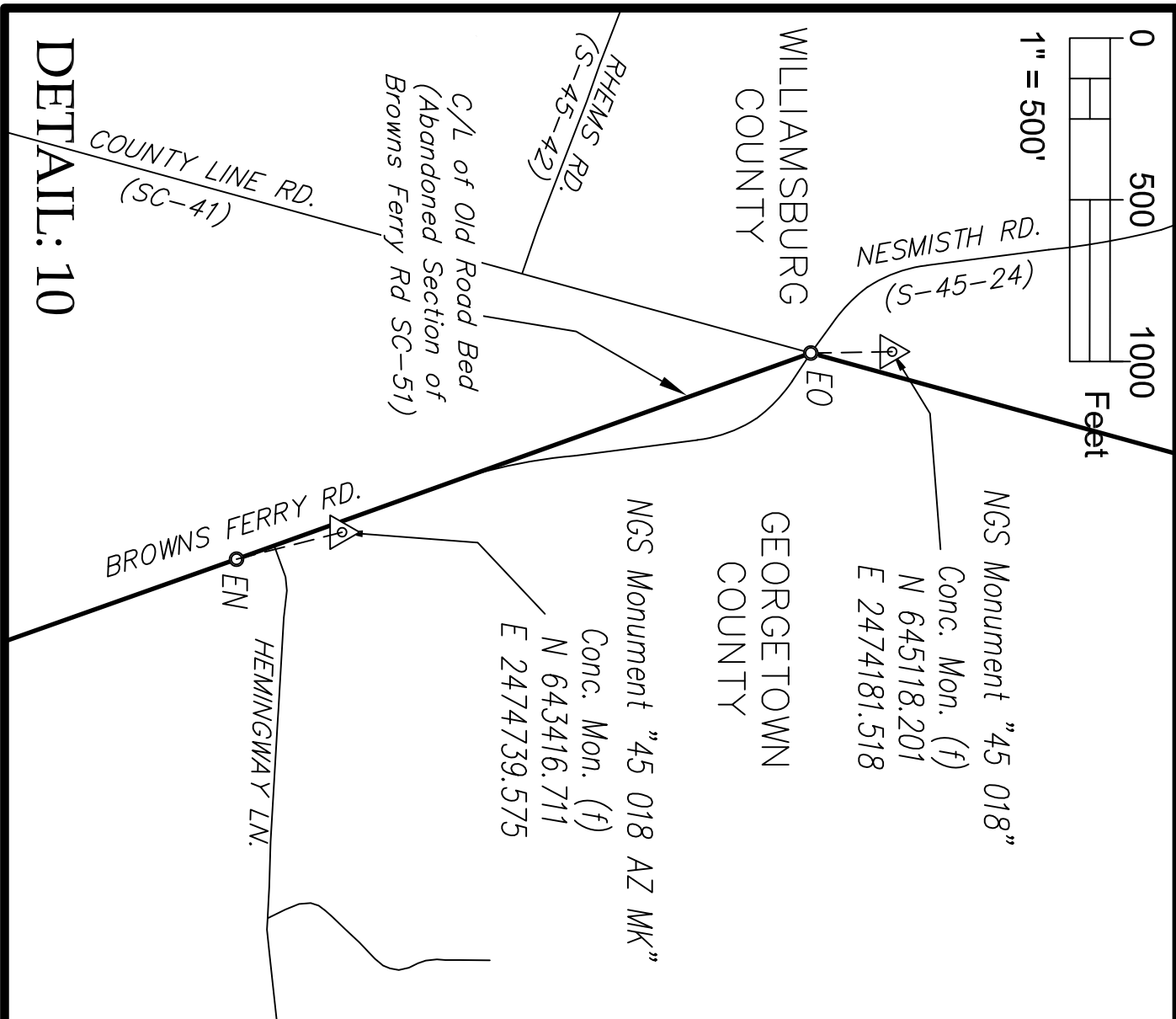
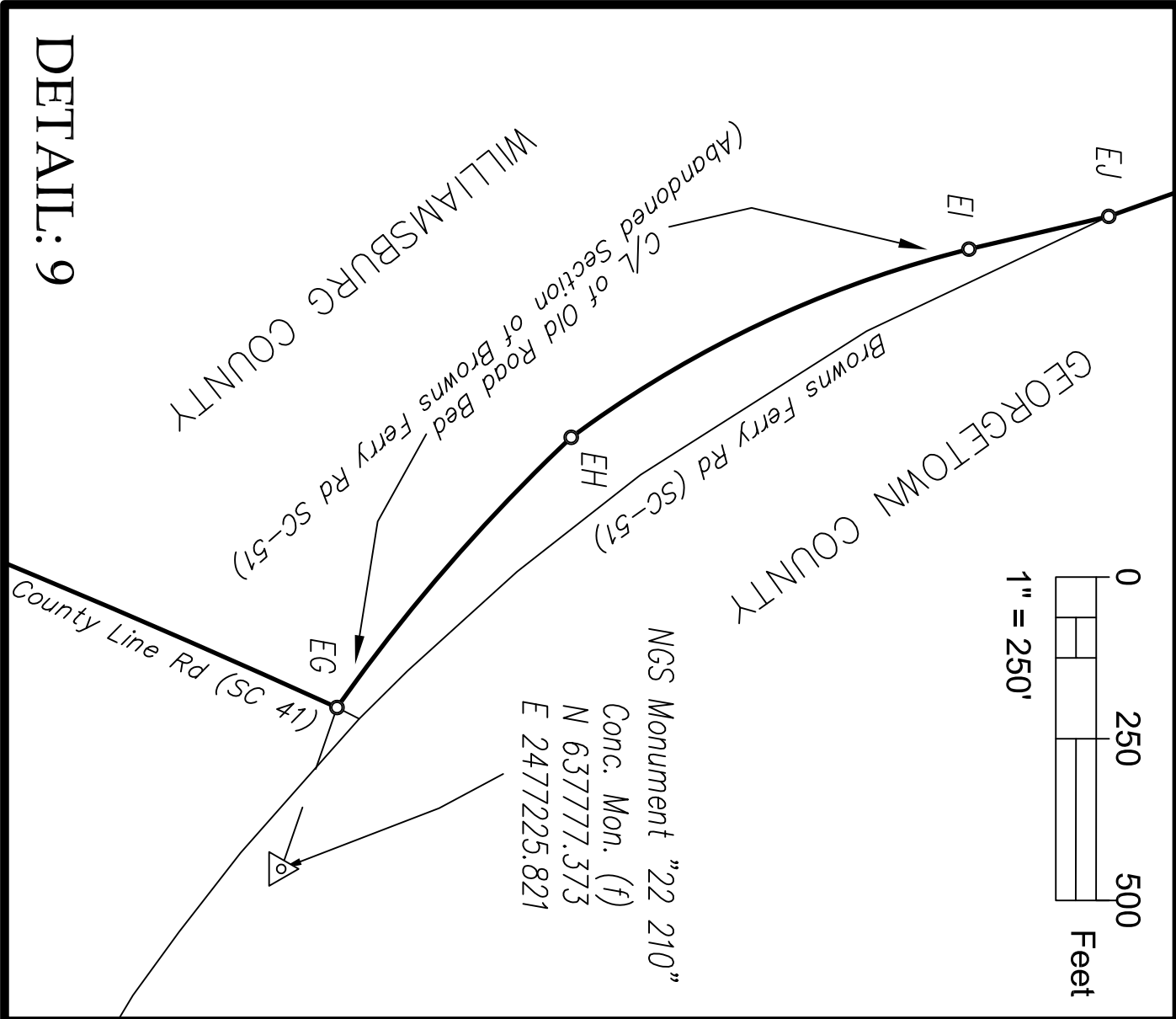
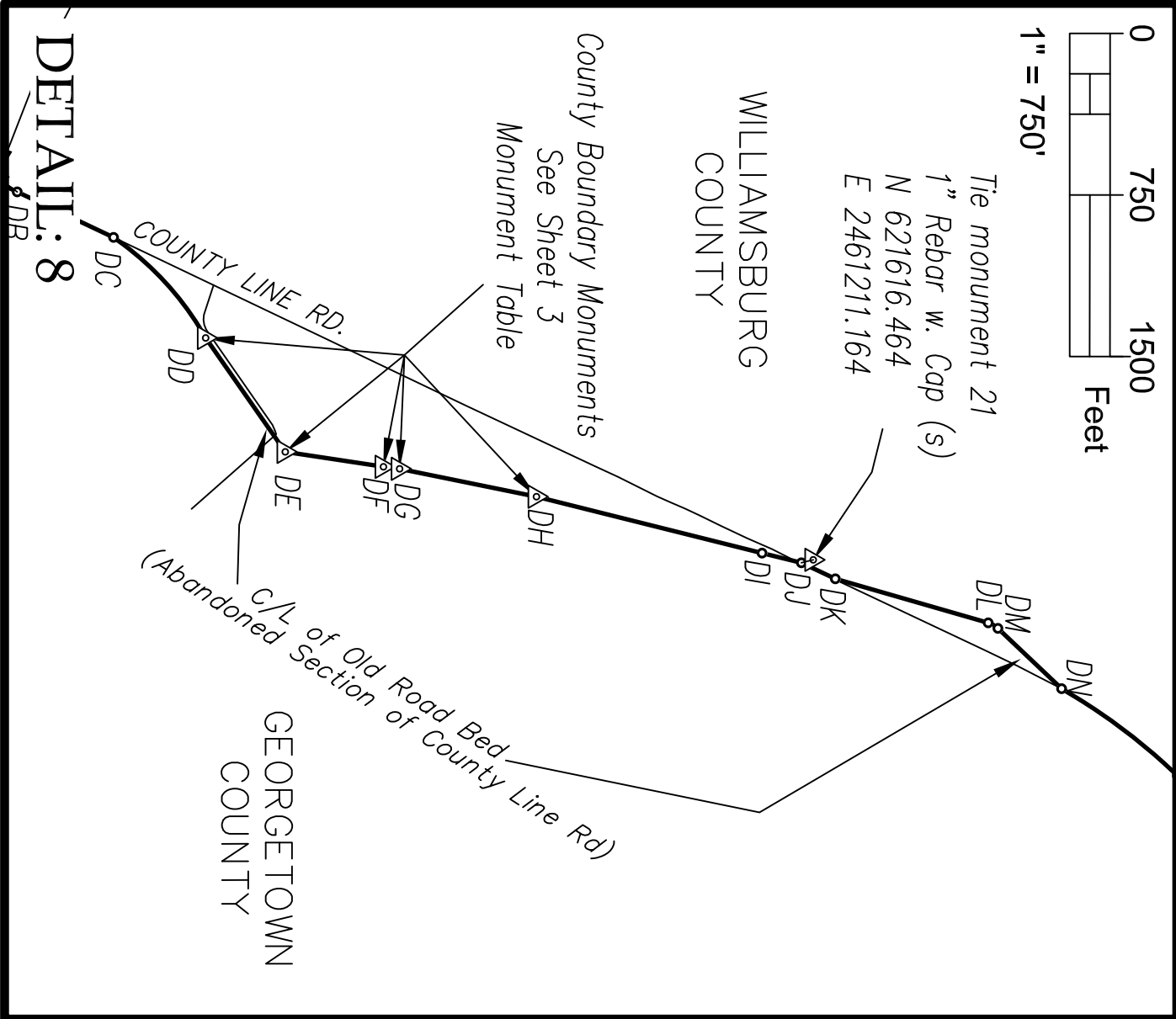
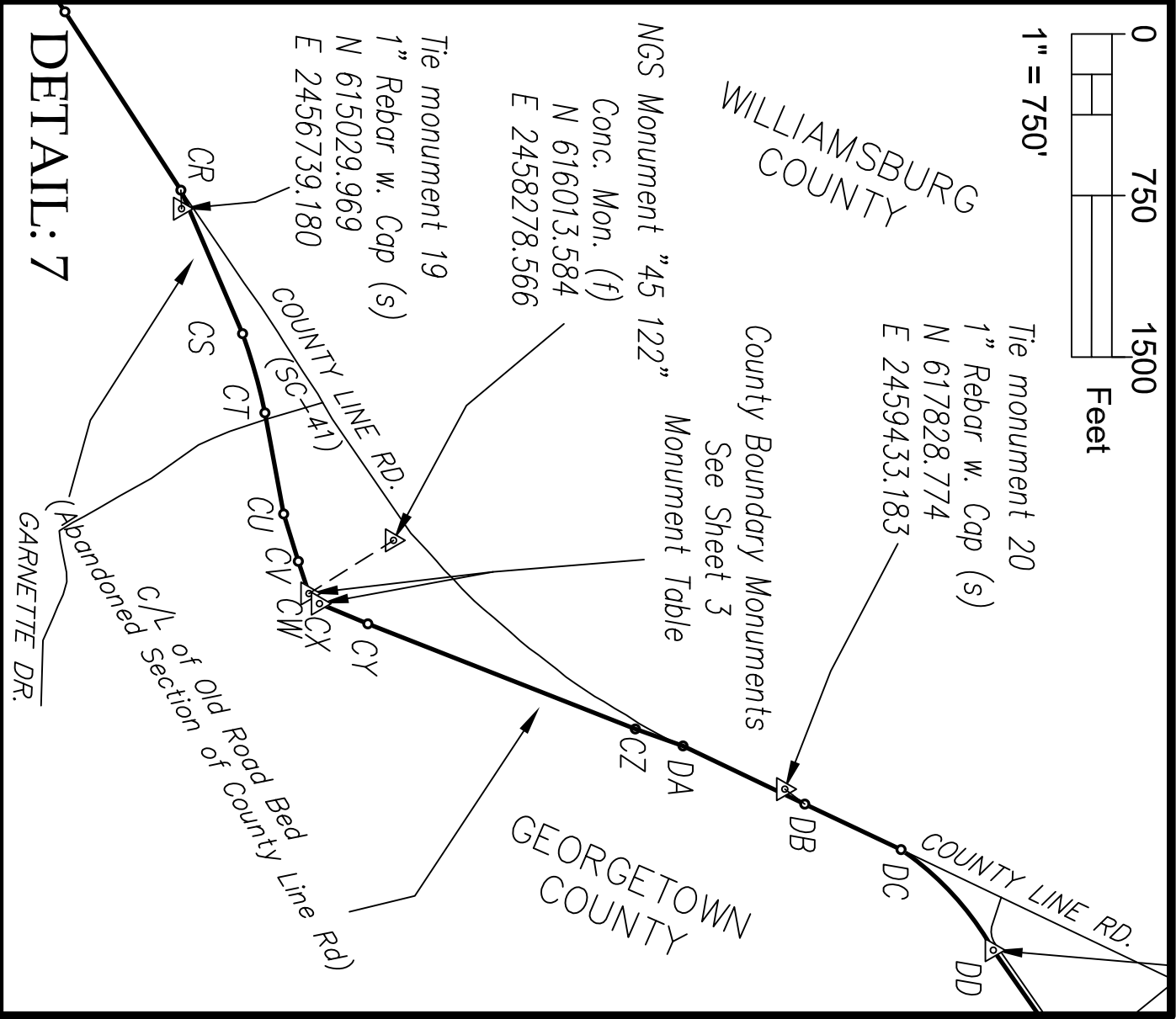
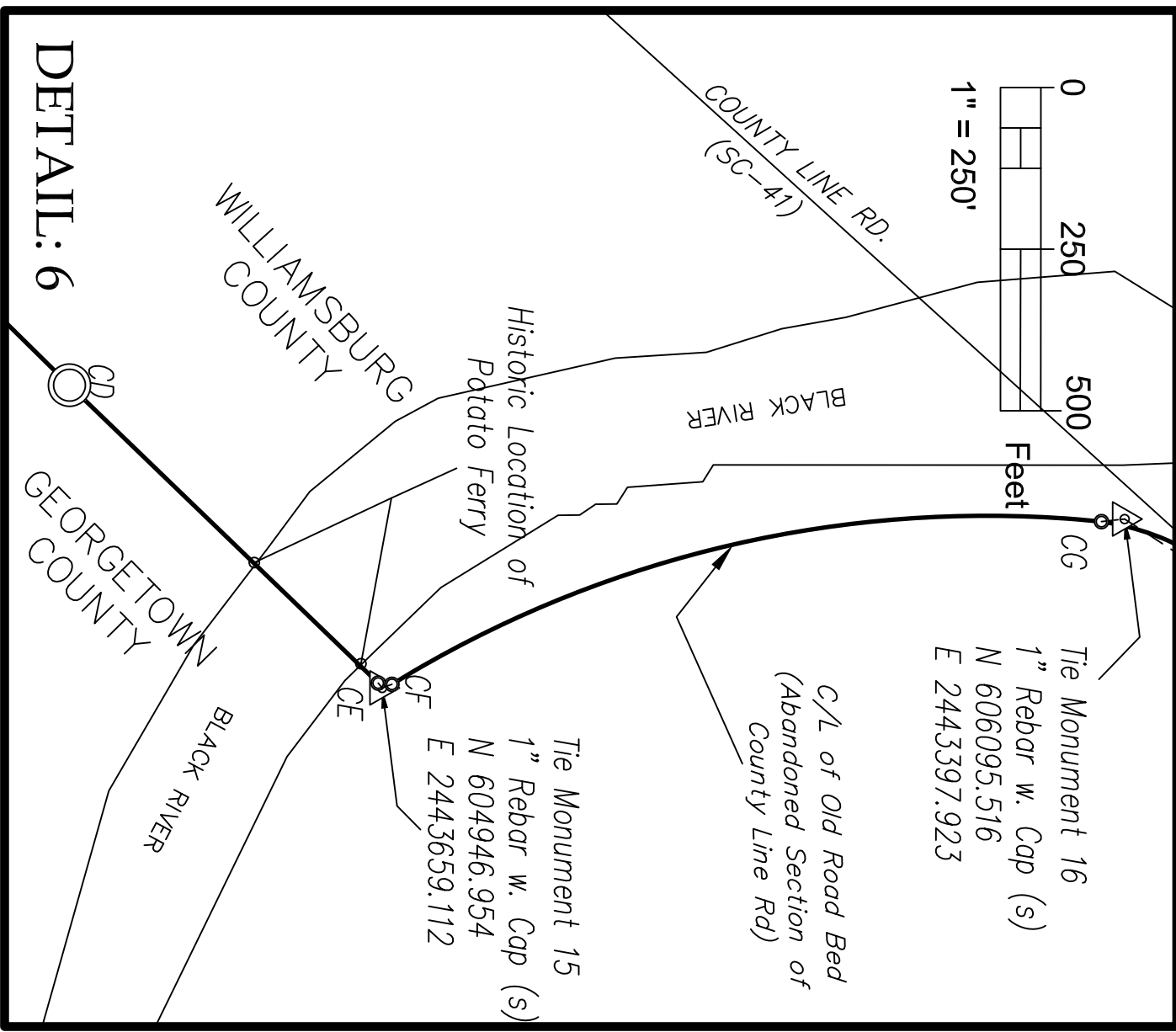
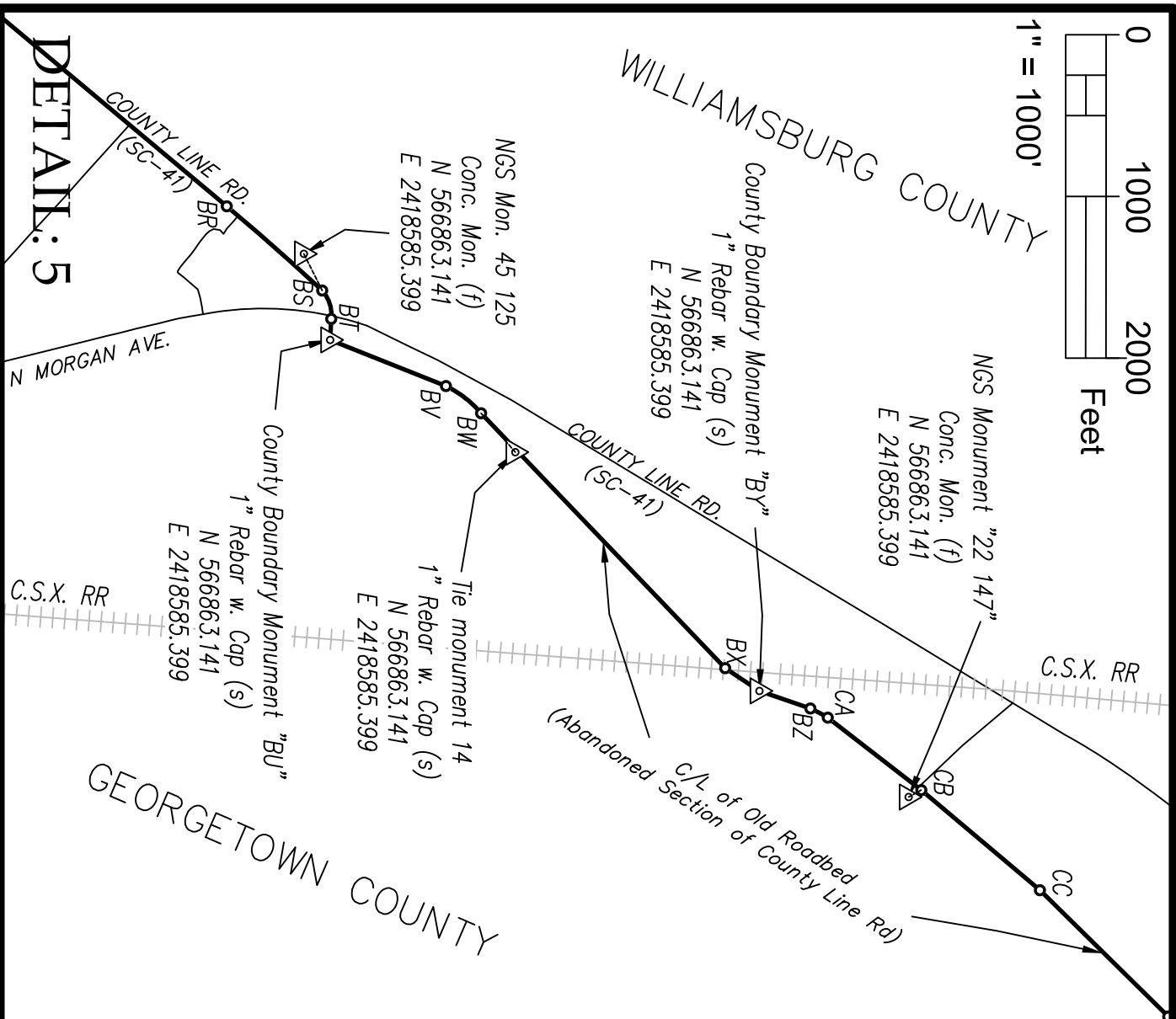
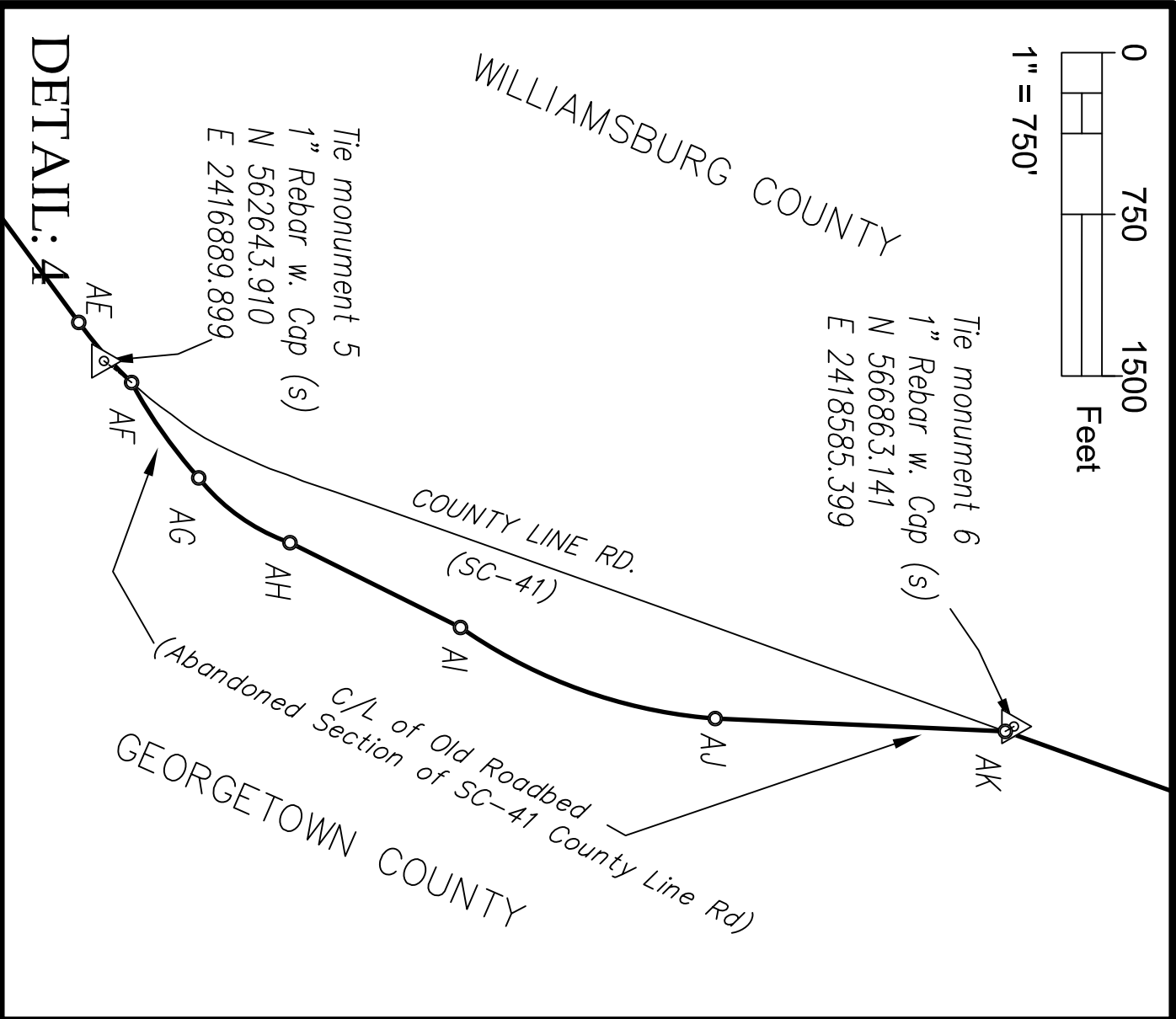
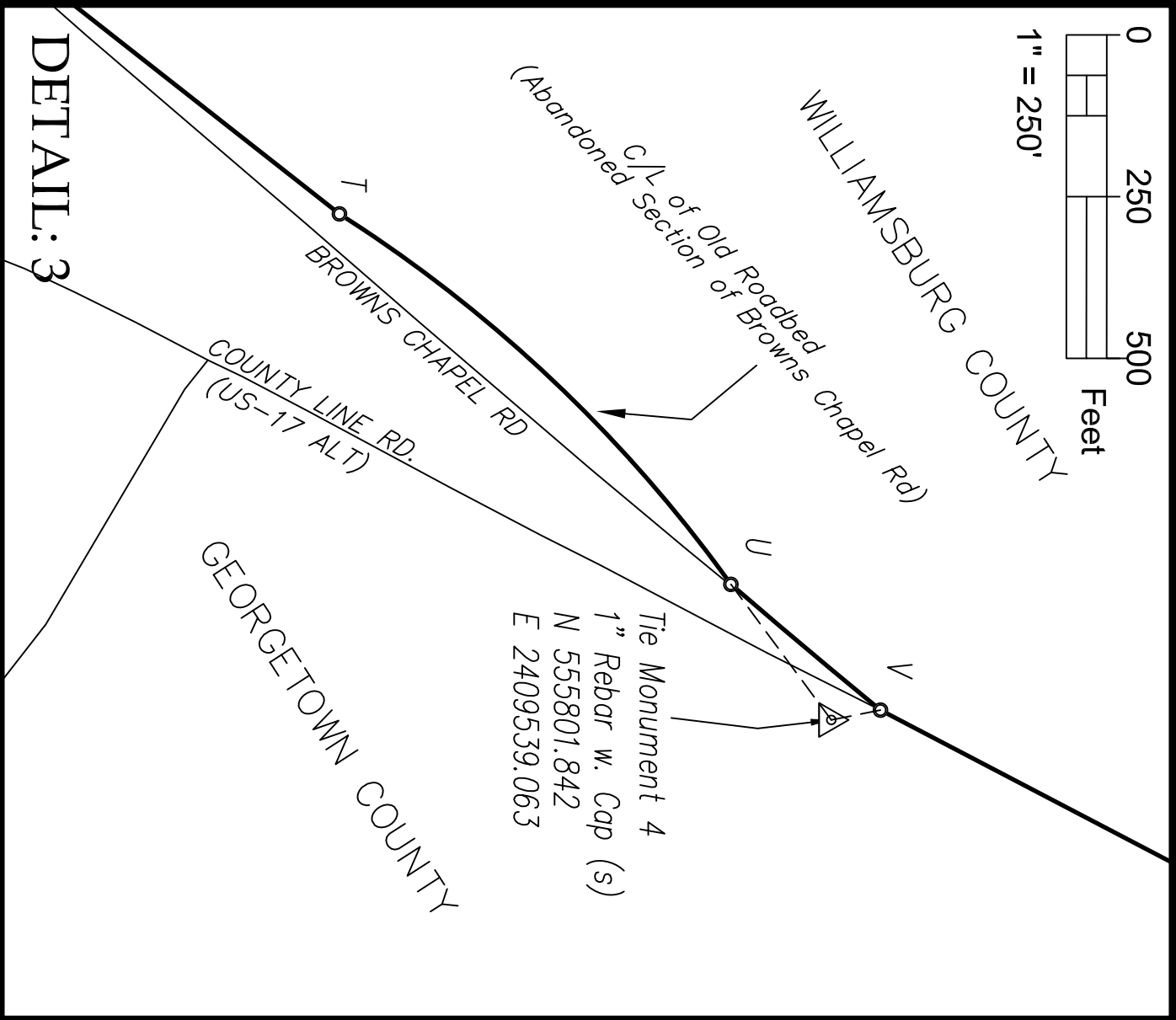
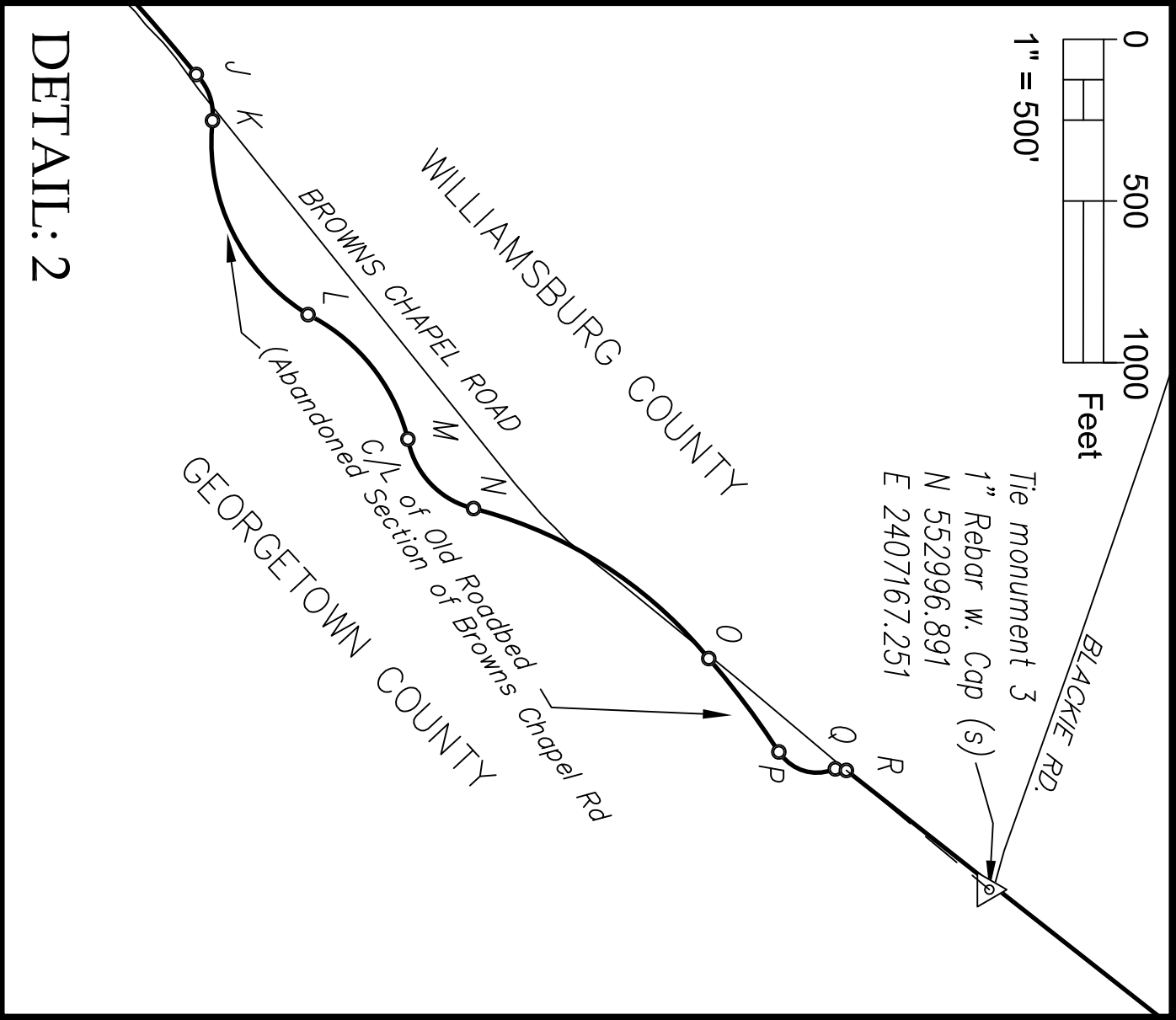
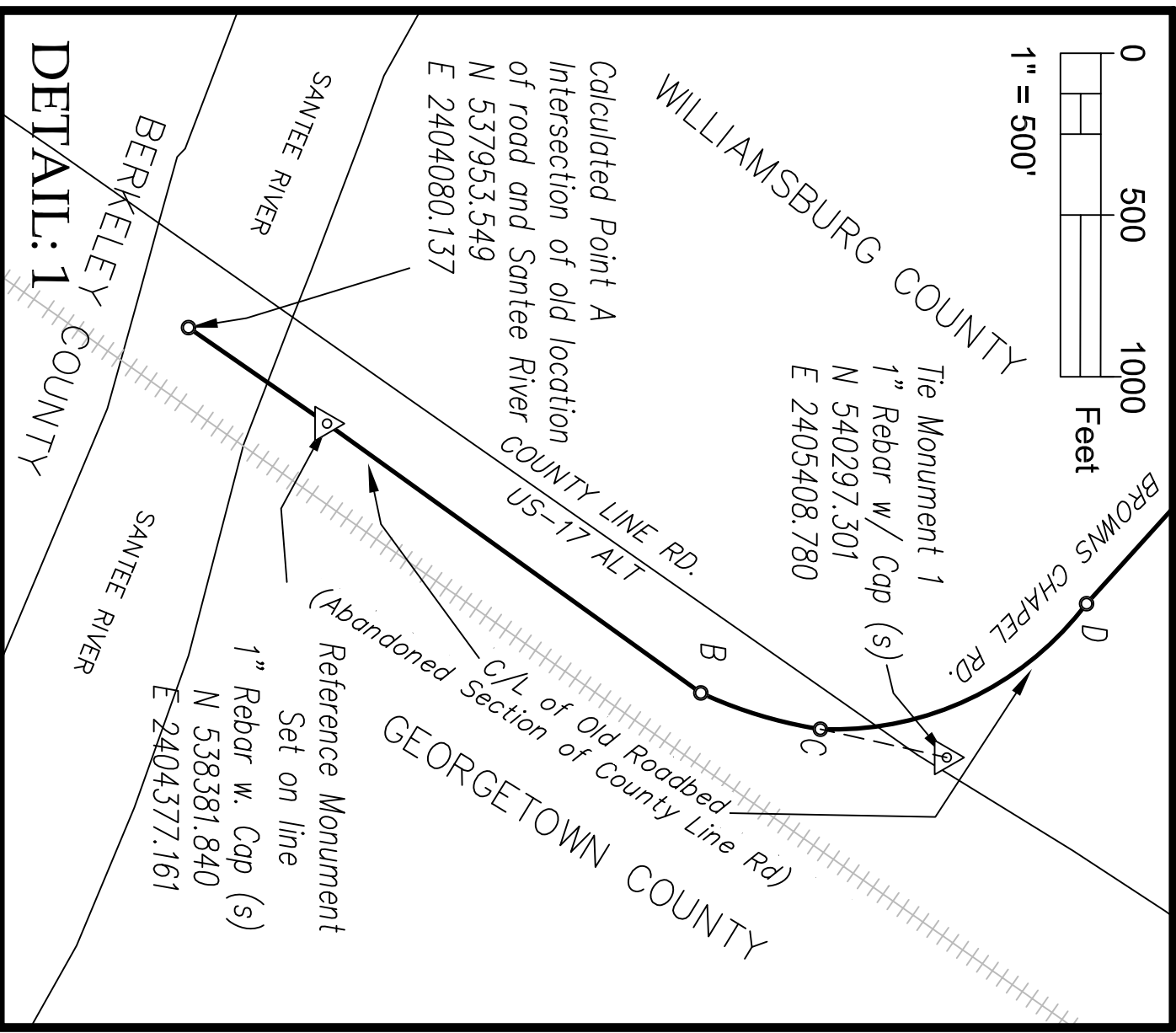
5) Williamsburg Plat Slide 1270 Page 2B

Plat prepared for William Gregory Jayroe Jr., Williamsburg County, showing property corners found along Old County Line Road (Abandoned). Surveyed by Edward A. Bodiford, PLS # 7896, May 4, 2018.

6) Williamsburg Plat Book 35 Page 23

Plat prepared for Harry L. Crooks, Williamsburg County, showing property corners set along Old County Line Road . Surveyed by Edward A. Bodiford, PLS # 7895, July 28, 1984.



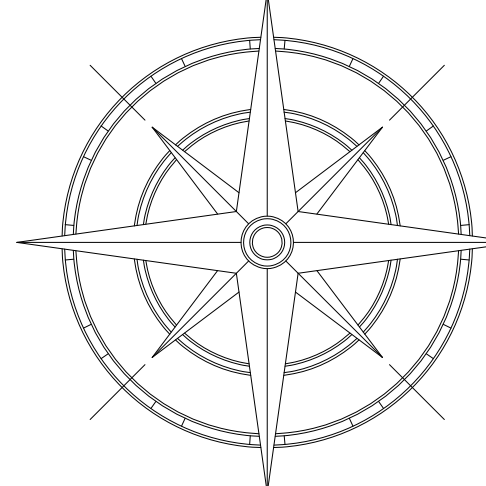


LEGEND
Monument
Calculated Point

DETAILS SHOWING ABANDONED ROADBED SECTIONS DEVIATING FROM CURRENT ROAD

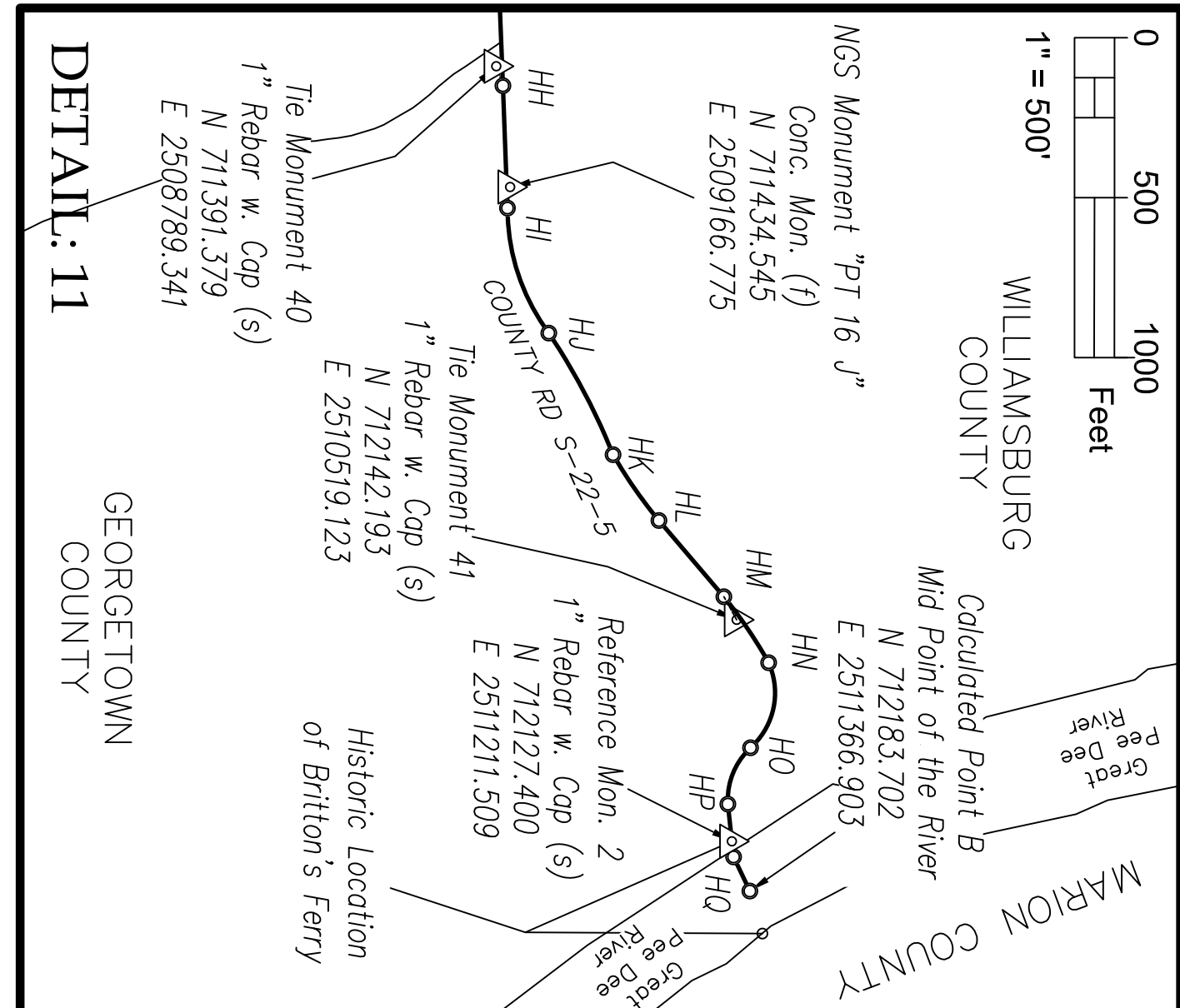
RE-ESTABLISHMENT OF THE COMMON BOUNDARY OF  
GEORGETOWN AND WILLIAMSBURG COUNTIES

Preliminary Draft

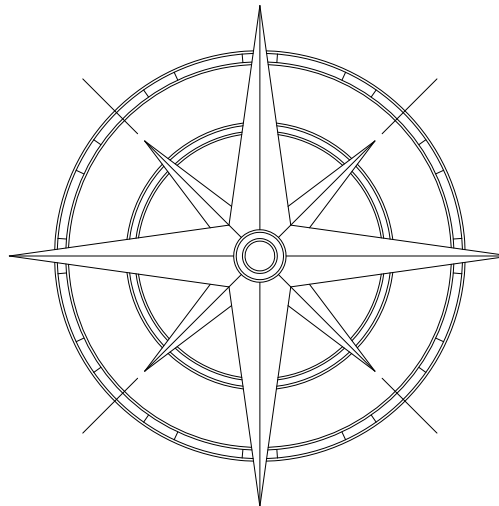


FIELD WORK AND MAP BY  
SOUTH CAROLINA GEODETIC SURVEY  
1000 ASSEMBLY ST., 4TH FLOOR  
COLUMBIA, SC 29201  
803.734.3793  
<http://rta.sc.gov/geodetic>

Date: October, 14 2024  
\*Date Reflects Final Day of Field Work







N  
S.C. Grid 83/2011

RE-ESTABLISHMENT OF THE COMMON BOUNDARY OF  
GEORGETOWN AND WILLAMSBURG COUNTIES

FIELD WORK AND MAP BY  
SOUTH CAROLINA GEODETIC SURVEY  
1000 ASSEMBLY ST., 4TH FLOOR  
COLUMBIA, SC 29201  
803.734.3793

http://rta.sc.gov/geodetic

I hereby state that to the best of my professional knowledge, information, and belief, the survey shown hereon was made in accordance with the requirements of the South Carolina Geodetic Surveying in South Carolina, and meets or exceeds the requirements for a Class B survey as specified therein.

Date: *October, 14 2024*  
Date Reflects Final Day of Field Work

Preliminary Draft

LEGEND	
TM—	Tie Monument
RM—	Reference Monument
CB Mon.—	County Boundary Monument
NGS—	National Geodetic Survey
(f)—	Found
(s)—	Set
Calc. Pt.—	Calculated Point

NOTES:  
1) The Northing and Easting coordinates for the NGS Monuments shown in the point table above were derived from field observations. Reference their NGS datums for their published coordinates. (https://geodesy.noaa.gov/geotools/)

	Point #	Nothing	Easting	Description
Calc. Point A	537953.55	240400.14		
	Reference Mon. 1	538391.84	240437.16	
TM Mon. 1	540297.30	240404.78		
TM Mon. 2	548927.35	240380.55		
TM Mon. 3	552896.89	240761.25		
TM Mon. 4	558991.84	240633.06		
NGS Mon. 045 035.42	558723.12	241308.75		
NGS Mon. 22 098	560838.45	241897.40		
TM Mon. 5	560838.45	241897.40		
NGS Mon. 022 027.42 AK	570181.69	242059.19		
TM Mon. 7	570181.69	242070.40		
NGS Mon. Below NGS	58027.78	242422.67		
TM Mon. 8	58027.78	242422.67		
NGS Mon. 45 108	58027.78	242422.67		
TM Mon. 9	58027.78	242422.67		
NGS Mon. 45 108.42	58027.78	242422.67		
TM Mon. 10	58027.78	242422.67		
NGS Mon. 45 108.42	58027.78	242422.67		
TM Mon. 11	58027.78	242422.67		
NGS Mon. 45 108.42	58027.78	242422.67		
TM Mon. 12	58027.78	242422.67		
NGS Mon. 45 108.42	58027.78	242422.67		
TM Mon. 13	58027.78	242422.67		
NGS Mon. 45 108.42	58027.78	242422.67		
TM Mon. 14	58027.78	242422.67		
NGS Mon. 45 108.42	58027.78	242422.67		
TM Mon. 15	58027.78	242422.67		
NGS Mon. 45 123	58027.78	242422.67		
TM Mon. 17	58027.78	242422.67		
TM Mon. 18	58027.78	242422.67		
CG Mon. CW (C70)	58027.78	242422.67		
NGS Mon. 45 122	58027.78	242422.67		
CG Mon. CX (6p)	58027.78	242422.67		
CG Mon. CX (6p)	58027.78	242422.67		
CG Mon. DD (AXE)	58027.78	242422.67		
CG Mon. DF (9p)	58027.78	242422.67		
CG Mon. OH (9p)	58027.78	242422.67		
TM Mon. 21	58027.78	242422.67		
TM Mon. 21	58027.78	242422.67		
TM Mon. 23	58027.78	242422.67		
NGS Mon. 22 210	58027.78	242422.67		
NGS Mon. 45 078.42 AK	58027.78	242422.67		
NGS Mon. 045 018	58027.78	242422.67		
NGS Mon. 45 117	58027.78	242422.67		
TM Mon. 24	58027.78	242422.67		
TM Mon. 24	58027.78	242422.67		
TM Mon. 25	58027.78	242422.67		
TM Mon. 26	58027.78	242422.67		
TM Mon. 27	58027.78	242422.67		
TM Mon. 28	58027.78	242422.67		
TM Mon. 29	58027.78	242422.67		
TM Mon. 30	58027.78	242422.67		
TM Mon. 31	58027.78	242422.67		
TM Mon. 32	58027.78	242422.67		
TM Mon. 33	58027.78	242422.67		
TM Mon. 34	58027.78	242422.67		
TM Mon. 35	58027.78	242422.67		
TM Mon. 36	58027.78	242422.67		
TM Mon. 37	58027.78	242422.67		
TM Mon. 38	58027.78	242422.67		
TM Mon. 39	58027.78	242422.67		
TM Mon. 40	58027.78	242422.67		
NGS Mon. PT 16 J	58027.78	242422.67		
TM Mon. 41	58027.78	242422.67		
Ref. Mon. 1	58027.78	242422.67		
Calc. Point B	58027.78	242422.67		