

Maped by the Army Map Service
Published for civil use by the Geological Survey
Control by USC&GS
Topography by photogrammetric methods from aerial photographs
taken 1942 and planetable surveys 1943
Polyconic projection, 1927 North American datum
10,000-foot grid based on South Carolina coordinate system,
south zone
1000-meter Universal Transverse Mercator grid ticks,
zone 17, shown in blue

TRUE NORTH
MAGNETIC NORTH
APPROXIMATE MEAN
DECLINATION, 1943

SCALE 1:24 000
1 000 0 1000 2000 3000 4000 5000 6000 7000 FEET
1 KILOMETER
CONTOUR INTERVAL 20 FEET
DATUM IS MEAN SEA LEVEL

THIS MAP COMPLIES WITH NATIONAL MAP ACCURACY STANDARDS
FOR SALE BY U.S. GEOLOGICAL SURVEY, WASHINGTON 25, D. C.
A FOLDER DESCRIBING TOPOGRAPHIC MAPS AND SYMBOLS IS AVAILABLE ON REQUEST

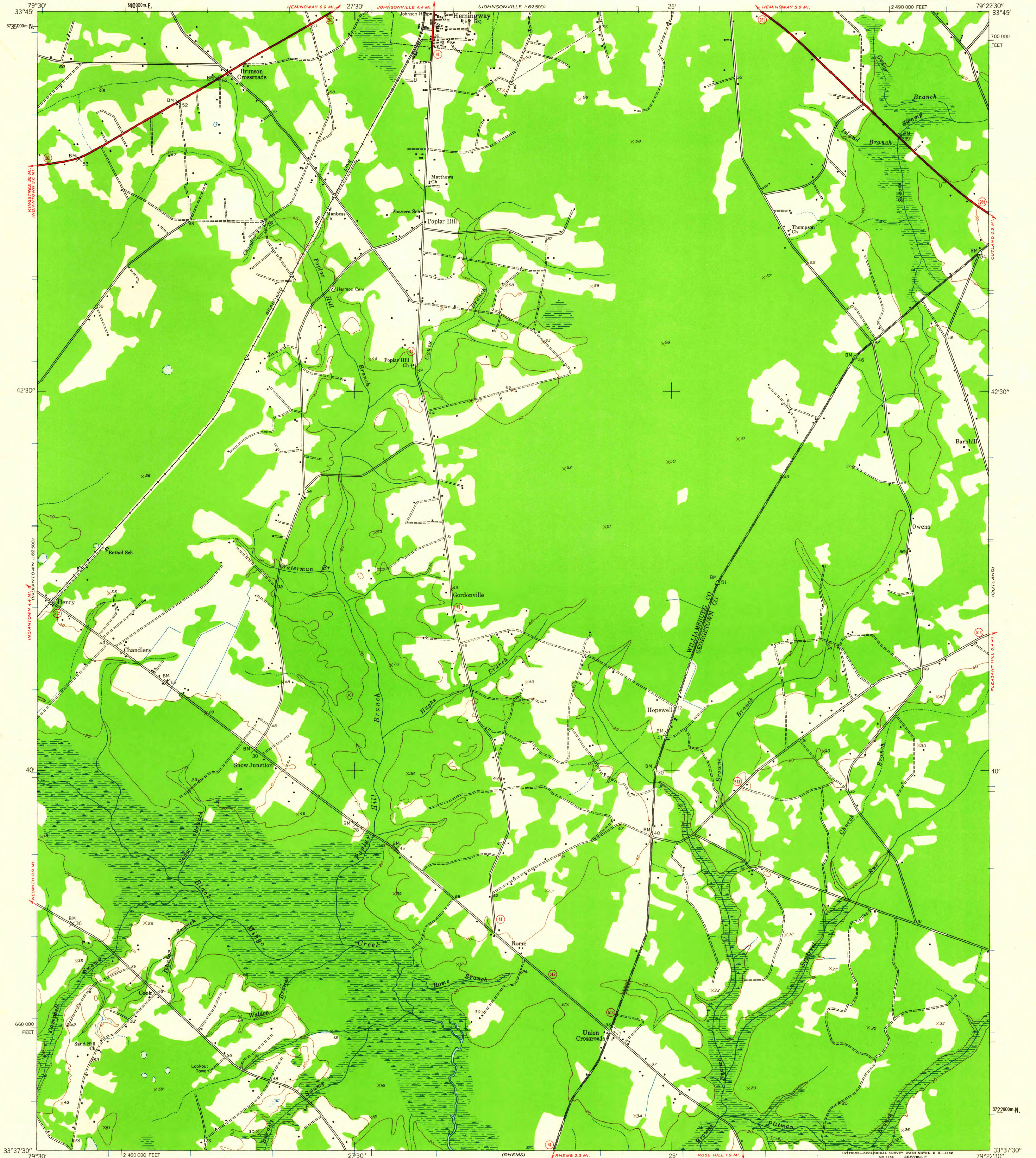


ROAD CLASSIFICATION
Heavy-duty ——— Light-duty ———
Medium-duty ——— Unimproved dirt ———
U. S. Route ——— State Route ———

U.S.G.S.
FILE COPY
TOPOGRAPHIC DIVISION
ANDREWS, S. C.
N3322.5-W7930/7.5
1943

DCI - 4 1962

1920



Map by the Army Map Service
Published for civil use by the Geological Survey
Control by USC&GS

Topography by photogrammetric methods from aerial photographs
taken 1942 and planetable surveys 1943
Polyconic projection. 1927 North American datum
10,000-foot grid based on South Carolina coordinate system,
south zone
1000-meter Universal Transverse Mercator grid ticks,
zone 17, shown in blue

TRUE NORTH
MAGNETIC NORTH
APPROXIMATE MEAN
DECLINATION, 1943

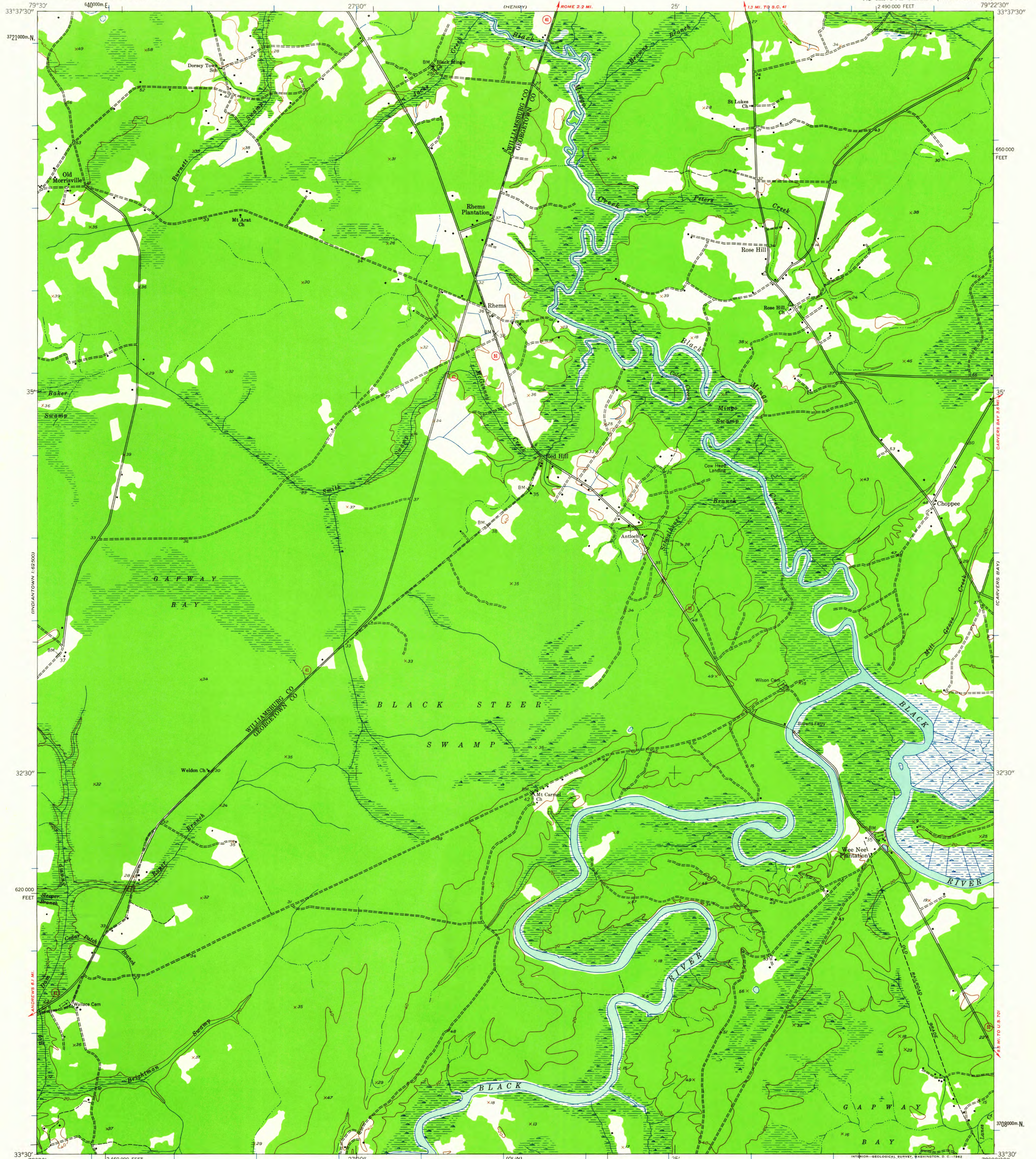
SCALE 1:24 000
1 0000 0 1000 2000 3000 4000 5000 6000 7000 FEET
1 5 10 KILOMETER
CONTOUR INTERVAL 20 FEET
DATUM IS MEAN SEA LEVEL

ROAD CLASSIFICATION
Heavy-duty ——— Light-duty ———
Unimproved dirt ———
State Route —○—



THIS MAP COMPLIES WITH NATIONAL MAP ACCURACY STANDARDS
FOR SALE BY U. S. GEOLOGICAL SURVEY, WASHINGTON 25, D. C.
A FOLDER DESCRIBING TOPOGRAPHIC MAPS AND SYMBOLS IS AVAILABLE ON REQUEST

HENRY, S. C.
N3337.5—W7922.5/7.5
1943



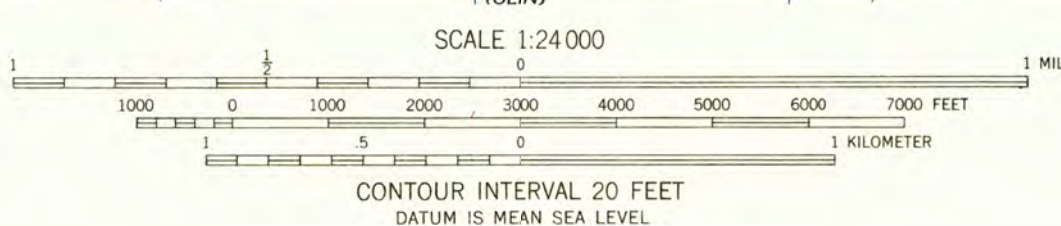
Map by the Army Map Service
Published for civil use by the Geological Survey
Control by USC&GS

Topography by photogrammetric methods from aerial photographs
taken 1942 and planetable surveys 1943

Polyconic projection, 1927 North American datum
10,000-foot grid based on South Carolina coordinate system,
south zone

1000-meter Universal Transverse Mercator grid ticks,
zone 17, shown in blue

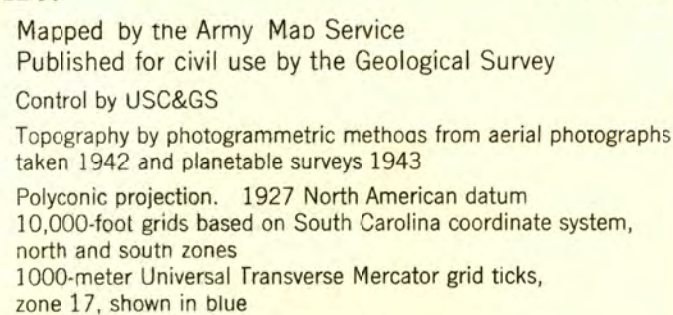
TRUE NORTH
MAGNETIC NORTH
APPROXIMATE MEAN
DECLINATION, 1943



ROAD CLASSIFICATION
Light-duty ————— Unimproved dirt —————
State Route

USGS
HISTORICAL FILE
TOPOGRAPHIC DIVISION

RHEMS, S. C.
N3330-W7922.5/7.5
1943
DEC 12 1962
2250



APPROXIMATE MEAN
DECLINATION, 1943

THIS MAP COMPLIES WITH NATIONAL MAP ACCURACY STANDARDS
FOR SALE BY U. S. GEOLOGICAL SURVEY, WASHINGTON 25, D. C.
A FOLDER DESCRIBING TOPOGRAPHIC MAPS AND SYMBOLS IS AVAILABLE ON REQUEST

USGS
HISTORICAL FILE
TOPOGRAPHIC DIVISION

S. C.

QUADRANGLE LOCATION

[illegible]

U.S.S.S. OUTLAND, S. C.
N3337.5—W7915/7.5
1943

DEC 12 1962

243C

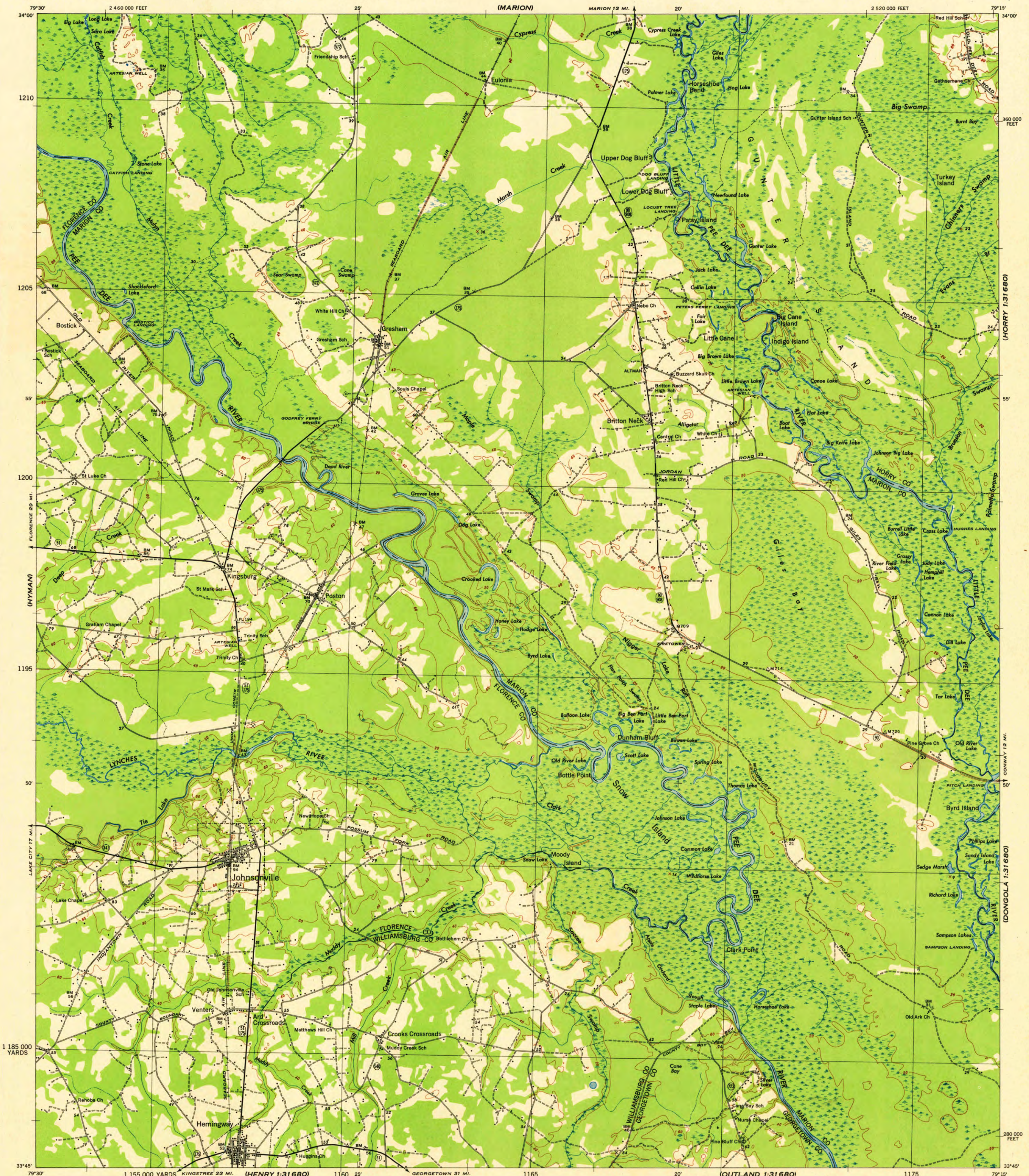
FLORENCE

SOUTH CAROLINA
SCALE 1:62,500

WAR DEPARTMENT
CORPS OF ENGINEERS, U. S. ARMY

JOHNSONVILLE QUADRANGLE
15-MINUTE SERIES

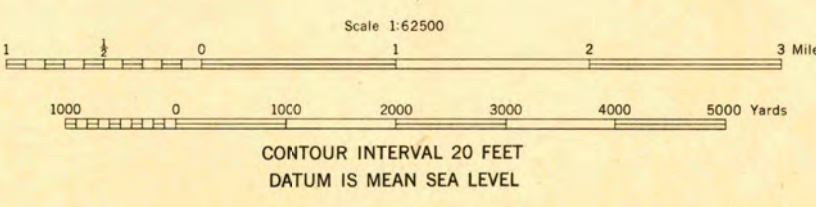
NICHOLS



Map by Tennessee Valley Authority under direction of the
Chief of Engineers, U. S. Army, 1943.
Control by USCGS, USGS, USGS, USGS and TVA.
Topography by TVA plane-table surveys.
Culture and drainage base by multiplex.
Wide-angle photography by TVA, 1943.
Polyconic projection. 1927 North American datum.

ROAD CLASSIFICATION
1943
Dependable hard-surface, heavy-duty road. U. S. Route 709
Loose-surface graded, dry weather road.
Secondary, hard-surface, all-weather road.
Dirt road. State Route 51
More than two lanes indicated by note along road with tick at point of change. 3 LANE 1/4 LANE

THIS MAP COMPLEIES WITH THE NATIONAL STANDARD MAP ACCURACY REQUIREMENTS.



JOHNSONVILLE, S. C.
N3345-W7915/15
EDITION OF 1948