

FED. ROAD DIV. NO.	STATE	COUNTY	PROJECT NO.	F. A. PROJ. NO.	ROAD NO.	SHEET NO.	TOTAL SHEETS
3	S. C.	Saluda	41.370	C-370	S-154	1	15

INDEX OF SHEETS

- Sheet No. 1 Title Sheet
- " 1A Moving Items and Reset Fences
- " 2 Typical Section
- " 3 Intersection Std.
- " 4 Superelevation Std.
- " 5-7 Plan and Profile
- " 8 Bridge Std.
- " 9-15 Cross Sections

SOUTH CAROLINA
STATE HIGHWAY DEPARTMENT
COLUMBIA

PLAN AND PROFILE OF PROPOSED
STATE HIGHWAY

FILE No. 41.370 S. P. No. C-370

ROAD S-154

FROM: U.S. Rte. 178 SOUTHWESTERLY APPROX. 1.25 MI.

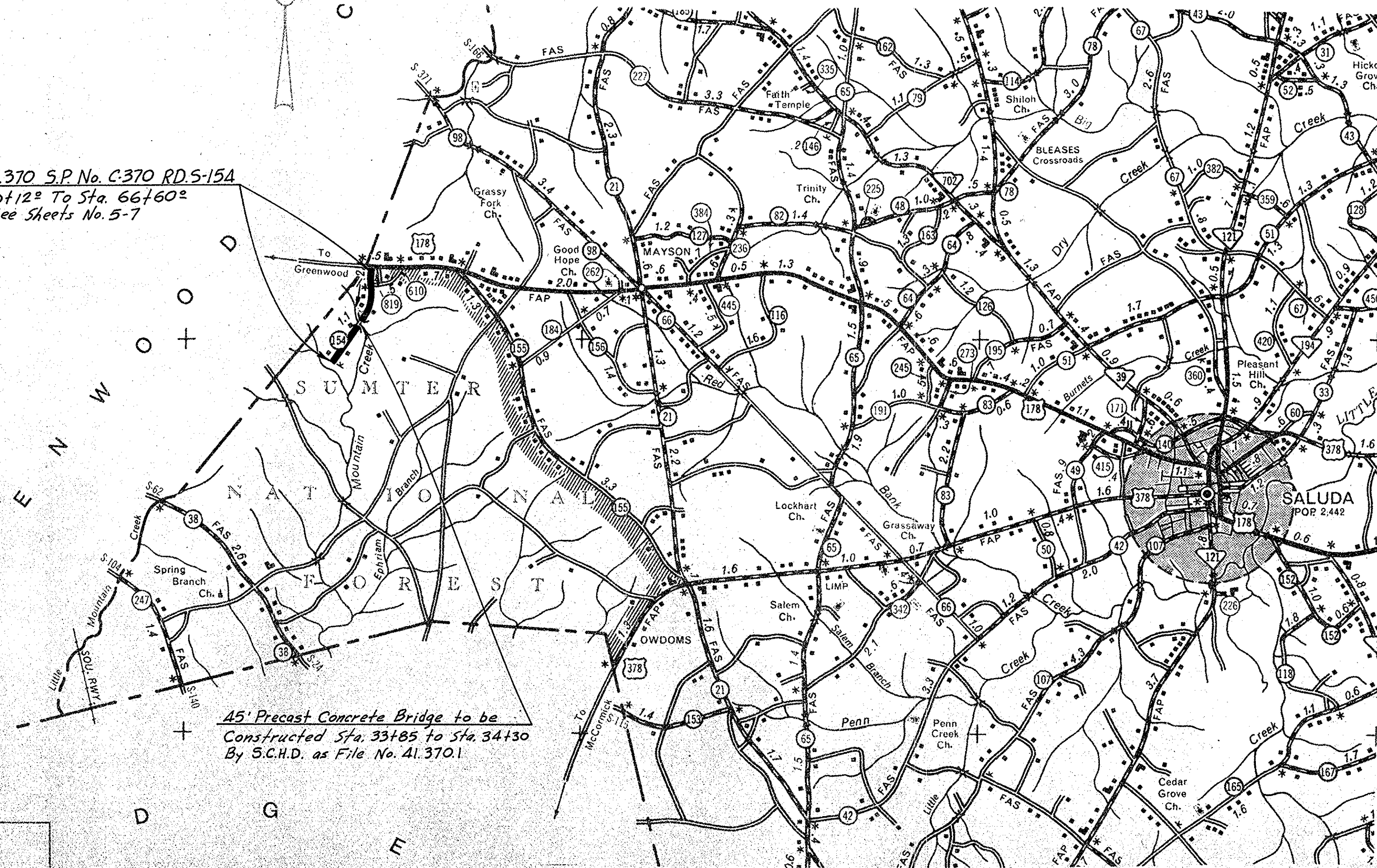
SALUDA COUNTY

SCALE: PLAN AND PROFILE 1 INCH = 100 FEET HORIZONTAL; 1 INCH = 10 FEET VERTICAL.

SUMMARY OF ESTIMATED QUANTITIES

DESCRIPTION	Quantity	Unit
EARTHWORK		
Clearing and Grubbing within Roadway	10	Acres
Clearing and Grubbing of Borrow and Material Pits	9,806	C.Y.
Unclassified Excavation	4,050	C.Y.H.M.
Overhaul	675	C.Y.
Selected Material for Shoulders		
BASE COURSE		
Stabilizer Aggregate (No. 2-A Aggregate)	3,181	Tons
SURFACING		
Bituminous Surfacing (Double Treatment) Types 1 or 2	14,973	S.Y.
STRUCTURES		
15" R.C. Culvert Pipe (Class III)	140	L.F.
18" R.C. Culvert Pipe (Class III)	248	L.F.
36" R.C. Culvert Pipe (Class III)	48	L.F.
INCIDENTALS		
4" Tile Underdrain	250	L.F.
See Sheet 1A for Moving Items and Reset Fences		

File No. 41.370 S.P. No. C-370 R.D.S-154
Sta. 0+12⁰⁰ To Sta. 66+60⁰⁰
See Sheets No. 5-7



Scale: 1 in. = 5,280 ft.

Net Length of Roadway	1.250	Miles
Net Length of Bridges	0.009	Miles
Net Length of Project	1.259	Miles
Length of Exceptions		Miles
Gross Length of Project	1.259	Miles

Equalities in Stationing None

LEGEND

PROPOSED PROJECT

OTHER ROADS

CONVENTIONAL SIGNS

Slate Line	Trolley Poles	
County Line	Power Poles	
City or Town Limits	Telephone or Telegraph Poles	
Property Line	Marsh	
Fence	Trees	
Retaining Wall	Brush	
Existing Road	Stumps	
C and P.O.W. Lines of	Buildings	
Proposed Road	Bridge	
Railroad	Concrete Box Culvert	
Levee or Embankment	Pipe Culvert	
Guard Rail	Drop Inlet and Culvert	
Point of Intersection (P.I.)	Hub on Center Line	

RECOMMENDED BY:
R.B. Bond 3-26-73
Location ENGINEER DATE

SUBMITTED BY:
J.B. Taylor 3-28-73
ROAD PLANS ENGINEER DATE

APPROVED FOR _____ DATE _____

_____ MAYOR _____

_____ CLERK _____

COUNCILMEN

APPROVED:
J.M. ... 3-28-73
STATE HIGHWAY ENGINEER DATE

DEPARTMENT OF COMMERCE
BUREAU OF PUBLIC ROADS

APPROVED: _____ DATE _____

DISTRICT ENGINEER

APPROVED: _____ DATE _____

DIVISION ENGINEER

Note: All workmanship and material on this project to conform with South Carolina State Highway Department Standard Specifications for Highway Construction dated Nov. 1, 1964.

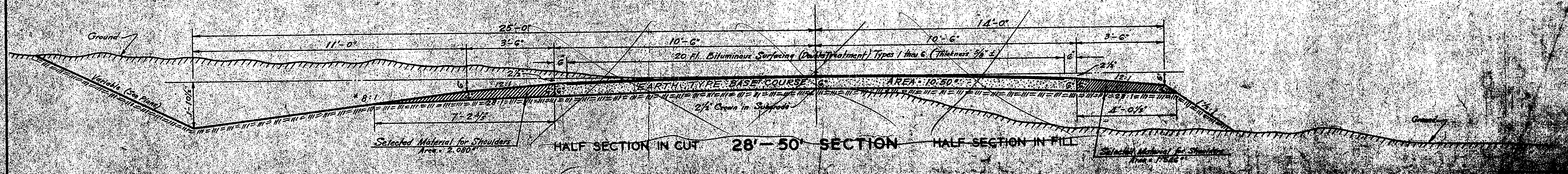
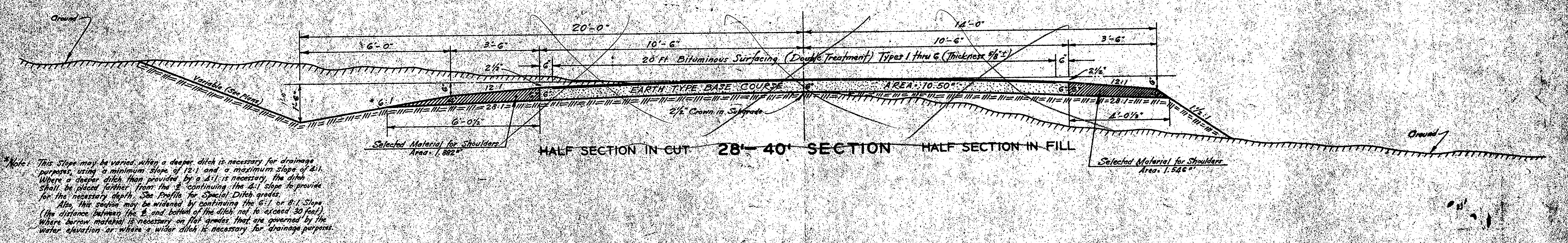
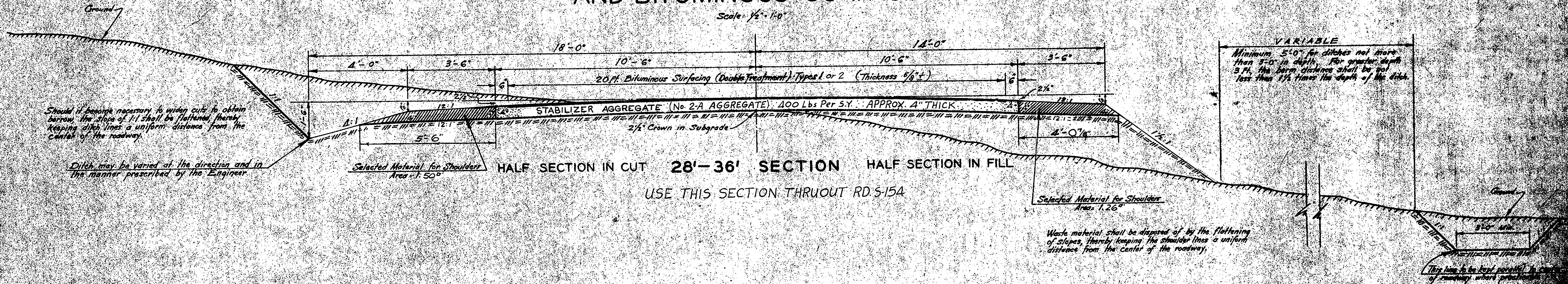
SQUAD # 5 H.O.T.

Dist. from Sta. No.	State	County	Docket No.	Road No.	Sheet No.	Total Sheets
5	S.C.	Saluda	A1370	S-154	2	15

TYPICAL SECTIONS

FOR
EARTH TYPE BASE COURSE
AND BITUMINOUS SURFACING

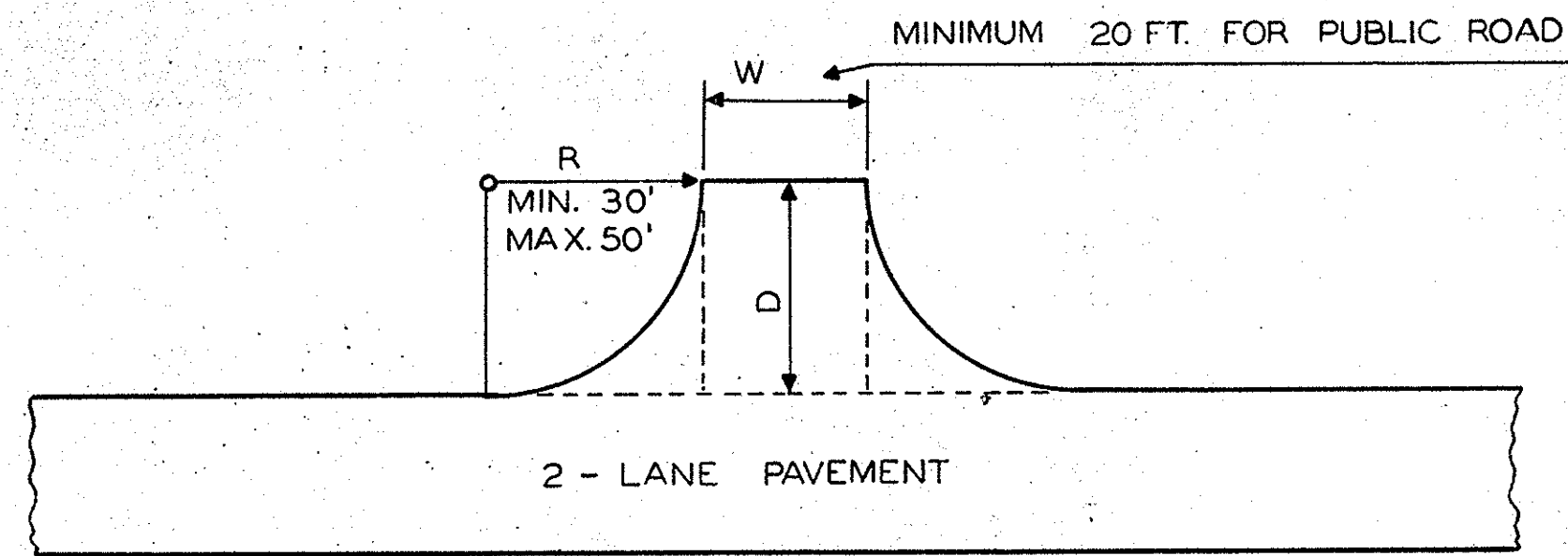
Scale: 1/2" = 1'-0"



FED. ROAD DIV. NO.	STATE	COUNTY	DOCKET NO.	PROJECT NO.	Road NO.	SHEET NO.	TOTAL SHEETS
3	S.C.	SALUDA	41.370	C-370	5-154	3	15

STANDARD TYPE INTERSECTIONS

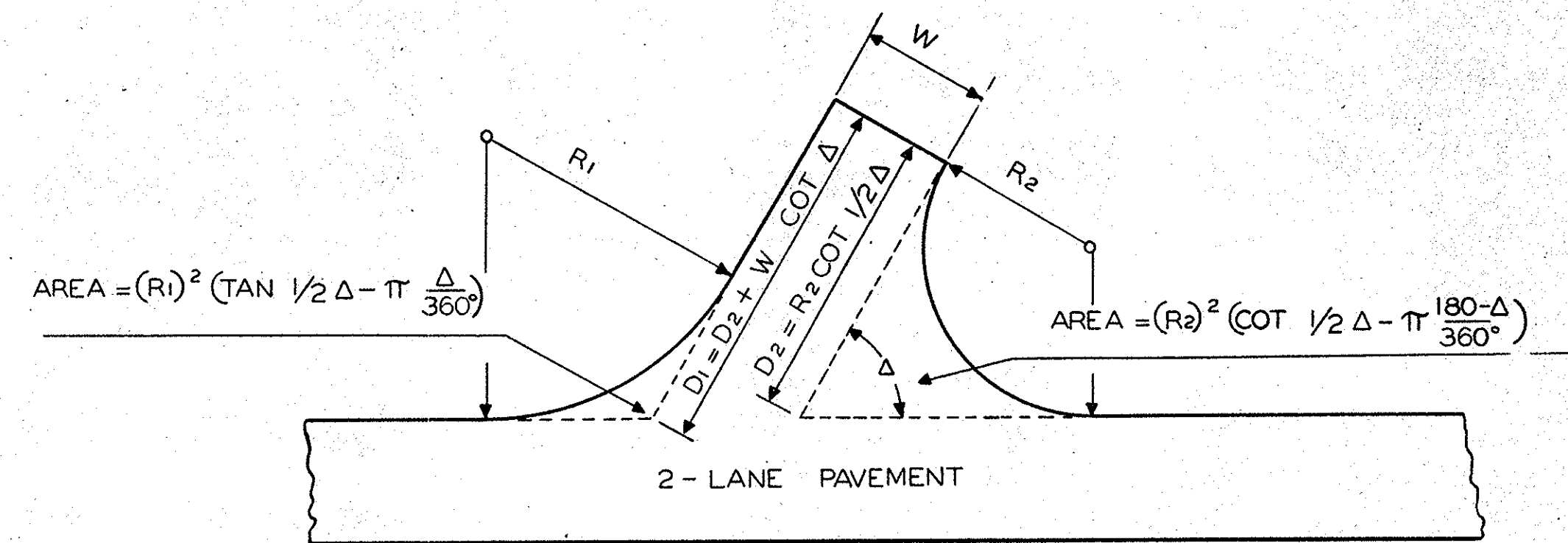
SCALE : 1" = 25'



T - TYPE INTERSECTION

FOR ANGLES AT OR NEAR 90°
AREA OF PAVED SPUR = $WD + 0.43 R^2$

FOR PRIVATE DRIVEWAYS TO BE PAVED,
USE THIS TYPE WITH 20' RADIUS AND 10'
WIDTH AT BACK. AREA FOR DRIVEWAY =
41.3 S.Y.



Y - TYPE INTERSECTION

ANGLE Δ	MAXIMUM			MINIMUM		
	R1 FEET	R2 FEET	AREA * SY.	R1 FEET	R2 FEET	AREA * SY.
90°	50	50	2 41.7	30	30	116.3
75°	80	50	3 54.3	50	25	145.1
60°	125	35	3 50.2	75	20	164.1
45°	200	25	3 55.9	100	15	170.2
# 30°	300	20	3 98.1	150	10	180.0

* THE AREAS GIVEN ARE FOR THE TOTAL AREA BEYOND THE EDGE OF THE PAVEMENT ON THE MAIN ROAD. WIDTH AT BACK OF INTERSECTION, W = 22 FT.

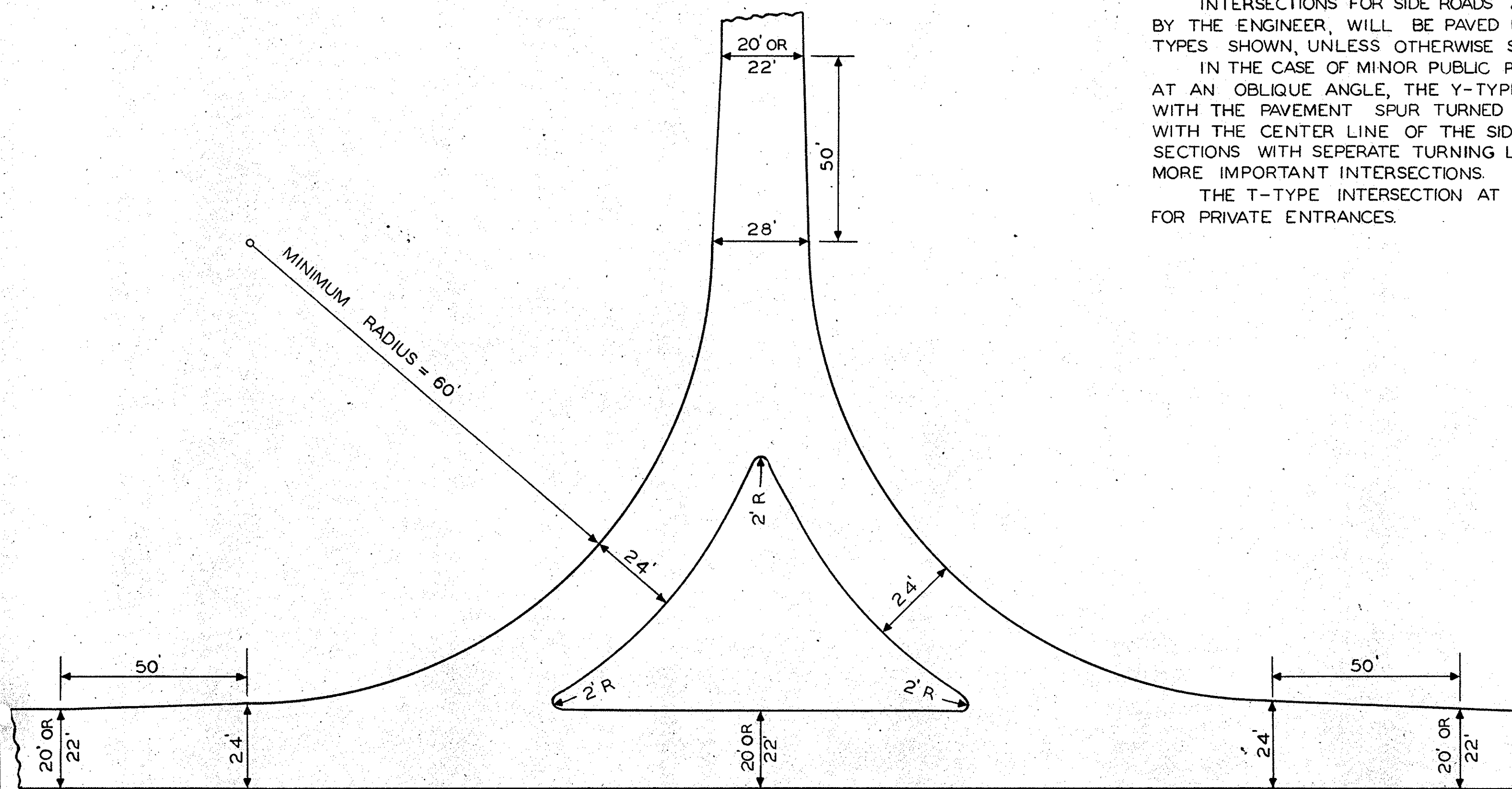
INTERSECTIONS AT LESS THAN 45° SHOULD BE CONSTRUCTED WITH SEPARATE TURNING LANES WHERE PRACTICAL AS SHOWN BY INTERSECTION TYPE BELOW.

GENERAL NOTES:

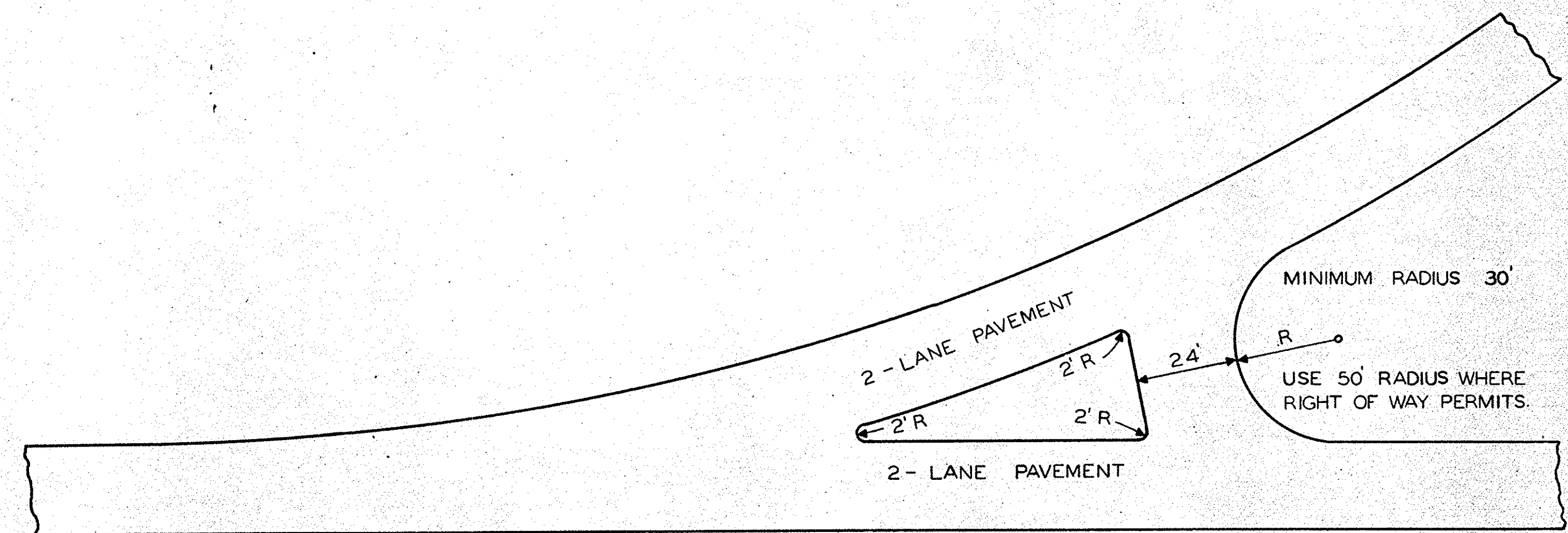
INTERSECTIONS FOR SIDE ROADS AND DRIVEWAYS WHERE DIRECTED BY THE ENGINEER, WILL BE PAVED USING ONE OF THE STANDARD TYPES SHOWN, UNLESS OTHERWISE SHOWN ON PLANS.

IN THE CASE OF MINOR PUBLIC ROADS INTERSECTING THE HIGHWAYS AT AN OBLIQUE ANGLE, THE Y-TYPE INTERSECTION SHOULD BE USED WITH THE PAVEMENT SPUR TURNED AT THE PROPER ANGLE TO LINE UP WITH THE CENTER LINE OF THE SIDE ROAD. T-TYPE OR Y-TYPE INTERSECTIONS WITH SEPARATE TURNING LANES SHOULD BE USED AT THE MORE IMPORTANT INTERSECTIONS.

THE T-TYPE INTERSECTION AT 90° SHOULD BE USED AT DRIVEWAYS FOR PRIVATE ENTRANCES.



T - TYPE INTERSECTION WITH SEPARATE TURNING LANES



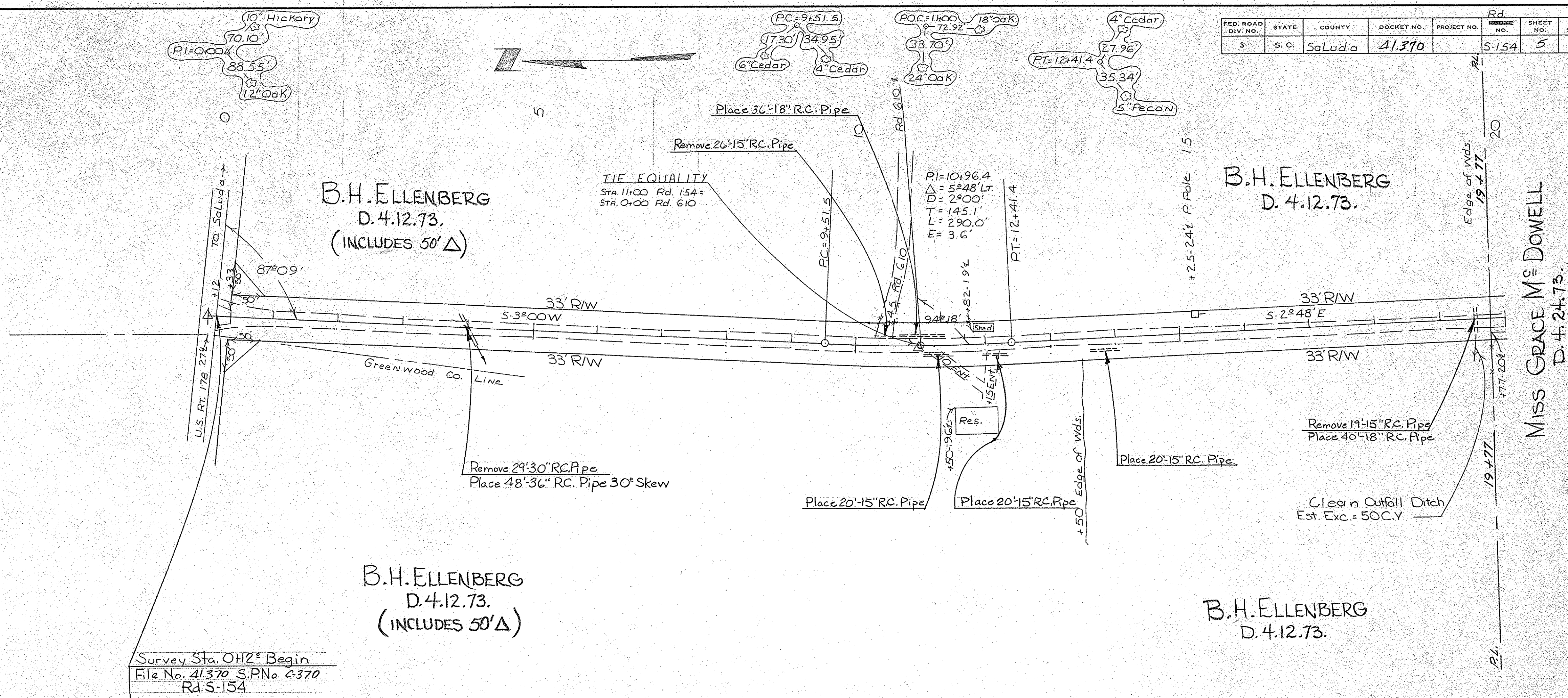
Y - TYPE INTERSECTION WITH SEPARATE TURNING LANE

DESIGNED BY GEO. C. SAWYER 11-17-45
DRAWN BY CARL W. METZ 11-19-45
RETRACED BY CONNIE WILLIS 11-22-57

FED. ROAD DIV. NO.	STATE	COUNTY	PROJECT NO.	Rd. SHEET NO.	TOTAL SHEETS
3	S. C.	Saluda	21370	5-154	5

DATE	BY
6/27/74	H.D. WALL
DATE	BY
	HOT

DATE	BY
6/27/74	L.T. JARRELL
DATE	BY



Note:
 Changes involving increased cost of project or changes in alignment must be specifically authorized by the State Highway Engineer. District Engineer may authorize minor alterations not in conflict with the Standard Practices of the Department and not involving increases in cost. Forward information on any change in alignment to the Columbia Office as soon as the revision is completed.
 All curves are to be super-elevated by revolving about centerline and for a design speed of 45 M.P.H. See Sheet no. A.
 The following quantities are not shown in detail on the plans but included in the Summary of Estimated Quantities and may be varied during construction as directed by the Engineer:

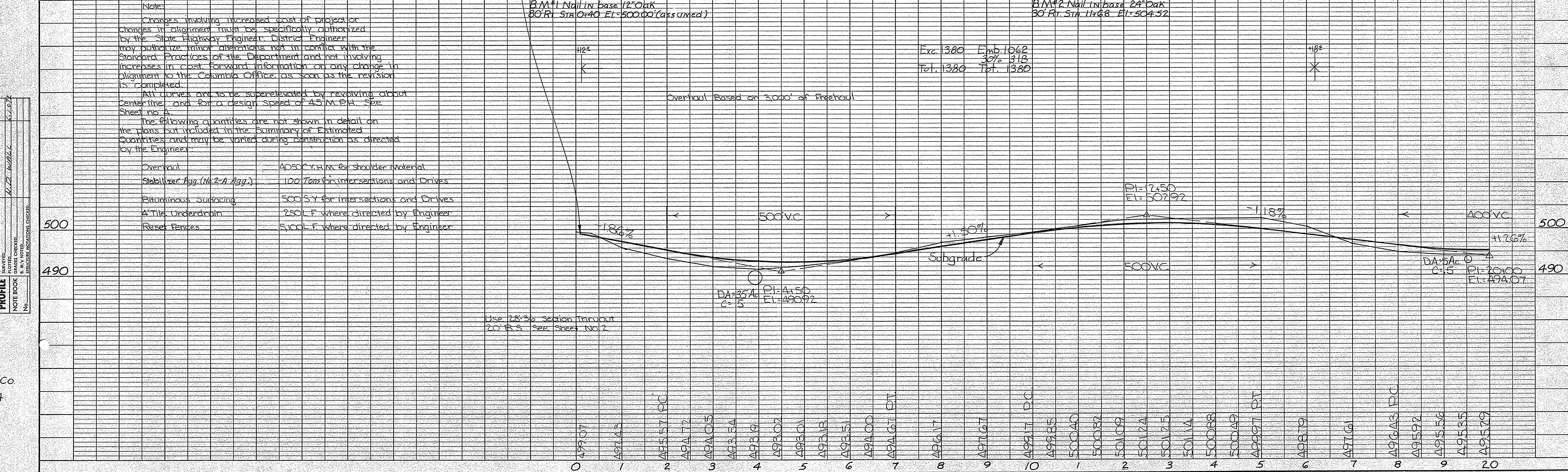
Overhaul	4050 CY/M for shoulder material
Stabilizer Agg. (No. 2-A Agg.)	100 Tons for intersections and Drives
Bituminous Surfacing	500 SY for intersections and Drives
A-Tile Underdrain	250 L.F. where directed by Engineer
Reset Fences	5100 L.F. where directed by Engineer

Survey Sta. OH2° Begin
 File No. 21370 S.P. No. 4370
 Rd S-154

B.M.#1 Nail in base 12" Oak
 30' R/L Sta. 0+40 El. 500.00 (assumed)

B.M.#2 Nail in base 24" Oak
 30' R/L Sta. 1+68 El. 504.52

Exc. 380 Emb. 1062
 Tot. 1380 Tot. 1380



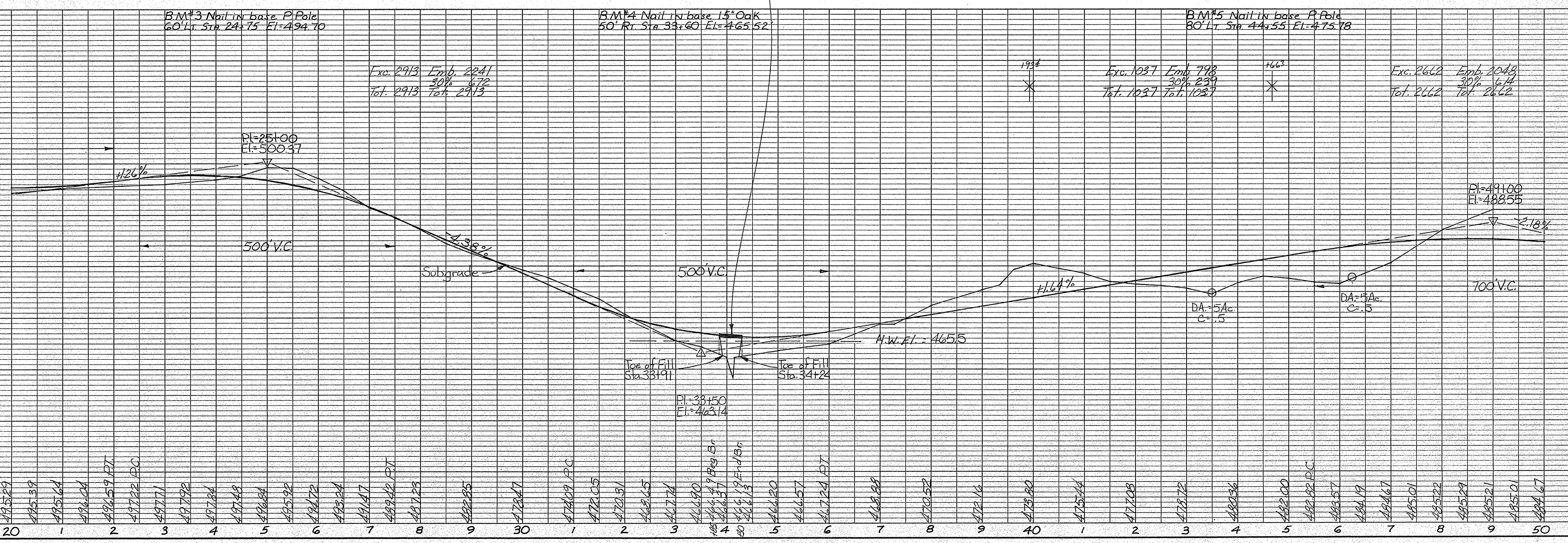
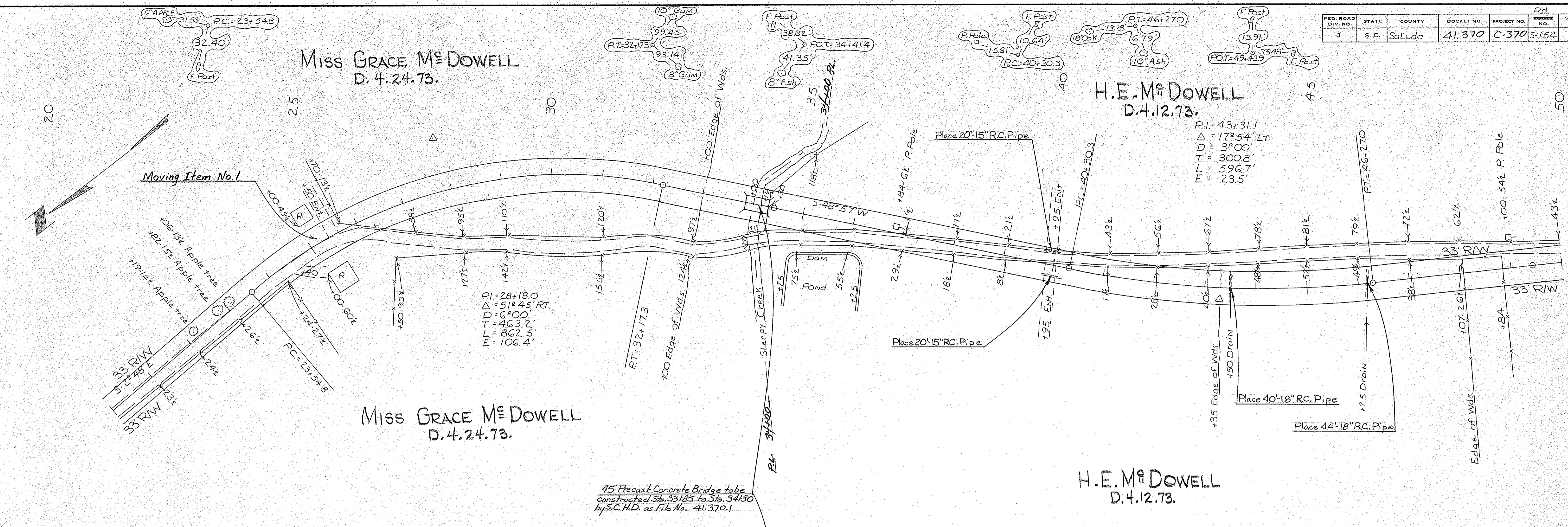
Use 28-36 section thruout
 20' B.S. See Sheet No. 2

Saluda Co
 Rd S-154

FED. ROAD DIV. NO.	STATE	COUNTY	PROJECT NO.	PROJECT NO.	RD. NUMBER NO.	SHEET NO.	TOTAL SHEETS
3	S. C.	Saluda	41.370	C-370	5-154	6	15

DATE	BY	NO.
6-15-73	H. D. DOWELL	
	H. O. T.	

DATE	BY	NO.
6-15-73	H. D. DOWELL	
	H. O. T.	



45' Precast Concrete Bridge to be constructed Sta. 33+18.5 to Sta. 34+30 by S.C.H.D. as File No. 41.370.1

B.M.#3 Nail in base P Pole
60' Lt. Sta. 24+75 El.=494.70

B.M.#4 Nail in base 1 1/2" Oak
50' Rt. Sta. 33+60 El.=465.52

B.M.#5 Nail in base P Pole
80' Lt. Sta. 44+55 El.=475.78

Exc. 2913 Emb. 2241
30% 6.72
Tot. 2913 Tot. 2913

Exc. 1037 Emb. 798
30% 239
Tot. 1037 Tot. 1037

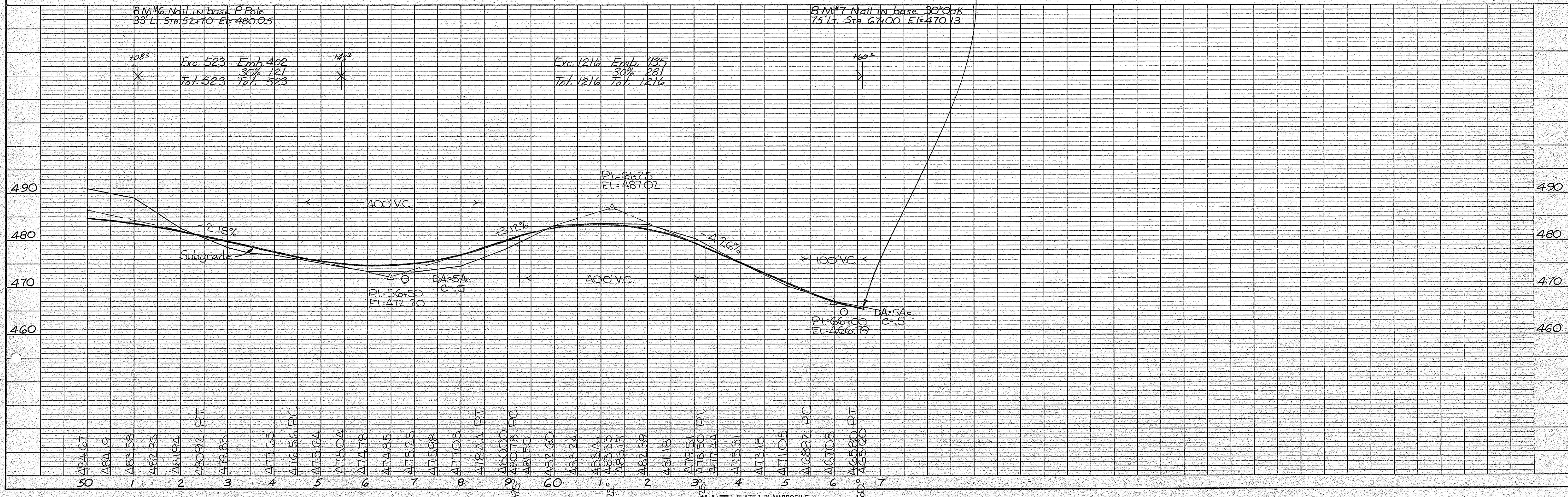
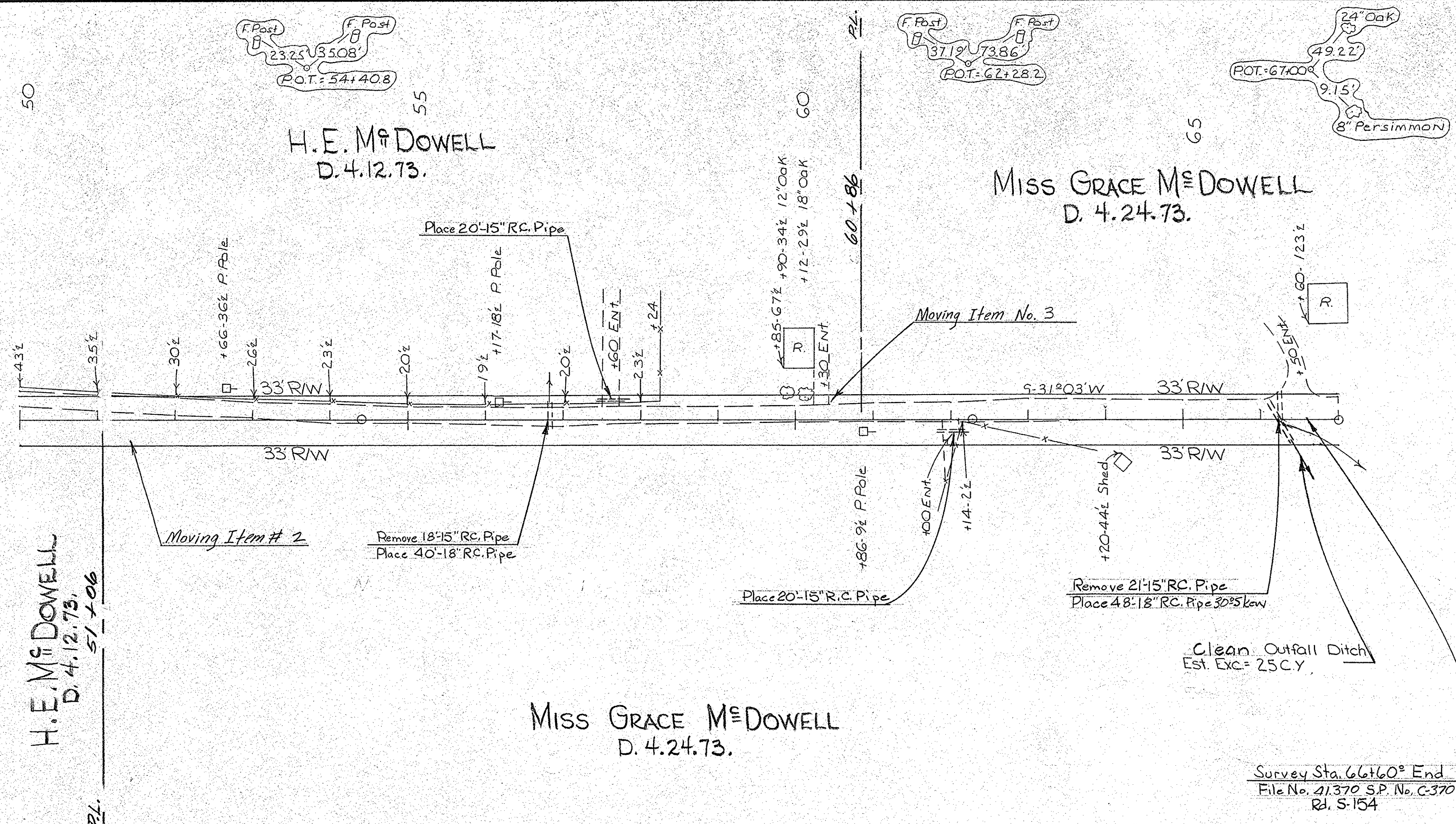
Exc. 2662 Emb. 1048
30% 6.14
Tot. 2662 Tot. 2662

Saluda Co.
Rd. 5-154

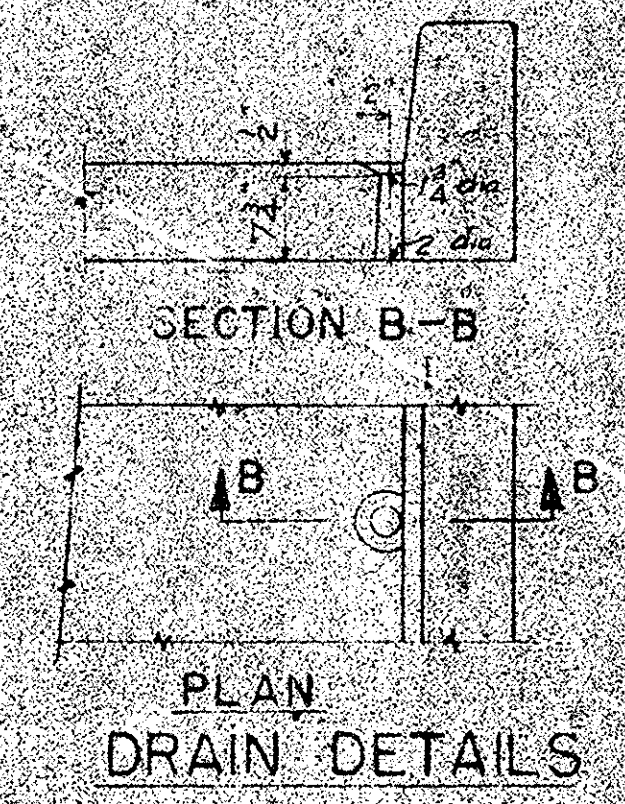
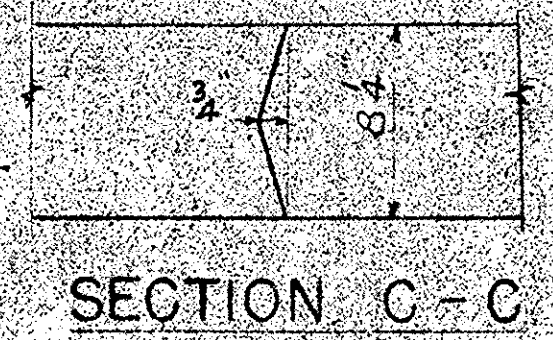
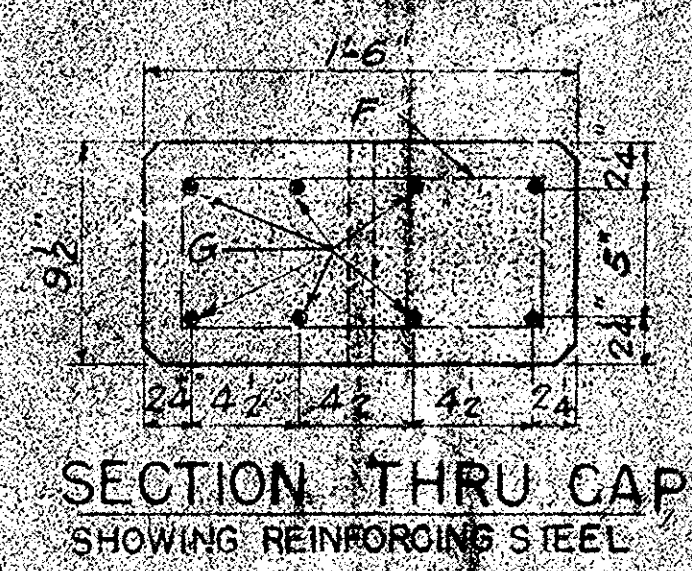
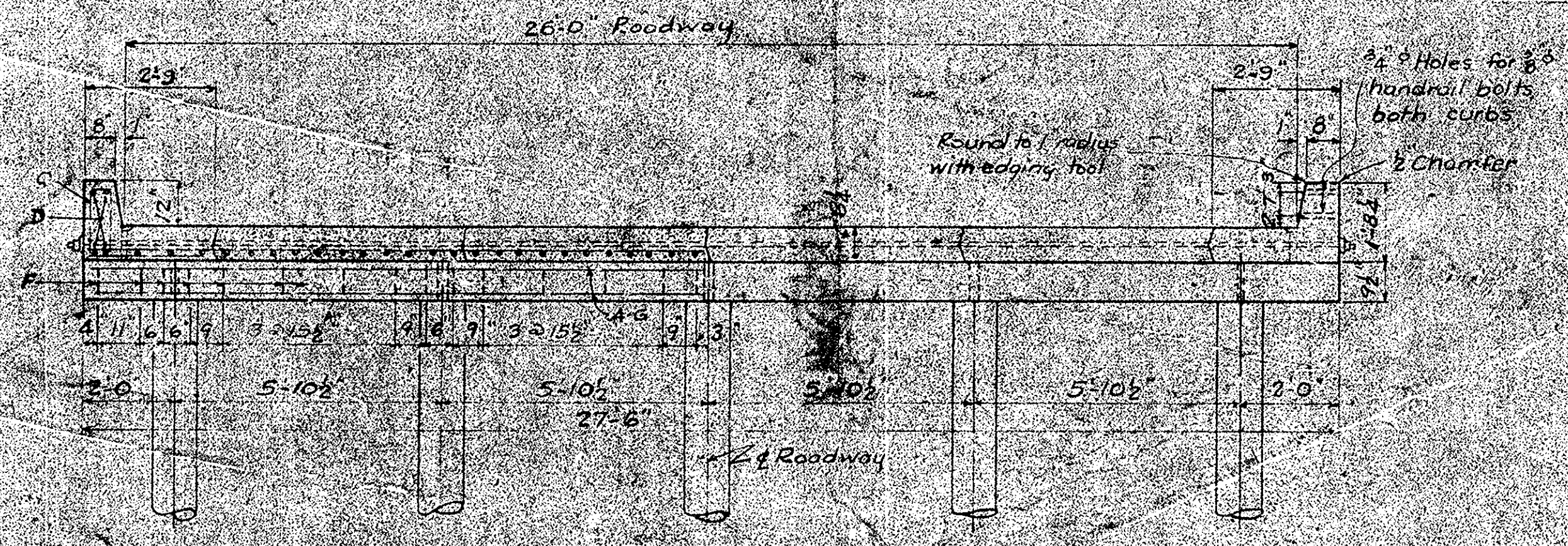
FED. ROAD DIV. NO.	STATE	COUNTY	BOCKET NO.	PROJECT NO.	Rd. SHEET NO.	TOTAL SHEETS
3	S. C.	Saluda	41.370	C.370	5-154	7

PLAN	DATE
NO. 1	6-1-73

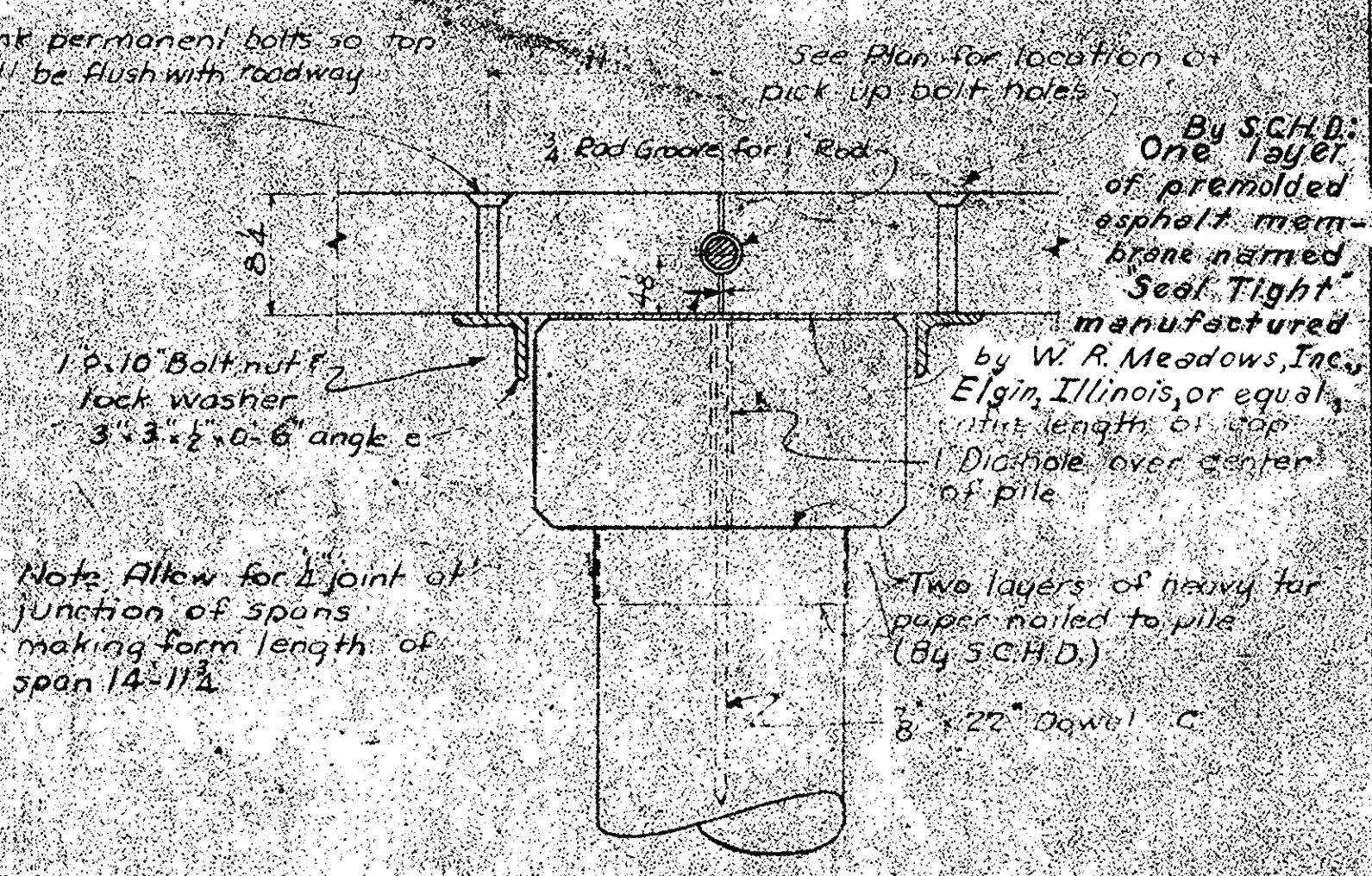
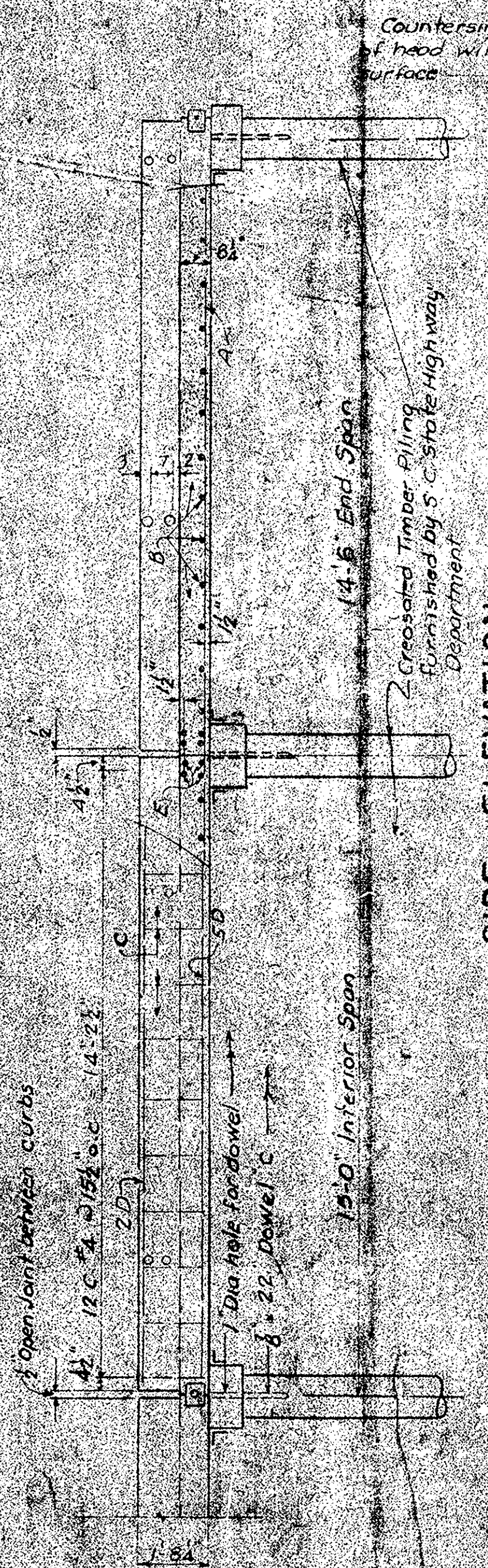
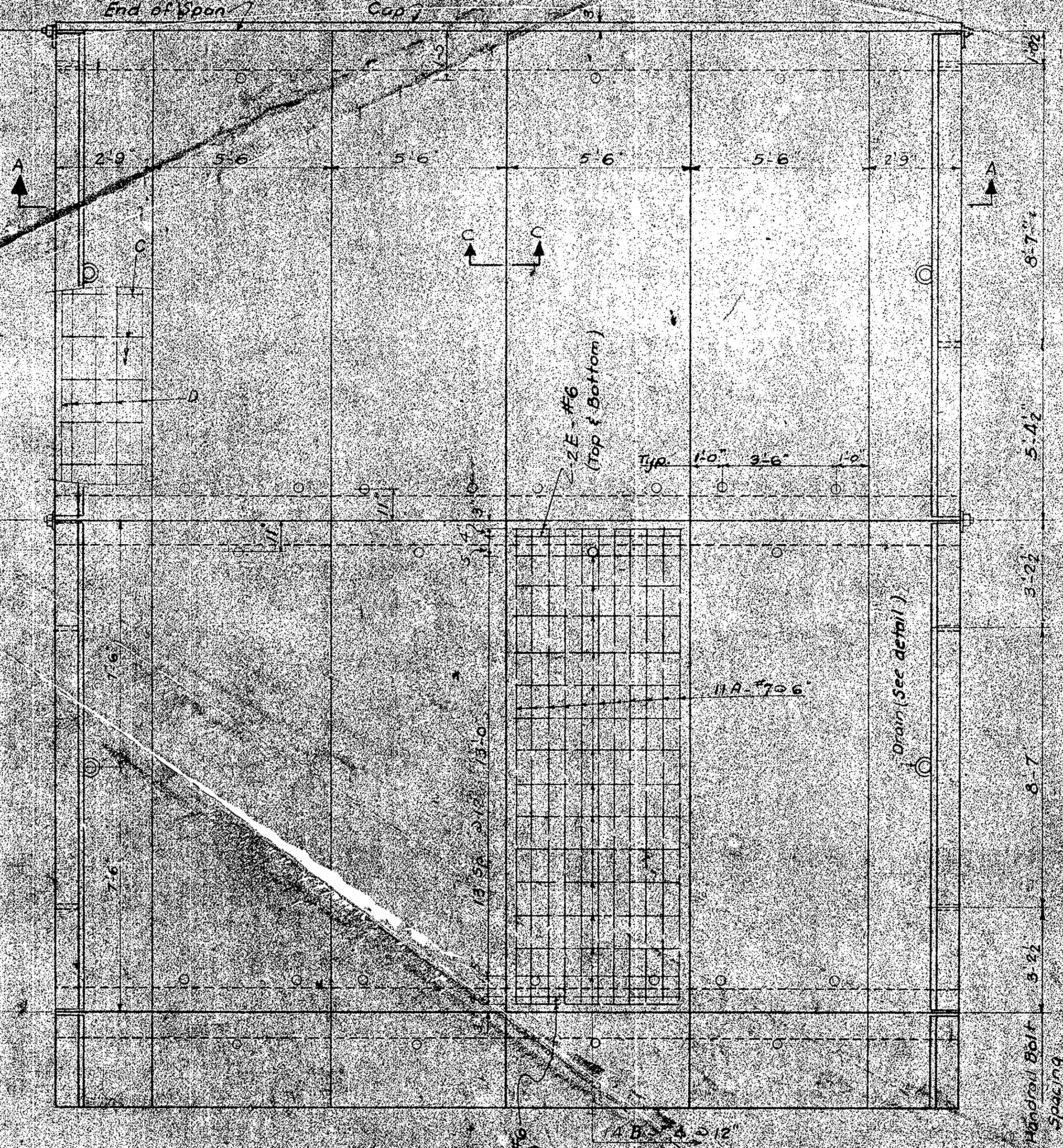
PROFILE	DATE
NO. 1	6-1-73



Saluda Co
Rd. S-154



REINFORCING STEEL SCHEDULE					
ONE SPAN 2156 LBS				BENDING DETAILS	
Mark	No. Reqd.	Size No.	Length	D	
A	11	7	11'-8"	5	
B	56	4	5'-2"	5	
C	24	4	5'-8"	B	
D	14	6	14'-6"	S	
E	32	6	5'-2"	S	
ONE BENT CAP 406 LBS					
F	30	4	4'-7"	B	
G	8	6	27'-0"	S	



HARDWARE & OTHER MATERIAL			
Mark	No.	Description	Detail
ONE INTERIOR BENT			
a	1	1 1/2" x 23-0 Tie Rod	3 Thread both ends
b	2	1 1/2" Nuts	1/2" lockwasher
c	5	8 x 6 x 6 P. Washers	8 P. Washers
d	2	8 x 6 x 6 P. Washers	Tie Rod
e	2	1 1/2" Lock Washers	1/2" lockwasher
ONE END BENT			
a	1	1 1/2" x 28-0 Tie Rod	1/2" hole centered
b	2	1 1/2" Nuts	8 P. Washer
c	2	8 x 6 x 6 P. Washer	1/2" hole centered
d	5	8 x 22 Dowels	Round tapered point
e	2	1 1/2" Lock Washers	Dowel C
f	4	8 x 6 Mach Bolts / Nuts	
g	4	8 Lock Washers	
ONE SPAN (INTERIOR OR END)			
a	4	1 1/2" x 10" Bolts / Nuts	1/2" hole
b	4	1 1/2" Lock Washers	1/2" hole
c	4	1 1/2" x 3 x 6 x 6	8 P. Washer
d	4	1 1/2" x 3 x 6 x 6	1/2" hole centered (one leg only)

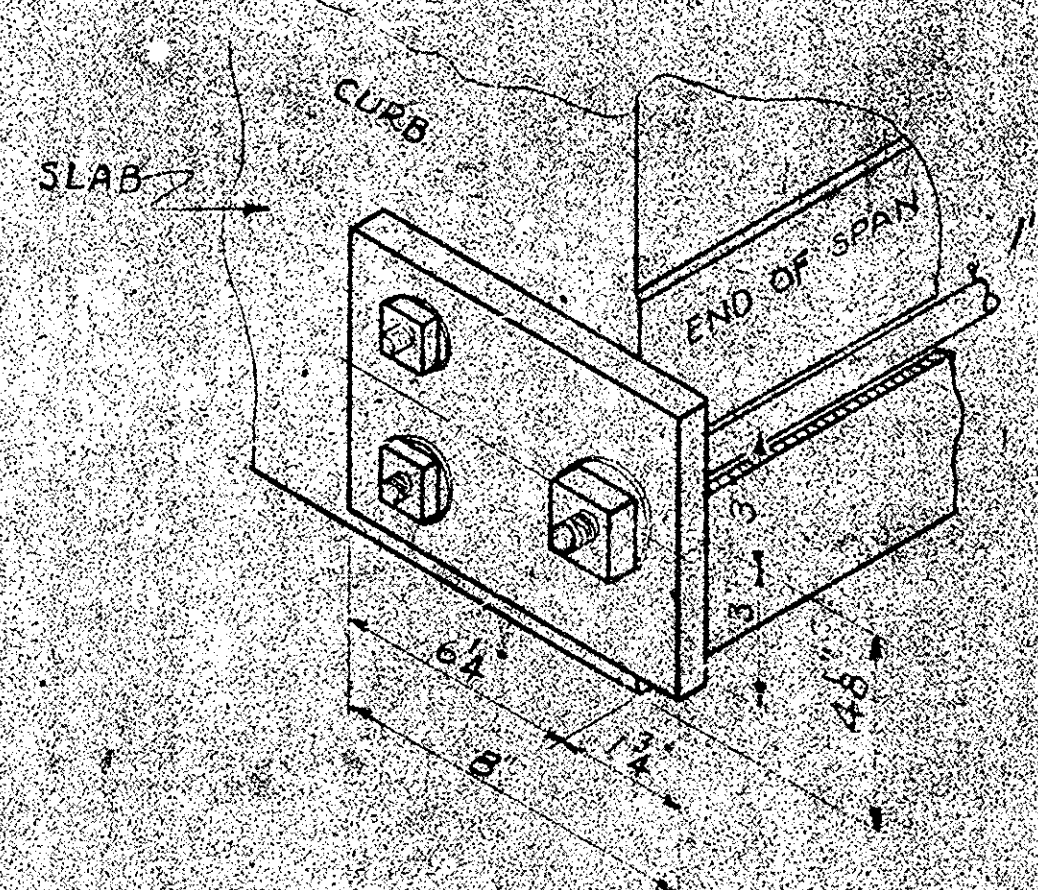
Notes:
 Design data - A.A.S.H.O. Specifications (1958) H-10, 14 live load 15, 20,000 psi, f'c=1600 psi, n=8, f'e=4000 psi.
 All concrete shall be Class AA.
 Structural grade reinforcing steel not permitted.
 All dimensions relative to reinforcing steel are to centers of bars.
 All exposed concrete edges, except as noted shall be chamfered 3/4" or edged with properly made edging tool.
 Concrete shall be placed in forms as dry as practicable, unvibrated. If transit mixed concrete is used, add all water, at site of pour.

Note:
 The design live load H-10 shall be placed on the outside face of right curb at near end of each span. The letters and numerals will be furnished by the S.C.H.D.

PLAN
 SCALE 3" = 1'-0"

Recommended for Approval
 Maintenance Engineer
 Approved
 State Highway Engineer

W. H. Hugh
 2-12-57
 S. J. Norman
 2-12-57



LOCATION PLATE AT END OF END SPAN
 SCALE 3" = 1'-0"

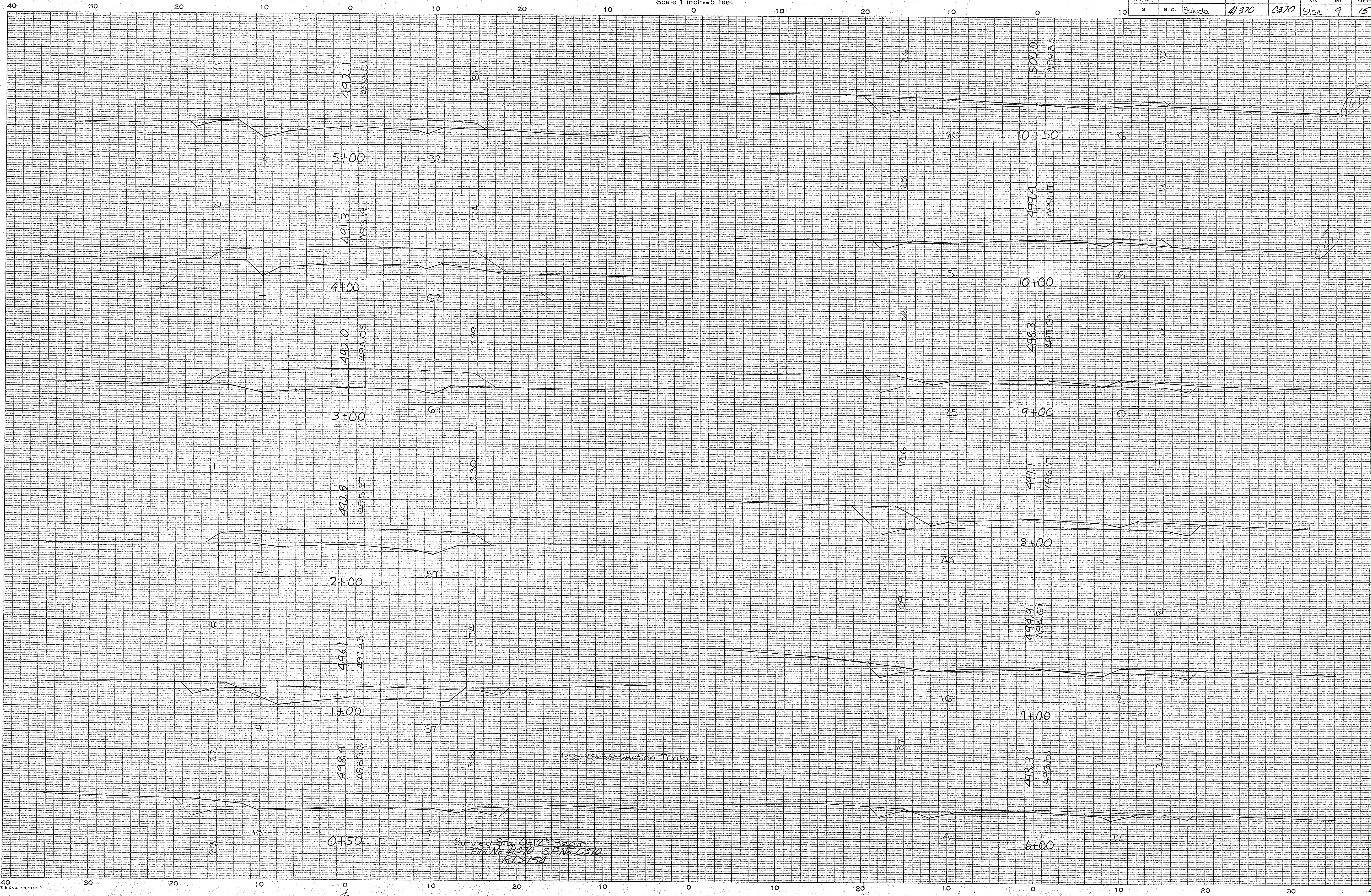
CONCRETE	
ONE CURB SECTION	1.44 C.Y.
ONE SLAB	2.10 C.Y.
TOTAL ONE SPAN	11.28 C.Y.
ONE CAP	1.21 C.Y.

REV		S.C. STATE HIGHWAY DEPARTMENT
REV		BRIDGE DIVISION
REV		COLUMBIA, S.C.
REV		H 10-44
REV		PRECAST CONCRETE
REV		BRIDGE STANDARD
REV		15' SPAN - 26' ROADWAY
REVIEWED	IN CHARGE	DOCKET NO.
QUANTITIES	HDL 1-57	COUNTY
TR. ENGRS	1-57	ROUTE NO.
DR.	HDL 1-57	DATE
DESIGNS	DFD 1-57	APPROVED BY
BY	CHK/DTE	BRIDGE DESIGN PLANS ENG.
		APPROVED BY
		BRIDGE ENG.

CROSS SECTIONS

Scale 1 inch = 5 feet

FED. ROAD DIV. NO.	STATE	COUNTY	FILE NO.	PROJECT NO.	SHEET NO.	TOTAL SHEETS
8	S. C.	Saluda	41370	C370	9	15



Saluda Co.
Rd. S-154

Ground Surface Platted by	L.V.
" " Checked by	
Template Sections Platted by	
" " Checked by	
Areas by	
" " Checked by	
Template Sections Revised by	
" " Checked by	
Final Areas by	
" " Checked by	
Quantities Transferred and Inked by	

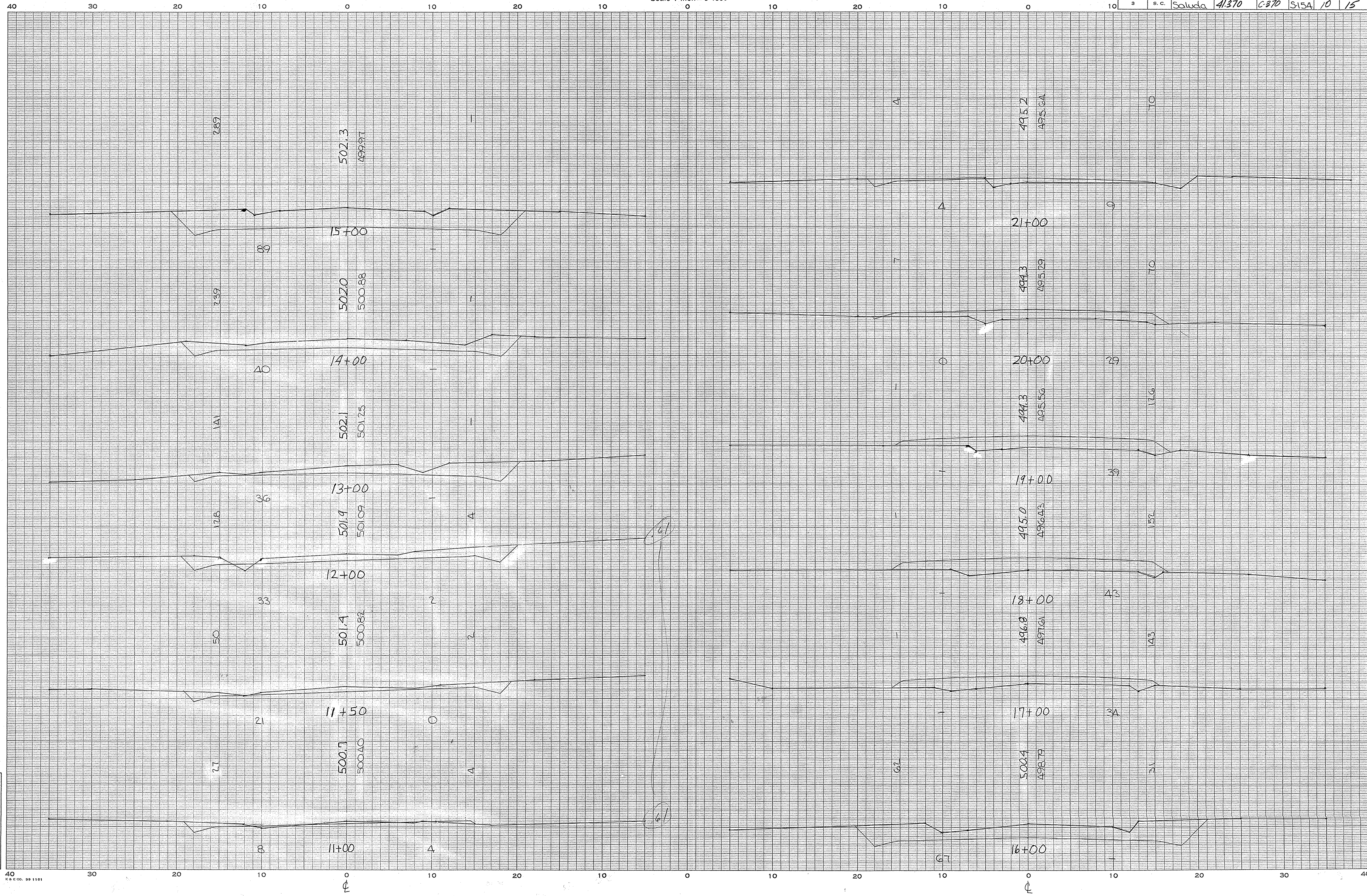
Survey Sta. 0+12.25 Begin
File No. 41370 S.P. No. C-370
R/S-154

Use 28-36 Section Thruout

CROSS SECTIONS

Scale 1 inch = 5 feet

FED. ROAD DIV. NO.	STATE	COUNTY	FILE NO.	PROJECT NO.	NO.	SHEET NO.	TOTAL SHEETS
3	S. C.	Saluda	41.370	C-270	15A	10	15



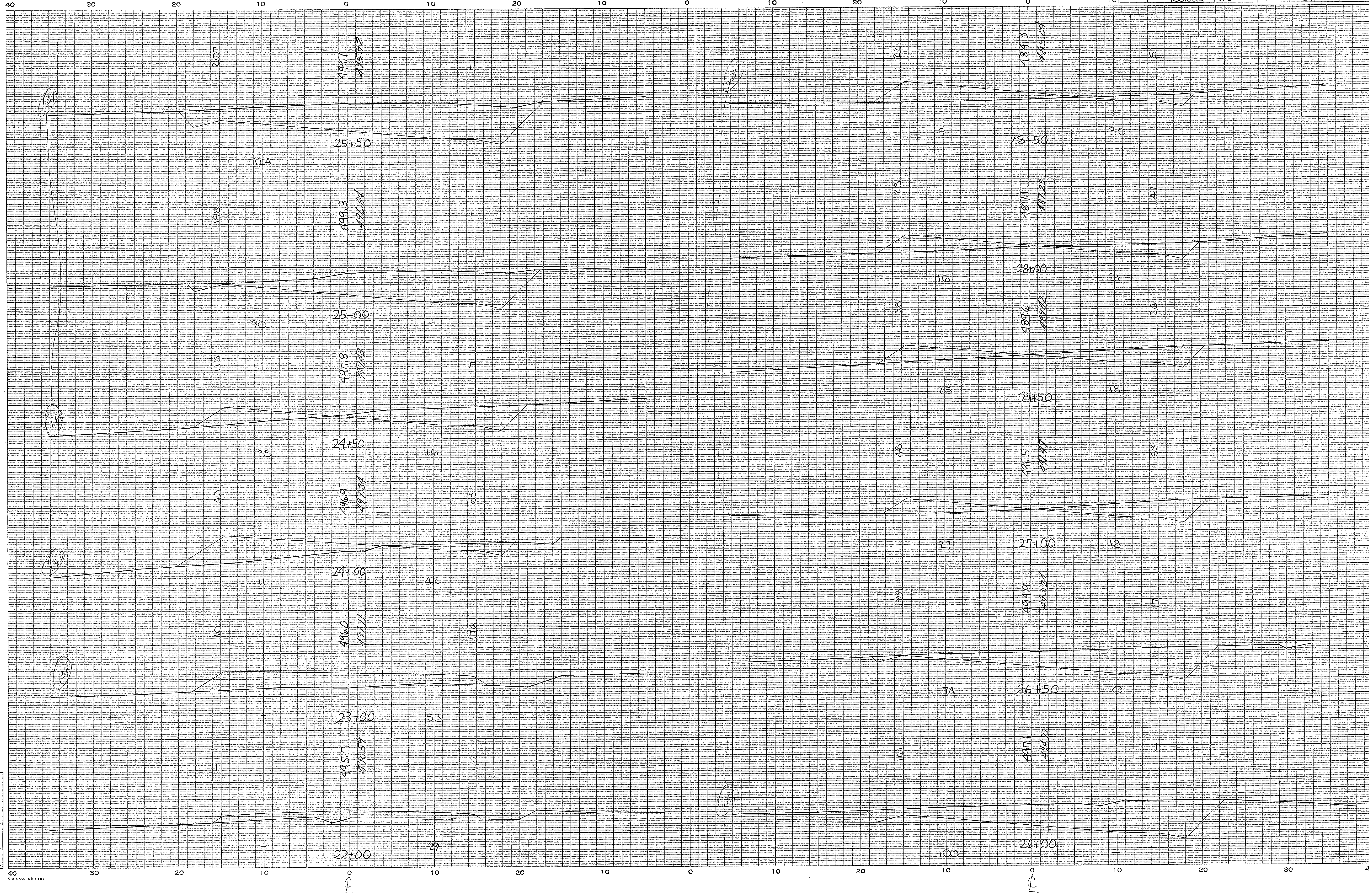
Saluda Co.
Rd. S-154

Ground Surface Platted by L. Y.
 " " Checked by _____
 Template Sections Platted by _____
 " " Checked by _____
 Areas by _____
 " " Checked by _____
 Template Sections Revised by _____
 " " Checked by _____
 Final Areas by _____
 " " Checked by _____
 Quantities Transferred and Inked by _____

CROSS SECTIONS

Scale 1 inch = 5 feet

FED. ROAD DIV. NO.	STATE	COUNTY	FILE NO.	PROJECT NO.	KSHEET NO.	SHEET NO.	TOTAL SHEETS
3	S. C.	Saluda	41370	C370	S15A	11	15



Saluda Co.
S-154

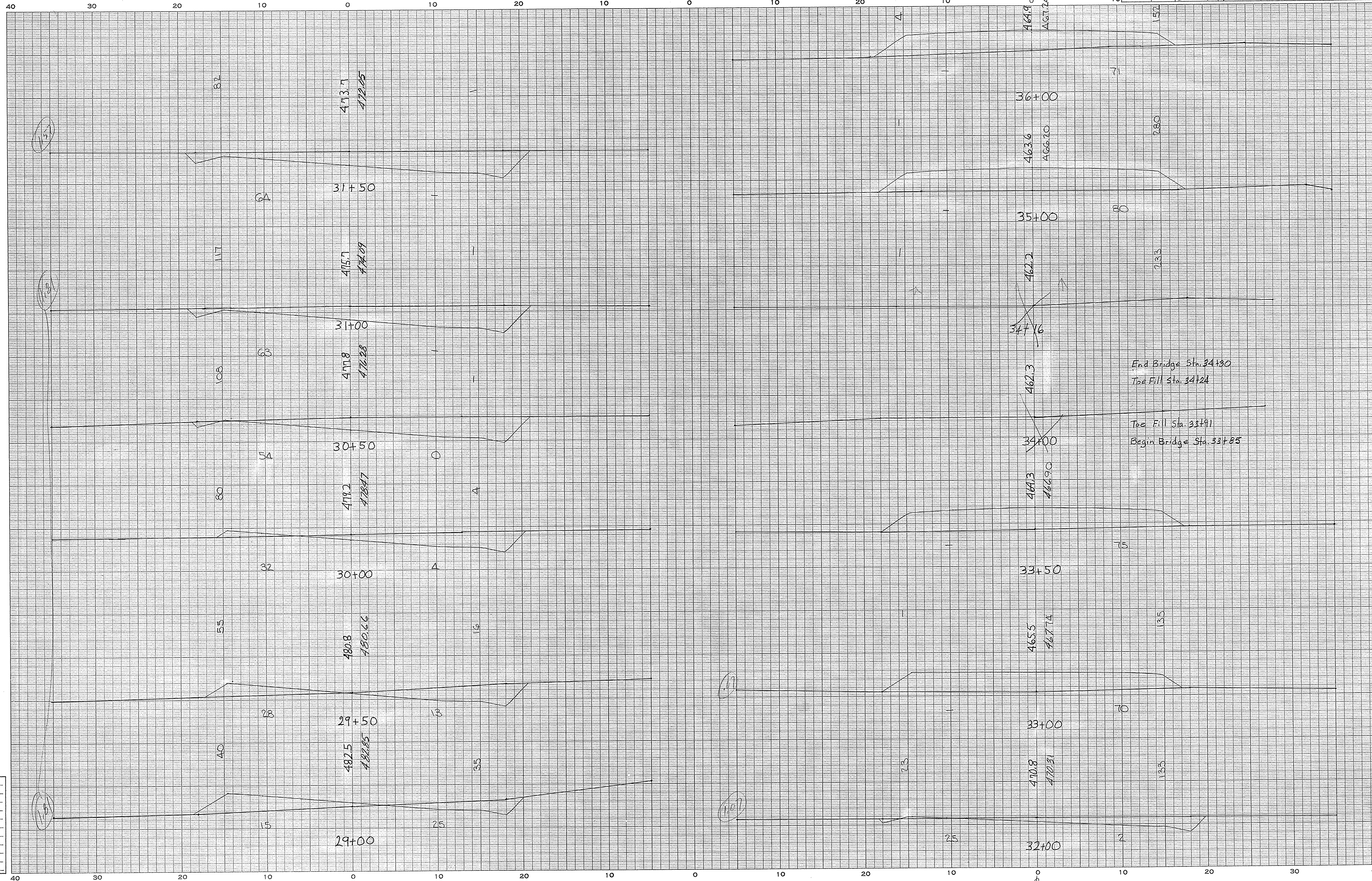
Ground Surface Platted by	L. V.
" " Checked by	
Template Sections Platted by	
" " Checked by	
Areas by	
" " Checked by	
Template Sections Revised by	
" " Checked by	
Final Areas by	
" " Checked by	
Quantities Transferred and Inked by	

③

CROSS SECTIONS

Scale 1 inch = 5 feet

FED. ROAD DIV. NO.	STATE	COUNTY	FILE NO.	PROJECT NO.	SHEET NO.	TOTAL SHEETS
3	S. C.	Saluda	41370	C370	S15A	12



SALUDA Co.
S-154

Ground Surface Platted by	L.Y.
" " Checked by	
Template Sections Platted by	
" " Checked by	
Areas by	
" " Checked by	
Template Sections Revised by	
" " Checked by	
Final Areas by	
" " Checked by	
Quantities Transferred and Inked by	

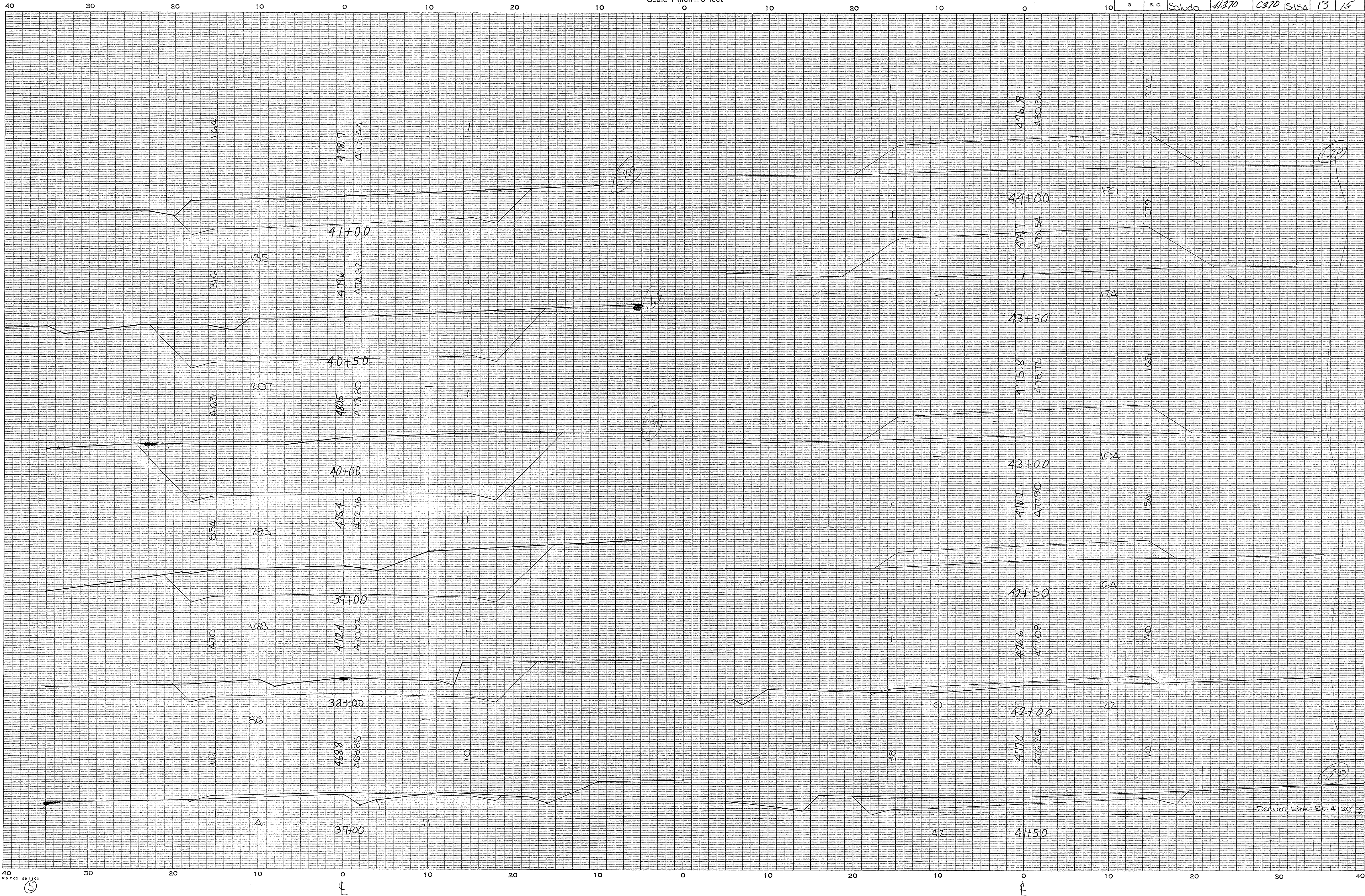
44 P. CO. 99 1101

④

CROSS SECTIONS

Scale 1 inch = 5 feet

FED. ROAD DIV. NO.	STATE	COUNTY	FILE NO.	PROJECT NO.	SHEET NO.	TOTAL SHEETS
3	S. C.	Saluda	41370	C370	13	15



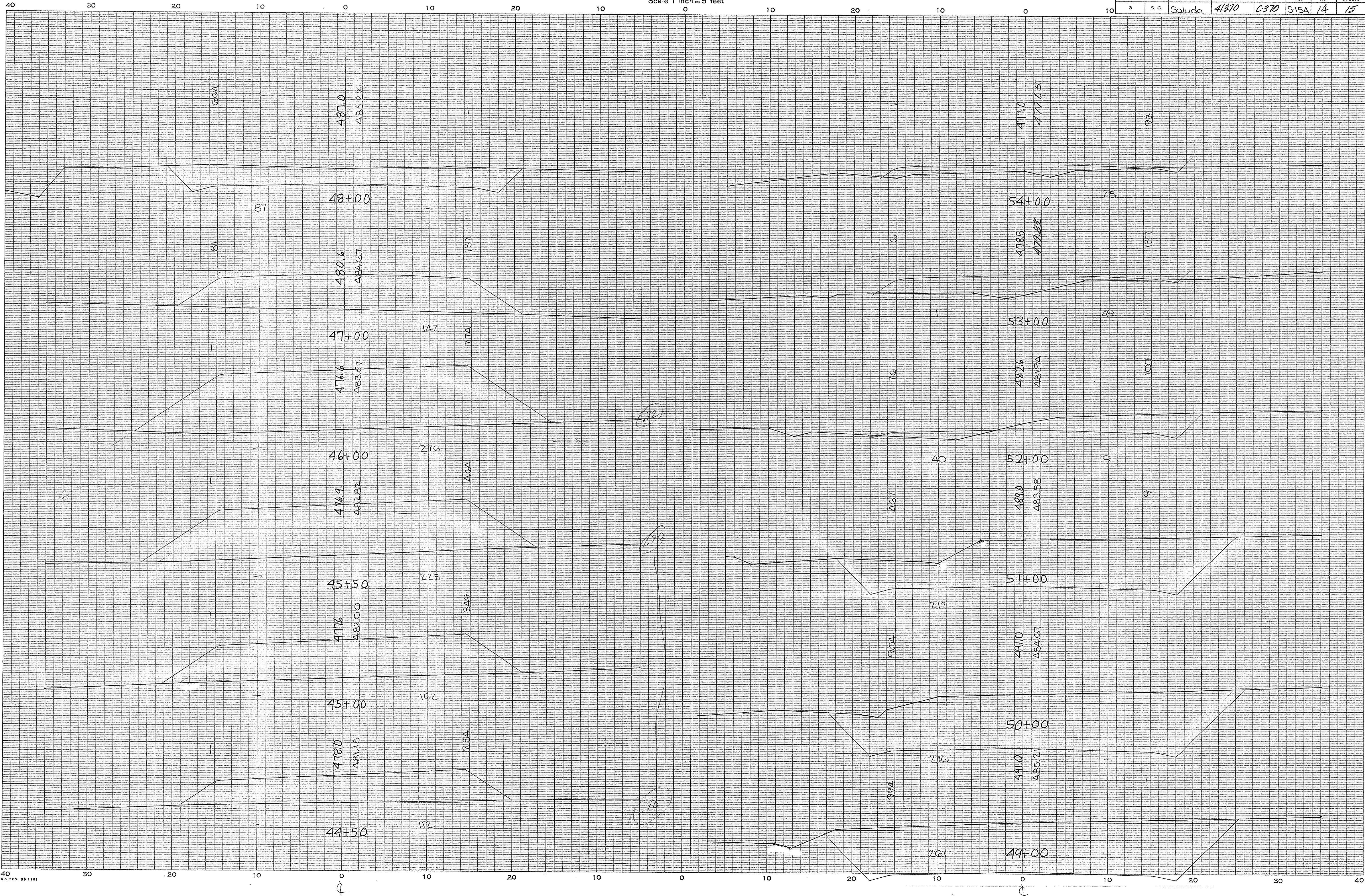
SALUDA CO.
S-154

Ground Surface Plotted by L.Y.
 " " Checked by _____
 Template Sections Plotted by _____
 " " Checked by _____
 Areas by _____
 " " Checked by _____
 Template Sections Revised by _____
 " " Checked by _____
 Final Areas by _____
 " " Checked by _____
 Quantities Transferred and Inked by _____

CROSS SECTIONS

Scale 1 inch = 5 feet

FED. ROAD DIV. NO.	STATE	COUNTY	FILE NO.	PROJECT NO.	SHEET NO.	TOTAL SHEETS
3	S. C.	Saluda	41370	C-370	S15A 14	15



SALUDA CO.
S-154

Ground Surface Platted by L.V.
 " " Checked by _____
 Template Sections Platted by _____
 " " Checked by _____
 Areas by _____
 " " Checked by _____
 Template Sections Revised by _____
 " " Checked by _____
 Final Areas by _____
 " " Checked by _____
 Quantities Transferred and Inked by _____

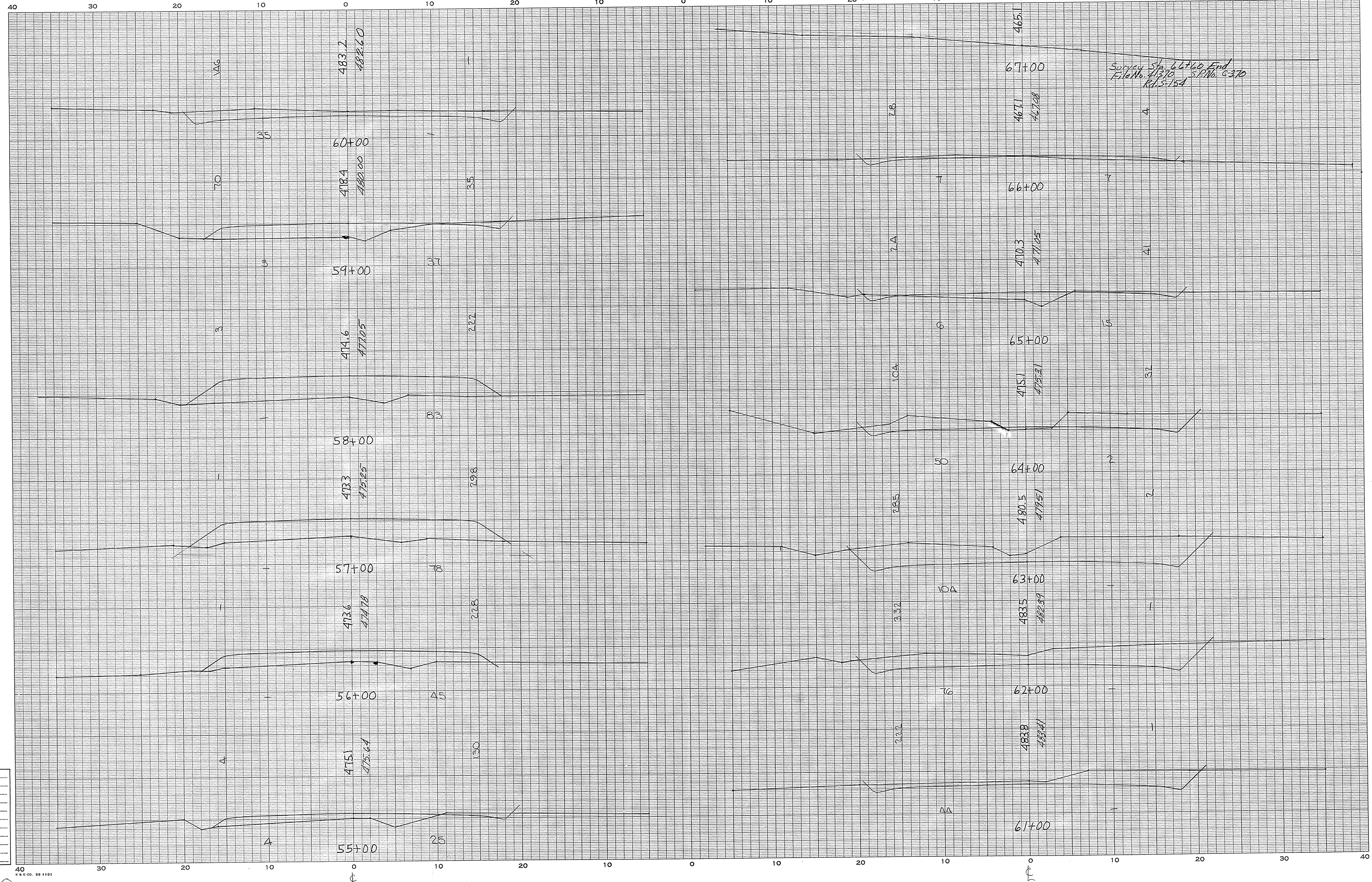
6

40
K&E CO. 99 1101

CROSS SECTIONS

Scale 1 inch = 5 feet

FED. ROAD DIV. NO.	STATE	COUNTY	FILE NO.	PROJECT NO.	ROUTE NO.	SHEET NO.	TOTAL SHEETS
3	S. C.	Saluda	41370	0370	5-154	15	15



Survey Sta. 64+00 End
File No. 41370 S.P. No. 6-370
R.L.S. 154

SALUDA CO.
S-154

Ground Surface Platted by L.V.
 " " Checked by _____
 Template Sections Platted by _____
 " " Checked by _____
 Areas by _____
 " " Checked by _____
 Template Sections Revised by _____
 " " Checked by _____
 Final Areas by _____
 " " Checked by _____
 Quantities Transferred and Inked by _____