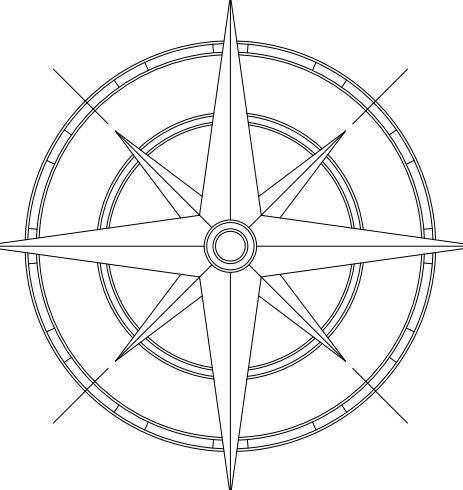


N  
S.C. Grid 83/2011



RE-ESTABLISHMENT OF A PORTION OF THE COMMON  
BOUNDARY OF EDGFIELD AND SALUDA COUNTIES

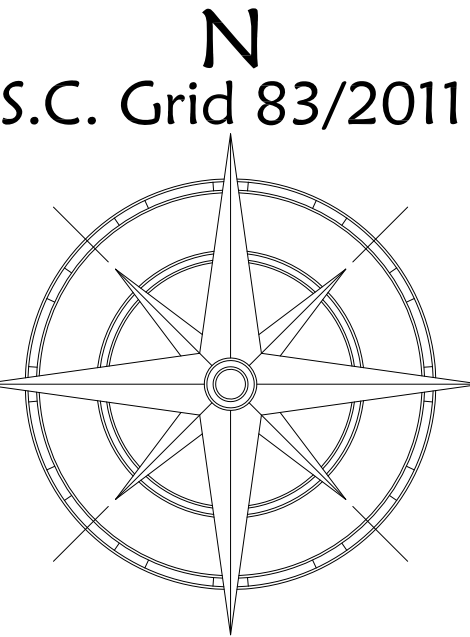
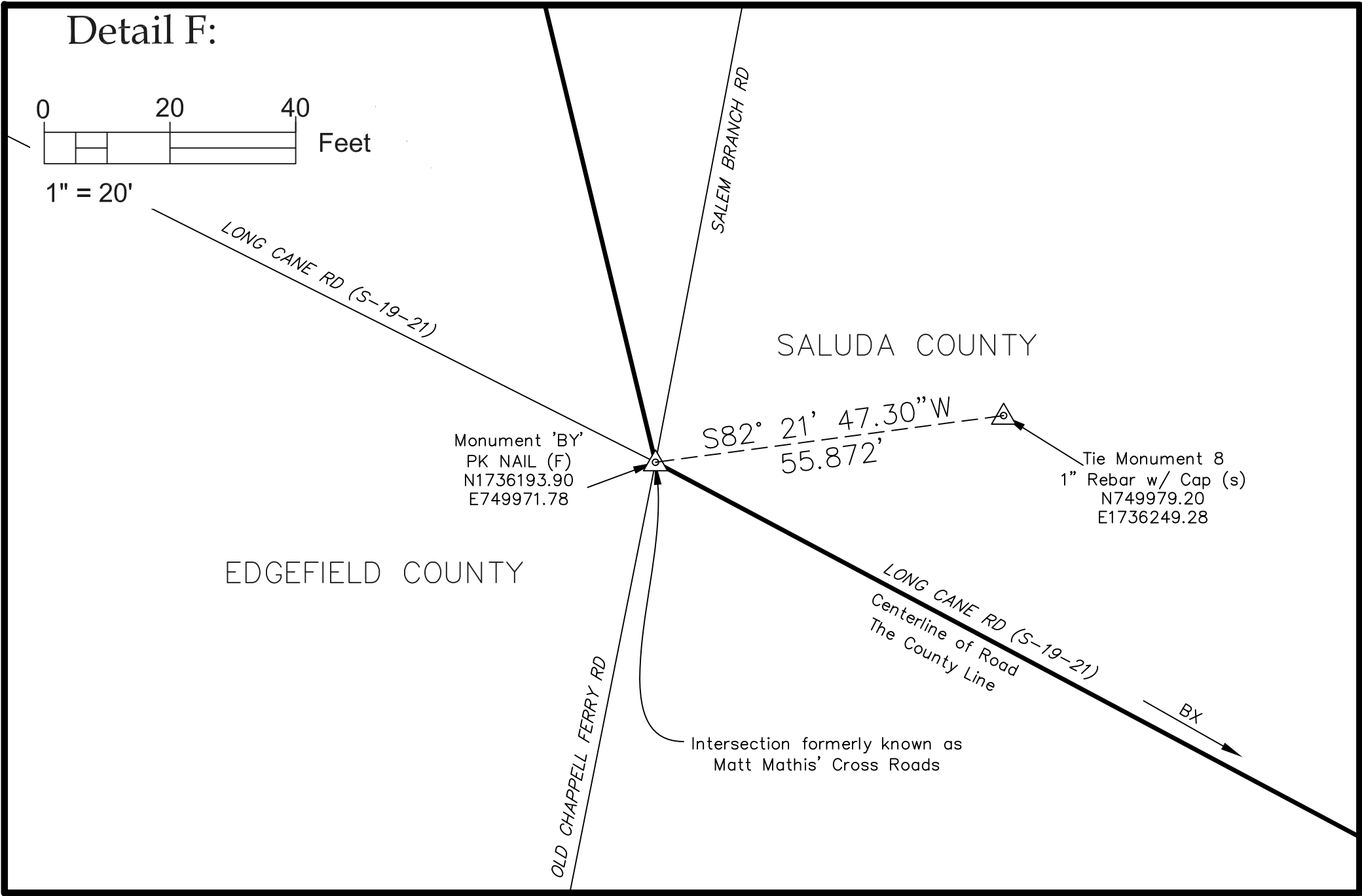
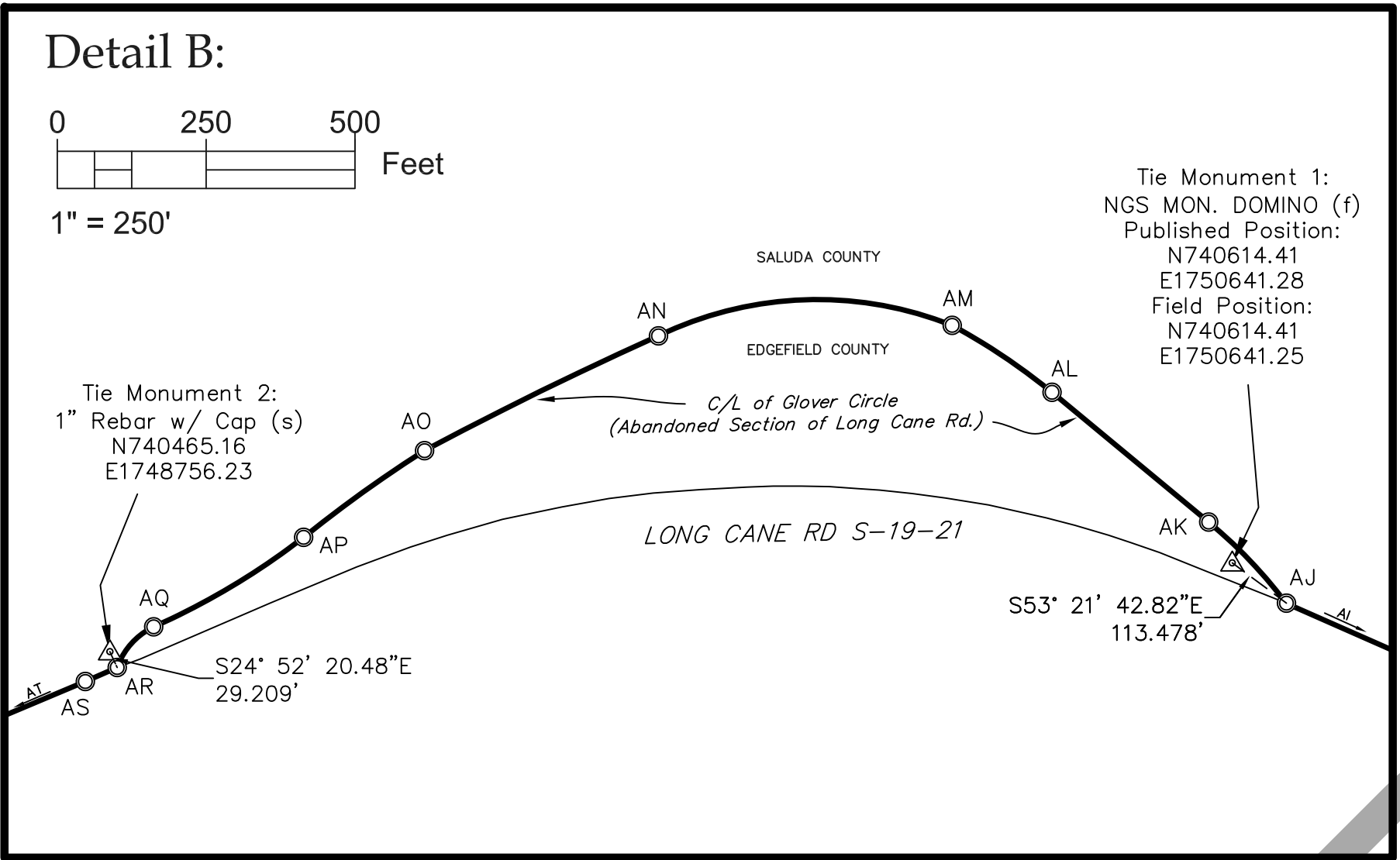
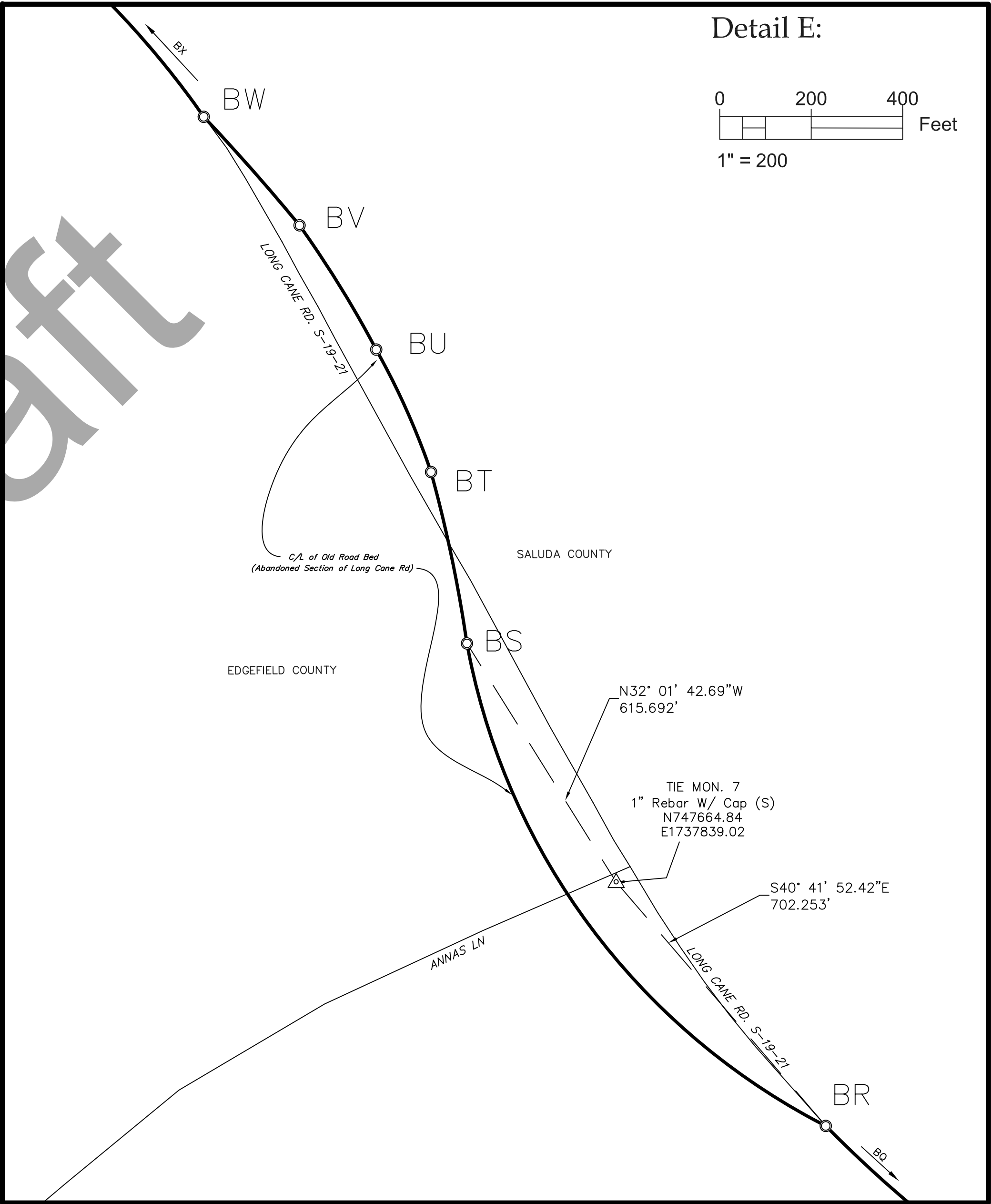
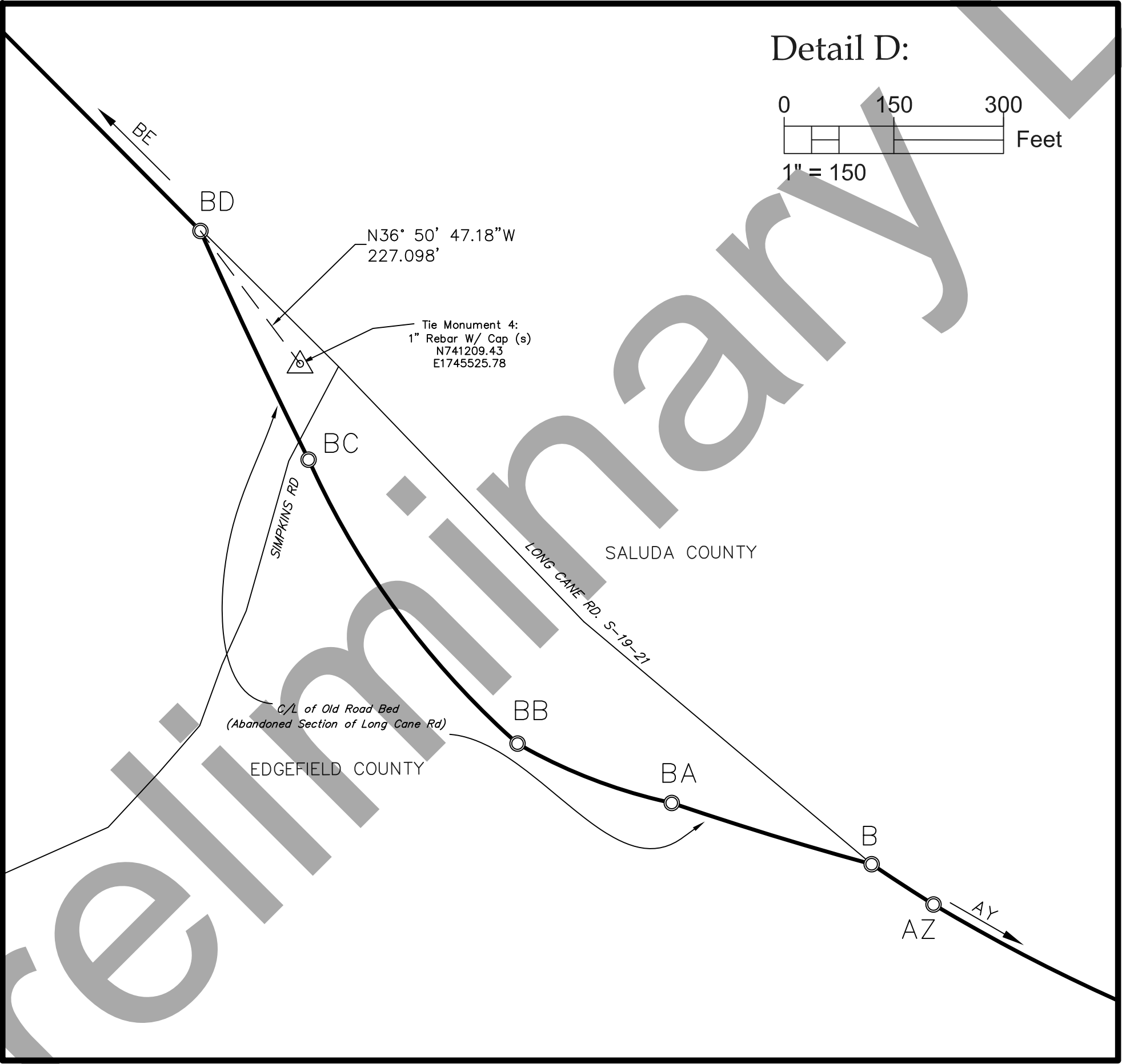
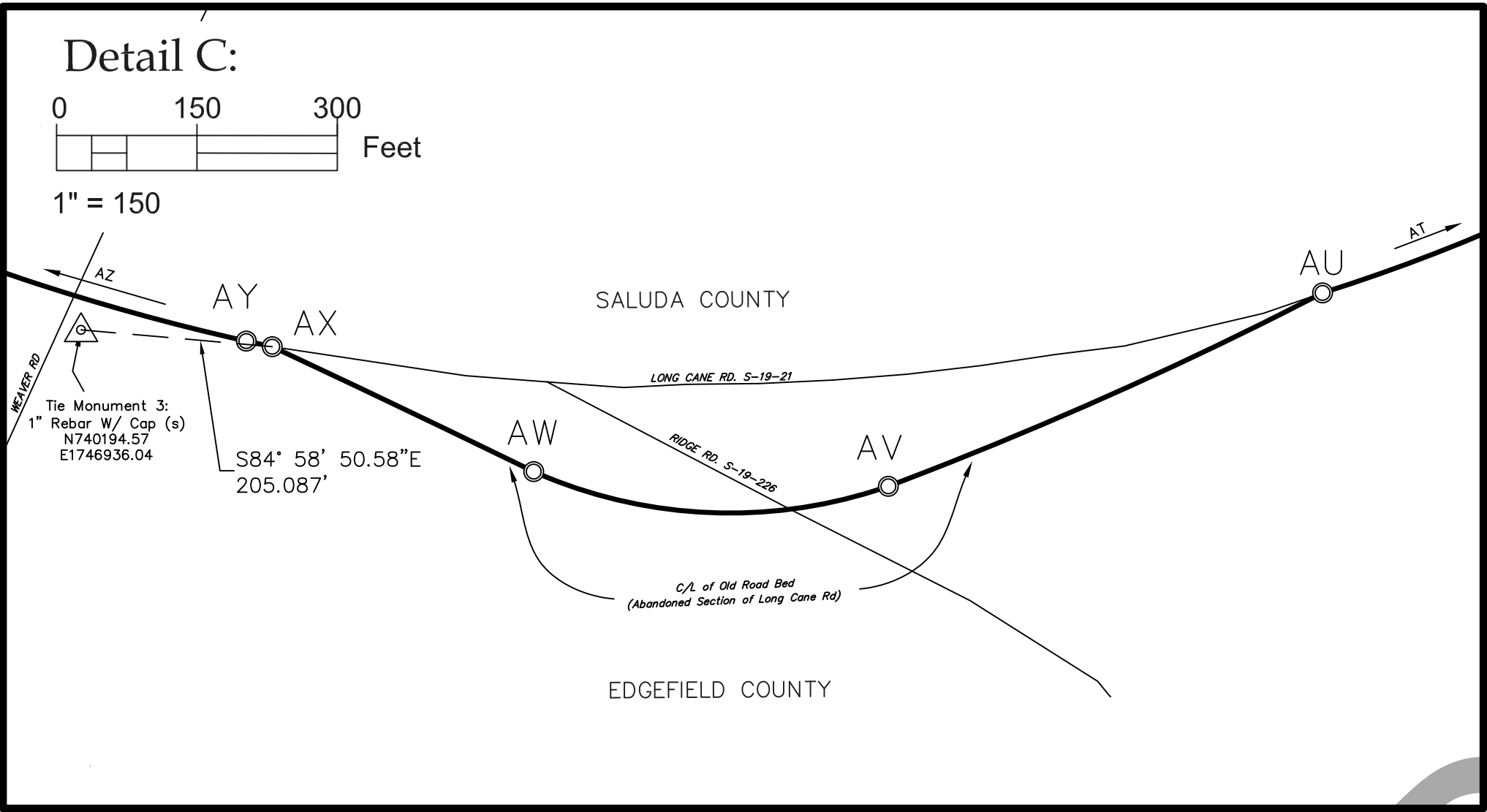
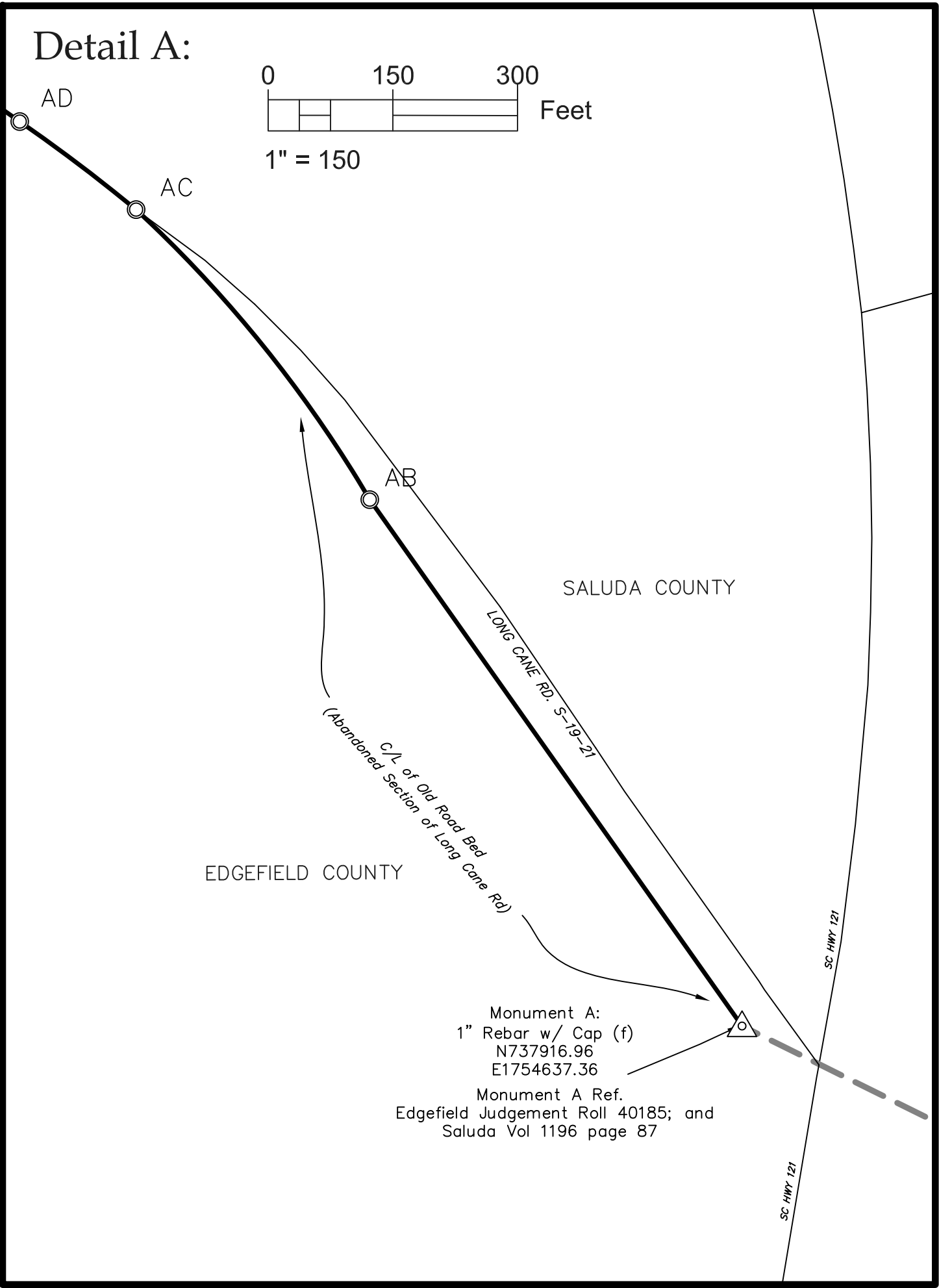
FIELD WORK AND MAP BY  
SOUTH CAROLINA GEODETIC SURVEY  
1000 ASSEMBLY ST; 4TH FLOOR  
COLUMBIA, SC 29201  
803.734.3793  
<http://rfa.sc.gov/geodetic>

I hereby state that to the best of my professional knowledge, information, and belief, the survey shown hereon was made in accordance with the requirements of the Standards of Practice Manual for Surveying in South Carolina, and meets or exceeds the requirements for a Class C survey as specified therein.

PROF. LAND SURVEYOR NO. 43366  
JACOB JORDAN BRAXTON

Date: December 7, 2023  
\*Date Reflects Final Day of Field Work

LEGEND	
(f)	Found
(c)	Calculated
(s)	Set
▲	Monument
○	Calculated Point



RE-ESTABLISHMENT OF A PORTION OF THE COMMON  
BOUNDARY OF EDGFIELD AND SALUDA COUNTIES

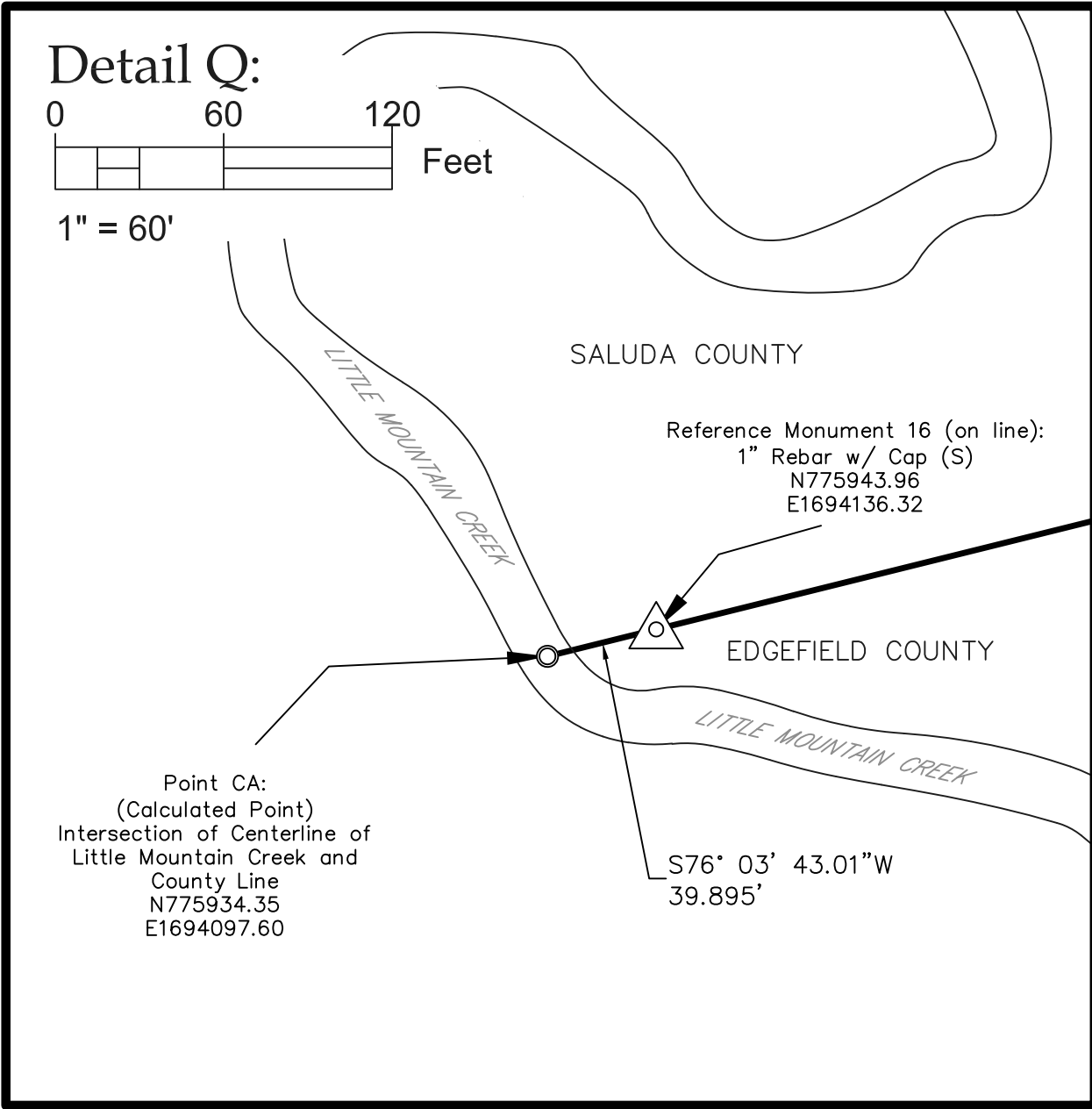
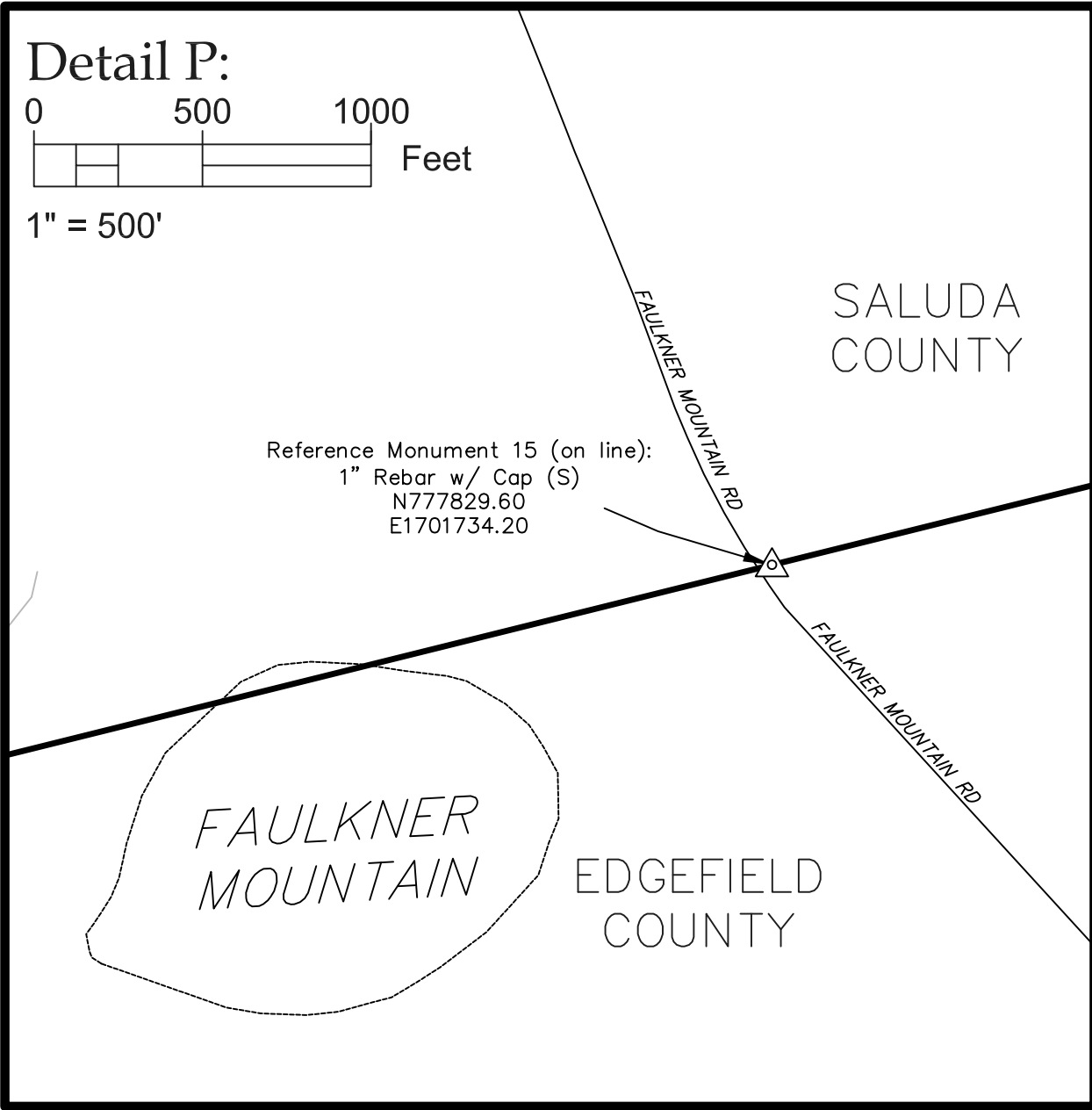
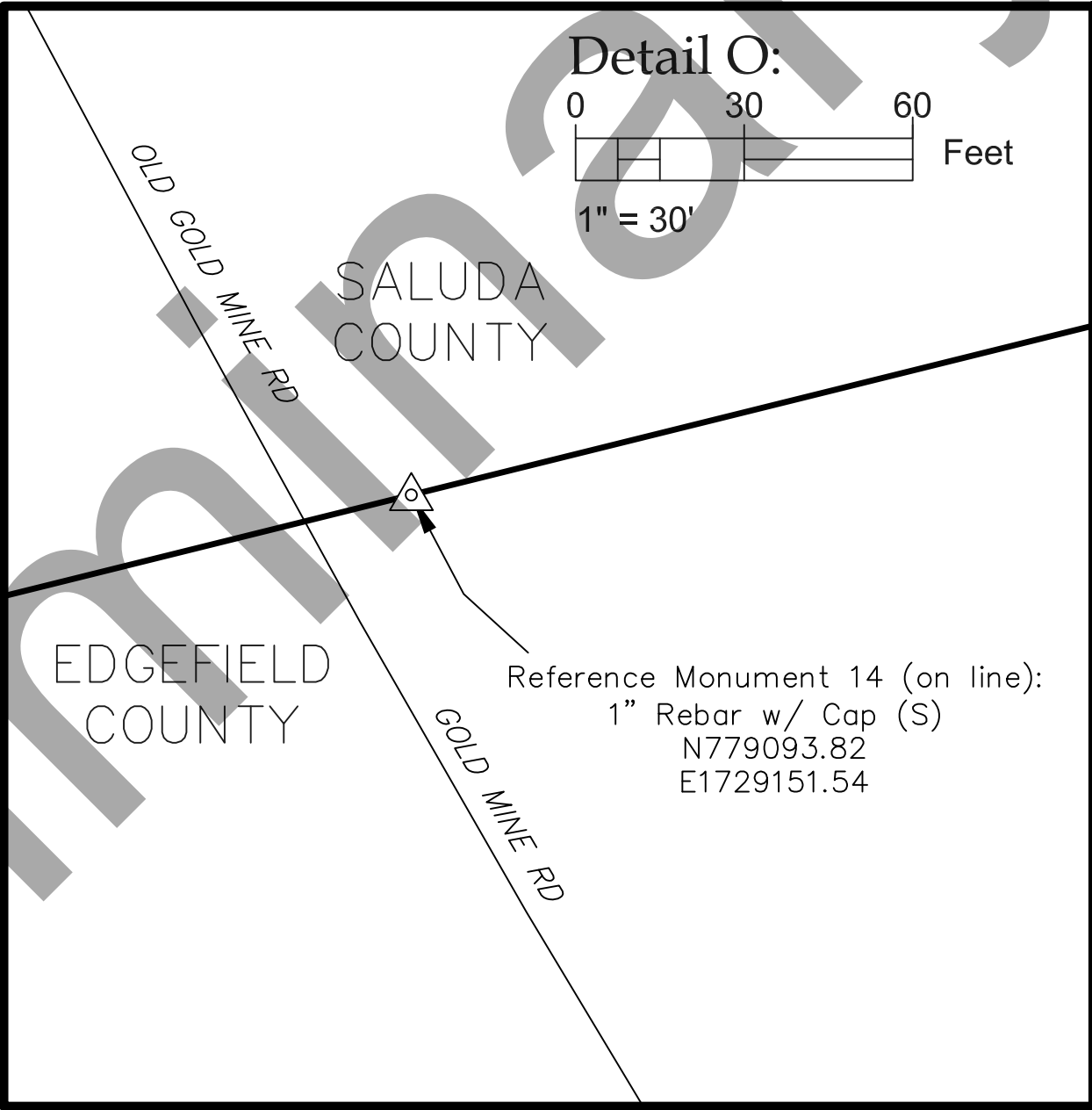
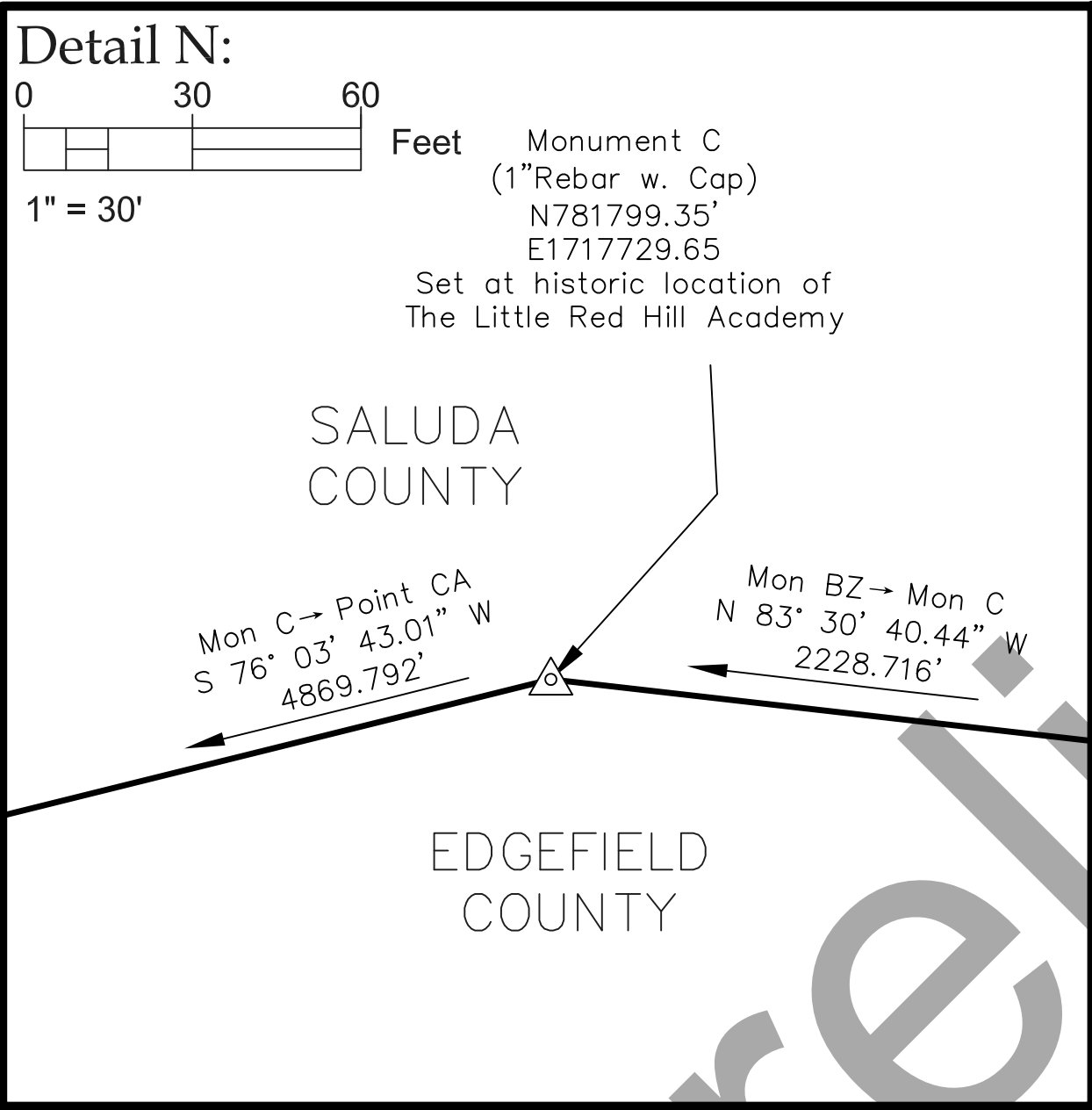
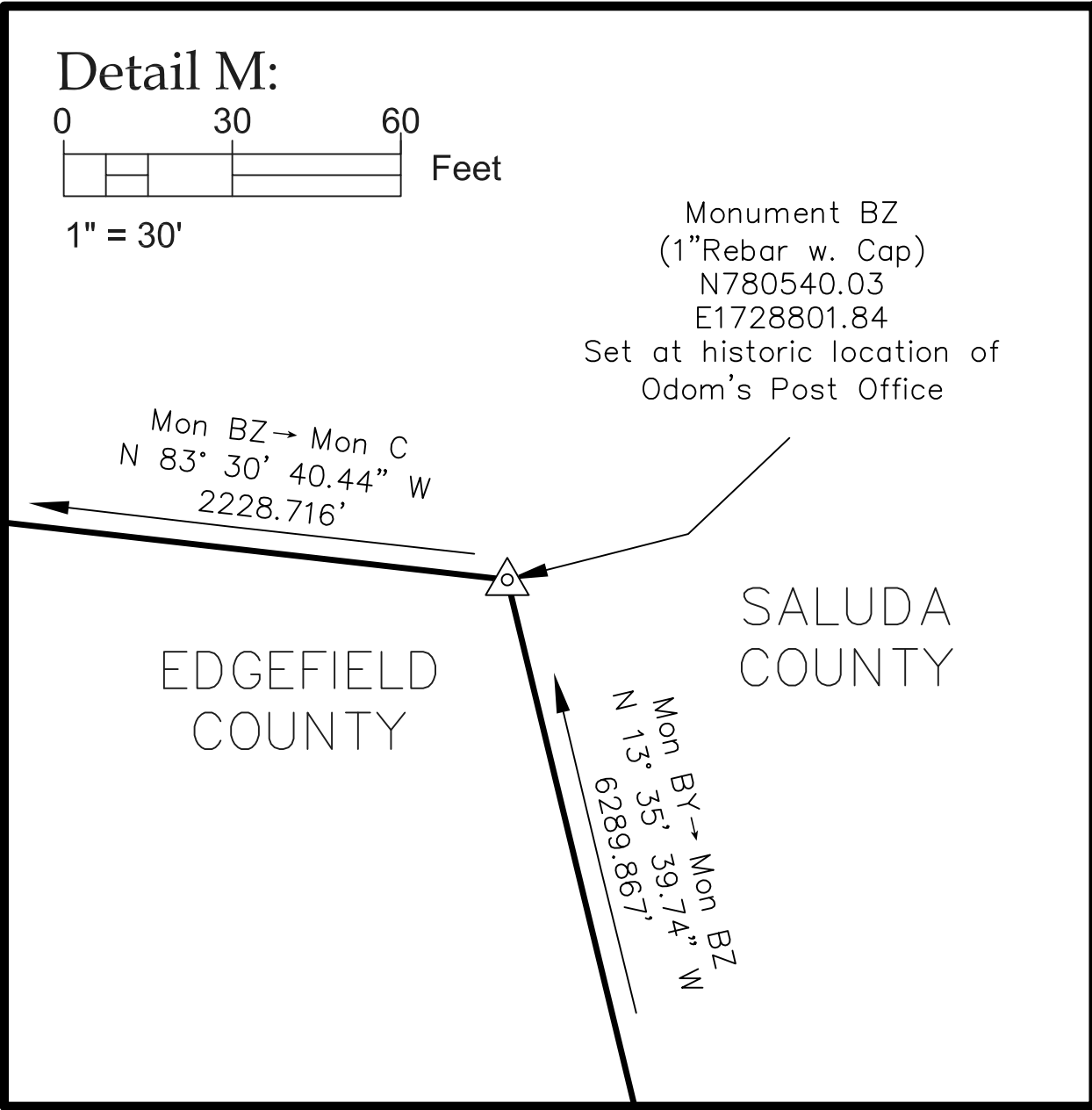
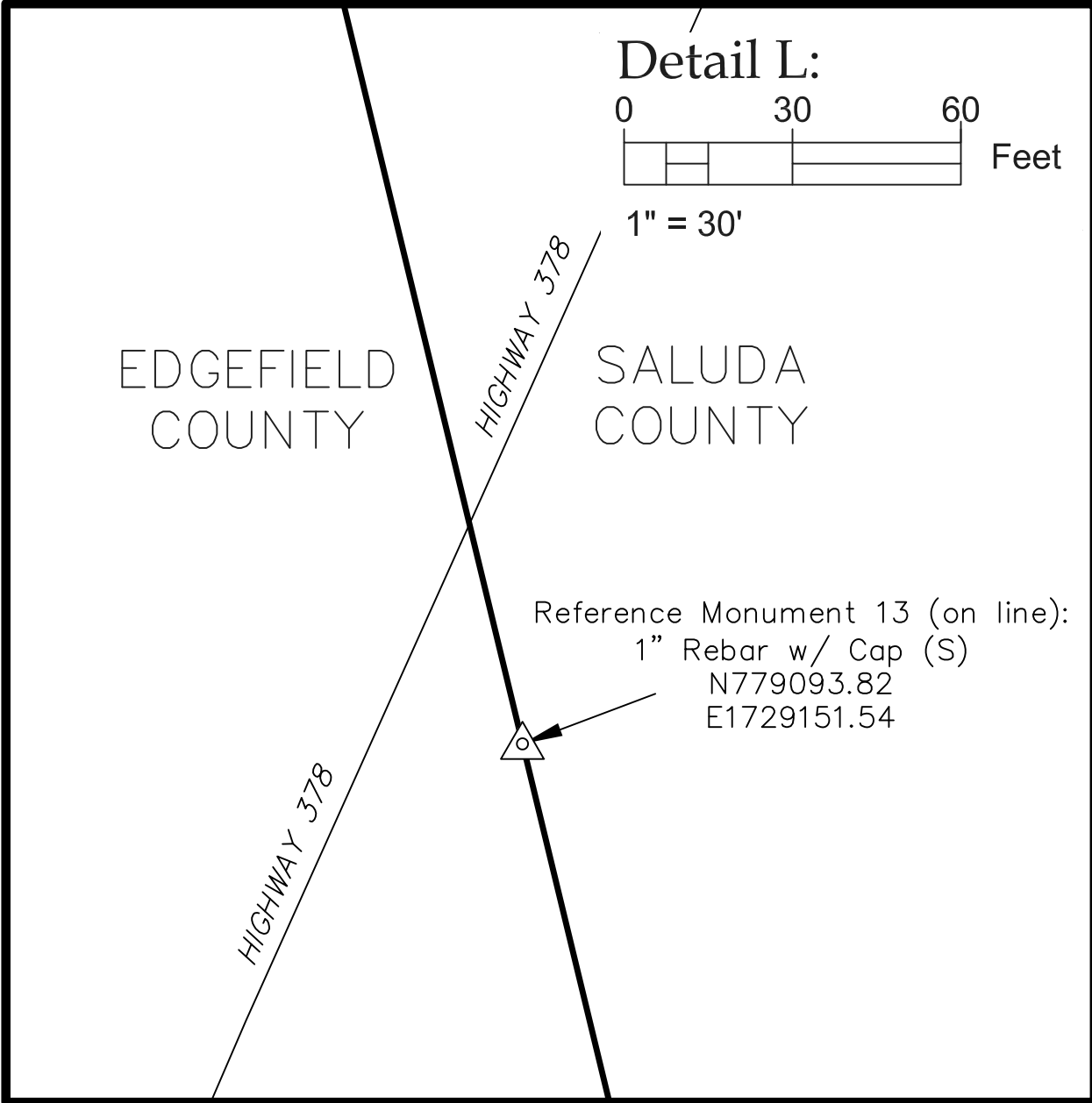
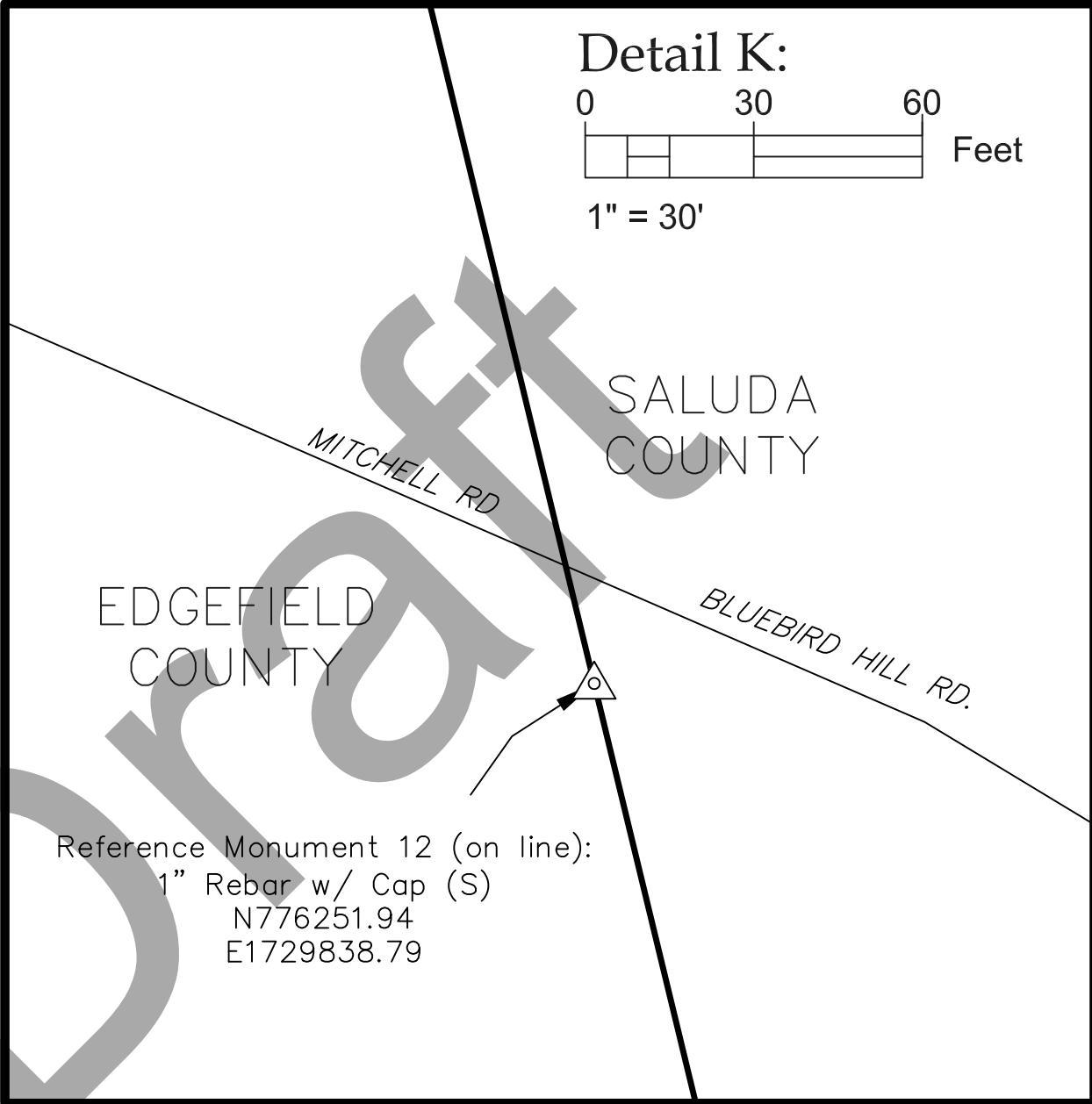
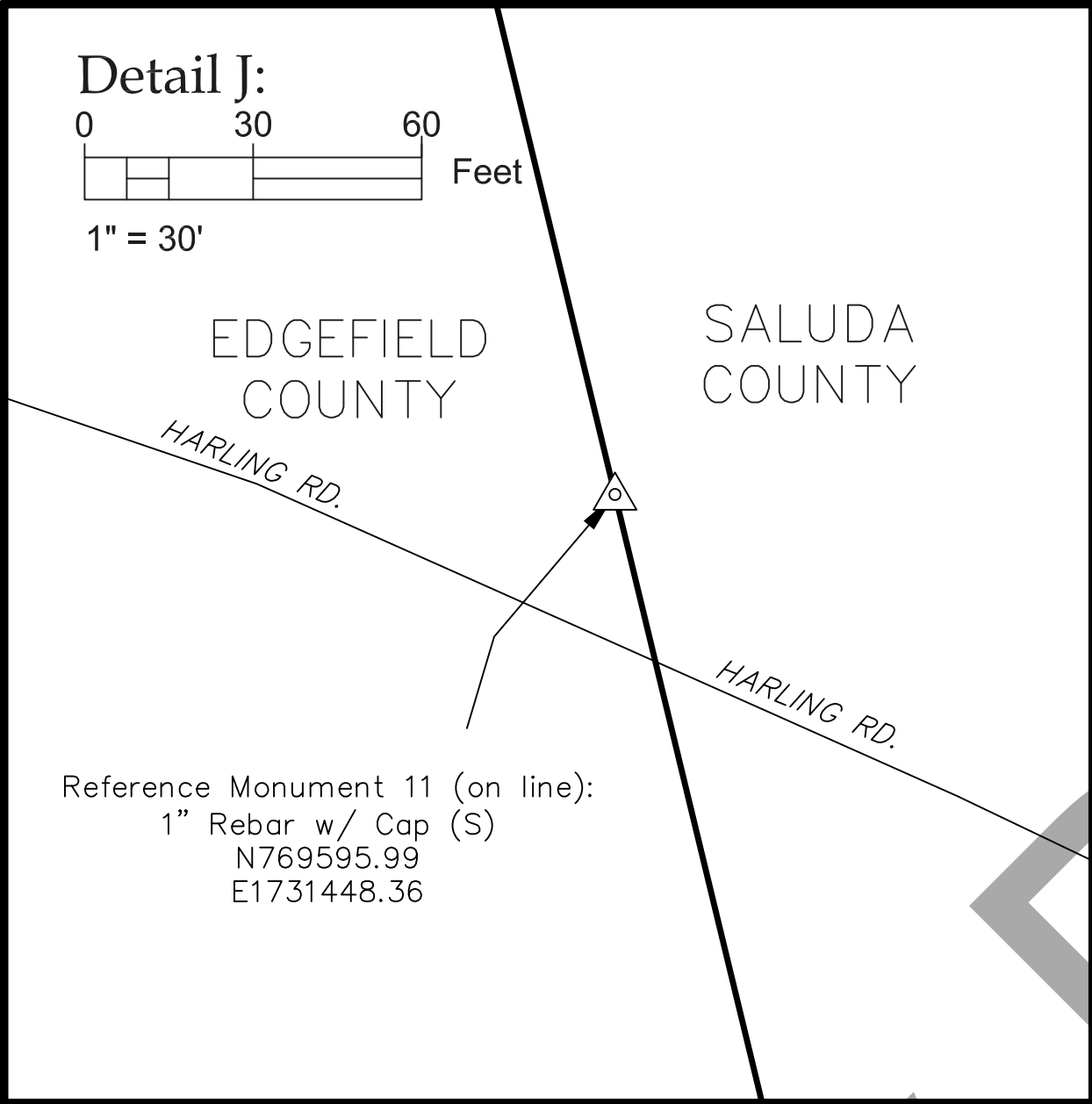
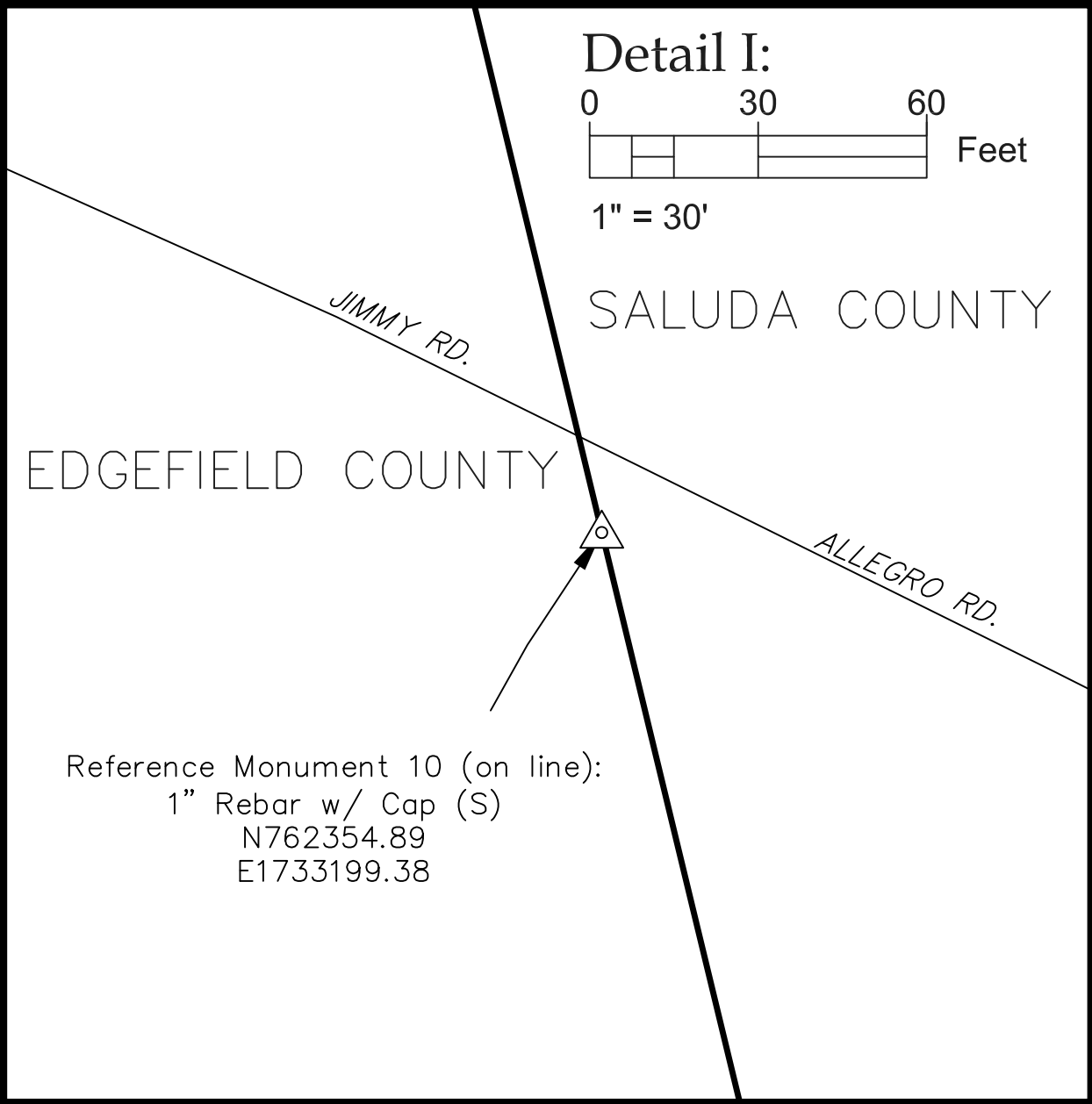
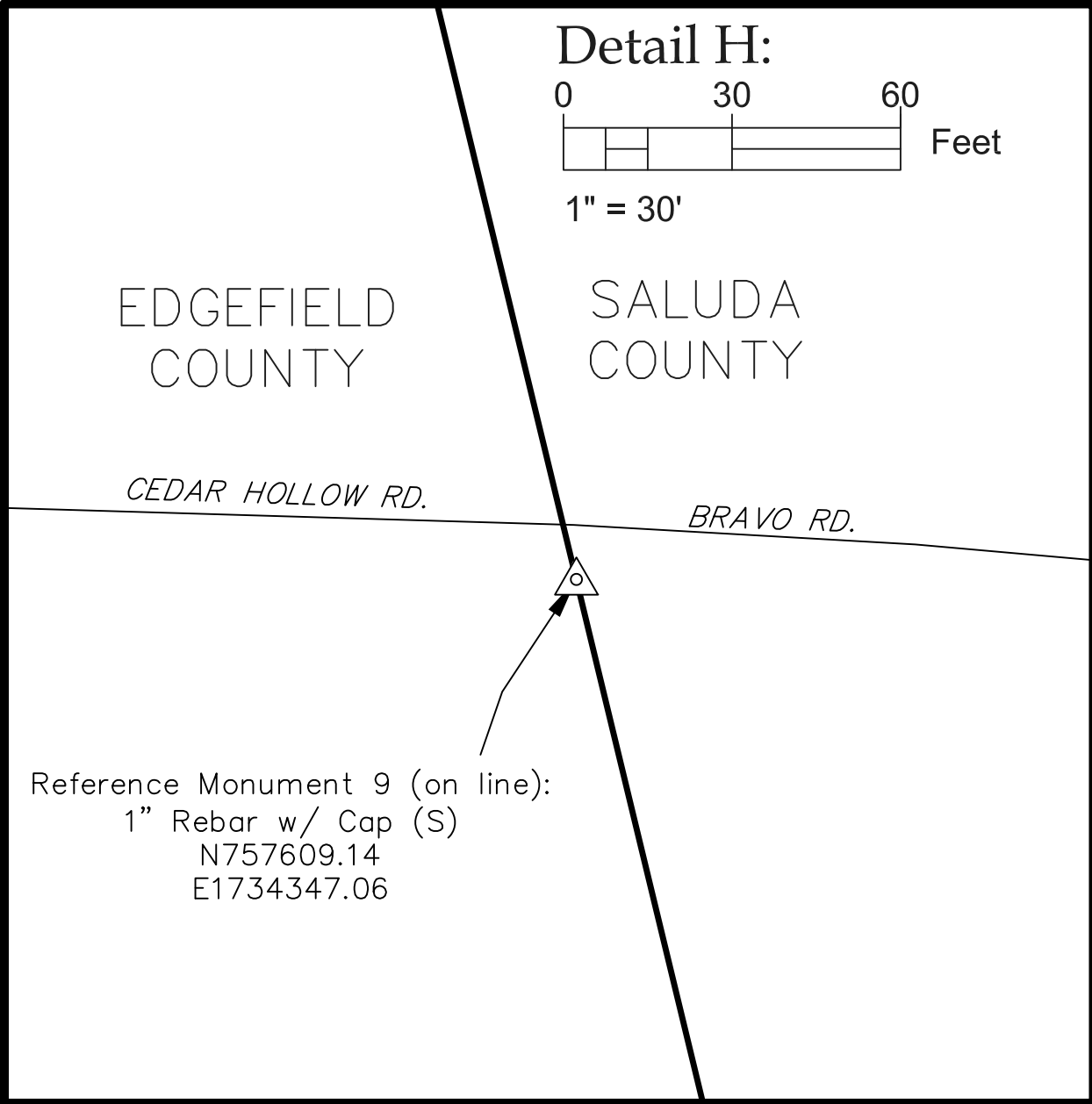
FIELD WORK AND MAP BY  
SOUTH CAROLINA GEODETIC SURVEY  
1000 ASSEMBLY ST; 4TH FLOOR  
COLUMBIA, SC 29201  
803.734.3793  
<http://rfa.sc.gov/geodetic>

I hereby state that to the best of my professional knowledge, information, and belief, the survey shown hereon was made in accordance with the requirements of the Standards of Practice Manual for Surveying in South Carolina, and meets or exceeds the requirements for a Class C survey as specified therein.

LEGEND	
(f)	Found
(c)	Calculated
(s)	Set
△	Monument
○	Calculated Point

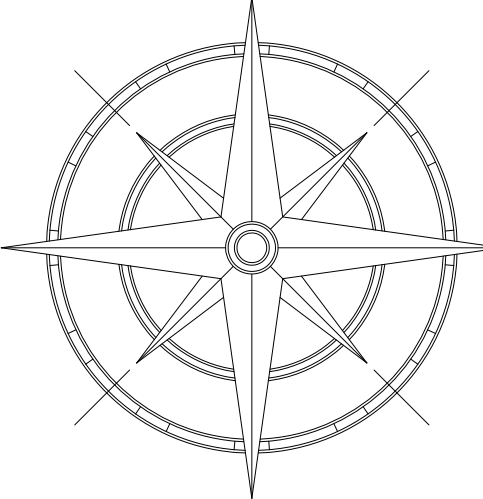
PROF. LAND SURVEYOR NO. 43366  
JACOB JORDAN BRAXTON

Date: December 7, 2023  
\*Date Reflects Final Day of Field Work



LEGEND	
(f)	Found
(c)	Calculated
(s)	Set
△	Monument
○	Calculated Point

N  
S.C. Grid 83/2011



RE-ESTABLISHMENT OF A PORTION OF THE COMMON  
BOUNDARY OF EDGFIELD AND SALUDA COUNTIES

FIELD WORK AND MAP BY  
SOUTH CAROLINA GEODETIC SURVEY  
1000 ASSEMBLY ST; 4TH FLOOR  
COLUMBIA, SC 29201  
803.734.3793  
<http://rfa.sc.gov/geodetic>

I hereby state that to the best of my  
professional knowledge, information, and  
belief, the survey shown hereon was made  
in accordance with the requirements of  
the Standards of Practice Manual for  
Surveying in South Carolina, and meets or  
exceeds the requirements for a Class C  
survey as specified therein.

PROF. LAND SURVEYOR NO. 43366  
JACOB JORDAN BRAXTON

Date: December 7, 2023  
\*Date Reflects Final Day of Field Work

Long Cane Road Line Table		
Line Segment	Length	Bearing
A → AB	775.53	N35° 16' 17.99"W

Long Cane Road Curve Table					
Line Segment	Length	Radius	Delta	Chord Length	Chord Direction
AB → AC	449.43	1553.87	16.57	447.87	N38° 51' 27"W
AC → AD	175.65	2135.06	4.71	175.60	N52° 53' 14"W
AD → AE	557.99	39995.02	0.80	557.98	N55° 22' 28"W
AE → AF	788.34	3701.15	12.20	786.85	N60° 19' 34"W
AF → AG	409.94	23392.89	1.00	409.94	N66° 21' 56"W

Long Cane Road Line Table		
Line Segment	Length	Bearing
AG → AH	508.42	N66° 19' 07.87"W
AH → AI	459.04	N65° 55' 54.44"W
AI → AJ	692.07	N66° 12' 39.42"W

Long Cane Road Curve Table					
Line Segment	Length	Radius	Delta	Chord Length	Chord Direction
AJ → AK	189.35	821.60	13.20	188.93	N43° 40' 34"W

Long Cane Road Line Table		
Line Segment	Length	Bearing
AK → AL	341.80	N50° 20' 55.68"W

Long Cane Road Curve Table					
Line Segment	Length	Radius	Delta	Chord Length	Chord Direction
AL → AM	202.02	1085.47	10.66	201.73	N56° 08' 06"W
AM → AN	508.09	613.01	47.49	493.67	S87° 57' 54"W
AN → AO	437.66	6399.54	3.92	437.58	S63° 50' 38"W
AO → AP	250.16	2210.87	6.48	250.03	S54° 21' 42"W
AP → AQ	294.16	1225.64	13.75	293.46	S59° 08' 46"W
AQ → AR	94.02	120.22	44.81	91.65	S41° 55' 23"W

Long Cane Road Line Table		
Line Segment	Length	Bearing
AR → AS	58.51	S66° 10' 25.29"W
AS → AT	292.91	S67° 12' 33.65"W

Long Cane Road Curve Table					
Line Segment	Length	Radius	Delta	Chord Length	Chord Direction
AT → AU	194.37	2040.38	5.46	194.30	S69° 39' 35"W
AU → AV	508.19	4400.26	6.62	507.91	S65° 59' 35"W
AV → AW	388.37	517.64	42.99	379.32	N87° 37' 56"W
AW → AX	309.74	19965.08	0.89	309.74	N64° 27' 11"W
AX → AY	28.34	2077.12	0.78	28.34	N77° 52' 37"W
AY → AZ	778.99	2445.72	18.25	775.70	N68° 16' 05"W
AZ → B	101.02	2629.95	2.20	101.01	N56° 55' 22"W
B → BA	285.94	4548.24	3.60	285.89	N72° 57' 59"W
BA → BB	226.85	732.03	17.76	225.94	N68° 56' 30"W
BB → BC	485.79	1152.90	24.14	482.20	N36° 20' 43"W
BC → BD	346.10	8015.15	2.47	346.07	N25° 17' 20"W

Long Cane Road Line Table		
Line Segment	Length	Bearing
BD → BE	194.73	N44° 43' 03.95"W
BE → BF	518.01	N44° 53' 10.49"W
BF → BG	344.33	N44° 26' 23.67"W
BG → BH	849.59	N44° 42' 50.79"W
BH → BI	626.64	N44° 37' 17.93"W
BI → BJ	771.64	S44° 44' 47.62"E

Long Cane Road Curve Table					
Line Segment	Length	Radius	Delta	Chord Length	Chord Direction
BJ → BK	435.19	2506.28	9.95	434.65	N49° 31' 37"W
BK → BL	380.11	2619.98	8.31	379.78	N57° 40' 28"W

Long Cane Road Line Table		
Line Segment	Length	Bearing
BL → BM	512.95	N62° 25' 19.49"W
BM → BN	948.39	N62° 33' 09.34"W

Long Cane Road Curve Table					
Line Segment	Length	Radius	Delta	Chord Length	Chord Direction
BN → BO	1314.60	5889.45	12.79	1311.88	N55° 37' 20"W

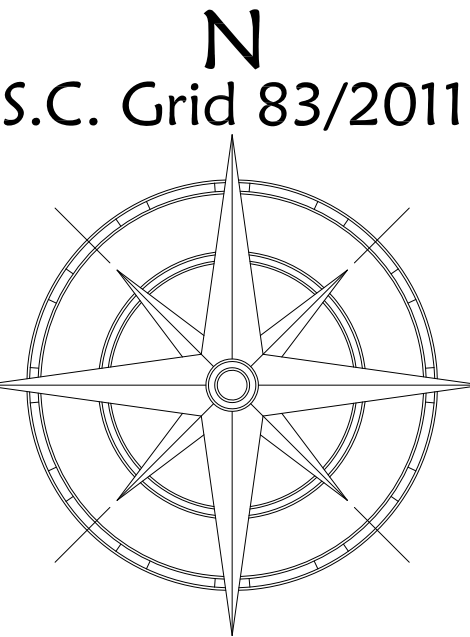
Long Cane Road Line Table		
Line Segment	Length	Bearing
BO → BP	1579.12	N49° 35' 19.81"W
BP → BQ	441.88	N49° 41' 36.46"W

Long Cane Road Curve Table					
Line Segment	Length	Radius	Delta	Chord Length	Chord Direction
BQ → BR	269.09	2754.74	5.60	268.98	N47° 22' 54"W
BR → BS	1361.23	1486.94	52.45	1314.19	N36° 38' 54"W
BS → BT	382.86	3102.01	7.07	382.61	N11° 49' 52"W
BT → BU	293.68	1660.70	10.13	293.29	N24° 08' 20"W
BU → BV	319.36	2390.25	7.66	319.12	N31° 41' 23"W
BV → BW	316.36	4640.90	3.91	316.30	N41° 26' 36"W
BW → BX	842.86	1922.62	25.12	836.13	N47° 23' 07"W

Long Cane Road Line Table		
Line Segment	Length	Bearing
BX → BY	144.88	N61° 58' 24.83"W

Tie Monuments			
Monument	Northing(ift)	Easting(ift)	Description
Tie Mon. 5	744026.85	1742690.16	1" rebar w. cap (s)
Tie Mon. 6	744913.78	1741033.95	1" rebar w. cap (s)

Tie Line Table		
Line Segment	Length	Bearing
TM5 → BK	44.25	S84° 07' 07.40"E
TM6 → BN	84.13	S80° 34' 58.88"E



RE-ESTABLISHMENT OF A PORTION OF THE COMMON  
BOUNDARY OF EDGFIELD AND SALUDA COUNTIES

FIELD WORK AND MAP BY  
SOUTH CAROLINA GEODETIC SURVEY  
1000 ASSEMBLY ST; 4TH FLOOR  
COLUMBIA, SC 29201  
803.734.3793  
<http://rfa.sc.gov/geodetic>

I hereby state that to the best of my  
professional knowledge, information, and  
belief, the survey shown hereon was made  
in accordance with the requirements of  
the Standards of Practice Manual for  
Surveying in South Carolina, and meets or  
exceeds the requirements for a Class C  
survey as specified therein.

PROF. LAND SURVEYOR NO. 43366  
JACOB JORDAN BRAXTON

Date: December 7, 2023  
\*Date Reflects Final Day of Field Work