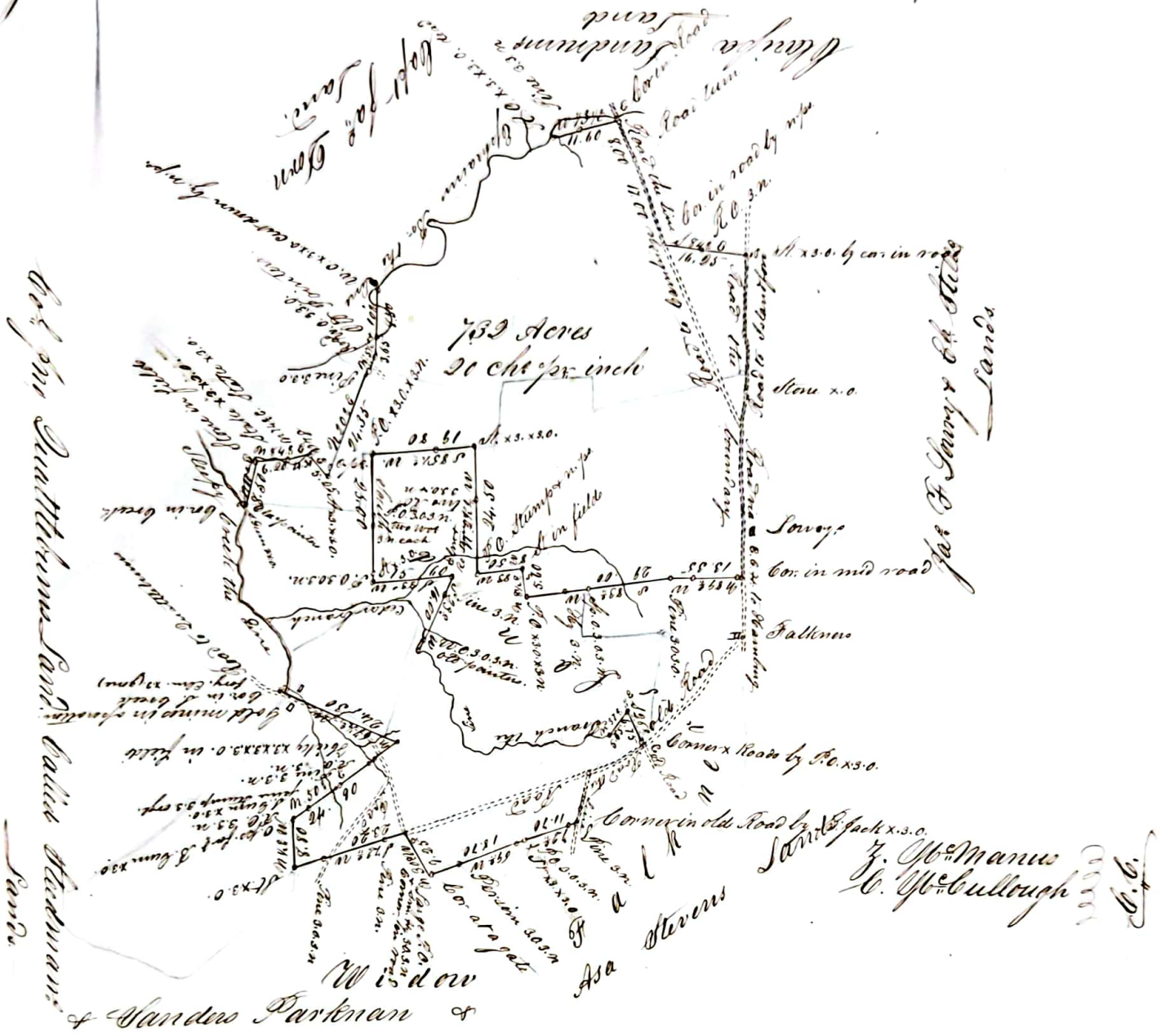


Dr John Sandrum Land

Said Plat



South Carolina.

Pursuant to a warrant from His Excellency G. Bacon Esq. U.S. & C. Dist. dated the 7<sup>th</sup> day of Nov<sup>r</sup> 1853. I have admeasured & laid out unto Dr John Sandrum the above delineated tract of land containing seven hundred & thirty two (732) Acres, situate in Edge<sup>field</sup> Dist. & State aforesaid on Sleepy Creek of Stevens Creek of Savannah River adjoining lands of Mr Falkner & Parkman & Asa Stevens & F. Levy, Elijah Steel & Clarissa Sandrum. Jas Down & Co of Quattabum and land called Steadmans being lands heretofore granted & are now surveyed for the purpose of obtaining a new Grant and hath such boundings form & marks as the above plat represents.

Surveyed for me the 17<sup>th</sup> day of November 1853.

Received 23<sup>rd</sup> Dec 1853.

His Excellency G. Bacon  
U.S. & C. Dist.

A. R. Able D. S.

