

- Sheet No. 1 Title Sheet
- " 1-A Moving Items
- " 2 Typical Sections of Improvement
- " 3 Intersections Std
- " 4 Superelevation "
- " 5 Traffic Control Devices
- " 6 Highway Construction Sign
- " 7-18 Plan & Profile
- " 19-20 R. C. Box Culverts
- " 21-50 Cross Sections

SOUTH CAROLINA
STATE HIGHWAY DEPARTMENT
COLUMBIA

PLAN AND PROFILE OF PROPOSED STATE HIGHWAY

DKT. NO. 41.335
F.A.P. NO. F-258(9)
S. C. RT. 121
FROM RD. 37 TO EDGEFIELD CO. LINE
SALUDA COUNTY

SCALES: PLAN AND PROFILE 1 INCH = 100 FEET HORIZONTAL; 1 INCH = 10 FEET VERTICAL

DKT. NO. 41.335, F.A.P. NO. F-258(9)
STA. 351+00.0 TO STA. 570+66.6
(See Sheets 7 thru 18)



SUMMARY OF ESTIMATED QUANTITIES

EARTHWORK	
Clearing and Grubbing within Roadway	Nec.
Clearing and Grubbing of Borrow and Material Pits	2.0 Acres
Unclassified Excavation	67,366 CY.
Overhaul	463,879 CY.H.M.
Selected Material for Shoulders	9,805 CY.
BASE COURSE	
Earth Type Base Course (Pit Material)	18,251 CY.
Scarifying, Mixing, Bedding, Shaping and Reshaping	126,536 M.S.Y.
Earth Type Sub-Base Course (Pit Material)	6,780 CY.
SURFACING	
Bituminous Surfacing (Double Treatment) Types 1 thru 6	63,078 S.Y.
STRUCTURES	
Class "A" Concrete	64.1 CY.
Reinforcing Steel	8,913 Lbs.
15" R. C. Culvert Pipe	84 L.F.
18" " " " "	88 L.F.
24" " " " "	216 L.F.
30" " " " "	88 L.F.
72" " " " "	208 L.F.
15" Relaid Pipe Culvert	68 L.F.
18" " " " "	264 L.F.
4" Pipe Underdrain	139 L.F.
800 L.F.	800 L.F.
INCIDENTALS	
Reset Fences	11,195 L.F.
Rip Rap	40 Tons
Alt. # 1 15" R. C. Culvert Pipe	280 L.F.
" # 2 " C. M. Culvert Pipe, Type "B", Gage # 16	280 "
" # 3 " Corrugated Aluminum Alloy Culv. Pipe, Gage # 16	280 "
" # 1 18" R. C. Culvert Pipe	160 "
" # 2 " C. M. Culvert Pipe, Type "B", Gage # 16	160 "
" # 3 " Corrugated Aluminum Alloy Culv. Pipe, Gage # 16	160 "
" # 1 24" R. C. Culvert Pipe	20 "
" # 2 " C. M. Culvert Pipe, Type "B", Gage # 16	20 "
" # 3 " Corrugated Aluminum Alloy Culv. Pipe, Gage # 16	20 "
Stone Underdrain (12" x 10"), Aggregate # 9	800 L.F.

NOTE: SEE SHEET NO. 1-A FOR MOVING ITEMS

CONVENTIONAL SIGNS

State Line	Trolley Poles
County Line	Power Poles
City or Town Limits	Telephone or Telegraph Poles
Property Line	Marsh
Fence	Trees
Retaining Wall	Brush
Warning Road	Stumps
E and R.O.W. Lines of	Buildings
Proposed Road	Bridge
Railroad	Concrete Box Culvert
Levee or Embankment	Pipe Culvert
Guard Rail	Drop Inlet and Culvert
Point of Intersection (P. I.)	Hub on Center Line

LEGEND

PROPOSED PROJECT	PAV	GR
OTHER ROADS		

Net Length of Roadway =	4.160	Miles
Net Length of Bridges =	—	Miles
Net Length of Project =	4.160	Miles
Length of Exceptions =	—	Miles
Gross Length of Project =	4.160	Miles

Equalities in Stationing
None

Note: All workmanship and material on this project to conform with South Carolina State Highway Department Standard Specifications for Highway Construction dated Nov. 1, 1955

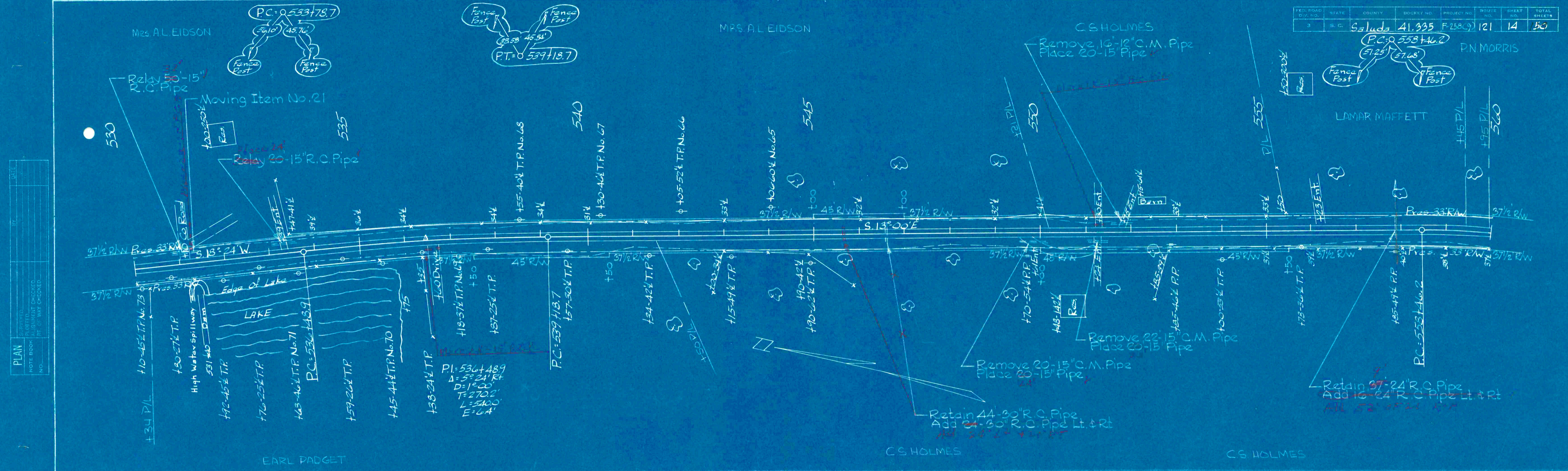
APPROVED: *[Signature]* 6/16/64
STATE HIGHWAY ENGINEER DATE

DEPARTMENT OF COMMERCE
BUREAU OF PUBLIC ROADS

RECOMMENDED FOR APPROVAL:

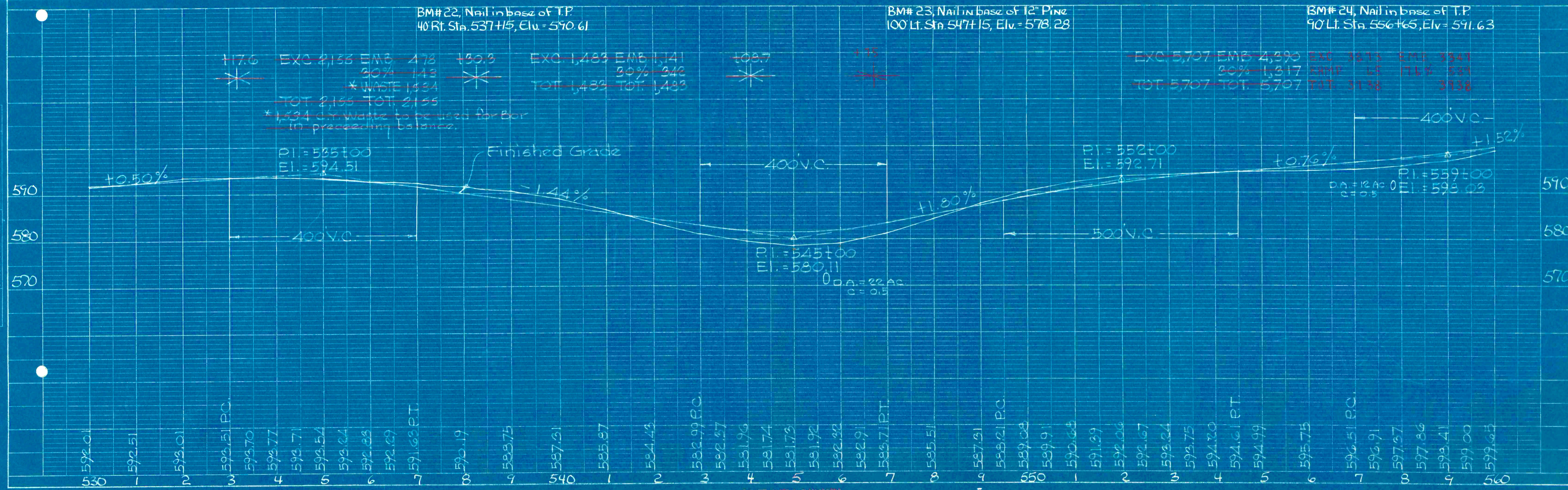
DISTRICT ENGINEER	DATE
APPROVED:	
DIVISION ENGINEER	DATE

FED. ROAD DIST. NO.	STATE	COUNTY	PROJECT NO.	ROUTE NO.	SHEET NO.	TOTAL SHEETS
3	S. C.	Saluda	41.935	F-258(C)	14	50



PLAN
 DRAWN BY
 CHECKED BY
 DATE
 NOTE BOOK NO.
 DATE CHECKED
 BY

PROFILE
 DRAWN BY
 CHECKED BY
 DATE
 NOTE BOOK NO.
 DATE CHECKED
 BY



Saluda Co
 Rt. 19

