



Musings on the South Carolina Economy

Robert T. Carey, Ph.D.

Senior Lecturer, Department of Political Science

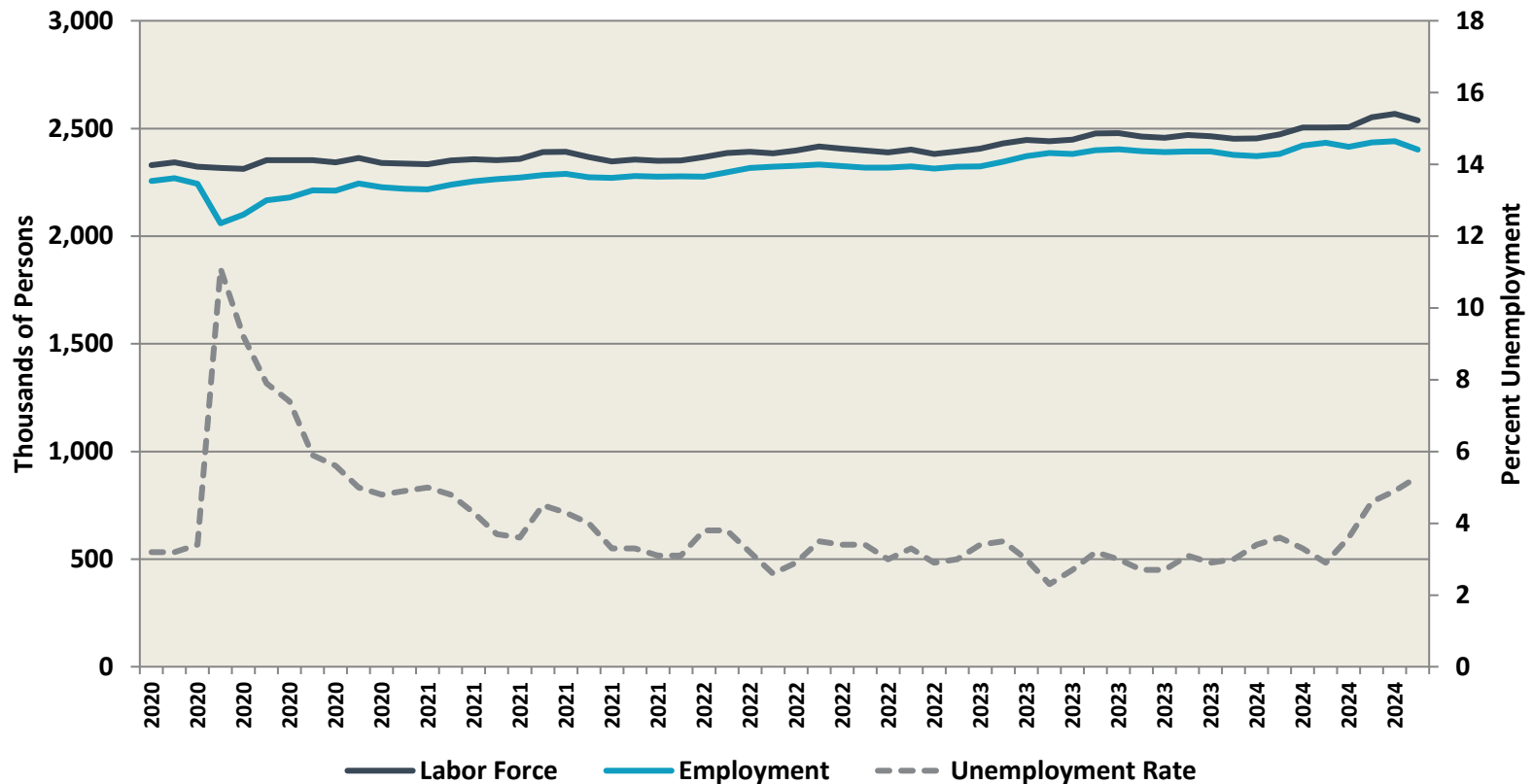
Director, [Clemson University Regional Economic Analysis Laboratory](#)

SC Board of Economic Advisors

October 14, 2024

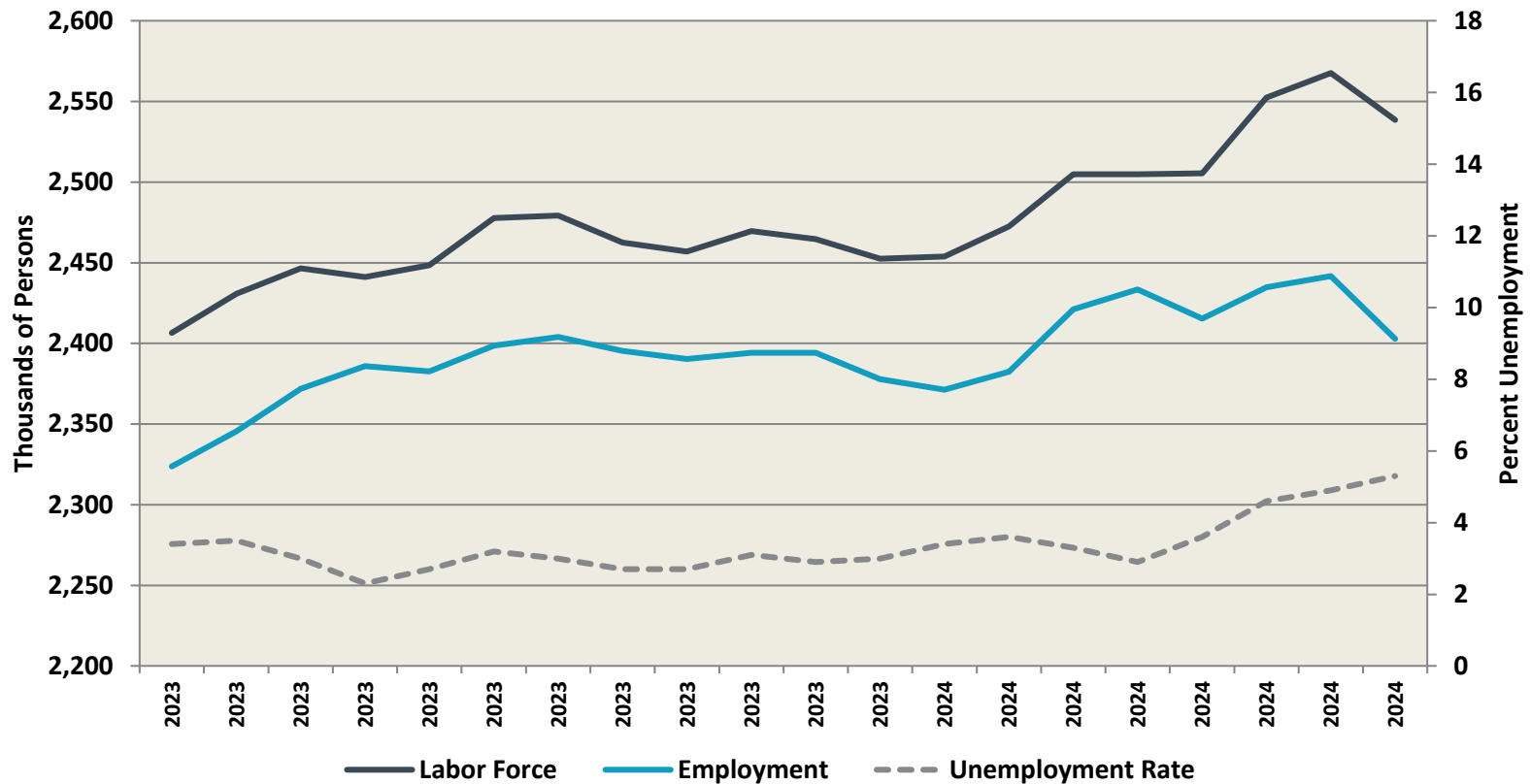


Employment vs. Labor Force Since 2020



UNEMPLOYMENT RATE (SC)

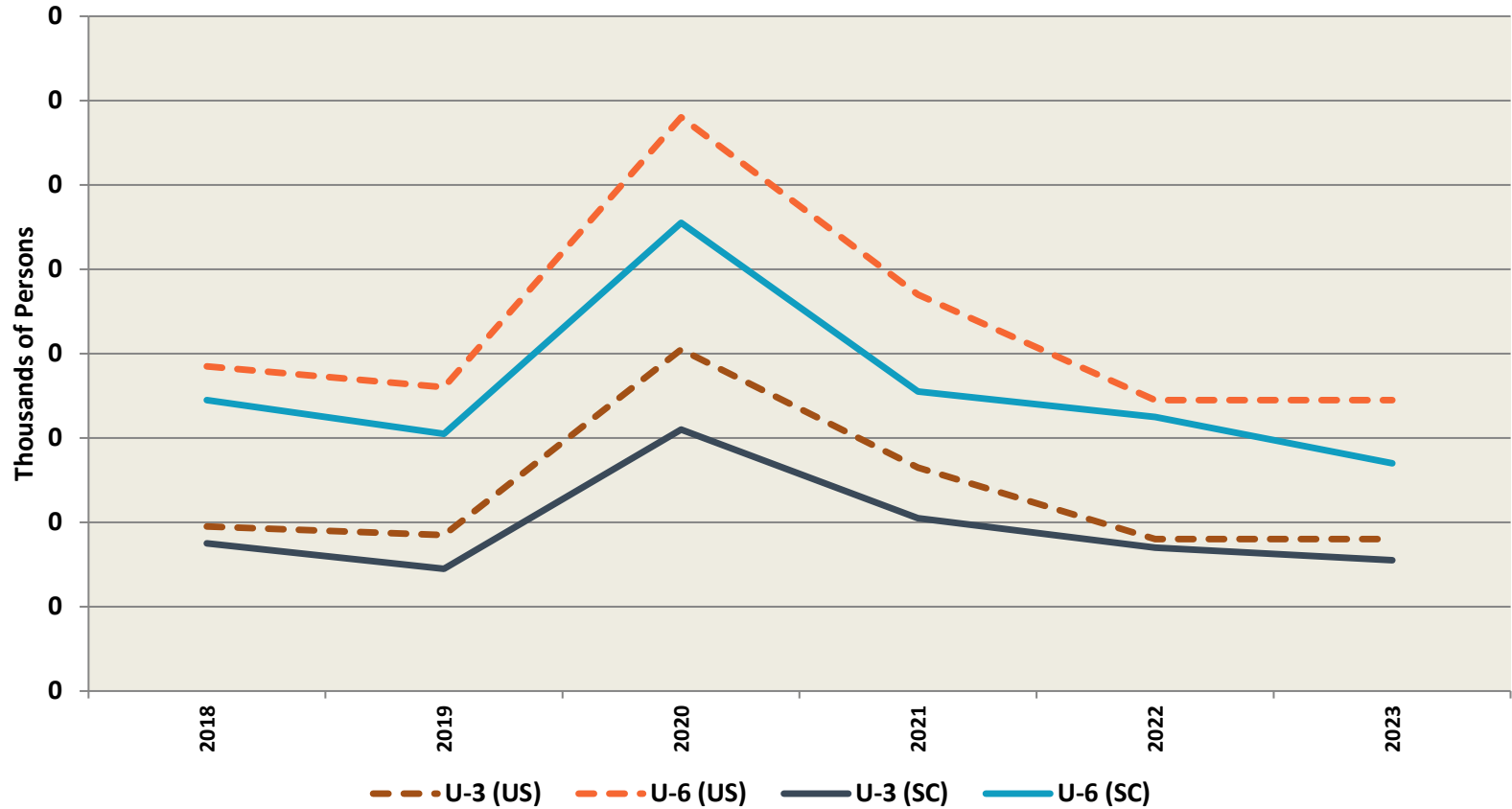
Employment vs. Labor Force Since 2023



UNEMPLOYMENT RATE (SC)

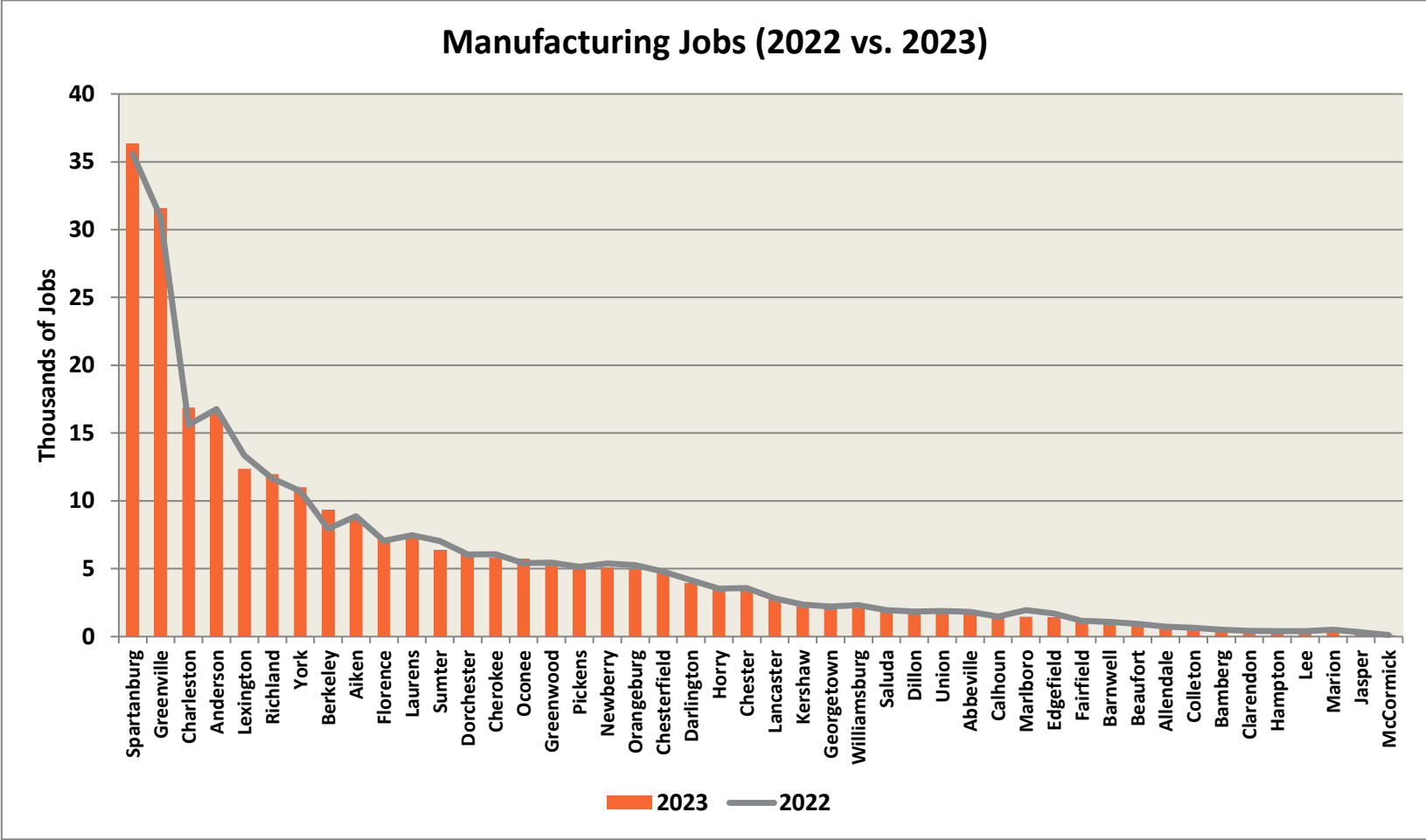


U-3 vs. U-6



UNEMPLOYMENT RATE (SC vs. US)

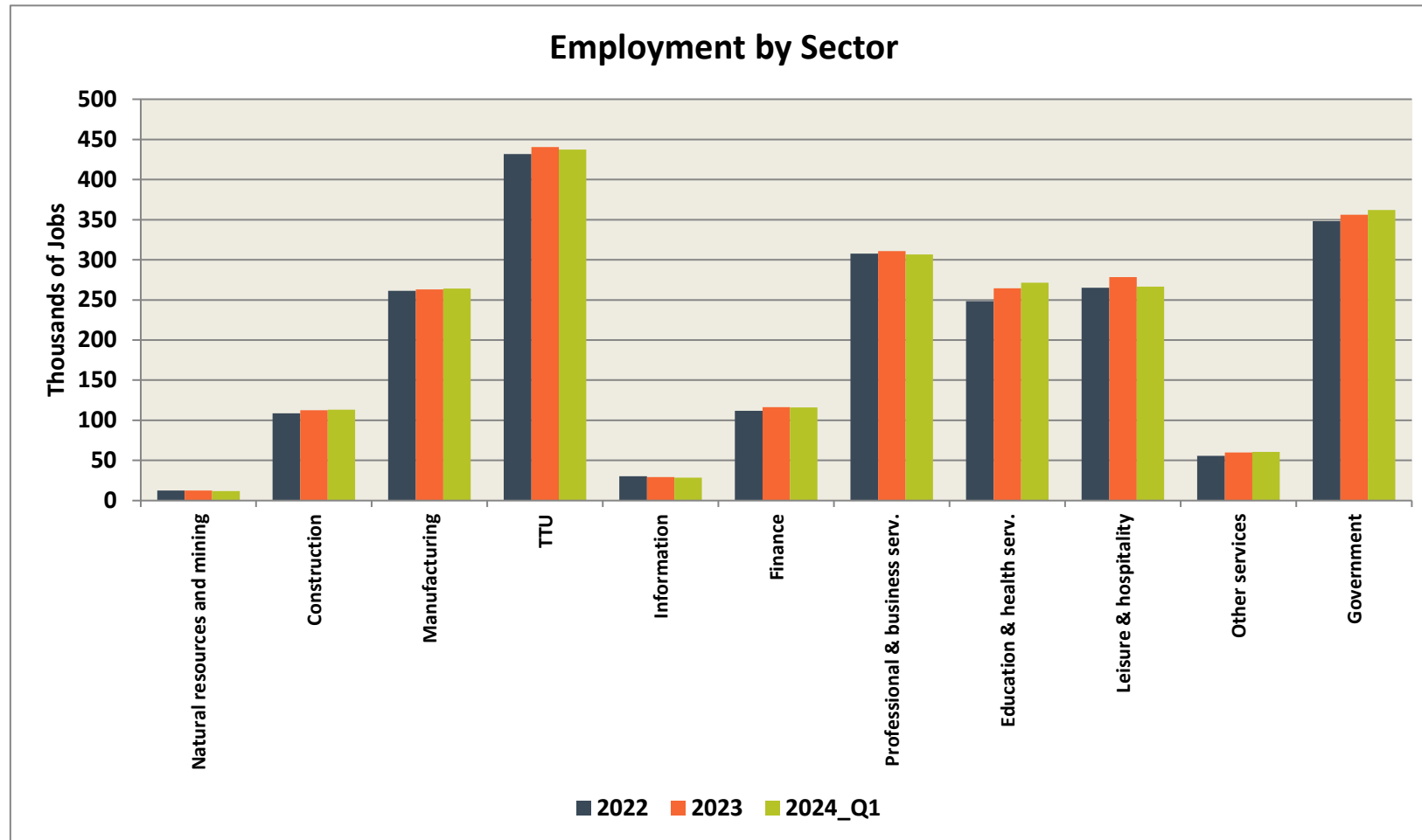
MANUFACTURING EMPLOYMENT BY COUNTY



BEA CEW

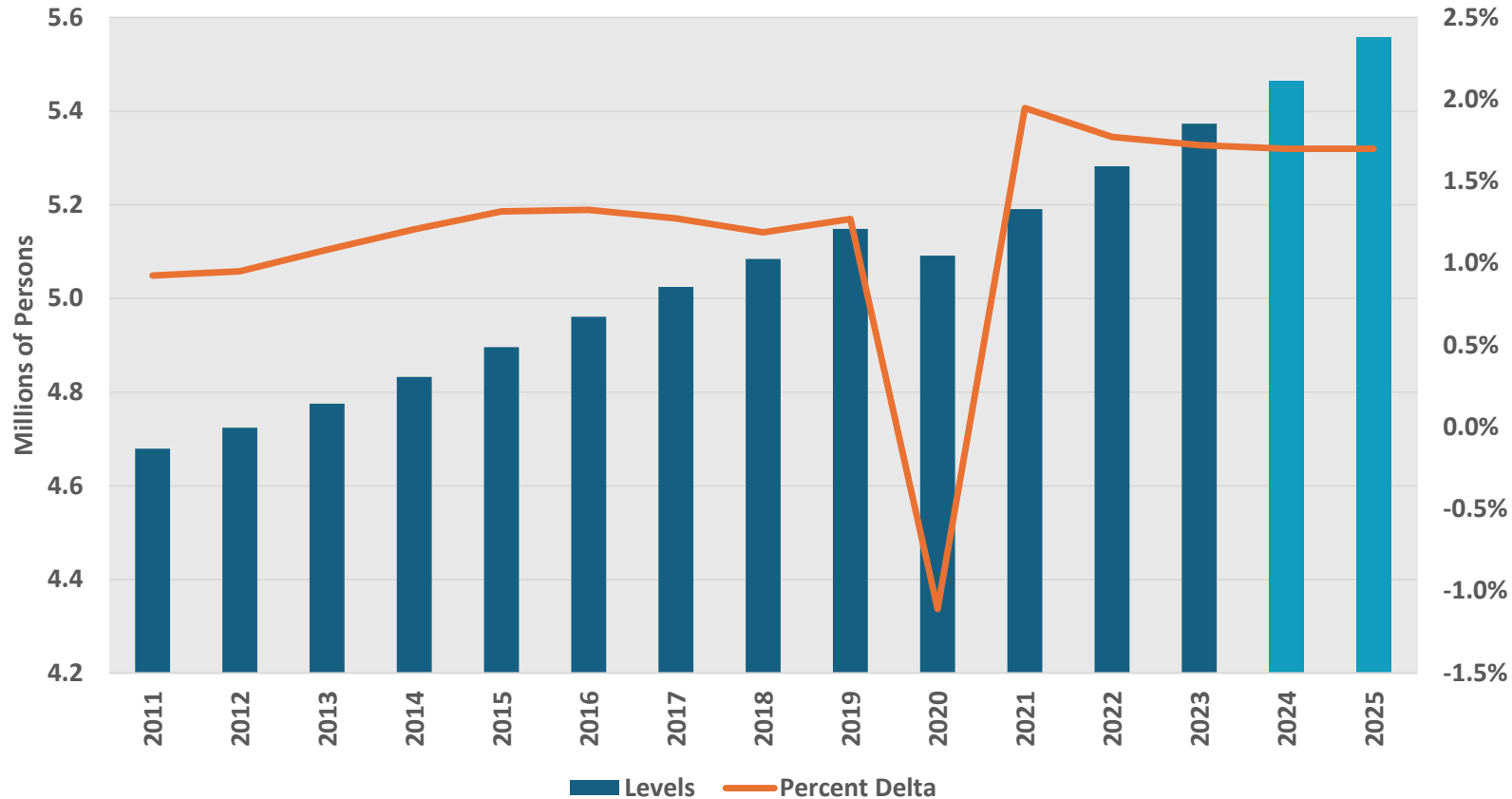


EMPLOYMENT BY SECTOR (STATEWIDE)



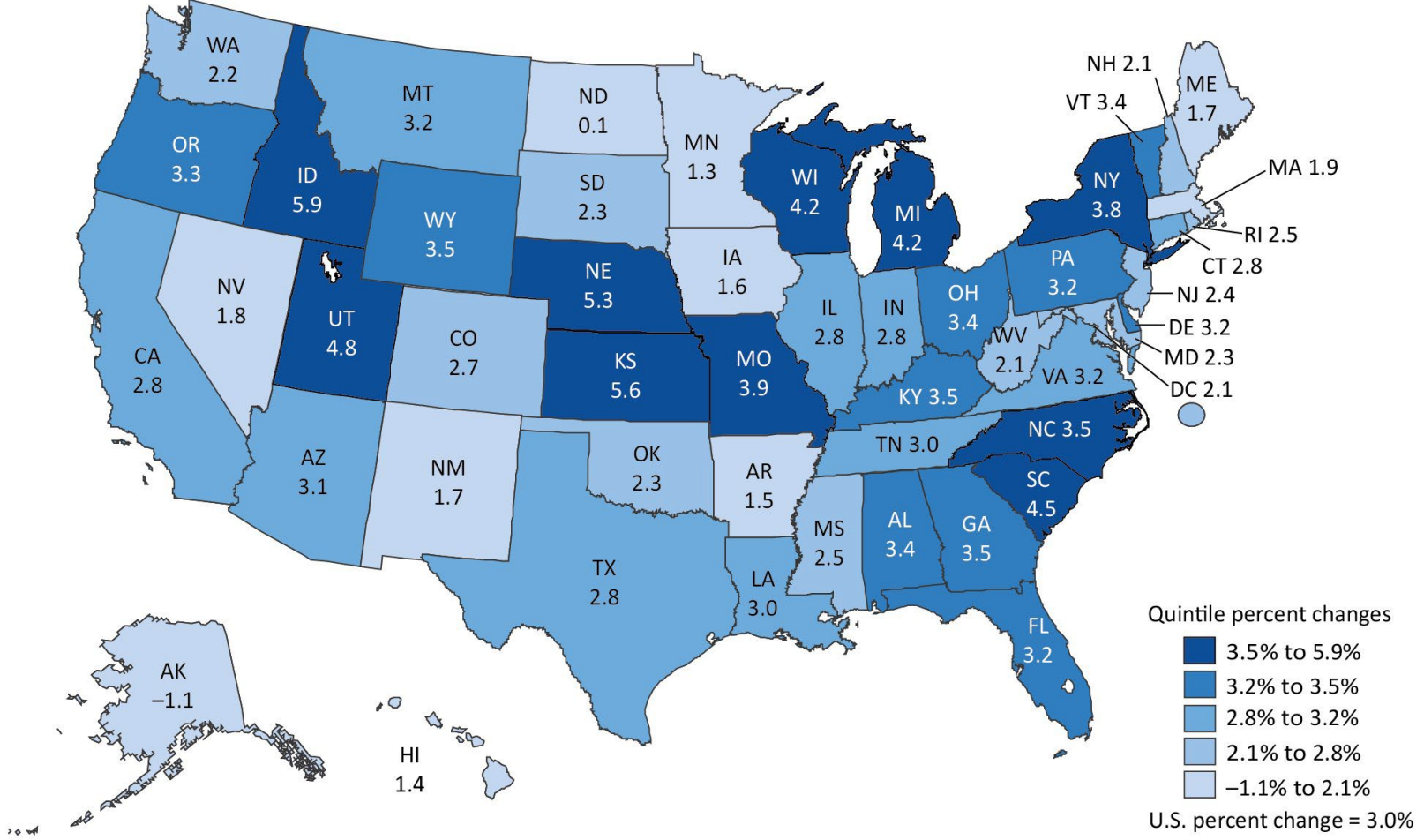
BEA CEW

SC Population + Projections



POPULATION
GROWTH

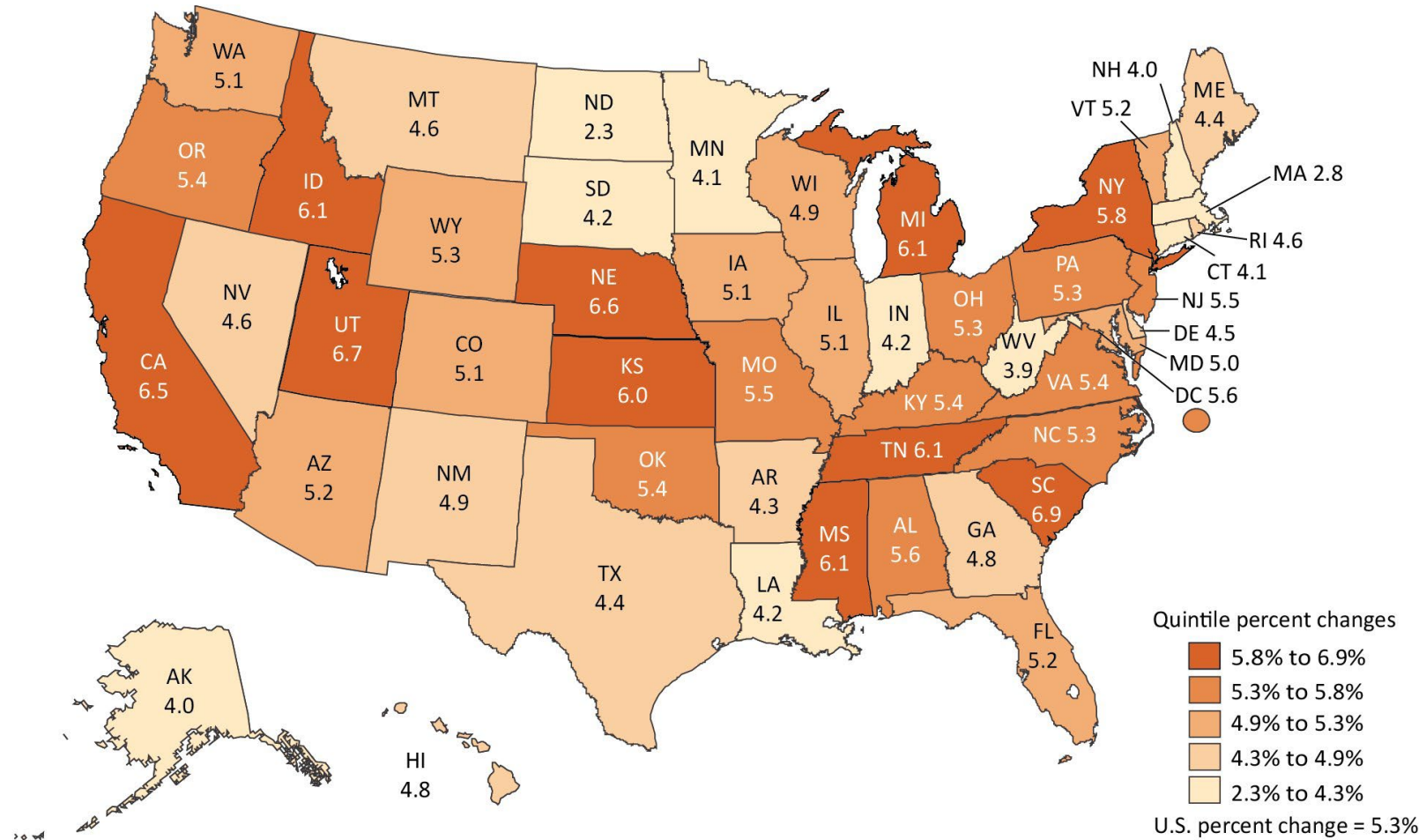
Real GDP: Percent Change at Annual Rate, 2024:Q1–2024:Q2



U.S. Bureau of Economic Analysis



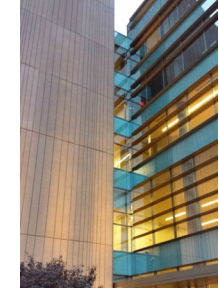
Personal Income: Percent Change at Annual Rate, 2024:Q1–2024:Q2



U.S. Bureau of Economic Analysis



The Clemson University Regional Economic Analysis Laboratory (CU-REAL) conducts public policy and economic and fiscal impact analysis for public, private, and non-profit sector clients. CU-REAL is a unit of the Department of Political Science, College of Behavioral, Social & Health Sciences.



Email: carey2@clemson.edu
Web: cu-real.com
Twitter: [@ClemsonREAL](https://twitter.com/ClemsonREAL)