

RECORDED
In Book of Pages 94

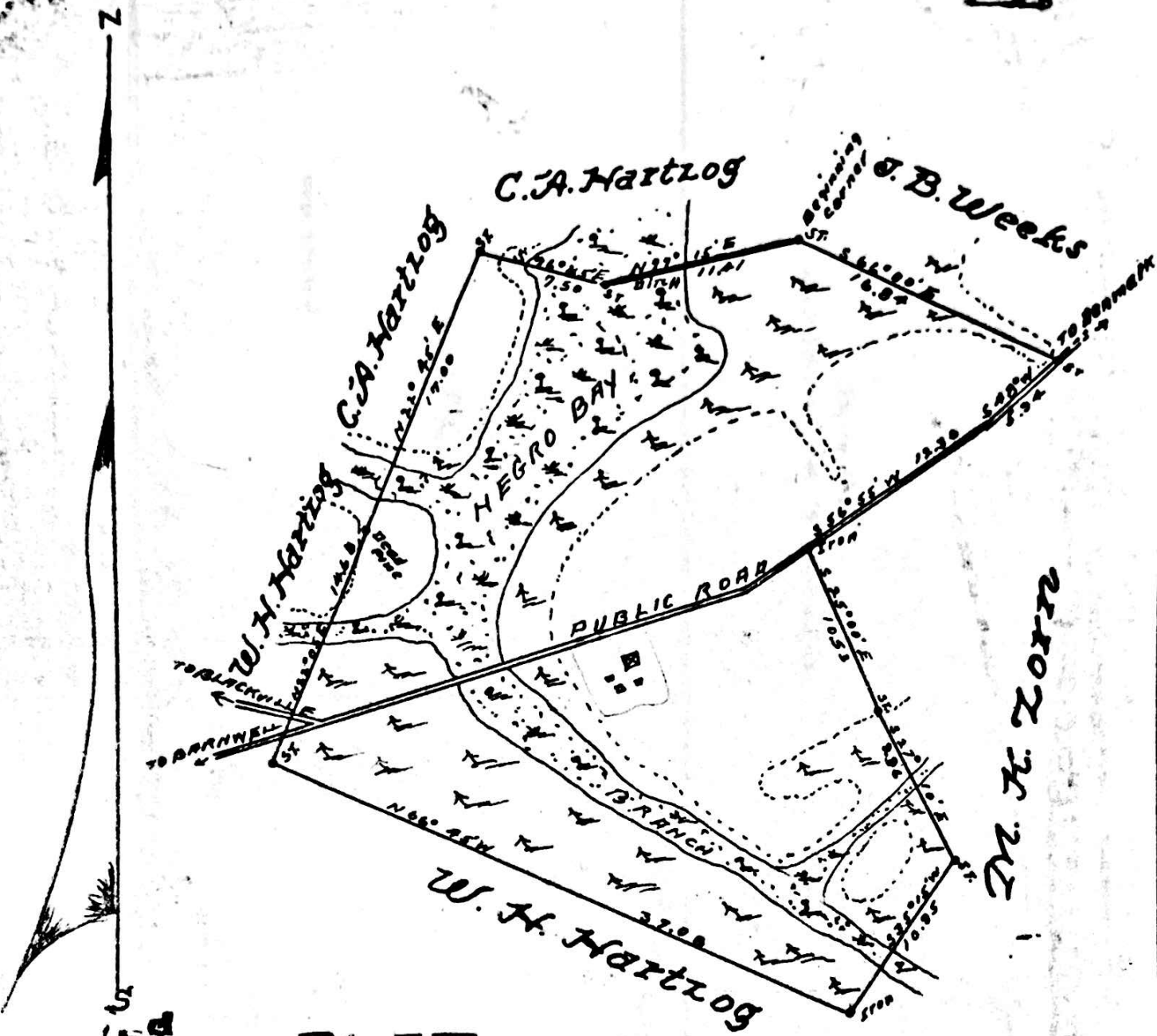
JUL 20 1866

CLERK OF COURT,
BARNWELL COUNTY, S. C.

PLAT
OF LAND OWNED BY
C. A. Hartzog
NEAR HILDA, BARNWELL COUNTY, S. C.
Content 121.00 Acres
1/4 20 CHS.
J. V. Mace, Sur.

APR 10 1934

PLAT APPROVED
FOR LOAN



M. H. LOTT