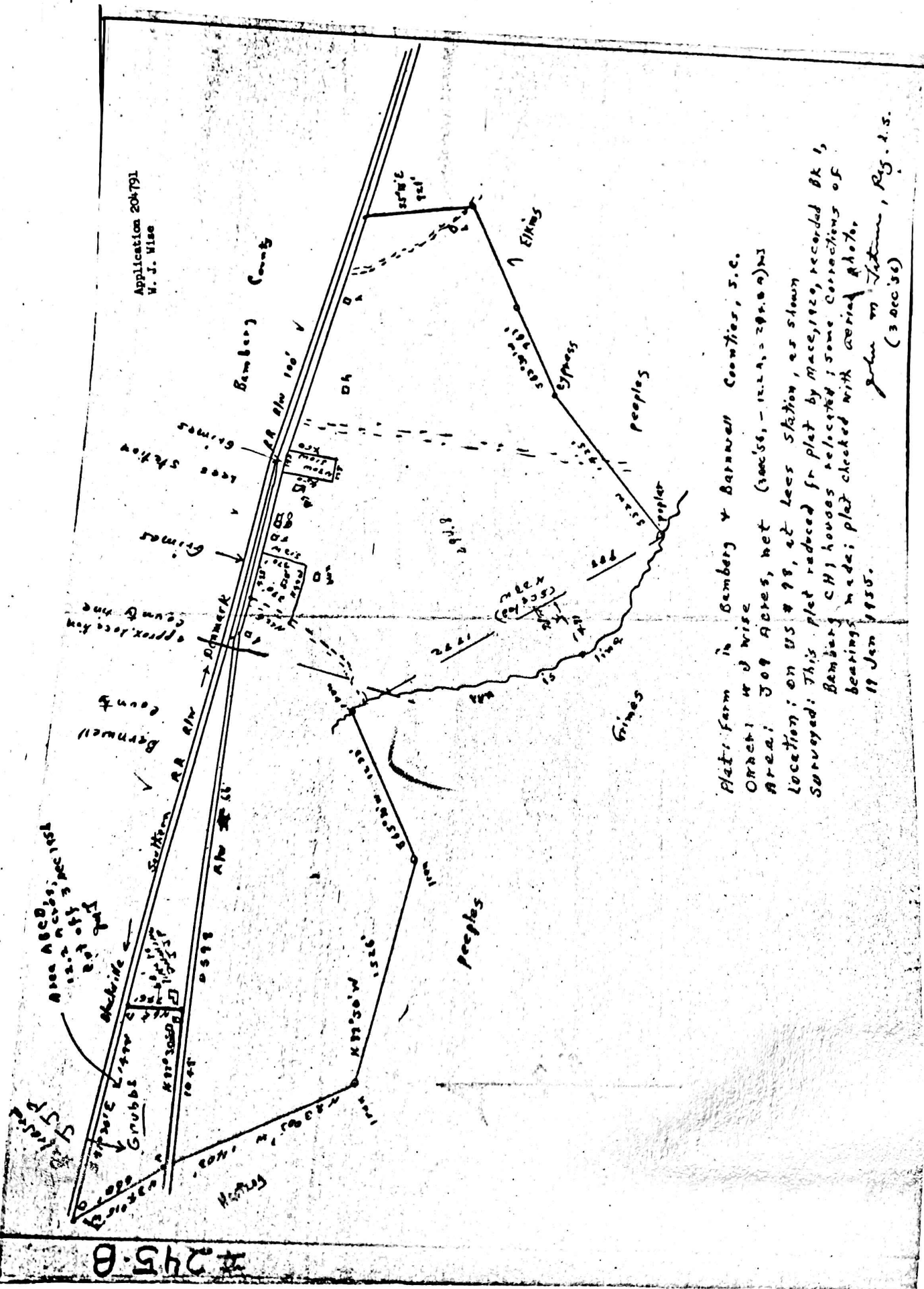


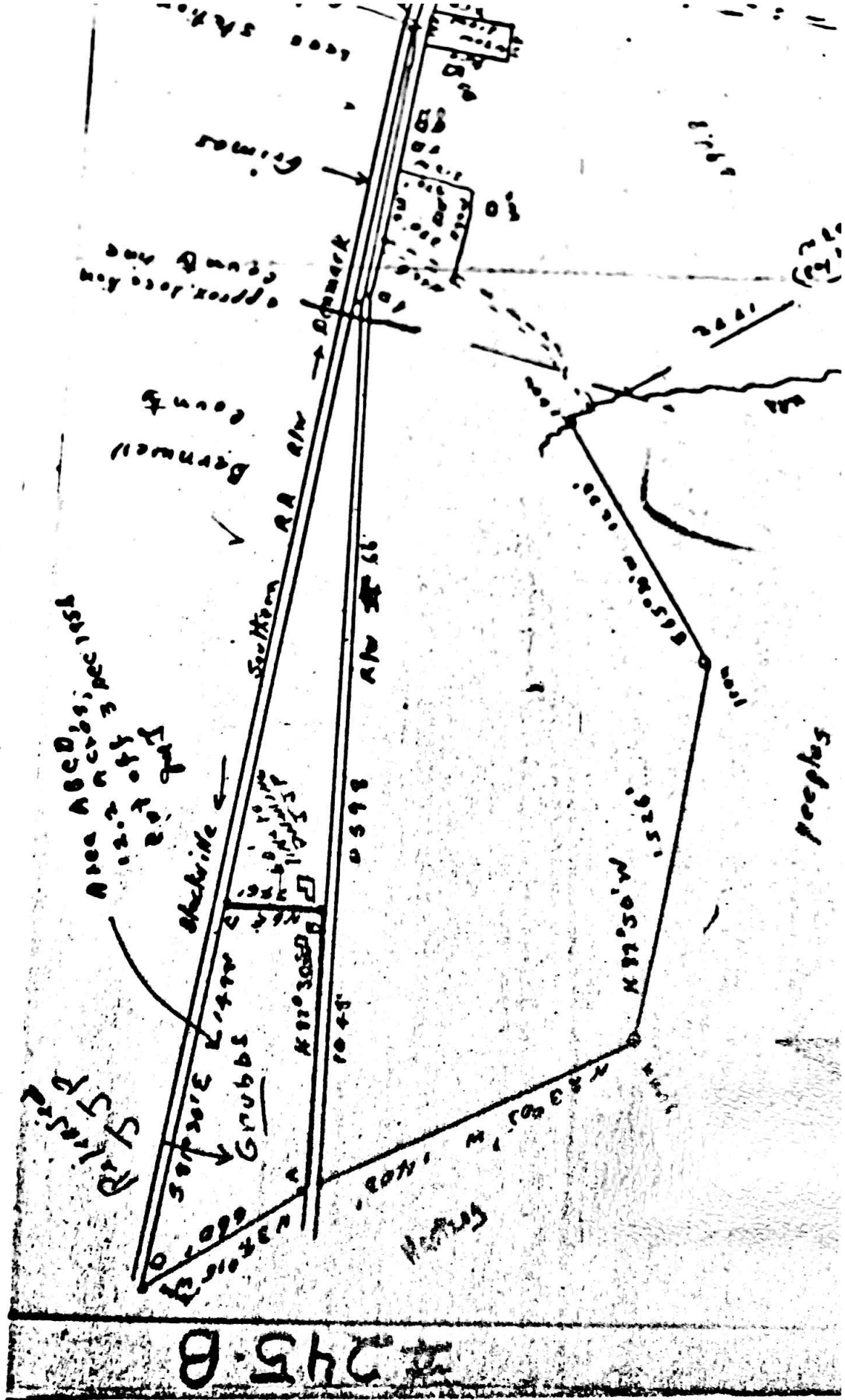
#245-B

Application 204791
W. J. Wise



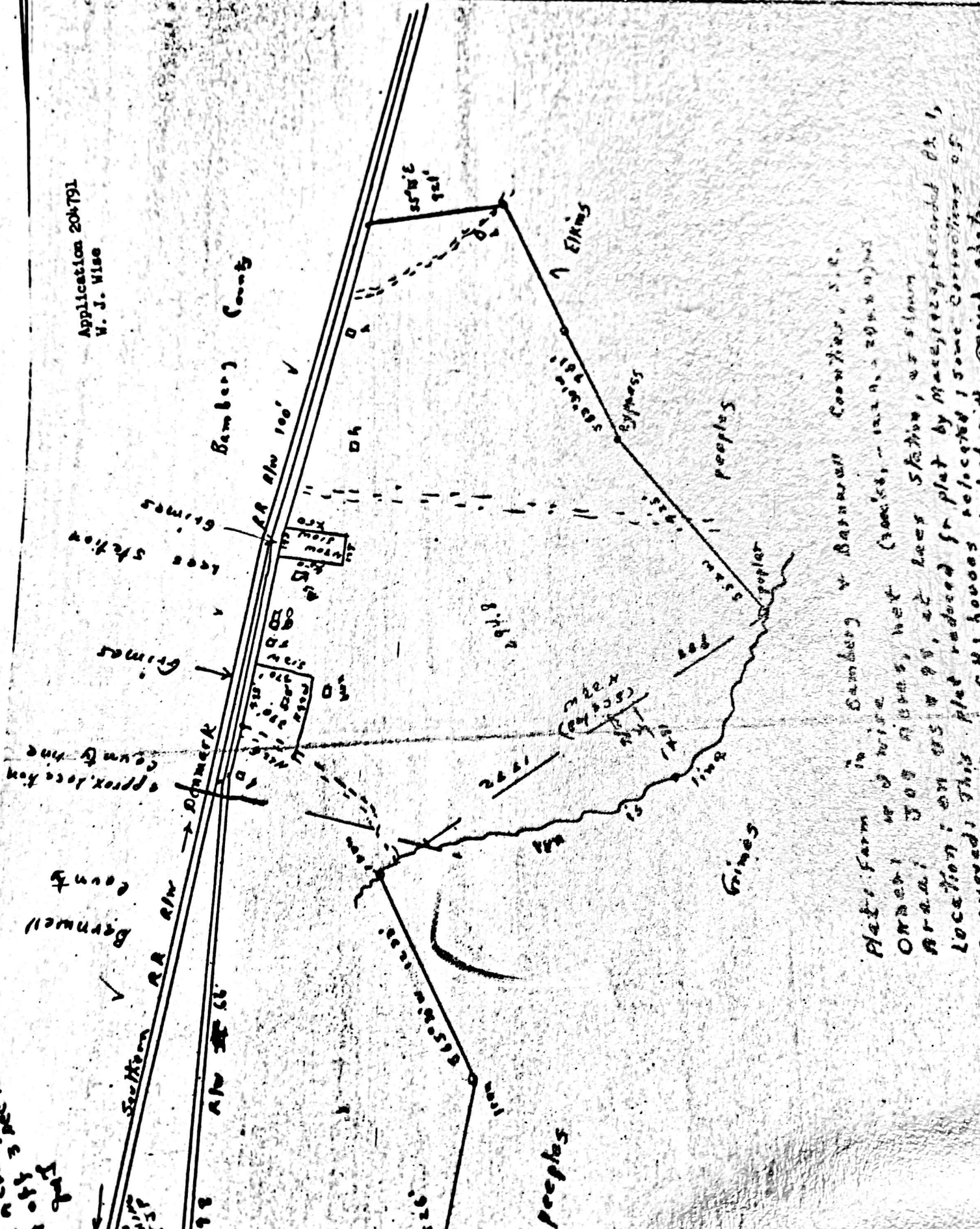
Plat: Farm in Bamberg & Barnwell Counties, S.C.
 Owner: W. J. Wise
 Area: 309 Acres, net (300'56" - 122.24" = 208.02) ac
 Location: on US # 98, at Lees Station, as shown
 Surveyed: This plat reduced fr plat by Mace, 1929, recorded BK 1,
 Bamberg CH) houses relocated; some corrections of
 bearings made; plat checked with aerial photo.
 19 Jan 1955.

John W. Titman, Reg. L.S.
 (300'56")



245-B

Application 204791
W. J. Wise



Plat Farm in Bamberg & Berneville Counties, S.C.
ORIGIN: W. J. Wise, plat (checked, - 12.2.9. - 204.791)
AREA: 707 ACRES, net BEARS STATION, as shown
LOCATION: on W 51 W 9 S, at Bears Station, as shown
SURVEYED: This plat reduced fr plat by MacCallister, recorded Ch 1,
Bamberg, CH; books relocated; some consisting of
Peoples, CH; books relocated; plat checked with aerial photos