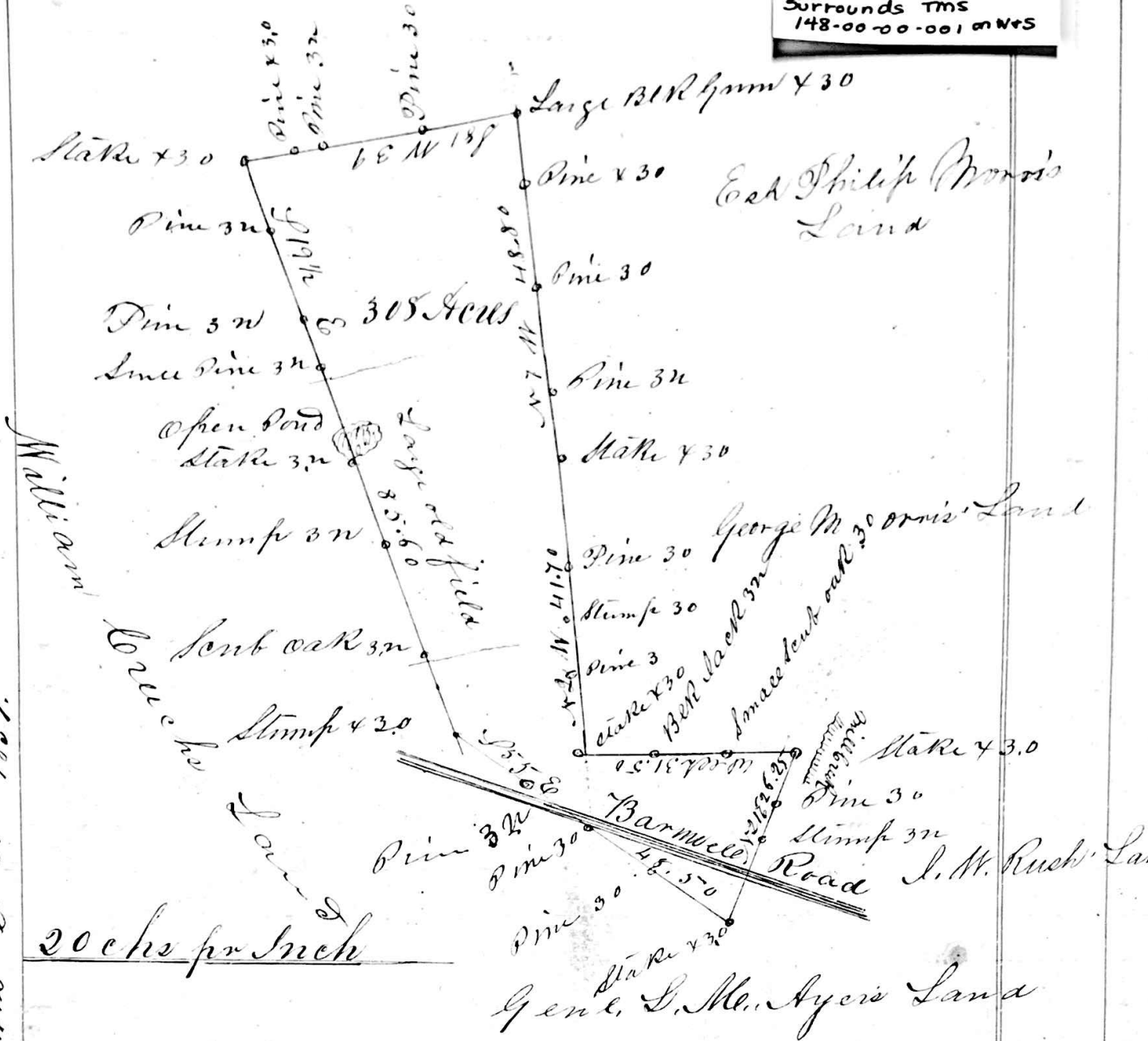


S. H. RUSH
308 AC.
Great Salkhatchi
Surrounds TMS
148-00-00-001 on W+S

J. W. Rush's Land



Sent to Columbia by mail to Surveyor General Office and also
 five dollars sixty two and half cents (5.62 1/2) for fee, The 28th day of March 1857
 Returned Grant to J. H. Rush 14th Decr 1857.

South Carolina

Pursuant to a warrant from James D
 Davis Commissioner of Location for the District of Barnwell
 dated 2nd day of February A. D. 1857, I have resurveyed
 and Laid out unto S. H. Rush a track of land containing
 three hundred and eight acres, Situated in Barnwell Dist
 on the North side of Great Salkhatchie and hath such
 shape marks & boundaries as the above Plat Represents
 Resurveyed the 25th day of February A. D. 1857
 P.S. The above land has originally }
 been granted but is now surveyed for } L. B. Harry
 The purpose of obtaining a new grant }

L. B. H.

Recorded the 17th day of March 1857