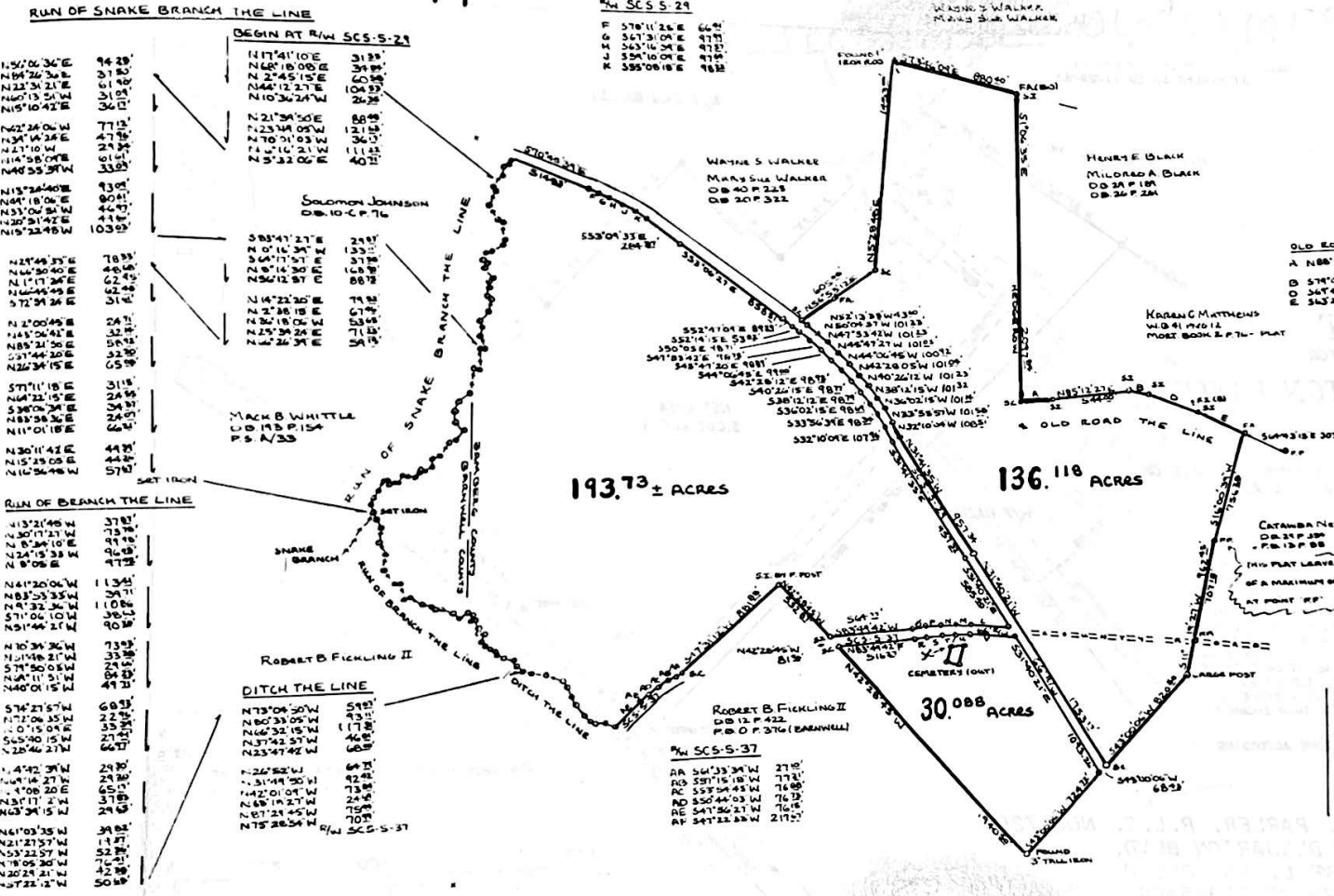


Plot Cab A Slide 221 pg 5-B

Collins Lumball, Jr.
P.O. Box 535
Afton, SC 29010
10.00 pd.



OLD ROAD THE LINE

A	N88°12' E	200.0'
B	S74°04'12" E	155.5'
C	S62°22'57" E	391.0'

FILED FOR RECORD
95 MAY 23 11:22:27
BARNWELL COUNTY
SCALE 1" = 660'
S.C. - SET CONCRETE
S.C. - SET 7/8 GALVANIZED
S.C. - SET 1/2" GALVANIZED
P.L. - POUND NAIL 18" IN
P.L. - POUND 7/8" IRON PIPE
L.S. - BULLDOG
L.S. - BENTONITE
L.S. - OLD WITHES MARKS

PLAT SCS-5-37

1	N78°12'31" W	271.5'
2	S72°28'30" W	101.5'
3	S81°31'07" E	101.5'
4	S84°30'07" E	101.5'
5	N64°35'24" E	40.5'
6	N68°55'48" E	78.5'
7	S58°48'31" E	78.5'
8	S65°42'57" E	319.5'

THE LARGEST (S1) CONTAINS 0.231 ACRES
AND IS LOCATED S8°40'05" W 874' FROM THE
NW CORNER BETWEEN NW LINE 1 & LINE 4.
CONCRETE MARK SET AT ALL CORNERS & ITS
DIMENSIONS BEGINNING AT POINT 'X' ARE
N87°00'00" E 662' S15°03'42" W 132' /
N71°31'31" W 90' N11°00'00" E 100'

PLAT OF PROPERTY OF SCOTT WOODLANDS

REFERENCE: DEED BOOK 95 PAGE 103
PLAT BOOK 5 PAGE 48

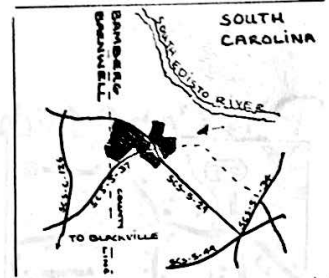
BARNWELL COUNTY 12.99 ± ACRES
BAMBERG COUNTY 347.45 ACRES

TOTAL AREA = 359.94 ACRES ±

I HEREBY CERTIFY THE ERROR OF CLOSURE IS 1/15,000"

DATE: 7 MAY 1996

[Signature]
ROY L. GREEN PLS #7403B
P.O. #446 ESTILL, SC 29918
PHONE: 803-625-3570



1310
24 W
10.10
1

BUSINESS RECORDS CORPORATION

Plot A Slide 291 pg 5-B

RUN OF SNAKE BRANCH THE LINE

BEGIN AT R/W SCS-5-21

N56°06'36"E 94.28'
 N84°26'36"E 37.50'
 N22°31'21"E 61.90'
 N60°13'51"W 31.09'
 N15°10'42"E 36.17'

N42°24'06"W 77.12'
 N39°14'24"E 47.96'
 N27°10'W 29.34'
 N14°58'04"E 61.61'
 N48°55'37"W 33.09'

N13°24'40"E 93.01'
 N49°18'06"E 80.91'
 N33°06'51"W 46.97'
 N20°51'42"E 47.18'
 N15°22'48"W 103.09'

N29°49'33"E 78.33'
 N66°30'40"E 48.66'
 N1°17'24"E 62.45'
 N66°45'45"E 62.45'
 S72°59'24"E 31.18'

N2°00'45"E 24.71'
 N43°06'42"E 32.44'
 N85°21'58"E 58.92'
 S57°44'20"E 32.30'
 N26°34'15"E 65.58'

S71°11'18"E 31.15'
 N64°22'15"E 24.55'
 S38°06'34"E 34.37'
 N83°38'36"E 24.07'
 N11°01'18"E 66.21'

N30°11'42"E 44.24'
 N15°25'05"E 44.24'
 N16°36'48"W 57.42'

N17°41'10"E 31.55'
 N68°18'08"E 34.84'
 N2°45'15"E 60.58'
 N44°12'27"E 104.53'
 N10°36'24"W 26.38'
 N21°39'50"E 88.48'
 N23°49'05"W 121.15'
 N70°01'03"W 36.17'
 N6°16'21"W 111.22'
 N5°32'06"E 40.11'

SALOMON JOHNSON
 D.B. 10-C.P. 76

S83°47'27"E 24.97'
 N0°16'34"W 139.11'
 S64°17'57"E 37.18'
 N8°14'30"E 168.18'
 N56°12'57"E 88.73'
 N14°22'20"E 79.12'
 N2°38'18"E 67.14'
 N36°18'06"W 53.65'
 N25°34'24"E 59.12'
 N6°26'39"E 59.12'

MACK B. WHITTLE
 U.D. 193 P. 154
 P.S. A/33

RUN OF BRANCH THE LINE

N13°21'48"W 37.81'
 N30°17'27"W 73.78'
 N8°34'10"E 99.90'
 N24°15'38"W 96.23'
 N8°05"E 97.22'

N41°20'06"W 113.41'
 N83°53'33"W 39.71'
 N9°32'36"W 110.86'
 S71°06'10"W 38.53'
 N51°44'27"W 90.18'

N70°34'36"W 73.03'
 N51°48'21"W 33.20'
 S79°50'08"W 29.61'
 N69°11'51"W 84.23'
 N40°01'15"W 49.71'

S74°27'57"W 68.93'
 N72°06'35"W 22.46'
 N0°15'09"E 33.31'
 S65°40'15"W 27.14'
 N28°46'27"W 66.17'

N44°42'39"W 29.30'
 N69°14'27"W 29.26'
 N9°08'20"E 65.17'
 N31°17'27"W 37.83'
 N63°39'15"W 29.65'

N61°03'35"W 39.82'
 N21°27'57"W 14.27'
 N53°22'57"W 52.21'
 N78°05'30"W 76.21'
 N20°29'21"W 42.31'
 N57°22'12"W 50.58'

DITCH THE LINE

N73°04'50"W 59.01'
 N80°33'05"W 93.11'
 N66°32'15"W 117.12'
 N37°42'57"W 46.01'
 N23°47'42"W 68.18'

N26°52'W 64.11'
 N31°49'50"W 92.42'
 N42°01'09"W 73.18'
 N68°18'27"W 24.58'
 N87°21'45"W 75.41'
 N75°20'54"W 70.11'

R/W SCS-5-37

SET IRON

SET IRON

SARASOTA COUNTY
 BARNWELL COUNTY

ROBERT B. FICKLING II

PROPERTY OF SCOTT L

Slide 201 pg 5-B

WAKE BRANCH

LINE
AT R/W SCS-5-29

R/W SCS-5-29

F	S70°11'25"E	664'
G	S67°31'09"E	973'
H	S63°16'39"E	973'
J	S59°10'09"E	975'
K	S55°08'18"E	982'

1	N74°10'E	3135'
2	N68°18'08"E	3485'
3	N45°15'E	6038'
4	N12°27'E	10453'
5	N0°24'W	2638'
6	N39°50'E	8818'
7	N44°05'W	12158'
8	N01°03'W	3617'
9	N16°21'W	11132'
10	N32°06'W	4011'

Salomon JOHNSON
D.B. 10-C.P. 76

1	S85°47'27"E	2981'
2	N0°16'39"E	13315'
3	S64°17'57"E	3718'
4	N28°14'38"E	16818'
5	N56°12'57"E	8812'
6	N14°22'26"E	7912'
7	N22°38'18"E	6715'
8	N28°18'06"E	S5365'
9	N25°34'24"E	7112'
10	N6°26'39"E	5915'

MACK B. WHITTLE
D.B. 193 P. 154
P.S. A/33

WAYNE S. WALKER
MARY SUE WALKER
D.B. 40 P. 228
D.B. 20 P. 322

1	S52°41'04"E	8923'
2	S52°14'15"E	5382'
3	S50°05'E	4871'
4	S47°53'42"E	9813'
5	S45°41'20"E	9881'
6	S44°06'45"E	9900'
7	S42°28'12"E	9873'
8	S40°26'15"E	9871'
9	S38°12'12"E	9871'
10	S36°02'15"E	9861'
11	S33°56'39"E	9821'
12	S32°10'09"E	10716'
13	N52°13'29"W	1111'
14	N50°04'37"W	1111'
15	N47°53'42"W	1111'
16	N45°47'27"W	1111'
17	N44°06'44"W	1111'
18	N42°28'12"W	1111'
19	N40°2'12"W	1111'
20	N38°12'12"W	1111'
21	N36°02'15"W	1111'
22	N33°56'39"W	1111'
23	N32°10'09"W	1111'

193.73 ± ACRES

ROBERT B. FICKLING II

DITCH THE LINE

1	N73°04'50"W	5901'
2	N80°33'05"W	9311'
3	N66°32'15"W	17131'
4	N37°42'57"W	4618'
5	N23°47'42"W	6818'

6	N26°52'W	6411'
7	N31°49'50"W	9242'
8	N42°01'09"W	7305'
9	N68°18'27"W	2415'
10	N87°21'45"W	7511'
11	N75°28'54"W	7011'

R/W SCS-5-37

ROBERT B. FICKLING II
D.B. 12 P. 422
P.B. O P. 376 (BARNWELL)

R/W SCS-5-37

AA	S61°33'39"W	2710'
AB	S57°15'18"W	7721'
AC	S53°54'45"W	7689'
AD	S50°44'03"W	7613'
AE	S47°56'27"W	7615'
AF	S47°22'38"W	21765'