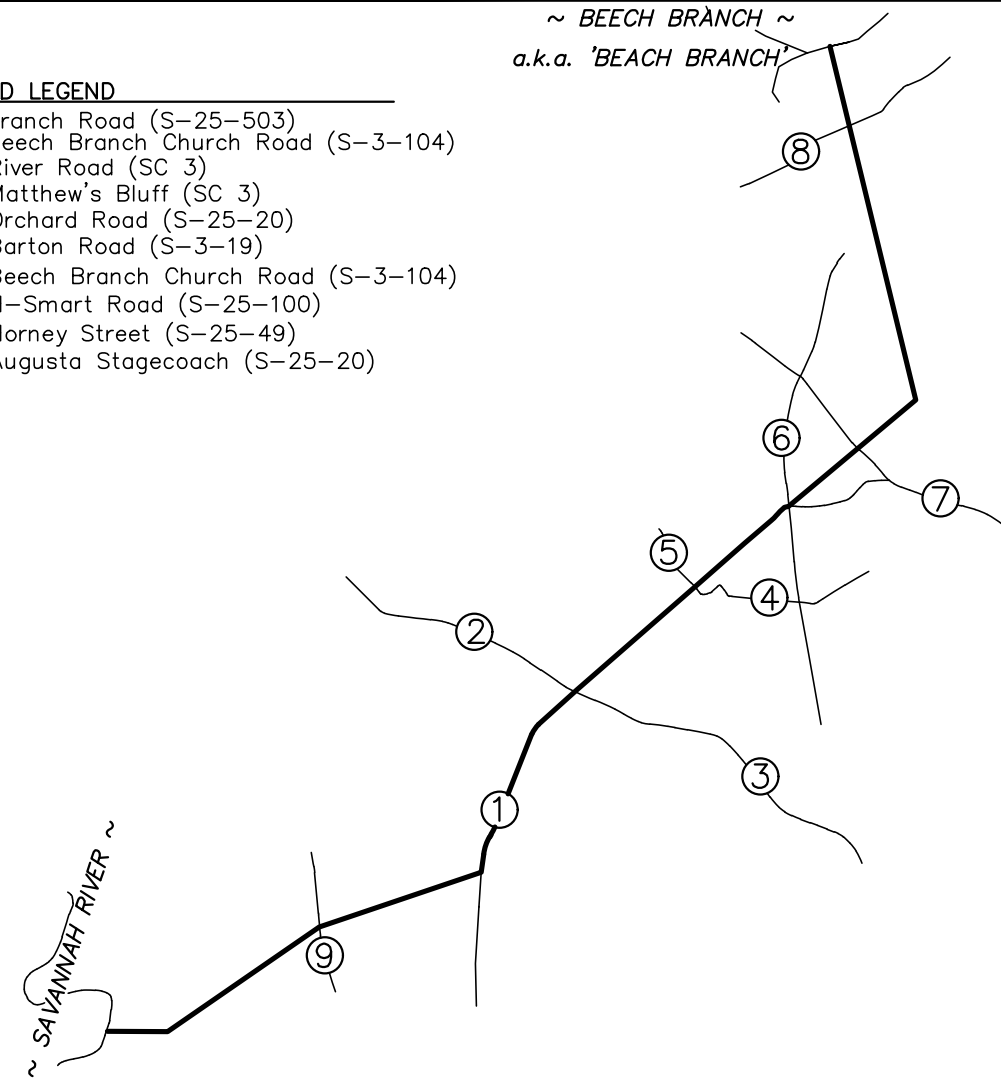


ROAD LEGEND

1. Branch Road (S-25-503)
2. Beech Branch Church Road (S-3-104)
3. River Road (SC 3)
4. Matthew's Bluff (SC 3)
5. Orchard Road (S-25-20)
6. Barton Road (S-3-19)
7. Beech Branch Church Road (S-3-104)
8. H-Smart Road (S-25-100)
9. Horney Street (S-25-49)
8. Augusta Stagecoach (S-25-20)



LOCATION MAP
(NOT TO SCALE)

NOTES

1. THIS IS NOT A VALID, TRUE COPY OF THIS DOCUMENT UNLESS IT BEARS THE ORIGINAL SIGNATURE, SIGNATURE DATE, AND THE RAISED, EMBOSSED SEAL OF THE REGISTERED PROFESSIONAL LAND SURVEYOR NOTED HEREON.
2. THE PURPOSE OF THIS PLAT IS ONLY TO MAP THE SECTION OF THE ALLENDALE-HAMPTON COUNTY LINE RUNNING FROM (DESCRIPTION OF LINE). IT IS NOT INTENDED NOR SHOULD BE CONSTRUED TO BE A BOUNDARY SURVEY OR BOUNDARY PLAT OF ANY OF THE PROPERTY PARCELS ADJACENT TO OR NEAR THE AFOREMENTIONED COUNTY LINE. THE ALLENDALE-HAMPTON COUNTY LINE AND BOUNDARY LINES OF THE ADJOINING PROPERTIES MAY BE CONGRUENT IF AND ONLY IF SO SPECIFIED BY THE SOUTH CAROLINA LEGISLATIVE ACT(S) THAT ESTABLISH AND DESCRIBE OR DEFINE THE COUNTY LINE AS IT IS BEING PLATTED HEREON. HOWEVER, IN NO WAY IS THIS SURVEY OR PLAT OF THIS PORTION OF THE ALLENDALE-HAMPTON COUNTY LINE GIVING WARRANTY TO THE TITLE PROPERTY BOUNDARIES OF THE ADJACENT PARCELS BEING SHOWN OR REFERENCED HEREON.
3. ANY PARCEL INFORMATION REFERENCED ON THIS PLAT IS ONLY THAT USED TO SHOW THE PUBLIC RECORD OWNERSHIP OF THE PROPERTIES ADJOINING OR NEAR THE ALLENDALE-HAMPTON COUNTY LINE BEING FOUND ON RECORD, RESPECTIVELY IN THE ALLENDALE AND HAMPTON REGISTER OF DEEDS (R.O.D.) OFFICES AND DOES NOT CONSTITUTE A TITLE SEARCH, TITLE ABSTRACT, OR TITLE OPINION FOR ANY OF THE PROPERTIES NOTED HEREON.
4. THIS PLAT HAS BEEN DONE FOR THE STATE OF SOUTH CAROLINA IN ACCORDANCE WITH THEIR PLANNED USE AND PURPOSE OF THE INFORMATION SHOWN HEREON. ALL OTHER PARTIES ARE SUBSEQUENTLY PUT ON NOTICE AS TO THE LIMITED DEGREE OF RELIANCE UPON THIS PLAT BY THIRD PROPERTIES.
5. NO SURVEYS, EVALUATION OR DELINEATION OF ANY ENVIRONMENTAL ISSUES OR MATTERS SUCH AS HAZARDOUS WASTE CONTAMINATION, SUBSURFACE CHARACTERISTICS (ALONG OR ON EITHER SIDE OF THE COUNTY LINES SHOWN), WETLANDS, ENDANGERED SPECIES, ETC. HAVE BEEN DONE FOR THE SUBJECT PROPERTIES, AND THIS SURVEY DOES NOT CERTIFY AS TO THE PRESENCE OR ABSENCE OF SUCH CONDITIONS.
6. FOR ADDITIONAL NOTES SPECIFIC TO THIS SURVEY AND THE INFORMATION FOR THIS PLAT AND THE COUNTY BOUNDARY LINE MAPPED HEREON, SEE SHEETS 2 thru 5 of 5.
7. ALL 'NORTHING' (N:) and 'EASTING' (E:) COORDINATES SHOWN ON THIS PLAT ARE EXPRESSLY GIVEN AS SOUTH CAROLINA STATE PLANE COORDINATES (SCSPC), ZONE 3900, NAD 83, 2011 ADJUSTMENT (FT.). ON EACH SHEET, THERE IS A 'COUNTY LINE CORNER & MONUMENT DESCRIPTION TABLE' OF THE SOUTH CAROLINA STATE PLANE COORDINATE DATA FOR EACH CORNER ALONG THE ALLENDALE-HAMPTON (INSERT LINE DESCRIPTION).
8. THE ORIENTATION OF THIS PLAT IS SCSPC GRID NORTH, NAD 83, 2011 ADJUSTMENT, ZONE 3900. ALL LINES, DIMENSIONS, AND DISTANCES SHOWN HEREON ARE SCALED TO GRID. THE SCSPC COMBINED SCALE FACTOR FOR THIS PLAT IS 1.00005913. AT THE GEODETIC MONUMENT DESIGNATED '7 218' (PID: CK4332) BEING FOUND NEAR THE INTERSECTION OF S.C. HWY. 170 & S.C. HWY. 462 (SCSPC N: 188,981.45 E: 2,023,689.35). THE AVERAGE SCSPC COMBINED SCALE FACTOR FOR THIS PLAT IS 1.00006394.
9. 'BEECH BRANCH' SPELLED 'BEACH BRANCH' IN S.C. LEGISLATIVE ACT DESCRIBING THE ALLENDALE-HAMPTON COUNTY LINE (SEE SOUTH CAROLINA CODE OF LAWS, SECTION 4-3-30, et al., S.C. LEGISLATURE WEBSITE (<https://www.scstatehouse.gov/code/tittle4.php>)).

I HEREBY STATE THAT TO THE BEST OF MY PROFESSIONAL KNOWLEDGE, INFORMATION, AND BELIEF, THE SURVEY SHOWN HEREON WAS MADE IN ACCORDANCE WITH THE REQUIREMENTS OF THE 'STANDARDS OF PRACTICE MANUAL FOR SURVEYING IN SOUTH CAROLINA', AND MEETS OR EXCEEDS THE REQUIREMENTS FOR A CLASS 'A' SURVEY AS SPECIFIED THEREIN.

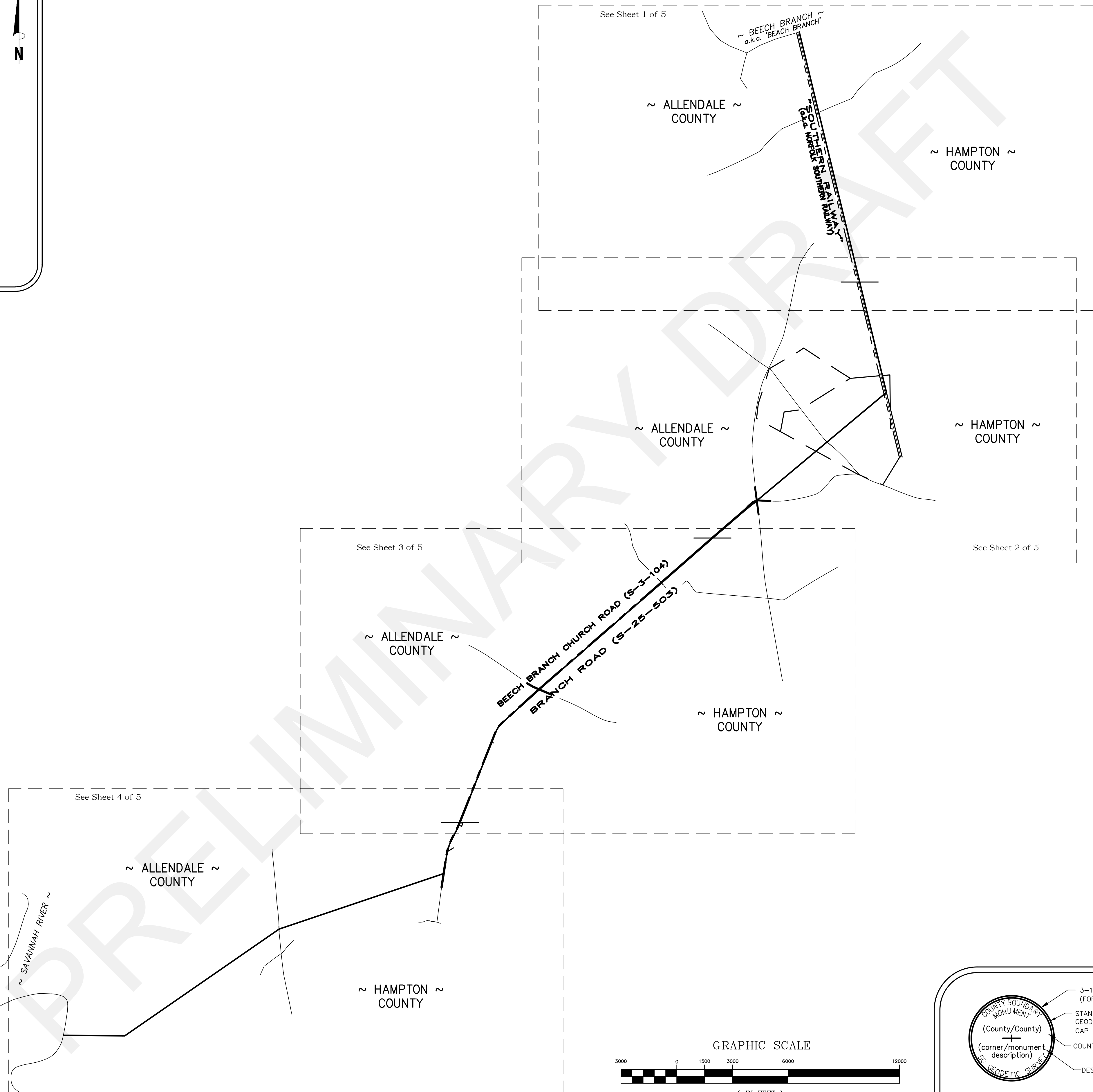
DAVID BRANTLEY
REGISTERED PROFESSIONAL ENGINEER
LICENSE NO. 11547
STATE OF SOUTH CAROLINA

NOT VALID UNLESS
SIGNED IN RED INK

REVIEW ONLY

CORNERSTONE SURVEYING & ENGINEERING, INC.
LICENSE NO. C00037
STATE OF SOUTH CAROLINA

C.O.A.

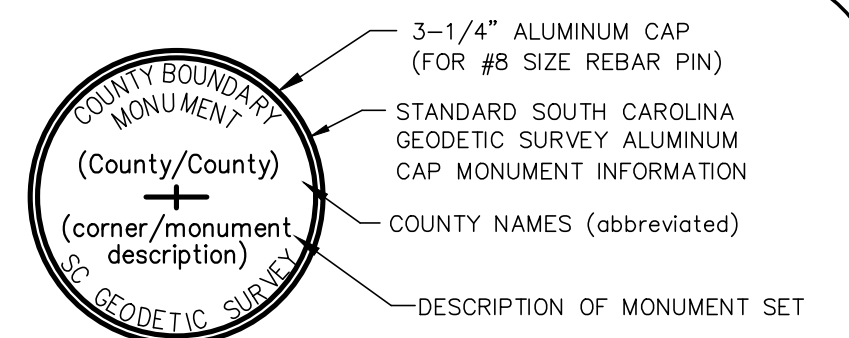
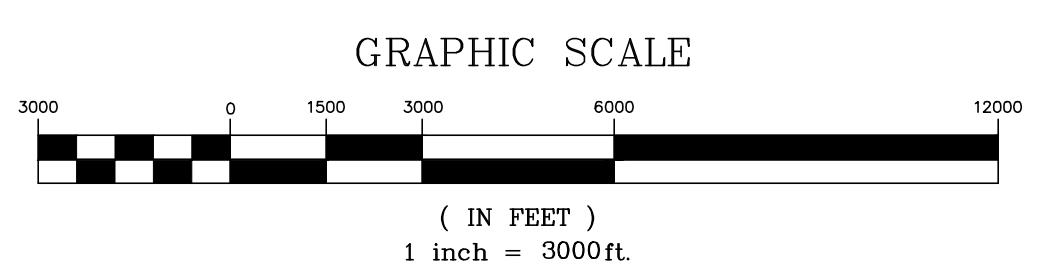


See Sheet 1 of 5

See Sheet 3 of 5

See Sheet 2 of 5

See Sheet 4 of 5



SURVEY MARKER CAP DETAIL
(N.T.S.)

GRID NORTH
NAD 83 (2011 ADJUSTMENT)

This is not a valid, true copy of this document unless bearing on the original signature, signature date, and the raised, embossed seal of the surveyor or engineer.
Copyright © 2023, CORNERSTONE SURVEYING & ENGINEERING, INC. All rights reserved. Reproduction or use of this document, in whole or in part, without permission is prohibited.
Print No. _____
Date: ____/____/____

CORNERSTONE
SURVEYING & ENGINEERING, INC.

1240 Becons Bridge Rd. • Summerville • South Carolina • 29485 • Phone: 843-871-9706

ALLENDALE-HAMPTON COUNTY LINE

A PLAT OF A PORTION OF THE
COMMENCING ON THE EASTERN EDGE OF R/W OF THE SOUTHERN RAILWAY COMPANY AND BEECH BRANCH (S-25-503) INTERSECTION; THENCE SOUTHERLY ALONG SAID EASTERN EDGE OF R/W TO A MONUMENT; THENCE SOUTHWEST TO A MONUMENT NEAR THE INTERSECTION OF BEECH BRANCH CHURCH ROAD (S-3-104) AND H-SMART ROAD (S-25-100); THENCE SOUTHWESTERLY ALONG THE SOUTH SIDE OF BRANCH ROAD (S-25-503) TO A MONUMENT ABOUT 1/4 MILE ABOVE LONG CREEK BRIDGE; THENCE WESTERLY TO A MONUMENT ON AUGUSTA STAGECOACH ROAD; THENCE SOUTHWEST TO A MONUMENT SOUTH OF A SMALL BRANCH; THENCE CONTINUING WEST TO THE CENTER OF THE SAVANNAH RIVER.

Date of Survey:
9-20-2023

Drawn: AWK
 Design: AWK
 Checked: KAW
 Approved: KAW
 CAD File:
 F.B. & Pg. N/A
 P.B. & Pg. N/A
 PLBoard Appl.# N/A

Date	Revision No.

Proj. No.: 22030-005
Sheet 1 of 5

NOTE:
FOR 'ADDITIONAL NOTES' SEE SHEET 1.

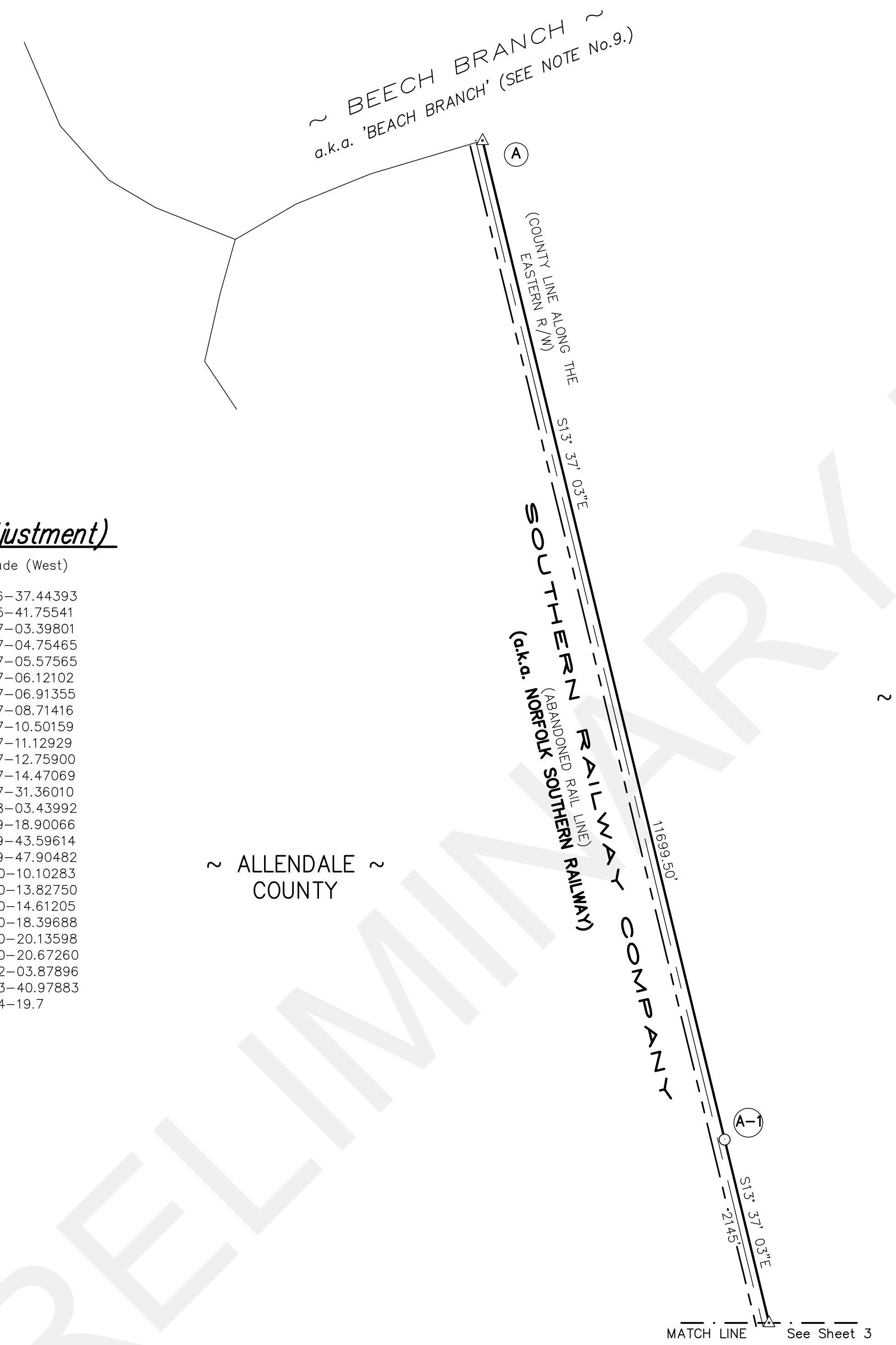
This is not a valid, true copy of the document unless bearing on the embossed seal of the surveyor or engineer.
Copyright 2023, Cornerstone Surveying & Engineering, Inc. All rights reserved. Reproduction or use of this document, in whole or in part, without permission is prohibited.
Print No. _____
Date: / /

GRID NORTH
NAD 83 (2011 ADJUSTMENT)

CORNERSTONE
SURVEYING & ENGINEERING, INC.
1240 Bacons Bridge Rd. • Summerville • South Carolina • 29485 • Phone: 843-871-9706

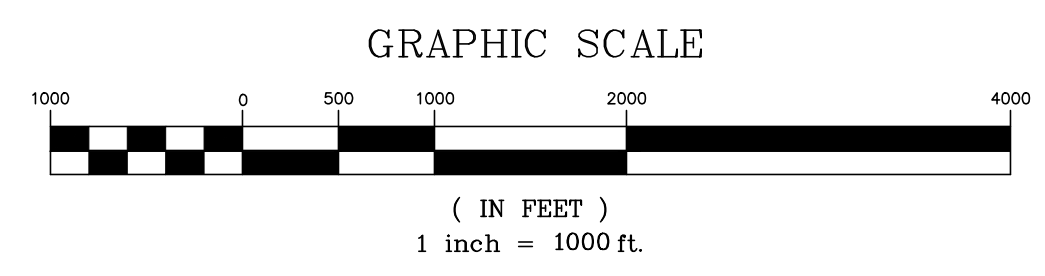
COUNTY LINE MONUMENT SUMMARY TABLE – NAD 83 (2011 Adjustment)

Monument	Northing (ifT.)	Eastng (ifT.)	Description	Latitude (North)	Longitude (West)
'A'	385321.35	1914956.21	COMPUTED POINT	32-53-31.35031	081-16-37.44393
'B'	365924.01	1919655.23	COUNTY MONUMENT DISK	32-50-19.53138	081-15-41.75541
'C'	360095.23	1912673.92	COUNTY MONUMENT DISK	32-49-21.67231	081-17-03.39801
'C-1'	360074.27	1912558.10	COMPUTED POINT	32-49-21.46176	081-17-04.75465
'C-2'	360051.04	1912487.98	COMPUTED POINT	32-49-21.22998	081-17-05.57565
'C-3'	360028.10	1912441.38	COMPUTED POINT	32-49-21.00171	081-17-06.12102
'C-4'	359965.28	1912373.58	COMPUTED POINT	32-49-20.37825	081-17-06.91355
'C-5'	359822.89	1912219.54	COMPUTED POINT	32-49-18.96507	081-17-08.71416
'C-6'	359665.03	1912066.58	COMPUTED POINT	32-49-17.39884	081-17-10.50159
'C-7'	359604.57	1912012.85	COMPUTED POINT	32-49-16.79910	081-17-11.12929
'C-8'	359458.81	1911873.38	COMPUTED POINT	32-49-15.35296	081-17-12.75900
'C-9'	359322.77	1911726.94	MAGNAIL & WASHER SET	32-49-15.00280	081-17-14.47069
'C-10'	358083.40	1910282.23	COMPUTED POINT	32-49-01.69900	081-17-31.36010
'C-11'	355678.16	1907537.68	COMPUTED POINT	32-48-37.82094	081-18-03.43992
'C-12'	350046.58	1901080.17	COMPUTED POINT	32-47-41.90329	081-19-18.90066
'C-13'	348137.43	1898966.16	COMPUTED POINT	32-47-22.94622	081-19-43.59614
'C-14'	347604.61	1898596.66	COMPUTED POINT	32-47-17.66227	081-19-47.90482
'C-15'	342770.24	1896686.03	COMPUTED POINT	32-46-29.76486	081-20-10.10283
'C-16'	342093.02	1896365.82	COMPUTED POINT	32-46-23.05340	081-20-13.82750
'C-17'	341971.71	1896298.44	COMPUTED POINT	32-46-21.85085	081-20-14.61205
'C-18'	341017.31	1895972.17	COMPUTED POINT	32-46-12.39644	081-20-18.39688
'D'	340025.46	1895820.43	MAGNAIL & WASHER SET	32-46-02.57710	081-20-20.13598
'D-1'	340010.00	1895774.56	COUNTY MONUMENT DISK	32-46-02.42264	081-20-20.67260
'E'	337034.91	1886951.77	COUNTY MONUMENT DISK	32-45-32.68542	081-22-03.87896
'F'	331292.42	1878638.24	COUNTY MONUMENT DISK	32-44-35.55985	081-23-40.97883
'G'	331314	1875332	COMPUTED POINT	32-44-35.6	081-24-19.7



LEGEND

- — — — — EXISTING COUNTY LINE
- — — — — EXISTING COUNTY LINE RUNNING ALONG THE CURRENT R/W
- — — — — ADJOINER BOUNDARY LINE (by TITLE &/or MONUMENTATION)
- — — — — RIGHT-OF-WAY (R.O.W., ROW, R/W)
- — — — — SHEET BORDER
- — — — — TIE LINE
- — — — — MATCH LINE BETWEEN PLAT SHEETS
- — — — — WATER EDGE
- — — — — PUBLIC ROADS/ROADWAYS
- IRON PIN OR PIPE FOUND (I.P.F. OR I.P.P. SIZE & TYPE NOTED)
- STONE FOUND (TYPICALLY AN IRREGULAR MASS; APPROXIMATE DIMENSIONS OF TOP PORTION/AREA OF STONE NOTED)
- ▲ CONCRETE MONUMENT FOUND (C.M.F. OR C.M.; SIZE/DIMENSIONS NOTED)
- COMPUTED POINT; NO MONUMENT FOUND &/or SET
- (A), 'A' COUNTY LINE CORNER IDENTIFIER
- IRON PIN SET (I.P.S.) – #8 R.B. w/3-1/4" S.C.G.S. ALUMINUM CAP SET (UNLESS NOTED OTHERWISE)
- M.N. & W.S. MAGNAIL & WASHER SET – "COUNTY BOUNDARY MONUMENT"
- RBR or R.B. IRON REINFORCING BAR (REBAR)
- O.T. or OT OPEN TOP IRON PIPE
- C.T. or CT CRIMP TOP IRON PIPE
- P.T. or PT PINCH TOP IRON PIPE
- A.G.L. ABOVE GROUND LEVEL
- R.M.C. REGISTER OF MESNE CONVEYANCE
- R.O.D. REGISTER OF DEEDS
- BK./PG. BOOK/PAGE
- D.B./PG. DEED BOOK/PAGE
- P.B./PG. PLAT BOOK/PAGE
- P.C./SL. PLAT CABINET/SLIDE
- T.M.S. TAX MAP SYSTEM (COUNTY PARCEL IDENTIFICATION)
- C/L CENTER LINE
- P.I. INTERSECTION POINT / POINT OF INTERSECTION
- C.P. COMPUTED POINT
- CHD. CHORD
- S.C.G.S. SOUTH CAROLINA GEODETIC SURVEY
- ANNEX. ANNEXATION
- SCDOT SOUTH CAROLINA DEPARTMENT OF TRANSPORTATION
- DKT. DOCKET
- PG. PAGE
- ML or M.L. MATCHLINE
- NAD 83 NORTH AMERICA DATUM of 1983 (2011 Adjustment)
- N/E. NORTHING/EASTING SCSPC COORDINATES
- SCSPC SOUTH CAROLINA STATE PLANE COORDINATE (SYSTEM); ZONE 3900; ifT.



I HEREBY STATE THAT TO THE BEST OF MY PROFESSIONAL KNOWLEDGE, INFORMATION, AND BELIEF, THE SURVEY SHOWN HEREON WAS MADE IN ACCORDANCE WITH THE REQUIREMENTS OF THE "STANDARDS OF PRACTICE MANUAL" FOR SURVEYING IN SOUTH CAROLINA, AND MEETS OR EXCEEDS THE REQUIREMENTS FOR A CLASS "A" SURVEY AS SPECIFIED THEREIN.

NOT VALID UNLESS SIGNED IN RED INK

CORNERSTONE SURVEYING & ENGINEERING, INC.
C.O.A.

REVIEW ONLY
STAMP

EMBOSSSED SEAL

ALLENDALE-HAMPTON COUNTY LINE
A PLAT OF A PORTION OF THE
COMMENCING ON THE EASTERN EDGE OF R/W OF THE SOUTHERN RAILWAY COMPANY AND BEECH BRANCH (S-25-503) INTERSECTION; THENCE SOUTHERLY ALONG SAID EASTERN EDGE OF R/W TO A MONUMENT; THENCE SOUTHWEST TO A MONUMENT NEAR THE INTERSECTION OF BEECH BRANCH CHURCH ROAD (S-3-104) AND H-SMART ROAD (S-25-100); THENCE SOUTHWESTERLY ALONG THE SOUTH SIDE OF BRANCH ROAD (S-25-503) TO A MONUMENT ON ABOUT 1/4 MILE ABOVE LONG CREEK BRIDGE; THENCE WESTERLY TO A MONUMENT ON AUGUSTA STAGECOACH ROAD; THENCE SOUTHWEST TO A MONUMENT SOUTH OF A SMALL BRANCH; THENCE CONTINUING WEST TO THE CENTER OF THE SAVANNAH RIVER.

Date of Survey: 9-20-2023

□ Drawn: AWK
□ Design: AWK
□ Checked: KAW
□ Approved: KAW
CAD File:
F.B. & Pg. N/A
P.B. & Pg. N/A
Pl. Board Appl. # N/A

Date	Revision No.

Proj. No.: 22030-005
Sheet 2 of 5

GRID NORTH
NAD 83 (2011 ADJUSTMENT)

NOTE:
FOR 'ADDITIONAL NOTES' SEE SHEET 1.

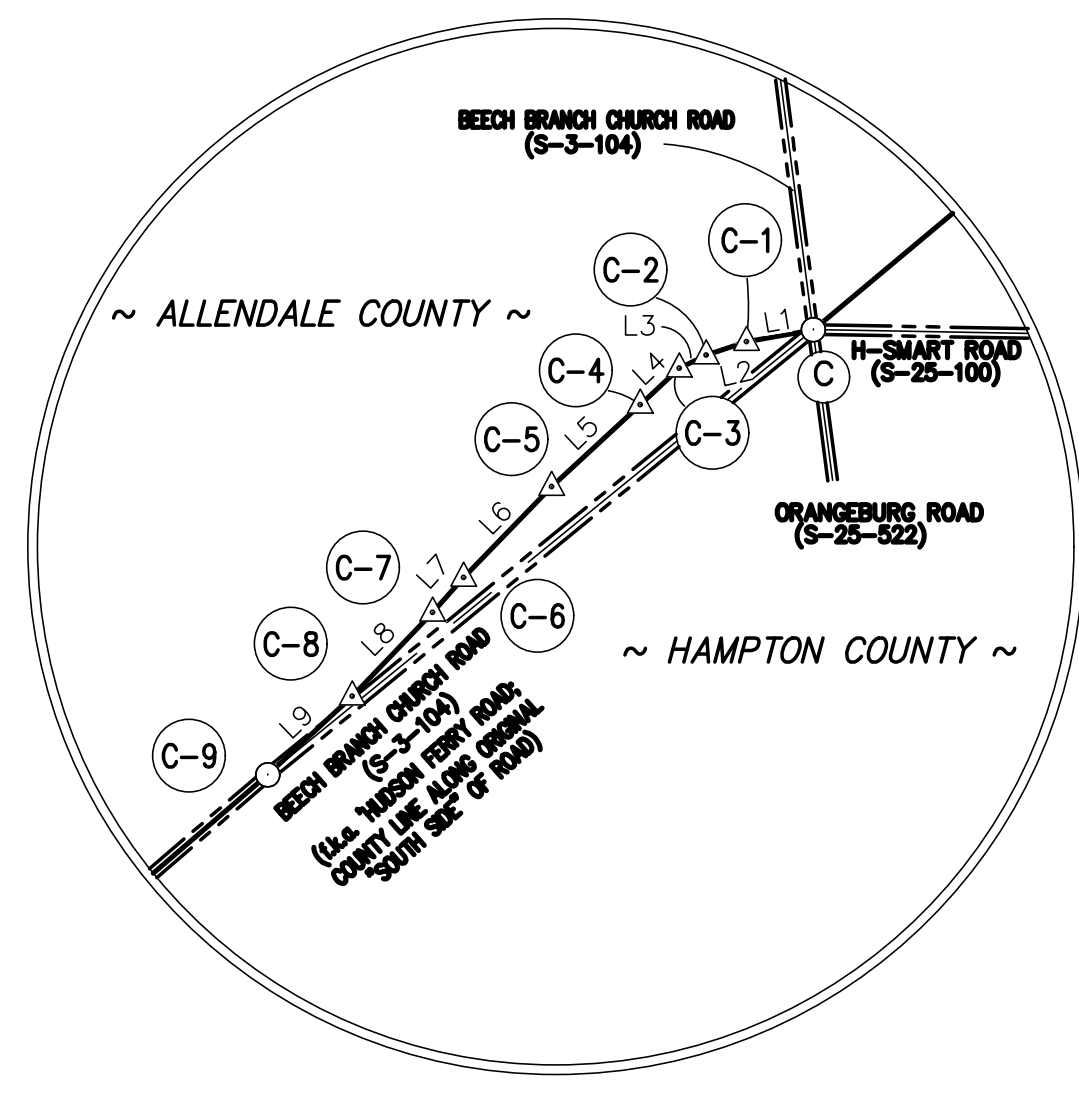
This is not a valid, true copy of the document unless bearing on the embossed seal of the surveyor or engineer.
© Copyright 2023, CORNERSTONE SURVEYING & ENGINEERING, INC. All rights reserved. Reproduction or use of this document, in whole or in part, without permission is prohibited.
Print No. _____
Date: ____/____/____

CORNERSTONE
SURVEYING & ENGINEERING, INC.
1240 Bacons Bridge Rd. • Summerville • South Carolina • 29485 • Phone: 843-871-9706

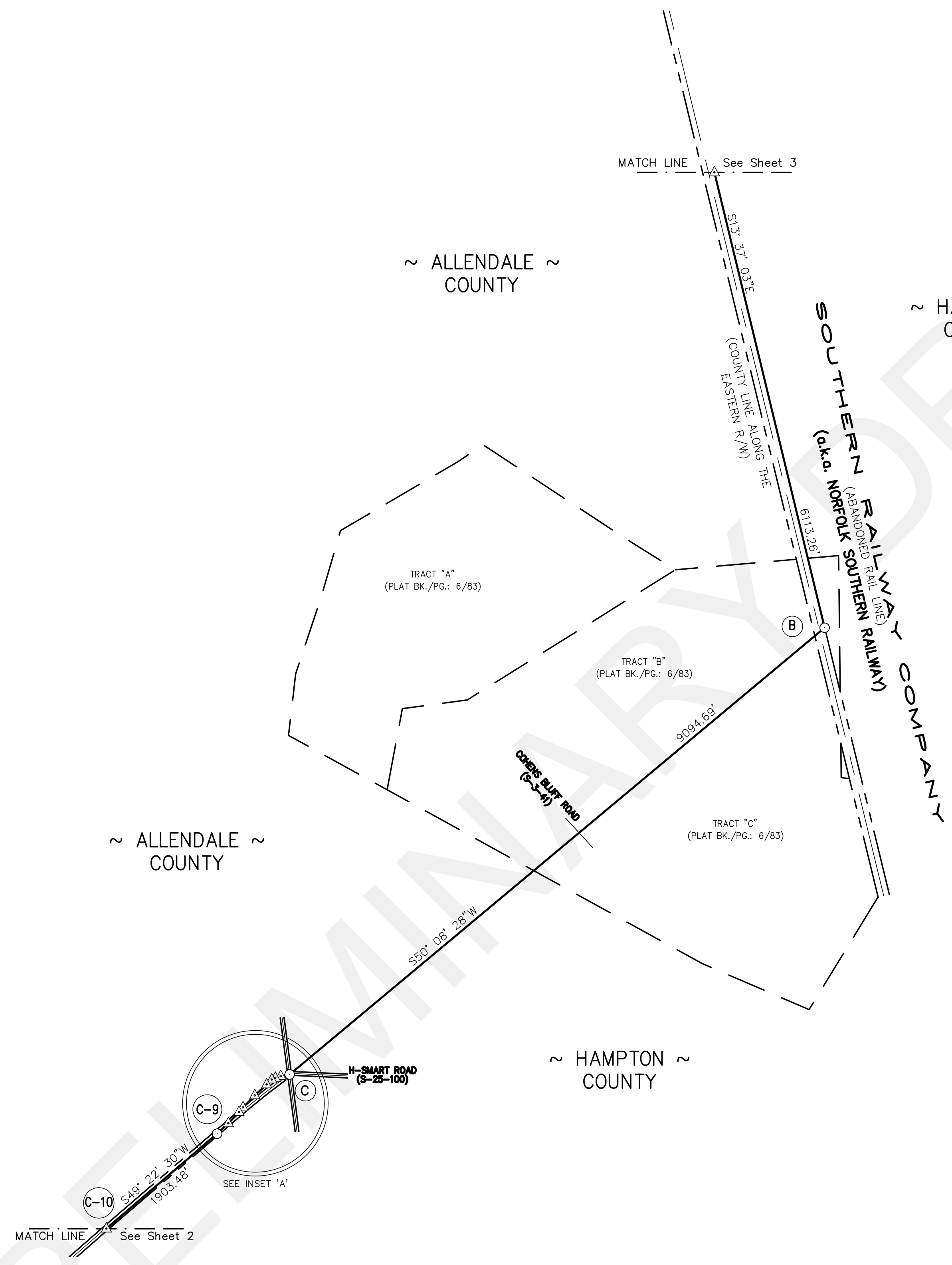
ALLENDALE - HAMPTON COUNTY LINE
A PLAT OF A PORTION OF THE
COMMENCING ON THE EASTERN EDGE OF R/W OF THE SOUTHERN RAILWAY COMPANY AND BEECH BRANCH (S-25-503) INTERSECTION; THENCE SOUTHERLY ALONG SAID EASTERN EDGE OF R/W TO A MONUMENT; THENCE SOUTHWEST TO A MONUMENT NEAR THE INTERSECTION OF BEECH BRANCH CHURCH ROAD (S-3-104) AND H-SMART ROAD (S-25-100); THENCE SOUTHWESTERLY ALONG THE SOUTH SIDE OF BRANCH ROAD (S-25-503) TO A MONUMENT ABOUT 1/4 MILE ABOVE LONG CREEK BRIDGE; THENCE WESTERLY TO A MONUMENT ON AUGUSTA STAGGCOACH ROAD; THENCE SOUTHWEST TO A MONUMENT SOUTH OF A SMALL BRANCH; THENCE CONTINUING WEST TO THE CENTER OF THE SAVANNAH RIVER.

Date of Survey:
9-20-2023
 Drawn: AWK
 Design: AWK
 Checked: KAW
 Approved: KAW
 CAD File:
 F.B. & Pg. N/A
 P.B. & Pg. N/A
 Pl. Board Appl. # N/A
 Date _____ Revision No. _____

Proj. No.: 22030-005
Sheet 3 of 5



INSET 'A'
(NOT TO SCALE)



LINE TABLE (EXISTING COUNTY LINE)

Line #	Length	Direction
L1	117.70'	S 79°44'31" W
L2	73.86'	S 71°40'26" W
L3	51.95'	S 63°47'40" W
L4	92.42'	S 47°10'53" W
L5	209.77'	S 47°15'02" W
L6	219.81'	S 44°05'45" W
L7	80.89'	S 41°37'34" W
L8	201.74'	S 43°44'17" W
L9	199.88'	S 47°06'27" W

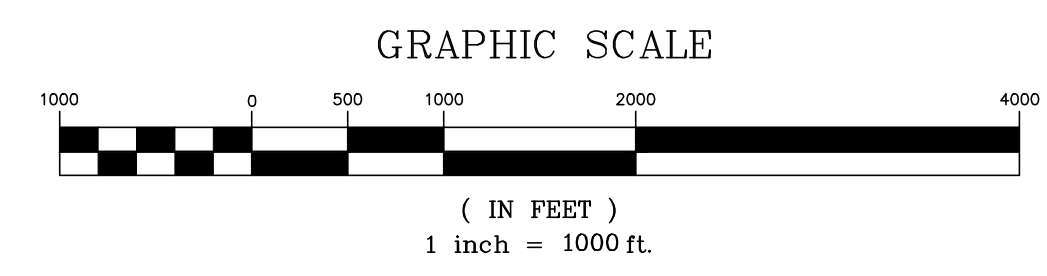
I HEREBY STATE THAT TO THE BEST OF MY PROFESSIONAL KNOWLEDGE, INFORMATION, AND BELIEF, THE SURVEY SHOWN HEREON WAS MADE IN ACCORDANCE WITH THE REQUIREMENTS OF THE "STANDARDS OF PRACTICE MANUAL FOR SURVEYING IN SOUTH CAROLINA", AND MEETS OR EXCEEDS THE REQUIREMENTS FOR A CLASS "A" SURVEY AS SPECIFIED THEREIN.

NOT VALID UNLESS SIGNED IN RED INK

C.O.A.

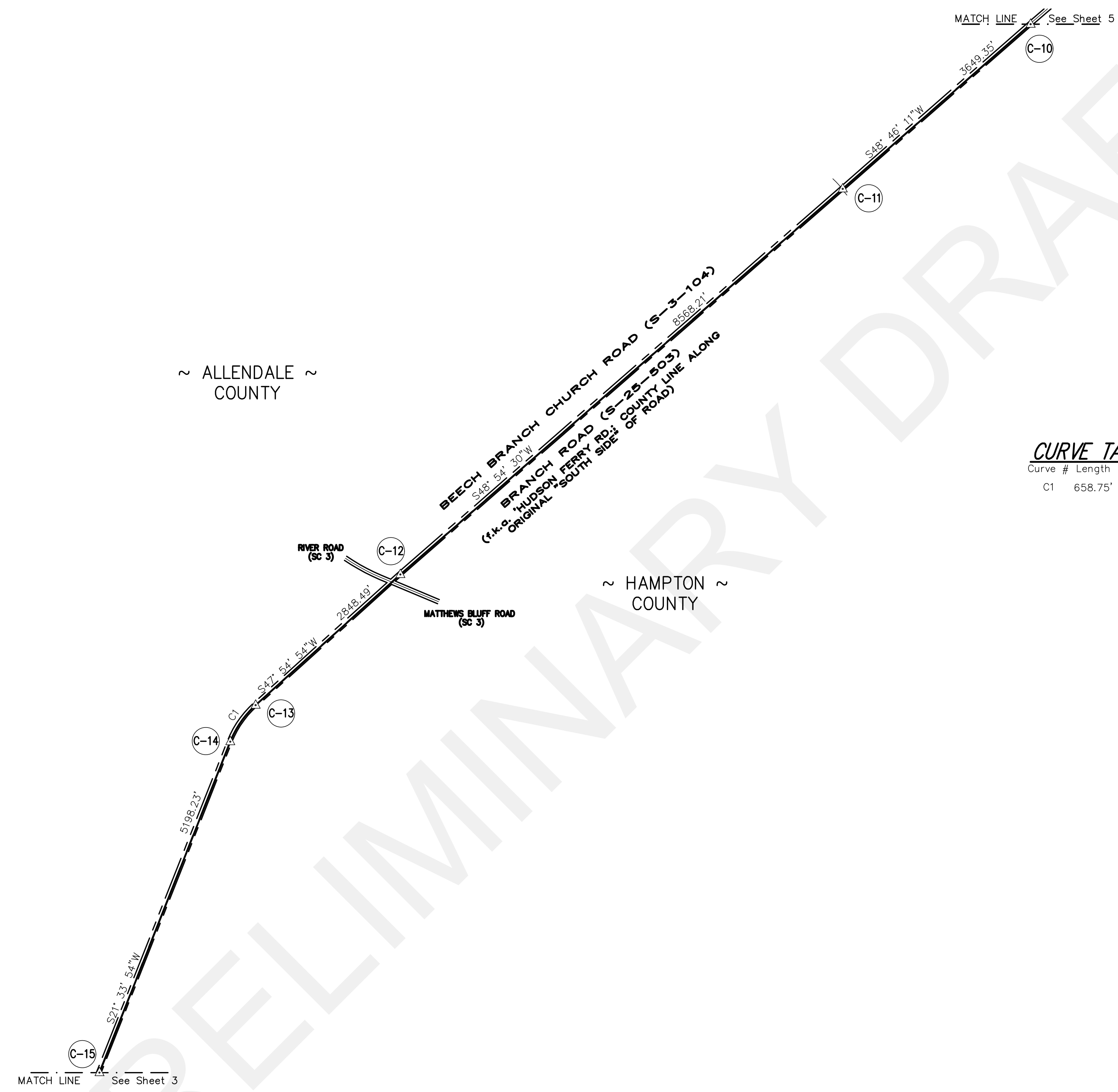
STAMP

EMBOSSSED SEAL



GRID NORTH
NAD 83 (2011 ADJUSTMENT)

NOTE:
FOR 'ADDITIONAL NOTES' SEE SHEET 1.



CURVE TABLE (EXISTING COUNTY LINE)

Curve #	Length	Radius	Tangent	Delta	Chd. Length	Chd. Direction
C1	658.75'	1422.39'	332.96'	26°21'00"	648.40'	S 34°44'24" W

I HEREBY STATE THAT TO THE BEST OF MY PROFESSIONAL KNOWLEDGE, INFORMATION, AND BELIEF, THE SURVEY SHOWN HEREON WAS MADE IN ACCORDANCE WITH THE REQUIREMENTS OF THE "STANDARDS OF PRACTICE MANUAL FOR SURVEYING IN SOUTH CAROLINA", AND MEETS OR EXCEEDS THE REQUIREMENTS FOR A CLASS "A" SURVEY AS SPECIFIED THEREIN.

DAVID E. BRANTLEY
Professional Engineer
No. 11199
State of South Carolina

NOT VALID UNLESS
SIGNED IN RED INK

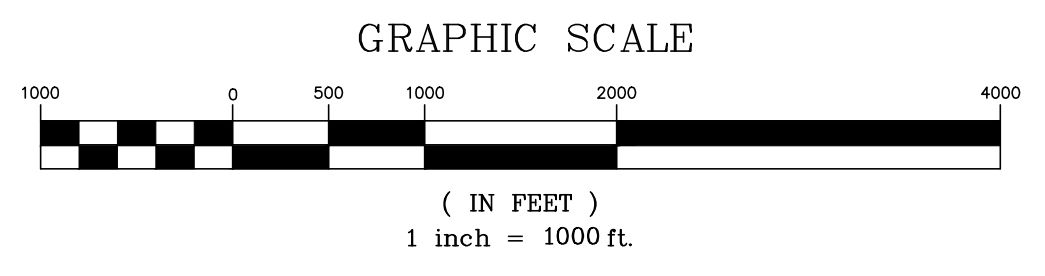
CORNERSTONE SURVEYING & ENGINEERING, INC.
No. 00037
State of South Carolina

REVIEW ONLY

C.O.A.

STAMP

EMBOSSED SEAL



This is not a valid, true copy of the document unless bearing on the embossed seal of the surveyor or engineer.
Copyright 2023, Cornerstone Surveying & Engineering, Inc. All rights reserved. Reproduction or use of this document, in whole or in part, without permission is prohibited.
Print No. _____
Date: ____/____/____

CORNERSTONE
SURVEYING & ENGINEERING, INC.
1240 Bacons Bridge Rd. • Summerville • South Carolina • 29485 • Phone: 843-871-9706

A PLAT OF A PORTION OF THE
ALLEDALE - HAMPTON COUNTY LINE

COMMENCING ON THE EASTERN EDGE OF R/W OF THE SOUTHERN RAILWAY COMPANY AND BEECH BRANCH (S-25-503) INTERSECTION; THENCE SOUTHERLY ALONG SAID EASTERN EDGE OF R/W TO A MONUMENT; THENCE SOUTHWEST TO A MONUMENT NEAR THE INTERSECTION OF BEECH BRANCH CHURCH ROAD (S-3-104) AND H-SWART ROAD (S-25-100); THENCE SOUTHWESTERLY ALONG THE SOUTH SIDE OF BRANCH ROAD (S-25-503) TO A MONUMENT ABOUT 1/4 MILE ABOVE LONG CREEK BRIDGE; THENCE WESTERLY TO A MONUMENT ON AUGUSTA STAGECOACH ROAD; THENCE SOUTHWEST TO A MONUMENT SOUTH OF A SMALL BRANCH; THENCE CONTINUING WEST TO THE CENTER OF THE SAVANNAH RIVER.

Date of Survey:
9-20-2023

Drawn: AWK
 Design: AWK
 Checked: KAW
 Approved: KAW

CAD File:
F.B. & Pg. N/A
P.B. & Pg. N/A
Pl.Board Appl.# N/A

Date	Revision No.

Proj. No.: 22030-005
Sheet 4 Of 5

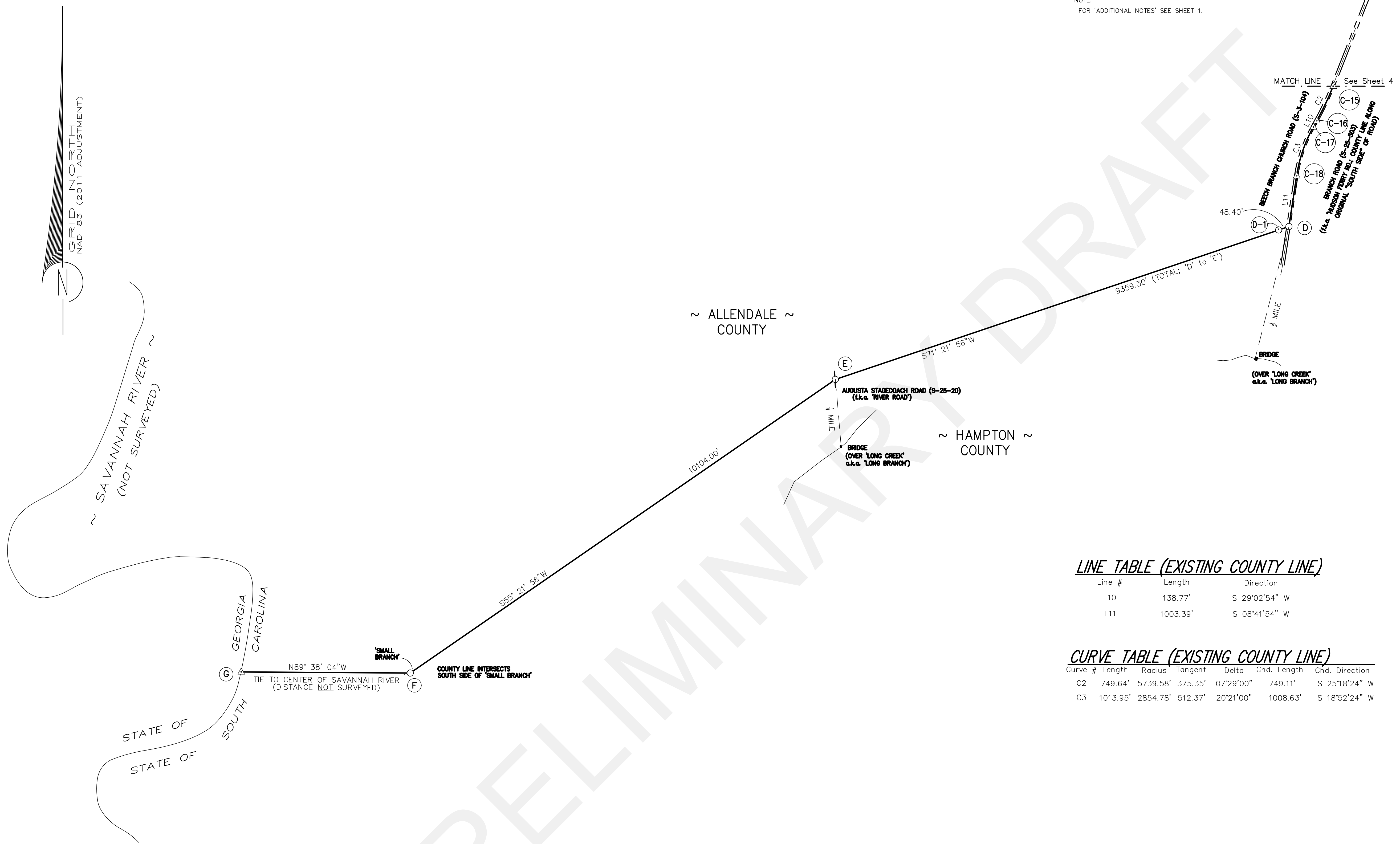
NOTE:
FOR 'ADDITIONAL NOTES' SEE SHEET 1.

This is not a valid, true copy of the document unless bearing on the embossed seal of the surveyor or engineer.
 Copyright 2023, Cornerstone Surveying & Engineering, Inc. All rights reserved. Reproduction or use of this document, in whole or in part, without permission is prohibited.
 Print No. _____
 Date: / /

CORNERSTONE
 SURVEYING & ENGINEERING, INC.
 1240 Bacons Bridge Rd. • Summerville • South Carolina • 29485 • Phone: 843-871-9706

ALLENDALE-HAMPTON COUNTY LINE

COMMENCING ON THE EASTERN EDGE OF R/W OF THE SOUTHERN RAILWAY COMPANY AND BEECH BRANCH (S-25-503) INTERSECTION; THENCE SOUTHERLY ALONG SAID EASTERN EDGE OF R/W TO A MONUMENT; THENCE SOUTHWEST TO A MONUMENT NEAR THE INTERSECTION OF BEECH BRANCH CHURCH ROAD (S-3-104) AND H-SWART ROAD (S-25-100); THENCE SOUTHWESTERLY ALONG THE SOUTH SIDE OF BRANCH ROAD (S-25-503) TO A MONUMENT ABOUT 1/2 MILE ABOVE LONG CREEK BRIDGE; THENCE WESTERLY TO A MONUMENT ON AUGUSTA STAGECOACH ROAD; THENCE SOUTHWEST TO A MONUMENT SOUTH OF A SMALL BRANCH; THENCE CONTINUING WEST TO THE CENTER OF THE SAVANNAH RIVER.

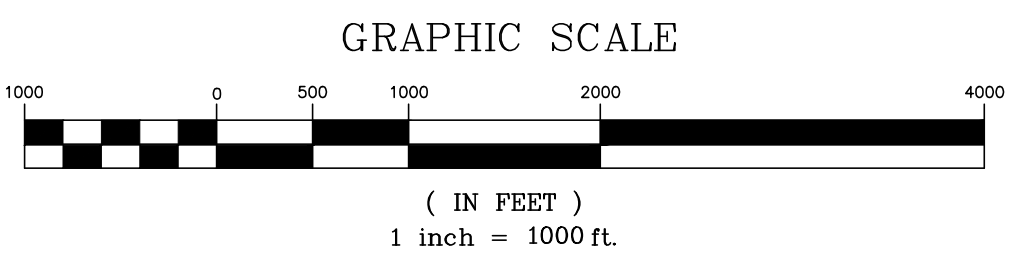


LINE TABLE (EXISTING COUNTY LINE)

Line #	Length	Direction
L10	138.77'	S 29°02'54" W
L11	1003.39'	S 08°41'54" W

CURVE TABLE (EXISTING COUNTY LINE)

Curve #	Length	Radius	Tangent	Delta	Chd. Length	Chd. Direction
C2	749.64'	5739.58'	375.35'	07°29'00"	749.11'	S 25°18'24" W
C3	1013.95'	2854.78'	512.37'	20°21'00"	1008.63'	S 18°52'24" W



I HEREBY STATE THAT TO THE BEST OF MY PROFESSIONAL KNOWLEDGE, INFORMATION, AND BELIEF, THE SURVEY SHOWN HEREON WAS MADE IN ACCORDANCE WITH THE REQUIREMENTS OF THE 'STANDARDS OF PRACTICE MANUAL FOR SURVEYING IN SOUTH CAROLINA', AND MEETS OR EXCEEDS THE REQUIREMENTS FOR A CLASS 'A' SURVEY AS SPECIFIED THEREIN.

NOT VALID UNLESS SIGNED IN RED INK

DAVID BRANTLEY
 PROFESSIONAL ENGINEER
 LICENSE NO. 10653
 STATE OF SOUTH CAROLINA

REVIEW ONLY

C.O.A. STAMP EMBOSSED SEAL

Date of Survey:
 9-20-2023
 Drawn: AWK
 Design: AWK
 Checked: KAW
 Approved: KAW
 CAD File:
 F.B. & Pg. N/A
 P.B. & Pg. N/A
 Pl.Board Appl.# N/A

Date	Revision No.