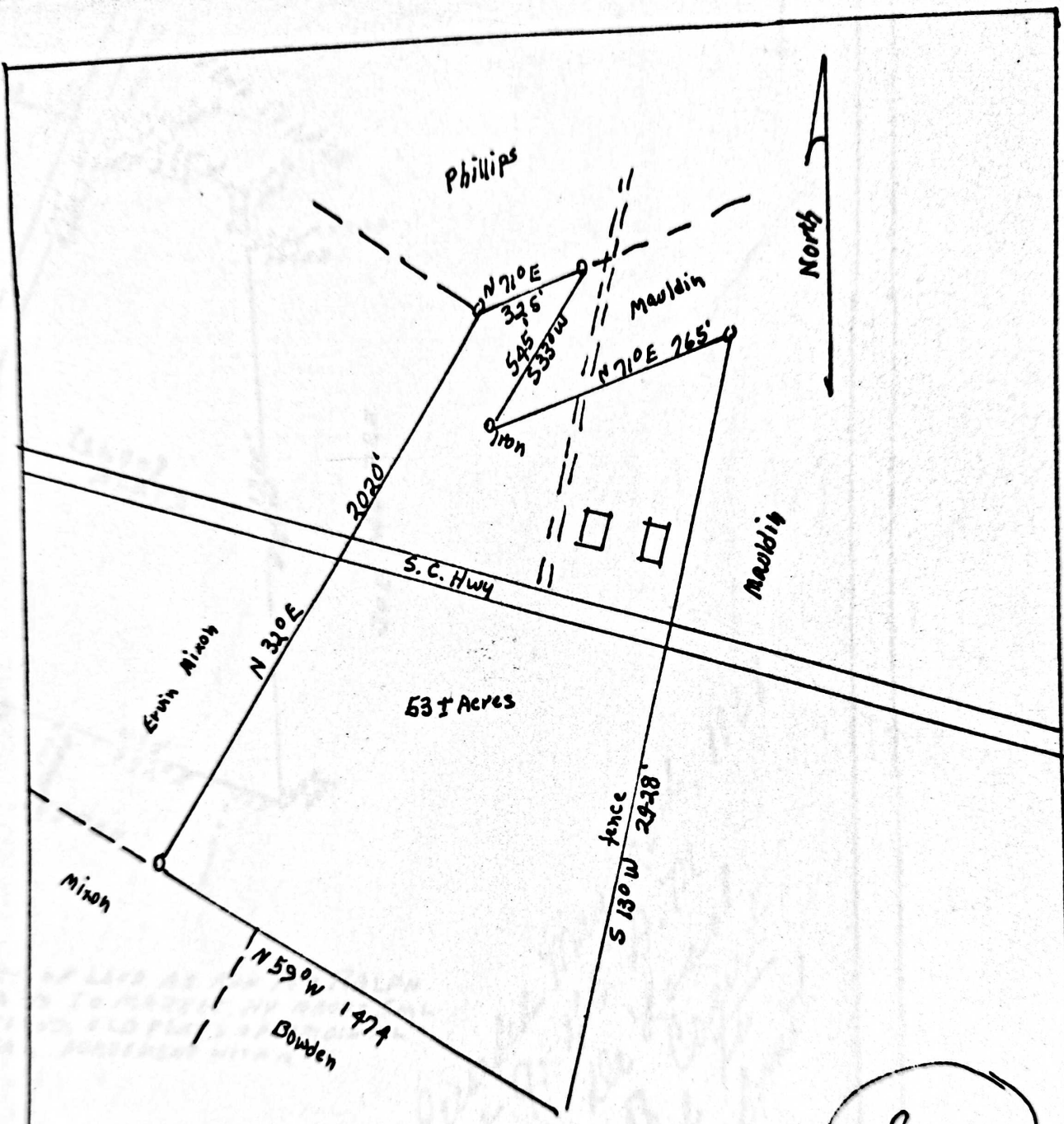


Brunson  
S-25-12



Seal

Recorded May 17th, 1968  
 at 11:15 A.M.  
 B. J. deLoach  
 Clerk of Court  
 Delivered to Erlene  
 Barnes.

PLAT OF PROPERTY  
 OF  
 LENORA BARNES

Located approximately 2 miles North of  
 Hampton, Hampton County, South Carolina.

Scale: 1" = 400'      Date: Sept. 17, 1962  
 Surveyed by: Joe P. Miley, Reg. C.E., L.S.

Fairfax,  
 968.  
 S.