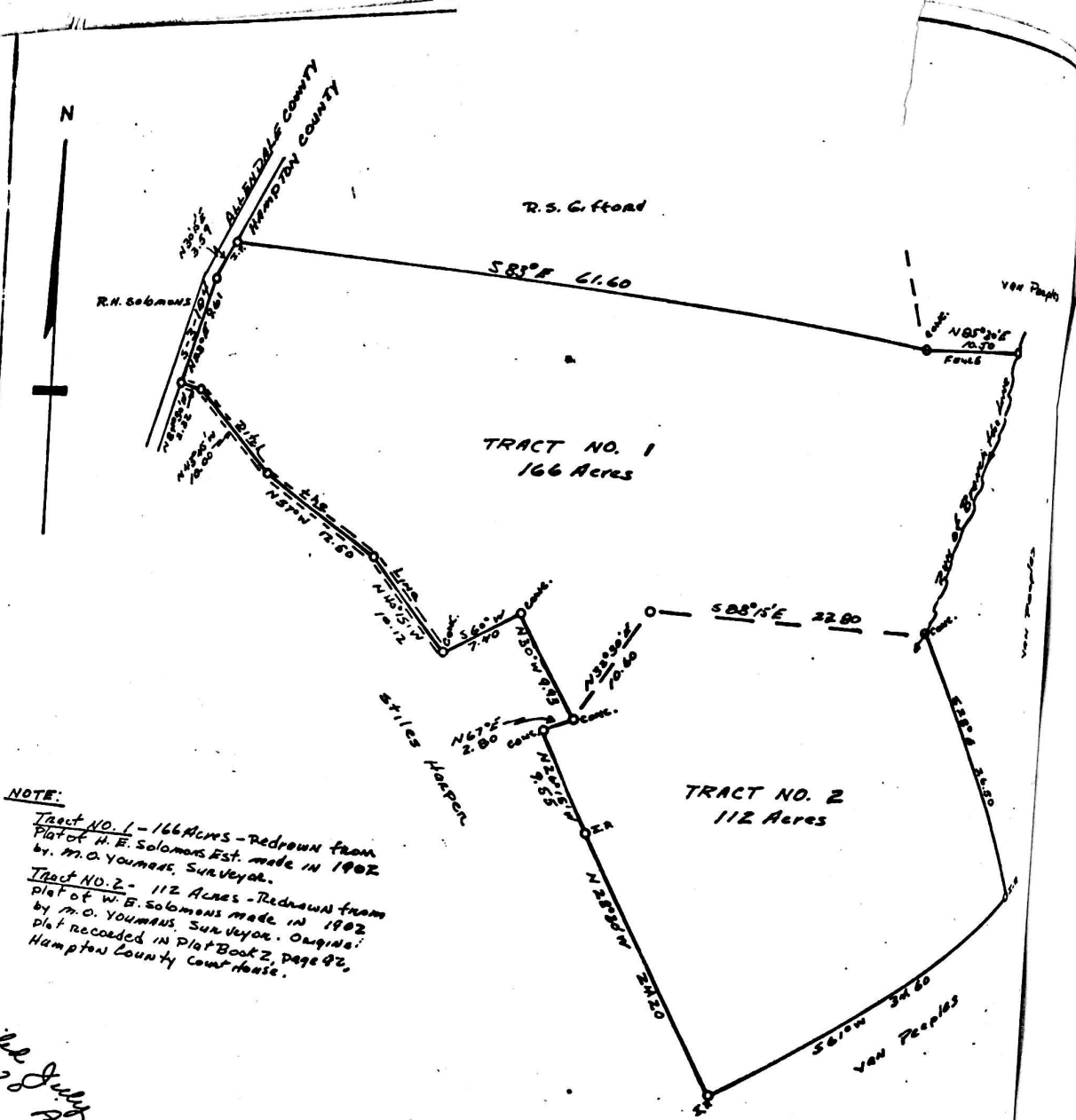


10-147



NOTE:
 Tract NO. 1 - 166 Acres - Redrawn from Plat of H. E. Solomons Est. made in 1902 by M. O. Youmans, Surveyor.
 Tract NO. 2 - 112 Acres - Redrawn from Plat of W. B. Solomons made in 1902 by M. O. Youmans, Surveyor. Original Plat recorded in Plat Book 2, Page 82, Hampton County Court House.

*Filed July 10th, 1967 at
 9:28 P.M.
 B. J. Miley, Clerk of Court
 Return to J. P. Miley*

PLAT OF PROPERTY
 OF
SAMUEL B. SOLOMONS
 CONTAINING
278 Acres
 HAMPTON COUNTY, S.C.
 Scale - 1" = 100 ft. July 9, 1967
Joe P. Miley, Reg. G.E., L.S.

