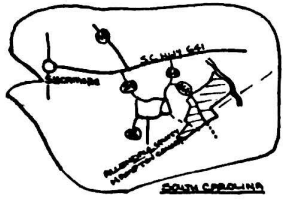


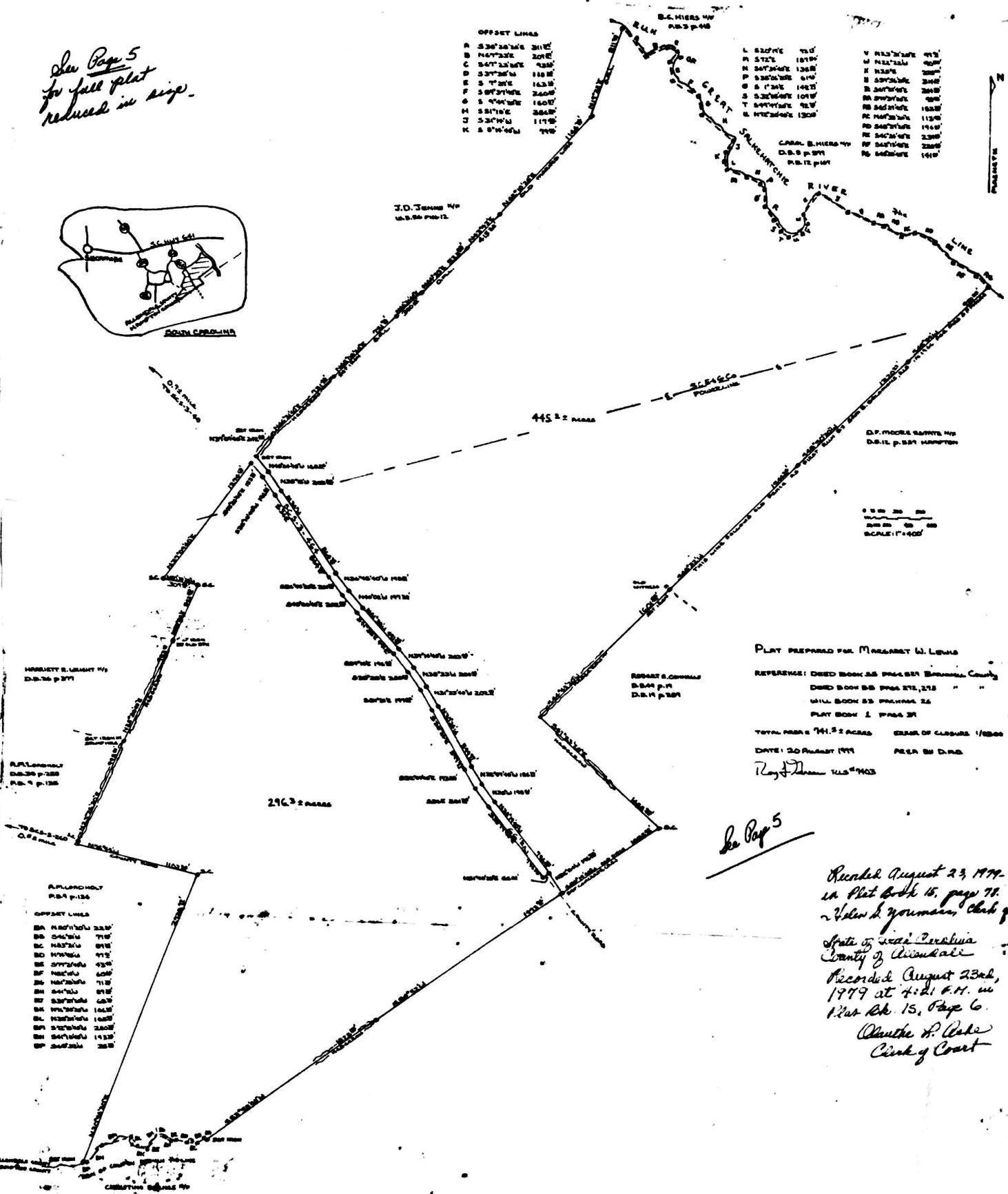
See Page 5  
for full plat  
reduced in size.



OFFSET LINES

A	53°28'24"	311'
B	146°23'24"	201'
C	50°23'24"	188'
D	5°23'24"	143'
E	5°23'24"	143'
F	5°23'24"	240'
G	5°23'24"	160'
H	5°23'24"	286'
J	5°23'24"	117'
K	5°23'24"	179'

L	82°07'42"	75'
M	57°23'24"	181'
N	84°23'24"	136'
O	5°23'24"	61'
P	5°23'24"	103'
Q	5°23'24"	103'
T	84°23'24"	92'
U	82°23'24"	130'
V	82°23'24"	47'
W	82°23'24"	47'
X	82°23'24"	286'
Y	82°23'24"	286'
Z	82°23'24"	113'
AA	82°23'24"	146'
AB	82°23'24"	238'
AC	82°23'24"	238'
AD	82°23'24"	141'



SCALE 1"=400'

PLAT PREPARED FOR MARGARET W. LEWIS

REFERENCE: DEED BOOK 25 PAGE 574 BARNWELL COUNTY  
DEED BOOK 25 PAGE 575, 215  
WILL BOOK 23 PAGE 26  
PLAT BOOK 1 PAGE 37

TOTAL PAGES 741.52 ACRES AREA OF CLOSURE 1/8200  
DATE: 20 AUGUST 1977 AREA BY D.M.D.

Ray J. Thomas 11547403

See Page 5

Recorded August 23, 1977- 11:25 pm  
in Plat Book 15, page 77.  
- Helen S. Youmans, Clerk of Court  
State of South Carolina  
County of Barnwell  
Recorded August 23rd,  
1977 at 4:21 P.M. in  
Plat Book 15, Page 6.  
Claude H. Wade  
Clerk of Court

APPROXIMATE  
P.S. 4 p. 136

OFFSET LINES

BA	82°23'24"	223'
BB	82°23'24"	71'
BC	82°23'24"	81'
BD	82°23'24"	91'
BE	82°23'24"	47'
BF	82°23'24"	47'
BG	82°23'24"	71'
BH	82°23'24"	81'
BI	82°23'24"	81'
BJ	82°23'24"	103'
BK	82°23'24"	103'
BL	82°23'24"	146'
BM	82°23'24"	238'
BN	82°23'24"	238'
BO	82°23'24"	141'
BP	82°23'24"	286'