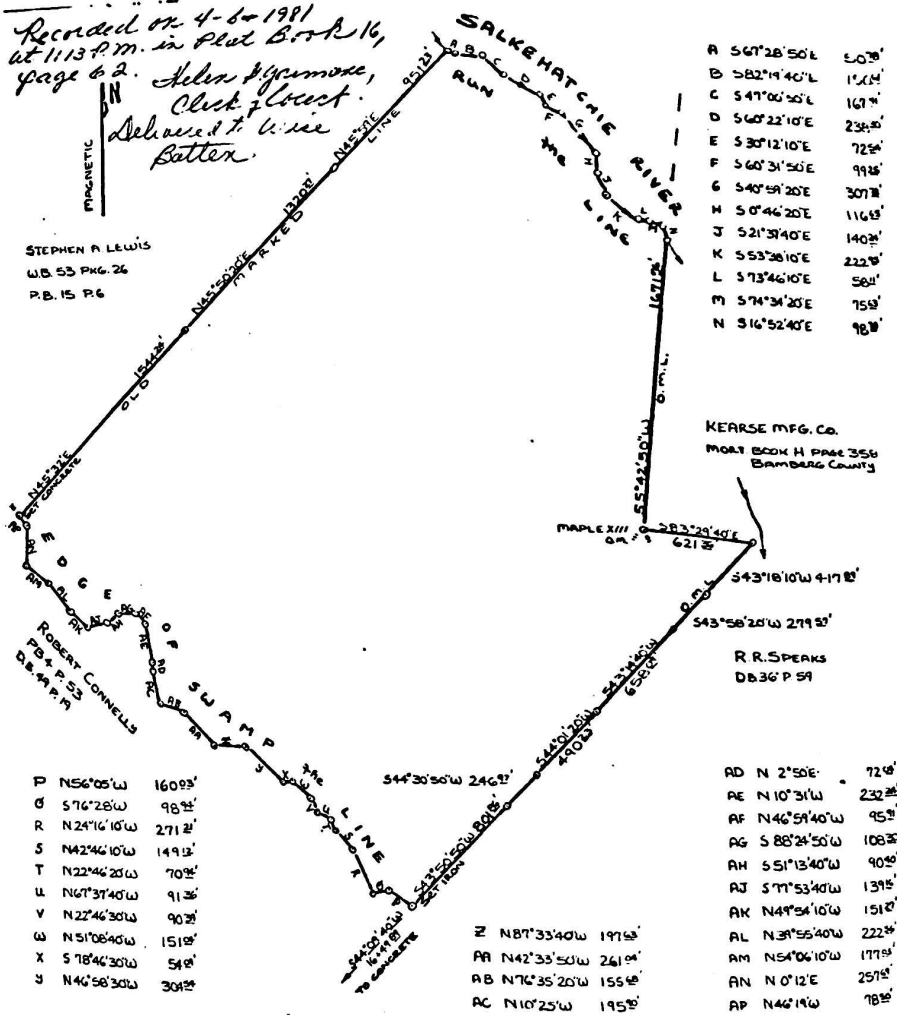


Recorded on 4-6-1981
 at 11:13 P.M. in Plat Book 16,
 page 62. Helen & James,
 Clerk & Deed.
 Delivered to W. Lee
 Batten.

STEPHEN A LEWIS
 W.B. 53 P. 26
 P.B. 15 P. 6



- A 567°28'50"E 507'
- B 582°14'40"E 156'
- C 547°00'50"E 167'
- D 560°22'10"E 234'
- E 530°12'10"E 72'
- F 560°31'50"E 99'
- G 540°59'20"E 307'
- H 50°46'20"E 116'
- J 521°37'40"E 140'
- K 553°38'10"E 222'
- L 573°46'10"E 581'
- M 574°34'20"E 75'
- N 516°52'40"E 98'

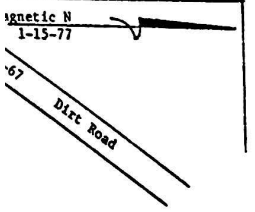
KEARSE MFG. CO.
 MORT BOOK H PAGE 356
 Bamberg County

R. R. SPEAKS
 DB 36 P 59

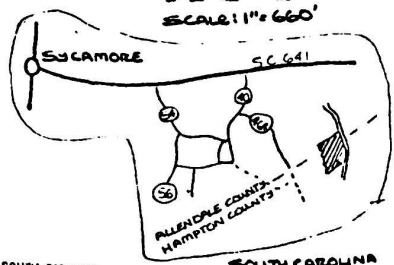
- P N56°05'W 1609'
- Q 576°28'W 98'
- R N24°16'10"W 2712'
- S N42°46'10"W 1493'
- T N22°46'20"W 709'
- U N67°37'40"W 913'
- V N22°46'30"W 903'
- W N51°08'40"W 1519'
- X S 78°46'30"W 549'
- Y N46°58'30"W 304'

- Z N87°33'40"W 1975'
- AA N42°35'50"W 2610'
- AB N76°35'20"W 1559'
- AC N10°25'W 195'

- AD N 2°50'E 72'
- AE N 10°31'W 232'
- AF N 46°59'40"W 95'
- AG S 88°24'50"W 1083'
- AH S 51°13'40"W 90'
- AJ S 77°53'40"W 139'
- AK N 44°54'10"W 151'
- AL N 31°55'40"W 222'
- AM N 54°06'10"W 177'
- AN N 0°12'E 257'
- AP N 46°19'W 78'



PLAT OF PROPERTY OF
 THE ESTATE OF D.F. MOORE
 REFERENCE: DEED BOOK 12 PAGE 534
 PLAT FOR R.R. SPEAKS, DATED
 27 SEPTEMBER, 1971, SURVEYED
 BY JOE P. MILEY, RACE, L.S.
 AREA: 267.6 ± ACRES BY D.M.D.



I HEREBY CERTIFY THE ERROR OF CLOSURE IS 1/10000
 DATE: 3 OCTOBER 1980
 Roy J. Dineen, RLS #7403

STATE OF SOUTH CAROLINA
 COUNTY OF ALLENDALE
 I HEREBY CERTIFY THAT THIS PLAT WAS INDEXED AND
 RECORDED THIS 3rd DAY OF April, 1981
 AT 3:30 P.M.
 IN Plat BOOK # 13
 PAGE 2318
 CLARENCE L. ASHE, C.C.C.P., R.M.C.
 CLERK OF COURT
 ALLENDALE COUNTY, S.C.

