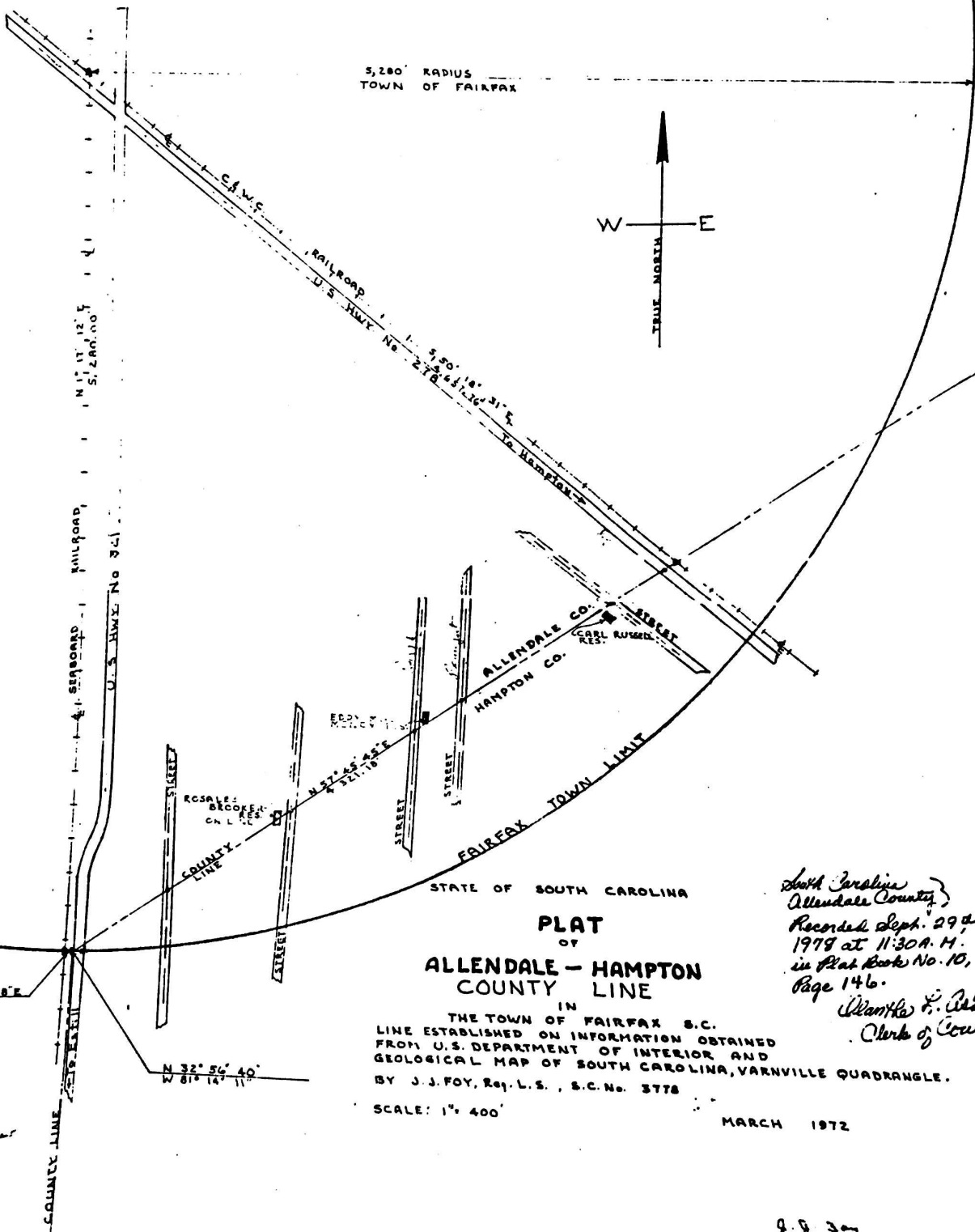
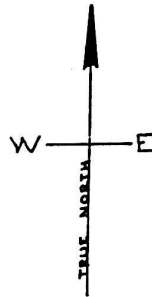


5,280' RADIUS  
TOWN OF FAIRFAX



STATE OF SOUTH CAROLINA  
PLAT  
OF  
ALLEDALE - HAMPTON  
COUNTY LINE

IN  
THE TOWN OF FAIRFAX S.C.  
LINE ESTABLISHED ON INFORMATION OBTAINED  
FROM U.S. DEPARTMENT OF INTERIOR AND  
GEOLOGICAL MAP OF SOUTH CAROLINA, VARNVILLE QUADRANGLE.  
BY J. J. FOY, Reg. L.S., S.C. No. 3778

SCALE: 1" = 400'

MARCH 1972

*South Carolina  
Alleendale County  
Recorded Sept. 29<sup>th</sup>  
1978 at 11:30 A.M.  
in Plat Book No. 10,  
Page 146.  
Walter P. Adde  
Clerk of Court*

8837