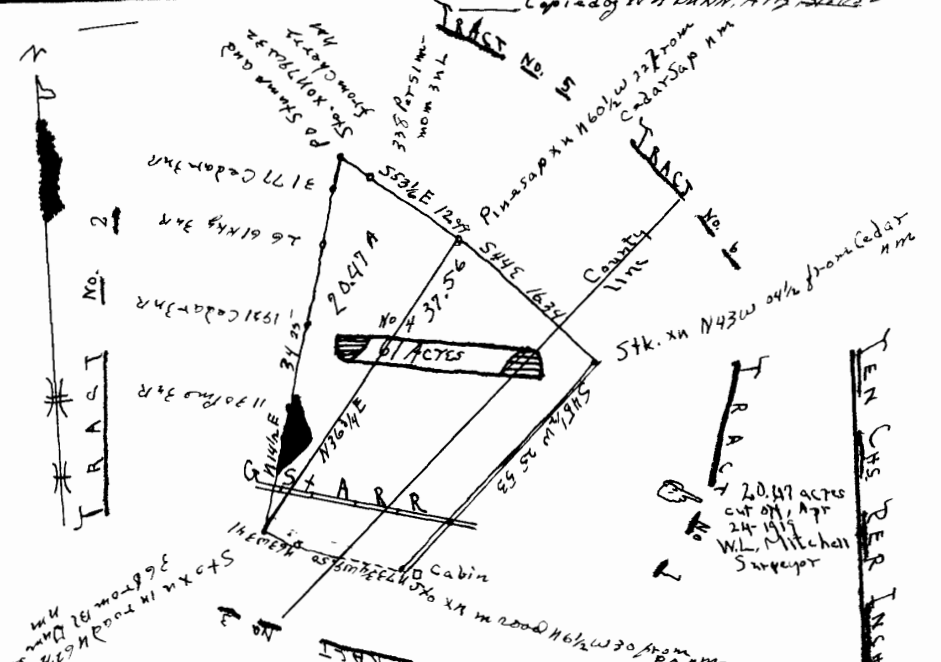


Copy 286 W B Dunn, A 773 22257



Stk. xx E 86 W 1/2 from Cedar  
 1170 ft 3/4  
 1921 Cedar 3/4  
 26 61/2 3/4  
 317 Cedar 3/4

The above plat represents tract of 61 acres of the land of W. B. Dunn, County of... sixty-one (61) acres, situated in... Abbeville and Greenwood Counties. Said tract is a part of 203 acres of the late Wallace land... and is a part of the 193 acre tract... There is also a strip... portion of a 300 acre tract.

Received Oct. 6/1953  
 Plat Book no 6 page 147  
 Index name  
 Wm. J. Robb Dunn

H. Milling  
 East